



# Spare parts for the professional sector: Commercial refrigeration



Suitable for:

# THIRODE



This catalogue is automatically generated.  
Therefore, the sequence of the items might  
not be always shown at best.  
Updates will be issued in case of additions  
and/or amendments.

*Suitable universal spare parts may not be included*

Rel. 2018-02161218





Suitable for:

# THIRODE



Suitable for:

## Axial motor fans

**3340001 AXIAL FAN EBM 4656Z**  
230V 50Hz 19W 2650rpm  
119x119x38 mm  
ball bearings



THIRODE 780002656

THIRODE 906107

**3240501 AXIAL FAN SUNON 120x120x38 mm**  
ball bearings  
230V 50/60Hz 22W 2850rpm  
DP200A 2123XBT.GN



THIRODE 304194

THIRODE 906107

## Compressors and spare parts

**3070097 COMPRESSOR TECUMSEH CAJ2446Z/R CSR**  
220/240V 50Hz  
Rotolock suction connection  
power 1.2 Hp. displacement 26.1 cc  
gas R404a/R507 LBP  
for Refrigerated cupboard (THIRODE)  
Series ANTARTICA  
for Refrigerated cupboard (THIRODE)  
ANTARTICA2P 614007



THIRODE 653243

## Contactors

**3454060 CONTACTOR SCHNEIDER LC1D09B7**  
9A 400V 4Kw - coil 24V 50/60Hz  
3 normally open contacts  
1 normally open auxiliary contact  
1 normally closed auxiliary contact



THIRODE 1700468

**3454015 CONTACTOR SCHNEIDER LC1D18P7**  
18A 400V 7.5Kw - coil 230V 50/60Hz  
3 normally open contacts  
1 normally open auxiliary contact  
1 normally closed auxiliary contact



THIRODE 1700732

THIRODE 300698



Suitable for:

**3454066 CONTACTOR SCHNEIDER LC1D25P7**  
 25A 400V 11Kw - coil 230V 50/60Hz  
 3 normally open contacts  
 1 normally open auxiliary contact  
 1 normally closed auxiliary contact



THIRODE 300697  
 THIRODE 5875E  
 THIRODE 905241  
 THIRODE 910566

THIRODE 300699  
 THIRODE 900130  
 THIRODE 905686

THIRODE 300760  
 THIRODE 905239  
 THIRODE 906759

Suitable for:

**3351049 CONTACTOR SIEMENS 3RT2016-1AP01**  
 9A 400V 4Kw - coil 230V 50/60Hz  
 3 normally open contacts  
 1 normally open auxiliary contact



THIRODE 2001923H

**3454072 CONTACTOR SIEMENS 3RT2017-1AB01**  
 12A 400V 5.5Kw - coil 24V 50/60Hz  
 3 contacts NO  
 1 NO auxiliary contact



THIRODE 2001138H

THIRODE 2001140H

THIRODE 5875E

## Electrical capacitors

**3068016 CAPACITOR DUCATI ENERGIA 10μF**  
 450V 50/60Hz  
 operating temperature -25 +85°C  
 lead connector 6.35x0.8 mm  
 ø 36xh58 mm



THIRODE 5843E

THIRODE 904191

**3068024 CAPACITOR DUCATI ENERGIA 16μF**  
 450V 50/60Hz  
 operating temperature -25 +85°C  
 lead connector 6.35x0.8 mm  
 ø 36xh70 mm



THIRODE 2001118H

THIRODE 2002168H

THIRODE 304259

**3068027 CAPACITOR DUCATI ENERGIA 20μF**  
 450V 50/60Hz  
 operating temperature -25 +85°C  
 lead connector 6.35x0.8 mm  
 ø 40xh70 mm



THIRODE 2001119H

THIRODE 2002417H

**3068008 CAPACITOR DUCATI ENERGIA 5μF**  
 450V 50/60Hz  
 operating temperature -25 +85°C  
 lead connection 6.35x0.8 mm  
 ø 28xh55 mm



THIRODE 2000001

THIRODE 2001120H



Suitable for:

# THIRODE



Suitable for:

**3068010 CAPACITOR DUCATI ENERGIA 6,3µF**  
 450V 50/60Hz  
 operating temperature -25 +85°C  
 lead connection 6.35x0.8 mm  
 ø 32xh55 mm



THIRODE 2000059

THIRODE 2001121H

**3068014 CAPACITOR DUCATI ENERGIA 8µF**  
 450V 50/60Hz  
 operating temperature -25 +85°C  
 lead connection 6.35x0.8 mm  
 ø 32xh55 mm



THIRODE 3709E

**3068080 CAPACITOR ELECTRICAL 10µF**  
 450V 50/60Hz - ø 30xh71 mm



THIRODE 5843E

THIRODE 904191

**3068083 CAPACITOR ELECTRICAL 16µF**  
 450V 50/60Hz - ø 35xh71 mm



THIRODE 2001118H

THIRODE 2002168H

THIRODE 304259

**3068084 CAPACITOR ELECTRICAL 20µF**  
 450V 50/60Hz - ø 40xh71 mm



THIRODE 2001119H

THIRODE 2002417H

**3068096 CAPACITOR ELECTRICAL 5µF**  
 450V 50/60Hz - ø 30xh51 mm



THIRODE 2000001

THIRODE 2001120H

**3068097 CAPACITOR ELECTRICAL 6.3µF**  
 450V 50/60Hz - ø 30xh51 mm



THIRODE 2000059

THIRODE 2001121H

**3068079 CAPACITOR ELECTRICAL 8µF**  
 450V 50/60Hz - ø 30xh71 mm



THIRODE 3709E

## Electronic controllers

**3445124 CONTROLLER EVCO EVK213N3**  
 12-24Vac/dc  
 1 relay outlet 16A for compressor  
 1 outlet relay 8A for defrosting  
 1 outlet relay 8A for evaporator fans  
 NTC/PTC probe selectable (not included)  
 with buzzer and serial port  
 dimension 75x33x depth 59 mm  
 mounting hole 71x29 mm



THIRODE S094PB70

THIRODE S094P20

THIRODE 651094

**3445234 CONTROLLER LAE AT1-5AS1E-G**  
 230V 50/60Hz  
 1 relay output 16A for compressor  
 1 selectable NTC/PTC probe (not included)  
 with buzzer  
 front dimension 77x35xdepth 70 mm  
 mounting hole 71x29 mm



THIRODE 651260



## Feet

- 3313005** ADJUSTABLE S/STEEL FOOT  $\varnothing$  2" x h 135 mm  
with fixed screw M12x40 mm  
adjustable height 135÷200 mm



THIRODE 2001489H

THIRODE 2001871H

## Fuses

- 3049041** QUICK ACTING FUSE  $\varnothing$  5x20 mm - 10 PCS  
250V 315mA



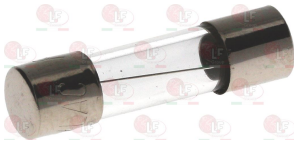
THIRODE 309316

- 3049045** QUICK ACTING FUSE  $\varnothing$  5x20 mm - 10 PCS  
250V 800mA



THIRODE 2001921H

- 3049052** QUICK ACTING FUSE  $\varnothing$  5x20 mm - 10 PCS  
250V 4A



THIRODE 2001981H

THIRODE 2002146H

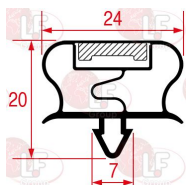
- 3049034** QUICK ACTING FUSE  $\varnothing$  6.3x32 mm - 10 PCS  
500V 10A



THIRODE 3090506

## Gaskets for refrigerators

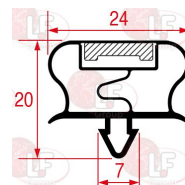
- 3786270** SNAP-IN GASKET 1520x640 mm  
for Refrigerated cupboard (THIRODE)  
ANTARTICA5 614000 - Series NEPTUNE - 616533  
for Refrigerated cupboard (THIRODE)  
ANTARTICA5 614000 - BONTAMI PS21/141 - 616162  
616164 ARM POLARIS P1 71 - 616533 - 617055  
POLARIS PBS71 616145



THIRODE 15398881

THIRODE 906002019

- 3786271** SNAP-IN GASKET 1540x685 mm  
for Refrigerated cupboard (THIRODE)  
Series ANTARTICA - IXANE 614071 - NEPTUNE 612517  
614007  
for Refrigerated cupboard (THIRODE) ADELIE DB2.51  
BONTAMI PS21/141 - IXANE 614071 - IXANE 614075  
MAGELLAN P2BS 612615 - MAGELLAN 612612  
NEPTUNE 612517 - 612600 - 614001 - 614007  
614052 - 614053 614102 - 614103



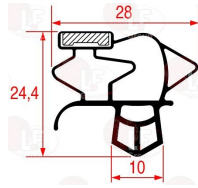
THIRODE S355P11

THIRODE 638854



Suitable for:

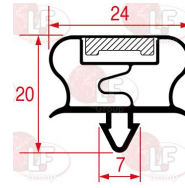
**3786274 SNAP-IN GASKET 1550x660 mm**



THIRODE 74306

Suitable for:

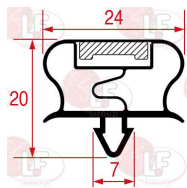
**5044628 SNAP-IN GASKET 1860x700 mm**  
for Refrigerated cupboard (THIRODE) 616550  
616553 - 616557  
for Refrigerated cupboard refrigerated (THIRODE)  
616551



THIRODE S211P11

THIRODE 638211

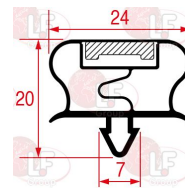
**3786268 SNAP-IN GASKET 1945x815 mm**  
for Refrigerated cupboard (THIRODE)  
Series NEPTUNE



THIRODE 638168

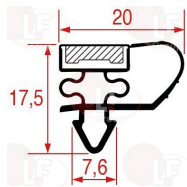
THIRODE 906004254

**5033846 SNAP-IN GASKET 610x405 mm**



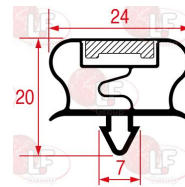
THIRODE 638427

**3786272 SNAP-IN GASKET 647x477 mm**



THIRODE 638186

**5045974 SNAP-IN GASKET 790x715 mm**



THIRODE S218P11

THIRODE 638218

## Grids for oven

**3185053 STAINLESS STEEL GRID GN 2/1 650x530 mm**



THIRODE 635022

## Handles

**3242221 CHROME-PLATED ADJUSTABLE DOOR STRIKE**  
base length 38x18x31 mm  
fixing distance 26 mm  
RAHRBACH



THIRODE S486P51

THIRODE 679486

**3242948 LH-RH CATCH WITH LOCK 795 CR**  
straight handgrip  
base length 150x30x40.5h mm  
mounting distance 133 mm  
adjustable catch between 9 and 22 mm



THIRODE 74441

Suitable for:

**3242583 LH-RH CATCH WITH LOCK 885 CR**  
 straight handgrip  
 base length 122x28x35h mm  
 mounting distance 104 mm  
 adjustable catch mounting distance 31 mm



THIRODE 906392

Suitable for:

**3242579 LH-RH CATCH WITHOUT LOCK 570 CR**  
 straight handgrip  
 base length 150x23x30h mm  
 mounting distance 110 mm  
 catch height 16.5 mm



THIRODE 621002

**3242946 LOCKING HANDLE RH/LH W/OUT KEYLOCK 790CR**  
 straight handle  
 base length 254x30 mm  
 mounting distance 133 mm  
 adjustable catch between 9 and 22 mm



THIRODE 384634

**3242947 LOCKING HANDLE RH/LH W/OUT LOCK 791 CR**  
 curved handle  
 length 254x30 mm - mounting distance 133 mm  
 adjustable catch between 9 and 22 mm



THIRODE 71261E

**3242349 LOCKING HANDLE 621 WITH KEY LOCK**  
 213x104xh50 mm



THIRODE 21273E

## Heating elements

**3455479 CARTRIDGE HEATING ELEMENT PTC 400W 230V**  
 cartridge length 240 mm ø 12 mm  
 fitting 3/8"G  
 cable length 1000 mm



THIRODE 161876

**3355932 HEATING ELEMENT 46W 230V**  
 for door  
 overall length 7600 mm - hot part 6000 mm



THIRODE S217P15

THIRODE 645217



Suitable for:

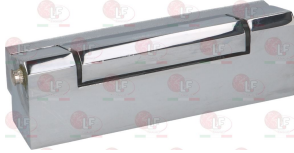
# THIRODE



Suitable for:

## Hinges, catches and accessories

**3053391 CHROME-PLATED HINGE 361**  
length 140 mm - mounting distance 30-35 mm  
for door thickness from 37 mm, gasket included



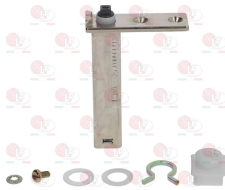
THIRODE 71258E

**3053941 HINGE FERMOD 175**  
with cross-head pin



THIRODE S083P01

**3053944 HINGE FERMOD 176**  
with square pin 8 mm  
for Refrigerated cupboard (THIRODE) 614004



THIRODE 621083

**3053427 HINGE 362 LH WITH RAMP**  
length 150 mm - mounting distance 110-80 mm



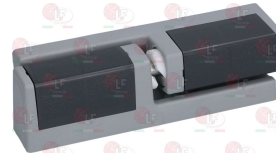
THIRODE 74445

**3053426 HINGE 362 RH WITH RAMP**  
length 150 mm - mounting distance 110-80 mm



THIRODE 74444

**3053400 HINGE 481 HP WITH RAMP**  
mounting distance 30 mm

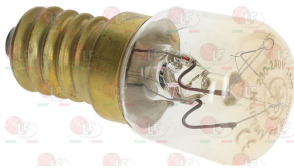


THIRODE S090P01

THIRODE 621090

## Incandescent lamps and neon lamps

**3221041 LAMP E14 15W 230V**  
max temperature 300°C - ø 22x50 mm



THIRODE 70597E

**3221061 LAMP E14 25W 230V**  
max temperature 300°C - ø 26x57 mm



THIRODE 70598E

## Indicator lights

**3221025 INDICATOR LIGHT ORANGE 230V**  
head ø 15 mm - hole ø 13 mm - 120°C  
faston M 6.3x0.8 mm  
universal application



THIRODE 904360

**3221515 INDICATOR LIGHT ORANGE 250V**  
head ø 14 mm - hole ø 13 mm



THIRODE S298P15

THIRODE 645298





## Microswitches, mechanical

**5050688 MICROSWITCH ARCOLECTRIC HK3141AA**  
1-NC 1-NO 5A 250V  
white colour



THIRODE S128P15

THIRODE 645128

## Motors

**3240580 MOTOR EBM M4Q045-CA03-75 PENTAVALENT**  
230V 50/60Hz 10W 1300rpm



THIRODE 2010047

**3240627 MOTOR EBM M4Q045-DA01-75 PENTAVALENT**  
230V 50/60Hz 18W 1300rpm



THIRODE 2010048

**3240628 MOTOR EBM M4Q045-EA01-75 PENTAVALENT**  
230V 50/60Hz 25W 1300rpm



THIRODE 2010049

**3340106 MOTOR ELCO VN 10-20/1796**  
NEC7T10ZVN001  
230V 50/60Hz 1300rpm 10W  
shaft length 120 mm - with bearings  
back fastening  
complete with stainless steel bracket h=100 mm



THIRODE F10D00004PC1

THIRODE S536P15

THIRODE 645157

THIRODE R45536

THIRODE S536P15+S321P46

THIRODE 645536

THIRODE S157P15

THIRODE 345536+674321

THIRODE 645536+674321

**3240210 MOTOR ELCO VN 5-13 PENTAVALENT**  
230V 50/60Hz 5W 1300rpm



THIRODE 2010063

**3805017 MOTOR FAN 10 W WITH RING**  
230V 50/60Hz  
suction fan ø 200 mm  
VN10.20/1410



THIRODE



Suitable for:

**3805009 MOTOR FAN 5 W WITH RING**  
230V 50/60Hz  
suction fan ø 154 mm  
VN5.13.115.154.31



THIRODE

Suitable for:

**3805010 MOTOR FAN 5 W WITH RING**  
230V 50/60Hz  
suction fan ø 170 mm  
NA5.13.606.172/22



THIRODE

**3805011 MOTOR FAN 10W WITH RING**  
230V 50/60Hz  
suction fan ø 200 mm  
VN10.20/118.A200.31



THIRODE

**3805008 MOTOR FAN 5W WITH RING**  
230V 50/60Hz  
suction fan ø 154 mm  
VN 5-13/1692



THIRODE

## Probes

**3445913 SILICONE PROBE NTC 1500 mm**  
temperature range -50+110°C  
bulb ø 6x40 mm



THIRODE S184P20

THIRODE 651184

**3445959 SILICONE PTC PROBE 5000 mm**  
temperature range -55+150°C  
bulb ø 6x40 mm



THIRODE 25040403

## Refrigerators evaporators

**5043563 EVAPORATOR 335x120x110 mm**  
for Refrigerated table (THIRODE) 613600



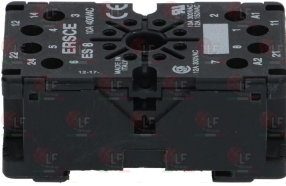
THIRODE S014P30

THIRODE 652014



## Relays

**3351154 BASE OCTAL ES8 10A 400V**  
8 poles



THIRODE 5937E

**3351901 POWER RELAY FINDER 60.62.8.230.0000**  
230V 50/60Hz  
2 exchange contacts 10A



THIRODE 2001867H

**3351021 POWER RELAY FINDER 62.82.8.230.0000**  
230V 50/60Hz  
2 exchange contacts 16A



THIRODE 2001873H

**3351008 POWER RELAY FINDER 62.83.8.230.0000**  
230V 50/60Hz  
3 exchange contacts 16A



THIRODE 2001258H

THIRODE 900073

**3351602 POWER RELAY FINDER 65.31.8.230.0300**  
230V 50/60Hz  
1 contact NO 30A



THIRODE 2001929H

THIRODE 300283

**3351605 RELAY POWER FINDER 60.63.8.230.0000**  
230V 50/60Hz  
3 exchange contacts 10A



THIRODE 2001887H

## Solenoid valves

**3120910 CASTEL COIL 230V HF2**  
50/60 Hz



THIRODE S074P20

THIRODE 651074



Suitable for:

# THIRODE



Suitable for:

## Switches

### 1319702 SELECTOR SWITCH STABLE 2-POLES BLACK

16(4)A 250V  
3 positions - silk screen printing I - 0 - I  
max. temperature 120°C  
mounting hole 22x30 mm



THIRODE 900010

## Tangential and radial motor fans

### 3526160 TANGENTIAL FAN 180x180 mm

28W - 230V 50/60Hz - ø 60 mm DOUBLE  
T°max 60°C



THIRODE 504365

## Thermostats

### 3444533 DANFOSS THERMOSTAT KIT N°8 - 077B-7008

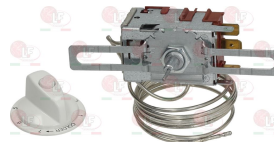
DRINK REFRIGERATOR 3 contacts 6A 250V  
capillary 2000 mm  
COLD -1/8.5 : WARM +11/+6°C  
D-shaped pin ø 6x4.6 mm



THIRODE 75643

### 3444880 THERMOSTAT DANFOSS KIT N°2 - 077B-7001

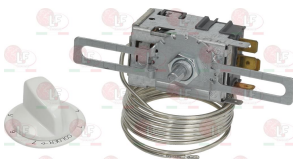
1 DOOR REFRIGERATOR 4 contacts, capillary 1300 mm  
WARM 0°/-7.5°C - COLD -21°/-11.5°C  
D-shaped pin ø 6x4.6 mm  
with defrosting button



THIRODE 1176389

### 3444882 THERMOSTAT DANFOSS KIT N°4 - 077B-7004

ABSORPTION REFRIGERATOR  
4 contacts 6A 250V capillary 1600 mm  
COLD -11°/-5°C - WARM +3.5°/-1°C  
D-shaped pin ø 6x4.6 mm



THIRODE 1176387

### 3444883 THERMOSTAT DANFOSS 077B-7005

3 contacts 6A 250V  
capillary 2300 mm  
COLD -32.5°/-21°C - WARM -1.5°/-7.5°C  
D-shaped pin ø 6x4.6 mm



THIRODE 1176388



Suitable for:

Suitable for:

**3444919 THERMOSTAT RANCO K50 P1115**  
2 contacts 6A 250V  
capillary 2000 mm  
COLD +1.5°C - WARM +11.0°C  
D shaft  $\varnothing$  6x4.6 mm



THIRODE 380101

## Timers

**3322900 TIMER HAGER EH710 24h**  
230V 50Hz  
1 contact 16A 250V  
minimum programming interval 10 minutes  
min interval between 2 switching 20 minutes  
size 72x72 mm



THIRODE 42587E

THIRODE 651026

The data herewith contained may change without notice and LF SpA cannot be held responsible for possible errors stated or resulting by the use of this document. All rights reserved. No part of this publication may be reproduced without written permission by LF SpA.



## Distributing Components, Spare Parts & Accessories in original quality worldwide

- 
- LF SpA HEADQUARTERS**  
via Voltri, 80 - 47522 Cesena (FC) ITALY  
Tel. +39 0547 34 11 11 - Fax +39 0547 34 11 10  
[www.lfricambi724.it](http://www.lfricambi724.it) - [info@lfricambi.it](mailto:info@lfricambi.it)  
Export Dept. Tel. +39 0547 34 11 50 - Fax +39 0547 34 11 55  
[www.lfspareparts724.com](http://www.lfspareparts724.com) - [export@lfspareparts.com](mailto:export@lfspareparts.com)
- LF SpA HOUSEHOLD COMPONENTS DIVISION**  
Via Padriciano, 99 - AREA Science Park - 34149 Trieste (TS) ITALY  
Tel. +39 0547 34 12 42 - Fax +39 0547 34 12 48  
[www.lfspareparts724.com](http://www.lfspareparts724.com) - [info@lfspareparts.com](mailto:info@lfspareparts.com)
- EPGC Sas FRANCE**  
13, Rue des Forts - 59960 Neuville en Ferrain  
Tel. +33 (0)3 20 25 06 21 - Fax +33 (0)3 20 25 34 12  
[www.epgc.com](http://www.epgc.com) - [epgc@epgc.com](mailto:epgc@epgc.com)
- LF GmbH GERMANY**  
Junkersstrasse, 3 - D-82178 Puchheim - München  
Tel. +49 89 89 45 78 66 - Fax +49 89 89 45 78 88  
[www.lfersatzteile724.de](http://www.lfersatzteile724.de) - [info@lfersatzteile.de](mailto:info@lfersatzteile.de)
- LF China REPUBLIC OF CHINA**  
Room 403, No.2, Huadu Mansion, Lane 422, Huanghua Rd.  
Minhang Dist. - 201103 Shanghai  
Tel. +86 (0)21 33 53 66 31 - Fax +86 (0)21 33 53 66 32  
[www.lfspareparts724.com](http://www.lfspareparts724.com) - [china@lfspareparts.com](mailto:china@lfspareparts.com)
- OOO LF RUSSIAN FEDERATION**  
Ul. Anatoliya Zhivova, 8 - office 1 - 123100 Moscow  
Tel./Fax +7 495 725 26 53  
[www.lfspareparts724.ru](http://www.lfspareparts724.ru) - [info@lfspareparts.ru](mailto:info@lfspareparts.ru)
- LF Repuestos Horeca S.L.U. SPAIN**  
Poligono Industrial Carpetania - C/Miguel Faraday, 8 - 28906 Getafe  
Tel. +34 91 477 91 00 - Fax +34 91 477 90 81  
[www.lfrepuestos-horeca724.es](http://www.lfrepuestos-horeca724.es) - [info@lfrepuestos.es](mailto:info@lfrepuestos.es)
- LF Scandinavia Aps - LF Spareparts S.p.A. DENMARK**  
Nupark, 51 - 7500 Holstebro  
Tel. +45 70 70 77 33  
[www.lfspareparts724.dk](http://www.lfspareparts724.dk) - [denmark@lfspareparts.dk](mailto:denmark@lfspareparts.dk)
- LF SpA Cesena (IT) Swiss Branch Steinhausen SWITZERLAND**  
Sennweidstrasse, 45 - CH-6312 Steinhausen  
Tel. +41 (0)41 760 15 80/1 - Fax +41 (0)41 760 15 85  
[www.lfersatzteile724.ch](http://www.lfersatzteile724.ch) - [info@lfersatzteile.ch](mailto:info@lfersatzteile.ch)
- LF Spare Parts Ltd. UNITED KINGDOM**  
A10a Lakeside Business Park, Broadway Lane  
South Cerney, Gloucestershire GL7 5XL  
Tel. +44 (0)1285 86 16 25 - Fax +44 (0)1285 86 39 49  
[www.lfspareparts724.co.uk](http://www.lfspareparts724.co.uk) - [info@lfspareparts.co.uk](mailto:info@lfspareparts.co.uk)
- LF Central Est Europe S.r.o. CZECH REPUBLIC**  
Antala Staska 1859/34  
14000 Praha 4 - KRC  
Tel. +420 730 156 910  
[www.lfspareparts724.cz](http://www.lfspareparts724.cz) - [info@lfspareparts.cz](mailto:info@lfspareparts.cz)
- LF SPARE PARTS INC. USA**  
Legal address:  
155 Office Plaza Dr - Suite A - Tallahassee, FL 32301  
Business/Mailing address:  
1100 South Tower, 225 Peachtree St., N.E. - Atlanta, GA 30303, USA  
Tel. +1-404-525-2600 - Fax +1-404-586-3528  
[www.lfspareparts724.us](http://www.lfspareparts724.us) - [info@lfspareparts.us](mailto:info@lfspareparts.us)  
Tel. West Coast and Midwest: 206-349-1525 Sauro  
Tel. East Coast and the Caribbean: 786-817-1764 Luis
- 
- AUSTRALIA AND NEW ZEALAND**  
[www.lfspareparts724.com](http://www.lfspareparts724.com)  
[andrea.calvio@lfspareparts.com](mailto:andrea.calvio@lfspareparts.com)
- AUSTRIA**  
[www.lfersatzteile724.at](http://www.lfersatzteile724.at)  
[info@lfersatzteile.at](mailto:info@lfersatzteile.at)
- BALKAN COUNTRIES**  
[www.lfspareparts724.com](http://www.lfspareparts724.com)  
[matija.ramov@lfspareparts.com](mailto:matija.ramov@lfspareparts.com)
- BALTIC COUNTRIES**  
[www.lfspareparts724.com](http://www.lfspareparts724.com)  
[inara.silina@lfspareparts.com](mailto:inara.silina@lfspareparts.com)
- LATIN AMERICA AND THE CARRIBEANS**  
[www.lfrepuestos-horeca724.es](http://www.lfrepuestos-horeca724.es)  
[export@lfrepuestos.es](mailto:export@lfrepuestos.es)
- POLAND**  
[www.lfspareparts724.pl](http://www.lfspareparts724.pl)  
[info@lfspareparts.pl](mailto:info@lfspareparts.pl)
- SOUTH KOREA**  
[www.lfspareparts724.com](http://www.lfspareparts724.com)  
[fabio.doni@lfspareparts.com](mailto:fabio.doni@lfspareparts.com)
- TURKEY**  
[www.lfyedekparca724.com](http://www.lfyedekparca724.com)  
[export@lfspareparts.com](mailto:export@lfspareparts.com)