



# Spare parts for the professional sector: Commercial refrigeration



Suitable for:

# MTH



This catalogue is automatically generated.  
Therefore, the sequence of the items might  
not be always shown at best.  
Updates will be issued in case of additions  
and/or amendments.  
*Suitable universal spare parts may not be included*

Rel. 2018-02161058





Suitable for:

MTH



Suitable for:

## Compressors and spare parts

**3070015 COMPRESSOR CUBIGEL GP12TB CSIR**  
220/240V 50Hz  
power 1/3 Hp, displacement 12.00 cc  
gas R134a HMBP



MTH

**3070070 COMPRESSOR SECOP FR10G CSIR**  
220/230V 50Hz  
power 1/4 Hp - displacement 9.05 cc  
gas R134a HMBP  
103G6880-HST DANFOSS



MTH 018466

**3070154 COMPRESSOR SECOP FR11G CSIR**  
220/230V 50Hz  
power 1/4 Hp - displacement 11.15 cc  
gas R134a HMBP  
103G6980-HST DANFOSS



MTH 018467

**3070214 COMPRESSOR SECOP FR6CL CSIR**  
220/230V 50Hz  
power 1/5 Hp - displacement 6.23 cc  
gas R404a/R507 LBP  
103U2670-HST DANFOSS



MTH 018162

**3070256 COMPRESSOR SECOP FR6G CSIR**  
220/230V 50Hz  
power 1/5L Hp - displacement 6.23 cc  
gas R134a HMBP  
103G6660-HST DANFOSS



MTH 018462

**3070079 COMPRESSOR SECOP FR7.5G CSIR**  
220/230V 50Hz  
power 1/5 Hp - displacement 6.93 cc  
gas R134a HMBP  
103G6680-HST DANFOSS



MTH 018463

**3070280 COMPRESSOR SECOP FR7,5CL CSIR**  
220/230V 50Hz  
power 1/4L Hp - displacement 6.93 cc  
gas R404a/R507 LBP  
103U2790-HST DANFOSS



MTH TBD\_FR7.5CL

**3070082 COMPRESSOR SECOP FR8.5CL CSIR**  
220/230V 50Hz  
power 1/4 HP - displacement 7.95 cc  
gas R404a/R507 LBP  
103U2890-HST DANFOSS



MTH 018164



**3070039 COMPRESSOR SECOP FR8.5G CSIR**  
 220/230V 50Hz  
 power 1/4L Hp - displacement 7.95 cc  
 gas R134a HMBP  
 103G6780-HST DANFOSS



MTH 018464

**3070208 COMPRESSOR SECOP NL10MF CSIR**  
 220/230V 50/60Hz  
 power 1/3 Hp - displacement 10.10 cc  
 gas R134a MBP  
 DANFOSS 105G6885



MTH 018456

**3070239 COMPRESSOR SECOP NL11MF CSIR**  
 220/230V 50Hz  
 power 1/3 Hp - displacement 11.15 cc  
 gas R134a MBP  
 DANFOSS 105G6151



MTH 018457

**3070227 COMPRESSOR SECOP NL6.1MF CSIR**  
 220/230V 50/60Hz  
 power 1/6 Hp - displacement 6.13 cc  
 gas R134a MBP  
 DANFOSS 105G6660



MTH 018452

**3070221 COMPRESSOR SECOP NL7.3MF CSIR**  
 220/230V 50/60Hz  
 power 1/4L Hp - displacement 7.27 cc  
 gas R134a MBP  
 DANFOSS 105G6772



MTH 018453

**3070207 COMPRESSOR SECOP NL8.4MF CSIR**  
 220/240V 50Hz  
 power 1/4 Hp - displacement 8.35 cc  
 gas R134a MBP  
 DANFOSS 105G6879



MTH 018454

**3070071 COMPRESSOR SECOP SC10G CSIR**  
 220/230V 50Hz  
 power 1/3L Hp - displacement 10.29 cc  
 gas R134a HMBP  
 104G8000-HST DANFOSS



MTH 018470

**3070067 COMPRESSOR SECOP SC12G CSIR**  
 220/230V 50/60Hz  
 power 1/3 Hp - displacement 12.87 cc  
 gas R134a HMBP  
 104G8240-HST DANFOSS



MTH 018472



Suitable for:

# MTH



**3070068 COMPRESSOR SECOP SC15G CSIR**  
 220/230V 50Hz  
 power 3/8 Hp - displacement 15.28 cc  
 gas R134a HMBP  
 104G8520-HST DANFOSS



MTH 018475

**3070069 COMPRESSOR SECOP SC18G CSIR**  
 220/230V 50Hz  
 power 1/2 Hp - displacement 17.70 cc  
 gas R134a HMBP  
 104G8820-HST DANFOSS



MTH 018476

**3070076 COMPRESSOR SECOP SC21CL CSR**  
 220/230V 50Hz  
 power 7/8 HP - displacement 20.90 cc  
 gas R404a/R507 LBP  
 104L2322-HST DANFOSS



MTH 018177

**3070155 COMPRESSOR SECOP SC21G CSR**  
 220/230V 50Hz  
 power 5/8 Hp - displacement 20.95 cc  
 gas R134a HMBP  
 104G8140-HST DANFOSS



MTH 018477

**3070289 COMPRESSOR SECOP TL4,5CLX CSIR**  
 220/230V 50Hz  
 power 1/6 Hp - displacement 4.63 cc  
 gas R404a/R507 LBP  
 102U2111-HST DANFOSS



MTH TBD\_TL4.5CLX

**3070078 COMPRESSOR SECOP TL4G CSIR**  
 220/230V 50/60Hz  
 power 1/8 Hp - displacement 3.90 cc  
 gas R134a HMBP  
 102G4452-HST DANFOSS



MTH 018434

**3070077 COMPRESSOR SECOP TL5G CSIR**  
 220/230V 50/60Hz  
 power 1/6 Hp - displacement 5.10 cc  
 gas R134a HMBP  
 102G4550-HST DANFOSS



MTH 018435

**3070247 COMPRESSOR TECUMSEH AE4425Y CSIR**  
 220/240V 50Hz  
 power 1/5 Hp, displacement 6.7 cc  
 gas R134a HMBP



MTH 00102.7





**3070241 COMPRESSOR TECUMSEH AE4430Y CSIR**  
 220/240V 50Hz  
 power 1/4 Hp, displacement 8.0 cc  
 gas R134a HMBP



MTH 00104.7

Suitable for:

**3070249 COMPRESSOR TECUMSEH AE4430Z CSIR**  
 220/240V 50Hz  
 power 1/4 Hp, displacement 5.2 cc  
 gas R404a/R507 HMBP



MTH 00162.7

**3070242 COMPRESSOR TECUMSEH AE4440Y CSIR**  
 220/240V 50Hz  
 power 1/3 Hp displacement 10.33 cc  
 gas R134a HMBP



MTH 00106.7

**3070250 COMPRESSOR TECUMSEH AE4440Z CSIR**  
 220/240V 50Hz  
 power 1/3 Hp, displacement 6.7 cc  
 gas R404a/R507 HMBP



MTH 00164.7

**3070243 COMPRESSOR TECUMSEH AE4450Y CSIR**  
 220/240V 50Hz  
 power 3/8 Hp, displacement 13.2 cc  
 gas R134a HMBP



MTH 00107.7

**3070251 COMPRESSOR TECUMSEH AE4450Z CSIR**  
 220/240V 50Hz  
 power 3/8 Hp, displacement 8.8 cc  
 gas R404a/R507 HMBP



MTH 00167.7

**3070244 COMPRESSOR TECUMSEH AE4456Y CSIR**  
 220/240V 50Hz  
 power 3/8 Hp, displacement 14.5 cc  
 gas R134a HMBP



MTH 00108.7

**3070254 COMPRESSOR TECUMSEH AE4460Y CSR**  
 220/240V 50Hz  
 power 1/2 Hp, displacement 15.1 cc  
 gas R134a HMBP



MTH 00110.70

**3070252 COMPRESSOR TECUMSEH AE4460Z CSIR**  
 220/240V 50Hz  
 power 1/2 Hp, displacement 10.3 cc  
 gas R404a/R507 HMBP



MTH 00169.7

**3070094 COMPRESSOR TECUMSEH CAJ2428Z/R CSR**  
 220/240V 50Hz  
 Rotalock suction connection  
 power 5/8 Hp. displacement 15.2 cc  
 gas R404a/R507 LBP



MTH 00146.14



Suitable for:

**MTH**



**3070095 COMPRESSOR TECUMSEH CAJ2432Z/R CSR**  
 220/240V 50Hz  
 Rotalock suction connection  
 power 3/4 Hp. displacement 18.3 cc  
 gas R404a/R507 LBP



MTH 00148.14

**3070097 COMPRESSOR TECUMSEH CAJ2446Z/R CSR**  
 220/240V 50Hz  
 Rotalock suction connection  
 power 1.2 Hp. displacement 26.1 cc  
 gas R404a/R507 LBP



MTH 00149.14

**3070098 COMPRESSOR TECUMSEH CAJ2464Z/R CSR**  
 220/240V 50Hz  
 Rotalock suction connection  
 power 1.5 Hp. displacement 34.4 cc  
 gas R404a/R507 LBP



MTH 00151.14

**3070145 COMPRESSOR TECUMSEH CAJ4461Y/R CSIR**  
 220/240V 50Hz  
 Rotalock suction connection  
 power 1/2 Hp. displacement 18.3 cc  
 gas R134a HMBP



MTH 00110.14

**3070146 COMPRESSOR TECUMSEH CAJ4476Y/R CSIR**  
 220/240V 50Hz  
 Rotalock suction connection  
 power 5/8 Hp. displacement 21.8 cc  
 gas R134a HMBP



MTH 00112.14

**3070147 COMPRESSOR TECUMSEH CAJ4492Y/R CSIR**  
 220/240V 50Hz  
 Rotalock suction connection  
 power 3/4 Hp. displacement 26 cc  
 gas R134a HMBP



MTH 00113.14

**3070148 COMPRESSOR TECUMSEH CAJ4511Y/R CSR**  
 220/240V 50Hz  
 Rotalock suction connection  
 power 1 Hp. displacement 32.7 cc  
 gas R134a HMBP



MTH 00115.14

**3070133 COMPRESSOR TECUMSEH CAJ4517Z/R CSR**  
 220/240V 50Hz  
 Rotalock suction connection  
 power 1.2 Hp. displacement 25.9 cc  
 gas R404a/R507 HMBP



MTH 00177.14



Suitable for:

Suitable for:

**3070134 COMPRESSOR TECUMSEH CAJ4519Z/R CSR**  
220/240V 50Hz  
Rotalock suction connection  
power 1.5 Hp. displacement 34.4 cc  
gas R404a/R507 HMBP



MTH 00179.14

**3070130 COMPRESSOR TECUMSEH CAJ9480Z/R CSR**  
220/240V 50Hz  
Rotalock suction connection  
power 5/8 Hp. displacement 15.2 cc  
gas R404a/R507 HMBP



MTH 00171.14

**3070131 COMPRESSOR TECUMSEH CAJ9510Z/R CSR**  
220/240V 50Hz  
Rotalock suction connection  
power 1 Hp. displacement 18.3 cc  
gas R404a/R507 HMBP



MTH 00173.14

**3070132 COMPRESSOR TECUMSEH CAJ9513Z/R CSR**  
220/240V 50Hz  
Rotalock suction connection  
power 1.1 Hp. displacement 24.2 cc  
gas R404a/R507 HMBP



MTH 00175.14

**2101211 COMPRESSOR TECUMSEH FH4518Y/R CSR**  
220/240V 50Hz  
rotalock connections  
power 1.5Hp - displacement 53.20 cc  
gas R134a HMBP



MTH 00117.14

**5077061 COMPRESSOR TECUMSEH FH4518Y/S CSR**  
220/240V 50Hz  
welding connection  
power 1.5Hp - displacement 53.20 cc  
gas R134a HMBP



MTH 00117.2

**5077067 COMPRESSOR TECUMSEH FH4525Y/R CSR**  
220/240V 50Hz  
rotalock connections  
power 2Hp - displacement 74.25 cc  
gas R134a HMBP



MTH 00119.14

**5077066 COMPRESSOR TECUMSEH FH4525Y/S CSR**  
220/240V 50Hz  
welding connection  
power 2Hp - displacement 74.25 cc  
gas R134a HMBP



MTH 00119.2



Suitable for:

**MTH**



**5076950 COMPRESSOR TECUMSEH TAG2516Z/R**  
 400V 50Hz  
 rotalock connections  
 power 4 Hp. displacement 112.50 cc  
 gas R404a/R507 LBP



MTH 00159.30

**5076948 COMPRESSOR TECUMSEH TAG2516Z/S**  
 400V 50Hz  
 welding connection  
 power 4 Hp. displacement 112.50 cc  
 gas R404a/R507 LBP



MTH 00159.32

**5076952 COMPRESSOR TECUMSEH TAG2522Z/R**  
 400V 50Hz  
 rotalock connections  
 power 5 Hp. displacement 134.80 cc  
 gas R404a/R507 LBP



MTH 00160.30

**5076951 COMPRESSOR TECUMSEH TAG2522Z/S**  
 400V 50Hz  
 welding connection  
 power 5 Hp. displacement 134.80 cc  
 gas R404a/R507 LBP



MTH 00160.32

**5077070 COMPRESSOR TECUMSEH TAG4528Y/S**  
 400V 50Hz  
 welding connection  
 power 2.5 Hp - displacement 90.20 cc  
 gas R134a HMBP



MTH 00121.32

**5077075 COMPRESSOR TECUMSEH TAG4537Y/S**  
 400V 50Hz  
 welding connection  
 power 3 Hp - displacement 112.50 cc  
 gas R134a HMBP



MTH 00123.32

**5077078 COMPRESSOR TECUMSEH TAG4543Y/S**  
 400V 50Hz  
 welding connection  
 power 3.5 Hp - displacement 124.40 cc  
 gas R134a HMBP



MTH 00124.32

**5077035 COMPRESSOR TECUMSEH TAG4546Z/R**  
 400V 50Hz  
 rotalock connections  
 power 4 Hp - displacement 90.20 cc  
 gas R404a/R507 HMBP



MTH 00188.30





Suitable for:

Suitable for:

**5077031 COMPRESSOR TECUMSEH TAG4546Z/S**  
 400V 50Hz  
 welding connection  
 power 4 Hp - displacement 90.20 cc  
 gas R404a/R507 HMBP

**5077043 COMPRESSOR TECUMSEH TAG4561Z/R**  
 400V 50Hz  
 rotalock connections  
 power 5 Hp - displacement 112.50 cc  
 gas R404a/R507 HMBP



MTH 00188.32

MTH 00190.32

**5077045 COMPRESSOR TECUMSEH TAG4568Z/R**  
 400V 50Hz  
 rotalock connections  
 power 6 Hp - displacement 124.40 cc  
 gas R404a/R507 HMBP

**5077044 COMPRESSOR TECUMSEH TAG4568Z/S**  
 400V 50Hz  
 welding connection  
 power 6 Hp - displacement 124.40 cc  
 gas R404a/R507 HMBP



MTH 00191.30

MTH 00191.32

**5077051 COMPRESSOR TECUMSEH TAG4573Z/R**  
 400V 50Hz  
 rotalock connections  
 power 6.5 Hp - displacement 134.80 cc  
 gas R404a/R507 HMBP

**5077046 COMPRESSOR TECUMSEH TAG4573Z/S**  
 400V 50Hz  
 welding connection  
 power 6.5 Hp - displacement 134.80 cc  
 gas R404a/R507 HMBP



MTH 00192.32

MTH 00192.30

**3070099 COMPRESSOR TECUMSEH TAJ2446Z/R**  
 400V 50Hz  
 Rotalock suction connection  
 power 1.2 Hp. displacement 26.1 cc  
 gas R404a/R507 LBP

**3070100 COMPRESSOR TECUMSEH TAJ2464Z/R**  
 400V 50Hz  
 Rotalock suction connection  
 power 1.5 Hp. displacement 34.4 cc  
 gas R404a/R507 LBP



MTH 00150.31

MTH 00152.31



Suitable for:

**MTH**



**3070149 COMPRESSOR TECUMSEH TAJ4492Y/R**  
 400V 50Hz  
 Rotalock suction connection  
 power 3/4 Hp. displacement 26 cc  
 gas R134a HMBP



MTH 00113.31

Suitable for:

**3070138 COMPRESSOR TECUMSEH TAJ4517Z/R**  
 400V 50Hz  
 Rotalock suction connection  
 power 1.2 Hp. displacement 25.9 cc  
 gas R404a/R507 HMBP



MTH 00178.31

**3070139 COMPRESSOR TECUMSEH TAJ4519Z/R**  
 400V 50Hz  
 Rotalock suction connection  
 power 1.5 Hp. displacement 34.4 cc  
 gas R404a/R507 HMBP



MTH 00180.31

**3070135 COMPRESSOR TECUMSEH TAJ9480Z/R**  
 400V 50Hz  
 Rotalock suction connection  
 power 5/8 Hp. displacement 15.2 cc  
 gas R404a/R507 HMBP



MTH 00172.31

**3070136 COMPRESSOR TECUMSEH TAJ9510Z/R**  
 400V 50Hz  
 Rotalock suction connection  
 power 3/4 Hp. displacement 18.3 cc  
 gas R404a/R507 HMBP



MTH 00174.31

**3070137 COMPRESSOR TECUMSEH TAJ9513Z/R**  
 400V 50Hz  
 Rotalock suction connection  
 power 1 Hp. displacement 24.2 cc  
 gas R404a/R507 HMBP



MTH 00176.31

**5076947 COMPRESSOR TECUMSEH TFH2480Z/R**  
 400V 50Hz  
 rotalock connections  
 power 2 Hp. displacement 53.20 cc  
 gas R404a/R507 LBP



MTH 00154.30

**2102553 COMPRESSOR TECUMSEH TFH2480Z/S**  
 400V 50Hz  
 welding connection  
 power 2 Hp. displacement 53.20 cc  
 gas R404a/R507 LBP



MTH 00154.32



# MTH



Suitable for:

**2102773 COMPRESSOR TECUMSEH TFH2511Z/R**  
 400V 50Hz  
 rotalock connections  
 power 3 Hp. displacement 74.25 cc  
 gas R404a/R507 LBP



MTH 00156.30

Suitable for:

**2101708 COMPRESSOR TECUMSEH TFH2511Z/S**  
 400V 50Hz  
 welding connection  
 power 3 Hp. displacement 74.25 cc  
 gas R404a/R507 LBP



MTH 00156.32

**5077063 COMPRESSOR TECUMSEH TFH4518Y/S**  
 400V 50Hz  
 welding connection  
 power 1.5Hp - displacement 53.20 cc  
 gas R134a HMBP



MTH 00118.32

**5077022 COMPRESSOR TECUMSEH TFH4522Z/S**  
 400V 50Hz  
 welding connection  
 power 1.8 Hp - displacement 39.95 cc  
 gas R404a/R507 HMBP



MTH 00182.32

**2102343 COMPRESSOR TECUMSEH TFH4524Z/R**  
 400V 50Hz  
 rotalock connections  
 power 2 Hp - displacement 43.50 cc  
 gas R404a/R507 HMBP



MTH 00184.30

**5077027 COMPRESSOR TECUMSEH TFH4524Z/S**  
 400V 50Hz  
 welding connection  
 power 2 Hp - displacement 43.50 cc  
 gas R404a/R507 HMBP



MTH 00184.32

**5077065 COMPRESSOR TECUMSEH TFH4525Y/R**  
 400V 50Hz  
 rotalock connections  
 power 2Hp - displacement 74.25 cc  
 gas R134a HMBP



MTH 00120.30

**5077064 COMPRESSOR TECUMSEH TFH4525Y/S**  
 400V 50Hz  
 welding connection  
 power 2Hp - displacement 74.25 cc  
 gas R134a HMBP



MTH 00120.32



Suitable for:

# MTH



**5077030 COMPRESSOR TECUMSEH TFH4531Z/R**  
 400V 50Hz  
 rotalock connections  
 power 2.5 Hp - displacement 56.65 cc  
 gas R404a/R507 HMBP



MTH 00186.30

Suitable for:

**5077028 COMPRESSOR TECUMSEH TFH4531Z/S**  
 400V 50Hz  
 welding connection  
 power 2.5 Hp - displacement 56.65 cc  
 gas R404a/R507 HMBP



MTH 00186.32

**5077034 COMPRESSOR TECUMSEH TFH4540Z/R**  
 400V 50Hz  
 rotalock connections  
 power 3 Hp - displacement 74.25 cc  
 gas R404a/R507 HMBP



MTH 00187.30

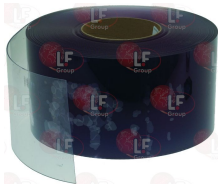
**5077033 COMPRESSOR TECUMSEH TFH4540Z/S**  
 400V 50Hz  
 welding connection  
 power 3 Hp - displacement 74.25 cc  
 gas R404a/R507 HMBP



MTH 00187.32

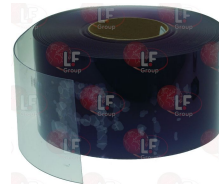
## Curtains

**3028001 CURTAIN OF TRANSPARENT PVC**  
 50 m roll - width 190 mm thickness 2 mm  
 suitable for cold rooms TN(0°C)



MTH 11AAL080-00000

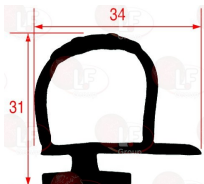
**3028020 CURTAIN OF TRANSPARENT PVC**  
 roll 50 m - width 190 mm thickness 2 mm  
 suitable for cold rooms BT(-20°C)



MTH 11AAL081-00000

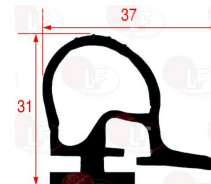
## Gaskets in bundles

**3286528 COLD ROOM GASKET - 17 m**  
 black color  
 dimensions 34x31 mm  
 for MTH doors  
 480TN-480LWT-450GV  
 450BIN.INT-603LWT-740LWT



MTH 11PLG001-11015

**3286542 COLD ROOM GASKET - 20 m**  
 black color  
 dimensions 37x31 mm  
 for heating element installation  
 for MTH doors  
 480LWT-603LWT-740LWT



MTH 11PLR001-11016

Suitable for:

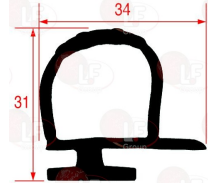
**3286074 COLD ROOM GASKET - 26 m**  
black color  
dimensions 25x24 mm  
for doors MTH



MTH 11PLP001-11014

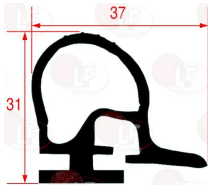
Suitable for:

**3286527 COLD ROOM GASKET - 6 m**  
black color  
dimensions 34x31 mm  
for MTH doors  
480TN-480LWT-450GV  
450BIN.INT-603LWT-740LWT



MTH 11PLG001-11015

**3286541 COLD ROOM GASKET - 6 m**  
black color  
dimensions 37x31 mm  
for heating element installation  
for MTH doors  
480LWT-603LWT-740LWT



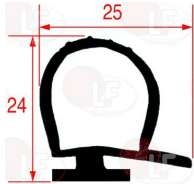
MTH 11PLR001-11016

**3286519 COLD ROOM GASKET - 7 m**  
profile dimensions 25x24 mm  
black color  
for MTH doors



MTH 11PLP001-11014

**3286111 GASKET FOR COLD ROOM - 3 m**



MTH

MTH 11PLP001-11014

## Handles

**3242700 EXTERNAL HANDLE WITH KEY-LOCK 500TN**  
200x110xh50 mm



MTH 13CEC001-13022

MTH 13CEC002-13020

**3242703 EXTERNAL HANDLE 480TN COMPLETE**  
handle length 555 mm  
for COLD ROOMS model 480TN-480LWT-480GV-480BIN.INT



MTH 13SEF041-13055

MTH 13SEF048-00000

**3242702 EXTERNAL HANDLE 500TN**  
without lock  
200x110xh50 mm



MTH 13CES001-13021

MTH 13CES002-13019



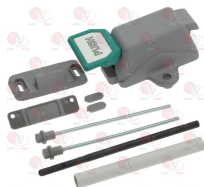


Suitable for:

# MTH



**3242701 INTERNAL HANDLE CSI 500TN**  
79x145 mm  
distance between fixing holes 110 mm



MTH 13CIN001-13023

MTH 13CIN002-13030

**3250226 SPRING FOR INTERNAL CATCH**  
for handles from 2013 onwards  
for old model the handle requires replacing  
LF code 3242701



MTH 13CSC604-00000

MTH 13CSC605-00000

**3242704 INTERNAL HANDLE 480TN NEW TYPE RH**  
length 765 mm  
mounting bracket 165x60 mm  
for COLD ROOMS model 480TN-480LWT-480GV-480BIN.INT



MTH 13SIF001-13050

## Hinges, catches and accessories

**3053440 SELF ADJUSTABLE HINGE WITH RAMP H35**  
for semi-built-in door 40 mm  
mounting distance 38-24 mm - 38-18 mm



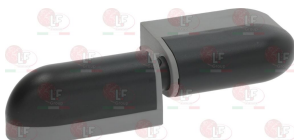
MTH 14PLG100-14032

**3053461 SELF ADJUSTABLE HINGE WITH RAMP H45**  
for door leaf 68 mm  
mounting distance 38-24 mm



MTH 14PLG200-14033

**3053508 SELF ADJUSTABLE HINGE WITH RAMP H55**  
for door leaf 100 mm  
mounting distance 38-24 mm



MTH 14PLG201-14034

---

**Liquid receivers**

---

**3370009 LIQUID COLLECTOR 0.88 L**

ø 77 - height 220 mm

inlet 6.2 - outlet 6.2

fastening screw M8



MTH 03902

---

**Springs**

---

**3250226 SPRING FOR INTERNAL CATCH**

for handles from 2013 onwards

for old model the handle requires replacing

LF code 3242701



MTH 13CSC604-00000

MTH 13CSC605-00000

The data herewith contained may change without notice and LF SpA cannot be held responsible for possible errors stated or resulting by the use of this document. All rights reserved. No part of this publication may be reproduced without written permission by LF SpA.



## Distributing Components, Spare Parts & Accessories in original quality worldwide

- 
- LF SpA HEADQUARTERS**  
via Voltri, 80 - 47522 Cesena (FC) ITALY  
Tel. +39 0547 34 11 11 - Fax +39 0547 34 11 10  
[www.lfircambi724.it](http://www.lfircambi724.it) - [info@lfircambi.it](mailto:info@lfircambi.it)  
Export Dept. Tel. +39 0547 34 11 50 - Fax +39 0547 34 11 55  
[www.lfspareparts724.com](http://www.lfspareparts724.com) - [export@lfspareparts.com](mailto:export@lfspareparts.com)
- LF SpA HOUSEHOLD COMPONENTS DIVISION**  
Via Padriciano, 99 - AREA Science Park - 34149 Trieste (TS) ITALY  
Tel. +39 0547 34 12 42 - Fax +39 0547 34 12 48  
[www.lfspareparts724.com](http://www.lfspareparts724.com) - [info@lfspareparts.com](mailto:info@lfspareparts.com)
- EPGC Sas FRANCE**  
13, Rue des Forts - 59960 Neuville en Ferrain  
Tel. +33 (0)3 20 25 06 21 - Fax +33 (0)3 20 25 34 12  
[www.epgc.com](http://www.epgc.com) - [epgc@epgc.com](mailto:epgc@epgc.com)
- LF GmbH GERMANY**  
Junkersstrasse, 3 - D-82178 Puchheim - München  
Tel. +49 89 89 45 78 66 - Fax +49 89 89 45 78 88  
[www.lfersatzteile724.de](http://www.lfersatzteile724.de) - [info@lfersatzteile.de](mailto:info@lfersatzteile.de)
- LF China REPUBLIC OF CHINA**  
Room 403, No.2, Huadu Mansion, Lane 422, Huanghua Rd.  
Minhang Dist. - 201103 Shanghai  
Tel. +86 (0)21 33 53 66 31 - Fax +86 (0)21 33 53 66 32  
[www.lfspareparts724.com](http://www.lfspareparts724.com) - [china@lfspareparts.com](mailto:china@lfspareparts.com)
- OOO LF RUSSIAN FEDERATION**  
Ul. Anatoliya Zhivova, 8 - office 1 - 123100 Moscow  
Tel./Fax +7 495 725 26 53  
[www.lfspareparts724.ru](http://www.lfspareparts724.ru) - [info@lfspareparts.ru](mailto:info@lfspareparts.ru)
- LF Repuestos Horeca S.L.U. SPAIN**  
Poligono Industrial Carpetania - C/Miguel Faraday, 8 - 28906 Getafe  
Tel. +34 91 477 91 00 - Fax +34 91 477 90 81  
[www.lfrepuestos-horeca724.es](http://www.lfrepuestos-horeca724.es) - [info@lfrepuestos.es](mailto:info@lfrepuestos.es)
- LF Scandinavia Aps - LF Spareparts S.p.A. DENMARK**  
Nupark, 51 - 7500 Holstebro  
Tel. +45 70 70 77 33  
[www.lfspareparts724.dk](http://www.lfspareparts724.dk) - [denmark@lfspareparts.dk](mailto:denmark@lfspareparts.dk)
- LF SpA Cesena (IT) Swiss Branch Steinhausen SWITZERLAND**  
Sennweidstrasse, 45 - CH-6312 Steinhausen  
Tel. +41 (0)41 760 15 80/1 - Fax +41 (0)41 760 15 85  
[www.lfersatzteile724.ch](http://www.lfersatzteile724.ch) - [info@lfersatzteile.ch](mailto:info@lfersatzteile.ch)
- LF Spare Parts Ltd. UNITED KINGDOM**  
A10a Lakeside Business Park, Broadway Lane  
South Cerney, Gloucestershire GL7 5XL  
Tel. +44 (0)1285 86 16 25 - Fax +44 (0)1285 86 39 49  
[www.lfspareparts724.co.uk](http://www.lfspareparts724.co.uk) - [info@lfspareparts.co.uk](mailto:info@lfspareparts.co.uk)
- LF Central Est Europe S.r.o. CZECH REPUBLIC**  
Antala Staska 1859/34  
14000 Praha 4 - KRC  
Tel. +420 730 156 910  
[www.lfspareparts724.cz](http://www.lfspareparts724.cz) - [info@lfspareparts.cz](mailto:info@lfspareparts.cz)
- LF SPARE PARTS INC. USA**  
Legal address:  
155 Office Plaza Dr - Suite A - Tallahassee, FL 32301  
Business/Mailing address:  
1100 South Tower, 225 Peachtree St., N.E. - Atlanta, GA 30303, USA  
Tel. +1-404-525-2600 - Fax +1-404-586-3528  
[www.lfspareparts724.us](http://www.lfspareparts724.us) - [info@lfspareparts.us](mailto:info@lfspareparts.us)  
Tel. West Coast and Midwest: 206-349-1525 Sauro  
Tel. East Coast and the Caribbean: 786-817-1764 Luis
- 
- AUSTRALIA AND NEW ZEALAND**  
[www.lfspareparts724.com](http://www.lfspareparts724.com)  
[andrea.calvio@lfspareparts.com](mailto:andrea.calvio@lfspareparts.com)
- AUSTRIA**  
[www.lfersatzteile724.at](http://www.lfersatzteile724.at)  
[info@lfersatzteile.at](mailto:info@lfersatzteile.at)
- BALKAN COUNTRIES**  
[www.lfspareparts724.com](http://www.lfspareparts724.com)  
[matija.ramov@lfspareparts.com](mailto:matija.ramov@lfspareparts.com)
- BALTIC COUNTRIES**  
[www.lfspareparts724.com](http://www.lfspareparts724.com)  
[inara.silina@lfspareparts.com](mailto:inara.silina@lfspareparts.com)
- LATIN AMERICA AND THE CARRIBEANS**  
[www.lfrepuestos-horeca724.es](http://www.lfrepuestos-horeca724.es)  
[export@lfrepuestos.es](mailto:export@lfrepuestos.es)
- POLAND**  
[www.lfspareparts724.pl](http://www.lfspareparts724.pl)  
[info@lfspareparts.pl](mailto:info@lfspareparts.pl)
- SOUTH KOREA**  
[www.lfspareparts724.com](http://www.lfspareparts724.com)  
[fabio.doni@lfspareparts.com](mailto:fabio.doni@lfspareparts.com)
- TURKEY**  
[www.lfyedekparca724.com](http://www.lfyedekparca724.com)  
[export@lfspareparts.com](mailto:export@lfspareparts.com)