



Spare parts for the professional sector: Commercial refrigeration



Suitable for:

ISA - TASSELLI



This catalogue is automatically generated.
Therefore, the sequence of the items might
not be always shown at best.
Updates will be issued in case of additions
and/or amendments.

Suitable universal spare parts may not be included

Rel. 2018-02160915





Suitable for:

ISA - TASSELLI



Suitable for:

Axial motor fans

3540001 SUNON FANS + BRACKETS ASSEMBLY
N.2 MC30151V2-000U-A99 12Vdc 0.45W 7000rpm
30x30x15 mm



ISA - TASSELLI 418000124200

Compressors and spare parts

3070267 COMPRESSOR EMBRACO EMT2125U CSIR
220/240V 50Hz
power 1/3 Hp, displacement 5.96 cc
gas R290 LBP
ASPERA



ISA - TASSELLI 452500005000

3070268 COMPRESSOR EMBRACO NEK2134U CSIR
220/240V 50Hz
power 1/2 Hp, displacement 10.00 cc
gas R290 LBP
ASPERA



ISA - TASSELLI 452500001000

3070259 COMPRESSOR EMBRACO NEK2150U CSIR
220/240V 50Hz
power 1/2 Hp, displacement 13.54 cc
gas R290 LBP
ASPERA



ISA - TASSELLI 452500019000

3070269 COMPRESSOR EMBRACO NEK2160U CSR
220/240V 50Hz
power 5/8 Hp, displacement 16,80 cc
gas R290 LBP
ASPERA



ISA - TASSELLI 452500016000

3070273 COMPRESSOR EMBRACO NEK6210U CSIR
220/240V 50hz
power 3/8 Hp, displacement 8.78 cc
gas R290 HMBP
ASPERA



ISA - TASSELLI 452500003000

3070257 COMPRESSOR EMBRACO NJ2192GK CSR GEMINI
220/240V, 50Hz
power 1.2 Hp, displacement 26.20 cc
gas R404a/R507 LBP
with oil equalisation
ASPERA



ISA - TASSELLI 452400055000



ISA - TASSELLI



Suitable for:

3070258 COMPRESSOR EMBRACO NJ2212GK CSR GEMINI
220/240V, 50Hz
power 1,7 HP, displacement 34.37 cc
gas R404a/R507 LBP
with oil equalization
ASPERA



ISA - TASSELLI 452452285000

Suitable for:

3070271 COMPRESSOR EMBRACO NT2170U CSR
220/240V, 50Hz
power 3/4 Hp, displacement 20.44 cc
gas R290 LBP
ASPERA



ISA - TASSELLI 452500000000

3070170 COMPRESSOR EMBRACO NT2180GK CSR
220/240V 50Hz
power 1 Hp, displacement 20.40 cc
gas R404a/R507 LBP
ASPERA



ISA - TASSELLI 452400022000

3070188 COMPRESSOR EMBRACO NT6222GK CSR
220/240V 50Hz
power 3/4 Hp, displacement 17.40 cc
gas R404a/R507 HMBP
ASPERA



ISA - TASSELLI 452400041000

Door catches

3398087 DOOR CATCH
mounting distance 27 mm



ISA - TASSELLI 50230200300

Drip trays for refrigeration

3015084 DRIP TRAY
400x295x90 mm
with hole for PTC cartridge heating element



ISA - TASSELLI 442200767000

ISA - TASSELLI 442254412000

7111680 DRIP TRAY PLASTIC
400x293x90 mm



ISA - TASSELLI 442200766000

ISA - TASSELLI 442248697000



Suitable for:

ISA - TASSELLI



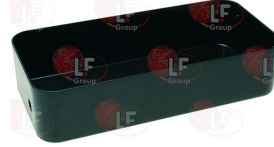
3015081 PLASTIC DRIP TRAY
370x100x90 mm



ISA - TASSELLI 442107704000

Suitable for:

3015082 PLASTIC DRIP TRAY
385x180x90 mm
with hole for cartridge heating element



ISA - TASSELLI 442200771000

ISA - TASSELLI 442243696000

3015083 PLASTIC DRIP TRAY
470x255x95-120 mm
with hole for cartridge heating element



ISA - TASSELLI 442200769000

ISA - TASSELLI 442241872100

Electronic controllers

3390388 BOARD DISPLAY CAREL PSTIALR400
mounting hole 138.5x29 mm
ISA-TASSELLI configuration



ISA - TASSELLI 418236624000

3445417 BOARD DISPLAY DIXELLT840-100D0-X
8 buttons for panels format K
customized ISA-TASSELLI



ISA - TASSELLI 418249562000

5072869 CONTROLLER CAREL IRIAF0EHA1
230V 50/60Hz
1 relay output 12A for compressor
1 relay output 8A for defrosting
1 relay output 5A for fan
2 NTC probes (not included)
1 digital input
dimension 75x34x depth 60 mm
mounting hole 71x29 mm
ISA-TASSELLI setting



ISA - TASSELLI 418246193000

3445416 CONTROLLER CAREL PYIA1Z052N
230V 50/60Hz
1 relay outlet 12A for compressor
1 relay output 8A for defrosting
1 relay output 8A for ventilator
2 NTC probes (not included)
serial output for programming key
front dimensions 81x36 mm
mounting hole 71x29 mm
PZIACOH010K
ISA-TASSELLI configured



ISA - TASSELLI 418200900000

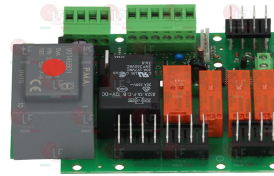


3445439 CONTROLLER CAREL PYIA1Z055P
 230V 50/60Hz
 1 outlet relay 12A for compressor
 1 outlet relay 8A for fan
 1 outlet relay 8A for light
 2 NTC probes (not included)
 1 digital configurable inlet
 serial output for programming key
 frontal dimensions 81x36 mm
 mounting hole 71x29 mm
 PZIAC0H01K
 configured ISA-ANCHORS



ISA - TASSELLI 418200101100

3445418 CONTROLLER DIXELL XM470K-510C1
 230V 50/60Hz
 day-board
 1 relay output 8A for compressor
 1 relay output 16A for light
 1 relay output 8A for evaporator fans
 1 relay output 20A for defrosting
 1 relay output 16A for aux
 3 NTC probes (not included)
 1 programmable digital input
 1 energy saving digital input
 RS485 serial output
 X-REP remote display output
 RTC internal timer function

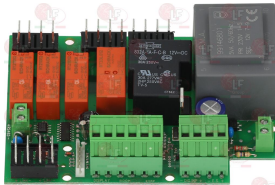


ISA - TASSELLI 418200133000

ISA - TASSELLI 418249561100

ISA - TASSELLI 418249561200

3445420 CONTROLLER DIXELL XM470K-510C1
 230V 50/60Hz
 day-board
 1 relay output 20A for compressor
 1 relay output 16A for light
 1 relay output 8A for evaporator fans
 1 relay output 8A for defrosting
 1 relay output 8A for aux
 2 NTC probes (not included)
 1 door microswitch digital input
 RS485 serial output
 RTC internal timer function
 X-REP remote display output
 touch sensor output



ISA - TASSELLI 418200076000

ISA - TASSELLI 418200076100

3445412 CONTROLLER DIXELL XR44CH-0N0C8
 12Vac/dc
 1 relay output 16A for compressor 1
 1 relay output 16A for compressor 2
 1 relay output 16A for defrosting 1
 1 relay output 16A for defrosting 2
 3 selectable NTC/PTC probes (not included)
 1 programmable digital input
 hot key input
 front dimension 78x34xdepth 59 mm
 mounting hole 71x29 mm
 ISA-TASSELLI configuration



ISA - TASSELLI 418200130000

ISA - TASSELLI 418200130100

ISA - TASSELLI 418256848200

3445428 CONTROLLER DIXELL XR72CX-0N0C8-U
 12Vac/dc
 1 relay output 16A for compressor 1
 1 relay output 16A for compressor 2
 1 relay output 16A for defrosting
 1 relay output 16A for ventilator
 2 selectable NTC/PTC probes (not included)
 1 programmable digital input
 hot key/TTL input
 front dimension 78x34xdepth 59 mm
 mounting hole 71x29 mm
 ISA-TASSELLI configuration



ISA - TASSELLI 418257552000

3445413 CONTROLLER DIXELL XW260L-5N0D0-X
 230V 50/60Hz
 1 relay output 20A for compressor
 1 relay output 16A for defrosting
 1 relay output 8A for ventilator
 1 relay output 8A for aux
 3 NTC probes (not included)
 1 door microswitch digital input
 1 programmable digital input
 hot key input
 front dimension 185x38
 mounting hole 150x31 mm
 ISA-TASSELLI configuration



ISA - TASSELLI 418253494000



Suitable for:

ISA - TASSELLI



5078111 CONTROLLER DIXELL XW30LS-5N0C3-X
 230V 50/60Hz
 1 relay output 20A for compressor
 1 relay output 7A for defrosting/light
 1 relay output 7A for fan
 2 NTC probes (not included)
 1 digital input
 dimension 184x37x depth 46 mm
 mounting hole 150x31 mm
 ISA-TASSELLI setting



ISA - TASSELLI 418200048100

Suitable for:

3445414 CONTROLLER ELIWELL EWPlus 974
 230V 50/60Hz
 1 relay output 2Hp for compressor
 1 relay output 8A aux
 1 relay output 5A aux
 2 selectable NTC (not included)
 1 programmable digital input
 TTL input for copy card connection
 front dimension 74x32xdepth 59 mm
 mounting hole 71x29 mm
 EW2EDIOXC4713
 ISA-TASSELLI configuration
 extractable terminals version



ISA - TASSELLI 418200073000

ISA - TASSELLI 418200073100

ISA - TASSELLI 418200073200

3445415 CONTROLLER ELIWELL EWPlus 974
 230V 50/60Hz
 1 relay output 12A for compressor
 1 relay output 8A aux
 1 relay output 5A aux
 2 selectable NTC/PTC probes (not included)
 1 programmable digital input
 TTL input for copy card connection
 front dimension 74x32xdepth 59 mm
 mounting hole 71x29 mm
 EW2EDIOXC4712
 ISA-TASSELLI configuration



ISA - TASSELLI 418200053000

ISA - TASSELLI 418200053100

ISA - TASSELLI 418200053200

ISA - TASSELLI 418227691000

3445427 CONTROLLER ELIWELL EW974
 230V 50/60Hz
 1 relay output 2Hp for compressor
 1 relay output 8A for defrosting
 1 relay output 5A for ventilator
 2 NTC probes (not included)
 1 programmable digital input
 TTL input for copy card connection
 front dimension 74x32xdepth 59 mm
 mounting hole 71x29 mm
 EW2EDIOXCH703
 ISA-TASSELLI configuration



ISA - TASSELLI 418200064100

7110871 CONTROLLER ELSTAT EMS100 NEXO
 12Vac 50/60Hz
 1 relay output 10A for compressor
 1 relay output 4A for fan
 1 relay output 4A for light
 1 auxiliary input
 3 probe inputs (not included)
 front 142.5x63 mm
 mounting hole 121x41 mm



ISA - TASSELLI 418200046000

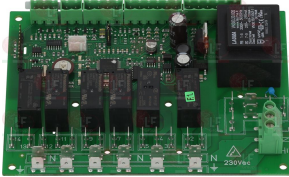
ISA - TASSELLI 418200129000

3390390 DISPLAY CAREL PST01VR100
 1 NTC probe (not included)
 mounting hole 71x29 mm



ISA - TASSELLI 418236625000

- 3445424 ELECTRON.CIRCUIT BOARD CAREL PSBIA01110**
 115/230Vac
 1 relay output 2Hp for compressor
 1 relay output 16A for defrosting
 1 relay output 10A for ventilators
 1 relay output 10A for alarm
 1 relay output 16A for light
 1 relay output 10A for demisting heating element
 2 digital inputs
 LAN serial connection
 3 NTC probes (not included)
 RTC timer function
 personalised ISA-TASSELLI



ISA - TASSELLI 418236623000

- 7107953 THERMOSTAT ELIWELL ID PLUS 971**
 230V 50/60Hz
 1 relay output 2 HP compressor
 1 relay output 8A for defrosting
 1 relay output 5A Propeller
 1 digital input / configurable temperature
 1 digital input configurable
 TTL input for Copy Card
 with alarm
 Front dimensions 74x32x 59 mm depth
 cutout 71x29 mm



- 7101290 PROTECTION THERMOSTAT**



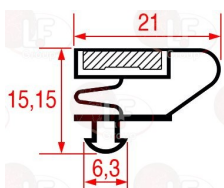
ISA - TASSELLI 418227413000

- 3445913 SILICONE PROBE NTC 1500 mm**
 temperature range -50+110°C
 bulb \varnothing 6x40 mm



Gaskets for refrigerators

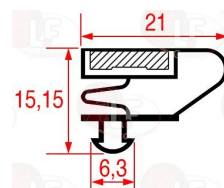
- 3186885 SNAP-IN DOOR GASKET 1320x632 mm**



ISA - TASSELLI

ISA - TASSELLI 424019211000

- 3186884 SNAP-IN DOOR GASKET 760x690 mm**



ISA - TASSELLI



ISA - TASSELLI

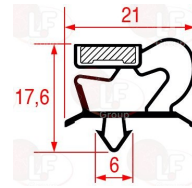
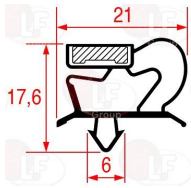


Suitable for:

Suitable for:

5037526 SNAP-IN GASKET 1550x683 mm

3186729 SNAP-IN GASKET 1565x680 mm

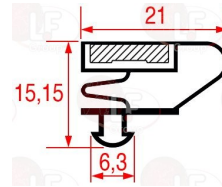
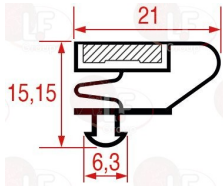


ISA - TASSELLI 21009

ISA - TASSELLI LF-7100372

5035801 SNAP-IN GASKET 1565x689 mm

3186883 SNAP-IN GASKET 1570x690 mm

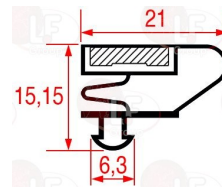
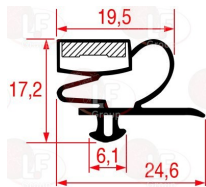


ISA - TASSELLI 29009

ISA - TASSELLI

3186725 SNAP-IN GASKET 1615x649 mm

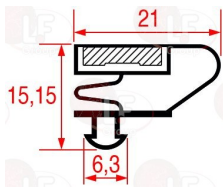
3286099 SNAP-IN GASKET 432x180 mm



ISA - TASSELLI 28047721

ISA - TASSELLI 29013

3186709 SNAP-IN GASKET 616x436 mm



ISA - TASSELLI 29012

Grids for oven

3185962 CHROME-PLATED GRID 532x410 mm

3185961 CHROME-PLATED GRID 532x505 mm



ISA - TASSELLI

ISA - TASSELLI

3185965 CHROME-PLATED GRID 540x367xh27 mm

3185982 CHROME-PLATED GRID 720x532 mm



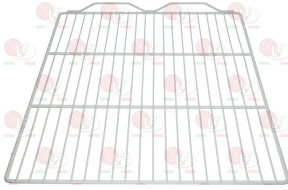
ISA - TASSELLI

ISA - TASSELLI

Suitable for:

Suitable for:

5073345 GRID PLASTIC-COATED 650x530 mm
20 threads \varnothing 3 mm - with double upstand



ISA - TASSELLI 24439

Guides

5067646 SLIDE FOR TRAYS-HOLDER 595x43x18 mm
GE700TN



ISA - TASSELLI 24589

ISA - TASSELLI 430207349000

ISA - TASSELLI 430227570100

Handles

3242757 HANDLE ART-MPA GREY
length 320 mm - height 49 mm
mounting distance 275 mm
with white insert



ISA - TASSELLI 491094841000

3242756 HANDLE RED D-ICE
length 130 mm



ISA - TASSELLI 442200560000

ISA - TASSELLI 442200560100

ISA - TASSELLI 491000292100

Heating elements

3455477 CARTRIDGE HEATING ELEMENT PTC 250W 230V
cartridge length 130 mm \varnothing 12 mm
fitting 3/8"G
cable length 4000 mm



ISA - TASSELLI 418500028000

3455479 CARTRIDGE HEATING ELEMENT PTC 400W 230V
cartridge length 240 mm \varnothing 12 mm
fitting 3/8"G
cable length 1000 mm



ISA - TASSELLI 418500030000

ISA - TASSELLI 418500030100



Suitable for:

ISA - TASSELLI



3455478 CARTRIDGE HEATING ELEMENT PTC 700W 230V

ø 12 mm
cartridge length 370 mm
cartridge width 90 mm
fitting 3/8"G
cable length 1500 mm



ISA - TASSELLI 418500020000

Suitable for:

3455044 HEATING ELEMENT 400W 230V

length 380 mm
width 195 mm



ISA - TASSELLI 30518770

3455480 HEATING ELEMENT 600W 230V

length 295 mm
width 170 mm
height 110 mm



ISA - TASSELLI 418503086200

Hinges, catches and accessories

3053596 HINGE BRACKET LH LOWER



ISA - TASSELLI 442700042005

3053610 HINGE BRACKET LH ML/SY



ISA - TASSELLI 442700041005

3053600 HINGE BRACKET RH



ISA - TASSELLI 442700043005

3053609 HINGE BRACKET RH



ISA - TASSELLI 442700044005

3053920 LONG PIN HINGE INTERTECNICA 28L with square pin 7.5 mm



ISA - TASSELLI 24563

3053617 LOWER DOOR HINGE LH ML/SY

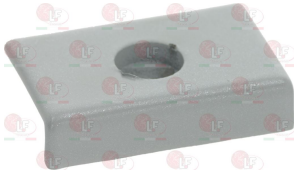


ISA - TASSELLI 442700045005



Suitable for:

3053597 LOWER HINGE FOR DOOR RH



ISA - TASSELLI 442700040005

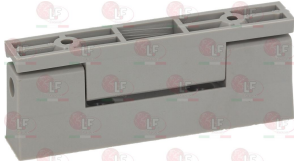
Suitable for:

3053598 PLASTIC HINGE BLACK



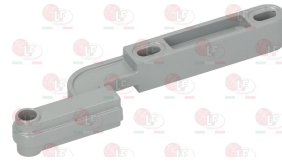
ISA - TASSELLI 50230102400

3053599 PLASTIC HINGE GREY



ISA - TASSELLI 50230102300

5063369 UPPER HINGE BRACKET
length 185 mm



ISA - TASSELLI 442700039005

Microswitches, mechanical

3240294 MICROSWITCH ARCOLECTRIC E3111
1-NO 1-NC 5A 250V
white colour



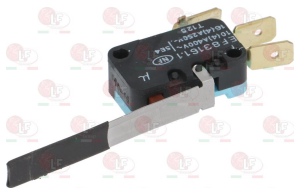
ISA - TASSELLI 50500501500

3803110 MICROSWITCH CHERRY D3B6-V3RD
1NO+1NC 8(8)A 250V
with roll lever 27 mm
terminals faston 6.3x0.8 mm
gap contacts >3mm



ISA - TASSELLI 50500501000

3803113 MICROSWITCH CROUZET EF83161.1
1NO+1NC 16A 250V complete with lever 50 mm



ISA - TASSELLI 27537

Motors

3240632 MOTOR COPREL W5/2A P.30 IV LC1
230V 50/60Hz 35/5W 2500rpm
cable length 1300 mm



ISA - TASSELLI 418113259000



Suitable for:

ISA - TASSELLI



Suitable for:

Motors

3240868 MOTOR MAFS 12 WITH RING \varnothing 145-113 mm
230V 50/60Hz 9W 2700rpm
with bearings



ISA - TASSELLI 418129631000

3240870 FAN OF ALUMINIUM \varnothing 96 mm
26° sucking



3240871 FAN OF ALUMINIUM \varnothing 96 mm
26° pressure



3240872 THREE-POLE CABLE W/CONNECTOR 1500 mm



Reversing valves for refrigeration

3150056 REVERSING VALVE V2-408060
suction 12.84 mm - discharge 9.67 mm
capacity KW 2.81..6.33 (R22 - R407C)



ISA - TASSELLI 50600401200

3150055 COIL WITH CABLE 230V LDK 41
50Hz 5W - 60Hz 4W
cable length 1200 mm



ISA - TASSELLI 50504200500

Switches

1319202 BIPOLAR SWITCH GREEN 16A 250V
16(4)A 2500V - with indicator light
silk-screen printing 0 - I
max. temperature 120°C
mounting hole 22x30 mm



ISA - TASSELLI 30354050

3319780 BLOCK CONNECTION WHITE 22x30 mm



3319779 BLOCK CONNECTIONS BLACK 22x30 mm



3319782 FRAME SAFETY 2 SIDES BLACK 22x30 mm





Suitable for:

3319783 FRAME SAFETY 4 SIDES BLACK 22x30 mm



ISA - TASSELLI



Suitable for:

3319501 PUSH-BUTTON PROTECTION CAP
external dimensions 29x36 mm
for switches with mounting hole 22x30 mm



Tangential and radial motor fans

3526900 TANGENTIAL FAN QLK45 300 mm LEFT
230V 50/60Hz - \varnothing 45 mm
QLK45/0030 A35-2524L-70



ISA - TASSELLI 50501502200

3805021 TANGENTIAL FAN 240x2 mm W/CABLE
40W - 230V 50/60Hz - \varnothing 60 mm DOUBLE
T°max 60°C
TAD24B-016



ISA - TASSELLI 50501506800

3805022 TANGENTIAL FAN 300x2 mm W/CABLE
55W - 230V 50/60Hz - \varnothing 60 mm DOUBLE
T°max 60°C
TAD30B-009



ISA - TASSELLI 50501506900

Transformers

3739030 TRANSFORMER MEAN WELL LPH-18-24
input 200-240Vac 50/60Hz 0.3A
output 24Vdc 0.75A 18W



ISA - TASSELLI 419000015000

The data herewith contained may change without notice and LF SpA cannot be held responsible for possible errors stated or resulting by the use of this document. All rights reserved. No part of this publication may be reproduced without written permission by LF SpA.



Distributing Components, Spare Parts & Accessories in original quality worldwide

-
- LF SpA HEADQUARTERS**
via Voltri, 80 - 47522 Cesena (FC) ITALY
Tel. +39 0547 34 11 11 - Fax +39 0547 34 11 10
www.lfricambi724.it - info@lfricambi.it
Export Dept. Tel. +39 0547 34 11 50 - Fax +39 0547 34 11 55
www.lfspareparts724.com - export@lfspareparts.com
- LF SpA HOUSEHOLD COMPONENTS DIVISION**
Via Padriciano, 99 - AREA Science Park - 34149 Trieste (TS) ITALY
Tel. +39 0547 34 12 42 - Fax +39 0547 34 12 48
www.lfspareparts724.com - info@lfspareparts.com
- EPGC Sas FRANCE**
13, Rue des Forts - 59960 Neuville en Ferrain
Tel. +33 (0)3 20 25 06 21 - Fax +33 (0)3 20 25 34 12
www.epgc.com - epgc@epgc.com
- LF GmbH GERMANY**
Junkersstrasse, 3 - D-82178 Puchheim - München
Tel. +49 89 89 45 78 66 - Fax +49 89 89 45 78 88
www.lfersatzteile724.de - info@lfersatzteile.de
- LF China REPUBLIC OF CHINA**
Room 403, No.2, Huadu Mansion, Lane 422, Huanghua Rd.
Minhang Dist. - 201103 Shanghai
Tel. +86 (0)21 33 53 66 31 - Fax +86 (0)21 33 53 66 32
www.lfspareparts724.com - china@lfspareparts.com
- OOO LF RUSSIAN FEDERATION**
Ul. Anatoliya Zhivova, 8 - office 1 - 123100 Moscow
Tel./Fax +7 495 725 26 53
www.lfspareparts724.ru - info@lfspareparts.ru
- LF Repuestos Horeca S.L.U. SPAIN**
Poligono Industrial Carpetania - C/Miguel Faraday, 8 - 28906 Getafe
Tel. +34 91 477 91 00 - Fax +34 91 477 90 81
www.lfrepuestos-horeca724.es - info@lfrepuestos.es
- LF Scandinavia Aps - LF Spareparts S.p.A. DENMARK**
Nupark, 51 - 7500 Holstebro
Tel. +45 70 70 77 33
www.lfspareparts724.dk - denmark@lfspareparts.dk
- LF SpA Cesena (IT) Swiss Branch Steinhausen SWITZERLAND**
Sennweidstrasse, 45 - CH-6312 Steinhausen
Tel. +41 (0)41 760 15 80/1 - Fax +41 (0)41 760 15 85
www.lfersatzteile724.ch - info@lfersatzteile.ch
- LF Spare Parts Ltd. UNITED KINGDOM**
A10a Lakeside Business Park, Broadway Lane
South Cerney, Gloucestershire GL7 5XL
Tel. +44 (0)1285 86 16 25 - Fax +44 (0)1285 86 39 49
www.lfspareparts724.co.uk - info@lfspareparts.co.uk
- LF Central Est Europe S.r.o. CZECH REPUBLIC**
Antala Staska 1859/34
14000 Praha 4 - KRC
Tel. +420 730 156 910
www.lfspareparts724.cz - info@lfspareparts.cz
- LF SPARE PARTS INC. USA**
Legal address:
155 Office Plaza Dr - Suite A - Tallahassee, FL 32301
Business/Mailing address:
1100 South Tower, 225 Peachtree St., N.E. - Atlanta, GA 30303, USA
Tel. +1-404-525-2600 - Fax +1-404-586-3528
www.lfspareparts724.us - info@lfspareparts.us
Tel. West Coast and Midwest: 206-349-1525 Sauro
Tel. East Coast and the Caribbean: 786-817-1764 Luis
-
- AUSTRALIA AND NEW ZEALAND**
www.lfspareparts724.com
andrea.calvio@lfspareparts.com
- AUSTRIA**
www.lfersatzteile724.at
info@lfersatzteile.at
- BALKAN COUNTRIES**
www.lfspareparts724.com
matija.ramov@lfspareparts.com
- BALTIC COUNTRIES**
www.lfspareparts724.com
inara.silina@lfspareparts.com
- LATIN AMERICA AND THE CARRIBEANS**
www.lfrepuestos-horeca724.es
export@lfrepuestos.es
- POLAND**
www.lfspareparts724.pl
info@lfspareparts.pl
- SOUTH KOREA**
www.lfspareparts724.com
fabio.doni@lfspareparts.com
- TURKEY**
www.lfyedekparca724.com
export@lfspareparts.com