



Spare parts for the professional sector: Coffee grinders



Suitable for:

WEGA



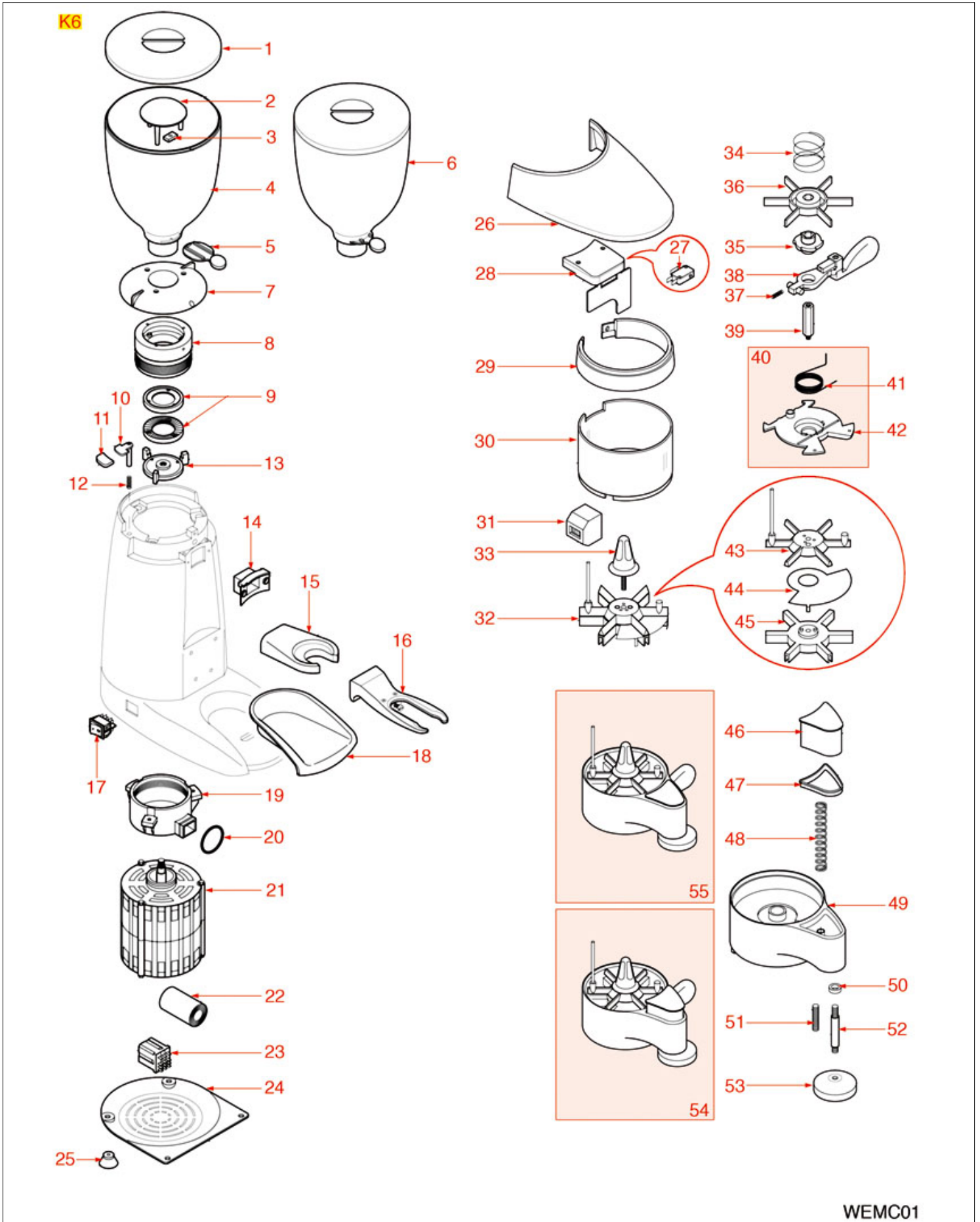
This catalogue is automatically generated.
Therefore, the sequence of the items might
not be always shown at best.
Updates will be issued in case of additions
and/or amendments.

Suitable universal spare parts may not be included





GRINDER ASSEMBLY K6





WEGA



Position	LF code no.	Description
1	1252366	COFFEE HOPPER LID
4	1080095	COFFEE HOPPER
5	1080096	COFFEE HOPPER CLOSING SHEET
9	1251093	GRINDING BURRS WEGA-COMPAK (PAIR) RIGHT
9	1251504	GRINDING BURRS PAIR COMPAK-WEGA RH
9	1251701	GRINDING BURRS PAIR COMPAK-WEGA RH
13	1251604	GRINDING BURRS BOTTOM HOLDER K-6
14	1186738	COFFEE OUTLET GASKET
15	1162016	FILTER HOLDER FORK
16	1090802	FILTER HOLDER FORK
17	3319294	BLACK BIPOLAR SWITCH 16A 250V
18	1260004	COFFEE COLLECTION TRAY
20	3186343	O-RING 02106 EPDM
23	3351007	POWER RELAY FINDER 55.32.8.230.0040
25	1313551	SUCTION FOOT
27	1240059	MICROSWITCH 21A 250V
28	1252102	FLAP WITH MICROSWITCH BOX
29	1002511	CHROMEPLATED DOSER RING
30	1090810	DOSER CYLINDER
31	1252458	COUNTER FOR COFFEE GRINDER
32	1343001	PLASTIC STAR ASSEMBLY
33	1350801	DOSER ADJUSTMENT KNOB
34	1250951	STAR SPRING
35	1225031	6-TEETH PAWL
37	1250207	LEVER PIN SPRING \varnothing 4.5x24 mm
38	1225034	METAL DOSER LEVER
42	1090803	DOSER BASE K6/K8
44	1343070	DIVIDING SHEET
48	1250195	COFFEE TAMPER SPRING \varnothing 15x85 mm
53	1439803	CAP LOWER \varnothing 57 mm



Suitable for:

WEGA



Suitable for:

Brushes

1384023 BRUSH FOR CLEANING 50 mm



WEGA

1384002 BRUSH FOR MAINTENANCE



WEGA

1384001 BRUSH FOR COFFEE SHOWER



WEGA WY15426

1384014 BRUSH FOR SHOWER RED



WEGA

Capacitors, electrical

3068016 CAPACITOR DUCATIENERGIA 10µF
450V 50/60Hz
operating temperature -25 + 85°C
lead connector 6.35x0.8 mm
ø 36xh58 mm



WEGA WY19050

3068080 CAPACITOR ELECTRICAL 10µF
450V 50/60Hz - ø 30xh71 mm



WEGA WY19050

3068014 CAPACITOR DUCATIENERGIA 8µF
450V 50/60Hz
operating temperature -25 + 85°C
lead connection 6.35x0.8 mm
ø 32xh55 mm



WEGA WY19062001

3068079 CAPACITOR ELECTRICAL 8µF
450V 50/60Hz - ø 30xh71 mm



WEGA WY19062001

Clamps

1168011 STAINLESS STEEL CLAMP FOR FLANGE PUMP



WEGA WY26310003



Coffee measuring spoons

1069001 PLASTIC MEASURING SPOON 20 ml

WEGA WY15290

1069002 STAINLESS STEEL MEASURING SPOON 20 ml

WEGA

Containers for coffee

1080094 COFFEE HOPPER

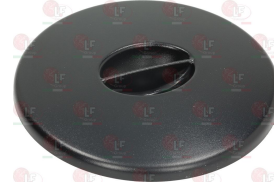
WEGA WY28357002

1080095 COFFEE HOPPER

WEGA WY28357

1080096 COFFEE HOPPER CLOSING SHEET

WEGA WY28326016

1252366 COFFEE HOPPER LID

WEGA WY28054002

1080506 COMPLETE COFFEE HOPPER

WEGA WY28357001

Counters

1252458 COUNTER FOR COFFEE GRINDER

WEGA WY28070005



Suitable for:

WEGA



Suitable for:

Dosers for coffee

1002511 CHROMEPLATED DOSER RING



WEGA WY28002012

1090507 CHROMIUM-PLATED COFFEE DOSER RH



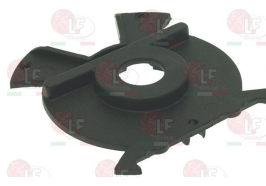
WEGA WY28102001

1439801 DISPENSER LID



WEGA WY28054008

1090803 DOSER BASE K6/K8



WEGA WY28360026

1090810 DOSER CYLINDER



WEGA WY28286001

1090029 DOSER LID



WEGA WY28054012

Feet

1313551 SUCTION FOOT



WEGA WY28360015

Forks for portafilter coffee grinder

1090802 FILTER HOLDER FORK



WEGA WY28126006

1162016 FILTER HOLDER FORK

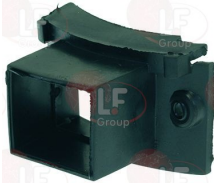


WEGA WY28126011



Gaskets and seals

1186738 COFFEE OUTLET GASKET



WEGA WY28022001

1252461 GASKET FOR COFFEE OUTLET OPENING



WEGA WX0008

1186954 RETAINING GASKET



WEGA

Grinders

1251138 GRINDING BURRS COMPAK (PAIR) RH
external \varnothing 58 mm - internal \varnothing 33 mm
thickness 8.5 mm - 3 mounting holes



WEGA WY28217014

1251140 GRINDING BURRS COMPAK (PAIR) RIGHT
external \varnothing 82.5 mm - internal \varnothing 49 mm
thickness 9.5 mm - 3 mounting holes



WEGA WY28217011

1251501 GRINDING BURRS PAIR COMPAK RH
external \varnothing 60 mm - internal \varnothing 36 mm
thickness 8 mm - 3 fixing holes



WEGA WY28217006

1251504 GRINDING BURRS PAIR COMPAK-WEGA RH
external \varnothing 63.5 mm - internal \varnothing 38 mm
thickness 9 mm - 3 mounting holes



WEGA WY28217000

1251701 GRINDING BURRS PAIR COMPAK-WEGA RH
GRIND BURRS "HEAVY DUTY" +70% longer life cycle
compared to a standard grinding burr
they do not deform
less contamination of ground coffee
external \varnothing 63 mm - internal \varnothing 38 mm
thickness 9 mm - 3 fixing holes



WEGA

1251092 GRINDING BURRS WEGA-COMPAK (PAIR) RIGHT
 \varnothing external 63 mm - \varnothing internal 38 mm
thickness 9 mm - 3 fixing holes



WEGA



Suitable for:

WEGA



Suitable for:

1251093 GRINDING BURRS WEGA-COMPAK (PAIR) RIGHT

ø external 80 mm - ø internal 41 mm
thickness 10 mm - 3 fixing holes



WEGA WY28217005

Grinding burr holders

1251604 GRINDING BURRS BOTTOM HOLDER K-6



WEGA WY28360009

Indicator lights

3221132 GREEN INDICATOR LAMP 230V

head ø 13.5 mm - hole ø 10 mm - 120°C
universal application



WEGA WY21011

Ironmongery (screws,nuts,washers)

1184012 CYLINDER HEAD SCREW M5x10

stainless steel - with hexagon socket
UNI 9327 - DIN 7984



WEGA WY23552

1348025 HEXAGONAL NUT M3

brass - UNI 5587 - ISO 4033



WEGA WY23050

1348813 HEXAGONAL NUT M4 MEDIUM

stainless steel - UNI 5588 - DIN 934 - ISO 4032



WEGA WY23030



Knobs

1350801 DOSER ADJUSTMENT KNOB



WEGA WY28286003

Levers

1225034 METAL DOSER LEVER



WEGA WY28196004

WEGA WY28196005

Microswitches, mechanical

1252102 FLAP WITH MICROSWITCH BOX complete with microswitch 21A 250V



WEGA WY28002007

1240016 MICROSWITCH HONEYWELL V5B010CB3E 16A 250V



WEGA WY18253

3240123 MICROSWITCH ROLD VRSRB1DA1 16A 250V



WEGA

1240059 MICROSWITCH 21A 250V



WEGA WY28165001

O-Ring and ORM gaskets

1186223 O-RING 02056 EPDM



WEGA WY12330

3186343 O-RING 02106 EPDM



WEGA WY28159305



Suitable for:

WEGA



Suitable for:

Pawls for coffee grinder dosers

1225031 6-TEETH PAWL



WEGA WY28159306

Relays

3351007 POWER RELAY FINDER 55.32.8.230.0040
230V 50/60Hz
2 exchange contacts 10A
with to test push-button + mechanic gauge



WEGA WY28286002

Rotary switches

1319001 SELECTOR SWITCH 0-1 POSITIONS 20A 690V
square pin 5x5 mm



WEGA WY18200

WEGA WY18211

WEGA W10734

Springs

1250195 COFFEE TAMPER SPRING \varnothing 15x85 mm



WEGA WY28360003

1250208 DOSER LEVER RETURN SPRING RIGHTHAND



WEGA WY28360027

1250207 LEVER PIN SPRING \varnothing 4.5x24 mm



WEGA WY28219012

1250951 STAR SPRING



WEGA WY28219008

Stars and spare parts

1343070 DIVIDING SHEET



WEGA WY2819001

1343001 PLASTIC STAR ASSEMBLY



WEGA WY28002015

Switches

3319016 BIPOLAR SWITCH RED 16A 250V
 16(4)A 250V - max. temperature 120°C
 with indicator lamp - silk screen printing 0 - I
 mounting hole 22x30 mm



WEGA WY18260

3319780 BLOCK CONNECTION WHITE 22x30 mm



3319779 BLOCK CONNECTIONS BLACK 22x30 mm



3319782 FRAME SAFETY 2 SIDES BLACK 22x30 mm



3319783 FRAME SAFETY 4 SIDES BLACK 22x30 mm



3319501 PUSH-BUTTON PROTECTION CAP
 external dimensions 29x36 mm
 for switches with mounting hole 22x30 mm



WEGA WY19049

1319005 BIPOLAR SWITCH 16A 250V



WEGA WY18371057

WEGA W05073



Suitable for:

WEGA



3319294 BLACK BIPOLAR SWITCH 16A 250V
16(4)A 250V - with red led indicator light
mounting hole 22x30 mm



WEGA WY28165003

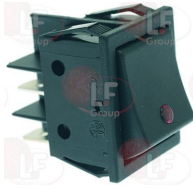
Suitable for:

3319501 PUSH-BUTTON PROTECTION CAP
external dimensions 29x36 mm
for switches with mounting hole 22x30 mm



WEGA WY19049

3319296 BLACK BIPOLAR SWITCH 16A 250V
with red led indicator light
max temperature 120°C
mounting hole 22x30 mm



WEGA WY18263

3319780 BLOCK CONNECTION WHITE 22x30 mm



3319779 BLOCK CONNECTIONS BLACK 22x30 mm



3319782 FRAME SAFETY 2 SIDES BLACK 22x30 mm



3319783 FRAME SAFETY 4 SIDES BLACK 22x30 mm



3319501 PUSH-BUTTON PROTECTION CAP
external dimensions 29x36 mm
for switches with mounting hole 22x30 mm



WEGA WY19049

3319501 PUSH-BUTTON PROTECTION CAP
external dimensions 29x36 mm
for switches with mounting hole 22x30 mm



WEGA WY19049

1319082 SINGLE-POLE PUSH BUTTON 16A 250V



WEGA WY18371058

WEGA W05072



Suitable for:

WEGA



Suitable for:

Tampers for coffee

1439803 CAP LOWER \varnothing 57 mm



WEGA WY28360021

Trays

1260004 COFFEE COLLECTION TRAY



WEGA WY28400010

The data herewith contained may change without notice and LF SpA cannot be held responsible for possible errors stated or resulting by the use of this document. All rights reserved. No part of this publication may be reproduced without written permission by LF SpA.



Distributing Components, Spare Parts & Accessories in original quality worldwide

-
- LF SpA HEADQUARTERS**
via Voltri, 80 - 47522 Cesena (FC) ITALY
Tel. +39 0547 34 11 11 - Fax +39 0547 34 11 10
www.lfircambi724.it - info@lfircambi.it
Export Dept. Tel. +39 0547 34 11 50 - Fax +39 0547 34 11 55
www.lfspareparts724.com - export@lfspareparts.com
- LF SpA HOUSEHOLD COMPONENTS DIVISION**
Via Padriciano, 99 - AREA Science Park - 34149 Trieste (TS) ITALY
Tel. +39 0547 34 12 42 - Fax +39 0547 34 12 48
www.lfspareparts724.com - info@lfspareparts.com
- EPGC Sas FRANCE**
13, Rue des Forts - 59960 Neuville en Ferrain
Tel. +33 (0)3 20 25 06 21 - Fax +33 (0)3 20 25 34 12
www.epgc.com - epgc@epgc.com
- LF GmbH GERMANY**
Junkersstrasse, 3 - D-82178 Puchheim - München
Tel. +49 89 89 45 78 66 - Fax +49 89 89 45 78 88
www.lfersatzteile724.de - info@lfersatzteile.de
- LF China REPUBLIC OF CHINA**
Room 403, No.2, Huadu Mansion, Lane 422, Huanghua Rd.
Minhang Dist. - 201103 Shanghai
Tel. +86 (0)21 33 53 66 31 - Fax +86 (0)21 33 53 66 32
www.lfspareparts724.com - china@lfspareparts.com
- OOO LF RUSSIAN FEDERATION**
Ul. Anatoliya Zhivova, 8 - office 1 - 123100 Moscow
Tel./Fax +7 495 725 26 53
www.lfspareparts724.ru - info@lfspareparts.ru
- LF Repuestos Horeca S.L.U. SPAIN**
Poligono Industrial Carpetania - C/Miguel Faraday, 8 - 28906 Getafe
Tel. +34 91 477 91 00 - Fax +34 91 477 90 81
www.lfrepuestos-horeca724.es - info@lfrepuestos.es
- LF Scandinavia Aps - LF Spareparts S.p.A. DENMARK**
Nupark, 51 - 7500 Holstebro
Tel. +45 70 70 77 33
www.lfspareparts724.dk - denmark@lfspareparts.dk
- LF SpA Cesena (IT) Swiss Branch Steinhausen SWITZERLAND**
Sennweidstrasse, 45 - CH-6312 Steinhausen
Tel. +41 (0)41 760 15 80/1 - Fax +41 (0)41 760 15 85
www.lfersatzteile724.ch - info@lfersatzteile.ch
- LF Spare Parts Ltd. UNITED KINGDOM**
A10a Lakeside Business Park, Broadway Lane
South Cerney, Gloucestershire GL7 5XL
Tel. +44 (0)1285 86 16 25 - Fax +44 (0)1285 86 39 49
www.lfspareparts724.co.uk - info@lfspareparts.co.uk
- LF Central Est Europe S.r.o. CZECH REPUBLIC**
Antala Staska 1859/34
14000 Praha 4 - KRC
Tel. +420 730 156 910
www.lfspareparts724.cz - info@lfspareparts.cz
- LF SPARE PARTS INC. USA**
Legal address:
155 Office Plaza Dr - Suite A - Tallahassee, FL 32301
Business/Mailing address:
1100 South Tower, 225 Peachtree St., N.E. - Atlanta, GA 30303, USA
Tel. +1-404-525-2600 - Fax +1-404-586-3528
www.lfspareparts724.us - info@lfspareparts.us
Tel. West Coast and Midwest: 206-349-1525 Sauro
Tel. East Coast and the Caribbean: 786-817-1764 Luis
-
- AUSTRALIA AND NEW ZEALAND**
www.lfspareparts724.com
andrea.calvio@lfspareparts.com
- AUSTRIA**
www.lfersatzteile724.at
info@lfersatzteile.at
- BALKAN COUNTRIES**
www.lfspareparts724.com
matija.ramov@lfspareparts.com
- BALTIC COUNTRIES**
www.lfspareparts724.com
inara.silina@lfspareparts.com
- LATIN AMERICA AND THE CARRIBEANS**
www.lfrepuestos-horeca724.es
export@lfrepuestos.es
- POLAND**
www.lfspareparts724.pl
info@lfspareparts.pl
- SOUTH KOREA**
www.lfspareparts724.com
fabio.doni@lfspareparts.com
- TURKEY**
www.lfyedekparca724.com
export@lfspareparts.com