



Spare parts for the professional sector: Coffee grinders



Suitable for:

SAECO



This catalogue is automatically generated.
Therefore, the sequence of the items might
not be always shown at best.
Updates will be issued in case of additions
and/or amendments.

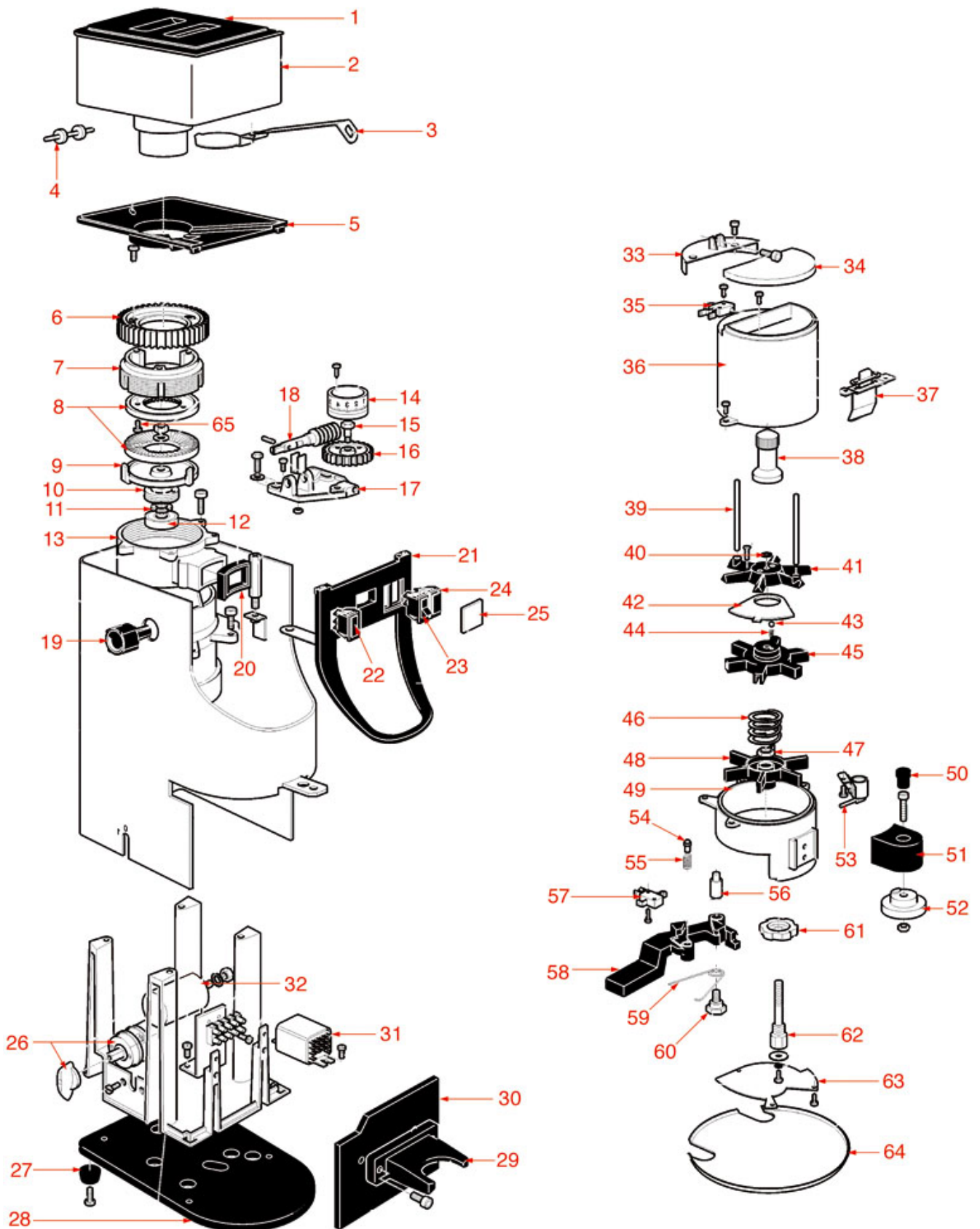
Suitable universal spare parts may not be included





GRINDER ASSEMBLY MS85

MS85



SOMC01

Positions without LF code no.: upon request



SAECO

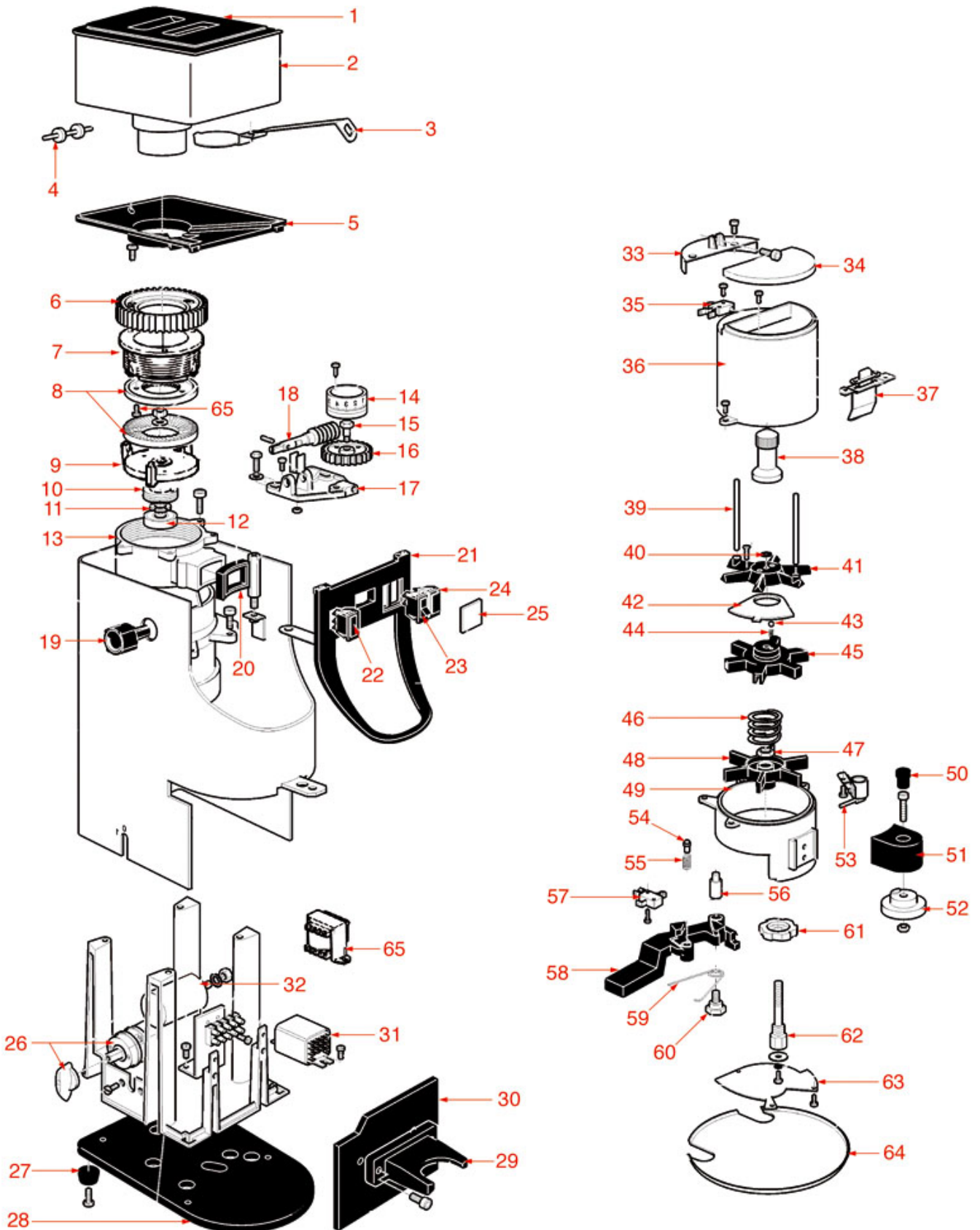


Position	LF code no.	Description
1	1080136	COFFEE HOPPER LID
8	1251007	GRINDING BURRS ARISTARCO-GAGGIA(PAIR) RH
26	1057027	SELECTOR SWITCH 0-1 POSITIONS 16A 400V
35	3240123	MICROSWITCH ROLD VRSRB1DA1
41	1343078	TOP STAR
42	1343077	PLATE SCRAP SEPARATOR
46	1250259	STAR SPRING
58	1225039	DISPENSER LEVER
59	1250258	DOSER LEVER RETURN SPRING
61	1225038	RATCHET 6 TEETH
65	1528001	COUNTERSUNK FLAT HEAD SCREWS M4x10



GRINDER ASSEMBLY MS64

MS64



SOMC02

Positions without LF code no.: upon request



SAECO



Position	LF code no.	Description
1	1080136	COFFEE HOPPER LID
35	3240123	MICROSWITCH ROLD VRSRB1DA1
41	1343078	TOP STAR
42	1343077	PLATE SCRAP SEPARATOR
46	1250259	STAR SPRING
58	1225039	DISPENSER LEVER
59	1250258	DOSER LEVER RETURN SPRING
61	1225038	RATCHET 6 TEETH
65	1528001	COUNTERSUNK FLAT HEAD SCREWS M4x10



Suitable for:

SAECO



Suitable for:

Brushes

1384023 BRUSH FOR CLEANING 50 mm



SAECO

1384001 BRUSH FOR COFFEE SHOWER



SAECO WGA5001033000

1384002 BRUSH FOR MAINTENANCE



SAECO

1384014 BRUSH FOR SHOWER RED



SAECO

1384009 CLEANING BRUSH

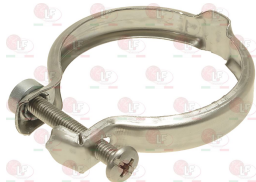


SAECO 127390100

SAECO 9991.068

Clamps

1168011 STAINLESS STEEL CLAMP FOR FLANGE PUMP



SAECO WGADM0307

Coffee measuring spoons

1069001 PLASTIC MEASURING SPOON 20 ml



SAECO WGADM1017

SAECO 146680659

SAECO 146680150

SAECO 146680159

1069002 STAINLESS STEEL MEASURING SPOON 20 ml

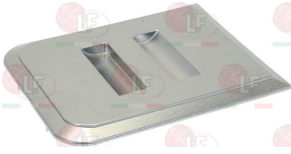


SAECO



Containers for coffee

1080136 COFFEE HOPPER LID
for Grinder-dispenser (SAECO) MS64 - MS85



SAECO WGAMDB0226/CL

Detergents

1092213 DETERGENT GRIND CLEANER 340 g
detergent for grinders cleaning
natural grain-based ingredients
100% biological
please see the attached documentation for use



SAECO

Grinders

1251146 CERAMIC GRINDING BURRS (PAIR) LEFT
external \varnothing 48 mm - internal \varnothing 28 mm
thickness 6.5 mm



SAECO 146520100

1251098 CONIC.GRIND.BURRS GAGGIA (PAIR) RH
external \varnothing 47.8/31.7 mm - internal \varnothing 28/10 mm
thickness 20 mm



SAECO 226473500
SAECO 9141.040

SAECO 226477700

SAECO 9141.039

1251199 CONICAL GRIND.BURRS PAIR SAECO/GAGGIA RH
 \varnothing external 47.8/31.7 mm - \varnothing internal 28/10 mm
thickness 20 mm



SAECO 226473500

SAECO 226477700

1251099 GRINDING BURRS (PAIR) LEFT
external \varnothing 43 mm - internal \varnothing 25 mm
thickness 6.5 mm - 3 fixing holes



SAECO 126520119



Suitable for:

Suitable for:

1251007 GRINDING BURRS ARISTARCO-GAGGIA(PAIR) RH
 external \varnothing 84 mm - internal \varnothing 45 mm
 thickness 9 mm - 3 mounting holes
 for Grinder-dispenser (SAECO) MS85

1251173 GRINDING BURRS PAIR GAGGIA RH
 external \varnothing 64 mm - internal \varnothing 37 mm
 thickness 8.5 mm - 3 fixing holes



SAECO WGAMDB0248

SAECO 9141.072

SAECO 9141.072_2PZ

Ironmongery (screws,nuts,washers)

1528001 COUNTERSUNK FLAT HEAD SCREWS M4x10
 slotted - stainless steel
 UNI 6109 - DIN 963 - ISO 2009

1528501 COUNTERSUNK HEAD SCREWS WITH SHELL M5x12
 cross recessed - stainless steel
 UNI 7689 - DIN 966 - ISO 7047



SAECO WGAUNI6107-4X10I

SAECO DI7987-5X8I

3528291 CROSS HEAD FLUSH SCREW M4x8
 cross-shaped - st./steel
 UNI 7688 - DIN 965 - ISO 7046

1528100 CYLINDER HEAD SCREW M4x12
 stainless steel - cross cut
 UNI 7687 - DIN 7985 - ISO 7045



SAECO 129620221

SAECO 129854021

SAECO U046.003

SAECO WGADI7986-4X10I

1528048 CYLINDER HEAD SCREW M5x8
 in zinc plated iron alloy - cross cut
 UNI 7687 - DIN 7985 - ISO 7045

1528622 HEXAGON HEAD SCREW M8x16
 stainless steel - UNI 5739 - DIN 933 - ISO 4017



SAECO U043.021

SAECO UN5931-8X16Z

SAECO WGADI6921-8X16Z

3528213 HEXAGONAL NUT MID M5
 st./steel - UNI 5588 - DIN 934 - ISO 4032

3060054 HEXAGONAL NUT M10 MEDIUM
 stainless steel - UNI 5588 - DIN 934 - 4032



SAECO U302.001

SAECO U302.006



Knobs

3241084 ELASTIC RING FOR KNOB



SAECO 120460100

Levers

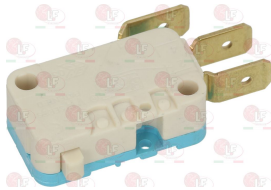
1225039 DISPENSER LEVER
for Grinder-dispenser (SAECO) MS64 - MS85



SAECO WGAMDB0346

Microswitches, mechanical

3240123 MICROSWITCH ROLD VRSRB1DA1
16A 250V



SAECO NE05.010

SAECO WGADM0754

3240406 MICROSWITCH SAIA-BURGESS
model XGK2-88-S20Z1
10(4)A 250V



SAECO NE05.052

O-Ring and ORM gaskets

1186421 O-RING 02018 EPDM



SAECO NM02.001

SAECO 140321461

1186352 O-RING 02050 EPDM



SAECO 140322261

3186343 O-RING 02106 EPDM



SAECO NM02.030



Suitable for:

SAECO



Suitable for:

Pawls for coffee grinder dosers

1225038 RATCHET 6 TEETH



SAECO WGAMDB0286

Rotary switches

1057027 SELECTOR SWITCH 0-1 POSITIONS 16A 400V
square pin 5x5 mm
for Grinder-dispenser (SAECO) MS85



SAECO DM0755/002

SAECO WGADM0755/001

Springs

1250258 DOSER LEVER RETURN SPRING



SAECO WGAMDB0292

1250259 STAR SPRING



SAECO WGAMDB0256

Stars and spare parts

1343077 PLATE SCRAP SEPARATOR



SAECO WGAMDB0240

1343078 TOP STAR
for Grinder-dispenser (SAECO) MD64 - MD85



SAECO WGAMDB0215

Switches

3319295 BIPOLAR SWITCH BLACK 16A 250V
16(4)A 250V - max. temperature 120°C
with indicator lamp with green led
mounting hole 22x30 mm



SAECO 186051800

3319780 BLOCK CONNECTION WHITE 22x30 mm





Suitable for:

3319779 BLOCK CONNECTIONS BLACK 22x30 mm



3319783 FRAME SAFETY 4 SIDES BLACK 22x30 mm



3319310 BIPOLAR SWITCH BLACK 16A 250V
silk-screen printing 0 - I
mounting hole 13x20 mm
faston 4.8 mm



SAECO 242212625104

SAECO

Suitable for:

3319782 FRAME SAFETY 2 SIDES BLACK 22x30 mm



3319501 PUSH-BUTTON PROTECTION CAP
external dimensions 29x36 mm
for switches with mounting hole 22x30 mm



3452004 SWITCH COVER
external dimensions 25x20 mm
for switch with mounting hole 20x13 mm



Tampers for coffee

1385002 NYLON COFFEE TAMPER ø 50/57 mm



SAECO WGA2PR/1



The data herewith contained may change without notice and LF SpA cannot be held responsible for possible errors stated or resulting by the use of this document. All rights reserved. No part of this publication may be reproduced without written permission by LF SpA.



Distributing Components, Spare Parts & Accessories in original quality worldwide

-
- LF SpA HEADQUARTERS**
via Voltri, 80 - 47522 Cesena (FC) ITALY
Tel. +39 0547 34 11 11 - Fax +39 0547 34 11 10
www.lfricambi724.it - info@lfricambi.it
Export Dept. Tel. +39 0547 34 11 50 - Fax +39 0547 34 11 55
www.lfspareparts724.com - export@lfspareparts.com
- LF SpA HOUSEHOLD COMPONENTS DIVISION**
Via Padriciano, 99 - AREA Science Park - 34149 Trieste (TS) ITALY
Tel. +39 0547 34 12 42 - Fax +39 0547 34 12 48
www.lfspareparts724.com - info@lfspareparts.com
- EPGC Sas FRANCE**
13, Rue des Forts - 59960 Neuville en Ferrain
Tel. +33 (0)3 20 25 06 21 - Fax +33 (0)3 20 25 34 12
www.epgc.com - epgc@epgc.com
- LF GmbH GERMANY**
Junkersstrasse, 3 - D-82178 Puchheim - München
Tel. +49 89 89 45 78 66 - Fax +49 89 89 45 78 88
www.lfersatzteile724.de - info@lfersatzteile.de
- LF China REPUBLIC OF CHINA**
Room 403, No.2, Huadu Mansion, Lane 422, Huanghua Rd.
Minhang Dist. - 201103 Shanghai
Tel. +86 (0)21 33 53 66 31 - Fax +86 (0)21 33 53 66 32
www.lfspareparts724.com - china@lfspareparts.com
- OOO LF RUSSIAN FEDERATION**
Ul. Anatoliya Zhivova, 8 - office 1 - 123100 Moscow
Tel./Fax +7 495 725 26 53
www.lfspareparts724.ru - info@lfspareparts.ru
- LF Repuestos Horeca S.L.U. SPAIN**
Poligono Industrial Carpetania - C/Miguel Faraday, 8 - 28906 Getafe
Tel. +34 91 477 91 00 - Fax +34 91 477 90 81
www.lfrepuestos-horeca724.es - info@lfrepuestos.es
- LF Scandinavia Aps - LF Spareparts S.p.A. DENMARK**
Nupark, 51 - 7500 Holstebro
Tel. +45 70 70 77 33
www.lfspareparts724.dk - denmark@lfspareparts.dk
- LF SpA Cesena (IT) Swiss Branch Steinhausen SWITZERLAND**
Sennweidstrasse, 45 - CH-6312 Steinhausen
Tel. +41 (0)41 760 15 80/1 - Fax +41 (0)41 760 15 85
www.lfersatzteile724.ch - info@lfersatzteile.ch
- LF Spare Parts Ltd. UNITED KINGDOM**
A10a Lakeside Business Park, Broadway Lane
South Cerney, Gloucestershire GL7 5XL
Tel. +44 (0)1285 86 16 25 - Fax +44 (0)1285 86 39 49
www.lfspareparts724.co.uk - info@lfspareparts.co.uk
- LF Central Est Europe S.r.o. CZECH REPUBLIC**
Antala Staska 1859/34
14000 Praha 4 - KRC
Tel. +420 730 156 910
www.lfspareparts724.cz - info@lfspareparts.cz
- LF SPARE PARTS INC. USA**
Legal address:
155 Office Plaza Dr - Suite A - Tallahassee, FL 32301
Business/Mailing address:
1100 South Tower, 225 Peachtree St., N.E. - Atlanta, GA 30303, USA
Tel. +1-404-525-2600 - Fax +1-404-586-3528
www.lfspareparts724.us - info@lfspareparts.us
Tel. West Coast and Midwest: 206-349-1525 Sauro
Tel. East Coast and the Caribbean: 786-817-1764 Luis
-
- AUSTRALIA AND NEW ZEALAND**
www.lfspareparts724.com
andrea.calvio@lfspareparts.com
- AUSTRIA**
www.lfersatzteile724.at
info@lfersatzteile.at
- BALKAN COUNTRIES**
www.lfspareparts724.com
matija.ramov@lfspareparts.com
- BALTIC COUNTRIES**
www.lfspareparts724.com
inara.silina@lfspareparts.com
- LATIN AMERICA AND THE CARRIBEANS**
www.lfrepuestos-horeca724.es
export@lfrepuestos.es
- POLAND**
www.lfspareparts724.pl
info@lfspareparts.pl
- SOUTH KOREA**
www.lfspareparts724.com
fabio.doni@lfspareparts.com
- TURKEY**
www.lfyedekparca724.com
export@lfspareparts.com