



Spare parts for:

Domestic



Suitable for:

GAGGIA



This catalogue is automatically generated.
Therefore, the sequence of the items might
not be always shown at best.

Updates will be issued in case of additions
and/or amendments.

*Suitable **universal spare parts** may not be included*





Suitable for:

GAGGIA



Suitable for:

Ball valves and accessories

3526699 BALL VALVE \varnothing 1/4" MF



GAGGIA WGA5001016000

Bodies

5014758 CHROME PLATED BASE



GAGGIA S32408545

1015007 UNDERBASE TRAY



GAGGIA S371110

Boiler safety valves

1523537 BOILER VALVE \varnothing 1/4" M
stainless steel - old model
or viton



GAGGIA WGADM2186

1523572 BOILER VALVE \varnothing 3/8" M - 1.8 bar CE/PED
calibration pressure 1.8 bar
steam outlet flow rate 77 Kg/h
viton seal
operating temperature $-20/+200^{\circ}\text{C}$
CE/PED certified valve
for GAGGIA GE-GD-XE-XD-E90-D90-LCD



GAGGIA WGADM1380/003

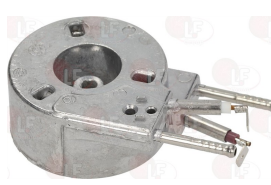
Boilers

5061025 BOILER SLIM 1100W 230V
hose end fitting \varnothing 5 mm
additional heating element 437W 230V



GAGGIA 11004667

5058557 BOILER SLIM 1300W 230V
hose end fitting \varnothing 5 mm



GAGGIA 11013735



GAGGIA



Suitable for:

5025969 BOILER 1100/437W 230V



GAGGIA 282058858

Suitable for:

5057057 BOILER 120/220/240V
with 2 heating elements 570/680W 110/120V



GAGGIA EF0030/02/A

5038339 BOILER 120/220/240V 570/680W



GAGGIA EF0030/A

1048031 BOILER 1300W 230V



GAGGIA 11011341

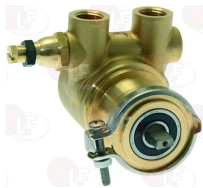
5008254 RING ø 95 mm FOR BOILER FIXING



GAGGIA S31104702

Booster pumps

1330001 ROTARY VANE PUMP ROTOFLOW ø 3/8" NPT
clamp connection
flowrate 100 L/h
equipped with balanced bypass
connection ø 3/8" conical NPT
N.S.F. approved



GAGGIA DM0217/002/PG

Brushes

1384001 BRUSH FOR COFFEE SHOWER



GAGGIA WGA5001033000

1384009 CLEANING BRUSH



GAGGIA 127390100

GAGGIA 9991.068



Suitable for:

GAGGIA



Suitable for:

Cable glands

5008195 SELF-LOCKING GROMMET



GAGGIA S436203

Castors, rollers and accessories

1346001 WHEEL ø 16 mm
for casing bottom



GAGGIA 11000223

Circlips

1348050 SEEGER RING J-20
stainless steel - external ø 21.5 mm
UNI 7437 - DIN 472



GAGGIA S404108

Clamps

3449406 DOUBLE-WIRE CLAMP 11-11.6 - 100 PCS
for hoses ø 11÷11.6 mm



GAGGIA NV99.087

3449404 DOUBLE-WIRE CLAMP 8.8-9.3 - 100 PCS
for hoses ø 8.8÷9.3 mm



GAGGIA 184320200

1449126 HOSE CLAMP ø 5.8-7.0 mm



GAGGIA NF11.052

5035467 HOSE CLAMP ø 7.8-9.5 mm



GAGGIA 12000892



Coffee filters

1160339 BLIND FILTER



GAGGIA WGANF08/006

1160013 FILTER 2-CUP
for machines with piston sleeve



GAGGIA S327053

1160262 FILTER 2-CUP 14 g



GAGGIA NF08/005

GAGGIA NF08/005/B

GAGGIA WGANF08/005/B

1160199 1 CUP FILTER



GAGGIA 124653221

1160113 1 CUP FILTER ø 60 mm
for machines with sheathed group



GAGGIA S327054

1160251 1 CUP FILTER 6 g



GAGGIA NF08/002

GAGGIA NF08/002/B

GAGGIA WGANF08/002/B

1160261 1 CUP FILTER 7 gr



GAGGIA NF08/004

GAGGIA NF08/004/B

GAGGIA WGANF08/004/B

1160200 2 CUPS FILTER



GAGGIA 124650221

Coffee groups

1192015 ARTICULATION BUSHING
for brew group



GAGGIA S3140453

1192077 BLACK COFFEE ASSEMBLY



GAGGIA 11005921



Suitable for:

GAGGIA



5500672 BLACK COFFEE GROUP



GAGGIA 11004183

Suitable for:

5052124 BREW GROUP



GAGGIA B0171

5064999 BREW GROUP 8 g



GAGGIA 11012810

GAGGIA 421944037611

**1090039 COFFEE DOSER OUTLET CONVEYOR ASSY
for coffee grinder**



GAGGIA 11012564

GAGGIA 11026355

5072594 COFFEE-CONTAINER FOR GROUP



GAGGIA 11003075

5063245 COUNTERPISTON FOR COFFEE GROUP 8 g



GAGGIA 11001840

5501139 DELIVERY GROUP CAP WITH JACKET



GAGGIA S371132

5060580 GROUP COFFEE 8 g 5 bar



GAGGIA 11012382

1192197 GROUP COFFEE 8 g 8 bar



GAGGIA 11009266

**5032977 GROUP CONTROL LEVER
overall length 230 mm - thread M12**



GAGGIA S3954004

5059828 HOPPER BLACK FOR COFFEE GROUP



GAGGIA 149261350

5029493 JACKET FOR COFFEE GROUP



GAGGIA S371133



GAGGIA



Suitable for:

Suitable for:

1192067 PIN FOR SHOWER

5063244 PIPE COUNTER-PISTON GROUP



GAGGIA 227470150

GAGGIA 11009276

1321002 PISTON FOR LEVER GROUP
for brew group

5501148 PISTON TIE ROD FOR GROUP
overall length 111 mm - threads M10



GAGGIA S314044

GAGGIA S312382

1528024 PUNCHED WASHER \varnothing 19.7x13x0.9 mm
for brew group

5067819 TUBING FOR WATER INLET BLACK



GAGGIA S313002

GAGGIA 20000440

1192911 VALVE REGULATOR

1192038 WATER INLET VALVE
for coffee group



GAGGIA 11005099

GAGGIA 9011.099

GAGGIA 11005060

Coffee measuring spoons

1069001 PLASTIC MEASURING SPOON 20 ml



GAGGIA WGADM1017

GAGGIA 146680159



Suitable for:

GAGGIA



Suitable for:

Contact thermostats

1443011 CONTACT THERMOSTAT 100°C M4
for coffee group



GAGGIA WGADM1561

1443400 CONTACT THERMOSTAT 107°C M4



GAGGIA DM1168

GAGGIA DM1168/K

1443007 CONTACT THERMOSTAT 127°C 16A 250V
with manual reset



GAGGIA S436040

1444521 CONTACT THERMOSTAT 155°C M4



GAGGIA DM1288

GAGGIA DM1288/K

1443040 CONTACT THERMOSTAT 175°C
with manual reset - for boiler



GAGGIA 189428200

1443036 CONTACT THERMOSTAT 95°C 10A 250V



GAGGIA 189422000

5500425 THERMOSTAT CONTACT 127°C



GAGGIA 189425100

1443083 THERMOSTAT CONTACT 175°C



GAGGIA 12001034

5071524 THERMOSTAT CONTACT 190°C



GAGGIA 12001033



Containers for coffee

1080173 COFFEE HOPPER



GAGGIA 222712979

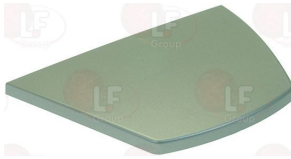
GAGGIA 8314007000

1080136 COFFEE HOPPER LID



GAGGIA MDB0226

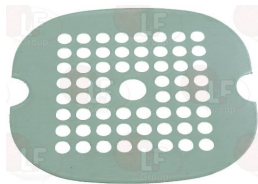
5049854 LID FOR COFFEE BEANS HOPPER



GAGGIA 222765137

Cup support grids

1185001 CHROME-PLATED STEEL CUP SUPPORT GRID



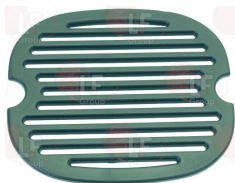
GAGGIA S324021

1015001 PLASTIC TRAY



GAGGIA S371104

1185002 PLASTIC CUP SUPPORT GRID



GAGGIA S371103

1015001 PLASTIC TRAY



GAGGIA S371104

Detergents

1092005 DETERGENT SAECO/GAGGIA IN TABLETS

blister pack 10 tablets 1.6 g
for the cleaning of small coffee groups
detergent for COFFEE MACHINES - SUPERAUTOMATIC MAC
please see the attached documentation for use



GAGGIA 21001685

3092251

SCALE REMOVER AXOR DE-CAF 10 BAGS

granular bags 30 g
removes scale residues from the hydraulic
system and coffee machines boilers house hold
type, it does not corrode nor leaves residues
f/COFFEE MACHINES SAECO-GAGGIA-LAVAZZA-PAVONI-SGL
MITACA-GRIMAC-RDL-SPINEL-DELONGHI-ETC.
please see the attached documentation for use



GAGGIA



Suitable for:

GAGGIA



3092250 SCALE REMOVER AXOR RIO 250 ml
 removes scale residues from the hydraulic system and coffee machines boilers household type. it does not corrode nor leaves residues for SAECO-GAGGIA-LAVAZZA-PAVONI-SGL TYPE MACHINES MITACA-GRIMAC-RDL-SPINEL-DELONGHI-ETC. please see the attached documentation for use



GAGGIA

Suitable for:

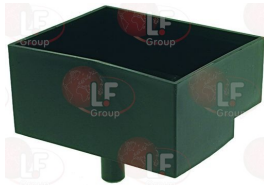
5069083 SCALE REMOVER GAGGIA 250 ml
 removes lime scale residues from the hydraulic system and boilers of household coffee machines, not corrosive, leaves no residues for MACHINES TYPE: GAGGIA-SAECO-LAVAZZA-PAVONI-SGL MITACA-GRIMAC-RDL-SPINEL-DELONGHI-ECC.. please see the attached documentation for use



GAGGIA 21001681

Drain tanks

1527537 DRAIN TRAY
 dimensions 100x80x48 mm



GAGGIA WGA4001097000

Drip trays for coffee and bar

1527029 SILVER DRIP TRAY
 max. dimensions 278x227 mm



GAGGIA 229631637

Electrical cables

5008206 ELECTR. CABLE POWER SUPPLY 16A 250V 2000
 with plug SCHUKO - 3 wires \varnothing 1.5 mm
 overall length 2000 mm



GAGGIA S332316

1050019 POWER CORD 16A 250V 2000 m m



GAGGIA 183911050



Electronic boxes

1054048 DOSER CONTROL BOX 2 GROUPS 230V



GAGGIA DM2181/02/230

GAGGIA DM2182/02/230

1054556 DOSER CONTROL BOX 2-3 GROUPS 230V



GAGGIA DM2123/02/230

GAGGIA DM2123/03/230

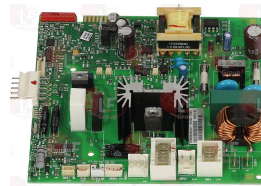
Electronic printed-circuit boards

1390031 LEVEL CONTROL CIRCUIT BOARD
dimensions 35x19 mm



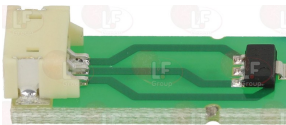
GAGGIA 11000651

5064998 PC BOARD CPU V2 230V
dimensions 135x140 mm



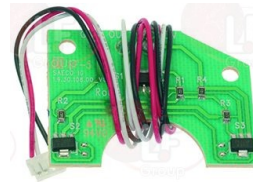
GAGGIA 11012593

7101458 PC BOARD SENSOR HAL 506 SF-K
dimensions 23x10 mm



GAGGIA 181540900

1390023 STEAM TAP CIRCUIT BOARD



GAGGIA 11007569

Feet

1313022 ADHESIVE FOOT 20x20 mm



GAGGIA 147623150

1313003 FOOT \varnothing 30 mm



GAGGIA S371101

Filter holder gaskets

5027216 FILTER HOLDER GASKET \varnothing 55 mm



GAGGIA 11025662

GAGGIA 145849762

1186998 FILTER HOLDER GASKET \varnothing 66x36x16 mm



GAGGIA 145841500



Suitable for:

GAGGIA



1186676 FILTER HOLDER GASKET \varnothing 72x56x8.5 mm
with external cuts



GAGGIA WGANG01/001/B

Suitable for:

1786216 GASKET FILTER HOLDER \varnothing 72x57x8.5 mm
ORIGINAL



GAGGIA NG01/001

1486006 GASKET FILTER HOLDER \varnothing 73.5x57x5 mm
ORIGINAL



GAGGIA GG0026/01

1486003 GASKET FILTER HOLDER \varnothing 79x56x6.5 mm
ORIGINAL



GAGGIA 11004543

Filter holders for coffee machines

1165109 COMPLETE FILTER HOLDER 1 CUP GAGGIA
spout connection \varnothing 3/8" - knob connection M10
wings 7 mm - without spring or filter



GAGGIA WGA8001059000

GAGGIA 8027085000

5047148 FILTER HOLDER ASSEMBLY 2 CUPS GAGGIA
spout connection \varnothing 3/8" - screw knob connection
fins 7 mm - with spring without filter
for GAGGIA
NEWBABY06-NEWBABY06CLASS-NEWBABY06DOSE
PAROS



GAGGIA 8301005010

GAGGIA 8332018000

5059488 FILTER HOLDER BEZZERA COFFEE MACHINES
spout connection \varnothing 3/8" - screw knob connection
fins 7 mm



GAGGIA 6301002000

1165027 FILTER HOLDER COMPLETE GAGGIA
spout connection \varnothing 3/8" - screw handle connection
wings 7 mm - with spring - without filter



GAGGIA DY0004/A

1165179 FILTER HOLDER COMPLETE PRESSURISED
2 cups - gray - aluminum



GAGGIA 11031389

1165180 FILTER HOLDER COMPLETE PRESSURISED
2 cups - black - aluminum



GAGGIA 11029573



Suitable for:

1165026 FILTER HOLDER GAGGIA/SAECO
spout connection \varnothing 3/8" - handle connection M10
wings 7 mm



GAGGIA WGA26G0104

GAGGIA



Suitable for:

5052121 JET SWIRL EMULSIFIER BLACK
for filterholder



GAGGIA 4301007000

1165018 2 CUPS FILTER HOLDER ASSEMBLY PAVONI/GA
spout connection \varnothing 3/8" - handle connection M12
countersunk fins 4 mm - with spring - without filter
for brew group



GAGGIA S395307

Filters

1160001 INLET PASS-THROUGH FILTER
inlet and outlet \varnothing 6 mm.
500 micron net



GAGGIA 144650300

1160026 WATER FILTER



GAGGIA 144650800

GAGGIA 224640200

Fittings

1349098 "T"-COUPLING BOILER STEAM OUTLET



GAGGIA 4332024000

1349014 BOILER FITTING \varnothing 1/2"M-1/2"M



GAGGIA WGA8001010000

1349102 FITTING \varnothing 1/4"M-1/4"M



GAGGIA NRC11.038

GAGGIA WGA26G0070/01

1349112 FITTING \varnothing 1/4"M-3/8"M



GAGGIA WGANRC11.037



Suitable for:

GAGGIA



1349103 FITTING \varnothing 3/8"M-3/8"M



GAGGIA NRC11/30

GAGGIA WGANRC11/001

Suitable for:

1349653 HOSE-END FITTING \varnothing 1/8"M \varnothing 6 NICKEL



GAGGIA

1349706 L-FITTING \varnothing 3/8"M-3/8"M NICKEL-PLATED



GAGGIA WGANRC10/024

1349710 NICHEL PLATED L-FITTING \varnothing 1/4"M-1/4"M



GAGGIA NRC30/007

GAGGIA WGANRC30/007

Floats

1201050 MAGNETIC LEVEL FLOAT



GAGGIA 9161.112.150

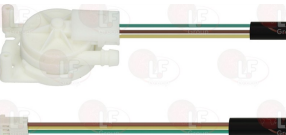
1201020 WATER LEVEL FLOAT



GAGGIA 145501211

Flowmeters

1411003 VOLUMETRIC FLOWMETER



GAGGIA 286473300

1455004 VOLUMETRIC FLOWMETER 974-9521-B NSF
inlet/outlet hose-end fitting \varnothing 6 mm
nozzle \varnothing 1.2 mm



GAGGIA NV99.099

5060440 VOLUMETRIC FLOWMETERS 932-9521-B90 NSF
hose end fitting inlet/outlet \varnothing 6 mm
nozzle \varnothing 1.2 mm



GAGGIA 12000781



Gaskets and seals

1186619 COPPER FLAT GASKET \varnothing 18x14x1.5 mm



GAGGIA

1186620 COPPER FLAT GASKET \varnothing 22x17x1.5 mm



GAGGIA UN1734-160

GAGGIA 49.90.91.32

1186468 EFLON FLAT GASKET \varnothing 17x12x1.5 mm



GAGGIA S362021

1186848 FLAT EPDM GASKET
external \varnothing 14/12 mm - internal \varnothing 7 mm
for water tank valve



GAGGIA 11003671

1186129 FLAT EPDM GASKET \varnothing 15/6x10 mm
external \varnothing 15/6 mm - total height 10 mm



GAGGIA

1186985 FLAT EPDM GASKET \varnothing 15x6x6 mm



GAGGIA WGAR0709

1186474 FLAT NBR GASKET \varnothing 12x7x5 mm
for water/steam tap



GAGGIA S361023

5062673 GASKET FLAT FELT \varnothing 45x39x4 mm
for coffee grinders



GAGGIA 140360500

1186201 GASKET FLAT PTFE \varnothing 21x16.8x2 mm



GAGGIA

1186983 GASKET FLAT VITON \varnothing 15x7x3 mm
for water inlet tap



GAGGIA WGA4001092000



GAGGIA



Suitable for:

5058031 GASKET LOWER FOR COFFEE CONTAINER



GAGGIA 145854462

Suitable for:

1786147 GASKET MUSHROOM / EPDM
for water/steam tap - \varnothing 5/3 mm height 5 mm



GAGGIA 11008104

1786231 GUARNIZIONE PIANA EPDM \varnothing 24x15x3 mm
for water inlet tap



GAGGIA WGA4001094000

1786230 PTFE CONICAL SEAL \varnothing 14.5x6.5x9 mm
for water/steam tap



GAGGIA RB0902

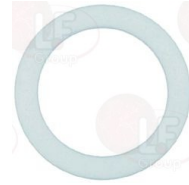
GAGGIA WGARB0902

1186404 PTFE FLAT GASKET \varnothing 18x13x2 mm



GAGGIA WGA4001077000

1186326 PTFE FLAT GASKET \varnothing 22x16x2 mm



GAGGIA 49.90.91.34

1786025 SEALING TAPERED PTFE \varnothing 10x3.5x6 mm
for water/steam tap



GAGGIA 4310023000

Gaskets for coffee group

1186980 COFFEE GROUP GASKET 73x61x1 mm
free of asbestos



GAGGIA WGA4001084000



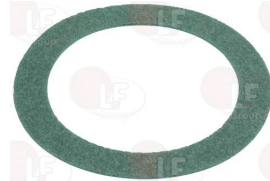
Gaskets for coffee machine boiler

1186843 BOILER GASKET
silicone
external \varnothing 7/6 mm - height 8 mm



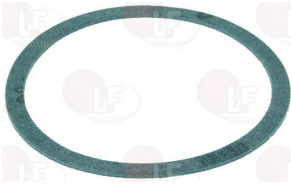
GAGGIA 149450588

5501123 BOILER GASKET \varnothing 108x80x2 mm
made of universal carbo



GAGGIA S362017

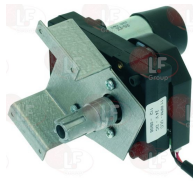
1186483 BOILER GASKET \varnothing 93x80x2 mm
universal carbo



GAGGIA S362019

Gearmotors

1240060 GEARMOTOR 24V SET PHASE
for coffee group



GAGGIA 20000521

Gears

1212024 GEAR \varnothing 52 mm 38 TOOTH
overall height 15 mm



GAGGIA 226000300

1212015 GEAR \varnothing 60/11 mm 90/12 TEETH
height 18 mm



GAGGIA 9121.042

1212012 GEAR \varnothing 82 mm 108 TEETH
overall height 67 mm
tooth height 5 mm



GAGGIA 9121.069.150

5033759 KIT GEARINGS FOR GEARMOTOR V2
gearing \varnothing 78 mm 77 teeth
overall height 68 mm
1 gear \varnothing 60/16 mm 90/13 teeth
overall height 17 mm



GAGGIA 20000900



Suitable for:

GAGGIA



Suitable for:

Grinders

1251146 CERAMIC GRINDING BURRS SAECO (PAIR) LEFT
external \varnothing 48 mm - internal \varnothing 28 mm
thickness 6.5 mm



GAGGIA 146520100

1251098 CONIC.GRIND.BURRS SAECO-GAGGIA (PAIR) RH
external \varnothing 47.8/31.7 mm - internal \varnothing 28/10 mm
thickness 20 mm



GAGGIA 226477700

1251007 GRINDING BURRS ARISTARCO-GAGGIA(PAIR) RH
external \varnothing 84 mm - internal \varnothing 45 mm
thickness 9 mm - 3 mounting holes



GAGGIA MDB0248

1251173 GRINDING BURRS PAIR SAECO/GAGGIA RH
external \varnothing 64 mm - internal \varnothing 37 mm
thickness 8.5 mm - 3 fixing holes



GAGGIA 9141.072

Grinding burr holders

1251152 GRINDING BURRS BOTTOM HOLDER
external \varnothing 56 mm - central hope \varnothing 4 mm



GAGGIA 149198350

Grounds boxes

5048171 CONTAINER FOR COFFEE PUCK BLACK



GAGGIA 11003533

Handles for filterholder-portafilter

5047149 FILTER HOLDER KNOB



GAGGIA RE0002

GAGGIA 4332037000

5059486 FILTER HOLDER KNOB



GAGGIA DY0006

GAGGIA DY0007



Suitable for:

1241055 FILTER HOLDER KNOB M12



GAGGIA S371125

Suitable for:

5047150 FILTER HOLDER KNOB CAP



GAGGIA RE0015

GAGGIA 4332038000

1141005 FILTER HOLDER KNOB M10



GAGGIA WGA8001061000

Heating elements

1755826 CARTRIDGE HEATING ELEMENT 80W 240V
cartridge \varnothing 12x55 mm



GAGGIA DM1804/001

GAGGIA WGADM2125/01

1755166 HEATING ELEMENT 1000W 110V
immersed length 46 mm - 2 poles
flange \varnothing 84 mm



GAGGIA S331334

1755130 HEATING ELEMENT 1000W 230V
hydraulic circuit connections M8



GAGGIA 288140458

1755264 HEATING ELEMENT 1500W 230V
immersed depth 125 mm - 2 poles
distance between fixing holes 52 mm
with bulb sheath - flange 68x68 mm
for GAGGIA TS-GEONE-GDONE



GAGGIA ES9190.297.00A

GAGGIA 9190.297.00A

1186798 O-RING 0146 VITON



GAGGIA WGADM0041/093



Suitable for:

GAGGIA



1755008 HEATING ELEMENT 2500W 220/380V
 immersed length 220 mm - 6 pole
 distance between fixing holes 51 mm
 with bulbholder sheathing - flange 68x68 mm



GAGGIA DM1615/220-240

GAGGIA ES9190.271.00A

GAGGIA 11007056

1186635 TRIANGULAR GASKET FOR HEATING ELEMENT
 universal carbo
 dimensions 70x70x2 mm - internal hole \varnothing 40 mm



GAGGIA 4027001000

Suitable for:

1186584 TRIANGULAR GASKET FOR HEATING ELEMENT
 free of asbestos
 dimensions 70x70x2 mm - internal hole \varnothing 40 mm



GAGGIA 4027001000

1786006 TRIANGULAR GASKET FOR HEATING ELEMENT
 PTFE
 dimensions 70x70x2 mm - internal hole \varnothing 40 mm



GAGGIA 4027001000

1755056 HEATING ELEMENT 4000/4760W 220/240V
 immersed length 310 mm - 6 poles
 distance between the holes 52 mm
 with bulb sheath - flangia \varnothing 67/58 mm



GAGGIA 11003362

1186635 TRIANGULAR GASKET FOR HEATING ELEMENT
 universal carbo
 dimensions 70x70x2 mm - internal hole \varnothing 40 mm



GAGGIA 4027001000

1186584 TRIANGULAR GASKET FOR HEATING ELEMENT
 free of asbestos
 dimensions 70x70x2 mm - internal hole \varnothing 40 mm



GAGGIA 4027001000

1786006 TRIANGULAR GASKET FOR HEATING ELEMENT
 PTFE
 dimensions 70x70x2 mm - internal hole \varnothing 40 mm



GAGGIA 4027001000

1755267 HEATING ELEMENT 4760W 240V
 immersed length 315 mm - 6 poles
 distance between mounting holes 53 mm
 with bulb sheath - flange 68x68 mm
 for GAGGIA DECO



GAGGIA 11012517

GAGGIA 4027004002

1186584 TRIANGULAR GASKET FOR HEATING ELEMENT
 free of asbestos
 dimensions 70x70x2 mm - internal hole \varnothing 40 mm



GAGGIA 4027001000



Suitable for:

1186635 TRIANGULAR GASKET FOR HEATING ELEMENT
universal carbo
dimensions 70x70x2 mm - internal hole \varnothing 40 mm



GAGGIA 4027001000

GAGGIA



Suitable for:

1786006 TRIANGULAR GASKET FOR HEATING ELEMENT
PTFE
dimensions 70x70x2 mm - internal hole \varnothing 40 mm



GAGGIA 4027001000

1755275 HEATING ELEMENT 5000W 240V
immersed length 345 mm - 6 poles
distance between fixing holes 43 mm
flange \varnothing 75/60 mm
for 2-groups coffee machines



GAGGIA ES9190.261.00A

1755270 HEATING ELEMENT 5465W 230V
immersed length 400 mm - 6 poles
distance between mounting holes 52 mm
with bulb sheath - flange 68x68 mm
for GAGGIA GE-GD-XE-XD



GAGGIA 11003363

1186635 TRIANGULAR GASKET FOR HEATING ELEMENT
universal carbo
dimensions 70x70x2 mm - internal hole \varnothing 40 mm



GAGGIA 4027001000

1186584 TRIANGULAR GASKET FOR HEATING ELEMENT
free of asbestos
dimensions 70x70x2 mm - internal hole \varnothing 40 mm



GAGGIA 4027001000

1786006 TRIANGULAR GASKET FOR HEATING ELEMENT
PTFE
dimensions 70x70x2 mm - internal hole \varnothing 40 mm



GAGGIA 4027001000

1755298 HEATING ELEMENT 900W 230V
immersed depth 50 mm - 2-pole
 \varnothing 52 mm - connections M12



GAGGIA 11024000

1755050 HEATING ELEMENT 920/1000W 230/240V
immersed length 46 mm - 2 poles
flange \varnothing 84 mm



GAGGIA S331335



Suitable for:

GAGGIA



Suitable for:

Hose-end fittings

1315008 T-SHAPED HOSE END FITTING \varnothing 8 mm



GAGGIA 147920300

Hydraulic piping

1449502 PTFE PIPE \varnothing 4x6 mm - 10 m
alimentary



GAGGIA B0195

GAGGIA CF0102

GAGGIA DY0022

1449679 SILICONE HOSE \varnothing 3,5x6 SHORE 60 - 10 mt
alimentary



GAGGIA 9972.206

1449279 SILICONE HOSE \varnothing 3,5x6 SHORE 60 - 100 m
alimentary



GAGGIA 9972.206

1449683 SILICONE HOSE \varnothing 5x10 SHORE 60 - 10 m
alimentary



GAGGIA B0159

GAGGIA DM2106/010

GAGGIA DY0034

GAGGIA WGADM2106/003

GAGGIA WGADM2106/007

GAGGIA WGADM2106/013

GAGGIA 149361400

GAGGIA DM2106/007

GAGGIA DM2106/014

GAGGIA JS01.022

GAGGIA WGADM2106/005

GAGGIA WGADM2106/010

GAGGIA WGADM2106/014

GAGGIA 16000440

GAGGIA DM2106/009

GAGGIA DM2106/03

GAGGIA WGADM2106/001

GAGGIA WGADM2106/006

GAGGIA WGADM2106/011

GAGGIA WGADM2106/015

1449283 SILICONE HOSE \varnothing 5x10 SHORE 60 - 100 m
alimentary



GAGGIA B0159

GAGGIA DM2106/010

GAGGIA DY0034

GAGGIA WGADM2106/003

GAGGIA WGADM2106/007

GAGGIA WGADM2106/013

GAGGIA 149361400

GAGGIA DM2106/007

GAGGIA DM2106/014

GAGGIA JS01.022

GAGGIA WGADM2106/005

GAGGIA WGADM2106/010

GAGGIA WGADM2106/014

GAGGIA 16000440

GAGGIA DM2106/009

GAGGIA DM2106/03

GAGGIA WGADM2106/001

GAGGIA WGADM2106/006

GAGGIA WGADM2106/011

GAGGIA WGADM2106/015

1449682 SILICONE HOSE \varnothing 5x8 SHORE 60 - 10 m
alimentary



GAGGIA B0157

GAGGIA 149360200

Suitable for:

1449282 SILICONE HOSE \varnothing 5x8 SHORE 60 - 100 m
alimentary



GAGGIA 149360200

Suitable for:

1449510 WIRE HOSE \varnothing 8.2x4.2 mm SH60 - 5 m



GAGGIA 16000380

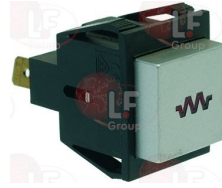
Indicator lights

1221079 INDICATOR LAMP GREEN 230V
head \varnothing 11.7 mm - hole \varnothing 9 mm



GAGGIA 11026889

1221038 INDICATOR LIGHT 24V
silk-screen printing "power"
mounting hole 22x27 mm



GAGGIA 5301003000

3221284 RED INDICATOR LAMP 250V
head \varnothing 10 mm - hole \varnothing 9 mm - 85°C



GAGGIA 5008005000

3221407 RED INDICATOR LAMP 250V
max temperature 120°C
mounting hole \varnothing 25 mm



GAGGIA WGA5001012000

1221023 RED INDICATOR LIGHT \varnothing 8 mm
flush mounting with fastening plate



GAGGIA WGA5001010000

Inlet hoses

5025958 HOSE FLEX \varnothing 1/4" Fc x Fc 500 mm



GAGGIA WGADM1608



Suitable for:

GAGGIA



Suitable for:

Ironmongery (screws,nuts,washers)

1528029 BRASS WASHER FLAT \varnothing 12x7x1 mm



GAGGIA S313001

1528025 BRASS WASHER FLAT \varnothing 17x12x1 mm



GAGGIA S313003

1528001 COUNTERSUNK FLAT HEAD SCREWS M4x10
slotted - stainless steel
UNI 6109 - DIN 963 - ISO 2009



GAGGIA UNI6107-4X10I

1528501 COUNTERSUNK HEAD SCREWS WITH SHELL M5x12
cross recessed - stainless steel
UNI 7689 - DIN 966 - ISO 7047



GAGGIA D17987-5X8I

1455034 CYLINDER HEAD SCREW M4x10
stainless steel - with hexagon socket
UNI 5931 - DIN 912 - ISO 4762



GAGGIA

5055105 CYLINDER HEAD SCREW M4x10
stainless steel - cross recessed
UNI 7687 - DIN 7985 - ISO 7045



GAGGIA WGADI7986-4X10Z

1528100 CYLINDER HEAD SCREW M4x12
stainless steel - cross cut
UNI 7687 - DIN 7985 - ISO 7045



GAGGIA WGADI7986-4X10I

5017690 CYLINDER HEAD SCREW M4x16
stainless steel - cross recessed
UNI 7687 - DIN 7985 - ISO 7045



GAGGIA U043.004

5020972 CYLINDER HEAD SCREW M4x25
stainless steel - cross recessed
UNI 7687 - DIN 7985 - ISO 7045



GAGGIA 129825502

1184012 CYLINDER HEAD SCREW M5x10
stainless steel - with hexagon socket
UNI 9327 - DIN 7984



GAGGIA S403210

GAGGIA UN5931-5X12I

GAGGIA UN5931-5X12IF

GAGGIA UN5931-5X12Z

9528022 CYLINDER HEAD SCREW M6x12
 stainless steel - with hexagon socket
 UNI 5931 - DIN 912 - ISO 4762
 ø head 10 mm - overall length 18 mm



GAGGIA UN5931-6X12I

Suitable for:

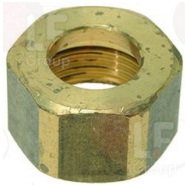
1528084 CYLINDER HEAD SCREW M8x25
 stainless steel - with hexagon socket
 UNI 5931 - DIN 912 - ISO 4762



GAGGIA UN5931-8X25I

GAGGIA WGAUN5931-8X25I

1528136 GLASS FASTENING NUT ø 1/2" F HOLE 13 mm
 nut height 14 mm - nut 23 mm



GAGGIA WGA4001075000

1528622 HEXAGON HEAD SCREW M8x16
 stainless steel - UNI 5739 - DIN 933 - ISO 4017



GAGGIA UN5931-8X16Z

GAGGIA WGAD16921-8X16Z

1184006 LOW CYLINDER HEAD SCREW M4x12
 stainless steel - with hexagon socket
 UNI 9327 - DIN 7984



GAGGIA WGAUN5931-4X12I

1184010 LOW CYLINDER HEAD SCREW M6x10
 stainless steel - with hexagon socket
 UNI 9327 - DIN 7984



GAGGIA WGAUN5931-6X10I

1348036 NUT ø 3/8" WRENCH 21x6mm



GAGGIA WGAND01/005

GAGGIA 00.90.91.12

1528027 NUT M12 FOR STEAM TAP



GAGGIA S313525

5037451 SCREW WITH CYLINDER HEAD M6x18
 stainless steel - with hexagon socket
 UNI 5931 - DIN 912 - ISO 4762



GAGGIA UN5931-6X16Z

1348814 TOOTHED WASHER EXT. M4
 internal/external ø 4.3/8 mm - thickness 0.5 mm
 stainless steel - UNI 8842 A - DIN 6798 A



GAGGIA S401005



Suitable for:

GAGGIA



1186399 WASHER FLAT M16
internal/external \varnothing 17/30 mm - thickness 3 mm
in zinc plated iron alloy
UNI 6592 - DIN 125 A - ISO 7089



GAGGIA WGAUN6592-17Z

Suitable for:

1528008 WASHER FLAT M8
internal/external \varnothing 8.4/16 mm - thickness 1.6 mm
in zinc plated iron alloy
UNI 6592 - DIN 125 A - ISO 7089



GAGGIA WGAUN6592-8Z

Knobs

5049137 KNOB GRINDING SETTING



GAGGIA 11003785

1241417 STEAM SILK SCREEN PRINT. F. HANDLE



GAGGIA WGADM0794/003

GAGGIA 1034.104

1241159 STEAM TAP KNOB
hole for D0-shaped pin \varnothing 8x6.5 mm



GAGGIA RE0012

5038341 STEAM TAP KNOB
D-shaped pin hole 6x4.6 mm



GAGGIA CF0189/A

5027276 WATER/STEAM TAP KNOB
hole for square pin 7x7 mm

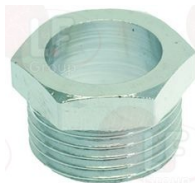


GAGGIA WGA8001028000

GAGGIA 1034.147.050

Level gauges

1349070 FITTING \varnothing 3/8" M HOLE \varnothing 12 mm
for level glass



GAGGIA LV0505

5025546 LEVEL GLASS \varnothing 11x160 mm



GAGGIA



GAGGIA

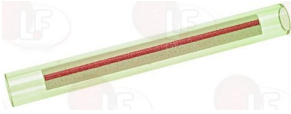


Suitable for:

1520400 LEVEL GLASS ø 12x106 mm SILK-SCREEN PRIN

Suitable for:

1520007 LEVEL GLASS ø 9x132 mm



GAGGIA WGA4001060000

GAGGIA S453101

1201016 LEVEL PLATE
dimensions 162x26 mm



GAGGIA S371134

Level regulators

1341042 LEVEL ADJUSTER RL30/1E/2C/F 230V
230/240V 50/60Hz 5A



GAGGIA WGADM1940

Level sensors

1341016 LEVEL PROBE ø 1/4" M-123 mm



GAGGIA WGADM1935

Levers

1225039 DISPENSER LEVER



GAGGIA MDB0346



Suitable for:

GAGGIA



Suitable for:

Lip seals

1186470 LIP SEAL \varnothing 21x11x4.5 mm



GAGGIA S361006

1186700 LIP SEAL \varnothing 23x15x6 mm



GAGGIA NM05.013

GAGGIA 145842900

1186467 LIP SEAL \varnothing 44x36x5.5 mm



GAGGIA S361005

Lubricants

1180002 GREASE LUBRICANT 5 g
for superautomatic coffee machines
NSF CERTIFIED



GAGGIA 11005044

GAGGIA 11022867

GAGGIA 421946017941

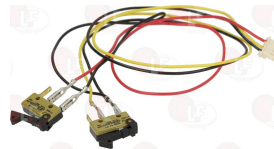
Microswitches

1240195 MAGNETIC MICROSWITCH



GAGGIA 0301.811

1240387 MICROSWITCH 0.3(0.1)A 30V
for gear



GAGGIA 11008868

1240209 MICROSWITCH 0.3A 30V



GAGGIA NE05.017

1240401 MICROSWITCH 0.3A 30V



GAGGIA NE05.038

Suitable for:

Suitable for:

3240123 MICROSWITCH 16A 250V



GAGGIA DM0754

GAGGIA 4931C00061019

Motors

1240211 COFFEE GRINDER MOTOR 230VDC



GAGGIA 286851858

GAGGIA 9141.075.00A

5030350 COFFEE GRINDER MOTOR 230VDC



GAGGIA 11000513

7102191 GEARMOTOR FOR BREW GROUP



GAGGIA 11003037

GAGGIA 11005214

1240368 RPM CLAMP MOTOR 165W
 model 11062503
 power 165W 230V 1.3A 50/60Hz
 capacitor 8 μ f
 with volumetric pump



GAGGIA WGA5001017000

GAGGIA 12000843

Non-return and expansion valves

1720003 CHECK VALVE
 for water inlet tap



GAGGIA WGA8001072000

1523068 CHECK VALVE \varnothing 1/8" M-1/8" M
 conical fitting



GAGGIA WGA5001015000

1523052 EXPANSION VALVE \varnothing 1/4" M 16 bar
 for boiler vibratory pump



GAGGIA 229452100

1523432 EXPANSION VALVE \varnothing 1/8" M 11 Bar



GAGGIA WGA5001014000



Suitable for:

Suitable for:

1523035 NON-RETURN VALVE \varnothing 1/4"M-1/4"F



GAGGIA WGADM1232/001

Nozzles for coffee groups

5048106 GROUP DIFFUSER M13x1.5



GAGGIA EF0047/A

OR and ORM gaskets

1186365 "O" RING 02012 EPDM



GAGGIA 12001614

1186480 EPDM O RING 04112



GAGGIA S465204

1186867 GASKET O-RING 0060-20 SILICONE RED
for steam pipe DELONGHI machines
for water-inlet valve SAECO/GAGGIA



GAGGIA 140324459

1786028 GASKET O-RING 0120-20 EPDM
for water/steam tap



GAGGIA 12000893

1186854 O-RING EPDM R5



GAGGIA NM02.006

1186647 O-RING M 0090-20 RED SILICONE



GAGGIA NM01.035

1186996 O-RING R3 EPDM



GAGGIA 140328561

1186864 O-RING 0106 RED SILICONE



GAGGIA NM01.028

Suitable for:

1186709 O-RING 0115 VITON



GAGGIA DM0041/106

GAGGIA WGADM0041/106

Suitable for:

**3186454 O-RING 0167 EPDM
per caldaia**



GAGGIA DM0041/082

1786298 O-RING 0167 RED SILICONE



GAGGIA 12001021

1186641 O-RING 0176 EPDM



GAGGIA S465225

1186858 O-RING 0176 RED SILICONE



GAGGIA 140322962

1186014 O-RING 02015 EPDM



GAGGIA NM02.028

1186514 O-RING 02015 SILICON



GAGGIA 140328059

GAGGIA 49.90.91.27

GAGGIA 49909127

1186900 O-RING 02015 VITON



GAGGIA WGADM0041/032

1186755 O-RING 02018 VITON



GAGGIA WGADM0041/031

5008673 O-RING 02043 SILICONE



GAGGIA 140323062

1186366 O-RING 02050 RED SILICONE



GAGGIA NM01.021

1786232 O-RING 02062 BROWN VITON



GAGGIA DM0041/107

GAGGIA WGADM0041/107



Suitable for:

1186026 O-RING 03081 RED SILICONE



GAGGIA

5008675 ORM GASKET 0060-30 BLACK SILICONE



GAGGIA 140324362

1186862 ORM GASKET 0320-40 SILICONE
for coffee group piston



GAGGIA NM01.044

1186852 RED SILICONE O-RING ORM 0080-20



GAGGIA 140320459

GAGGIA



Suitable for:

1186905 O-RING 04150 RED SILICONE
for coffee group



GAGGIA

1786111 ORM GASKET 0080-20 TERMOIL



GAGGIA 140320461

1786074 ORM 0090-25 EPDM



GAGGIA NM02.018

1786087 O-RING 02037 RED SILICONE



GAGGIA 140322162

Pawls for coffee grinder dosers

1225038 RATCHET 6 TEETH



GAGGIA MDB0286



Pins

1324092 FORK PIN



GAGGIA S3140463

1324131 INCREMENT PIN
for coffee grinder



GAGGIA 147470763

1324125 LEVER GUIDE PIN



GAGGIA MDB0291

1324159 PIN \varnothing 5x20.5 mm
for water inlet tap lever



GAGGIA WGARB0844

5069081 PIN FOR ADJUSTER



GAGGIA 11013531

1324902 PIN FOR VALVE



GAGGIA 9011.100

1324911 PISTON ASSEMBLY
for boiler valve
for steam tap



GAGGIA 11009019

5014767 PISTON ASSEMBLY
for steam tap



GAGGIA 11009018

5027689 STEAM TAP PIN



GAGGIA S3113034

1324089 STEAM TAP SPINDLE



GAGGIA WGARB0610/02

5038097 TAP SHUTTER CONTROL PIN



GAGGIA WGARB0711

1324400 TAP SPINDLE



GAGGIA WGARB0866/A



Suitable for:

Suitable for:

1324901 VALVE PIN

1324158 WATER/STEAM TAP PIN



GAGGIA 11009013

GAGGIA WGARB0710

Pipes for coffee machines

1449122 PRESSURE SWITCH PIPE

5027687 SUCTION PIPE

fitting \varnothing 8 mm - immersed depth 115 mm



GAGGIA S3421128

GAGGIA S326002

Pressure gauges

1245801 BOILER-PUMP PRESSURE GAUGE \varnothing 63 mm

double scale 0÷2.5/0÷16 bar - connections \varnothing 1/8" M
rim \varnothing 70 mm - body \varnothing 63 mm

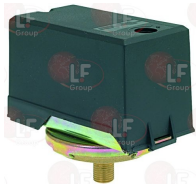


GAGGIA WGA5001018000

Pressure switches

1320541 PRESSURE SWITCH PARKER

CEI-UL approved
connection \varnothing 1/4"
scale 0.5÷1.4 bar
differential 0.18÷0.03 bar
maximum pressure 2.1 bar
maximum temperature 140°C



GAGGIA DM0541/P

1320531 PRESSURE SWITCH P302/6 3-POLES 30A

CE-SEV-ASE-UL approved
ISO 228 G connection 1/4" M for pipe \varnothing 4x6 mm
adjustable scale 0.5÷1.4 bar
fixed differential 0.15 (\pm 0.06) bar
fluid temperature max : 140°C
max contact load : 220V 7KW (30A)
400V 12KW (30A)



GAGGIA DM0541

GAGGIA WGADM0541

GAGGIA 12001274

Suitable for:

Suitable for:

1320002 PRESSURE SWITCH 0.5-1.2 BAR 1/4"
connection \varnothing 1/4" M - 16A 250V



GAGGIA S451308

Probes

1397003 BOILER TEMPERATURE PROBE



GAGGIA 288582200

5036417 PROBE TEMPERATURE NTC BOILER
bulb \varnothing 4x10 mm



GAGGIA 190800100

Rotary switches

1057027 SELECTOR SWITCH 0-1 POSITIONS 16A 400V
square pin 5x5 mm



GAGGIA DM0755/001

3057296 SELECTOR SWITCH 0-3 POSITIONS 32A 690V
square pin 5x5 mm



GAGGIA DM0781

GAGGIA WGADM1944

Seals for level glasses

1186226 FLAT EPDM GASKET
for level glass
external \varnothing 17.2/13 mm - internal \varnothing 11 mm
height 9/4 mm



GAGGIA WGA4001076000

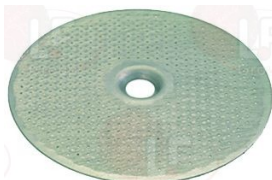
1186469 FLAT SILICONE GASKET \varnothing 15x9x5 mm
for level glass



GAGGIA S362020

Shower screens for brew group

1081022 SHOWER \varnothing 51.5 mm



GAGGIA

1081020 SHOWER \varnothing 54 mm
for sheathed groups



GAGGIA S327115



Suitable for:

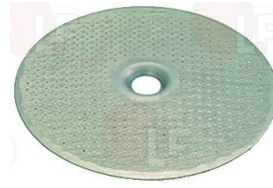
1081058 SHOWER SCREEN \varnothing 49 mm



GAGGIA 123741421

Suitable for:

1081063 SHOWER SCREEN \varnothing 54.5 mm



GAGGIA DM0704

1081021 SHOWER SCREEN \varnothing 55 mm



GAGGIA WGADM0269

Showerholder diffusers

1086509 SHOWER HOLDER DIFFUSER
external \varnothing 57 mm - height 14 mm - hole M5



GAGGIA WGA16G1002

GAGGIA 16G1002

5047151 SHOWER HOLDER SPRAYER
external \varnothing 58 mm - height 14.5 mm - hole M5



GAGGIA DY0036/A

Solenoid valves

5061494 COIL FOR DRAIN SOLENOID VALVE 230V



GAGGIA 20000590

5032429 CONNECTOR FOR DRAIN VALVE



GAGGIA 20000592

5032428 HOUSING FOR DRAIN SOLENOID VALVE P0049



GAGGIA 20000591



Suitable for:

1120354 2-WAY SOLENOID VALVE PARKER 230V 50/60Hz
 VE146NV - fittings \varnothing 1/4"FF - max 10 bar
 VITON sealing - orifice \varnothing 2.5 mm
 with coil ZB09 9W 220/230V 50/60Hz
 fluid temperature -10°C +140°C



GAGGIA WGADM2115

Suitable for:

3120032 COIL PARKER ZB09 9W 220/240V 50/60Hz
 width 34 mm - height 33 mm
 depth 43 mm



GAGGIA

1120335 3-WAY SOLENOID VALVE PARKER 230V 50/60Hz
 VE128IR - drain \varnothing 1/8" conical - max 10 bar
 RUBY seal - orifice \varnothing 1.3 mm
 with coil ZB09 9W 220/230V 50/60Hz
 fluid temperature -30°C+140°C



GAGGIA DM0647/S

GAGGIA WGADM0647

3120032 COIL PARKER ZB09 9W 220/240V 50/60Hz
 width 34 mm - height 33 mm
 depth 43 mm



GAGGIA

1120339 3-WAY MECHANICAL COMPONENT PARKER
 VE128IR - drain \varnothing 1/8" conical - max 10 bar
 RUBY seal - orifice \varnothing 1.3 mm
 fluid temperature -30°C+140°C



GAGGIA

1120366 3-WAYS SOLENOID VALVE OLAB 230V 50Hz
 coil 8000BH/K511 230V 50Hz 15VA



GAGGIA DM1152/001

GAGGIA DM1152/003

GAGGIA DM1645/001

Spouts for coffee

1022524 DOUBLE SPOUT \varnothing 3/8"



GAGGIA WGA6301004010

1022550 SINGLE SPOUT \varnothing 3/8"



GAGGIA



Suitable for:

1022061 SPOUT BLACK



GAGGIA 142855450

GAGGIA



Suitable for:

1022503 STRAIGHT SINGLE SPOUT \varnothing 3/8"



GAGGIA WGA26G0112

Springs

1250258 DOSER LEVER RETURN SPRING



GAGGIA MDB0292

1250241 FORK SPRING FOR PIPE \varnothing 4 mm



GAGGIA 9011.144

5071472 FORKSPRING INTERNAL \varnothing 11 mm



GAGGIA NF11.084

1250534 SPRING \varnothing 12x22 mm



GAGGIA RB0882

GAGGIA WGARB0882

1250536 SPRING \varnothing 13x42 mm



GAGGIA WGA40010890

1250238 SPRING \varnothing 4x21 mm
for COFFEE MACHINES steam needle tap
for VENDING needle holder / boiler



GAGGIA 126765317

1250901 SPRING \varnothing 4x29 mm
for boiler needle valve



GAGGIA 9011.132

1250367 SPRING \varnothing 7.6x17 mm
for mushroom valve



GAGGIA EF0013

5031970 SPRING \varnothing 7x21 mm
for mushroom valve



GAGGIA 126761518

1250259 STAR SPRING



GAGGIA MDB0256



Stars and spare parts

1343077 PLATE SCRAP SEPARATOR



GAGGIA MDB0240

1343078 TOP STAR



GAGGIA MDB0215

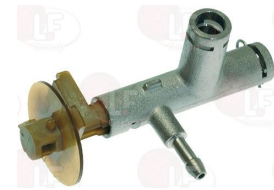
Steam taps and spares for coffee mach.

1348600 COMPLETE STEAM TAP



GAGGIA WGA8001027000

1348085 STEAM TAP



GAGGIA 0345.R05

GAGGIA 11003733

1348114 STEAM TAP
D-shaped pin \varnothing 6x4.3 mm



GAGGIA EF0097/A

GAGGIA 11010318

1348116 STEAM TAP
D-shaped pin \varnothing 6x4.3 mm



GAGGIA B0153/A

5038340 STEAM TAP



GAGGIA EF0045/01/A

GAGGIA 11012628

1439026 STEAM TAP EXTENSION



GAGGIA WGARB0721

5052727 TAP WATER/STEAM V2



GAGGIA 11012381

1348101 WATER/STEAM TAP



GAGGIA 11004625



Suitable for:

GAGGIA



Suitable for:

Steam-water pipes coffee machines

1449174 BALL COUPLING STEAM PIPE



GAGGIA 4332049000

1549017 COMPLETE STEAM PIPE \varnothing 8 mm
pipe length 360 mm



GAGGIA RB0856/A

1449133 NOOZLE FOR STEAM PIPE



GAGGIA 11001620

1449132 NOZZLE FOR STEAM OUTLET



GAGGIA 11001621

GAGGIA 11011504

1549021 PIPE STEAM COMPLETE \varnothing 10 mm
pipe length 275 mm



GAGGIA WGA8003013000

GAGGIA WGA8003013010

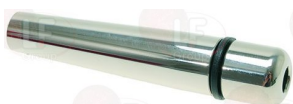
GAGGIA 11011247

5047887 PLASTIC PANNARELLO
length 83 mm
for GAGGIA CLASSIC-ESPRESSO-ESPRESSODELUXE-NEWBABY
EVOLUTION-COFFEE97-TS



GAGGIA 8301006000

5047884 STAINLESS STEEL STEAM SPRINKLER
length 82 mm



GAGGIA 227431321

1449317 WATER PIPE NOZZLE



GAGGIA WGA5001005000

1449332 WATER PIPE NOZZLE
for GAGGIA DECO
for BIANCHI HORECA SOFIA



GAGGIA 11004974



Switches

1319319 BIPOLAR SWITCH 16A 250V
with indicator light



GAGGIA 5332002000

1319377 BIPOLAR SWITCH 16A 250V
with indicator light



GAGGIA 5332003000

1319542 BIPOLAR SWITCH 16A 250V
square pin 6x6 mm - button block 13x19 mm
for coffee delivery



GAGGIA WGA5001001000

GAGGIA 12001020

1319329 BLACK BIPOLAR SWITCH 16A 120/230V
silk-screen printing "steam"
mounting hole 11x27 mm



GAGGIA DM1884/01

1319380 BLACK BIPOLAR SWITCH 16A 120/230V
silk-screen printing "cup"
mounting hole 11x27 mm



GAGGIA DM1883/01

1319318 BLACK BIPOLAR SWITCH 16A 250V
silk-screen printing "cup"
mounting hole 11x27



GAGGIA DM1913/01

1319376 BLACK BIPOLAR SWITCH 16A 250V
silk-screen printing "on-off"
hole \varnothing 20 mm



GAGGIA 5332004000

1319382 BLACK BIPOLAR SWITCH 16A 250V
silk-screen printing "0-1"
mounting hole 13x27 mm



GAGGIA NE03.038

1319599 BLACK BIPOLAR SWITCH 16A 250V
mounting hole 13x20 mm



GAGGIA 11027329

3452004 SWITCH COVER
external dimensions 25x20 mm
for switch with mounting hole 20x13 mm





Suitable for:

GAGGIA



3319920 BLACK TWO-POLE SWITCH 16A 250V



GAGGIA 5024008000

3319646 GREEN/ORANGE CAM



Suitable for:

3319923 BLACK/RED CAM



1319663 BUTTON FOR SWITCH



GAGGIA 11028043

1319578 CHROME-PLATED PUSH-BUTTON



GAGGIA WGA6003016000

1319330 DOUBLE BLACK SWITCH 16A 120/230V
with one green led indicator light
silk-screen printing "steam"
silk-screen printing "coffee"
mounting hole 22x30 mm



GAGGIA DM1477

1319379 GREY BIPOLAR SWITCH 16A 250V
with indicator light
silk-screen printing "steam"
mounting hole 22x27 mm



GAGGIA 5301004020

1319381 MONOPOLAR SWITCH 16A 120/230V



GAGGIA 5337002000

1319067 PUSH-BUTTON PANEL 5 BUTTONS



GAGGIA DM1878

1319528 PUSH-BUTTON PANEL 5 BUTTONS



GAGGIA WGA8003007000

1319579 PUSH-BUTTON PANEL 5 BUTTONS



GAGGIA DM1877

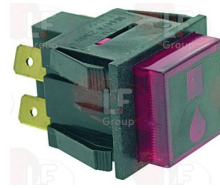
1319562 PUSH-BUTTON SUPPORT



GAGGIA WGA4001080000

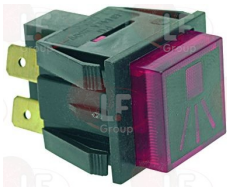
Suitable for:

1319251 RED BIPOLAR PUSH BUTTON 16A 250V
with indicator lamp
silk-screen printing "water"
mounting hole 22x27 mm



GAGGIA DM1172/220

1319252 RED BIPOLAR PUSH BUTTON 16A 250V
with indicator lamp
silk-screen printing "steam"
mounting hole 22x27 mm



GAGGIA DM1160/220

1319128 RED BIPOLAR SWITCH 16A 250V
16(4)A 250V - with green indicator lamp
mounting hole 22x30 mm



GAGGIA S435063

3319948 RED BIPOLAR SWITCH 16A 250V
16(4)A 250V - with indicator light
max temperature 120°C
mounting hole \varnothing 25 mm



GAGGIA DM2104

GAGGIA WGADM2104

3319151 SWITCH PROTECTION CAP
 \varnothing external 34 mm
for push-buttons with mounting hole \varnothing 25 mm



1319547 SINGLE-POLE PUSH-BUTTON 16A 250V
square pin 6x6 mm - button block 13x19 mm
for coffee delivery



GAGGIA WGA5001009000

1319544 SINGLE-POLE SWITCH 16A 250V
square pin 6x6 mm - button block 13x19 mm
for coffee delivery



GAGGIA WGA5302001000

3319921 SINGLE-POLE SWITCH 16A 250V



GAGGIA 5024006000

3319923 BLACK/RED CAM





Suitable for:

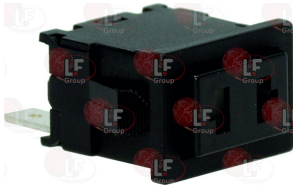
GAGGIA



Suitable for:

1319664 SWITCH 2-POLE BLACK 16A 250V

mounting hole 13x20 mm
for coffee brewing
for steam outlet



GAGGIA 11027328

3319012 SWITCH 2-POLE GREEN 16A 250V

16(4)A 250V - max. temperature 120°C
with indicator lamp and push-button cap
mounting hole 22x30 mm - silk screen print 0 - I



GAGGIA 4931C00061001

3319780 BLOCK CONNECTION WHITE 30x22 mm



3319779 BLOCK CONNECTIONS BLACK 30x22 mm



3319782 FRAME SAFETY 2 SIDES BLACK 30x22 mm



3319783 FRAME SAFETY 4 SIDES BLACK 30x22 mm

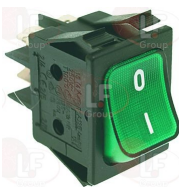


3319501 PUSH-BUTTON PROTECTION CAP external dimensions 29x36 mm for switches with mounting hole 22x30 mm



3319944 SWITCH 2-POLE GREEN 16A 250V

16(4)A 250V - max. temperature 120°C
with indicator lamp - silk screen printing 0 - I
mounting hole 22x30 mm



GAGGIA S435061

3319780 BLOCK CONNECTION WHITE 30x22 mm





Suitable for:

3319779 BLOCK CONNECTIONS BLACK 30x22 mm



3319783 FRAME SAFETY 4 SIDES BLACK 30x22 mm



3319016 SWITCH 2-POLE RED 16A 250V
16(4)A 250V - max. temperature 120°C
with indicator lamp - silk screen printing 0 - I
mounting hole 22x30 mm



GAGGIA 5008002000

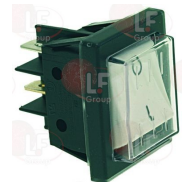
3319779 BLOCK CONNECTIONS BLACK 30x22 mm



3319783 FRAME SAFETY 4 SIDES BLACK 30x22 mm



1319350 WHITE BIPOLAR SWITCH 16A 250V
16(4)A 250V - with push-button cap
silk-screen printing 0 - I
mounting hole 22x30 mm



GAGGIA 4931C00061021

GAGGIA



Suitable for:

3319782 FRAME SAFETY 2 SIDES BLACK 30x22 mm



3319501 PUSH-BUTTON PROTECTION CAP
external dimensions 29x36 mm
for switches with mounting hole 22x30 mm



3319780 BLOCK CONNECTION WHITE 30x22 mm



3319782 FRAME SAFETY 2 SIDES BLACK 30x22 mm



3319501 PUSH-BUTTON PROTECTION CAP
external dimensions 29x36 mm
for switches with mounting hole 22x30 mm



3319780 BLOCK CONNECTION WHITE 30x22 mm





Suitable for:

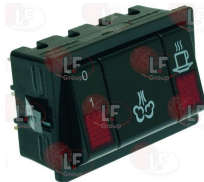
3319779 BLOCK CONNECTIONS BLACK 30x22 mm



3319783 FRAME SAFETY 4 SIDES BLACK 30x22 mm



1319323 3-BUTTON PANEL 16A 250V



GAGGIA DM1475

GAGGIA



Suitable for:

3319782 FRAME SAFETY 2 SIDES BLACK 30x22 mm



3319501 PUSH-BUTTON PROTECTION CAP
external dimensions 29x36 mm
for switches with mounting hole 22x30 mm



1319383 6-BUTTON PANEL



GAGGIA 8332030000

Tampers for coffee

1385002 NYLON COFFEE TAMPER ø 50/57 mm



GAGGIA WGA2PR/1

1385000 NYLON TAMPER ø 50/52 mm



GAGGIA 2PR/1

Terminal blocks

3247009 6-POLE TERMINAL BLOCK FV122/B 40A 600V
for cable max 6 mm²
operating temperature 150°C
nominal voltage 450 V



GAGGIA DM1371

GAGGIA WGADM1930

GAGGIA WGADM1931



Thermostats

- 3444442 THREE-PHASE THERMOSTAT 170°C**
with manual reset
covered capillary 880 mm
bulb \varnothing 6x88 mm



GAGGIA 5024007000

Vibrating pumps

- 1349651 PIPETTE FITTING 90°**
SANTOPRENE
internal pump connection \varnothing 6 mm
hose-end fitting \varnothing 7.5 mm

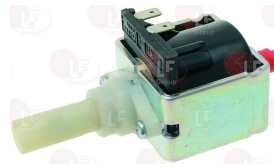


GAGGIA B0095

GAGGIA DM1596

GAGGIA 147920150

- 5062552 PUMP VIBRATORY EAP5 52W 120V 60Hz**
fittings \varnothing 1/8" - \varnothing 6 mm
max pressure 15 bar
water temperature max 25°C
integrated diode (1N 4007P)
connector terminal 6.3x0.8 mm



GAGGIA 12000142

- 5057079 SAFETY VALVE FOR VIBRATION PUMP**



GAGGIA 11004689

GAGGIA 11010166

- 1331023 SQUARE DAMPER EX-EP-EK-EA**



GAGGIA WGADY0003

GAGGIA 149185850

GAGGIA 9991.056

- 1331022 SQUARE DAMPER HF**



GAGGIA 11012194

- 2102265 VIBRATION PUMP EP5 41W 120V 60Hz**
connections \varnothing 1/8" - \varnothing 6 mm
max pressure 15 bar
water temperature max 25°C
integrated diode (1N 4007P)
connection terminal 6.3x0.8 mm



GAGGIA 12000131



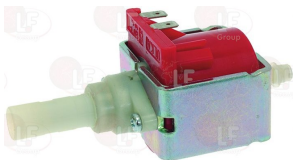
Suitable for:

GAGGIA



1122737 VIBRATORY PUMP EP5 48W 230V 50Hz

fittings \varnothing 1/8" - \varnothing 6 mm
pressure max 15 bar
water temperature max 20°C
integrated diode (1N 4007P)
lead connector 6.3x0.8 mm

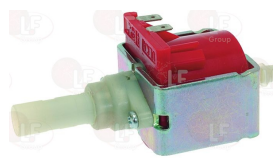


GAGGIA DM1594/230240

Suitable for:

1122738 VIBRATORY PUMP EP5 48W 24V 50/60Hz

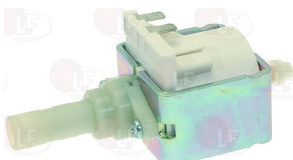
fittings \varnothing 1/8" - \varnothing 6 mm
pressure max 15 bar
water temperature max 20°C
integrated diode (1N 4007P)
lead connector 6.3x0.8 mm



GAGGIA

1331026 VIBRATORY PUMP EP5GW 48W 230V 50Hz

countersunk fitting \varnothing 1/8" - \varnothing 6 mm
max. pressure 15 bar
max water temperature 20°C
integrated diode (1N 4007P)
lead connection 6.3x0.8 mm

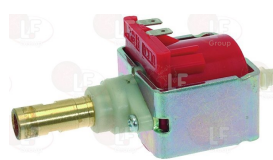


GAGGIA 12000140

GAGGIA 12000833

1122735 VIBRATORY PUMP EX5 48W 230V 50Hz

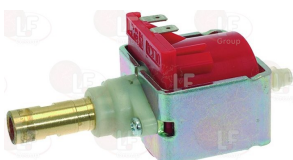
fittings \varnothing 1/8" - \varnothing 6 mm
pressure max 15 bar
water temperature max 20°C
integrated diode (1N 4007P)
lead connector 6.3x0.8 mm



GAGGIA

1122736 VIBRATORY PUMP EX5 48W 24V 50/60Hz

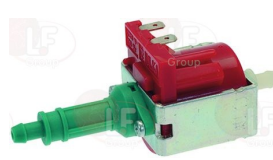
fittings \varnothing 1/8" - \varnothing 6 mm
pressure max 15 bar
water temperature max 20°C
integrated diode (1N 4007P)
lead connector 6.3x0.8 mm



GAGGIA

1331021 VIBRATORY PUMP HF 22W 230V 50Hz

hose-end fitting \varnothing 6.6 mm - \varnothing 6.6 mm
max pressure 2.6 bar
water temperature max 20°C
integrated diode (1N 4007P)
lead connector 4.7x0.8 mm



GAGGIA 12001212

1122741 VIBRATORY PUMP INVENSYS/ARS CP3a/ST

65W 230V 50Hz
fittings \varnothing 1/8"
built-in diode



GAGGIA 187721758



Water containers for OCS HORECA

5049142 CONTAINER FOR WATER
max. encumbrance 180x110x150 mm



GAGGIA 11002017

5049853 CONTAINER FOR WATER
max. encumbrance 280x245x60 mm



GAGGIA 222693300

5061227 CONTAINER FOR WATER
max. encumbrance 260x155x70 mm



GAGGIA 11013212

1186844 GASKET GREY COVER
for water tank receiver connection
external \varnothing 35 mm - internal \varnothing 15 mm



GAGGIA 0701.031.150

5029644 GASKET HOLDER
for water container



GAGGIA 0701.014.150

5030079 TANK FOR WATER



GAGGIA 142690381

1080115 WATER TANK LID BLACK
dimensions 196x74 mm



GAGGIA 142802050

Water filling taps

1358005 COMPLETE WATER INLET TAP



GAGGIA WGA8001033000

GAGGIA 8024029000



Suitable for:

GAGGIA



Suitable for:

Water softeners and accessories

5050501 DESCALING CARTRIDGE FILTER
model INTENZA+



GAGGIA 21000961

GAGGIA 21001419

GAGGIA 21001711

3010303 WATER SOFTENER FOR OCS NICAL 125
for water treatment for TECHNICAL purposes
descaling/anti-fouling system suitable f/machines
with inlet pipes
with strong cation-exchange resin
operating range 18°Fr 22L
operating range 27°Fr 16L
operating range 45°Fr 9L
dimensions \varnothing 44x100 mm - from 0°C to 40°C




















GAGGIA LF-3010304

The data herewith contained may change without notice and LF SpA cannot be held responsible for possible errors stated or resulting by the use of this document. All rights reserved. No part of this publication may be reproduced without written permission by LF SpA.



Distributing Components, Spare Parts & Accessories in original quality worldwide

-
-  **LF SpA HEADQUARTERS**
via Voltri, 80 - 47522 Cesena (FC) ITALY
Tel. +39 0547 34 11 11 - Fax +39 0547 34 11 10
www.lfrcambi724.it - www.lfrcambi724.mobi
info@lfrcambi.it
Export Dept.: Tel. +39 0547 34 11 50 - Fax: +39 0547 34 11 55
www.lfspareparts724.com - www.lfspareparts724.mobi
export@lfspareparts.com
-  **LF SpA HOUSEHOLD COMPONENTS DIVISION**
Via Padriciano, 34149 Trieste - Italia - AREA Science Park
Tel. +39 0547 34 12 42 - Fax +39 0547 34 12 48
www.lfspareparts724.com - www.lfspareparts724.mobi
info@lfspareparts.com
-  **EPGC Sas FRANCE**
13, Rue des Forts - 59960 Neuville en Ferrain
Tel. +33 (0)3 20 25 06 21
Fax +33 (0)3 20 25 34 12
www.epgc.com
www.epgc724.mobi
epgc@epgc.com
-  **LF GmbH GERMANY**
Junkersstrasse, 3 - D-82178 Puchheim - München
Tel. +49 89 89 45 78 66
Fax +49 89 89 45 78 88
www.lfersatzteile724.de
www.lfersatzteile724.mobi
info@lfersatzteile.de
-  **LF China REPUBLIC OF CHINA**
Room 403, No.2, Huadu Mansion, Lane 422, Huanghua Rd.
Minhang Dist. - 201103 Shanghai
Tel. +86 (0)21 33 53 66 31
Fax +86 (0)21 33 53 66 32
www.lfspareparts724.com
www.lfspareparts724.mobi
china@lfspareparts.com
-  **OOO LF RUSSIAN FEDERATION**
Ul. Anatoliya Zhivova, 8 - office 1 - 123100 Moscow
Tel./Fax +7 495 725 26 53
www.lfspareparts724.ru
www.lfspareparts724.mobi
info@lfspareparts.ru
-  **LF Repuestos Horeca S.L.U. SPAIN**
Poligono Industrial Carpetania - C/Miguel Faraday, 8 - 28906 Getafe
Tel. +34 91 477 91 00
Fax +34 91 477 90 81
www.lfrepuestos-horeca724.es
www.lfrepuestos724.mobi
info@lfrepuestos.es
-  **LF SpA Cesena (IT) Swiss Branch Steinhausen SWITZERLAND**
Sennweidstrasse, 45 - CH-6312 Steinhausen
Tel. +41 (0)41 760 15 80-1
Fax +41 (0)41 760 15 85
www.lfersatzteile724.ch
www.lfersatzteilech724.mobi
info@lfersatzteile.ch
-  **LF Spare Parts Ltd. UNITED KINGDOM**
A10a Lakeside Business Park, Broadway Lane
South Cerney, Gloucestershire GL7 5XL
Tel. +44 (0)1285 86 16 25
Fax +44 (0)1285 86 39 49
www.lfspareparts724.co.uk
www.lfspareparts724.mobi
info@lfspareparts.co.uk
-
-  **AUSTRALIA AND NEW ZEALAND**
www.lfspareparts724.com
andrea.calvio@lfspareparts.com
-  **AUSTRIA**
www.lfersatzteile724.at
info@lfersatzteile.at
-  **BALKAN COUNTRIES**
www.lfspareparts724.com
matijaramov@lfspareparts.com
-  **BALTIC COUNTRIES**
www.lfspareparts724.com
inara.silina@lfspareparts.com
-  **CENTRAL AND EASTERN EUROPE**
www.lfspareparts724.cz
jiri.kremla@lfspareparts.cz
-  **DENMARK**
www.lfspareparts724.dk
michael.leth@lfspareparts.com
-  **JAPAN**
www.lfspareparts724.jp
hiroshi.ukai@lfspareparts.jp
-  **SOUTH KOREA**
www.lfspareparts724.com
fabio.doni@lfspareparts.com
-  **TURKEY**
www.lfyedekparca724.com
basar.ergun@lfyedekparca.com
-  **USA AND CANADA**
www.lfspareparts724.us
sauro.dallaglio@lfspareparts.us
howard.truitt@lfspareparts.us