



# Spare parts for the professional sector: Commercial refrigeration



Suitable for:

# FRIGINOX



This catalogue is automatically generated.  
Therefore, the sequence of the items might  
not be always shown at best.  
Updates will be issued in case of additions  
and/or amendments.

*Suitable universal spare parts may not be included*

Rel. 2018-02151700





Suitable for:

# FRIGINOX



Suitable for:

## Compressors and spare parts

**3070023 COMPRESSOR CUBIGEL ML80TB CSIR**  
220/240V 50Hz  
power 3/8 Hp, displacement 7.57 cc  
gas R404a/R507 HMBP  
for Refrigerated cupboard (FRIGINOX) AMF13



FRIGINOX FX95030110

**3070184 COMPRESSOR EMBRACO NEK6210GK CSIR**  
220/240V 50Hz  
power 3/8 Hp, displacement 8.78 cc  
gas R404a/R507 HMBP  
ASPERA



FRIGINOX FX95055832

**3070250 COMPRESSOR TECUMSEH AE4440Z CSIR**  
220/240V 50Hz  
power 1/3 Hp, displacement 6.7 cc  
gas R404a/R507 HMBP  
for Refrigerated cupboard (FRIGINOX) G/GL2



FRIGINOX FX95055945

**3070097 COMPRESSOR TECUMSEH CAJ2446Z/R CSR**  
220/240V 50Hz  
Rotolock suction connection  
power 1.2 Hp, displacement 26.1 cc  
gas R404a/R507 LBP



FRIGINOX FX95025417

## Copper pipes for refrigeration

**3046018 CAPILLARY TUBE  $\phi$  1.24 mm INTERNAL**  
approx 3 kg bundle  
for Refrigerated cupboard (FRIGINOX)  
G/GL2 START+POSIT - MINI ACH2 ATLAS



FRIGINOX FX95005278



## Electronic controllers

- 7107951 THERMOSTAT ELIWELL ID PLUS 961**  
 230V 50/60Hz  
 1 relay output 2 HP compressor  
 1 NTC probe included 1500 mm silicone  
 1 NTC probe included 1500 mm silicone  
 defrost stop  
 TTL input for Copy Card  
 Front dimensions 74x32 59mm depth  
 cutout 71x29 mm  
 for Refrigerated cupboard (FRIGINOX) G/GL1  
 G/GL1 star + positif cond air - G1-BT - PGE2  
 for Refrigerated table (FRIGINOX) TP/TPL4S  
 TPO/TPL04S



FRIGINOX FX95040273

## Filters for refrigeration

- 7100513 COPPER FILTER 10 g**  
 2 ways - inlet 6.5 mm output 2.6 mm  
 ø 16 mm - length 112 mm



FRIGINOX FX95035960

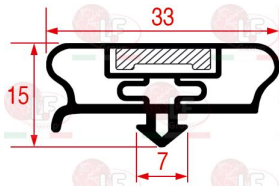
- 3160378 DEHYDRATOR FILTER HERCULES**  
 inlet 8 mm outlet 3.30 mm  
 length 270 mm



FRIGINOX FX95040719

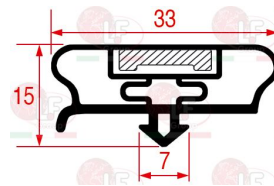
## Gaskets for refrigerators

- 5043774 SNAP-IN GASKET 1538x670 mm**  
 for Refrigerated cupboard (FRIGINOX) FRISTAR G1  
 G/GL1 - GN/GLN2 - SR50 G/GL2



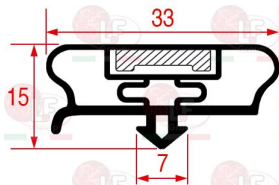
FRIGINOX FX95021747

- 3286071 SNAP-IN GASKET 390x225 mm**  
 for Refrigerated table (FRIGINOX) TGE6S



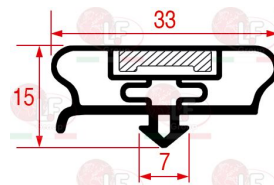
FRIGINOX FX95030516

- 3286072 SNAP-IN GASKET 660x385 mm**  
 for Refrigerated cupboard (FRIGINOX) TGE3 TGE2



FRIGINOX FX95030151

- 3286073 SNAP-IN GASKET 660x455 mm**  
 for Refrigerated cupboard (FRIGINOX) TPR3  
 for Refrigerated cupboard (FRIGINOX) DB2 - DB4S  
 TPR3  
 for Refrigerated table (FRIGINOX) TPO/TPL04S TC3



FRIGINOX FX95030136



Suitable for:

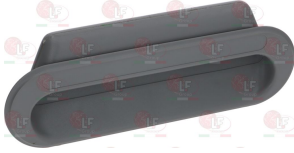
# FRIGINOX



Suitable for:

## Handles

**7102592 BUILT-IN HANDLE OF PLASTIC GREY**  
dimensions 250x90 mm  
for Refrigerated cupboard (FRIGINOX) DB3  
for Refrigerated cupboard electric (FRIGINOX)  
G/GL1 STAR



FRIGINOX FX95052742

**7105217 CLOSING 4181 WITH LOCK**  
with internal safety handle  
for Refrigerated cupboard (FRIGINOX)  
ATLAS-2004 GN1-1 AT1



FRIGINOX FX95040272

**3242359 DOOR SHIM FITTING 52/72 mm**  
for lock 920/921



FRIGINOX FX95040010

**3242945 LH-RH CATCH WITH LOCK 571 CR**  
straight handgrip  
base length 150x23x30h mm  
mounting distance 110 mm  
catch height 16.5 mm



FRIGINOX FX95040124

**3242947 LOCKING HANDLE RH/LH W/OUT LOCK 791 CR**  
curved handle  
length 254x30 mm - mounting distance 133 mm  
adjustable catch between 9 and 22 mm



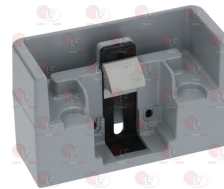
FRIGINOX FX95014551

**3242357 LOCKING HANDLE WITHOUT CLAMP 920**  
without key lock  
245x108xh52 mm



FRIGINOX FX95039996

**3242359 DOOR SHIM FITTING 52/72 mm**  
for lock 920/921



FRIGINOX FX95040010



## Heating elements

- 3455283 CARTRIDGE HEATING ELEMENT 50W 230V**  
 cartridge length 215 mm ø 10 mm  
 cable length 1500 mm  
 for TRAY  
 for Refrigerated cupboard (FRIGINOX)  
 for Refrigerated table (FRIGINOX)  
 for Refrigerated cupboard (FRIGINOX) MINI ACH1  
 ATLAS AT25GN2/1



FRIGINOX FX95011367

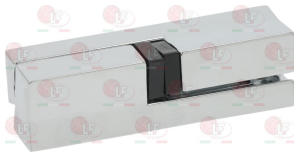
- 3455282 CARTRIDGE HEATING ELEMENT 75W 230V**  
 cartridge length 205 mm ø 10 mm  
 cable length 3250 mm  
 for TRAY  
 for Refrigerated cupboard (FRIGINOX)  
 for Refrigerated table (FRIGINOX)  
 for Refrigerated cupboard (FRIGINOX) G/GL2 G/GL1



FRIGINOX FX95015798

## Hinges, catches and accessories

- 3053389 CHROME-PLATED HINGE 308**  
 length 120 mm - mounting distance 50 mm



FRIGINOX FX95014445

- 3053942 DOOR UPPER BRACKET**



FRIGINOX

- 7104100 HINGE**  
 dimensions 75x25 mm  
 for Refrigerated cupboard (FRIGINOX) FRISTAR+  
 G/GL2 - GN/GLN1 G1



FRIGINOX FX95296950

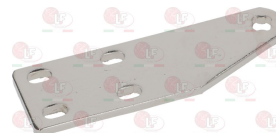
- 3053941 HINGE FERMOD 175**  
 with cross-head pin  
 for Refrigerated cupboard (FRIGINOX) C/CL500  
 G/GL2 G1  
 for Refrigerated table (FRIGINOX) TC3



FRIGINOX FX95014601

FRIGINOX 95014601

- 3053942 DOOR UPPER BRACKET**



FRIGINOX



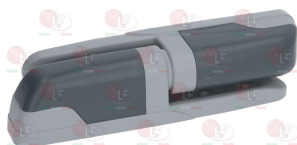
Suitable for:

**7101477 HINGE WITH PIN RH/LH**  
dimensions 150x45 mm  
for Refrigerated cupboard (FRIGINOX) C/CL500  
G/GL1 - G/GL2 - MINI ACH1  
SR1 iC RC80-22 iC SR1P iC - SR15A G1  
for Refrigerated cupboard electric (FRIGINOX)  
for Refrigerated table (FRIGINOX) TC3



FRIGINOX FX95018875

**3053429 HINGE 471 HP WITH RAMP**  
mounting distance 30 mm



FRIGINOX FX95040690

## FRIGINOX



Suitable for:

**3053560 HINGE 456 PAINTED WITH RAMP**  
mounting distance 32-16 mm



FRIGINOX FX95022109

## Locks

**5045573 COMPLETE LOCK**  
for Refrigerated cupboard (FRIGINOX) FRISTAR/G



FRIGINOX FX95051645

## Microswitches, mechanical

**5050688 MICROSWITCH ARCOLECTRIC HK3141AA**  
1-NC 1-NO 5A 250V  
white colour



FRIGINOX FX95033270



## Motors

**3340047 MOTOR COPREL AX010/5B-1RSX**  
 230V 50/60Hz 3.3W 2650rpm  
 shaft length 53 mm  
 interchangeable with ELCO CN3-20-0/205



FRIGINOX FX95036034

**3240580 MOTOR EBM M4Q045-CA03-75 PENTAVALENT**  
 230V 50/60Hz 10W 1300rpm  
 for Refrigerated cupboard (FRIGINOX) G/GL2  
 for Refrigerated cupboard (FRIGINOX) AT1 - G/GL1  
 G1-BT - TGE55 AT2



FRIGINOX FX95040257

**3240627 MOTOR EBM M4Q045-DA01-75 PENTAVALENT**  
 230V 50/60Hz 18W 1300rpm



FRIGINOX FX95015350

**3240211 MOTOR ELCO VN 10-20 PENTAVALENT**  
 230V 50/60Hz 10W 1300rpm



FRIGINOX FX95023693

**3805013 MOTOR FAN 18 W WITH RING**  
 230V 50Hz  
 suction fan ø 200 mm  
 R1825/005.200.025



FRIGINOX

**3805012 MOTOR FAN 7 W WITH RING**  
 230V 50Hz  
 suction fan ø 200 mm  
 VN7.20/651 A200.28  
 for Refrigerated cupboard (FRIGINOX) ACH2  
 for Refrigerated cupboard (FRIGINOX) G/GL2000



FRIGINOX FX95024089

## Probes

**3397164 SILICONE PTC PROBE 1500 mm**  
 2 wire probe temperature range -55+150°C  
 bulb ø 6x40 mm  
 for Refrigerated cupboard (FRIGINOX) ASP 651



FRIGINOX FX95036281



Suitable for:

# FRIGINOX



Suitable for:

## Refrigerators evaporators

**7104274 EVAPORATOR 270x230x130 mm**  
 for Refrigerated cupboard (FRIGINOX) G/GL1300  
 MINI ACH1  
 for Refrigerated cupboard (FRIGINOX) FRISTYLE  
 G/GL1300 - G/GL2000 - G/GL650 - MINI ACH1  
 MINI ACH2 GMT1300 F+



FRIGINOX FX95025888

## Thermostatic valves for refrigeration

**3150049 DANFOSS ORIFICE 03**  
 068-2006



FRIGINOX FX95008835

**3150136 NOZZLE DANFOSS 01**  
 068-2091  
 only with welding valve



FRIGINOX FX95034070

**3150103 NOZZLE DANFOSS 03**  
 068-2093  
 only with welding valve



FRIGINOX FX95034393

**3150044 THERMOSTATIC VALVE DANFOSS TES2**  
 gas R404a/R507  
 with external equalizer 1/4"sae  
 inlet 3/8"sae  
 outlet 1/2"sae  
 operating range -40°/+10°C  
 Danfoss 068Z3403



FRIGINOX FX95025995



The data herewith contained may change without notice and LF SpA cannot be held responsible for possible errors stated or resulting by the use of this document. All rights reserved. No part of this publication may be reproduced without written permission by LF SpA.



## Distributing Components, Spare Parts & Accessories in original quality worldwide

- 
- LF SpA HEADQUARTERS**  
via Voltri, 80 - 47522 Cesena (FC) ITALY  
Tel. +39 0547 34 11 11 - Fax +39 0547 34 11 10  
[www.lfricambi724.it](http://www.lfricambi724.it) - [info@lfricambi.it](mailto:info@lfricambi.it)  
Export Dept. Tel. +39 0547 34 11 50 - Fax +39 0547 34 11 55  
[www.lfspareparts724.com](http://www.lfspareparts724.com) - [export@lfspareparts.com](mailto:export@lfspareparts.com)
- LF SpA HOUSEHOLD COMPONENTS DIVISION**  
Via Padriciano, 99 - AREA Science Park - 34149 Trieste (TS) ITALY  
Tel. +39 0547 34 12 42 - Fax +39 0547 34 12 48  
[www.lfspareparts724.com](http://www.lfspareparts724.com) - [info@lfspareparts.com](mailto:info@lfspareparts.com)
- EPGC Sas FRANCE**  
13, Rue des Forts - 59960 Neuville en Ferrain  
Tel. +33 (0)3 20 25 06 21 - Fax +33 (0)3 20 25 34 12  
[www.epgc.com](http://www.epgc.com) - [epgc@epgc.com](mailto:epgc@epgc.com)
- LF GmbH GERMANY**  
Junkersstrasse, 3 - D-82178 Puchheim - München  
Tel. +49 89 89 45 78 66 - Fax +49 89 89 45 78 88  
[www.lfersatzteile724.de](http://www.lfersatzteile724.de) - [info@lfersatzteile.de](mailto:info@lfersatzteile.de)
- LF China REPUBLIC OF CHINA**  
Room 403, No.2, Huadu Mansion, Lane 422, Huanghua Rd.  
Minhang Dist. - 201103 Shanghai  
Tel. +86 (0)21 33 53 66 31 - Fax +86 (0)21 33 53 66 32  
[www.lfspareparts724.com](http://www.lfspareparts724.com) - [china@lfspareparts.com](mailto:china@lfspareparts.com)
- OOO LF RUSSIAN FEDERATION**  
Ul. Anatoliya Zhivova, 8 - office 1 - 123100 Moscow  
Tel./Fax +7 495 725 26 53  
[www.lfspareparts724.ru](http://www.lfspareparts724.ru) - [info@lfspareparts.ru](mailto:info@lfspareparts.ru)
- LF Repuestos Horeca S.L.U. SPAIN**  
Poligono Industrial Carpetania - C/Miguel Faraday, 8 - 28906 Getafe  
Tel. +34 91 477 91 00 - Fax +34 91 477 90 81  
[www.lfrepuestos-horeca724.es](http://www.lfrepuestos-horeca724.es) - [info@lfrepuestos.es](mailto:info@lfrepuestos.es)
- LF Scandinavia Aps - LF Spareparts S.p.A. DENMARK**  
Nupark, 51 - 7500 Holstebro  
Tel. +45 70 70 77 33  
[www.lfspareparts724.dk](http://www.lfspareparts724.dk) - [denmark@lfspareparts.dk](mailto:denmark@lfspareparts.dk)
- LF SpA Cesena (IT) Swiss Branch Steinhausen SWITZERLAND**  
Sennweidstrasse, 45 - CH-6312 Steinhausen  
Tel. +41 (0)41 760 15 80/1 - Fax +41 (0)41 760 15 85  
[www.lfersatzteile724.ch](http://www.lfersatzteile724.ch) - [info@lfersatzteile.ch](mailto:info@lfersatzteile.ch)
- LF Spare Parts Ltd. UNITED KINGDOM**  
A10a Lakeside Business Park, Broadway Lane  
South Cerney, Gloucestershire GL7 5XL  
Tel. +44 (0)1285 86 16 25 - Fax +44 (0)1285 86 39 49  
[www.lfspareparts724.co.uk](http://www.lfspareparts724.co.uk) - [info@lfspareparts.co.uk](mailto:info@lfspareparts.co.uk)
- LF Central Est Europe S.r.o. CZECH REPUBLIC**  
Antala Staska 1859/34  
14000 Praha 4 - KRC  
Tel. +420 730 156 910  
[www.lfspareparts724.cz](http://www.lfspareparts724.cz) - [info@lfspareparts.cz](mailto:info@lfspareparts.cz)
- LF SPARE PARTS INC. USA**  
Legal address:  
155 Office Plaza Dr - Suite A - Tallahassee, FL 32301  
Business/Mailing address:  
1100 South Tower, 225 Peachtree St., N.E. - Atlanta, GA 30303, USA  
Tel. +1-404-525-2600 - Fax +1-404-586-3528  
[www.lfspareparts724.us](http://www.lfspareparts724.us) - [info@lfspareparts.us](mailto:info@lfspareparts.us)  
Tel. West Coast and Midwest: 206-349-1525 Sauro  
Tel. East Coast and the Caribbean: 786-817-1764 Luis
- 
- AUSTRALIA AND NEW ZEALAND**  
[www.lfspareparts724.com](http://www.lfspareparts724.com)  
[andrea.calvio@lfspareparts.com](mailto:andrea.calvio@lfspareparts.com)
- AUSTRIA**  
[www.lfersatzteile724.at](http://www.lfersatzteile724.at)  
[info@lfersatzteile.at](mailto:info@lfersatzteile.at)
- BALKAN COUNTRIES**  
[www.lfspareparts724.com](http://www.lfspareparts724.com)  
[matija.ramov@lfspareparts.com](mailto:matija.ramov@lfspareparts.com)
- BALTIC COUNTRIES**  
[www.lfspareparts724.com](http://www.lfspareparts724.com)  
[inara.silina@lfspareparts.com](mailto:inara.silina@lfspareparts.com)
- LATIN AMERICA AND THE CARRIBEANS**  
[www.lfrepuestos-horeca724.es](http://www.lfrepuestos-horeca724.es)  
[export@lfrepuestos.es](mailto:export@lfrepuestos.es)
- POLAND**  
[www.lfspareparts724.pl](http://www.lfspareparts724.pl)  
[info@lfspareparts.pl](mailto:info@lfspareparts.pl)
- SOUTH KOREA**  
[www.lfspareparts724.com](http://www.lfspareparts724.com)  
[fabio.doni@lfspareparts.com](mailto:fabio.doni@lfspareparts.com)
- TURKEY**  
[www.lfyedekparca724.com](http://www.lfyedekparca724.com)  
[export@lfspareparts.com](mailto:export@lfspareparts.com)