



# Spare parts for the professional sector: Commercial refrigeration



Suitable for:

# FOSTER



This catalogue is automatically generated.  
Therefore, the sequence of the items might  
not be always shown at best.  
Updates will be issued in case of additions  
and/or amendments.

*Suitable universal spare parts may not be included*

Rel. 2018-02151653





Suitable for:

# FOSTER



Suitable for:

## Axial motor fans

**3540016 MOTOR FAN EBM W1G200-EC91-45**  
 230Vac 50/60Hz 31W 0.24A 1500-2100rpm  
 ø 200 mm  
 with cable 450 mm  
 Energy saving



FOSTER 1626047

## Compressors and spare parts

**3070033 COMPRESSOR CUBIGEL MX18FBa CSR**  
 220/240V 50Hz  
 power 5/8 Hp, displacement 18.39 cc  
 gas R404a/R507 LBP



FOSTER 00-555681

**3070068 COMPRESSOR SECOP SC15G CSIR**  
 220/230V 50Hz  
 power 3/8 Hp - displacement 15.28 cc  
 gas R134a HMBP  
 104G8520-HST DANFOSS



FOSTER 00-556062

**3070095 COMPRESSOR TECUMSEH CAJ2432Z/R CSR**  
 220/240V 50Hz  
 Rotalock suction connection  
 power 3/4 Hp. displacement 18.3 cc  
 gas R404a/R507 LBP



FOSTER 00-554685

**3070098 COMPRESSOR TECUMSEH CAJ2464Z/R CSR**  
 220/240V 50Hz  
 Rotalock suction connection  
 power 1.5 Hp. displacement 34.4 cc  
 gas R404a/R507 LBP



FOSTER 16260210

## Drip trays for refrigeration

**5036666 DRIP TRAY**  
 dimensions 260x136x60 mm  
 for Refrigerated cupboard (FOSTER) - Series CS  
 Series EP - Series GS  
 for Refrigerated table (FOSTER) - Series CS  
 Series EP - Series EPREM - Series EPRO  
 Series PRO



FOSTER 15271004



## Electronic controllers

### 3445488 CONTROLLER CAREL PB00F0HA10

115/230V 50/60Hz  
depth 64 mm  
1 outlet relè 16A for compressor - faston 6,3 mm  
1 outlet relè 8A for defrosting - faston 6,3 mm  
1 outlet relè 8A for fans - faston 6,3 mm  
1 outlet relè 8A for aux /light - faston 6,3 mm  
2 NTC probe (not included)  
2 configurable digital inlets  
front size 167x36 mm  
mounting hole 138x29 mm  
for Display cabinet (FOSTER) FHG2L - FHG3L



FOSTER 16240051

### 5044936 CONTROLLER DISPLAY LAE FSC

oval 120x70 mm  
mounting hole 71x29 mm  
for Refrigerated cupboard (FOSTER) - Series PROB  
Series PROG - Series PROS - Series PSS  
for Refrigerated table (FOSTER) - Series PRO



FOSTER 00-554477

### 3445490 CONTROLLER DISPLAY LAE FST-FPC-02

315x67x depth 50 mm  
mounting hole 47x256 mm  
for Refrigerated cupboard (FOSTER) - Series EPREMG  
Series EPREMS - Series PREMG - Series PREMS  
for Refrigerated table (FOSTER) - Series EPREM  
Series PREM



FOSTER 00-556122

### 3445492 CONTROLLER DISPLAY LAE FST-FPH-DU2

dimensions 120x200 mm



FOSTER 00-556023

### 3445376 CONTROLLER ELIWELL ID PLUS 961

230V 50/60Hz  
1 relay output 2Hp for compressor  
1 selectable NTC/PTC/PT1000 probe (not included)  
1 programmable digital/temperature input  
pause defrosting  
TTL input for copy card connection  
front dimension 74x32xdepth 59 mm  
mounting hole 71x29 mm



FOSTER 16250407

### 7106476 CONTROLLER LAE AC1-5TS2RW-A

115-230V 50/60Hz  
1 outlet 12A OUT1  
1 outlet 7A OUT2  
1 probe PTC/NTC (not included)  
TTL  
mounting hole 71x29 mm  
dimension 77x35 x depth 70 mm



FOSTER 16250756



Suitable for:

# FOSTER



**3445235 CONTROLLER LAE AT2-5BS4E-AG**  
 230V 50/60Hz  
 1 relay output 16A for compressor  
 1 relay output 7A for defrosting  
 1 relay output 7A for fans  
 1 door microswitch input  
 2 selectable NTC/PTC probes (not included)  
 with buzzer and TTL output  
 front dimension 77x35xdepth 70 mm  
 mounting hole 71x29 mm



FOSTER 00-555848

FOSTER 00-556224

**7108437 CONTROLLER LAE FST-FD1-DU1**  
 140x66x17 mm  
 for Refrigerated cupboard (FOSTER) EP1440 - EP700



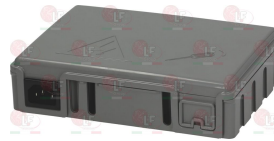
FOSTER 01-272806-01

**3445489 CONTROLLER LAE FST-FD1-DU2**  
 140x66x17 mm  
 for Refrigerated table (FOSTER) EP1/2 - EP1/3  
 EP1/4 - EP2/2 - EP2/3



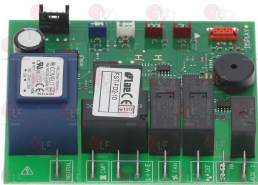
FOSTER 01-275719-01

**3445491 CONTROLLER LAE FST-FD1-PU1 WITH BOX**  
 230V 50Hz  
 relay outputs (compressor-defrosting-fan - aux)  
 2 probe inlets - micro door  
 for remote display connection  
 for Refrigerated cupboard (FOSTER) - Series EP  
 for Refrigerated table (FOSTER) - Series EP



FOSTER 16251036

**7108513 CONTROLLER LAE FST-FD2-10**  
 230V  
 relay outputs (compressor- defrosting - fan -aux)  
 connectors 2 probes - data display micro door  
 195x140x50 mm  
 for Refrigerated cupboard (FOSTER) - Series EPREMG  
 Series EPROG - Series FSL400  
 for Refrigerated table (FOSTER) - Series EPREM  
 Series EPRO



FOSTER 00-556242

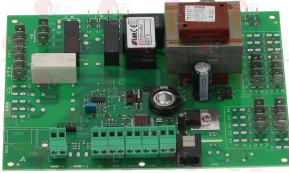
**5082101 CONTROLLER LAE FST-FD2-10 WITH BOX**  
 230V 50Hz  
 relay outputs (compressor - defrosting - fan -aux)  
 2 inputs probes- micro door -d.i.  
 connection for remote display



FOSTER 00-556302

Suitable for:

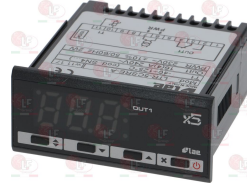
**7108498 CONTROLLER LAE FST-FPH-MB1**  
 dimensions 180x135 mm  
 for Refrigerated cupboard (FOSTER) FADPR2



FOSTER 01-254165-01

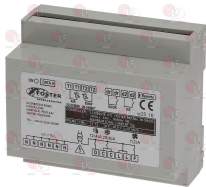
Suitable for:

**2102285 CONTROLLER LAE LTR-5CSRE-A**  
 230V 50/60Hz  
 1 relay output 16A  
 1 NTC probe (not included)  
 front dimension 77x35x 70 mm depth  
 mounting hole 71x29 mm



FOSTER 00-556186

**3445287 POWER MODULE LAE LF28B2S3E-1FS**  
 230V  
 1 relay output 20A for compressor  
 1 relay output 12A for defrosting  
 1 relay output 7A for fan  
 2 digital inputs (door microswitch)  
 2 NTC probes (not included)  
 for assembly on DIN slideway  
 serial outputs RS485  
 dimensions 105x90x55 mm



FOSTER 00-555920

FOSTER 00-556225

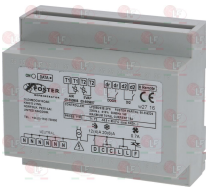
**3445288 REMOTE DISPLAY LAE LCD-5S**  
 with flat cable



FOSTER 00-555992

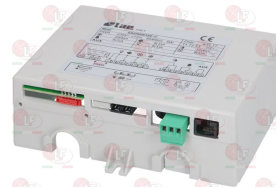
FOSTER 16240105

**3445312 POWER MODULE LAE LF28B2S3E-2FS**  
 230V 50/60Hz  
 1 relay output 20A for compressor  
 1 relay output 12A for defrosting  
 1 relay output 0.7A for electronic fan  
 2 digital inputs (door microswitch)  
 2 NTC probes (not included)  
 for assembly on DIN slideway  
 serial outputs RS485  
 dimensions 105x90x55 mm



FOSTER

**3445290 POWER MODULE LAE SSD90B35E-C**  
 230V 50/60Hz  
 1 relay output 20A for compressor  
 1 relay output 12A for defrosting  
 4 relay outputs 8A for fans, light, alarm  
 2 PTC probes (not included)  
 1 door microswitch digital input  
 RS485  
 dimension 165x125 mm



FOSTER 00-554987

FOSTER 00-554988

**3445288 REMOTE DISPLAY LAE LCD-5S**  
 with flat cable



FOSTER 00-555992

FOSTER 16240105





Suitable for:

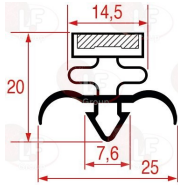
# FOSTER



Suitable for:

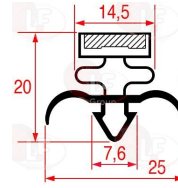
## Gaskets for refrigerators

**3186870 SNAP-IN GASKET 1023 LENGTH 2000 mm**



FOSTER

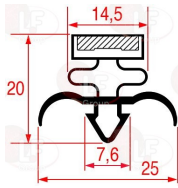
**5034247 SNAP-IN GASKET 1330x610 mm**



FOSTER L15211732

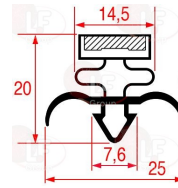
FOSTER 15211732

**5055362 SNAP-IN GASKET 1370x577 mm**



FOSTER 15210764

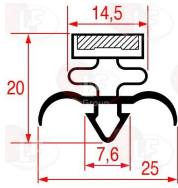
**5043769 SNAP-IN GASKET 1444x464 mm**  
for Refrigerated cupboard (FOSTER) SLIMLINE E606



FOSTER S210738

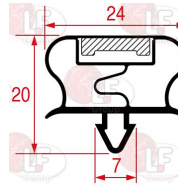
FOSTER 15210738

**7109884 SNAP-IN GASKET 1444x553 mm**



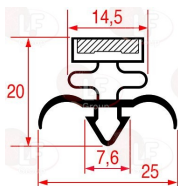
FOSTER 15210737

**5033827 SNAP-IN GASKET 1541x623 mm**



FOSTER 01-231709-01

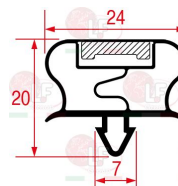
**3786641 SNAP-IN GASKET 1570x610 mm**



FOSTER F15211731

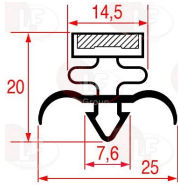
FOSTER 15211731

**7110870 SNAP-IN GASKET 1570x640 mm**  
for Refrigerated cupboard (FOSTER) - Series EP1440  
Series EP700



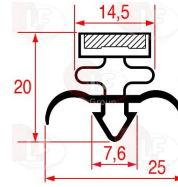
FOSTER 01-269568-01

**5055078 SNAP-IN GASKET 545x495 mm**  
for Refrigerated cupboard (FOSTER) LR110



FOSTER 15210779

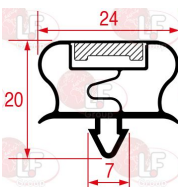
**5032948 SNAP-IN GASKET 638x425 mm**



FOSTER F15210775

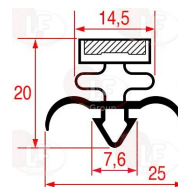
FOSTER 15210775

**5051818 SNAP-IN GASKET 640x405 mm**



FOSTER 01-231711-01

**5042773 SNAP-IN GASKET 640x525 mm**

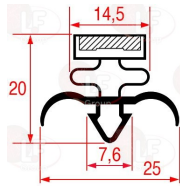


FOSTER 15211794



Suitable for:

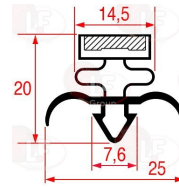
**5031060 SNAP-IN GASKET 643x410 mm**



FOSTER 15211775

Suitable for:

**5042259 SNAP-IN GASKET 643x611 mm**

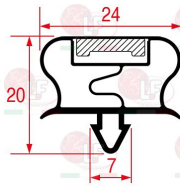


FOSTER F15211770

FOSTER 15211770

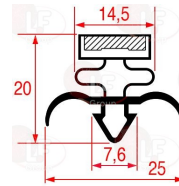
**7111137 SNAP-IN GASKET 656x522 mm**

for Refrigerated table (FOSTER) - Series FPS2  
Series FPS4 - Series FPS5  
for Refrigerated table (FOSTER) - Series FPS3



FOSTER 01-255146-01

**5042774 SNAP-IN GASKET 765x605 mm**



FOSTER 15211734

## Grids for oven

**3185972 GRID PLASTIC-COATED GN 2/1 650x530 mm**  
grey colour



FOSTER 15271430

## Guides

**7107863 SLIDEWAY FOR GRID RH-LH 579x24 mm**  
for Refrigerated cupboard (FOSTER) - Series EPREMG  
Series EPROG - Series EPSG - Series PREMG  
Series PROG - Series PSG  
for Refrigerated table (FOSTER) - Series EPREM  
Series PREM - Series PRO



FOSTER 00-745542-01

**3189063 SLIDEWAYS FOR GRID RH-LH 479x24 mm**  
for Refrigerated cupboard (FOSTER) - Series PREM  
Series PSS  
for Refrigerated table (FOSTER) - Series EP  
Series EPREM - Series EPRO - Series PREM  
Series PRO



FOSTER 00-745543-01



Suitable for:

# FOSTER



Suitable for:

## Handles

**3242914 HANDLE CHROMED 5210-25**  
length 251 mm  
distance between holes 222 mm  
with black insert



FOSTER 15230238

**3242916 HANDLE CHROMED 5210-40**  
length 402 mm  
distance between holes 376 mm  
with black insert



FOSTER 15230221

**5055979 HANDLE OF ALUMINIUM 384 mm**  
mounting distance 320 mm  
for Refrigerated table (FOSTER) - Series EPREM  
Series PREM



FOSTER 16230053

**3242782 HANDLE RECESSED PLASTIC BLACK 160 mm**  
for Refrigerated table (FOSTER) - Series EPRO  
Series FXC - Series XR



FOSTER 00-879830-01

## Heating elements

**3455532 HEATING ELEMENT OUTLET 230V 6W**  
610 mm length  
for Refrigerated cupboard (FOSTER) - Series CS  
Series EPREMMB - Series EPREMMG - Series EPRO  
Series EPSG - Series GS - Series PRO  
for Refrigerated table (FOSTER) - Series CBC  
Series CS - Series EP - Series EPREM - Series PREM  
Series PRO



FOSTER 00-556114

**7112454 HEATING ELEMENT 140W 230V**  
length 335 mm  
width 60 mm



FOSTER 15240023

**3455533 HEATING ELEMENT 150W 230V**  
300 mm length - 52 mm width  
for Refrigerated cupboard (FOSTER) LR120



FOSTER 01-250911-01

**5051583 HEATING ELEMENT 200W 230V**  
length 250 mm  
width 102 mm



FOSTER 15240625



Suitable for:

**3455542 HEATING ELEMENT 230V 1000W WITH KLIXON**  
1010 mm length - 150 mm width  
for Refrigerated cupboard (FOSTER) FXT1352L  
XR1300L



FOSTER 00-570007

Suitable for:

**3455535 HEATING ELEMENT 230V 140W**  
420 mm length - 70 mm width  
for Refrigerated table (FOSTER) - Series CS  
Series EPREM - Series EPRO - Series F - Series GSC  
Series PREM - Series PRO - Series PROC



FOSTER 15240022

**3455538 HEATING ELEMENT 230V 140W**  
495 mm length - 70 mm width  
for Refrigerated cupboard (FOSTER) - Series GS1131  
Series GS2101



FOSTER 15240021

**3455540 HEATING ELEMENT 230V 200W**  
655 mm length - 55 mm width



FOSTER 01-251150-01

**3455537 HEATING ELEMENT 230V 400W**  
520 mm length - 85 mm width  
for Refrigerated cupboard (FOSTER) CS600LT  
GS1131 - GS2101 - GS501 - PRO600LT - PSB600LT  
PS600LT



FOSTER 00-838885-01

FOSTER 15240005

**3455539 HEATING ELEMENT 230V 600W**  
530 mm length - 140 mm width  
for Refrigerated cupboard (FOSTER) EPREMG300/300HL  
EPROG300/300HH - EPROG300/300HL - EPROG600LU  
EPROG600MU - EPSG300/300HL - FXT602L  
PROG600LU - PROG600MU - XR600L



FOSTER 00-570008

**3455536 HEATING ELEMENT 230V 90W**  
200 mm length - 104 mm width  
for Refrigerated table (FOSTER) PMC1HFT - PMC1HRT



FOSTER 15240624

**3455534 HEATING ELEMENT 500W 230V WITH KLIXON**  
425 mm length - 135 mm width  
for Refrigerated cupboard (FOSTER) FSL400  
FXT1350L-A - FXT600L-A



FOSTER 00-570009



Suitable for:

# FOSTER



Suitable for:

## Hinges, catches and accessories

**3053629 BLACK PIN SQUARE BUSHING**



FOSTER 15230510

**3053621 BUSHING PIN**



FOSTER 15230505

**3053363 CHROME-PLATED HINGE 309**  
length 130 mm - mounting distance 50 mm



FOSTER 15230461

**5059728 HINGE BUSHING  $\varnothing$  16/11x8x13 mm**  
for Refrigerated cupboard (FOSTER) - Series FSL400  
Series FSL800  
for Refrigerated table (FOSTER) - Series CS  
Series EP - Series EPREM - Series EPRO



FOSTER 15260202

**3053618 HINGE 1535**  
mounting distance 25.4 mm



FOSTER 15230498

**3053619 HINGE 1537**  
mounting distance 24.5 mm



FOSTER 15230501

**3053621 BUSHING PIN**



FOSTER 15230505

**3053623 NUT**



FOSTER 15230507

**3053622 SLEEVE ADAPTER**



FOSTER 15230506



Suitable for:

**3053620** **THREADED PIN**



FOSTER 15230504

# FOSTER



Suitable for:

**3053628** **HINGE 1539 UPPER LH LOWER RH**



FOSTER 15230509

**3053623** **NUT**



FOSTER 15230507

**3053620** **THREADED PIN**



FOSTER 15230504

**3053627** **HINGE 1539 UPPER RH LOWER LH**



FOSTER 15230508

**3053623** **NUT**



FOSTER 15230507

**3053629** **BLACK PIN SQUARE BUSHING**



FOSTER 15230510

**3053622** **SLEEVE ADAPTER**



FOSTER 15230506

**3053629** **BLACK PIN SQUARE BUSHING**



FOSTER 15230510

**3053622** **SLEEVE ADAPTER**



FOSTER 15230506



Suitable for:

### 3053620 THREADED PIN



FOSTER 15230504

# FOSTER



Suitable for:

**3053668 LOWER HINGE**  
pin  $\varnothing$  8x14 mm  
for Refrigerated cupboard (FOSTER) LR135F - LR135S  
PS135HU - PS135LU - PS170HU - PS170LU



FOSTER 15230527

**3053676 LOWER HINGE BLACK**  
pin  $\varnothing$  8x14 mm  
for Refrigerated cupboard (FOSTER) - Series HR  
Series LR



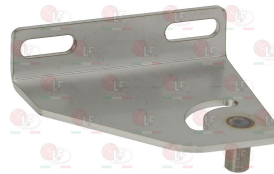
FOSTER 01-231992-01

**3053662 LOWER HINGE LH**  
pin  $\varnothing$  8x14 mm  
for Refrigerated table (FOSTER) FXC1/2H - FXC1/3H  
XR2H - XR3H



FOSTER 01-259757-01

**3053665 LOWER HINGE LH**  
pin  $\varnothing$  8x14 mm  
for Refrigerated table (FOSTER) - Series EP  
Series EPRO - Series PRO



FOSTER 00-879928-01

**3053673 LOWER HINGE LH**  
pin  $\varnothing$  8x14 mm  
for Refrigerated table (FOSTER) - Series CS  
Series PMC - Series PROC



FOSTER 15230521

**3053663 LOWER HINGE RH**  
pin  $\varnothing$  8x14 mm  
for Refrigerated table (FOSTER) FXC1/2H - FXC1/3H  
XR2H - XR3H



FOSTER 01-259758-01

**3053667 LOWER HINGE RH**  
pin  $\varnothing$  8x14 mm  
for Refrigerated table (FOSTER) - Series EP  
Series EPRO - Series PRO



FOSTER 00-879929-01

**3053672 LOWER HINGE RH**  
pin  $\varnothing$  8x14 mm  
for Refrigerated table (FOSTER) - Series CS  
Series PMC - Series PROC



FOSTER 15230520



Suitable for:

Suitable for:

**3053669 LOWER HINGE 52.5x70x22.5 mm**  
 pin  $\varnothing$  9x12 mm  
 for Refrigerated cupboard (FOSTER) - Series FSL400  
 Series FSL800



FOSTER 01-251908-01

**3053623 NUT**



FOSTER 15230507

**3053622 SLEEVE ADAPTER**



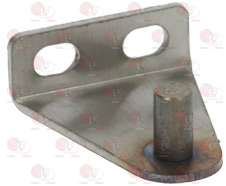
FOSTER 15230506

**3053620 THREADED PIN**



FOSTER 15230504

**3053674 UPPER HINGE**  
 pin  $\varnothing$  8x14 mm  
 for Refrigerated cupboard (FOSTER) - Series HR  
 Series LR - Series PS13 - Series PS17



FOSTER 15230526

**3053664 UPPER HINGE LH**  
 pin  $\varnothing$  8x14 mm  
 for Refrigerated table (FOSTER) - Series EP  
 Series EPRO - Series PRO



FOSTER 00-879930-01

**3053671 UPPER HINGE LH**  
 pin  $\varnothing$  4.8x14 mm  
 for Refrigerated table (FOSTER) - Series CS  
 Series PMC - Series PROC



FOSTER 15230523

**3053666 UPPER HINGE RH**  
 pin  $\varnothing$  8x14 mm  
 for Refrigerated table (FOSTER) - Series EP  
 Series EPRO - Series PRO



FOSTER 00-879931-01

**3053670 UPPER HINGE RH**  
 pin  $\varnothing$  4.8x14 mm  
 for Refrigerated table (FOSTER) - Series CS  
 Series PMC - Series PROC



FOSTER 15230522

**3053675 UPPER HINGE 52.5x70x22.5 mm**  
 pin  $\varnothing$  9x12 mm  
 for Refrigerated cupboard (FOSTER) - Series FSL400  
 Series FSL800



FOSTER 01-251917-01



Suitable for:

# FOSTER



Suitable for:

## Locks

**5059139 DOOR LOCK COMPLETE**  
cylinder  $\varnothing$  16.5x45 mm



FOSTER 16230046

**5058782 LOCKING KIT COMPLETE**



FOSTER ML-120158

## Microswitches, magnetic

**3803096 MICROSWITCH MAGNETIC REED**  
3000 mm cable length  
 $\varnothing$  28 mm



FOSTER 16240122

**3803098 MICROSWITCH REED A00**  
 $\varnothing$  20-26 mm  
for Refrigerated cupboard (FOSTER) - Series GS



FOSTER 15243607

## Microswitches, mechanical

**5061167 MICRO SWITCH CHERRY E65**  
1-NO 1-NC 16A 125/250V  
white colour



FOSTER 15243537

**3240855 MICROSWITCH ARCOLECTRIC C3006 SX**  
1-NO 0.3A 250V  
black colour



FOSTER 16250246

**3803099 MICROSWITCH ARCOLECTRIC HK3141CA**  
1-NC 1-NO 5A 250V  
colour: white  
for Refrigerated cupboard (FOSTER) XR600L



FOSTER 00-556012





## Refrigerators evaporators

- 7107196 EVAPORATOR LUVATA D86593 8T 3R**  
 552x200x67 mm  
 for Refrigerated cupboard (FOSTER) EPREMB600  
 EPREMG500 - EPREMG600 - EPREMS400 - EPROB600  
 EPROG500 - EPROG600 - EPROS400 - EPRO20  
 EPSG500 - EPSG600 - PREMB600 - PREMG500  
 PREMG600 - PREMS400 - PREM20 - PROB600  
 PROG600 - PROS400 - PSG500 - PSG600



FOSTER 00-878253-02

## Relays

- 3351602 POWER RELAY FINDER 65.31.8.230.0300**  
 230V 50/60Hz  
 1 contact NO 30A



FOSTER 16250408

- 3351120 POWER RELAY OMRON G7L-1A-T**  
 230V 50Hz  
 1 contact NO 25A



FOSTER 15490420

## Solenoid valves

- 3120619 SOLENOID VALVE SAGInoMYA NEV-603DXF**  
 elbow -  $\varnothing$  8 mm pipe  
 5.8 mm passthrough hole  
 with coil 230V 50/60Hz 7W



FOSTER 15451251

## Switches

- 3319944 BIPOLAR SWITCH GREEN 16A 250V**  
 16(4)A 250V - max. temperature 120°C  
 with indicator light - silk screen printing 0 - I  
 mounting hole 22x30 mm



FOSTER 15243565

- 3319815 SWITCH 1-POLE**  
 16(4)A 250V  
 connector terminal 6.35x0.8 mm



FOSTER 16250404



Suitable for:

# FOSTER



Suitable for:

**3319816 SWITCH 1-POLE BLACK**  
 10(6)A 250V  
 21x15 mm front dimensions  
 4.8x0.8 terminals  
 13x20 mm mounting hole



FOSTER 00-554774

## Tangential and radial motor fans

**3526239 TANGENTIAL FAN 180 mm LEFT W/CABLE**  
 230V 50/60Hz - ø 60 mm  
 operating temperature -30°+60°C  
 TFL180/20-14CIC



FOSTER 1625027

**3526150 TANGENTIAL FAN 180 mm LH**  
 25W 230V 50/60Hz - ø 60 mm  
 operating temperature -30°+100°C  
 for Refrigerated cupboard (FOSTER) WL400H



FOSTER 4022143

**3526204 TANGENTIAL FAN 180 mm RH W/CABLE**  
 230V 50/60Hz 34W 1800rpm 140 m3/h class F  
 ø 60 mm TFR180/20-14CSN - TAS18B-208  
 for Refrigerated cupboard (FOSTER) FVINO400HW  
 FW400H



FOSTER 1625028

**3805040 TANGENTIAL FAN 300 mm RH**  
 230V 50Hz - ø 30 mm  
 FERGAS 50575



FOSTER 00-555543

## Thermostats

**3444162 THERMOSTAT DEFROSTING END NGT 12**  
 60 mm cable length  
 fastening bracket n.5 (1/2")



FOSTER 15243602

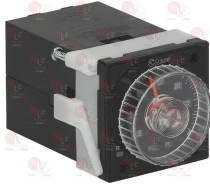
**3744184 THERMOSTAT END OF DEFROSTING NGT 12**  
 60 mm cable length  
 with fastening bracket n.3 (3/8")



FOSTER 15243603

**Timers****3446248 TIMER CROUZET TMR48U**

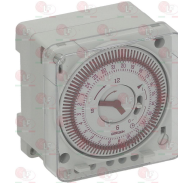
8 pin  
dimension 48x48x tot. depth 96.8 mm  
mounting hole 45x45 mm



FOSTER 16251041

**3446247 TIMER GRASSLIN TACTIC 111.1**

230V 50Hz  
1 contact 16(8)A 250V  
min. programming interval 15 min  
dimension 72x80x55 mm  
fastening on DIN slide



FOSTER 00-554018

The data herewith contained may change without notice and LF SpA cannot be held responsible for possible errors stated or resulting by the use of this document. All rights reserved. No part of this publication may be reproduced without written permission by LF SpA.



## Distributing Components, Spare Parts & Accessories in original quality worldwide

- 
- LF SpA HEADQUARTERS**  
via Voltri, 80 - 47522 Cesena (FC) ITALY  
Tel. +39 0547 34 11 11 - Fax +39 0547 34 11 10  
[www.lfircambi724.it](http://www.lfircambi724.it) - [info@lfircambi.it](mailto:info@lfircambi.it)  
Export Dept. Tel. +39 0547 34 11 50 - Fax +39 0547 34 11 55  
[www.lfspareparts724.com](http://www.lfspareparts724.com) - [export@lfspareparts.com](mailto:export@lfspareparts.com)
- LF SpA HOUSEHOLD COMPONENTS DIVISION**  
Via Padriciano, 99 - AREA Science Park - 34149 Trieste (TS) ITALY  
Tel. +39 0547 34 12 42 - Fax +39 0547 34 12 48  
[www.lfspareparts724.com](http://www.lfspareparts724.com) - [info@lfspareparts.com](mailto:info@lfspareparts.com)
- EPGC Sas FRANCE**  
13, Rue des Forts - 59960 Neuville en Ferrain  
Tel. +33 (0)3 20 25 06 21 - Fax +33 (0)3 20 25 34 12  
[www.epgc.com](http://www.epgc.com) - [epgc@epgc.com](mailto:epgc@epgc.com)
- LF GmbH GERMANY**  
Junkersstrasse, 3 - D-82178 Puchheim - München  
Tel. +49 89 89 45 78 66 - Fax +49 89 89 45 78 88  
[www.lfersatzteile724.de](http://www.lfersatzteile724.de) - [info@lfersatzteile.de](mailto:info@lfersatzteile.de)
- LF China REPUBLIC OF CHINA**  
Room 403, No.2, Huadu Mansion, Lane 422, Huanghua Rd.  
Minhang Dist. - 201103 Shanghai  
Tel. +86 (0)21 33 53 66 31 - Fax +86 (0)21 33 53 66 32  
[www.lfspareparts724.com](http://www.lfspareparts724.com) - [china@lfspareparts.com](mailto:china@lfspareparts.com)
- OOO LF RUSSIAN FEDERATION**  
Ul. Anatoliya Zhivova, 8 - office 1 - 123100 Moscow  
Tel./Fax +7 495 725 26 53  
[www.lfspareparts724.ru](http://www.lfspareparts724.ru) - [info@lfspareparts.ru](mailto:info@lfspareparts.ru)
- LF Repuestos Horeca S.L.U. SPAIN**  
Poligono Industrial Carpetania - C/Miguel Faraday, 8 - 28906 Getafe  
Tel. +34 91 477 91 00 - Fax +34 91 477 90 81  
[www.lfrepuestos-horeca724.es](http://www.lfrepuestos-horeca724.es) - [info@lfrepuestos.es](mailto:info@lfrepuestos.es)
- LF Scandinavia Aps - LF Spareparts S.p.A. DENMARK**  
Nupark, 51 - 7500 Holstebro  
Tel. +45 70 70 77 33  
[www.lfspareparts724.dk](http://www.lfspareparts724.dk) - [denmark@lfspareparts.dk](mailto:denmark@lfspareparts.dk)
- LF SpA Cesena (IT) Swiss Branch Steinhausen SWITZERLAND**  
Sennweidstrasse, 45 - CH-6312 Steinhausen  
Tel. +41 (0)41 760 15 80/1 - Fax +41 (0)41 760 15 85  
[www.lfersatzteile724.ch](http://www.lfersatzteile724.ch) - [info@lfersatzteile.ch](mailto:info@lfersatzteile.ch)
- LF Spare Parts Ltd. UNITED KINGDOM**  
A10a Lakeside Business Park, Broadway Lane  
South Cerney, Gloucestershire GL7 5XL  
Tel. +44 (0)1285 86 16 25 - Fax +44 (0)1285 86 39 49  
[www.lfspareparts724.co.uk](http://www.lfspareparts724.co.uk) - [info@lfspareparts.co.uk](mailto:info@lfspareparts.co.uk)
- LF Central Est Europe S.r.o. CZECH REPUBLIC**  
Antala Staska 1859/34  
14000 Praha 4 - KRC  
Tel. +420 730 156 910  
[www.lfspareparts724.cz](http://www.lfspareparts724.cz) - [info@lfspareparts.cz](mailto:info@lfspareparts.cz)
- LF SPARE PARTS INC. USA**  
Legal address:  
155 Office Plaza Dr - Suite A - Tallahassee, FL 32301  
Business/Mailing address:  
1100 South Tower, 225 Peachtree St., N.E. - Atlanta, GA 30303, USA  
Tel. +1-404-525-2600 - Fax +1-404-586-3528  
[www.lfspareparts724.us](http://www.lfspareparts724.us) - [info@lfspareparts.us](mailto:info@lfspareparts.us)  
Tel. West Coast and Midwest: 206-349-1525 Sauro  
Tel. East Coast and the Caribbean: 786-817-1764 Luis
- 
- AUSTRALIA AND NEW ZEALAND**  
[www.lfspareparts724.com](http://www.lfspareparts724.com)  
[andrea.calvio@lfspareparts.com](mailto:andrea.calvio@lfspareparts.com)
- AUSTRIA**  
[www.lfersatzteile724.at](http://www.lfersatzteile724.at)  
[info@lfersatzteile.at](mailto:info@lfersatzteile.at)
- BALKAN COUNTRIES**  
[www.lfspareparts724.com](http://www.lfspareparts724.com)  
[matija.ramov@lfspareparts.com](mailto:matija.ramov@lfspareparts.com)
- BALTIC COUNTRIES**  
[www.lfspareparts724.com](http://www.lfspareparts724.com)  
[inara.silina@lfspareparts.com](mailto:inara.silina@lfspareparts.com)
- LATIN AMERICA AND THE CARRIBEANS**  
[www.lfrepuestos-horeca724.es](http://www.lfrepuestos-horeca724.es)  
[export@lfrepuestos.es](mailto:export@lfrepuestos.es)
- POLAND**  
[www.lfspareparts724.pl](http://www.lfspareparts724.pl)  
[info@lfspareparts.pl](mailto:info@lfspareparts.pl)
- SOUTH KOREA**  
[www.lfspareparts724.com](http://www.lfspareparts724.com)  
[fabio.doni@lfspareparts.com](mailto:fabio.doni@lfspareparts.com)
- TURKEY**  
[www.lfyedekparca724.com](http://www.lfyedekparca724.com)  
[export@lfspareparts.com](mailto:export@lfspareparts.com)