



Spare parts for the professional sector: Warewashing equipment



Suitable for:

PROJECT SYSTEMS



This catalogue is automatically generated.
Therefore, the sequence of the items might
not be always shown at best.
Updates will be issued in case of additions
and/or amendments.
Suitable universal spare parts may not be included

Rel. 2018-02261333





Suitable for:

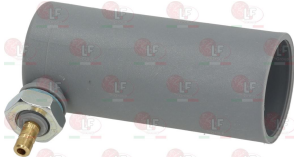
PROJECT SYSTEMS



Suitable for:

Air traps

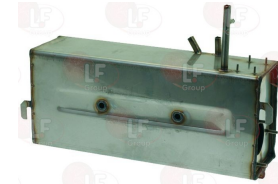
- 3060039 AIR CHAMBER COMPLETE \varnothing 39x90 mm**
 hose end fitting \varnothing 6 mm
 complete with flat gasket and fastening nut
 for Dishwasher (PROJECT SYSTEMS) E50
 for Glasswasher/Cupwasher (PROJECT SYSTEMS) E35
 E40
 for Glasswasher/Cupwasher (PROJECT SYSTEMS) S40



PROJECT SYSTEMS 20100

Boilers

- 3024084 BOILER 350x150x100 mm**
 for Dishwasher (PROJECT SYSTEMS) E60 - G50 - S50
 T50 - T80



PROJECT SYSTEMS 80930

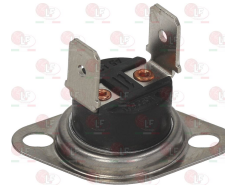
Contact thermostats

- 3443029 CONTACT THERMOSTAT 60°C**
 for tank
 for Dishwasher (PROJECT SYSTEMS) E50 - P500 - S50
 T50 - T80
 for Glasswasher/Cupwasher (PROJECT SYSTEMS) E35
 E40 - P350 - P350S - P400 - S35 - S40 - T35
 T35S - T40



PROJECT SYSTEMS 30518

- 3444606 CONTACT THERMOSTAT 80°C**
 safety thermostat - for boiler
 for Glasswasher/Cupwasher (PROJECT SYSTEMS) E35
 E40



PROJECT SYSTEMS 30519

- 3443028 SAFETY THERMOSTAT 120°C**
 with manual reset
 per BOILER
 for Dishwasher (PROJECT SYSTEMS) E50
 for Glasswasher/Cupwasher (PROJECT SYSTEMS) E35
 E40



PROJECT SYSTEMS 30517

Contactors

- 3351218 CONTACTOR AEG LS7K 18A 230V 7.5Kw**
 coil 230V 50/60Hz
 3 normally open contacts
 1 normally open auxiliary contact



PROJECT SYSTEMS 30525

- 3446556 CONTACTOR LOVATO BG0910A**
 coil 9A 230V 50/60Hz 4Kw
 3 normally open contacts
 1 normally open auxiliary contact



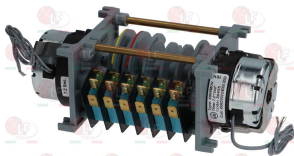
PROJECT SYSTEMS 30520

- 3446227 AUXILIARY CONTACT LOVATO G218**
 10A
 1 contact NO
 1 contact NC



Controllers and changeover switches

- 3322202 CONTROLLER 4906DV 6 CAMS**
 240 seconds cycle
 230V 50/60Hz
 for Dishwasher (PROJECT SYSTEMS) S100



PROJECT SYSTEMS 30455

- 3322179 TIMER 11805M1 5 CAMS**
 cycle 120 seconds
 230V 50/60Hz
 for Dishwasher (PROJECT SYSTEMS) E50
 for Glasswasher/Cupwasher (PROJECT SYSTEMS) E35
 E40 - P350 - P400

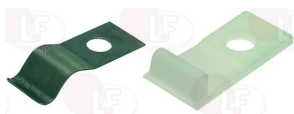


PROJECT SYSTEMS 30450

PROJECT SYSTEMS 30460

Door catches

- 3398042 DOOR LOCKING SPRING**
 for Dishwasher (PROJECT SYSTEMS) E50 - S100 - S50
 S80
 for Glasswasher/Cupwasher (PROJECT SYSTEMS) E35
 E40 - S35 - S40



PROJECT SYSTEMS 20132



Drain hoses

- 3450099 DRAIN HOSE \varnothing 24x1800 mm**
 elbow hose internal \varnothing 29 mm
 straight hose internal \varnothing 21 mm
 max temperature 90°C



PROJECT SYSTEMS 30770

PROJECT SYSTEMS 600145

Drain plugs

- 3448219 OVERFLOW PIPE \varnothing 25x128 mm**
 in plastic
 for Glasswasher/Cupwasher (PROJECT SYSTEMS) E35
 E40



PROJECT SYSTEMS 60790

PROJECT SYSTEMS 60791

- 3316054 CURVED DRAIN ASSEMBLY 1"**
 for Dishwasher (PROJECT SYSTEMS) E35 - E40 - E50



PROJECT SYSTEMS 20090

- 3316041 GASKET 1" \varnothing 44x32x3 mm**
 for Dishwasher (PROJECT SYSTEMS) E50
 for Glasswasher/Cupwasher (PROJECT SYSTEMS) E35
 E40



PROJECT SYSTEMS 19000

- 3316042 STAINLESS STEEL NUT \varnothing 1"**
 for Dishwasher (PROJECT SYSTEMS) E50
 for Glasswasher/Cupwasher (PROJECT SYSTEMS) E35
 E40



PROJECT SYSTEMS 17060

PROJECT SYSTEMS 17060INOX

- 3448175 OVERFLOW PIPE \varnothing 25x140 mm**
 in plastic
 for Dishwasher (PROJECT SYSTEMS) E50
 for Glasswasher/Cupwasher (PROJECT SYSTEMS) T35
 T35S - T40



PROJECT SYSTEMS 80790

Drain pumps

3122199 DRAIN PUMP ASKOLL KIT 2 BRACKETS
40W 230V 50Hz
inlet \varnothing external 30 mm - outlet \varnothing external 22 mm



PROJECT SYSTEMS 30660

3122840 DRAIN PUMP GRE
inlet external \varnothing 30 mm - outlet external \varnothing 30 mm
230V 50Hz 34W
faston electrical connection



PROJECT SYSTEMS 30661

Electric pumps

3122234 ELECTRIC PUMP LGB ZF110SX 0.30HP
inlet external \varnothing 30 mm - outlet external \varnothing 30 mm
0.23kW 230V 50Hz - Rpm 2800
capacitor 8 μ F
for Glasswasher/Cupwasher (PROJECT SYSTEMS) E40



PROJECT SYSTEMS 40647

3068014 CAPACITOR DUCATI ENERGIA 8 μ F
450V 50/60Hz
operating temperature -25 +85°C
lead connection 6.35x0.8 mm
 \varnothing 32xh55 mm



PROJECT SYSTEMS 40645

3068079 CAPACITOR ELECTRICAL 8 μ F
450V 50/60Hz - \varnothing 30xh71 mm



PROJECT SYSTEMS 40645

3122467 PUMP HOUSING LGB ZA/ZF110SX
inlet external \varnothing 30 mm - outlet external \varnothing 30 mm



PROJECT SYSTEMS 500530

3122198 ELECTRIC PUMP LGB ZF119DX 0.27HP
inlet external \varnothing 28 mm - outlet external \varnothing 28 mm
0.20kW 230V 50Hz - Rpm 2800
capacitor 5 μ F
for Glasswasher/Cupwasher (PROJECT SYSTEMS) E35



PROJECT SYSTEMS 60650

3068008 CAPACITOR DUCATI ENERGIA 5 μ F
450V 50/60Hz
operating temperature -25 +85°C
lead connection 6.35x0.8 mm
 \varnothing 28xh55 mm

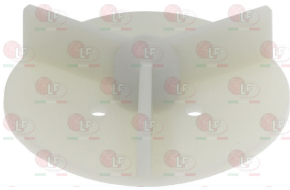


PROJECT SYSTEMS 30645



Suitable for:

3122378 **IMPELLER LGB ZF130/131RH ø 73 mm**
threaded connection



PROJECT SYSTEMS 500510

1186237 **O-RING 03300 EPDM**
ring thickness 2.62 mm - internal ø 75.87 mm



PROJECT SYSTEMS 500595

3122258 **ELECTRIC PUMP LGB ZF210SX 0.89HP**
inlet external ø 30 mm - outlet external ø 30 mm
0.66kW 230V 50Hz - Rpm 2800
capacitor 12.5 µF
for Dishwasher (PROJECT SYSTEMS) E50
for Dishwasher (PROJECT SYSTEMS) T120



PROJECT SYSTEMS 50650

3068081 **CAPACITOR ELECTRICAL 12.5µF**
450V 50/60Hz - ø 35xh71 mm



PROJECT SYSTEMS 50645

3122294 **MECHANICAL SEAL FOR SHAFT ø 12 mm**
metal seal internal ø 11 mm - external ø 24 mm
height 15.5 mm
back. element internal ø 14 mm - external ø 26 mm
height 5.5 mm



PROJECT SYSTEMS 500590

PROJECT SYSTEMS



Suitable for:

3122621 **MECHANICAL SEAL FOR SHAFT ø 13 mm**
metal seal internal ø 12 mm - external ø 24 mm
height 15 mm
back. element internal ø 14 mm - external ø 26 mm
height 8 mm



PROJECT SYSTEMS 500593

3068019 **CAPACITOR DUCATI ENERGIA 12,5µF**
450V 50/60Hz
operating temperature -25 +85°C
lead connection 6.35x0.8 mm
ø 36xh70 mm



5019844 **IMPELLER LGB ZF210SX ø 103 mm**
for Dishwasher (PROJECT SYSTEMS) E50



PROJECT SYSTEMS 500570

Electric pumps for pressure increase

3122738 ELECTRIC PUMP LGB PS45DX 0.50HP
inlet \varnothing 3/8" F - outlet \varnothing 3/8" F
0.50HP 230V 50Hz - capacitor 8 μ F
for pressure increase



PROJECT SYSTEMS PSV45

3068079 CAPACITOR ELECTRICAL 8 μ F
450V 50/60Hz - \varnothing 30xh71 mm



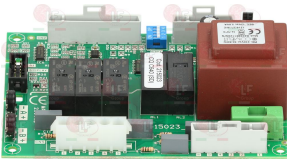
PROJECT SYSTEMS 40645

3349347 NICHEL-PL.HOSE-END FITTING \varnothing 3/8" M \varnothing 12



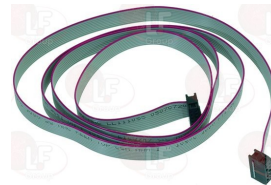
Electronic boards

3390034 CIRCUIT BOARD
without EPROM
dimensione 135x100 mm



PROJECT SYSTEMS CT215023

6041523 CABLE FLAT 10-POLE 1200 m m



3390194 CABLE FLAT 10-POLE 3100 m m



5028103 CONNECTOR 5-POLE



3319250 FLAT CABLES 10 POLES 2300 m m



3390088 MICROPROCESSOR GET.5 NIAGARA-RIVER



3390035 MICROPROCESSOR GET.5 EB



5039672 MICROPROCESSOR GET5300



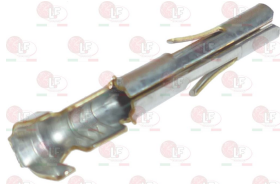


Suitable for:

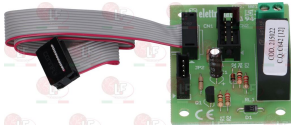
5009306 MICROPROCESSOR U61E



5037825 SPIKE FOR CONNECTOR (GET5)



3390191 SUPPLEMENTARY CIRCUIT BOARD



PROJECT SYSTEMS CT215022

PROJECT SYSTEMS



Suitable for:

3390036 SET OF 2 TEMPERATURE PROBES GET-5

bulb \varnothing 5x30 mm
length 350 mm
for tank and boiler



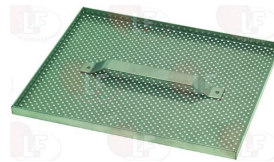
Filters

3160154 PUMP FILTER COMPLETE \varnothing 80 mm
coupling 25 mm
for Glasswasher/Cupwasher (PROJECT SYSTEMS) E35
E40



PROJECT SYSTEMS 15905

3160180 TANK FILTER STAINLESS STEEL 265x215 mm
for Dishwasher (PROJECT SYSTEMS) E50



PROJECT SYSTEMS 800010

PROJECT SYSTEMS 80010

Heating elements

3355635 HEATING ELEMENT FOR BOILER 4000W 230/400
 immersed length 270 mm
 external \varnothing flange 63 mm - with probe receptacle
 complete with O-ring \varnothing 58 mm (3186013)
 nut (3528232) and washer (3528238) on request
 for Dishwasher (PROJECT SYSTEMS) E50 - S100 - S50
 T50 - T80
 for Dishwasher hood type (PROJECT SYSTEMS) T150
 T155 - T255
 for Glasswasher/Cupwasher (PROJECT SYSTEMS) P350
 P350S - P400



PROJECT SYSTEMS 30640

3355636 HEATING ELEMENT FOR BOILER 6000W 230/400
 immersed length 280 mm
 external \varnothing flange 63 mm - with probe receptacle
 complete with O-ring \varnothing 58 mm (3186013)
 nut (3528232) and washer (3528238) on request
 for Dishwasher (PROJECT SYSTEMS) E50 - P500 - S100
 S50 - S80 - T50 - T80
 for Dishwasher hood type (PROJECT SYSTEMS) T150
 T155 - T255



PROJECT SYSTEMS 50640

3355637 HEATING ELEMENT FOR BOILER 8000W 230/400
 immersed length 385 mm
 external \varnothing flange 63 mm - with probe receptacle
 complete with O-ring \varnothing 58 mm (3186013)
 nut (3528232) and washer (3528238) on request
 for Dishwasher (PROJECT SYSTEMS) E50



PROJECT SYSTEMS 50644

3455367 HEATING ELEMENT PTC 4A 220V
 dimensions 75x42 mm - 275°C



PROJECT SYSTEMS PTC02

3355021 HEATING ELEMENT TANK 2000W 230V
 immersed depth 265 mm
 width 35 mm - height 30 mm
 fittings \varnothing 10 mm



PROJECT SYSTEMS

1186304 O-RING 0112 EPDM
 ring thickness 2.62 mm - internal \varnothing 9.92 mm



3355634 HEATING ELEMENT 1500W 230V
 immersed length 145 mm
 width 50 mm - connections \varnothing 14 mm
 for Dishwasher (PROJECT SYSTEMS) E50 - S100 - S50
 S80 - T50 - T80
 for Glasswasher/Cupwasher (PROJECT SYSTEMS) S35
 S40 - T35 - T40
 for Glasswasher/Cupwasher (PROJECT SYSTEMS) E35



PROJECT SYSTEMS 60645

1186223 O-RING 02056 EPDM
 ring thickness 1.78 mm - internal \varnothing 14.00 mm



PROJECT SYSTEMS 18030



Suitable for:

Suitable for:

- 3755002 HEATING ELEMENT 3000W 230V**
immersed length 260 mm
flange external \varnothing 63 mm - bulbholder sheathing
complete with O-ring \varnothing 58 mm (3186013)
nut (3528232) and washer (3528238) on request
SAB50
for Dishwasher (PROJECT SYSTEMS) E50 - S50 - T50
T80
for Glasswasher/Cupwasher (PROJECT SYSTEMS) E35
E40 - S35 - S40 - T35 - T40



PROJECT SYSTEMS 60640N

Hose-end fittings

- 3743030 WASH FITTING Y-SHAPED \varnothing 3/4"**
for Dishwasher (PROJECT SYSTEMS) E50



PROJECT SYSTEMS 16005

Indicator lights

- 3221125 INDICATOR LIGHT GREEN TEMPERATURE 230V**
mounting hole 24x36 mm
for Dishwasher (PROJECT SYSTEMS) E50



PROJECT SYSTEMS 30432

- 3221110 INDICATOR LIGHT GREEN 230V**
 \varnothing head 7 mm - \varnothing hole 6 mm - 120°C
wire connection length 210 mm



PROJECT SYSTEMS 30435

- 3221045 LAMP CAP TAPERED CONICAL GREEN SU3**
mounting hole \varnothing 6 mm - head \varnothing 7 mm



Suitable for:

Suitable for:

- 3221129 INDICATOR LIGHT RED TEMPERATURE 230V**
 mounting hole 24x36 mm
 for Glasswasher/Cupwasher (PROJECT SYSTEMS) E35
 E40



PROJECT SYSTEMS 30431

- 3221133 INDICATOR LIGHT RED 230V**
 ø head 7 mm - ø hole 6 mm - 120°C
 cable pvc length 210 mm



PROJECT SYSTEMS 30436

- 3221594 LAMP CAP TAPERED CONICAL RED SU3**
 mounting hole ø 6 mm - head ø 7 mm



- 3221687 LAMP CAP TAPERED CONICAL WHITE SU3**



Inlet hoses

- 3449326 INLET ELBOW HOSE ø 3/4" FF 1000 mm**
 thermoplastic hose ø 13x19 mm
 nylon fittings ø 3/4"F with gaskets
 max temperature 90°C
 max pressure 10 bar
 with WRAS approval



PROJECT SYSTEMS CVNR08

- 3449064 INLET ELBOW HOSE ø 3/4" FF 2000 mm**
 EPDM hose covered in s.steel/nylon braiding ø 14mm
 nylon fittings ø 3/4"F with gaskets
 max temperature 90°C
 operating temperature -5/+80°C
 max pressure 15 bar
 operating pressure 10 bar



PROJECT SYSTEMS 30760

PROJECT SYSTEMS 600005



Suitable for:

PROJECT SYSTEMS

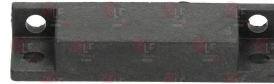


Suitable for:

Microswitches, magnetic

3240204 MAGNETIC MICROSWITCH E5301C
 0.4A 250V - contact NO - head 65x20x9 mm
 with magnet 63x19x11 mm
 with cable length 1900 mm
 for Dishwasher hood type (PROJECT SYSTEMS) T150
 T155 - T255
 for Dishwasher pull-through (PROJECT SYSTEMS)
 Series ET - Series ETA

3240181 PROTECTED MAGNET 62x18x10 mm

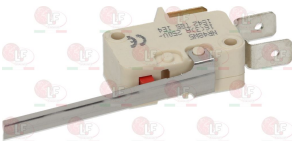


PROJECT SYSTEMS 30690

Microswitches, mechanical

3240820 MICROSWITCH ELECTRICA NR48W5
 1NO + 1NC 16A 250V

3240152 BUSHING FOR MICROSWITCH



PROJECT SYSTEMS 30610

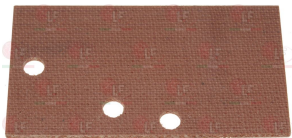
3240473 GASKET FOR BUSHING

5035454 MICRO SUPPORT
 for WASHING MACHINE LF25



3240166 MOUNTING PLATE FOR MICROSWITCH
 external dimensions 46x26 mm

3240153 ROD FOR MICROSWITCH



3240154 SPRING FOR MICROSWITCH ROD



Non-return and expansion valves

- 3526007 NON RETURN VALVE \varnothing 3/4"**
 for Dishwasher (PROJECT SYSTEMS) E50
 for Glasswasher/Cupwasher (PROJECT SYSTEMS) E35
 E40



PROJECT SYSTEMS 30603

Pressure switches

- 3320072 PRESSURE SWITCH 1 LEVEL**
 calibration 65/30 mm
 250V 16A
 max operating temperature 85°C



PROJECT SYSTEMS 30530

Rinse aid pumps and accessories

- 3090226 DETERGENT DISP. PERISTALTIC PUMP PD0.7P**
 fixed flowrate : 0.7 L/h 0.1 bar - 9 second cycle
 230V 50/60Hz 3.5W
 santoprene tube
 for Dishwasher (PROJECT SYSTEMS) P500 - S100 - S50
 S80 - T50 - T80
 for Dishwasher hood type (PROJECT SYSTEMS) T150
 T155 - T255
 for Glasswasher/Cupwasher (PROJECT SYSTEMS) P350
 P350S - P400 - S35 - S40 - T35 - T35S - T40



PROJECT SYSTEMS 30673

- 3090374 KIT DETERGENT DOSING PUMP**
 kit including : 1 elbow fitting complete with stai
 1 hose pvc \varnothing 4x6 mm length 4 m
 1 stainl. Steel bottom filter



- 3090376 PROTHO AND MYBO SANTOPRENE TUBE**





PROJECT SYSTEMS



Suitable for:

3090082 PUMP PERISTALTIC RINSE AID PB0.4
 fixed flowrate: 0.4 L/h 3 bar
 230V 50/60Hz 3.5W
 silicone tube
 for Dishwasher (PROJECT SYSTEMS) E50
 for Glasswasher/Cupwasher (PROJECT SYSTEMS) E35
 E40



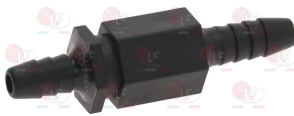
Suitable for:

3090373 KIT RINSE AIR DOSING PUMP
 kit including : 1 "T" fitting with
 non return valve
 hose pvc ø 4x6 mm length 2 mt
 polyethylene hose ø 4x6 mm length 2 m
 1 stainless steel bottom filter



PROJECT SYSTEMS 30683

3090381 NON-RETURN VALVE ø 4x6



3090377 PROTHO AND MYBO SILICONE TUBE



Solenoid valves

3120005 SOLEN. VALVE ELBI TYPE 329 1 WAY 180°
 220/240V 50/60Hz - max. temperature 90°C
 inlet 3/4" - outlet ø 10.5 mm



PROJECT SYSTEMS 30600

3120021 ADJUSTER FOR INLET ELBI BLACK
 flow rate 12 L/min - tolerance +/- 15%



3120019 ADJUSTER FOR INLET ELBI BLACK
 flow rate 5.5 L/min - tolerance +/- 15%



3120022 ADJUSTER FOR INLET ELBI BLACK
 flow rate 16 L/min - tolerance +/- 15%



3120037 ADJUSTER FOR OUTLET ELBI GREEN
 flow rate 0.25 L/min - tolerance +/- 25%



3120201 ADJUSTER FOR OUTLET ELBI GREY
 flow rate 4.7 L/min - tolerance +/- 25%





PROJECT SYSTEMS



Suitable for:

3120016 ADJUSTER FOR OUTLET ELBI NEUTRAL
flow rate 1.2 L/min - tolerance +/- 25%



Suitable for:

3120017 ADJUSTER FOR OUTLET ELBI ORANGE
flow rate 2.5 L/min - tolerance +/- 25%



3120015 ADJUSTER FOR OUTLET ELBI RED
flow rate 0.5 L/min - tolerance +/- 25%



3120203 ADJUSTER FOR OUTLET ELBI WHITE
flow rate 2 L/min - tolerance +/- 25%



3120202 ADJUSTER FOR OUTLET ELBI YELLOW
flow rate 0.35 L/min / tolerance +/- 25%



3120000 FILTER FOR INLET SOLENOID VALVE ELBI



3120204 OUTLET ADJUSTER ELBI BLACK
flow rate 5.5 L/min - tolerance +/- 25%



Supports for wash and rinse arms

3743811 WASHING COLUMN LOWER
for Dishwasher (PROJECT SYSTEMS) G50
for Glasswasher/Cupwasher (PROJECT SYSTEMS) G35
G40



PROJECT SYSTEMS 30970

3743813 4-WAY ARM ASSEMBLY UNIT W/BUSHINGS
for Dishwasher (PROJECT SYSTEMS) G50
for Glasswasher/Cupwasher (PROJECT SYSTEMS) G35
G40



PROJECT SYSTEMS 20010



Suitable for:

Suitable for:

Switches

3319193 BLUE BIPOLAR ON/OFF SWITCH
 16(4)A/250V 4 contacts
 mounting hole 28x28 mm
 for Dishwasher (PROJECT SYSTEMS) P500 - S100 - S50
 S80 - T50 - T80
 for Dishwasher hood type (PROJECT SYSTEMS) T150
 T155 - T255
 for Glasswasher/Cupwasher (PROJECT SYSTEMS) P350
 P350S - P400 - S35 - S40 - T35 - T35S - T40



PROJECT SYSTEMS 30423

3319080 HOUSING FOR PUSH-BUTTON GREY
 mounting hole 28x28 mm - for push-button ø 23 mm



3319190 START UNIPOLAR PUSH-BUTTON
 mounting hole 28x28 mm
 for Dishwasher (PROJECT SYSTEMS) P500 - S100 - S50
 S80 - T50 - T80
 for Dishwasher hood type (PROJECT SYSTEMS) T150
 T155 - T255
 for Glasswasher/Cupwasher (PROJECT SYSTEMS) P350
 P350S - P400 - S35 - S40 - T35 - T35S - T40



PROJECT SYSTEMS 30422

3319080 HOUSING FOR PUSH-BUTTON GREY
 mounting hole 28x28 mm - for push-button ø 23 mm



3319189 SWITCH ON/OFF RED
 mounting hole 23x36 mm
 for Dishwasher (PROJECT SYSTEMS) E50
 for Glasswasher/Cupwasher (PROJECT SYSTEMS) E35
 E40



PROJECT SYSTEMS 30423R

3319663 HOUSING FOR PUSH-BUTTON RECTANG. GREY
 mounting hole 22x30 mm - for push-button 20x25 mm



3319194 WASH UNIPOLAR SWITCH
 16(4)A/250V
 mounting hole 28x28 mm
 for Dishwasher (PROJECT SYSTEMS) S100
 for Dishwasher hood type (PROJECT SYSTEMS) T150
 T155 - T255



PROJECT SYSTEMS 30425R

3319080 HOUSING FOR PUSH-BUTTON GREY
 mounting hole 28x28 mm - for push-button ø 23 mm



Suitable for:

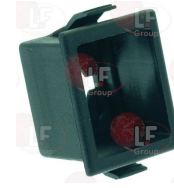
3319188 YELLOW START MONOPOLAR PUSH-BUTTON
 mounting hole 23x36 mm
 for Dishwasher (PROJECT SYSTEMS) E50
 for Glasswasher/Cupwasher (PROJECT SYSTEMS) E35
 E40



PROJECT SYSTEMS 30422R

Suitable for:

3319663 HOUSING FOR PUSH-BUTTON RECTANG. GREY
 mounting hole 22x30 mm - for push-button 20x25 mm



Telethermometers

3441033 TELE-THERMOMETER 56x25 mm 0-120°C
 plastic body
 white dial
 PVC covered capillary length 3000 mm
 bulb with spring \varnothing 6x20 mm



PROJECT SYSTEMS 120500

Thermostats

3444280 SINGLE-PHASE THERMOSTAT 0-90°C
 covered capillary 1500 mm
 bulb \varnothing 6.5x90 mm
 15A 250V
 with adjusting screw
 for Dishwasher (PROJECT SYSTEMS) E50 - P500 - S100
 S50 - S80 - T50 - T80
 for Dishwasher hood type (PROJECT SYSTEMS) T150
 T155 - T255
 for Glasswasher/Cupwasher (PROJECT SYSTEMS) P350
 P350S - P400 - S35 - S40 - T35 - T35S - T40



PROJECT SYSTEMS 30510

PROJECT SYSTEMS 30514



Suitable for:

PROJECT SYSTEMS



Suitable for:

Timers

- 3446052 TIMER TF24 60" 230V**
 connection 8 pins
 cycle 60" - 230V 50/60Hz
 for Dishwasher (PROJECT SYSTEMS) P500
 for Glasswasher/Cupwasher (PROJECT SYSTEMS) P350
 P350S - P400



PROJECT SYSTEMS 30470

Wash and rinse arms for warewashers

- 3743028 COMPLETE RINSE WASH GROUP**
 length 500 mm
 for Dishwasher (PROJECT SYSTEMS) E50



PROJECT SYSTEMS 80960P

- 3743029 FIXING NUT FOR WASH GROUP**
 for Dishwasher (PROJECT SYSTEMS) E50 - S100
 for Dishwasher hood type (PROJECT SYSTEMS) T150
 T155
 for Glasswasher/Cupwasher (PROJECT SYSTEMS) E35
 E40



PROJECT SYSTEMS 20017

- 3743032 PLASTIC SPLASH GUARD CAP**
 for Dishwasher (PROJECT SYSTEMS) E50 - S100
 for Dishwasher hood type (PROJECT SYSTEMS) T150
 T155
 for Glasswasher/Cupwasher (PROJECT SYSTEMS) E35
 E40



PROJECT SYSTEMS 20135P

- 3743812 ARM ASSEMBLY LOCKING SCREW**
 for Dishwasher (PROJECT SYSTEMS) S100



PROJECT SYSTEMS VGP01

- 3186175 O-RING 04175 EPDM**
 ring thickness 3.53 mm - internal \varnothing 44.04 mm
 for Dishwasher (PROJECT SYSTEMS) E50 - S100
 for Dishwasher hood type (PROJECT SYSTEMS) T150
 T155
 for Glasswasher/Cupwasher (PROJECT SYSTEMS) E35
 E40



PROJECT SYSTEMS 18025

- 3186174 SEALING RING PTFE \varnothing 42.2x37.2x2.2 mm**
 for wash assembly
 for Dishwasher (PROJECT SYSTEMS) E50 - S100
 for Dishwasher hood type (PROJECT SYSTEMS) T150
 T155
 for Glasswasher/Cupwasher (PROJECT SYSTEMS) E35
 E40



PROJECT SYSTEMS 20016



PROJECT SYSTEMS



Suitable for:

3501123 SNAP-IN RINSE JET
for Dishwasher (PROJECT SYSTEMS) E50
for Glasswasher/Cupwasher (PROJECT SYSTEMS) E35
E40



PROJECT SYSTEMS 17025

Suitable for:

3501109 SNAP-IN WASH JET
for Dishwasher (PROJECT SYSTEMS) E50
for Glasswasher/Cupwasher (PROJECT SYSTEMS) E35
E40



PROJECT SYSTEMS 20045

PROJECT SYSTEMS 20049

3743039 WASH-RINSE IMPELLER DRUM
for Dishwasher (PROJECT SYSTEMS) E50 - S100
for Dishwasher hood type (PROJECT SYSTEMS) T150
T155
for Glasswasher/Cupwasher (PROJECT SYSTEMS) E35
E40



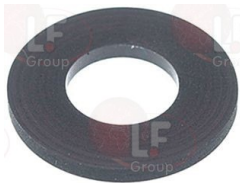
PROJECT SYSTEMS 20015

3743036 COMPLETE UPPER RINSE GROUP
length 435 mm
for Dishwasher (PROJECT SYSTEMS) E50



PROJECT SYSTEMS 50960

3449026 FLAT EPDM GASKET \varnothing 24x12x2 mm
for pipes \varnothing 3/4"



PROJECT SYSTEMS 19050

3743040 RINSE IMPELLER DRUM
for Dishwasher (PROJECT SYSTEMS) E50
for Glasswasher/Cupwasher (PROJECT SYSTEMS) E35
E40



PROJECT SYSTEMS 20020

3743812 ARM ASSEMBLY LOCKING SCREW
for Dishwasher (PROJECT SYSTEMS) S100



PROJECT SYSTEMS VGP01

1186861 O-RING 02018 RED SILICONE
ring thickness 1.78 mm - internal \varnothing 4.48 mm



PROJECT SYSTEMS 18005

PROJECT SYSTEMS 18010

3501123 SNAP-IN RINSE JET
for Dishwasher (PROJECT SYSTEMS) E50
for Glasswasher/Cupwasher (PROJECT SYSTEMS) E35
E40



PROJECT SYSTEMS 17025



PROJECT SYSTEMS



Suitable for:

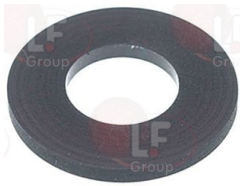
3743035 RINSE GROUP UPPER COMPLETE
length 350 mm
for Glasswasher/Cupwasher (PROJECT SYSTEMS) E35
E40



PROJECT SYSTEMS 30960

PROJECT SYSTEMS 30961

3449026 FLAT EPDM GASKET \varnothing 24x12x2 mm
for pipes \varnothing 3/4"



PROJECT SYSTEMS 19060

3743040 RINSE IMPELLER DRUM
for Dishwasher (PROJECT SYSTEMS) E50
for Glasswasher/Cupwasher (PROJECT SYSTEMS) E35
E40



PROJECT SYSTEMS 20020

3743033 RINSE-WASH GROUP COMPLETE
length 365 mm
for Glasswasher/Cupwasher (PROJECT SYSTEMS) E35



PROJECT SYSTEMS 30950P

3743029 FIXING NUT FOR WASH GROUP
for Dishwasher (PROJECT SYSTEMS) E50 - S100
for Dishwasher hood type (PROJECT SYSTEMS) T150
T155
for Glasswasher/Cupwasher (PROJECT SYSTEMS) E35
E40



PROJECT SYSTEMS 20017

Suitable for:

3743812 ARM ASSEMBLY LOCKING SCREW
for Dishwasher (PROJECT SYSTEMS) S100



PROJECT SYSTEMS VGP01

1186861 O-RING 02018 RED SILICONE
ring thickness 1.78 mm - internal \varnothing 4.48 mm



PROJECT SYSTEMS 18005

PROJECT SYSTEMS 18010

3501123 SNAP-IN RINSE JET
for Dishwasher (PROJECT SYSTEMS) E50
for Glasswasher/Cupwasher (PROJECT SYSTEMS) E35
E40



PROJECT SYSTEMS 17025

3743812 ARM ASSEMBLY LOCKING SCREW
for Dishwasher (PROJECT SYSTEMS) S100



PROJECT SYSTEMS VGP01

3743031 LOWER RINSE-WASH SUPPORT
for Glasswasher/Cupwasher (PROJECT SYSTEMS) E35
E40



PROJECT SYSTEMS 20018A



PROJECT SYSTEMS



Suitable for:

3186175 O-RING 04175 EPDM
ring thickness 3.53 mm - internal \varnothing 44.04 mm
for Dishwasher (PROJECT SYSTEMS) E50 - S100
for Dishwasher hood type (PROJECT SYSTEMS) T150
T155
for Glasswasher/Cupwasher (PROJECT SYSTEMS) E35
E40



PROJECT SYSTEMS 18025

3186174 SEALING RING PTFE \varnothing 42.2x37.2x2.2 mm
for wash assembly
for Dishwasher (PROJECT SYSTEMS) E50 - S100
for Dishwasher hood type (PROJECT SYSTEMS) T150
T155
for Glasswasher/Cupwasher (PROJECT SYSTEMS) E35
E40



PROJECT SYSTEMS 20016

3501109 SNAP-IN WASH JET
for Dishwasher (PROJECT SYSTEMS) E50
for Glasswasher/Cupwasher (PROJECT SYSTEMS) E35
E40



PROJECT SYSTEMS 20045

PROJECT SYSTEMS 20049

3743034 RINSE-WASH GROUP COMPLETE
length 415 mm
for Glasswasher/Cupwasher (PROJECT SYSTEMS) E40



PROJECT SYSTEMS 40950P

Suitable for:

3743032 PLASTIC SPLASH GUARD CAP
for Dishwasher (PROJECT SYSTEMS) E50 - S100
for Dishwasher hood type (PROJECT SYSTEMS) T150
T155
for Glasswasher/Cupwasher (PROJECT SYSTEMS) E35
E40



PROJECT SYSTEMS 20135P

3501123 SNAP-IN RINSE JET
for Dishwasher (PROJECT SYSTEMS) E50
for Glasswasher/Cupwasher (PROJECT SYSTEMS) E35
E40



PROJECT SYSTEMS 17025

3743039 WASH-RINSE IMPELLER DRUM
for Dishwasher (PROJECT SYSTEMS) E50 - S100
for Dishwasher hood type (PROJECT SYSTEMS) T150
T155
for Glasswasher/Cupwasher (PROJECT SYSTEMS) E35
E40



PROJECT SYSTEMS 20015

3743812 ARM ASSEMBLY LOCKING SCREW
for Dishwasher (PROJECT SYSTEMS) S100



PROJECT SYSTEMS VGP01



Suitable for:

3743029 FIXING NUT FOR WASH GROUP
for Dishwasher (PROJECT SYSTEMS) E50 - S100
for Dishwasher hood type (PROJECT SYSTEMS) T150
T155
for Glasswasher/Cupwasher (PROJECT SYSTEMS) E35
E40



PROJECT SYSTEMS 20017

3186175 O-RING 04175 EPDM
ring thickness 3.53 mm - internal \varnothing 44.04 mm
for Dishwasher (PROJECT SYSTEMS) E50 - S100
for Dishwasher hood type (PROJECT SYSTEMS) T150
T155
for Glasswasher/Cupwasher (PROJECT SYSTEMS) E35
E40



PROJECT SYSTEMS 18025

3186174 SEALING RING PTFE \varnothing 42.2x37.2x2.2 mm
for wash assembly
for Dishwasher (PROJECT SYSTEMS) E50 - S100
for Dishwasher hood type (PROJECT SYSTEMS) T150
T155
for Glasswasher/Cupwasher (PROJECT SYSTEMS) E35
E40



PROJECT SYSTEMS 20016

3501109 SNAP-IN WASH JET
for Dishwasher (PROJECT SYSTEMS) E50
for Glasswasher/Cupwasher (PROJECT SYSTEMS) E35
E40



PROJECT SYSTEMS 20045

PROJECT SYSTEMS 20049

PROJECT SYSTEMS



Suitable for:

3743031 LOWER RINSE-WASH SUPPORT
for Glasswasher/Cupwasher (PROJECT SYSTEMS) E35
E40



PROJECT SYSTEMS 20018A

3743032 PLASTIC SPLASH GUARD CAP
for Dishwasher (PROJECT SYSTEMS) E50 - S100
for Dishwasher hood type (PROJECT SYSTEMS) T150
T155
for Glasswasher/Cupwasher (PROJECT SYSTEMS) E35
E40



PROJECT SYSTEMS 20135P

3501123 SNAP-IN RINSE JET
for Dishwasher (PROJECT SYSTEMS) E50
for Glasswasher/Cupwasher (PROJECT SYSTEMS) E35
E40



PROJECT SYSTEMS 17025

3743039 WASH-RINSE IMPELLER DRUM
for Dishwasher (PROJECT SYSTEMS) E50 - S100
for Dishwasher hood type (PROJECT SYSTEMS) T150
T155
for Glasswasher/Cupwasher (PROJECT SYSTEMS) E35
E40



PROJECT SYSTEMS 20015



Suitable for:

3743041 WASH-RINSE ARM ASSY
length 595 mm
for Dishwasher (PROJECT SYSTEMS) S100
for Dishwasher hood type (PROJECT SYSTEMS) T150
T155



PROJECT SYSTEMS 150951P

3743029 FIXING NUT FOR WASH GROUP
for Dishwasher (PROJECT SYSTEMS) E50 - S100
for Dishwasher hood type (PROJECT SYSTEMS) T150
T155
for Glasswasher/Cupwasher (PROJECT SYSTEMS) E35
E40



PROJECT SYSTEMS 20017

1186861 O-RING 02018 RED SILICONE
ring thickness 1.78 mm - internal \varnothing 4.48 mm



PROJECT SYSTEMS 18005

PROJECT SYSTEMS 18010

3743032 PLASTIC SPLASH GUARD CAP
for Dishwasher (PROJECT SYSTEMS) E50 - S100
for Dishwasher hood type (PROJECT SYSTEMS) T150
T155
for Glasswasher/Cupwasher (PROJECT SYSTEMS) E35
E40



PROJECT SYSTEMS 20135P

Suitable for:

3743812 ARM ASSEMBLY LOCKING SCREW
for Dishwasher (PROJECT SYSTEMS) S100



PROJECT SYSTEMS VGP01

3743816 O-RING FOR WASH PIPE CAP
for Dishwasher (PROJECT SYSTEMS) S100
for Dishwasher hood type (PROJECT SYSTEMS) T150
T155 - T255



PROJECT SYSTEMS 18000

3186175 O-RING 04175 EPDM
ring thickness 3.53 mm - internal \varnothing 44.04 mm
for Dishwasher (PROJECT SYSTEMS) E50 - S100
for Dishwasher hood type (PROJECT SYSTEMS) T150
T155
for Glasswasher/Cupwasher (PROJECT SYSTEMS) E35
E40



PROJECT SYSTEMS 18025

3743814 RINSE PIPE CAP
for Dishwasher (PROJECT SYSTEMS) S100
for Dishwasher hood type (PROJECT SYSTEMS) T150
T155 - T255



PROJECT SYSTEMS 20055



Suitable for:

3186174 SEALING RING PTFE \varnothing 42.2x37.2x2.2 mm
for wash assembly
for Dishwasher (PROJECT SYSTEMS) E50 - S100
for Dishwasher hood type (PROJECT SYSTEMS) T150
T155
for Glasswasher/Cupwasher (PROJECT SYSTEMS) E35
E40



PROJECT SYSTEMS 20016

3501109 SNAP-IN WASH JET
for Dishwasher (PROJECT SYSTEMS) E50
for Glasswasher/Cupwasher (PROJECT SYSTEMS) E35
E40



PROJECT SYSTEMS 20045

PROJECT SYSTEMS 20049

3743039 WASH-RINSE IMPELLER DRUM
for Dishwasher (PROJECT SYSTEMS) E50 - S100
for Dishwasher hood type (PROJECT SYSTEMS) T150
T155
for Glasswasher/Cupwasher (PROJECT SYSTEMS) E35
E40



PROJECT SYSTEMS 20015

3743888 WASH/RINSE ARM
length 505 mm



PROJECT SYSTEMS 150950P

PROJECT SYSTEMS



Suitable for:

3501123 SNAP-IN RINSE JET
for Dishwasher (PROJECT SYSTEMS) E50
for Glasswasher/Cupwasher (PROJECT SYSTEMS) E35
E40



PROJECT SYSTEMS 17025

3743815 WASH PIPE CAP
for Dishwasher (PROJECT SYSTEMS) S100
for Dishwasher hood type (PROJECT SYSTEMS) T150
T155 - T255



PROJECT SYSTEMS 20050

Wash jets and accessories

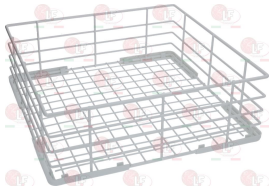
- 3501122 COMPLETE UPPER WASH JET**
for Dishwasher (PROJECT SYSTEMS) E50 - S100 - S50
S80
for Glasswasher/Cupwasher (PROJECT SYSTEMS) E35
E40



PROJECT SYSTEMS 20040

Washing baskets and accessories

- 3055230 GLASS RACK 350x350x115 mm**
in plastic covered wire



PROJECT SYSTEMS C0001

- 3055223 GLASS RACK 400x400x150 mm**
plastic coated wire



PROJECT SYSTEMS C0003

- 3055010 GLASS RACK 500x500x120 mm**
in plastic covered wire



PROJECT SYSTEMS C0005

- 3012002 ANGLE FOOT FOR BASKET 110x110 mm**
colour: white



- 3055490 SAUCER RACK 290x90x75 mm**
made of plastic - for 12 saucers



PROJECT SYSTEMS 30740

The data herewith contained may change without notice and LF SpA cannot be held responsible for possible errors stated or resulting by the use of this document. All rights reserved. No part of this publication may be reproduced without written permission by LF SpA.



Distributing Components, Spare Parts & Accessories in original quality worldwide

-
- LF SpA HEADQUARTERS**
via Voltri, 80 - 47522 Cesena (FC) ITALY
Tel. +39 0547 34 11 11 - Fax +39 0547 34 11 10
www.lfricambi724.it - info@lfricambi.it
Export Dept. Tel. +39 0547 34 11 50 - Fax +39 0547 34 11 55
www.lfspareparts724.com - export@lfspareparts.com
- LF SpA HOUSEHOLD COMPONENTS DIVISION**
Via Padriciano, 99 - AREA Science Park - 34149 Trieste (TS) ITALY
Tel. +39 0547 34 12 42 - Fax +39 0547 34 12 48
www.lfspareparts724.com - info@lfspareparts.com
- EPGC Sas FRANCE**
13, Rue des Forts - 59960 Neuville en Ferrain
Tel. +33 (0)3 20 25 06 21 - Fax +33 (0)3 20 25 34 12
www.epgc.com - epgc@epgc.com
- LF GmbH GERMANY**
Junkersstrasse, 3 - D-82178 Puchheim - München
Tel. +49 89 89 45 78 66 - Fax +49 89 89 45 78 88
www.lfersatzteile724.de - info@lfersatzteile.de
- LF China REPUBLIC OF CHINA**
Room 403, No.2, Huadu Mansion, Lane 422, Huanghua Rd.
Minhang Dist. - 201103 Shanghai
Tel. +86 (0)21 33 53 66 31 - Fax +86 (0)21 33 53 66 32
www.lfspareparts724.com - china@lfspareparts.com
- OOO LF RUSSIAN FEDERATION**
Ul. Anatoliya Zhivova, 8 - office 1 - 123100 Moscow
Tel./Fax +7 495 725 26 53
www.lfspareparts724.ru - info@lfspareparts.ru
- LF Repuestos Horeca S.L.U. SPAIN**
Poligono Industrial Carpetania - C/Miguel Faraday, 8 - 28906 Getafe
Tel. +34 91 477 91 00 - Fax +34 91 477 90 81
www.lfrepuestos-horeca724.es - info@lfrepuestos.es
- LF Scandinavia Aps - LF Spareparts S.p.A. DENMARK**
Nupark, 51 - 7500 Holstebro
Tel. +45 70 70 77 33
www.lfspareparts724.dk - denmark@lfspareparts.dk
- LF SpA Cesena (IT) Swiss Branch Steinhausen SWITZERLAND**
Sennweidstrasse, 45 - CH-6312 Steinhausen
Tel. +41 (0)41 760 15 80/1 - Fax +41 (0)41 760 15 85
www.lfersatzteile724.ch - info@lfersatzteile.ch
- LF Spare Parts Ltd. UNITED KINGDOM**
A10a Lakeside Business Park, Broadway Lane
South Cerney, Gloucestershire GL7 5XL
Tel. +44 (0)1285 86 16 25 - Fax +44 (0)1285 86 39 49
www.lfspareparts724.co.uk - info@lfspareparts.co.uk
- LF Central Est Europe S.r.o. CZECH REPUBLIC**
Antala Staska 1859/34
14000 Praha 4 - KRC
Tel. +420 730 156 910
www.lfspareparts724.cz - info@lfspareparts.cz
- LF SPARE PARTS INC. USA**
Legal address:
155 Office Plaza Dr - Suite A - Tallahassee, FL 32301
Business/Mailing address:
1100 South Tower, 225 Peachtree St., N.E. - Atlanta, GA 30303, USA
Tel. +1-404-525-2600 - Fax +1-404-586-3528
www.lfspareparts724.us - info@lfspareparts.us
Tel. West Coast and Midwest: 206-349-1525 Sauro
Tel. East Coast and the Caribbean: 786-817-1764 Luis
-
- AUSTRALIA AND NEW ZEALAND**
www.lfspareparts724.com
andrea.calvio@lfspareparts.com
- AUSTRIA**
www.lfersatzteile724.at
info@lfersatzteile.at
- BALKAN COUNTRIES**
www.lfspareparts724.com
matija.ramov@lfspareparts.com
- BALTIC COUNTRIES**
www.lfspareparts724.com
inara.silina@lfspareparts.com
- LATIN AMERICA AND THE CARRIBEANS**
www.lfrepuestos-horeca724.es
export@lfrepuestos.es
- POLAND**
www.lfspareparts724.pl
info@lfspareparts.pl
- SOUTH KOREA**
www.lfspareparts724.com
fabio.doni@lfspareparts.com
- TURKEY**
www.lfyedekparca724.com
export@lfspareparts.com