



# Spare parts for the professional sector: Warewashing equipment



Suitable for:

# LUXIA



This catalogue is automatically generated.  
Therefore, the sequence of the items might  
not be always shown at best.  
Updates will be issued in case of additions  
and/or amendments.  
*Suitable universal spare parts may not be included*

Rel. 2018-02261152





Suitable for:

# LUXIA



Suitable for:

## Air traps

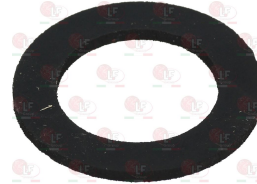
**3060036 AIR CHAMBER 80x50x34 mm**  
 hose end fitting  $\varnothing$  6 mm  
 for Dishwasher (LUXIA) K1000QBS - K400QS - K502QBS  
 for Dishwasher hood type (LUXIA) K1300 - K660  
 for Glasswasher/Cupwasher (LUXIA) K10QT - K111QS  
 K12QS



LUXIA L3072

LUXIA L714

**3060061 GASKET FLAT  $\varnothing$  38x25x2 mm**



LUXIA L7100

## Ball valves and accessories

**3526703 BALL VALVE  $\varnothing$  1/2"FF**



LUXIA 3002140

## Caps

**5023357 CAP CHROME-PLATED BRASS M1/8"**



LUXIA 12002

**40E5524 GASKET FLAT FIBRE  $\varnothing$  16x10x1.5 mm**



## Castors, rollers and accessories

**5018135 ROLL ECCENTRIC CONVEYOR  $\varnothing$  30x27x12 mm**



LUXIA 3003012

**3346011 TROLLEY SPACER ROLLER  
 $\varnothing$  24x22 mm**



LUXIA 3003026



## Clamps

**3449456 HOSE CLAMP 50-70**  
for pipes  $\varnothing$  50÷70 mm  
made of stainless steel AISI 304  
height 9 mm and screw E7  
suitable for food industry



LUXIA L3394

**3449457 HOSE CLAMP 60-80**  
for pipes  $\varnothing$  60÷80 mm  
made of stainless steel AISI 304  
height 9 mm and screw E7  
suitable for food industry



LUXIA L3395

## Contact thermostats

**3444608 CONTACT THERMOSTAT 60°C**  
automatic reset - for wash tank  
for Glasswasher/Cupwasher (LUXIA) K10QT - K11QS  
K12QS - OCEANO35 - OCEANO40



LUXIA L2061

LUXIA L2062

LUXIA L2083

**3443079 CONTACT THRMOSTAT 110°C**  
for boiler  
for Dishwasher (LUXIA) OCEANO50 - OCEANO60  
for Dishwasher hood type (LUXIA) POLY1500  
POLY2000  
for Glasswasher/Cupwasher (LUXIA) OCEANO35  
OCEANO40



LUXIA L7292

## Contactors

**3446556 CONTACTOR LOVATO BG0910A**  
coil 9A 230V 50/60Hz 4Kw  
3 normally open contacts  
1 normally open auxiliary contact



LUXIA L2113

**3446227 AUXILIARY CONTACT LOVATO G218**  
10A  
1 contact NO  
1 contact NC



**3397405 MOTOR PROTECTION SWITCH AEG Mbs25**  
50/60Hz - 1.5Kw  
2.5÷4A  
3 NO contacts



LUXIA 2000394



Suitable for:

# LUXIA

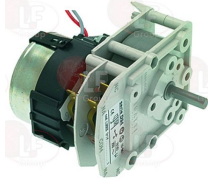


Suitable for:

## Controllers and changeover switches

### 3322228 CONTROLLER D94 2 CAMS

120 seconds cycle  
230V 50/60Hz  
D-shaped pin  $\varnothing$  6x4.6 mm  
for Dishwasher hood type (LUXIA) K1300



LUXIA L2010

### 3322148 CONTROLLER 11803F1 3 CAMS

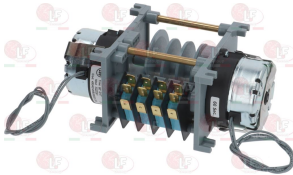
120 seconds cycle  
230V 50/60Hz  
for Dishwasher (LUXIA) K1000QBS - K400QS - K502QBS T50  
for Dishwasher hood type (LUXIA) K660  
for Glasswasher/Cupwasher (LUXIA) K10QT - K11QS  
K12QS - OCEANO35 - OCEANO40 - T40 - T45



LUXIA L2014

### 3322361 CONTROLLER 4904DV 4 CAMS

1st cycle: 60 seconds  
2nd cycle: 216 seconds  
230V 50/60Hz  
for Dishwasher hood type (LUXIA) K1300



LUXIA L2008

## Curtains

### 3456020 ROD FOR CURTAIN



LUXIA 3009109

### 3443321 SIDE CURTAIN 545x585 mm



LUXIA 3004050

### 3443322 CENTRAL CURTAIN 615x495 mm



LUXIA 3004051



# LUXIA



Suitable for:

**3443326 CURTAIN ROD 600 mm**

Suitable for:



LUXIA 3004053

## Door catches

**3398050 COMPLETE DOOR CATCH**  
for all models



LUXIA L3110

## Drain assembly

**3316076 COMPLETE DRAIN ASSEMBLY**  
connection  $\varnothing$  1"1/4 outlet  $\varnothing$  37 mm  
for Dishwasher (LUXIA) K1000QBS - K400Q - K502Q  
K502QBS  
for Dishwasher hood type (LUXIA) K1300 - K660



LUXIA L3043

LUXIA L3314

LUXIA L5113

**3316116 DRAIN ASSEMBLY  $\varnothing$  1"**  
outlet external  $\varnothing$  26 mm  
for Glasswasher/Cupwasher (LUXIA) K10QT - K11QS  
K12QS - OCEANO35 - OCEANO40



LUXIA L3042

**3316118 RING NUT FOR DRAIN ASSEMBLY 1"**



LUXIA L3311

**3186270 GASKET FLAT  $\varnothing$  50x34x4 mm**  
for drain assembly  $\varnothing$  1"



LUXIA L5111



Suitable for:

**3316117 DRAIN ASSEMBLY  $\varnothing$  1"1/4**  
outlet external  $\varnothing$  37 mm  
for Dishwasher (LUXIA) K1000QBS - K400QS - K502QBS  
for Dishwasher hood type (LUXIA) K1300 - K660



LUXIA L3043

**3316119 RING NUT FOR DRAIN ASSEMBLY  $\varnothing$  1"1/4**



LUXIA L3314

Suitable for:

**3186272 GASKET FLAT  $\varnothing$  55x42x1 mm**  
for drain assembly  $\varnothing$  1"1/4



LUXIA L5113

## Drain hoses

**3450027 DRAIN HOSE  $\varnothing$  25x2000 mm**  
muffs internal  $\varnothing$  20 and 28 mm  
max temperature 90°C



LUXIA L3006

**3450035 DRAIN HOSE  $\varnothing$  32x2000 mm**  
elbow hose internal  $\varnothing$  40 mm  
max temperature 90°C



LUXIA L3009

**3450038 DRAIN HOSE  $\varnothing$  34x2000 mm**  
muff internal  $\varnothing$  33 mm  
max temperature 90°C



LUXIA

## Drain plugs

**3448129 OVERFLOW PIPE  $\varnothing$  26x90 mm**  
made of plastic  
for Glasswasher/Cupwasher (LUXIA) K10QT - K11QS  
K12QS



LUXIA L3050

LUXIA 3050

**3316077 COMPLETE DRAIN ASSEMBLY**  
connection  $\varnothing$  1" outlet  $\varnothing$  26 mm  
for Glasswasher/Cupwasher (LUXIA) K11Q - K11QS  
K11QT - K12Q - K12QS



LUXIA L3042

LUXIA L3311

LUXIA L5111



Suitable for:

**3448194 OVERFLOW PIPE  $\varnothing$  35x130 mm**  
of plastic  
for Dishwasher (LUXIA) K1000QBS  
for Dishwasher hood type (LUXIA) K660



LUXIA L3053

LUXIA L3054

Suitable for:

**3448251 OVERFLOW PIPE  $\varnothing$  35x250 mm**  
plastic made  
for Dishwasher hood type (LUXIA) K1300



LUXIA L3055

**3448308 OVERFLOW PIPE  $\varnothing$  35x352 mm**  
for Dishwasher hood type (LUXIA) POLY1000  
POLY1500 - POLY2000



LUXIA L7406

LUXIA L7434

**3448307 S/STEEL OVERFLOW PIPE  $\varnothing$  25x220 mm**  
for Glasswasher/Cupwasher (LUXIA) T40 - T45



LUXIA L7105

LUXIA L7299

## Electric pumps

**3122515 ELECTRIC PUMP AP 1001 0.75HP**  
inlet external  $\varnothing$  45 mm - outlet external  $\varnothing$  40 mm  
0.75HP 230V 50Hz 4A - Rpm 2850  
capacitor 12  $\mu$ f - flow rate 280 L/min



LUXIA L1304

LUXIA L1305

**3068018 CAPACITOR DUCATI ENERGIA 12 $\mu$ F**  
450V 50/60Hz  
operating temperature -25 + 85°C  
lead connection 6.35x0.8 mm  
 $\varnothing$  36x70 mm



**3122524 GASKET FOR PUMP HOUSING AP**



**3122386 IMPELLER AP  $\varnothing$  102 mm OLD TYPE**  
threaded connection  $\varnothing$  7 mm



**3122538 PUMP HOUSING AP**  
inlet external  $\varnothing$  45 mm - outlet external  $\varnothing$  40 mm



**3122024 SEAL MECHANICAL FOR SHAFT  $\varnothing$  12 mm**  
metal seal internal  $\varnothing$  11 mm -  $\varnothing$  external 24 mm  
height 15.5 mm  
back. element internal  $\varnothing$  14 mm -  $\varnothing$  external 26 mm  
height 8 mm





Suitable for:

# LUXIA



Suitable for:

**3122507 ELECTRIC PUMP AP 903DX 0.15HP**  
 inlet external  $\varnothing$  28 mm - outlet external  $\varnothing$  28 mm  
 0.15HP 230V 50Hz 1.5A - Rpm 2850  
 capacitor 6.3  $\mu$ f - flow rate 90 L/min



**3068010 CAPACITOR DUCATI ENERGIA 6,3 $\mu$ F**  
 450V 50/60Hz  
 operating temperature -25 +85°C  
 lead connection 6.35x0.8 mm  
 $\varnothing$  32xh55 mm



LUXIA L1301

**3068097 CAPACITOR ELECTRICAL 6.3 $\mu$ F**  
 450V 50/60Hz -  $\varnothing$  30xh51 mm



**3122503 IMPELLER AP  $\varnothing$  72 mm**



**1186237 O-RING 03300 EPDM**  
 ring thickness 2.62 mm - internal  $\varnothing$  75.87 mm



**3122506 PUMP HOUSING AP**  
 inlet external  $\varnothing$  28 mm - outlet external  $\varnothing$  28 mm



**3122058 SEAL MECHANICAL FOR SHAFT  $\varnothing$  11 mm**  
 metal seal internal  $\varnothing$  10 mm -  $\varnothing$  external 24 mm  
 height 13.5 mm  
 back. element internal  $\varnothing$  14 mm -  $\varnothing$  external 26 mm  
 height 8 mm



**3122180 ELECTRIC PUMP FIR 1226SX 2HP**  
 inlet external  $\varnothing$  63 mm - outlet external  $\varnothing$  48 mm  
 2HP 220/400V 50Hz - Rpm 2850



LUXIA 22037

**3122211 IMPELLER FIR  $\varnothing$  118 mm**  
 for models 1226/1227SX







Suitable for:

**3122213 PUMP HOUSING FIR**  
inlet external  $\varnothing$  63 mm - outlet external  $\varnothing$  48 mm  
for models 1226/1227SX



# LUXIA



Suitable for:

**3122026 PUMP HOUSING GASKET FIR**



**3122024 SEAL MECHANICAL FOR SHAFT  $\varnothing$  12 mm**  
metal seal internal  $\varnothing$  11 mm -  $\varnothing$  external 24 mm  
height 15.5 mm  
back. element internal  $\varnothing$  14 mm -  $\varnothing$  external 26 mm  
height 8 mm



## Filters

**5014096 ELECTRIC PUMP FILTER**  
dimensions 88x40x53 mm  
for Dishwasher (LUXIA) OCEANO50 - OCEANO60  
for Glasswasher/Cupwasher (LUXIA) OCEANO35  
OCEANO40



LUXIA L7184

**1186833 O-RING 03100 EPDM**  
ring thickness 2.62 mm - internal  $\varnothing$  25.07 mm



LUXIA L7213

**3160056 TANK FILTER STAINLESS STEEL  $\varnothing$  110x64 mm**  
for Dishwasher (LUXIA) K400QS - K502QBS  
for Glasswasher/Cupwasher (LUXIA) K10QT - K11QS  
K12QS



LUXIA L3011

LUXIA 3011

**3160059 FILTER RETAINING NUT**  
thread pitch F6



LUXIA L3030

**3160057 TANK FILTER STAINLESS STEEL  $\varnothing$  140x129 mm**  
for Dishwasher hood type (LUXIA) K1300



LUXIA L3016

**3160059 FILTER RETAINING NUT**  
thread pitch F6



LUXIA L3030



Suitable for:

**3160058 TANK FILTER STAINLESS STEEL  $\varnothing$  143x80 mm**  
for Dishwasher (LUXIA) K1000QBS  
for Dishwasher hood type (LUXIA) K660  
for Glasswasher/Cupwasher (LUXIA) K1000R



LUXIA L3012

Suitable for:

**3160059 FILTER RETAINING NUT**  
thread pitch F6



LUXIA L3030

## Fittings

**1349158 FITTING  $\varnothing$  3/4"M-1/2"F REDUCED**



LUXIA 12024

**3349346 NICHEL-PL.HOSE-END FITTING  $\varnothing$  1/4"M  $\varnothing$  12**



LUXIA 12005

**3349337 NICHEL-PL.T-FITTING  $\varnothing$  1/4"F-1/4"F-1/4"F**



LUXIA 12008

**3349324 NICHEL-PLATED FITTING  $\varnothing$  1/4"M-1/2"M**



LUXIA 12033

**3349330 NICHEL-PLATED FITTING  $\varnothing$  1/4"M-1/8"F**



LUXIA 12032

## Gears

**5018162 CONVEYOR SHAFT LONG WITH ECCENTRIC**  
total length 250 mm



LUXIA 3003116



## Guides

5031160 PROFILE FOR DOOR SLIDE-TRAY 760 mm



LUXIA 3004026

## Heating elements

3455418 BRACKET FOR HEATING ELEMENT



LUXIA 16045

5015994 COVER FOR HEATING ELEMENT /PLASTIC  
ø 130 mm - height 40 mm



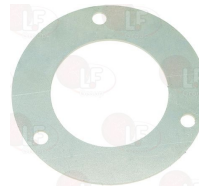
LUXIA 75311

3455310 HEATING ELEMENT BOILER 14000/15240W 230/  
immersed depth 480 mm  
flange external ø 72 mm - with bulbholder sheathin  
complete with O-ring ø 67 mm (3186014)  
nut on request (3528233) and washer (3528238)



LUXIA 30001011/B

3455308 FLANGE FOR HEATING ELEMENT  
internal ø 57 mm



3186014 O-RING 06225 EPDM ø 67 mm  
ring thickness 5.34 mm - internal ø 56.52 mm



LUXIA 13015

3755050 HEATING ELEMENT BOILER 4300W 230/400V  
immersed depth 270 mm  
flange external ø 63 mm - with bulbholder sheathin  
complete with O-ring ø 58 mm (3186013)  
for Dishwasher (LUXIA) K1000QBS - T50  
for Dishwasher hood type (LUXIA) K660



LUXIA L2134

3455306 HEATING ELEMENT FINNED 2000/2180W 230/24  
length 390 mm - length of finned part 360 mm  
width 100 mm - fittings ø 3/8"



LUXIA 2000359



Suitable for:

Suitable for:

**3355601 HEATING ELEMENT FOR BOILER 2400W 220V**  
 immersed length 200 mm  
 external  $\varnothing$  flange 63 mm - with probe receptacle  
 complete with O-ring  $\varnothing$  58 mm (3186013)  
 for Dishwasher (LUXIA) K400QS - K502QBS - 5P - 5Q  
 5R - 502 - 7P - 7Q - 7R  
 for Glasswasher/Cupwasher (LUXIA) K10QT - K11QS  
 K12QS - OCEANO35 - OCEANO40 - T40 - T45

**3186013 O-RING 06187 EPDM  $\varnothing$  58 mm**  
 ring thickness 5.34 mm - internal  $\varnothing$  47.00 mm



LUXIA L2120  
LUXIA 2122

LUXIA L2122

LUXIA L2128

LUXIA L5107

**3355417 HEATING ELEMENT FOR BOILER 5490W 220V**  
 immersed length 380 mm  
 ext.  $\varnothing$  flange 63 mm - with bulbholder sheathing  
 complete with O-ring  $\varnothing$  58 mm (3186013)  
 nut (3528232) and washer (3528238) on request

**3186013 O-RING 06187 EPDM  $\varnothing$  58 mm**  
 ring thickness 5.34 mm - internal  $\varnothing$  47.00 mm

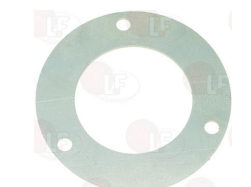


LUXIA L2135

LUXIA L5107

**3355480 HEATING ELEMENT FOR BOILER 9000W 220/380**  
 immersed length 460 mm  
 flange external  $\varnothing$  72 mm  
 with probe receptacle  $\varnothing$  7 mm  
 complete with O-ring  $\varnothing$  67 mm (3186014)  
 nut (3528232) and washer (3528238) on request

**3455308 FLANGE FOR HEATING ELEMENT**  
 internal  $\varnothing$  57 mm



LUXIA 30001011

**3186014 O-RING 06225 EPDM  $\varnothing$  67 mm**  
 ring thickness 5.34 mm - internal  $\varnothing$  56.52 mm



LUXIA 13015

Suitable for:

Suitable for:

**3755070 HEATING ELEMENT TANK 1000W 230V**  
 immersed depth 150 mm  
 width 35 mm - fittings  $\varnothing$  10 mm  
 complete with nuts and o-ring gaskets  
 for Glasswasher/Cupwasher (LUXIA) OCEANO35  
 OCEANO40



LUXIA L7212

**3355021 HEATING ELEMENT TANK 2000W 230V**  
 immersed depth 265 mm  
 width 35 mm - height 30 mm  
 fittings  $\varnothing$  10 mm  
 for Dishwasher (LUXIA) K1000QBS - K400QS - K502QBS  
 for Dishwasher hood type (LUXIA) K1300 - K660  
 for Glasswasher/Cupwasher (LUXIA) K10QT - K11QS  
 K12QS



LUXIA L2127

LUXIA 2127

**1186304 O-RING 0112 EPDM**  
 ring thickness 2.62 mm - internal  $\varnothing$  9.92 mm



**3355640 HEATING ELEMENT TANK 2800W 220V**  
 immersed depth 260 mm  
 height 25 mm - flange external  $\varnothing$  55 mm  
 complete with O-ring  $\varnothing$  48 mm (3186001)



LUXIA I2119

LUXIA L2119

**3755069 HEATING ELEMENT TANK 450W 230V**  
 adhesive - measurements 220x110 mm  
 complete with thermostat and cables  
 for Dishwasher (LUXIA) T50  
 for Glasswasher/Cupwasher (LUXIA) T40 - T45

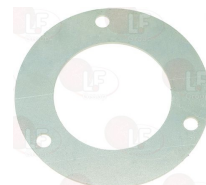


**3755952 HEATING ELEMENT 12000W 220V**  
 immersed depth 460 mm  
 flange external  $\varnothing$  72 mm - with bulbholder sheathin  
 complete with O-ring  $\varnothing$  67 mm (3186014)



LUXIA 3000101/A

**3455308 FLANGE FOR HEATING ELEMENT**  
 internal  $\varnothing$  57 mm





Suitable for:

**3186014 O-RING 06225 EPDM  $\varnothing$  67 mm m**  
ring thickness 5.34 mm - internal  $\varnothing$  56.52 mm



LUXIA 13015

# LUXIA

Suitable for:



## Hose-end fittings

**3315030 3-WAYS HOSE-END FITTING  $\varnothing$  10 mm**  
for Dishwasher (LUXIA) K400QS  
for Glasswasher/Cupwasher (LUXIA) K11QS - K12QS  
OCEANO35 - OCEANO40



LUXIA L5046

## Hydraulic piping

**3450114 PVC PIPE  $\varnothing$  4/7 mm - 10 mt**  
alimentary



LUXIA L2156

**3450214 PVC PIPE  $\varnothing$  4/7 mm - 100 m**  
alimentary



LUXIA L2156

## Indicator lights

**5060722 INDICATOR LIGHT GROUP GREEN-RED 250V**  
mounting hole 28x53 mm  
for Dishwasher (LUXIA) OCEANO50 - OCEANO60  
for Dishwasher hood type (LUXIA) POLY1000  
POLY1500  
for Glasswasher/Cupwasher (LUXIA) OCEANO35  
OCEANO40



LUXIA L7211

**3221097 INDICATOR LIGHT NEUTRAL 220V**  
head  $\varnothing$  8 mm - 120°C





Suitable for:

**3221159 INDICATOR LIGHT RED 250V**  
 head  $\varnothing$  16 mm - hole  $\varnothing$  13 mm - 120°C  
 M faston 6.3x0.8 mm  
 universal application  
 for Dishwasher (LUXIA) K1000QBS - K400QS - K502QBS  
 for Dishwasher hood type (LUXIA) K1300 - K660  
 for Glasswasher/Cupwasher (LUXIA) K10QT - K11QS  
 K12QS



LUXIA L2040

**3221677 INDICATOR LIGHT ORANGE 250V**  
 $\varnothing$  head 16 mm -  $\varnothing$  hole 13 mm - 120°C  
 faston M 6.3x0.8 mm  
 universal application



LUXIA L7392

**3449034 FLEX HOSE  $\varnothing$  3/4" Fp x CFp 1500 mm**  
 EPDM hose covered in stainless steel  
 hose external  $\varnothing$  17 mm - internal  $\varnothing$  12 mm  
 max temperature 90°C  
 max pressure 20 bar  
 WRAS approved



LUXIA L3008

Suitable for:

**3221169 INDICATOR LIGHT GREEN 250V**  
 head  $\varnothing$  16 mm - hole  $\varnothing$  13 mm - 120°C  
 faston M 6.3x0.8 mm  
 universal application  
 for Dishwasher (LUXIA) K1000QBS - K400QS - K502QBS  
 for Dishwasher hood type (LUXIA) K1300 - K660  
 for Glasswasher/Cupwasher (LUXIA) K10QT - K11QS  
 K12QS



LUXIA L2041

**3221678 INDICATOR LIGHT TRANSPARENT 250V**  
 $\varnothing$  head 16 mm -  $\varnothing$  hole 13 mm - 120°C  
 faston M 6.3x0.8 mm  
 universal application



## Inlet hoses



Suitable for:

# LUXIA



Suitable for:

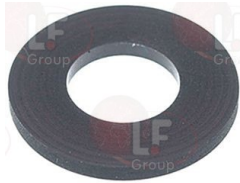
## Inlet hoses

**3449055 INLET ELBOW HOSE  $\varnothing$  3/4" FF 1500 mm**  
thermoplastic hose  $\varnothing$  13x19 mm  
brass fittings  $\varnothing$  3/4"F with gaskets  
max temperature 90°C  
max pressure 10 bar  
with WRAS approval



LUXIA L3005

**3449026 FLAT EPDM GASKET  $\varnothing$  24x12x2 mm**  
for pipes  $\varnothing$  3/4"



**3449025 FILTERST. STEEL FOR INLET HOSE  $\varnothing$  3/4"**  
for all models



## Ironmongery (screws,nuts,washers)

**9742005 FEATHER STEEL C40 8x7x30 mm**  
UNI 6604/A - DIN 6685/A



LUXIA 2001046

**5022074 HEXAGON HEAD SCREW M8x40**  
stainless steel - UNI 5739 - DIN 933 - ISO 4017



LUXIA 11165

## Knobs

**3241124 THERMOSTAT KNOB  $\varnothing$  42 mm**  
D-shaped hole 6x4.6 mm  
for all models



LUXIA L3002





## Manifolds for dishwashers

**3316159 DRAIN MANIFOLD**  
for Glasswasher/Cupwasher (LUXIA) T40 - T45



LUXIA L7006

LUXIA L7110

**3316160 DRAIN ASSEMBLY RING NUT**  
for Dishwasher (LUXIA) T50  
for Glasswasher/Cupwasher (LUXIA) T40 - T45



LUXIA L7007

**3786645 GASKET FLAT EPDM  $\varnothing$  105x85x3 mm**  
for drain assembly  
for Dishwasher (LUXIA) T50  
for Glasswasher/Cupwasher (LUXIA) T40 - T45



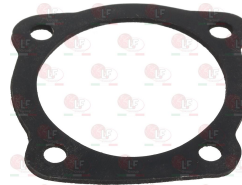
LUXIA L7099

**3743691 2-WAY 90° ELBOW CONNECTION**  
for Dishwasher hood type (LUXIA) K1300 - K660



LUXIA L1601

**3786866 GASKET FOR WASH ARM SUPPORT**  
dimensions 70x70x2 mm - middle hole  $\varnothing$  56 mm



LUXIA L1892

**3743694 PLASTIC 90° ELBOW CONNECTION**  
for Dishwasher hood type (LUXIA) K1300 - K660



LUXIA L1600

## Microswitches, magnetic

**3240441 MAGNETIC MICROSWITCH E5301C**  
0,4A 250V NO - cable 900 mm



LUXIA 3003112

**3240442 MAGNET FOR MICROSWITCH  $\varnothing$  12x10 mm**



LUXIA 3003113



Suitable for:

# LUXIA



Suitable for:

## Microswitches, mechanical

**3240146 MICROSWITCH FOR DOOR COMPLETE**  
 for Dishwasher (LUXIA) K1000QBS - K400QS - K502QBS  
 for Glasswasher/Cupwasher (LUXIA) K10QT - K11QS  
 K12QS - OCEANO35 - OCEANO40



LUXIA L2131

LUXIA 2131

## Non-return and expansion valves

**1526503 NON-RETURN VALVE  $\varnothing$  40 mm**  
 ballcock - outlets  $\varnothing$  12 mm  
 stainless steel cap



LUXIA 999900006

**3786648 GASKET FLAT EPDM  $\varnothing$  40x27x1.5 mm**



**1186805 O-RING 0115 EPDM**  
 ring thickness 2.62 mm - internal  $\varnothing$  11.91 mm



**3528083 VALVE CAP**



## Pegs

**3389006 PEG stainless steel RH**



LUXIA 3003100

**3389008 PTFE RING FOR PEG**



LUXIA 3003024

**3389007 LEFT-HAND STAINLESS STEEL PEG**



LUXIA 3003101

**3389009 SPACER BUSHING FOR PEG**



LUXIA 3003025



## Pins

- 5043180 SUPPORT SHAFT FOR CART TRANSVERSAL**  
 thread M10  
 length 506 mm



LUXIA 3003010

## Position switches

- 3240670 LIMIT MICROSWITCH ERSCE E100.00.A1**  
 6A 230V  
 for Dishwasher hood type (LUXIA) K1300



LUXIA L2109

## Pressure switches

- 3320027 PRESSURE SWITCH 1 LEVEL**  
 calibration 50/30 mm  
 250V 16A  
 max operating temperature 85°C



LUXIA L2091

LUXIA L7106

LUXIA 2091

- 3320036 PRESSURE SWITCH 1 LEVEL**  
 calibration 75/35 mm  
 250V 16A  
 max operating temperature 85°C



LUXIA L2092

- 3320040 PRESSURE SWITCH 1 LEVEL**  
 calibration 70/40 mm  
 250V 16A  
 max operating temperature 85°C



LUXIA L7109

- 3320098 PRESSURE SWITCH 1 LEVEL**  
 calibration 250/40 mm  
 250V 16(4)A



LUXIA 88110



Suitable for:

# LUXIA



Suitable for:

## Relays

**5026284 POWER RELAY FINDER 40.52.8.024.0000**  
24Vac 50/60Hz - 2 exchange contacts 8A



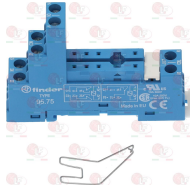
LUXIA 3006078

**3351605 RELAY POWER FINDER 60.63.8.230.0000**  
230V 50/60Hz  
3 exchange contacts 10A



LUXIA N23190

**3351039 SOCKET WITH TERMINALS FINDER 95.75**  
10A 250V



LUXIA 3006079

## Rinse aid pumps and accessories

**3090016 HYDRAULIC DISPENSER TYPE 3000**  
for rinse aid - flow rate max 3.6 cc  
with inspectionable filter - silicone valves  
neoprene/nylon diaphragm



LUXIA L1504

LUXIA L7219

LUXIA L7012

LUXIA L7374

LUXIA L7013

**3090056 DIAPHRAGM MOD. DA 3010**



**3090003 INLET VALVE FOR RINSE AID INJECTOR**



**3090017 SUCTION FILTER TYPE 3000**



**3090018 T-FITTING BLACK**





## Scale removers for dishwashers

**3094005 4 COLUMN SCALE REMOVER**  
width 165 mm - length 390 mm



LUXIA

**3010138 WATER SOFTENER SUPPORT**  
distance between mounting holes 195 mm



## Selector switches

**5025387 SELECTOR SWITCH 1-2-3 K1300**  
square pin 5x5 mm



LUXIA L2028

**3059078 SELECTOR SWITCH 2-POLE 16A 380V**  
square spindle 5x5 mm  
for Dishwasher (LUXIA)



LUXIA L2030

**3057326 SELECTOR SWITCH 4 POSITIONS**



LUXIA 3002031

## Solenoid valves

**3120405 SOLEN. VALVE T&P 1 WAY 180°**  
230V 50/60Hz - max. temperature 90°C  
inlet 3/4" - outlet ø 10.5 mm



LUXIA L2021

**3120421 ADJUSTER FOR OUTLET T&P BLACK**  
flow rate 5 L/min - tolerance +/- 20%



**3120608 ADJUSTER FOR OUTLET T&P DARK BROWN**  
flow rate 1.2 L/min - tolerance +/- 25%



**3120568 ADJUSTER FOR OUTLET T&P GREEN**  
flow rate 3 L/min - tolerance +/- 25%





Suitable for:

**3120391 ADJUSTER FOR OUTLET T&P LIGHT BLUE**  
flow rate 1 L/min - tolerance +/- 25%



**3120423 ADJUSTER FOR OUTLET T&P ORANGE**  
flow rate 0.5 L/min - tolerance +/- 25%



**3120386 ADJUSTER FOR OUTLET T&P WHITE**  
flow rate 0.8 L/min - tolerance +/- 25%



**D120056 ADJUSTER INLET T&P BRONZE**  
flowrate 12 L/min



**D120057 ADJUSTER INLET T&P LIGHT BROWN**  
flowrate 16 L/min



**D120052 ADJUSTER INLET T&P RED**  
flowrate 3 L/min



# LUXIA

Suitable for:

**3120387 ADJUSTER FOR OUTLET T&P LIGHT BROWN**  
flow rate 1.5 L/min - tolerance +/- 25%



**3120424 ADJUSTER FOR OUTLET T&P RED**  
flow rate 0.25 L/min - tolerance +/- 25%



**3120422 ADJUSTER FOR OUTLET T&P YELLOW**  
flow rate 2.5 L/min - tolerance +/- 25%



**D120054 ADJUSTER INLET T&P GREY**  
flowrate 6 L/min



**D120058 ADJUSTER INLET T&P ORANGE**  
flowrate 20 L/min



**D120055 ADJUSTER INLET T&P WHITE**  
flowrate 10 L/min





Suitable for:

**D120053 ADJUSTER INLET T&P YELLOW**  
flowrate 5.5 L/min



**3120431 COIL T&P 12Vac 50/60Hz**  
for solenoid valves T&P



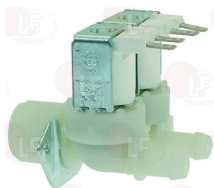
**D120090 COIL T&P 120V 60Hz 8VA**  
for solenoid valves T&P



**3120432 COIL T&P 24Vac 50/60Hz**  
for solenoid valves T&P



**3120407 SOLEN. VALVE T&P 2 WAY 180°**  
230V 50/60Hz - max. temperature 90°C  
inlet 3/4" - two outlets ø 10.5 mm



LUXIA L2020

**3120608 ADJUSTER FOR OUTLET T&P DARK BROWN**  
flow rate 1.2 L/min - tolerance +/- 25%



## LUXIA

Suitable for:

**D120059 ADJUSTER OUTLET T&P BLUE**  
flow rate 8 L/min - tolerance +/-25%



**D120092 COIL T&P 12Vdc**  
for solenoid valves T&P



**3120433 COIL T&P 220V 50/60Hz**  
for solenoid valves T&P



**D120093 COIL T&P 24Vdc**  
for solenoid valves T&P



**3120421 ADJUSTER FOR OUTLET T&P BLACK**  
flow rate 5 L/min - tolerance +/- 20%



**3120568 ADJUSTER FOR OUTLET T&P GREEN**  
flow rate 3 L/min - tolerance +/- 25%





Suitable for:

**3120391 ADJUSTER FOR OUTLET T&P LIGHT BLUE**  
flow rate 1 L/min - tolerance +/- 25%



**3120423 ADJUSTER FOR OUTLET T&P ORANGE**  
flow rate 0.5 L/min - tolerance +/- 25%



**3120386 ADJUSTER FOR OUTLET T&P WHITE**  
flow rate 0.8 L/min - tolerance +/- 25%



**D120056 ADJUSTER INLET T&P BRONZE**  
flowrate 12 L/min



**D120057 ADJUSTER INLET T&P LIGHT BROWN**  
flowrate 16 L/min



**D120052 ADJUSTER INLET T&P RED**  
flowrate 3 L/min



# LUXIA

Suitable for:

**3120387 ADJUSTER FOR OUTLET T&P LIGHT BROWN**  
flow rate 1.5 L/min - tolerance +/- 25%



**3120424 ADJUSTER FOR OUTLET T&P RED**  
flow rate 0.25 L/min - tolerance +/- 25%



**3120422 ADJUSTER FOR OUTLET T&P YELLOW**  
flow rate 2.5 L/min - tolerance +/- 25%



**D120054 ADJUSTER INLET T&P GREY**  
flowrate 6 L/min



**D120058 ADJUSTER INLET T&P ORANGE**  
flowrate 20 L/min



**D120055 ADJUSTER INLET T&P WHITE**  
flowrate 10 L/min







Suitable for:

**D120053 ADJUSTER INLET T&P YELLOW**  
flowrate 5.5 L/min



**3120431 COIL T&P 12Vac 50/60Hz**  
for solenoid valves T&P



**D120090 COIL T&P 120V 60Hz 8VA**  
for solenoid valves T&P



**3120432 COIL T&P 24Vac 50/60Hz**  
for solenoid valves T&P



**3120404 SOLENOID VALVE T&P 1 WAY 90°**  
230V 50/60Hz - max. temperature 90°C  
inlet 3/4" con riduttore di portata 10 L/min  
outlet ø 10.5 mm



LUXIA N23787

**3120608 ADJUSTER FOR OUTLET T&P DARK BROWN**  
flow rate 1.2 L/min - tolerance +/- 25%



## LUXIA

Suitable for:

**D120059 ADJUSTER OUTLET T&P BLUE**  
flow rate 8 L/min - tolerance +/- 25%



**D120092 COIL T&P 12Vdc**  
for solenoid valves T&P



**3120433 COIL T&P 220V 50/60Hz**  
for solenoid valves T&P



**D120093 COIL T&P 24Vdc**  
for solenoid valves T&P



**3120421 ADJUSTER FOR OUTLET T&P BLACK**  
flow rate 5 L/min - tolerance +/- 20%



**3120568 ADJUSTER FOR OUTLET T&P GREEN**  
flow rate 3 L/min - tolerance +/- 25%





Suitable for:

**3120391 ADJUSTER FOR OUTLET T&P LIGHT BLUE**  
flow rate 1 L/min - tolerance +/- 25%



**3120423 ADJUSTER FOR OUTLET T&P ORANGE**  
flow rate 0.5 L/min - tolerance +/- 25%



**3120386 ADJUSTER FOR OUTLET T&P WHITE**  
flow rate 0.8 L/min - tolerance +/- 25%



**D120056 ADJUSTER INLET T&P BRONZE**  
flowrate 12 L/min



**D120057 ADJUSTER INLET T&P LIGHT BROWN**  
flowrate 16 L/min



**D120052 ADJUSTER INLET T&P RED**  
flowrate 3 L/min



# LUXIA

Suitable for:

**3120387 ADJUSTER FOR OUTLET T&P LIGHT BROWN**  
flow rate 1.5 L/min - tolerance +/- 25%



**3120424 ADJUSTER FOR OUTLET T&P RED**  
flow rate 0.25 L/min - tolerance +/- 25%



**3120422 ADJUSTER FOR OUTLET T&P YELLOW**  
flow rate 2.5 L/min - tolerance +/- 25%



**D120054 ADJUSTER INLET T&P GREY**  
flowrate 6 L/min



**D120058 ADJUSTER INLET T&P ORANGE**  
flowrate 20 L/min



**D120055 ADJUSTER INLET T&P WHITE**  
flowrate 10 L/min





Suitable for:

**D120053 ADJUSTER INLET T&P YELLOW**  
flowrate 5.5 L/min



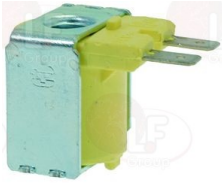
**3120431 COIL T&P 12Vac 50/60Hz**  
for solenoid valves T&P



**D120090 COIL T&P 120V 60Hz 8VA**  
for solenoid valves T&P



**3120432 COIL T&P 24Vac 50/60Hz**  
for solenoid valves T&P



## LUXIA



Suitable for:

**D120059 ADJUSTER OUTLET T&P BLUE**  
flow rate 8 L/min - tolerance +/-25%



**D120092 COIL T&P 12Vdc**  
for solenoid valves T&P



**3120433 COIL T&P 220V 50/60Hz**  
for solenoid valves T&P



**D120093 COIL T&P 24Vdc**  
for solenoid valves T&P



## Springs

**3250234 DOOR SPING  $\varnothing$  12x275 mm**  
for DISHWASHER T40-T45-T50



LUXIA L7010

**3250031 SPRING FOR DOOR BBSR21**



LUXIA 3004010

LUXIA 3009555

**5023283 UPRIGHT SPRING SUPPORT  $\varnothing$  30x10x9 mm**



LUXIA 3004012



Suitable for:

# LUXIA



Suitable for:

## Supports for wash and rinse arms

**5060719 SUPPORT ARM ASSEMBLY WITH PIN STAINL. ST**  
for Dishwasher (LUXIA) OCEANO50 - OCEANO60 - T50  
for Glasswasher/Cupwasher (LUXIA) OCEANO35  
OCEANO40 - T40 - T45



LUXIA L7094

**5027005 FLAT GASKET RUBBER  $\varnothing$  77x48x2 mm**  
for Dishwasher (LUXIA) K1000QBS - K502QBS  
OCEANO50 - OCEANO60 - T50  
for Glasswasher/Cupwasher (LUXIA) K11QS - K12QS  
K400QBS - OCEANO35 - OCEANO40 - T40 - T45



LUXIA L5108

**5027006 RING NUT PLASTIC 1"1/2**  
external  $\varnothing$  69 mm  
for Dishwasher (LUXIA) K1000QBS - K502QBS  
OCEANO50 - OCEANO60 - T50  
for Glasswasher/Cupwasher (LUXIA) K11QS - K12QS  
K400QS - OCEANO35 - OCEANO40 - T40 - T45



LUXIA L5067

**5052439 SCREW TIPLESS**  
for Dishwasher (LUXIA) OCEANO50 - OCEANO60 - T50  
for Dishwasher hood type (LUXIA) POLY1000  
POLY1500 - POLY2000



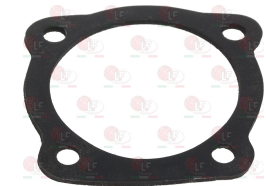
LUXIA L7111

**3243517 WASH AND RINSE ARM ASSEMBLY SUPPORT**  
for Dishwasher hood type (LUXIA) K1300 - K660



LUXIA L3366

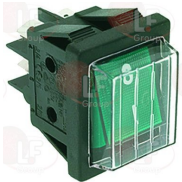
**3786866 GASKET FOR WASH ARM SUPPORT**  
dimensions 70x70x2 mm - middle hole  $\varnothing$  56 mm



LUXIA L1892

## Switches

**3319012 BIPOLAR SWITCH GREEN 16A 250V**  
16(4)A 250V - max. temperature 120°C  
with indicator light and push-button cap  
mounting hole 22x30 mm - silk screen print 0 - I



LUXIA N23327

**3319780 BLOCK CONNECTION WHITE 22x30 mm**



**3319779 BLOCK CONNECTIONS BLACK 22x30 mm**



**3319782 FRAME SAFETY 2 SIDES BLACK 22x30 mm**





Suitable for:

**3319783 FRAME SAFETY 4 SIDES BLACK 22x30 mm**



# LUXIA



Suitable for:

**3319501 PUSH-BUTTON PROTECTION CAP**  
external dimensions 29x36 mm  
for switches with mounting hole 22x30 mm



**5037924 BOARD WITH 2 PUSH-BUTTONS**  
1 bipolar switch  
1 push-button unipolar  
mounting hole 28x50 mm  
for Dishwasher (LUXIA) OCEANO40 - OCEANO50  
OCEANO60  
for Dishwasher hood type (LUXIA) POLY1000  
POLY1500  
for Glasswasher/Cupwasher (LUXIA) OCEANO35



LUXIA L7210

**3319920 BIPOLAR SWITCH BLACK 16A 250V**



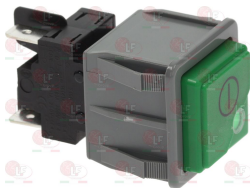
LUXIA L7070

LUXIA 15812

**1319082 SINGLE-POLE PUSH BUTTON 16A 250V**



**3319096 GREEN BIPOLAR SWITCH 250V**  
mounting hole 28x28 mm



LUXIA 15849

**3319920 BIPOLAR SWITCH BLACK 16A 250V**



LUXIA L7070

LUXIA 15812

**3319571 HOUSING FOR PUSH-BUTTON SQUARE GREY**  
mounting hole 28x28 mm - for push-button 23x23 mm



LUXIA 15815

**3319647 PUSH-BUTTON SQUARE GREEN 23x23mm "ON/OFF"**

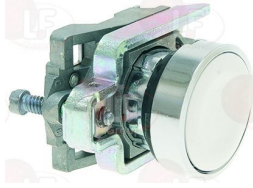


LUXIA 15874



Suitable for:

**3600046** PUSH-BUTTON SMOOTH MATT WHITE ZB4BA1  
SCHNEIDER  
mounting hole  $\varnothing$  22 mm



LUXIA 3002053

**7102367** CONTACT SCHNEIDER ZBE-102  
contact NC 10A



Suitable for:

**3454077** CONTACT SCHNEIDER ZBE-101  
NO contact 10A

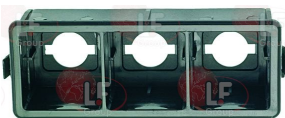


**3319734** THRIPLE SWITCH BLOCK  
for Dishwasher hood type (LUXIA) K1300



LUXIA L2037

**3319619** HOUSING PUSH-BUTTON BLACK /3 SQUA. BUTTO  
mounting hole 28x74 mm - for push-button 23x23 mm



**3319920** BIPOLAR SWITCH BLACK 16A 250V



LUXIA L7070

LUXIA 15812

**3319613** PUSH-BUTTON SQUARE BLACK 23x23mm "ON/OFF"  
with control window



**1319082** SINGLE-POLE PUSH BUTTON 16A 250V



Suitable for:

Suitable for:

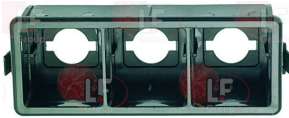
**3319186 TRIPLE SWITCH BLOCK**  
 2 buttons + 1 switch  
 for Dishwasher (LUXIA) K1000QBS - K400QS - K502QBS  
 for Dishwasher hood type (LUXIA) K660  
 for Glasswasher/Cupwasher (LUXIA) K10QT - K11QS  
 K12QS



LUXIA L2034

LUXIA 2034

**3319619 HOUSING PUSH-BUTTON BLACK /3 SQUA. BUTTO**  
 mounting hole 28x74 mm - for push-button 23x23 mm



**1319082 SINGLE-POLE PUSH BUTTON 16A 250V**



**3319920 BIPOLAR SWITCH BLACK 16A 250V**



LUXIA L7070

LUXIA 15812

**3319613 PUSH-BUTTON SQUARE BLACK 23x23mm "ON/OFF"**  
 with control window



## Telethermometers

**3441053 THERMOMETER 70x15 mm 0-120°C**  
 plastic case  
 covered capillary covered 1700 mm  
 bulb  $\varnothing$  6x26 mm  
 for tank/boiler



LUXIA L7062

## Thermostats

**3444282 SINGLE-PHASE THERMOSTAT 90-110°C**  
 with manual reset  
 covered capillary 1500 mm  
 bulb  $\varnothing$  6.5x95 mm  
 15A 250V



LUXIA 2000430

**3444280 SINGLE-PHASE THERMOSTAT 0-90°C**  
 covered capillary 1500 mm  
 bulb  $\varnothing$  6.5x90 mm  
 15A 250V  
 with adjusting screw



LUXIA L2060

LUXIA 107071

LUXIA 2060



Suitable for:

# LUXIA



Suitable for:

## 3444133 SINGLE-PHASE THERMOSTAT 30-90°C

covered capillary 2200 mm  
bulb  $\varnothing$  6.5x95 mm  
15A 250V  
D shaft  $\varnothing$  6x4.6 mm



LUXIA 107072

## Tubing and hoses

**3248020 PUMP OUTLET HOSE**  
internal  $\varnothing$  30 mm  
for Dishwasher (LUXIA) K10



LUXIA L3102

**3248021 PUMP INLET HOSE**  
internal  $\varnothing$  30 mm  
for Dishwasher (LUXIA) K10



LUXIA L3100

## Wash and rinse arms for warewashers

**5052438 IMPELLER WASHING stainless steel 500 mm**  
for Dishwasher (LUXIA) OCEANO50 - OCEANO60 - T50



LUXIA L7091

**3243336 BUSHING FOR DRUM SPIDER**  
for Dishwasher (LUXIA) 502Q  
for Dishwasher hood type (LUXIA) 1000



LUXIA L3360

LUXIA L7083

**3743366 CENTRAL INSERT WASH IMPELLER**  
for Dishwasher (LUXIA) OCEANO50 - OCEANO60 - T50  
for Dishwasher hood type (LUXIA) POLY1000  
POLY1500 - POLY2000  
for Glasswasher/Cupwasher (LUXIA) OCEANO35  
OCEANO40 - T40 - T45



LUXIA L7055

**5018396 NUT FOR IMPELLER stainless steel**  
for Dishwasher (LUXIA) OCEANO50 - OCEANO60 - T50  
for Glasswasher/Cupwasher (LUXIA) OCEANO35  
OCEANO40 - T40 - T45



LUXIA L7102





Suitable for:

**3743128 RINSE ARM END CAP**  
for all models  
for Dishwasher (LUXIA)



LUXIA L5021

**3501177 STAINLESS STEEL RINSE JET**  
thread pitch M5  
for Dishwasher (LUXIA) - Series K



LUXIA L3339

**3243541 WASH AND RINSE ARM ASSEMBLY BOSS**  
complete with bushings  
for Dishwasher (LUXIA) K1000QBS - K400QS - K502QBS  
for Dishwasher hood type (LUXIA) K660  
for Glasswasher/Cupwasher (LUXIA) K100T - K110S  
K12QS



LUXIA L5030

**3243343 DRUM SPIDER LOCKING NUT**



LUXIA L3381

**3501177 STAINLESS STEEL RINSE JET**  
thread pitch M5  
for Dishwasher (LUXIA) - Series K



LUXIA L3339

# LUXIA



Suitable for:

**5052439 SCREW TIPLESS**  
for Dishwasher (LUXIA) OCEANO50 - OCEANO60 - T50  
for Dishwasher hood type (LUXIA) POLY1000  
POLY1500 - POLY2000



LUXIA L7111

**3743692 WASH ARM RING NUT**  
for Dishwasher (LUXIA) T50  
for Glasswasher/Cupwasher (LUXIA) T40 - T45



LUXIA L7054

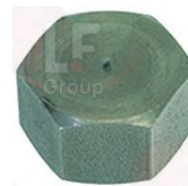
**3243336 BUSHING FOR DRUM SPIDER**  
for Dishwasher (LUXIA) 502Q  
for Dishwasher hood type (LUXIA) 1000



LUXIA L3360

LUXIA L7083

**3743128 RINSE ARM END CAP**  
for all models  
for Dishwasher (LUXIA)



LUXIA L5021

**3243344 STAINLESS STEEL SPINDLE NUT**



LUXIA L3380



Suitable for:

**3243891 STAINLESS STEEL WASH ARM**  
without lateral hole  
for Dishwasher (LUXIA) K400QS - K502QBS



LUXIA L5047

**3743129 WASH ARM WITH CAP AND JETS**  
for Dishwasher (LUXIA) K400QS - K502QBS - T50  
for Glasswasher/Cupwasher (LUXIA) T45



LUXIA L3304

LUXIA L7417

LUXIA L5049

LUXIA L5049+...

**3243540 WASH ARM ASSEMBLY BOSS**  
without bushings  
for Dishwasher hood type (LUXIA) K1300



LUXIA L5032

**3743068 WASH ARM ø 25x215 mm**  
without lateral hole  
for Dishwasher (LUXIA) K1000QBS  
for Dishwasher hood type (LUXIA) K1300 - K660



LUXIA L5040

**3243335 4-WAY WASH AND RINSE BOSS**  
for Dishwasher (LUXIA) 502Q  
for Dishwasher hood type (LUXIA) 1000



LUXIA L3375

# LUXIA



Suitable for:

**3243892 STAINLESS STEEL WASH ARM**  
with lateral hole  
for Dishwasher (LUXIA) K400QS - K502QBS



LUXIA L5048

**3243522 BUSHING FOR ARM ASSEMBLY BOSS**



LUXIA L3361

**3743069 WASH ARM ø 25x215 mm**  
with lateral hole  
for Dishwasher (LUXIA) K1000QBS  
for Dishwasher hood type (LUXIA) K1300 - K660



LUXIA L5041

**3243336 BUSHING FOR DRUM SPIDER**  
for Dishwasher (LUXIA) 502Q  
for Dishwasher hood type (LUXIA) 1000



LUXIA L3360

LUXIA L7083



Suitable for:

**3243343 DRUM SPIDER LOCKING NUT**



LUXIA L3381

**3243344 STAINLESS STEEL SPINDLE NUT**



LUXIA L3380

# LUXIA

Suitable for:

**5006765 SELF-TAPPING SCREW  $\varnothing$  3.5x9.5 mm**  
stainless steel - cylinder head  
cross recessed - C type end  
UNI 6954 - DIN 7981 - ISO 7049



LUXIA L3410



## Wash jets and accessories

**3243340 COMPLETE RINSE JET**



LUXIA L3325

LUXIA L3410

**5006038 RINSE NOZZLE CPL**



LUXIA L3325

**3501226 STAINLESS STEEL JET**



LUXIA 2200114

**3086001 RING NUT 3/8" F WITH MESH**



LUXIA 2200116

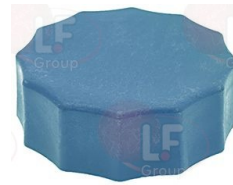
LUXIA 2200117

**3743761 STRAIGHT WASH JET**



LUXIA 80300

**3743754 CAP FOR END JET**



LUXIA 80304

**3743760 COLLAR FOR WASH JET**



LUXIA 80303

**3743762 COLLAR FOR WASH JET**

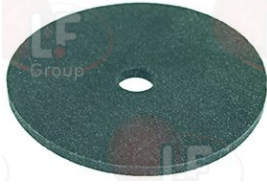


LUXIA 80301



Suitable for:

**3186437 GASKET FLAT EPDM  $\varnothing$  40x5.5x2 mm**  
for terminal cap



LUXIA 80305

# LUXIA



Suitable for:

## Washing baskets and accessories

**3055452 CUTLERY RACK 500x500x106 mm**  
in plastic



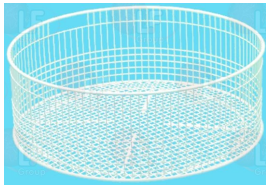
LUXIA L6301

**3055483 GLASS RACK  $\varnothing$  400x180 mm**  
in plastic



LUXIA L3502

**3055081 GLASS RACK  $\varnothing$  455x170 mm**  
in plastic covered wire  
 $\varnothing$  455 mm  
height 170 mm  
bottom ring  $\varnothing$  390 mm



LUXIA L3503

**3055478 GLASS RACK 350x350x150mm**



LUXIA L3510

LUXIA L7185

**3055010 GLASS RACK 500x500x120 mm**  
in plastic covered wire



LUXIA C44

**3012002 ANGLE FOOT FOR BASKET 110x110 mm**  
colour: white



**3055451 PLATE RACK 500x500x106 mm**  
in plastic



LUXIA L6297



LUXIA



Suitable for:

Suitable for:

## Watertight seals and rings

5017523 SEALING RING 42x30x7 mm  
double lip retainer



LUXIA 13024

The data herewith contained may change without notice and LF SpA cannot be held responsible for possible errors stated or resulting by the use of this document. All rights reserved. No part of this publication may be reproduced without written permission by LF SpA.



## Distributing Components, Spare Parts & Accessories in original quality worldwide

- 
- LF SpA HEADQUARTERS**  
via Voltri, 80 - 47522 Cesena (FC) ITALY  
Tel. +39 0547 34 11 11 - Fax +39 0547 34 11 10  
[www.lfricambi724.it](http://www.lfricambi724.it) - [info@lfricambi.it](mailto:info@lfricambi.it)  
Export Dept. Tel. +39 0547 34 11 50 - Fax +39 0547 34 11 55  
[www.lfspareparts724.com](http://www.lfspareparts724.com) - [export@lfspareparts.com](mailto:export@lfspareparts.com)
- LF SpA HOUSEHOLD COMPONENTS DIVISION**  
Via Padriciano, 99 - AREA Science Park - 34149 Trieste (TS) ITALY  
Tel. +39 0547 34 12 42 - Fax +39 0547 34 12 48  
[www.lfspareparts724.com](http://www.lfspareparts724.com) - [info@lfspareparts.com](mailto:info@lfspareparts.com)
- EPGC Sas FRANCE**  
13, Rue des Forts - 59960 Neuville en Ferrain  
Tel. +33 (0)3 20 25 06 21 - Fax +33 (0)3 20 25 34 12  
[www.epgc.com](http://www.epgc.com) - [epgc@epgc.com](mailto:epgc@epgc.com)
- LF GmbH GERMANY**  
Junkersstrasse, 3 - D-82178 Puchheim - München  
Tel. +49 89 89 45 78 66 - Fax +49 89 89 45 78 88  
[www.lfersatzteile724.de](http://www.lfersatzteile724.de) - [info@lfersatzteile.de](mailto:info@lfersatzteile.de)
- LF China REPUBLIC OF CHINA**  
Room 403, No.2, Huadu Mansion, Lane 422, Huanghua Rd.  
Minhang Dist. - 201103 Shanghai  
Tel. +86 (0)21 33 53 66 31 - Fax +86 (0)21 33 53 66 32  
[www.lfspareparts724.com](http://www.lfspareparts724.com) - [china@lfspareparts.com](mailto:china@lfspareparts.com)
- OOO LF RUSSIAN FEDERATION**  
Ul. Anatoliya Zhivova, 8 - office 1 - 123100 Moscow  
Tel./Fax +7 495 725 26 53  
[www.lfspareparts724.ru](http://www.lfspareparts724.ru) - [info@lfspareparts.ru](mailto:info@lfspareparts.ru)
- LF Repuestos Horeca S.L.U. SPAIN**  
Poligono Industrial Carpetania - C/Miguel Faraday, 8 - 28906 Getafe  
Tel. +34 91 477 91 00 - Fax +34 91 477 90 81  
[www.lfrepuestos-horeca724.es](http://www.lfrepuestos-horeca724.es) - [info@lfrepuestos.es](mailto:info@lfrepuestos.es)
- LF Scandinavia Aps - LF Spareparts S.p.A. DENMARK**  
Nupark, 51 - 7500 Holstebro  
Tel. +45 70 70 77 33  
[www.lfspareparts724.dk](http://www.lfspareparts724.dk) - [denmark@lfspareparts.dk](mailto:denmark@lfspareparts.dk)
- LF SpA Cesena (IT) Swiss Branch Steinhausen SWITZERLAND**  
Sennweidstrasse, 45 - CH-6312 Steinhausen  
Tel. +41 (0)41 760 15 80/1 - Fax +41 (0)41 760 15 85  
[www.lfersatzteile724.ch](http://www.lfersatzteile724.ch) - [info@lfersatzteile.ch](mailto:info@lfersatzteile.ch)
- LF Spare Parts Ltd. UNITED KINGDOM**  
A10a Lakeside Business Park, Broadway Lane  
South Cerney, Gloucestershire GL7 5XL  
Tel. +44 (0)1285 86 16 25 - Fax +44 (0)1285 86 39 49  
[www.lfspareparts724.co.uk](http://www.lfspareparts724.co.uk) - [info@lfspareparts.co.uk](mailto:info@lfspareparts.co.uk)
- LF Central Est Europe S.r.o. CZECH REPUBLIC**  
Antala Staska 1859/34  
14000 Praha 4 - KRC  
Tel. +420 730 156 910  
[www.lfspareparts724.cz](http://www.lfspareparts724.cz) - [info@lfspareparts.cz](mailto:info@lfspareparts.cz)
- LF SPARE PARTS INC. USA**  
**Legal address:**  
155 Office Plaza Dr - Suite A - Tallahassee, FL 32301  
**Business/Mailing address:**  
1100 South Tower, 225 Peachtree St., N.E. - Atlanta, GA 30303, USA  
Tel. +1-404-525-2600 - Fax +1-404-586-3528  
[www.lfspareparts724.us](http://www.lfspareparts724.us) - [info@lfspareparts.us](mailto:info@lfspareparts.us)  
Tel. West Coast and Midwest: 206-349-1525 Sauro  
Tel. East Coast and the Caribbean: 786-817-1764 Luis
- 
- AUSTRALIA AND NEW ZEALAND**  
[www.lfspareparts724.com](http://www.lfspareparts724.com)  
[andrea.calvio@lfspareparts.com](mailto:andrea.calvio@lfspareparts.com)
- AUSTRIA**  
[www.lfersatzteile724.at](http://www.lfersatzteile724.at)  
[info@lfersatzteile.at](mailto:info@lfersatzteile.at)
- BALKAN COUNTRIES**  
[www.lfspareparts724.com](http://www.lfspareparts724.com)  
[matija.ramov@lfspareparts.com](mailto:matija.ramov@lfspareparts.com)
- BALTIC COUNTRIES**  
[www.lfspareparts724.com](http://www.lfspareparts724.com)  
[inara.silina@lfspareparts.com](mailto:inara.silina@lfspareparts.com)
- LATIN AMERICA AND THE CARRIBEANS**  
[www.lfrepuestos-horeca724.es](http://www.lfrepuestos-horeca724.es)  
[export@lfrepuestos.es](mailto:export@lfrepuestos.es)
- POLAND**  
[www.lfspareparts724.pl](http://www.lfspareparts724.pl)  
[info@lfspareparts.pl](mailto:info@lfspareparts.pl)
- SOUTH KOREA**  
[www.lfspareparts724.com](http://www.lfspareparts724.com)  
[fabio.doni@lfspareparts.com](mailto:fabio.doni@lfspareparts.com)
- TURKEY**  
[www.lfyedekparca724.com](http://www.lfyedekparca724.com)  
[export@lfspareparts.com](mailto:export@lfspareparts.com)