



# Spare parts for the professional sector: Warewashing equipment



Suitable for:

# LAMBER



This catalogue is automatically generated.  
Therefore, the sequence of the items might  
not be always shown at best.  
Updates will be issued in case of additions  
and/or amendments.  
*Suitable universal spare parts may not be included*

Rel. 2018-02261136





Suitable for:

# LAMBER



Suitable for:

## Air traps

**3060114 AIR CHAMBER  $\varnothing$  40x130 mm**  
hose end fitting  $\varnothing$  9 mm - threaded connection M12x  
complete with fastening nut  
for Glasswasher/Cupwasher (LAMBER) - Series DSP  
MINIROTOR



LAMBER 0200019

**3786380 GASKET FOR AIR CHAMBER**  
for Glasswasher/Cupwasher (LAMBER) - Series DSP



LAMBER 0200289

**3743234 NUT FOR RINSE ARM FASTENING M12x1**  
for Dishwasher (LAMBER) DSP4  
for Glasswasher/Cupwasher (LAMBER) DSP1 - DSP2  
DSP3 - MINIBAR



LAMBER 0800205

**3060104 AIR CHAMBER  $\varnothing$  40x80 mm**  
hose end fitting  $\varnothing$  9.5 mm - threaded fitting  $\varnothing$  12



LAMBER 0200004

**3786380 GASKET FOR AIR CHAMBER**  
for Glasswasher/Cupwasher (LAMBER) - Series DSP



LAMBER 0200289

**3060009 AIR CHAMBER  $\varnothing$  49x155 mm**  
hose end fitting  $\varnothing$  5.5 mm  
for Dishwasher (LAMBER) PT850



LAMBER 0200260

**3060027 AIR CHAMBER COMPLETE 53x38x90 mm**  
hose end fitting  $\varnothing$  6 mm  
complete with flat gasket and fastening nut



LAMBER 0200090

Suitable for:

**3060082 AIR CHAMBER 40x40x85 mm**  
complete with nylon gasket and self-lock nut  
for Dishwasher (LAMBER)  
for Dishwasher (LAMBER) F85 - F92 - F94 - 050F  
075F



LAMBER 0201455

**3786381 GASKET FOR AIR CHAMBER**  
for Dishwasher (LAMBER)



LAMBER 0200295

**3060075 HOSE END FITTING M12**  
hose-end coupling external  $\varnothing$  6 mm  
for Glasswasher/Cupwasher (LAMBER) - Series DSP



LAMBER 0200147

Suitable for:

**3060074 BRASS HOSE-END**



LAMBER 0200638

**5049213 GASKET NYLON  $\varnothing$  4.5x3x2 mm**



LAMBER 0200196

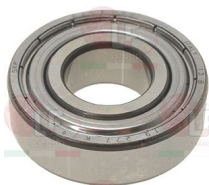
**5040050 SELF-TAPPING SCREW  $\varnothing$  3.9x9.5 mm**  
stainless steel - cylinder head  
cross recessed - C type end  
UNI 6954 - DIN 7981 - ISO 7049



LAMBER 0800187

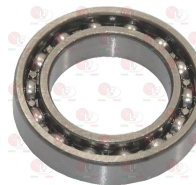
## Bearings

**D063040 BEARING 6203-2Z SKF**  
external  $\varnothing$  40mm - internal  $\varnothing$  17mm - thickness 12mm  
single box packaging



LAMBER 0802501

**7151267 BEARING 6804 NSK**  
ext.  $\varnothing$  32 mm - internal  $\varnothing$  20 mm - thickness 7 mm  
for Dishwasher conveyor type (LAMBER) LINEAR30  
for Dishwasher hood type (LAMBER) LINEAR40  
LINEAR60 - LINEAR80 - MSA  
for Pan/utensilwashing machines electric (LAMBER)  
LP



LAMBER 0802504



Suitable for:

# LAMBER



Suitable for:

## Boilers

**3024053 BOILER  $\varnothing$  240x540 mm**  
 2 holes for heating element  
 with insulating cover  
 for Dishwasher (LAMBER) LINEAR-MATIC 10  
 LINEAR-MATIC 20 - LINEAR-MATIC 33  
 LINEAR-MATIC 39 - LINEAR-MATIC 49  
 LINEAR-MATIC 59



LAMBER 0400266

**3024052 COMPLETE BOILER  $\varnothing$  115x500 mm**  
 for Dishwasher (LAMBER) F85 - F92 - 01F - 050F  
 075F  
 for Dishwasher hood type (LAMBER) L20 - L21



LAMBER 0400262

**3024048 COMPLETE BOILER  $\varnothing$  140x450 mm**  
 for Dishwasher (LAMBER) GS6  
 for Dishwasher hood type (LAMBER) L20 - L21 - L25  
 015/24L  
 for Pan/utensilwashing machines (LAMBER) LP31  
 LP38 - LP6 - LP8 - PT1500 - PT850 - P550  
 P700



LAMBER 0400261

## Bulb sheathes

**3187012 SHEATH  $\varnothing$  1/2"**  
 hose  $\varnothing$  6x100 mm



LAMBER 0300006

**3187010 BULB FRAME LOCKING NUT**  
 for Dishwasher hood type (LAMBER)  
 since 1/01/94  
 till 1/01/94 015/24L  
 for Dishwasher (LAMBER)  
 since 1/01/94  
 till 1/01/94 015/24L



LAMBER 0200176

Suitable for:

**3187007 THERMOSTAT SHEATH  $\varnothing$  1/2"**  
bulb length 110 mm



LAMBER 0200270

Suitable for:

**3187010 BULB FRAME LOCKING NUT**  
for Dishwasher hood type (LAMBER)  
since 1/01/94  
till 1/01/94 015/24L  
for Dishwasher (LAMBER)  
since 1/01/94  
till 1/01/94 015/24L



LAMBER 0200176

## Bushings

**3743245 PTFE BUSHING**  
internal  $\varnothing$  16 mm



LAMBER 0800175

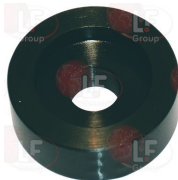
## Castors, rollers and accessories

**5042412 CONVEYOR ROLLER  $\varnothing$  24.5x8x15 mm**  
for Dishwasher conveyor type (LAMBER) LINEAR30  
LINEAR40 - LINEAR60 - LINEAR80  
for Dishwasher pull-through (LAMBER) MA-10 - MA-20  
MA-33 - MA-39 - MA-49 - MA-59



LAMBER 0500039

**5041838 ROLLER FOR COVER**  
 $\varnothing$  34x10x13 mm  
for Dishwasher hood type (LAMBER) DSP5 - GS25  
L18 - L20 - L21 - L24 - L25 - L305 - 015/24L



LAMBER 0800244

**3743145 FLAT WASHER M8**  
internal/external  $\varnothing$  8.4/16 mm - thickness 1.6 mm  
stainless steel - UNI 6592 - DIN 125 A - ISO 7089



LAMBER 0800028



Suitable for:

**3786404 GASKET NYLTITE  $\varnothing$  11.5x7.5x3.5 mm**



LAMBER 0200099

# LAMBER



Suitable for:

**5041837 SPACER M8**  
for Dishwasher hood type (LAMBER) DSP5 - GS25  
L18 - L20 - L21 - L24 - L25 - L305 - 015/24L



LAMBER 0800418

## Clamps

**3168117 CLAMP BLACK 4.8x430 mm - 100 PCS**



LAMBER 0300072

**3449464 HOSE CLAMP 20-32**  
for pipes  $\varnothing$  20÷32 mm  
made of stainless steel AISI 304  
height 9 mm and screw E7  
suitable for food industry



LAMBER 0200299

**3449456 HOSE CLAMP 50-70**  
for pipes  $\varnothing$  50÷70 mm  
made of stainless steel AISI 304  
height 9 mm and screw E7  
suitable for food industry



LAMBER 0200005

**3449474 HOSE CLAMP 50-70**  
for pipes  $\varnothing$  50÷70 mm  
made of stainless steel AISI 304  
height 12 mm and screw E7  
suitable for food industry



LAMBER 0200712

## Contact thermostats

**3444607 CONTACT THERMOSTAT 110°C**  
with manual reset



LAMBER 0300302

**1443006 CONTACT THERMOSTAT 55°C 16A 250V**  
automatic reset

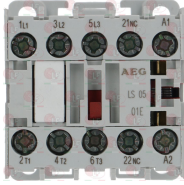


LAMBER 0300303



## Contactors

**3351209 CONTACTOR AEG LS05 9A 230V 4Kw**  
 coil 230V 50/60Hz  
 3 normally open contacts  
 1 normally closed auxiliary contact



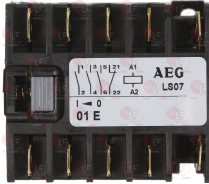
LAMBER 0300058

**7151265 CONTACTOR AEG LS07 7A 110V 3Kw**  
 coil 110V 50/60Hz  
 3 contacts NO  
 1 auxiliary contact NC  
 for Dishwasher conveyor type (LAMBER) LINEAR30  
 LINEAR40 - LINEAR60 - LINEAR80



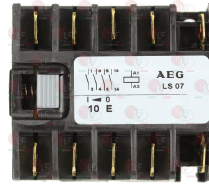
LAMBER 0301707

**3351207 CONTACTOR AEG LS07 7A 230V 3Kw**  
 coil 230V 50/60Hz  
 3 normally open contacts  
 1 normally closed auxiliary contact



LAMBER 0300392

**3351208 CONTACTOR AEG LS07 7A 230V 3Kw**  
 coil 230V 50/60Hz  
 3 normally open contacts  
 1 normally open auxiliary contact



LAMBER 0300059

**3351211 CONTACTOR AEG LS4K 9A 230V 4Kw**  
 coil 230V 50/60Hz  
 3 normally open contacts  
 1 normally closed auxiliary contact



LAMBER 0300390

**7151264 CONTACTOR SCHNEIDER LC1DT40P7**  
 40A - coil 230V 50/60Hz  
 4 contacts NO  
 1 auxiliary contact NO  
 1 auxiliary contact NC  
 for Dishwasher (LAMBER) A410 - M115 - M150 - M150A



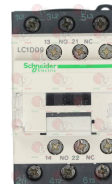
LAMBER 0301777

**3454060 CONTACTOR SCHNEIDER LC1D09B7**  
 9A 400V 4Kw - coil 24V 50/60Hz  
 3 normally open contacts  
 1 normally open auxiliary contact  
 1 normally closed auxiliary contact



LAMBER 0301700

**3454013 CONTACTOR SCHNEIDER LC1D09P7**  
 9A 400V 4Kw - coil 230V 50/60Hz  
 3 normally open contacts  
 1 normally open auxiliary contact  
 1 normally closed auxiliary contact



LAMBER 0300050



Suitable for:

# LAMBER



**5047351 CONTACTOR SCHNEIDER LC1D18B7**  
 18A - coil 24V 50/60Hz  
 3 contacts NO  
 1 auxiliary contact NO  
 1 auxiliary contact NC



LAMBER 0301703

Suitable for:

**7151262 CONTACTOR SCHNEIDER LC1D18M7**  
 18A 400V 7,5Kw - coil 220V 50/60Hz  
 3 contacts NO  
 1 auxiliary contact NO  
 1 auxiliary contact NC  
 for Dishwasher (LAMBER) L24 - L25 - 015/24L  
 for Pan/utensilwashing machines (LAMBER) A410  
 GS25 - LP6 - LP8 - M115 - M150 - M150A



LAMBER 0301736

**7151263 CONTACTOR SCHNEIDER LC1D18M7**  
 40A 400V 18,5Kw - coil 24V 50/60Hz  
 3 contacts NO  
 1 auxiliary contact NO  
 1 auxiliary contact NC  
 for Dishwasher conveyor type (LAMBER) LINEAR30  
 LINEAR40 - LINEAR60 - LINEAR80  
 for Dishwasher pull-through (LAMBER) MA-10 - MA-20  
 MA-33 - MATIC10 - MATIC20 - MATIC33 - MATIC33A  
 MATIC39 - M115 - M130 - M150 - M150A



LAMBER 0301705

**7100704 CONTACTOR SCHNEIDER LC1D25B7**  
 25A 400V 11Kw - coil 24V 50/60Hz  
 3 contacts NO  
 1 auxiliary contact NO  
 1 auxiliary contact NC  
 for Dishwasher conveyor type (LAMBER) LINEAR30  
 LINEAR40 - LINEAR60 - LINEAR80  
 for Dishwasher pull-through (LAMBER) LC350 - LC500  
 MA-10 - MA-20 - MA-33 - MA-39 - MA-49 - MA-59  
 MATIC10 - MATIC20 - MATIC33 - MATIC33A  
 MATIC39 - MATIC49 - MATIC49A - MATIC59  
 MATIC59A - M115 - M130 - M150 - M150A - M180  
 M180A



LAMBER 0301704

**7151260 CONTACTOR SCHNEIDER LC1K0601M7**  
 6A 400V 2.2Kw - coil 220/230V 50/60Hz  
 3 contacts NO  
 1 auxiliary contact NC  
 for Dishwasher (LAMBER) F85 - NS455 - 01F - 075F  
 for Dishwasher hood type (LAMBER) L21



LAMBER 0300060

**7151261 CONTACTORE SCHNEIDER LC1D32B7**  
 32A 400V 15Kw - coil 24Vac 50/60Hz  
 3 contacts NO  
 1 auxiliary contact NO  
 1 auxiliary contact NC  
 for Dishwasher conveyor type (LAMBER) LINEAR30  
 LINEAR40 - LINEAR60 - LINEAR80  
 for Dishwasher pull-through (LAMBER) LC350 - LC500  
 MA-10 - MA-20 - MA-33 - MA-39 - MA-49 - MA-59  
 MATIC10 - MATIC20 - MATIC33 - MATIC33A  
 MATIC39 - MATIC39A - MATIC49 - MATIC49A  
 MATIC59 - MATIC59A - M115 - M130 - M150  
 M150A - M180 - M180A



LAMBER 0301702





## Controllers and changeover switches

**3322148 CONTROLLER 11803F1 3 CAMS**  
120 seconds cycle  
230V 50/60Hz



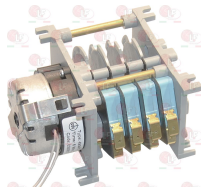
LAMBER 0300818

**3322231 CONTROLLER 4904F3 4 CAMS**  
1st cycle 60 seconds  
2nd cycle 90 seconds  
3rd cycle 120 seconds  
230V 50Hz  
without pin  
for Dishwasher (LAMBER) KD100 - K100 - K120  
OLG11S  
for Dishwasher hood type (LAMBER) L25 - 015/24L  
for Dishwasher (LAMBER) L23



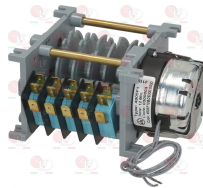
LAMBER 0300117

**7151253 CONTROLLER 4904F3 4 CAMS**  
1st cycle 60 seconds  
2nd cycle 120 seconds  
3rd cycle 180 seconds  
25-second rinse  
230V 50Hz



LAMBER 0300811

**3322323 CONTROLLER 4905F1 5 CAMS**  
12 minutes cycle  
230V 50/60Hz  
for Dishwasher hood type (LAMBER)  
since 1/01/00 L20 - L21



LAMBER 0300803

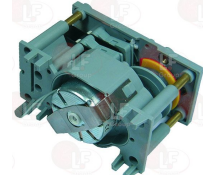
LAMBER 0300819

**3322223 CONTROLLER 7003F3P3 3 CAMS**  
6 minutes cycle  
230V 50Hz  
D-shaped pin  $\varnothing$  6x4.6 mm  
for Dishwasher (LAMBER) F85 - F92 - 01F - 045F  
075F  
for Dishwasher hood type (LAMBER) L20 - L21



LAMBER 0300807

**3322319 CONTROLLER 7802M1 2 CAMS**  
60 seconds cycle  
230V 50/60Hz  
for Dishwasher (LAMBER) F85 - F92 - 01F - 040F  
045F - 050F - 075F  
for Dishwasher hood type (LAMBER) L20 - L21 - L25  
015/24L  
for Glasswasher/Cupwasher (LAMBER) SUPERQS - S200  
S240 - S280 - S510



LAMBER 0300085



Suitable for:

# LAMBER



**3322209 CONTROLLER 7804F1 4 CAMS**  
 120 seconds cycle  
 230V 50/60Hz  
 without pin  
 for Dishwasher (LAMBER) 040F - 050F  
 for Glasswasher/Cupwasher (LAMBER) MINIBAR  
 SUPERQS - S200 - S280 - S510



LAMBER 0300143

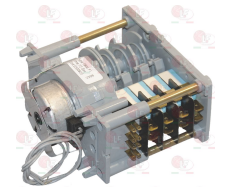
Suitable for:

**3322309 CONTROLLER 7804F1 4 CAMS**  
 20 minutes cycle  
 230V 50/60Hz  
 for regeneration  
 for Dishwasher (LAMBER)



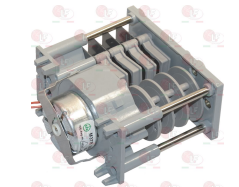
LAMBER 0300297

**7151254 CONTROLLER 7804F1 4 CAMS**  
 72-second cycle  
 230V 50/60Hz  
 for Glasswasher/Cupwasher (LAMBER) GS581



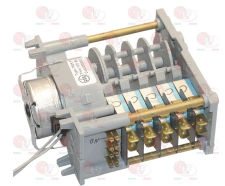
LAMBER 0300820

**7151256 CONTROLLER 7804F1 4 CAMS**  
 180-second cycle  
 230V 50/60Hz



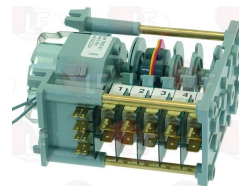
LAMBER 0300802

**7151255 CONTROLLER 7805F1 5 CAMS**  
 120-second cycle  
 230V 50/60Hz  
 for Dishwasher (LAMBER) DSP4 - DSP5 - GS800  
 GS900 - 040F - 050F  
 for Glasswasher/Cupwasher (LAMBER) DSP2 - DSP3  
 GS400 - SUPERQS - S200 - S240 - S260 - S280  
 S510



LAMBER 0300821

**3322224 CONTROLLER 7805M1 5 CAMS**  
 180 seconds cycle  
 230V 50Hz  
 for Dishwasher (LAMBER) GS6  
 for Glasswasher/Cupwasher (LAMBER) GS4



LAMBER 0300801

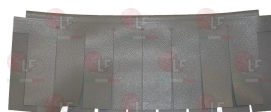
## Curtains

**5042862 CURTAIN SHAFT  $\varnothing$  8x666 mm**  
 for Dishwasher pull-through (LAMBER) MA-10 - MA-20  
 MA-33 - MA-39 - MA-49 - MA-59 - MATIC10  
 MATIC20 - MATIC33 - MATIC33A - MATIC39  
 MATIC49 - MATIC49A - MATIC59 - MATIC59A - M115  
 M150 - M150A - M180 - M180A  
 for Pan/utensilwashing machines pull-through  
 (LAMBER) LC-350 - LC-500 - M130



LAMBER 0500700

**3456017 DOUBLE CURTAIN 660x260 mm**  
 for Dishwasher conveyor type (LAMBER)  
 Series LINEAR  
 for Dishwasher pull-through (LAMBER)  
 Series MATIC



LAMBER 0500041

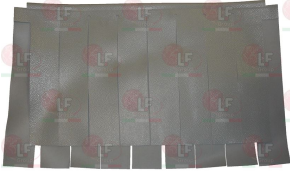


# LAMBER



Suitable for:

**3456018 DOUBLE CURTAIN 665x470 mm**  
for Dishwasher conveyor type (LAMBER)  
Series LINEAR  
for Dishwasher pull-through (LAMBER)  
Series MATIC



LAMBER 0500001

LAMBER 0500902

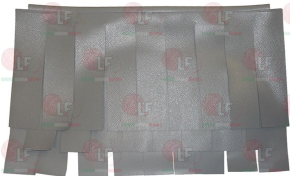
Suitable for:

**7109316 LONG CURTAIN PRE-WASH**  
dimensions 580x470 mm  
for Dishwasher pull-through (LAMBER) MATIC10  
MATIC20 - MATIC33 - MATIC33A - MATIC39  
MATIC49 - MATIC49A - MATIC59 - MATIC59A - M115  
M130 - M150 - M150A - M180 - M180A



LAMBER 0500901

**3456019 TRIPLE CURTAIN 665x470 mm**  
for Dishwasher conveyor type (LAMBER)  
Series LINEAR  
for Dishwasher pull-through (LAMBER)  
Series MATIC



LAMBER 0500904

## Door catches

**3398075 DOOR CATCH PLATE 38X25 mm**  
for Dishwasher (LAMBER) F85 - F92 - 01F - 040F  
045F - 050F - 075F  
for Glasswasher/Cupwasher (LAMBER) MINIBAR  
SUPERQS - S200 - S280



LAMBER 0800404

LAMBER 0800652

LAMBER 0800665

**3398035 NICKEL PLATED DOOR CATCH  $\varnothing$  13x24 mm**  
for DISHWASHER all models  
for Dishwasher (LAMBER) F85 - F92 - 01F - 040F  
045F - 050F - 075F



LAMBER 0800006

## Drain assembly

**3316139 DRAIN ASSEMBLY  $\varnothing$  1"1/2**  
for Dishwasher (LAMBER) 075F



LAMBER 0221331



Suitable for:

# LAMBER



Suitable for:

## Drain assembly

### 7107157 DRAIN ASSEMBLY $\varnothing$ 1"1/4

for Dishwasher (LAMBER) DSP26 - GS25 - 040F - 045F  
for Dishwasher pull-through (LAMBER) MA-39 - MA-49  
MA-59 - MATIC39 - MATIC49 - MATIC49A - MATIC59  
MATIC59A - M180 - M180A  
for Glasswasher/Cupwasher (LAMBER) DSP3 - GS4  
GS45 - GS5 - MINIBAR - SUPERQS - S200 - S240  
S260 - S280 - S400 - S460 - S480 - S510  
for Pan/utensilwashing machines pull-through  
(LAMBER) M130



LAMBER 0201478

### 3160198 ING NUT FOR INLET BOSS $\varnothing$ 1"1/4



LAMBER 0200080

### 3186606 O-RING 0144 EPDM

ring thickness 3.53 mm - internal  $\varnothing$  39.69 mm



LAMBER 0200056

### 3316140 RING NUT FOR DRAIN ASSEMBLY $\varnothing$ 1"1/2

for Dishwasher (LAMBER) 075F



LAMBER 0200058

## Drain hoses

### 3450057 DRAIN HOSE $\varnothing$ 24x1500 mm

straight hose internal  $\varnothing$  19 mm  
elbow hose internal  $\varnothing$  21.5 mm



LAMBER 0900006

### 3450033 DRAIN HOSE $\varnothing$ 33x3000 mm

sleeve internal  $\varnothing$  33 mm  
pipe internal  $\varnothing$  28 mm



LAMBER 0200112

**1449255 DRAIN HOSE ELISPIR  $\varnothing$  25x33 mm**  
 sold per meter  
 for Dishwasher pull-through (LAMBER) M150



LAMBER 0200051

## Drain plugs

**3448235 OVERFLOW PIPE  $\varnothing$  28x125 mm**  
 made of plastic  
 for Dishwasher (LAMBER) 040F - 045F  
 for Glasswasher/Cupwasher (LAMBER) MINIBAR  
 SUPERQS - S200 - S240 - S280 - S400 - S510



LAMBER 0200020

**3316072 ELBOW STEM FOR OUTLET  $\varnothing$  1"1/4**  
 complete with gasket  
 for Dishwasher (LAMBER) 040F - 045F  
 for Glasswasher/Cupwasher (LAMBER) MINIBAR  
 SUPERQS - S200 - S240 - S280 - S400 - S510



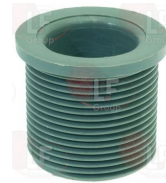
LAMBER 0200078

**3160198 INLET NUT FOR INLET BOSS  $\varnothing$  1"1/4**



LAMBER 0200080

**3316108 DRAIN ASSEMBLY  $\varnothing$  1"1/4**  
 for Dishwasher (LAMBER) 040F - 045F  
 for Glasswasher/Cupwasher (LAMBER) MINIBAR  
 SUPERQS - S200 - S240 - S280 - S400 - S510



LAMBER 0200128

**3186616 GASKET FLAT ASBESTOS FREE  $\varnothing$  35x27x1.5 mm**



LAMBER 0200408

**3186606 O-RING 0144 EPDM**  
 ring thickness 3.53 mm - internal  $\varnothing$  39.69 mm



LAMBER 0200056



Suitable for:

# LAMBER



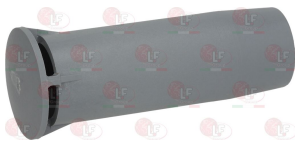
Suitable for:

**5045951 OVERFLOW PIPE  $\varnothing$  28x176 mm**  
 for DISHWASHER LAMBER SUPER QS  
 for Dishwasher (LAMBER) DSP26 - 040F - 045F  
 for Glasswasher/Cupwasher (LAMBER) DSP3 - MINIBAR  
 SUPERQS - S200 - S240 - S260 - S280 - S400  
 S460 - S480 - S510



LAMBER 0204007

**3448234 OVERFLOW PIPE  $\varnothing$  41x140 mm**  
 made of plastic  
 for Dishwasher (LAMBER) F85 - F92 - 01F - 050F  
 075F  
 for Dishwasher hood type (LAMBER)  
 till 1/10/00 L20 - L21



LAMBER 0200180

**3349466 DRAIN FITTING**  
 ring nut 1"1/4 - hose-end fitting  $\varnothing$  32 mm  
 with gasket and ring nut



LAMBER 0221302

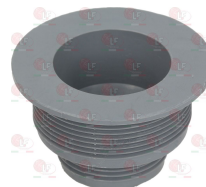
LAMBER 0221302+0200403

**3186332 GASKET FLAT EPDM  $\varnothing$  72x56x2 mm**  
 for drain assembly



LAMBER 0200173

**3316130 DRAIN ASSEMBLY  $\varnothing$  2" OUTLET  $\varnothing$  1"1/4**  
 for Dishwasher (LAMBER) F85 - F92 - 01F - 050F  
 075F  
 for Dishwasher hood type (LAMBER) L20 - L21 - L25  
 015/24L  
 for Pan/utensilwashing machines (LAMBER) P700



LAMBER 0200113

**3316072 ELBOW STEM FOR OUTLET  $\varnothing$  1"1/4**  
 complete with gasket  
 for Dishwasher (LAMBER) 040F - 045F  
 for Glasswasher/Cupwasher (LAMBER) MINIBAR  
 SUPERQS - S200 - S240 - S280 - S400 - S510



LAMBER 0200078

**3160198 ING NUT FOR INLET BOSS  $\varnothing$  1"1/4**



LAMBER 0200080



# LAMBER



Suitable for:

**3448288 OVERFLOW PIPE  $\varnothing$  42x350 mm**  
overall length 370 mm  
for Dishwasher hood type (LAMBER)  
till 1/01/99 L25 - 015/24L  
for Pan/utensilwashing machines (LAMBER) P550  
for Dishwasher (LAMBER) P550EK



LAMBER 0204003

**3349466 DRAIN FITTING**  
ring nut 1"1/4 - hose-end fitting  $\varnothing$  32 mm  
with gasket and ring nut



LAMBER 0221302

LAMBER 0221302+0200403

**3186332 GASKET FLAT EPDM  $\varnothing$  72x56x2 mm**  
for drain assembly



LAMBER 0200173

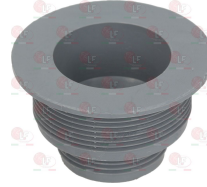
**3448289 OVERFLOW PIPE  $\varnothing$  45x217 mm**  
overall height 230 mm  
for Dishwasher hood type (LAMBER)  
since 1/09/01 L20 - L21



LAMBER 0200022

Suitable for:

**3316130 DRAIN ASSEMBLY  $\varnothing$  2" OUTLET  $\varnothing$  1"1/4**  
for Dishwasher (LAMBER) F85 - F92 - 01F - 050F  
075F  
for Dishwasher hood type (LAMBER) L20 - L21 - L25  
015/24L  
for Pan/utensilwashing machines (LAMBER) P700



LAMBER 0200113

**3316072 ELBOW STEM FOR OUTLET  $\varnothing$  1"1/4**  
complete with gasket  
for Dishwasher (LAMBER) 040F - 045F  
for Glasswasher/Cupwasher (LAMBER) MINIBAR  
SUPERQS - S200 - S240 - S280 - S400 - S510



LAMBER 0200078

**3160198 ING NUT FOR INLET BOSS  $\varnothing$  1"1/4**



LAMBER 0200080



Suitable for:

# LAMBER



**3448287 OVERFLOW PIPE  $\varnothing$  45x312 mm**  
overall length 330 mm  
for Dishwasher hood type (LAMBER)  
till 1/09/98 L25 - 015/24L L24



LAMBER 0200023

**3349466 DRAIN FITTING**  
ring nut 1"1/4 - hose-end fitting  $\varnothing$  32 mm  
with gasket and ring nut



LAMBER 0221302

LAMBER 0221302+0200403

**3186332 GASKET FLAT EPDM  $\varnothing$  72x56x2 mm**  
for drain assembly



LAMBER 0200173

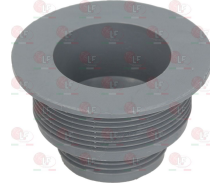
**5045701 OVERFLOW PIPE  $\varnothing$  45x410 mm**  
for DISHWASHER LAMBER P700EK-P2000  
for Pan/utensilwashing machines (LAMBER) PT800  
P2000 - P700



LAMBER 0204006

Suitable for:

**3316130 DRAIN ASSEMBLY  $\varnothing$  2" OUTLET  $\varnothing$  1"1/4**  
for Dishwasher (LAMBER) F85 - F92 - 01F - 050F  
075F  
for Dishwasher hood type (LAMBER) L20 - L21 - L25  
015/24L  
for Pan/utensilwashing machines (LAMBER) P700



LAMBER 0200113

**3316072 ELBOW STEM FOR OUTLET  $\varnothing$  1"1/4**  
complete with gasket  
for Dishwasher (LAMBER) 040F - 045F  
for Glasswasher/Cupwasher (LAMBER) MINIBAR  
SUPERQS - S200 - S240 - S280 - S400 - S510



LAMBER 0200078

**3160198 ING NUT FOR INLET BOSS  $\varnothing$  1"1/4**



LAMBER 0200080





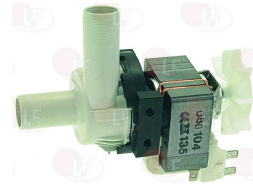
## Drain pumps

**3122404 DRAIN PUMP HANNING BE28B4-178**  
 100W 230V 50Hz  
 external inlet  $\varnothing$  30 mm - external outlet  $\varnothing$  24 mm



LAMBER

**3122402 DRAIN PUMP HANNING KD-22B3-001**  
 80W 230V 50Hz  
 inlet external  $\varnothing$  24 mm - outlet external  $\varnothing$  24 mm



LAMBER

## Electric pumps

**3122515 ELECTRIC PUMP AP 1001 0.75HP**  
 inlet external  $\varnothing$  45 mm - outlet external  $\varnothing$  40 mm  
 0.75HP 230V 50Hz 4A - Rpm 2850  
 capacitor 12  $\mu$ f - flow rate 280 L/min  
 for Dishwasher (LAMBER) 050F



LAMBER 0301203

**3122688 ELECTRIC PUMP AP 12410 1.50HP**  
 inlet external  $\varnothing$  63 mm - outlet external  $\varnothing$  54 mm  
 1.50HP 230/400V 50Hz



LAMBER

**3122024 SEAL MECHANICAL FOR SHAFT  $\varnothing$  12 mm**  
 metal seal internal  $\varnothing$  11 mm -  $\varnothing$  external 24 mm  
 height 15.5 mm  
 back. element internal  $\varnothing$  14 mm -  $\varnothing$  external 26 mm  
 height 8 mm



LAMBER 0200340

**3122508 ELECTRIC PUMP AP 904SX 0.20HP**  
 inlet external  $\varnothing$  28 mm - outlet external  $\varnothing$  28 mm  
 0.20HP 230V 50Hz 1.5A - Rpm 2850  
 capacitor 6.3  $\mu$ f - flow rate 90 L/min  
 for Glasswasher/Cupwasher (LAMBER)  
 since 1/01/96 DSP1 - DSP2 - DSP3 - MINIBAR  
 SUPERQS - S200 - S240 - S280  
 for Glasswasher/Cupwasher (LAMBER) S480EK



LAMBER 0300252

**3068010 CAPACITOR DUCATI ENERGIA 6,3 $\mu$ F**  
 450V 50/60Hz  
 operating temperature -25 +85°C  
 lead connection 6.35x0.8 mm  
 $\varnothing$  32xh55 mm



LAMBER 0300110



Suitable for:

**3068097 CAPACITOR ELECTRICAL 6.3µF**  
450V 50/60Hz - ø 30xh51 mm



LAMBER 0300110

# LAMBER



Suitable for:

**1186237 O-RING 03300 EPDM**  
ring thickness 2.62 mm - internal ø 75.87 mm



LAMBER 0209905

**5044219 ELECTRIC PUMP DWO200 2HP**  
inlet and outlet ø 2" F  
inlet ø extern 62.5 mm  
outlet ø extern 62.5 mm  
1.5 kW 230/400V 50Hz 6.3/3.7A  
flow rate 100-750 L/min  
for Dishwasher conveyor type (LAMBER) LINEAR30  
LINEAR40 - LINEAR60 - LINEAR80  
for Dishwasher pull-through (LAMBER) MA-10 - MA-20  
MA-33 - MATIC10 - MATIC20 - MATIC33 - MATIC33A  
M115 - M130 - M150 - M150A - M180 - M180A



LAMBER 0301250

**3122755 ELECTRIC PUMP EBARA DWO150 1.50HP**  
inlet and outlet ø 2" F  
inlet ø extern 62.5 mm  
outlet ø extern 62.5 mm  
1.1kW 220/400V 50Hz 4.4/2.5A  
for Dishwasher hood type (LAMBER)  
since 1/01/99 L25 - 015/24L  
for Dishwasher pull-through (LAMBER) MATIC33PRC



LAMBER 0301249

LAMBER 0301254

**1063906 BEARING 6203 ZZ NSK**  
external ø 40mm - internal ø 17mm - thickness 12mm



LAMBER 0802501

LAMBER 0802508

**1063901 BEARING 6204 DDU NSK**  
external ø 47mm - internal ø 20mm - thickness 14mm



LAMBER 0802505

Suitable for:

Suitable for:

**3122033 ELECTRIC PUMP FIR 1225SX 1.50HP**  
 inlet external  $\varnothing$  63 mm - outlet external  $\varnothing$  48 mm  
 1.50HP 220/400V 50Hz 4.8/2.8A - Rpm 2800  
 flow rate 625 L/min

**3122026 PUMP HOUSING GASKET FIR**



LAMBER 0300021

LAMBER 0200290

**3122024 SEAL MECHANICAL FOR SHAFT  $\varnothing$  12 mm**  
 metal seal internal  $\varnothing$  11 mm -  $\varnothing$  external 24 mm  
 height 15.5 mm  
 back. element internal  $\varnothing$  14 mm -  $\varnothing$  external 26 mm  
 height 8 mm



LAMBER 0200340

**3122802 ELECTRIC PUMP FIR 1227LH 2.70HP**  
 inlet external  $\varnothing$  63 mm - outlet external  $\varnothing$  48 mm  
 2.70HP 220/400V 50Hz - Rpm 2800  
 for Pan/utensilwashing machines (LAMBER) P700

**3122026 PUMP HOUSING GASKET FIR**



LAMBER 0300310

LAMBER 0200290

**3122024 SEAL MECHANICAL FOR SHAFT  $\varnothing$  12 mm**  
 metal seal internal  $\varnothing$  11 mm -  $\varnothing$  external 24 mm  
 height 15.5 mm  
 back. element internal  $\varnothing$  14 mm -  $\varnothing$  external 26 mm  
 height 8 mm



LAMBER 0200340



Suitable for:

# LAMBER



**3122322 ELECTRIC PUMP FIR 1241DX 1.50HP**  
 inlet external  $\varnothing$  63 mm - outlet external  $\varnothing$  54 mm  
 1.50HP 220/400V 50Hz 4.8/2.8A - Rpm 2800  
 flow rate 625 L/min.  
 for Dishwasher hood type (LAMBER)  
 till 1/01/99



LAMBER 0301243

Suitable for:

**3122026 PUMP HOUSING GASKET FIR**



LAMBER 0200290

**3122024 SEAL MECHANICAL FOR SHAFT  $\varnothing$  12 mm**  
 metal seal internal  $\varnothing$  11 mm -  $\varnothing$  external 24 mm  
 height 15.5 mm  
 back. element internal  $\varnothing$  14 mm -  $\varnothing$  external 26 mm  
 height 8 mm



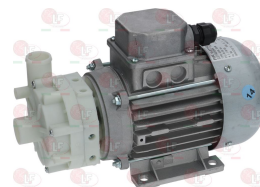
LAMBER 0200340

**3122078 ELECTRIC PUMP FIR 3981SX 0.50HP**  
 inlet external  $\varnothing$  45 mm - outlet external  $\varnothing$  40 mm  
 0.50HP 230V 50Hz 2.6A - Rpm 2800  
 capacitor 12.5  $\mu$ F



LAMBER 0300245

**3122320 ELECTRIC PUMP FIR 4226SX 0.50HP**  
 inlet external  $\varnothing$  28 mm - outlet external  $\varnothing$  28 mm  
 0.50HP 220/400V 50Hz 1.1/0.65A - Rpm 2800



LAMBER 0300205

**3122291 ELECTRIC PUMP FIR 4247SX 0.60HP**  
 inlet external  $\varnothing$  38 mm - outlet external  $\varnothing$  40 mm  
 0.60HP 230V 50Hz 3.5A - Rpm 2800  
 capacitor 10  $\mu$ F



LAMBER 0300024

**3068016 CAPACITOR DUCATI ENERGIA 10 $\mu$ F**  
 450V 50/60Hz  
 operating temperature -25 +85 $^{\circ}$ C  
 lead connector 6.35x0.8 mm  
 $\varnothing$  36xh58 mm



LAMBER 0300106



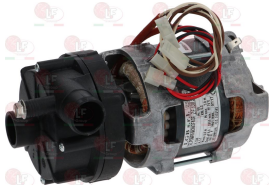
Suitable for:

**3068080 CAPACITOR ELECTRICAL 10µF**  
450V 50/60Hz - ø 30xh71 mm



LAMBER 0300106

**3122162 ELECTRIC PUMP LGB ZF130LH 0.27HP**  
inlet external ø 28 mm - outlet external ø 28 mm  
0.20kW 230V 50Hz - Rpm 2800  
capacitor 6.3 µf  
for Dishwasher (LAMBER) 040F  
for Glasswasher/Cupwasher (LAMBER) GS4 - S510



LAMBER 0300373

**3068097 CAPACITOR ELECTRICAL 6.3µF**  
450V 50/60Hz - ø 30xh51 mm



LAMBER 0300110

**3122421 ELECTRIC PUMP LGB ZF320SX 0.93HP**  
inlet external ø 45 mm - outlet external ø 40 mm  
0.93HP 230V 50Hz 3A - Rpm 2800  
capacitor 12.5 µF  
for Dishwasher (LAMBER) 01F - 045F - 050F - 075F  
for Dishwasher hood type (LAMBER) L20 - L21



LAMBER 0301204

## LAMBER



Suitable for:

**3122024 SEAL MECHANICAL FOR SHAFT ø 12 mm**  
metal seal internal ø 11 mm - ø external 24 mm  
height 15.5 mm  
back. element internal ø 14 mm - ø external 26 mm  
height 8 mm



LAMBER 0200340

**3068010 CAPACITOR DUCATI ENERGIA 6,3µF**  
450V 50/60Hz  
operating temperature -25 +85°C  
lead connection 6.35x0.8 mm  
ø 32xh55 mm



LAMBER 0300110

**1186237 O-RING 03300 EPDM**  
ring thickness 2.62 mm - internal ø 75.87 mm



LAMBER 0209905

**2101781 GASKET FOR PUMP HOUSING LGB**  
round section ø 3,6 mm - epdm 60 shore



LAMBER 0209902



Suitable for:

# LAMBER



Suitable for:

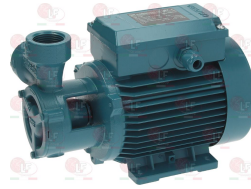
## Electric pumps for pressure increase

**3122454 ELECTRIC PUMP LGB PS46RH 0.60HP**  
 inlet  $\varnothing$  3/8"F - outlet  $\varnothing$  3/8"F  
 0.60HP 230V 50Hz 2.5A - Rpm 2800  
 capacitor 10 $\mu$ F  
 with 2 hose-end fittings  $\varnothing$  3/8"x 12mm  
 for pressure increase



LAMBER 0300362

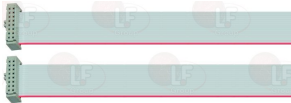
**3122153 ELECTRIC PUMP TM61E 0.45HP**  
 inlet  $\varnothing$  1"F - outlet  $\varnothing$  1"F  
 0.45HP 230V 50Hz 2.3A - rpm 2900  
 capacitor 10  $\mu$ f - flow rate 38 L/min  
 max pressure 6 ATM max temperature 90°C  
 for pressure increase



LAMBER 0300361

## Electrical cables

**7106573 FLAT CABLES 16 POLES 800 mm**  
 for board/button panel connection  
 for Dishwasher conveyor type (LAMBER) LINEAR30  
 LINEAR40 - LINEAR60 - LINEAR80  
 for Dishwasher pull-through (LAMBER) MATIC10  
 MATIC20 - MATIC33 - MATIC33A - MATIC39  
 MATIC49 - MATIC49A - MATIC59 - MATIC59A  
 MA150A



LAMBER 0306020

## Electronic controllers

**3394332 DIGITAL THERMOMETER EVCO FK100AP3V001**  
 power supply 12V - with probe  
 temperature range - 50 + 150°C  
 for Dishwasher conveyor type (LAMBER)  
 Series LINEAR

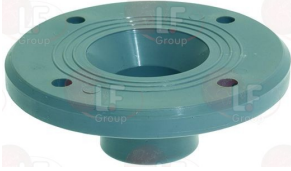


LAMBER 0500400



## Filters

**3160268 BOTTOM FILTER FRAME**  
 bottom  $\varnothing$  140 mm  
 overall height 50 mm  
 for Dishwasher hood type (LAMBER) L20 - L21



LAMBER 0200116

**3186761 FILTER FRAME GASKET**



LAMBER 0200098

**3160262 DRAIN FILTER UNION**  
 for Dishwasher (LAMBER) 040F - 045F  
 for Glasswasher/Cupwasher (LAMBER) DSP1 - DSP2  
 DSP3 - MINIBAR - SUPERQS - S200 - S280  
 S400EK - S510



LAMBER 0200127

**3160198 ING NUT FOR INLET BOSS  $\varnothing$  1"1/4**



LAMBER 0200080

**3186760 WASH FRAME GASKET**  
 for Glasswasher/Cupwasher (LAMBER) DSP1 - DSP2  
 DSP3 - MINIBAR - SUPERQS - S200 - S240 - S280  
 S400EK - S510



LAMBER 0201524

LAMBER 0208153

**3160260 FILTER FOR STAINL.STEEL TANK  $\varnothing$  165 mm**  
 height 50 mm  
 for Dishwasher (LAMBER) 040F - 045F



LAMBER 0200024

**3160261 FILTER FOR STAINL.STEEL TANK  $\varnothing$  215 mm**  
 height 65 mm  
 for Dishwasher (LAMBER) F85 - F92 - 01F - 050F  
 075F  
 for Dishwasher hood type (LAMBER) L20 - L21  
 for Pan/utensilwashing machines (LAMBER) P700



LAMBER 0200025



Suitable for:

# LAMBER



**3160263 FILTER OF STAINLESS STEEL  $\varnothing$  100x50 mm**  
for Glasswasher/Cupwasher (LAMBER) DSP1 - DSP2  
DSP3 - MINIBAR - SUPERQS - S200 - S240 - S280  
S400EK - S510



LAMBER 020247

Suitable for:

**3160402 FILTER OF STAINLESS STEEL 320 x 235 mm**  
for Dishwasher hood type (LAMBER) L25 - 015/24L



LAMBER 0400152

**7100429 SUCTION FILTER**  
for Glasswasher/Cupwasher (LAMBER) DSP3 - MINIBAR  
SUPERQS - S260 - S280 - S400EK - S460EK  
S480EK - S510 - S510EK  
for Dishwasher (LAMBER) DSP26 - 040F  
for Glasswasher/Cupwasher (LAMBER) GS4 - GS45  
GS5 - SUPERQS - S200 - S240 - S400 - S460  
S480 - S510



LAMBER 0202055

**3160411 SUCTION FILTER FOR PUMP  $\varnothing$  180 mm**  
for Dishwasher hood type (LAMBER) L24EK - L25  
L25EK - 015/24L  
for Dishwasher pull-through (LAMBER) MATIC10  
MATIC20 - MATIC33 - MATIC39 - MATIC49  
MATIC59



LAMBER 0202209

**3160413 GASKET FOR FILTER**  
for Dishwasher hood type (LAMBER) L24 - L24EK  
L25 - L25EK - 015/24L  
for Dishwasher pull-through (LAMBER) MATIC10  
MATIC20 - MATIC33 - MATIC39 - MATIC49  
MATIC59



LAMBER 0406052

**3160412 SUPPORT FOR FILTER**  
for Dishwasher hood type (LAMBER) L24 - L24EK  
L25 - L25EK - 015/24L  
for Dishwasher pull-through (LAMBER) MATIC10  
MATIC20 - MATIC33 - MATIC39 - MATIC49  
MATIC59



LAMBER 0406032



Suitable for:

Suitable for:

**5045368 TANK FILTER**  
 dimensions 250x250x40 mm  
 for Dishwasher pull-through (LAMBER) MATIC10  
 MATIC20 - MATIC33 - MATIC33A - MATIC49  
 MATIC49A - MATIC59 - MATIC59A - M115 - M130  
 M150A - M180 - M180A  
 for Dishwasher pull-through (LAMBER) M150

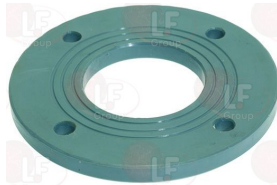
**7160002 TANK FILTER ø 215 mm**



LAMBER 0202008

LAMBER 0202223

**3160267 TOP FILTER FRAME**  
 external ø 140 mm



LAMBER 0200115

## Fittings

**1349163 FITTING ø 1"M-3/4"M REDUCED**

**3349323 NICHEL-PLATED FITTING ø 1/4"M-3/8"M**



LAMBER 0221322

LAMBER 0200040

**1349169 T-FITTING ø 1/2"F-1/2"F-1/2"F**



LAMBER 0200907

## Gaskets and seals

**5026755 GASKET FLAT ASBESTOS FREE ø 31x21x2mm**

**3786391 GASKET FLAT EPDM 100x100x3 mm**  
 for Dishwasher pull-through (LAMBER) MATIC10  
 MATIC20 - MATIC33 - MATIC39 - MATIC49  
 MATIC59



LAMBER 0200110

LAMBER 0201506

LAMBER 0203506



Suitable for:

# LAMBER



Suitable for:

**3786509 GASKET FLAT SILICONE  $\varnothing$  45x35x6 mm**  
for overflow pipe  
for Dishwasher conveyor type (LAMBER)  
Series LINEAR  
for Dishwasher pull-through (LAMBER)  
Series MATIC



LAMBER 0200304

**5043374 GASKET SHAPED  $\varnothing$  23x13x10 mm**  
for Dishwasher conveyor type (LAMBER) LINEAR30  
LINEAR40 - LINEAR60 - LINEAR80 - V1200 - V600  
for Dishwasher pull-through (LAMBER) LC350 - LC500  
MA-10 - MA-20 - MA-33 - MA-39 - MA-49 - MA-59  
MATIC10 - MATIC20 - MATIC33 - MATIC33A  
MATIC39 - MATIC49 - MATIC49A - MATIC59  
MATIC59A - M115 - M150A - M180



LAMBER 0200259

## Gears

**5044387 CHAIN 1/2"**  
for Dishwasher pull-through (LAMBER) LC350 - LC500  
MA-10 - MA-20 - MA-33 - MA-39 - MA-49 - MA-59  
MATIC10 - MATIC20 - MATIC33 - MATIC33A  
MATIC39 - MATIC49 - MATIC49A - MATIC59  
MATIC59A - M115 - M130 - M150 - M150A - M180  
M180A



LAMBER 0800081

**3055690 COMPLETE CONVEYOR SUPPORT**  
for Dishwasher pull-through (LAMBER)  
Series MATIC



LAMBER 0800123

LAMBER 0800150

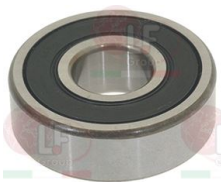
LAMBER 0802043

**3063052 BEARING 6003 NSK**  
 $\varnothing$  external 35 mm -  $\varnothing$  internal 17 mm - thickness 10



LAMBER 0802500

**1063005 BEARING 6201 DDU NSK**  
external  $\varnothing$  32mm - internal  $\varnothing$  12mm - thickness 10mm



LAMBER 0800131

**5036783 BOX FOR CONVEYOR CRANK HANDLE MATIC**  
for Dishwasher pull-through (LAMBER) LC350 - LC500  
MA-10 - MA-20 - MA-33 - MA-39 - MA-49 - MA-59  
MATIC10 - MATIC20 - MATIC33 - MATIC33A  
MATIC39 - MATIC49 - MATIC49A - MATIC59  
MATIC59A - M115 - M130 - M150 - M150A - M180  
M180A

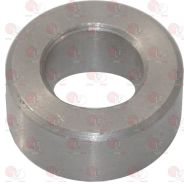


LAMBER 0406030



Suitable for:

**5043698 BUSHING STAINL. STEEL  $\varnothing$  22x12.2x10 mm**  
for Dishwasher pull-through (LAMBER) LC350 - LC500  
MA-10 - MA-20 - MA-33 - MA-39 - MA-49 - MA-59  
MATIC20 - MATIC33 - MATIC33A - MATIC39  
MATIC49 - MATIC49A - MATIC59 - MATIC59A - M115  
M150 - M150A - M180 - M180A  
for Pan/utensilwashing machines pull-through  
(LAMBER) M130  
for Dishwasher (LAMBER) MATIC10



LAMBER 0802048

**1186192 FLAT WASHER M5**  
internal/external  $\varnothing$  5.3/10 mm - thickness 1 mm  
stainless steel - UNI 6592 - DIN 125 A - ISO 7089



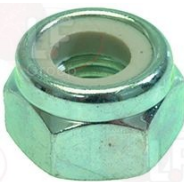
LAMBER 0800256

**3743145 FLAT WASHER M8**  
internal/external  $\varnothing$  8.4/16 mm - thickness 1.6 mm  
stainless steel - UNI 6592 - DIN 125 A - ISO 7089



LAMBER 0800028

**1348041 HEXAGONAL SELF-LOCKING NUT M8**  
stainless steel - with built in nylon ring  
UNI 7473 - DIN 982 - ISO 7040



LAMBER 0800093

LAMBER 0800657

## LAMBER



Suitable for:

**9742006 FEATHER KEY ST. STEEL C40 6x6x25 mm**  
UNI 6604/A - DIN 6685/A  
for Dishwasher pull-through (LAMBER) MATIC39  
MATIC49 - MATIC59



LAMBER 0802723

**3528010 FLAT WASHER M6**  
 $\varnothing$  internal/external 6.4/12 mm - thickness 1.6 mm  
st./steel - UNI 6592 - DIN 125 A - ISO 7089



LAMBER 0800004

**1184008 HEXAGON HEAD SCREW M8x25**  
stainless steel - UNI 5739 - DIN 933 - ISO 4017



LAMBER 0800672

**3186175 O-RING 04175 EPDM**  
ring thickness 3.53 mm - internal  $\varnothing$  44.04 mm



LAMBER 0203009



Suitable for:

**5043696 PIN  $\varnothing$  12 mm THREAED MA8**  
 for Dishwasher pull-through (LAMBER) LC350 - LC500  
 MA-10 - MA-20 - MA-33 - MA-39 - MA-49 - MA-59  
 MATIC10 - MATIC20 - MATIC33 - MATIC33A  
 MATIC39 - MATIC49 - MATIC49A - MATIC59  
 MATIC59A - M115 - M130 - M150 - M150A - M180  
 M180A



LAMBER 0802046

**3528075 SPIRAL SPRING WASHER M8**  
 internal/external  $\varnothing$  8.4/14.4 mm - thickness 4 mm  
 stainless steel - UNI 1751 - DIN 127 B



LAMBER 0800670

**5044385 MESH CHAIN**  
 for Dishwasher conveyor type (LAMBER) LINEAR30  
 LINEAR40 - LINEAR60 - LINEAR80  
 for Dishwasher pull-through (LAMBER) LC350 - LC500  
 Matic33A - MA-10 - MA-20 - MA-33 - MA-39  
 MA-49 - MA-59 - MATIC10 - MATIC20 - MATIC33  
 MATIC39 - MATIC49 - MATIC49A - MATIC59  
 MATIC59A - M150 - M150A - M180 - M180A  
 for Pan/utensilwashing machines conveyor type  
 (LAMBER) M130



LAMBER 0813444

# LAMBER



Suitable for:

**3053140 SELF-LOCKING HEXAGON NUT M5**  
 stainless steel - with nylon built-in ring  
 UNI 7473 - DIN 982 - ISO 7040  
 for Dishwasher (LAMBER) F85 - F92 - 01F - 040F  
 045F - 050F - 075F  
 for Dishwasher hood type (LAMBER) L20 - L21 - L25  
 015/24L  
 for Glasswasher/Cupwasher (LAMBER) DSP3 - MINIBAR  
 SUPERQS - S200 - S240 - S280 - S510



LAMBER 0800653

**5043853 PINION 1/2X5/16 Z=17 f.20**  
 for Dishwasher pull-through (LAMBER) MA-39 - MA-49  
 MA-59 - MATIC39 - MATIC49 - MATIC49A - MATIC59  
 MATIC59A



LAMBER 0802704



## Guides

### 5044791 SLIDEWAY POLYZENE DOORS MATIC

length 715 - width 20mm  
 for Dishwasher conveyor type (LAMBER) LINEAR30  
 LINEAR40 - LINEAR60 - LINEAR80  
 for Dishwasher pull-through (LAMBER) LC350 - LC500  
 MA-10 - MA-20 - MA-33 - MA-39 - MA-49 - MA-59  
 MATIC10 - MATIC20 - MATIC33 - MATIC33A  
 MATIC39 - MATIC49 - MATIC49A - MATIC59  
 MATIC59A - M115 - M130 - M150 - M150A - M180  
 M180A



LAMBER 0800494

## Handles

### 5034772 DOOR HANDLE 309 mm

for Dishwasher (LAMBER) DSP4  
 for Glasswasher/Cupwasher (LAMBER) DSP1 - DSP2  
 DSP3 - GS400 - GS581 - GS900



LAMBER 0500017

## Heating elements

### 3755060 COVER FOR HEATING ELEMENT / PLASTIC

for heating elements with flange  $\varnothing$  72 mm  
 $\varnothing$  61 mm - height 53.5 mm  
 distance between fastening holes 68.5 mm  
 for Dishwasher (LAMBER) 050F  
 for Dishwasher conveyor type (LAMBER)  
 Series LINEAR - LINEAR80  
 for Dishwasher hood type (LAMBER) L25 - 015/24L  
 for Dishwasher pull-through (LAMBER) MATIC10  
 MATIC20 - MATIC33 - MATIC39 - MATIC49  
 MATIC59 - M115 - M150  
 for Pan/utensilwashing machines (LAMBER) LP31  
 LP38 - LP6 - LP8 - PT1500 - PT850 - P550  
 P700



LAMBER 0301112

### 3355461 HEATING ELEMENT FINNED 1000W 220V

for drying  
 immersed depth 430 mm - width 50 mm  
 length of finned part 335 mm  
 connections  $\varnothing$  14 mm  
 nut (3528232) and washer (3528238) on request  
 for Dishwasher conveyor type (LAMBER)  
 Series LINEAR  
 for Dishwasher pull-through (LAMBER)  
 Series MATIC



LAMBER 0303100



Suitable for:

# LAMBER



**3755545 HEATING ELEMENT FOR BOILER 2400W 230V**  
 immersed length 230 mm  
 ext. ø flange 72 mm - with bulbholder sheathing  
 with O-ring ø 67 mm (3186014)  
 for Dishwasher (LAMBER) 040F  
 for Glasswasher/Cupwasher (LAMBER) GS4 - MINIBAR  
 SUPERQS - S200 - S280 - S510



LAMBER 0303001

**3755547 HEATING ELEMENT FOR BOILER 4500W 230V**  
 immersed length 250 mm  
 ext. ø flange 72 mm - with bulbholder sheathing  
 with O-ring ø 67 mm (3186014)  
 for Dishwasher (LAMBER) F85 - F92



LAMBER 0300002

**3755548 HEATING ELEMENT FOR BOILER 9000W 230V**  
 immersed length 420 mm  
 ext. ø flange 72 mm - with bulbholder sheathing  
 with O-ring ø 67 mm (3186014)  
 for Dishwasher hood type (LAMBER) L25 - 015/24L  
 for Dishwasher (LAMBER) MATIC33PRC



LAMBER 0300299

Suitable for:

**3755546 HEATING ELEMENT FOR BOILER 3000W 230V**  
 immersed length 180 mm  
 ext. ø flange 72 mm - with bulbholder sheathing  
 with O-ring ø 67 mm (3186014)  
 for Dishwasher (LAMBER) 045F - 050F  
 for Dishwasher hood type (LAMBER) L25 - 015/24L  
 for Glasswasher/Cupwasher (LAMBER) S510



LAMBER 0300011

**3755542 HEATING ELEMENT FOR BOILER 6000W 230V**  
 immersed length 310 mm  
 ext. ø flange 72 mm - with bulbholder sheathing  
 with O-ring ø 67 mm (3186014)  
 for Dishwasher (LAMBER) F85 - F92 - GS6 - 01F  
 075F  
 for Dishwasher hood type (LAMBER) L20 - L21 - L25  
 015/24L  
 for Pan/utensilwashing machines (LAMBER) P700



LAMBER 0300012

**3755047 HEATING ELEMENT FOR TANK 1000W 230V**  
 immersed length 190 mm  
 width 37 mm - connections ø 13 mm  
 for Dishwasher (LAMBER) GS6  
 for Glasswasher/Cupwasher (LAMBER) GS4 - S200



LAMBER 0303044

Suitable for:

Suitable for:

**7102816 HEATING ELEMENT FOR TANK 1000W 230V**  
 immerserd length 130 mm - width 40 mm  
 height 35 mm - connections  $\varnothing$  12 mm  
 for Dishwasher (LAMBER)  
 since 1/01/06 040FEK  
 since 1/01/08 045F - 045FEK  
 for Dishwasher conveyor type (LAMBER)  
 since 1/01/10 - Series LINEAR  
 for Dishwasher pull-through (LAMBER)  
 since 1/01/07 - Series MATIC  
 for Glasswasher/Cupwasher (LAMBER)  
 since 1/01/06 MINIBAR - SUPERQS - S200 - S240  
 S260 - S280 - S400EK - S460EK - S480EK - S510  
 since 1/01/08 S510EK  
 since 1/01/09 DSP3  
 for Dishwasher (LAMBER) MINIBAR DSP26 - MATIC10

**3755541 HEATING ELEMENT FOR TANK 2000W 230V**  
 immerserd length 175 mm  
 width 60 mm - connections  $\varnothing$  12 mm  
 for Dishwasher (LAMBER)  
 since 1/03/96 F85 - F92 - 01F - 040F - 050F  
 075F  
 for Dishwasher hood type (LAMBER)  
 since 1/09/01 L20 - L21  
 for Glasswasher/Cupwasher (LAMBER) MINIBAR  
 SUPERQS - S280 - S510  
 for Glasswasher/Cupwasher (LAMBER)  
 since 1/01/96  
 till 31/12/05 SUPER QS ADD



LAMBER 0303045

LAMBER 0300067

**3755544 HEATING ELEMENT FOR TANK 2400W 230V**  
 immersed length 250 mm  
 connection  $\varnothing$  1"1/4 (43 mm)  
 with O-ring (3186606)  
 for Dishwasher (LAMBER)  
 till 28/02/96 F85  
 since 28/02/96 F92  
 for Dishwasher hood type (LAMBER)  
 till 31/08/01 L20  
 since 31/08/01 L21

**3160198 ING NUT FOR INLET BOSS  $\varnothing$  1"1/4**



LAMBER 0303042

LAMBER 0200080

**3186606 O-RING 0144 EPDM**  
 ring thickness 3.53 mm - internal  $\varnothing$  39.69 mm



LAMBER 0200056



Suitable for:

Suitable for:

**3755543 HEATING ELEMENT FOR TANK 4500W 230V**  
 immerserd length 300 mm  
 width 100 mm - connection  $\varnothing$  1"1/4 (43 mm)  
 for Pan/utensilwashing machines (LAMBER)  
 till 30/04/01 P700

**3160198 ING NUT FOR INLET BOSS  $\varnothing$  1"1/4**



LAMBER 0300022

LAMBER 0200080

**3186606 O-RING 0144 EPDM**  
 ring thickness 3.53 mm - internal  $\varnothing$  39.69 mm



LAMBER 0200056

**7101851 HEATING ELEMENT TANK 2000W 230V**  
 immersed length 195 mm -  $\varnothing$  1/4" fittings  
 for Dishwasher hood type (LAMBER) L24EK - L25EK  
 015/24L  
 for Dishwasher pull-through (LAMBER) M115  
 for Dishwasher (LAMBER) DSP4 - L305 - MATIC10  
 M150A  
 for Dishwasher conveyor type (LAMBER) GS25  
 LINEAR30 - LINEAR80  
 for Dishwasher hood type (LAMBER) LINEAR40  
 LINEAR60  
 for Dishwasher pull-through (LAMBER) MA-10 - MA-20  
 MA-33 - MA-39 - MA-49 - MA-59 - MATIC20  
 MATIC33 - MATIC33A - MATIC39 - MATIC49  
 MATIC49A - MATIC59 - MATIC59A - M180 - M180A  
 for Glasswasher/Cupwasher (LAMBER) LC-350 - LC-500

**3355201 HEATING ELEMENT 1500W 220V**  
 immersed length 150 mm  
 connection  $\varnothing$  1" (33 mm)  
 complete with gasket  $\varnothing$  45 mm (3186009)



LAMBER 0303047

LAMBER



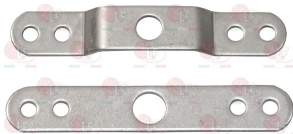
**7103070 HEATING ELEMENT 3000W 230V**  
 immersed length 270 mm  
 width 39 mm - fittings  $\varnothing$  1/4"  
 for Dishwasher pull-through (LAMBER) M115  
 for Dishwasher (LAMBER) L24 - L25 - L305 - MATIC10  
 M150A - 015/24L  
 for Dishwasher conveyor type (LAMBER) A410  
 LINEAR30 - LINEAR80  
 for Dishwasher hood type (LAMBER) LINEAR40  
 LINEAR60  
 for Dishwasher pull-through (LAMBER) M115 MA-10  
 MA-20 - MA-33 - MA-39 - MA-49 - MA-59  
 MATIC20 - MATIC33 - MATIC33A - MATIC39  
 MATIC49 - MATIC49A - MATIC59 - MATIC59A - M115  
 M180 - M180A  
 for Pan/utensilwashing machines (LAMBER) LC-350



LAMBER 0303050

## Hinges, catches and accessories

**5041810 BRACKET DOOR TIE ROD**  
 for Dishwasher (LAMBER) F85 - 01F - 075F  
 for Pan/utensilwashing machines (LAMBER) P700



LAMBER 0400190

**3095009 CABLE GUIDE CROSS PIECE FOR DOOR**  
 for Dishwasher pull-through (LAMBER) MATIC10  
 MATIC20 - MATIC33



LAMBER 0406063

**3346198 BEARING**  
 external  $\varnothing$  27 mm - internal  $\varnothing$  8 mm - thickn. 9 mm  
 for Dishwasher pull-through (LAMBER)  
 Series MATIC



LAMBER 0800490



Suitable for:

**3063033 BEARING WITH COUNTER-SEAL RING**  
external  $\varnothing$  23mm - internal  $\varnothing$  8mm - thickness 9.5mm  
for Dishwasher hood type (LAMBER) L20 - L21 - L25  
015/24L  
for Dishwasher pull-through (LAMBER)  
Series MATIC



LAMBER 0800048

**3528087 COUNTERSUNK FLAT HEAD SCREWS M6x50**  
cross recessed - stainless steel  
UNI 7688 - DIN 965 - ISO 7046  
for Dishwasher pull-through (LAMBER)  
Series MATIC



LAMBER 0800674

**3050144 FAIRLEAD WITH BRACKET**  
for Dishwasher pull-through (LAMBER)  
Series MATIC



LAMBER 0406103

**1184008 HEXAGON HEAD SCREW M8x25**  
stainless steel - UNI 5739 - DIN 933 - ISO 4017



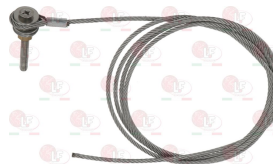
LAMBER 0800672

## LAMBER



Suitable for:

**3189049 CABLE FOR COUNTERBALANCED DOOR**  
for Dishwasher pull-through (LAMBER) MATIC10  
MATIC20 - MATIC33



LAMBER 0800480

**3391047 DOOR COUNTERWEIGHT STOPPING BRACKET**  
for Dishwasher conveyor type (LAMBER) LINEAR30  
LINEAR40 - LINEAR60 - LINEAR80  
for Dishwasher pull-through (LAMBER) MATIC10  
MATIC20 - MATIC33 - MATIC39 - MATIC49  
MATIC59 - M115 - M150  
for Pan/utensilwashing machines (LAMBER) PT1500  
PT850



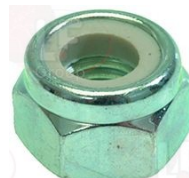
LAMBER 0406101

**3528088 HEXAGON HEAD SCREW M8x20**  
stainless steel - UNI 5739 - DIN 933 - ISO 4017  
for Dishwasher pull-through (LAMBER)  
Series MATIC



LAMBER 0800676

**1348041 HEXAGONAL SELF-LOCKING NUT M8**  
stainless steel - with built in nylon ring  
UNI 7473 - DIN 982 - ISO 7040



LAMBER 0800093

LAMBER 0800657



Suitable for:

**3528230 NUT HEXAGONAL HIGH M6**  
stainless steel - UNI 5587 - ISO 4033



LAMBER 0800656

**3528085 STAINLESS STEEL SCREW**  
for Dishwasher pull-through (LAMBER)  
Series MATIC



LAMBER 0800619

**3053321 DOOR ROD BUSHING**  
for Dishwasher (LAMBER) F85 - F92 - 01F - 040F  
045F - 050F - 075F  
for Glasswasher/Cupwasher (LAMBER) SUPERQS - S200  
S280 - S510



LAMBER 0800169

**3528048 LARGE PAN HEAD SCREW M6x10**  
stainless steel - slotted  
for Dishwasher (LAMBER) F85 - F92 - 01F - 040F  
045F - 050F - 075F  
for Glasswasher/Cupwasher (LAMBER) MINIBAR  
SUPERQS - S200 - S280 - S510



LAMBER 0800163

## LAMBER



Suitable for:

**5037447 SPIRAL SPRING WASHER M6**  
internal/external  $\varnothing$  6.4/11.4 mm - thickness 3.2 mm  
stainless steel - UNI 1751 - DIN 127 B  
for POTATO PEELER PPJ10 CE



LAMBER 0800066

**3528235 WASHER FLAT WIDE M6**  
internal/external  $\varnothing$  6.4/18 mm - thickness 1.6 mm  
stainless steel - UNI 6593 - DIN 9021 - ISO 7093



LAMBER 0800064

**3053298 HINGE SHAFT**  
for Dishwasher (LAMBER) F85 - F92 - 01F - 040F  
045F - 050F - 075F  
for Glasswasher/Cupwasher (LAMBER) MINIBAR  
SUPERQS - S200 - S280 - S510



LAMBER 0800099

**1528030 MID HEXAGONAL NUT M6**  
stainless steel - UNI 5588 - DIN 934 - ISO 4032



LAMBER 0800063



Suitable for:

**5037447 SPIRAL SPRING WASHER M6**

internal/external  $\varnothing$  6.4/11.4 mm - thickness 3.2 mm  
stainless steel - UNI 1751 - DIN 127 B  
for POTATO PEELER PPJ10 CE



LAMBER 0800066

# LAMBER



Suitable for:

**3053273 DOOR TIE ROD  $\varnothing$  5X180 mm**

for Dishwasher (LAMBER) F82 - F85 - 01F - 040F  
045F - 050F - 075F  
for Glasswasher/Cupwasher (LAMBER) DSP3 - GS4  
MINIBAR - SUPERQS - S200 - S240 - S280 - S510  
for Pan/utensilwashing machines (LAMBER) P700



LAMBER 0800408

**3053266 DOOR TIE ROD UNIT 60 mm**

for Dishwasher (LAMBER) F85 - F92 - 01F - 040F  
045F - 050F - 075F  
for Glasswasher/Cupwasher (LAMBER) DSP3 - MINIBAR  
SUPERQS - S200 - S240 - S280 - S510



LAMBER 0800403

**3053274 DOOR TIE ROD PIN**

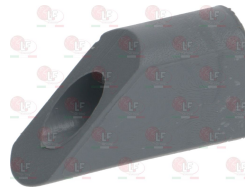
for Dishwasher (LAMBER) F85 - F92 - 01F - 040F  
045F - 050F - 075F  
for Glasswasher/Cupwasher (LAMBER) DSP3 - MINIBAR  
SUPERQS - S200 - S240 - S280 - S510



LAMBER 0800401

**3053267 DOOR RETAINER**

for Dishwasher (LAMBER) F85 - F92 - 01F - 040F  
045F - 050F - 075F  
for Dishwasher hood type (LAMBER) L20 - L21 - L25  
015/24L  
for Glasswasher/Cupwasher (LAMBER) DSP3 - MINIBAR  
SUPERQS - S200 - S240 - S280 - S510



LAMBER 0800402

**3053464 DOOR TIE ROD BRACKET**

for Dishwasher (LAMBER) F85 - F92 - 01F - 040F  
045F - 050F - 075F  
for Glasswasher/Cupwasher (LAMBER) DSP3 - MINIBAR  
SUPERQS - S200 - S240 - S280 - S510



LAMBER 0406010

**1186192 FLAT WASHER M5**

internal/external  $\varnothing$  5.3/10 mm - thickness 1 mm  
stainless steel - UNI 6592 - DIN 125 A - ISO 7089



LAMBER 0800256



Suitable for:

**3053462 LARGE PAN HEAD SCREW M4x10**  
stainless steel - slotted  
for Dishwasher (LAMBER) F85 - F92 - 01F - 040F  
045F - 050F - 075F  
for Glasswasher/Cupwasher (LAMBER) DSP3 - MINIBAR  
SUPERQS - S200 - S240 - S280 - S510



LAMBER 0800646

**3053140 SELF-LOCKING HEXAGON NUT M5**  
stainless steel - with nylon built-in ring  
UNI 7473 - DIN 982 - ISO 7040  
for Dishwasher (LAMBER) F85 - F92 - 01F - 040F  
045F - 050F - 075F  
for Dishwasher hood type (LAMBER) L20 - L21 - L25  
015/24L  
for Glasswasher/Cupwasher (LAMBER) DSP3 - MINIBAR  
SUPERQS - S200 - S240 - S280 - S510



LAMBER 0800653

**3053322 HINGE PLASTIC FOR CONTROL PANEL**  
for Dishwasher conveyor type (LAMBER) LINEAR30  
LINEAR40PRC - LINEAR60PRC - LINEAR80PRC



LAMBER 0800174

**3053478 LH HINGE**  
for Dishwasher (LAMBER)  
since 1/02/03 F85 - F92 - 01F - 040F - 045F  
050F - 075F



LAMBER 0200669

## LAMBER



Suitable for:

**3528138 SELF-LOCKING HEXAGON NUT M4**  
stainless steel - with nylon built-in ring  
UNI 7474 - DIN 985 - ISO 10511



LAMBER 0800654

**3528112 HEXAGONAL HEAD SCREW M6x16**  
st./steel - UNI 5739 - DIN 933 - ISO 4017



LAMBER 0800065



Suitable for:

**3528048 LARGE PAN HEAD SCREW M6x10**  
stainless steel - slotted  
for Dishwasher (LAMBER) F85 - F92 - 01F - 040F  
045F - 050F - 075F  
for Glasswasher/Cupwasher (LAMBER) MINIBAR  
SUPERQS - S200 - S280 - S510



LAMBER 0800163

**1186352 O-RING 02050 EPDM**  
ring thickness 1.78 mm - internal  $\varnothing$  12.42 mm  
for Dishwasher (LAMBER) SUPER QS



LAMBER 0200103

**3250201 SPRING FOR DOOR  $\varnothing$  6x168 mm**  
for Glasswasher/Cupwasher (LAMBER) GS4 - GS5  
MINIBAR - S200 - S240 - S260 - S280 - S400EK



LAMBER 0800716

**3528235 WASHER FLAT WIDE M6**  
internal/external  $\varnothing$  6.4/18 mm - thickness 1.6 mm  
stainless steel - UNI 6593 - DIN 9021 - ISO 7093



LAMBER 0800064

**3053477 RH HINGE**  
for Dishwasher (LAMBER)  
since 1/02/03 F85 - F92 - 01F - 040F - 045F  
050F - 075F



LAMBER 0200668

# LAMBER



Suitable for:

**1528030 MID HEXAGONAL NUT M6**  
stainless steel - UNI 5588 - DIN 934 - ISO 4032



LAMBER 0800063

**5037447 SPIRAL SPRING WASHER M6**  
internal/external  $\varnothing$  6.4/11.4 mm - thickness 3.2 mm  
stainless steel - UNI 1751 - DIN 127 B  
for POTATO PEELER PPJ10 CE



LAMBER 0800066

**3250235 SPRING FOR DOOR  $\varnothing$  8x168 mm**  
for Dishwasher (LAMBER) F840 - F85 - F92 - F92EK  
01F - 050F - 075F



LAMBER 0800714

**3528112 HEXAGONAL HEAD SCREW M6x16**  
st./steel - UNI 5739 - DIN 933 - ISO 4017



LAMBER 0800065



Suitable for:

**3528048 LARGE PAN HEAD SCREW M6x10**  
stainless steel - slotted  
for Dishwasher (LAMBER) F85 - F92 - 01F - 040F  
045F - 050F - 075F  
for Glasswasher/Cupwasher (LAMBER) MINIBAR  
SUPERQS - S200 - S280 - S510



LAMBER 0800163

**1186352 O-RING 02050 EPDM**  
ring thickness 1.78 mm - internal  $\varnothing$  12.42 mm  
for Dishwasher (LAMBER) SUPER QS



LAMBER 0200103

**3250201 SPRING FOR DOOR  $\varnothing$  6x168 mm**  
for Glasswasher/Cupwasher (LAMBER) GS4 - GS5  
MINIBAR - S200 - S240 - S260 - S280 - S400EK



LAMBER 0800716

**3528235 WASHER FLAT WIDE M6**  
internal/external  $\varnothing$  6.4/18 mm - thickness 1.6 mm  
stainless steel - UNI 6593 - DIN 9021 - ISO 7093



LAMBER 0800064

## LAMBER

Suitable for:

**1528030 MID HEXAGONAL NUT M6**  
stainless steel - UNI 5588 - DIN 934 - ISO 4032



LAMBER 0800063

**5037447 SPIRAL SPRING WASHER M6**  
internal/external  $\varnothing$  6.4/11.4 mm - thickness 3.2 mm  
stainless steel - UNI 1751 - DIN 127 B  
for POTATO PEELER PPJ10 CE



LAMBER 0800066

**3250235 SPRING FOR DOOR  $\varnothing$  8x168 mm**  
for Dishwasher (LAMBER) F840 - F85 - F92 - F92EK  
01F - 050F - 075F



LAMBER 0800714





Suitable for:

**3053265 TIE ROD  $\varnothing$  5x305 mm**  
 for Dishwasher (LAMBER) F85 - F92 - 01F - 040F  
 045F - 050F - 075F  
 for Dishwasher hood type (LAMBER) L20 - L21 - L25  
 015/24L  
 for Glasswasher/Cupwasher (LAMBER) DSP3 - S280  
 S510  
 since 1/10/02 MINIBAR  
 for Pan/utensilwashing machines (LAMBER) P700



LAMBER 0800400

**3053266 DOOR TIE ROD UNIT 60 mm**  
 for Dishwasher (LAMBER) F85 - F92 - 01F - 040F  
 045F - 050F - 075F  
 for Glasswasher/Cupwasher (LAMBER) DSP3 - MINIBAR  
 SUPERQS - S200 - S240 - S280 - S510



LAMBER 0800403

**3053274 DOOR TIE ROD PIN**  
 for Dishwasher (LAMBER) F85 - F92 - 01F - 040F  
 045F - 050F - 075F  
 for Glasswasher/Cupwasher (LAMBER) DSP3 - MINIBAR  
 SUPERQS - S200 - S240 - S280 - S510



LAMBER 0800401

**3053462 LARGE PAN HEAD SCREW M4x10**  
 stainless steel - slotted  
 for Dishwasher (LAMBER) F85 - F92 - 01F - 040F  
 045F - 050F - 075F  
 for Glasswasher/Cupwasher (LAMBER) DSP3 - MINIBAR  
 SUPERQS - S200 - S240 - S280 - S510



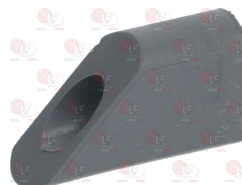
LAMBER 0800646

# LAMBER



Suitable for:

**3053267 DOOR RETAINER**  
 for Dishwasher (LAMBER) F85 - F92 - 01F - 040F  
 045F - 050F - 075F  
 for Dishwasher hood type (LAMBER) L20 - L21 - L25  
 015/24L  
 for Glasswasher/Cupwasher (LAMBER) DSP3 - MINIBAR  
 SUPERQS - S200 - S240 - S280 - S510



LAMBER 0800402

**3053464 DOOR TIE ROD BRACKET**  
 for Dishwasher (LAMBER) F85 - F92 - 01F - 040F  
 045F - 050F - 075F  
 for Glasswasher/Cupwasher (LAMBER) DSP3 - MINIBAR  
 SUPERQS - S200 - S240 - S280 - S510



LAMBER 0406010

**1186192 FLAT WASHER M5**  
 internal/external  $\varnothing$  5.3/10 mm - thickness 1 mm  
 stainless steel - UNI 6592 - DIN 125 A - ISO 7089



LAMBER 0800256

**3528138 SELF-LOCKING HEXAGON NUT M4**  
 stainless steel - with nylon built-in ring  
 UNI 7474 - DIN 985 - ISO 10511



LAMBER 0800654





Suitable for:

**3053140 SELF-LOCKING HEXAGON NUT M5**  
 stainless steel - with nylon built-in ring  
 UNI 7473 - DIN 982 - ISO 7040  
 for Dishwasher (LAMBER) F85 - F92 - 01F - 040F  
 045F - 050F - 075F  
 for Dishwasher hood type (LAMBER) L20 - L21 - L25  
 015/24L  
 for Glasswasher/Cupwasher (LAMBER) DSP3 - MINIBAR  
 SUPERQS - S200 - S240 - S280 - S510



LAMBER 0800653

# LAMBER



Suitable for:

## Hose-end fittings

**3315019 3-WAYS HOSE END FITTING  $\varnothing$  12 mm**



LAMBER 0200207

## Hydraulic piping

**3450736 PRESSURE SWITCH PIPE  $\varnothing$  4x8.5 mm - 10 m**  
 made of black rubber  
 external  $\varnothing$  8.5 mm  
 internal  $\varnothing$  4 mm



LAMBER 0200515

**3450336 PRESSURE SWITCH PIPE  $\varnothing$  4x8.5 mm - 100 m**  
 made of black rubber  
 external  $\varnothing$  8.5 mm  
 internal  $\varnothing$  4 mm



LAMBER 0200515

**5041979 PRESSURE SWITCH TUBE 2000 mm**  
 $\varnothing$  external 15  $\varnothing$  internal 11 mm  
 $\varnothing$  external 10 internal 5 mm  
 for Dishwasher (LAMBER) LINEAR - L24 - L25  
 015/24L - 040F



LAMBER 0200200

**3450151 REINFORCED RUBBER HOSE  $\varnothing$  38x46 mm**  
 internal  $\varnothing$  38 mm - external  $\varnothing$  46 mm  
 temperature -40+100°C  
 sold per meter



LAMBER 0200522



Suitable for:

# LAMBER



**3450209 RUBBER PIPE  $\varnothing$  13x20 mm - 40 m**  
operating temperature -40+100°C



LAMBER 0200498

Suitable for:

**3450118 RUBBER PIPE 8x15 mm INDUSTRIA 10**  
sold per meter



LAMBER 0200293

## Indicator lights

**7102193 INDICATOR LIGHT GREEN SIEMENS**



LAMBER 0301904

**3221110 INDICATOR LIGHT GREEN 230V**  
 $\varnothing$  head 7 mm -  $\varnothing$  hole 6 mm - 120°C  
wire connection length 210 mm



LAMBER 0300284

LAMBER 0301910

**5044147 INDICATOR LIGHT GREEN 230V**  
head  $\varnothing$  7 mm - hole  $\varnothing$  6 mm - cable length 500 mm  
with connector  
for Dishwasher (LAMBER) 050 F85 - L21 - L24 - L25  
M150A - 01F - 015/24L - 045F - 050F - 075F  
for Dishwasher pull-through (LAMBER) M115  
for Glasswasher/Cupwasher (LAMBER) SUPERQS - S200  
S240 - S260 - S280 - S510  
for Pan/utensilwashing machines (LAMBER) M150



LAMBER 0301911

**5043095 INDICATOR LIGHT GREEN 24V**  
head  $\varnothing$  20 mm - hole  $\varnothing$  10 mm - 120°C  
wire connection length 200 mm  
for Dishwasher pull-through (LAMBER) M115 - M150  
M150A  
for Pan/utensilwashing machines (LAMBER) LP31  
LP38 - LP6 - LP8 - PT1500 - PT850



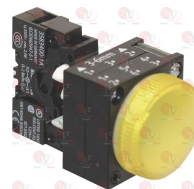
LAMBER 0301901

**7102194 INDICATOR LIGHT WHITE SIEMENS**  
for Dishwasher conveyor type (LAMBER) LINEAR30  
LINEAR40 - LINEAR60 - LINEAR80  
for Dishwasher pull-through (LAMBER) MATIC10  
MATIC20 - MATIC33 - MATIC33A - MATIC39  
MATIC49 - MATIC49A - MATIC59 - M115 - M130  
M150 - M150A - M180 - M180A



LAMBER 0301908

**7102195 INDICATOR LIGHT YELLOW SIEMENS**  
for Dishwasher conveyor type (LAMBER) LINEAR30  
LINEAR40 - LINEAR60 - LINEAR80  
for Dishwasher pull-through (LAMBER) MATIC10  
MATIC20 - MATIC33 - MATIC33A - MATIC39  
MATIC49 - MATIC49A - MATIC59 - MATIC59A - M115  
M130 - M150 - M150A - M180 - M180A



LAMBER 0301903



## Inlet hoses

- 3449034 FLEX HOSE  $\varnothing$  3/4" Fp x CFp 1500 mm**  
 EPDM hose covered in stainless steel  
 hose external  $\varnothing$  17 mm - internal  $\varnothing$  12 mm  
 max temperature 90°C  
 max pressure 20 bar  
 WRAS approved



LAMBER 090007

## Interference suppression filters

- 3160099 INTERFERENCE SUPPRES. FILTER F3CF71112F**  
 0.47 $\mu$ F



LAMBER 0300900

## Ironmongery (screws,nuts,washers)

- 5046995 COUNTERSUNK FLAT HEAD SCREWS M6x25**  
 cross recessed - stainless steel  
 UNI 7688 - DIN 965 - ISO 7046



LAMBER 0800172

- 5015055 FLAT WASHER M12**  
 $\varnothing$  internal/external 13/24 mm - thickness 2,5 mm  
 st./steel - UNI 6592 - DIN 125 A - ISO 7089  
 for Dishwasher (LAMBER) L24 - L25 - L305 - MATIC10  
 M150A - 015/24L  
 for Dishwasher conveyor type (LAMBER) A410  
 LINEAR30 - LINEAR80  
 for Dishwasher hood type (LAMBER) LINEAR40  
 LINEAR60  
 for Dishwasher pull-through (LAMBER) Matic49A  
 MA-10 - MA-20 - MA-33 - MA-39 - MA-49 - MA-59  
 MATIC20 - MATIC33 - MATIC33A - MATIC39  
 MATIC49 - MATIC59 - MATIC59A - M115 - M180  
 M180A  
 for Pan/utensilwashing machines (LAMBER) LC-350  
 LC-500 - M150



LAMBER 0800076



Suitable for:

# LAMBER



**5022074 HEXAGON HEAD SCREW M8x40**  
stainless steel - UNI 5739 - DIN 933 - ISO 4017



LAMBER 0800016

Suitable for:

**3528137 HEXAGONAL NUT HIGH M8**  
stainless steel - UNI 5587 - ISO 4033



LAMBER 0800120

**3528228 NUT HEXAGONAL SELF BLOCKING M10**  
stainless steel - con anello in nylon incorporato  
UNI 7474 - DIN 985 - ISO 10511



LAMBER 0800144

**5035625 SCREW WITH HEXAGON HEAD M8x35**  
stainless steel - UNI 5739 - DIN 933 - ISO 4017



LAMBER 0800626

**3528058 SELF-TAPPING SCREW  $\varnothing$  3.9x16 mm**  
stainless steel - cylinder head  
cross recessed - C type end  
UNI 6954 - DIN 7981 - ISO 7049  
for Glasswasher/Cupwasher (LAMBER) MINIBAR



LAMBER 0800001

**7104170 WASHER PTFE  $\varnothing$  50x18x2 mm**  
for Dishwasher (LAMBER) L21 - L25 - 015/24L  
for Dishwasher hood type (LAMBER) DSP5 - L20



LAMBER 0800685

## Labels for control panels

**5043897 MEMBRANE FOR CONTROL PANEL**  
for Dishwasher (LAMBER) F92EK - 01FEK - 040FEK  
045FEK - 075FEK  
for Glasswasher/Cupwasher (LAMBER) GS4EK - GS45EK  
GS5EK - S400EK - S460EK - S480EK - S510EK



LAMBER 0502000

**5049970 SILK SCREENED CONTROL PANEL**  
for Dishwasher (LAMBER) F840 - L21 - L24 - L25  
L305 - 015/24L  
for Pan/utensilwashing machines (LAMBER) GS25  
LP31 - LP38 - LP6 - LP8 - PT1500 - PT800  
PT850 - P550 - P700



LAMBER 0502001



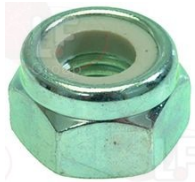
## Levers

- 5053533 LEVER STAIN.STEEL ECONOMIZER MATIC**  
for Dishwasher pull-through (LAMBER) LC350 - LC500  
MA-10 - MA-20 - MA-33 - MA-39 - MA-49 - MA-59  
MATIC10 - MATIC20 - MATIC33 - MATIC33A  
MATIC39 - MATIC49 - MATIC49A - MATIC59  
MATIC59A - M115 - M150 - M150A - M180 - M180A  
for Pan/utensilwashing machines pull-through  
(LAMBER) M130



LAMBER 0704003

- 1348041 HEXAGONAL SELF-LOCKING NUT M8**  
stainless steel - with built in nylon ring  
UNI 7473 - DIN 982 - ISO 7040



LAMBER 0800093

LAMBER 0800657

- 3240424 MAGNETIC MICROSWITCH E531TC**  
8A 24V - contact NO - head 65x20x9 mm  
with cable length 340 mm  
for Dishwasher conveyor type (LAMBER) LINEAR30  
for Dishwasher pull-through (LAMBER) LINEAR40PRC  
LINEAR60PRC - LINEAR80PRC



LAMBER 0300082

- 3060047 HEXAGONAL NUT M10 SHORT**  
stainless steel - UNI 5589 - DIN 936 - 4035



LAMBER 0800082

- 5037693 MAGNET HOLDER ø 17x75 mm**  
for Dishwasher pull-through (LAMBER) LC350 - LC500  
MA-39 - MA-49 - MA-59 - MATIC10 - MATIC20  
MATIC33 - MATIC33A - MATIC39 - MATIC49  
MATIC49A - MATIC59 - MATIC59A - M115 - M130  
M150 - M150A - M180 - M180A



LAMBER 0200623

- 3240184 MICROSWITCH MAGNET ø 8x39 mm**  
for Dishwasher pull-through (LAMBER) LC350 - LC500  
MA-39 - MA-49 - MA-59 - MATIC10 - MATIC20  
MATIC33 - MATIC39 - MATIC49 - MATIC59 - M115  
M130 - M150 - M180



LAMBER 0800139

## Microswitches, magnetic

- 3240216 MAGNETIC MICROSWITCH E5221V**  
0.04A 250V - contact NO - head 40x13x8 mm  
with cable length 1900 mm  
for Glasswasher/Cupwasher (LAMBER) MINIBAR



LAMBER 0300138

- 3240610 RECTANGULAR MAGNETIC UNIT M303**  
40x13x8 mm - alnico-magnet ø 6x30 mm



LAMBER 0800141

LAMBER 0800142



Suitable for:

# LAMBER



Suitable for:

## Non-return and expansion valves

**1526503 NON-RETURN VALVE  $\varnothing$  40 mm**  
 ballcock - outlets  $\varnothing$  12 mm  
 stainless steel cap  
 for Dishwasher (LAMBER) 01F - 040F - 045F - 050F  
 075F  
 for Glasswasher/Cupwasher (LAMBER) MINIBAR  
 SUPERQS - S200 - S240 - S280 - S510



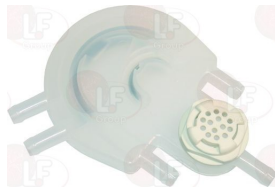
LAMBER 0500605

**5034183 SAFETY DEVICE DVGW COMPLETE**  
 thread M28 - hose-end fitting  $\varnothing$  12 mm  
 with flat gasket and fastening nut



LAMBER 0500602

**7105351 VALVE AIR-BREAK**  
 for Dishwasher (LAMBER) F85 - F92 - F94EK - 01FEK  
 040FEK - 045F - 050F - 075F  
 for Dishwasher hood type (LAMBER) L21 - L21EK  
 for Glasswasher/Cupwasher (LAMBER) DSP26 - DSP3  
 SUPERQS - S260 - S280 - S400EK - S460EK  
 S480EK - S510



LAMBER 0500606

**7102873 NON-RETURN VALVE**  
 for Dishwasher (LAMBER) DSP26 - F85 - F92EK  
 F94EK - GS6EK - 01FEK - 040F - 040FEK - 045F  
 045FEK - 050F - 075F  
 for Dishwasher hood type (LAMBER) A410EK - L21  
 L21EK - 015/24L  
 for Glasswasher/Cupwasher (LAMBER) DSP3 - SUPERQS  
 S260 - S280 - S400EK - S460EK - S480EK - S510  
 S510EK



LAMBER 0200426

## O-Ring and ORM gaskets

**1186358 O-RING 03030 EPDM**  
 ring thickness 2.62 mm - internal  $\varnothing$  7.59 mm



LAMBER 0200211

**3186137 O-RING 04387 EPDM**  
 ring thickness 3.53 mm - internal  $\varnothing$  98.02 mm  
 for Dishwasher pull-through (LAMBER) MATIC10  
 MATIC20 - MATIC33 - MATIC39 - MATIC49  
 MATIC59 - M115 - M150



LAMBER 0203004



## Outlet solenoid valves and accessories

- 5044752 SOLENOID VALVE WATER OUTLET MDB-C-2M**  
 NC - 230V 50/60Hz 18AMP  
 with motor cover and hand lever  
 inlet  $\varnothing$  50 mm - outlet  $\varnothing$  50 mm  
 overflow hose  $\varnothing$  35 mm  
 for Dishwasher conveyor type (LAMBER) LINEAR30  
 LINEAR40 - LINEAR60 - LINEAR80 - V1200 - V600  
 for Dishwasher pull-through (LAMBER) MA-10 - MA-20  
 MA-33 - MA-39 - MA-49 - MA-59 - MATIC10  
 MATIC20 - MATIC33 - MATIC33A - MATIC39  
 MATIC49 - MATIC49A - MATIC59 - MATIC59A - M115  
 M150A - M180 - M180A  
 for Pan/utensilwashing machines pull-through  
 (LAMBER) LC350 - LC500 - M130 - M150



LAMBER 0301157

## Pegs

- 3055632 FEEDING FINGER**  
 for Dishwasher conveyor type (LAMBER)  
 Series LINEAR



LAMBER 0500019

- 3055633 FEEDING FINGER**  
 for Dishwasher conveyor type (LAMBER)  
 Series LINEAR



LAMBER 0500351

- 3055639 FEEDING FINGER**  
 for Dishwasher pull-through (LAMBER)  
 Series MATIC



LAMBER 0800165

## Pins

- 7105145 PIN FOR LOWER ROLLER**  
 for Dishwasher conveyor type (LAMBER) V1200 - V600



LAMBER 0802114

- 7105144 BEARING 698 ZZ NSK**  
 external  $\varnothing$  19 mm - internal  $\varnothing$  8 mm, thickness 6 mm  
 for Pan/utensilwashing machines (LAMBER) V600  
 for Pan/utensilwashing machines (LAMBER) AS/180°  
 PT1500 - PT800



LAMBER 0802502



Suitable for:

**7105146 BUSHING PIN LOWER BEARING**  
for Dishwasher conveyor type (LAMBER) V1200 - V600



LAMBER 0802116

**7105142 ROLLER FOR LOWER SLIDEWAY**  
for Dishwasher conveyor type (LAMBER) V1200 - V600



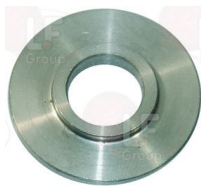
LAMBER 0802109

**7109981 PIN FOR UPPER ROLLER**  
for Dishwasher conveyor type (LAMBER) V1200 - V600



LAMBER 0802113

**7109979 BUSHING PIN UPPER BEARING**



LAMBER 0802115

**3743244 RINSE ARM ROD**  
for Pan/utensilwashing machines (LAMBER) P700



LAMBER 0201001

# LAMBER



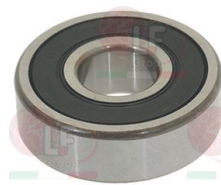
Suitable for:

**7105147 CIRCLIP E-15**  
stainless steel - internal  $\varnothing$ 13.8mm - thickness 1mm  
UNI 7435 - DIN 471  
for Dishwasher conveyor type (LAMBER) MATIC30  
MATIC40 - MATIC60 - MATIC80 - V1200 - V600



LAMBER 0802400

**1063005 BEARING 6201 DDU NSK**  
external  $\varnothing$  32mm - internal  $\varnothing$  12mm - thickness 10mm



LAMBER 0800131

**7109978 ROLLER FOR SLIDEWAY POLYCORD UPPER**  
for Dishwasher conveyor type (LAMBER) V1200 - V600



LAMBER 0802107





## Position switches

- 3803006 LIMIT MICROSWITCH SIEMENS**  
 mod. 3SE5112-0CA00 with lever 3SE5000-0AA01  
 1 NO contact - 1 NC contact  
 for Dishwasher conveyor type (LAMBER) LINEAR30  
 for Dishwasher pull-through (LAMBER) LINEAR40PRC  
 LINEAR60PRC - LINEAR80PRC



LAMBER 0300232

## Pressure gauges

- 5044402 PRESSURE GAUGE ø 51 mm 0÷4 bar**  
 back connection 1/4"  
 for Dishwasher conveyor type (LAMBER) LINEAR30  
 LINEAR40 - LINEAR60 - LINEAR80 - M115 - V1200  
 V600  
 for Dishwasher pull-through (LAMBER) LC350 - LC500  
 MA-10 - MA-20 - MA-33 - MA-39 - MA-49 - MA-59  
 MATIC10 - MATIC20 - MATIC33 - MATIC33A  
 MATIC39 - MATIC49 - MATIC49A - MATIC59  
 MATIC59A - M130 - M150 - M150A - M180 - M180A



LAMBER 0301152

## Pressure reducers

- 5032217 PRESSURE ADJUSTER 1/2"**  
 distance between hole 66 mm  
 for Dishwasher conveyor type (LAMBER) LINEAR30  
 LINEAR40 - LINEAR60 - LINEAR80  
 for Dishwasher pull-through (LAMBER) Matic20  
 MA-10 - MA-20 - MA-33 - MA-39 - MA-49 - MA-59  
 MATIC10 - MATIC33 - MATIC33A - MATIC39  
 MATIC49 - MATIC49A - MATIC59 - MATIC59A - M115  
 M150A - M180 - M180A  
 for Pan/utensilwashing machines pull-through  
 (LAMBER) LC350 - LC500 - M130 - M150



LAMBER 0301151



Suitable for:

# LAMBER



Suitable for:

## Pressure switches

**3320027 PRESSURE SWITCH 1 LEVEL**  
calibration 50/30 mm  
250V 16A  
max operating temperature 85°C



LAMBER 0301500

**3320063 PRESSURE SWITCH 1 LEVEL**  
calibration 110/70 mm  
250V 16A  
max operating temperature 85°C



LAMBER 0301501

**3320076 PRESSURE SWITCH 1 LEVEL**  
calibration 60/30 mm  
250V 16A  
max operating temperature 85°C



LAMBER 0300026

LAMBER 0301502

**5043238 PRESSURE SWITCH 1 LEVEL**  
calibration 100/40 mm



LAMBER 0301503

**7151266 PRESSURE SWITCH 1 LEVEL**  
setting 110/90 mm  
250V 16A



LAMBER 0301506

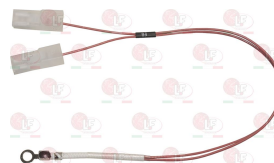
## Probes

**5045985 TEMPERATURE PROBE**  
for Dishwasher conveyor type (LAMBER) LINEAR30  
LINEAR40 - LINEAR60 - LINEAR80 - V1200 - V600  
for Dishwasher pull-through (LAMBER) LC350 - LC500  
MA-10 - MA-20 - MA-33 - MA-39 - MA-49 - MA-59  
MATIC10 - MATIC20 - MATIC33 - MATIC33A  
MATIC39 - MATIC49 - MATIC49A - MATIC59  
MATIC59A - M150 - M150A - M180 - M180A  
for Pan/utensilwashing machines pull-through  
(LAMBER) M130



LAMBER 0305101

**5038195 TEMPERATURE PROBE 250 mm**  
for Dishwasher (LAMBER) F840CV - F85 - F92EK  
GS25EK - GS6EK - L305CV - 01FEK - 040FEK  
045FEK - 075FEK  
for Dishwasher hood type (LAMBER) A410 - L21  
L21EK - L24EK - L25EK - 015/24L  
for Dishwasher pull-through (LAMBER) M150  
for Glasswasher/Cupwasher (LAMBER) GS4EK - GS45EK  
GS5EK - S400EK - S460EK - S480EK - S510EK  
for Pan/utensilwashing machines (LAMBER) LP31EK  
LP38EK - LP6EK - LP8EK - PT1500EK - PT800EK  
PT850EK - P440EK - P550EK - P700EK



LAMBER 0500404



## Relays

**3351021 POWER RELAY FINDER 62.82.8.230.0000**  
 230V 50/60Hz  
 2 exchange contacts 16A  
 for Dishwasher (LAMBER) 01F - 040F - 045F - 050F  
 075F  
 for Glasswasher/Cupwasher (LAMBER)  
 since 1/10/00 SUPERQS - S200 - S280 - S510  
 since 1/04/03 DSP1 - DSP2 - DSP3 - GS4 - GS5



LAMBER 0301745

LAMBER 0301747

**3351029 POWER RELAY FINDER 62.82.8.230.0300**  
 230V 50/60Hz  
 2 contacts NO 16A



LAMBER 0301794

**3351008 POWER RELAY FINDER 62.83.8.230.0000**  
 230V 50/60Hz  
 3 exchange contacts 16A



LAMBER 0301746

**5072234 POWER RELAY FINDER 62.83.8.230.0300**  
 complete with bracket  
 230V 50/60Hz  
 3 changeover contacts 16A  
 for Dishwasher (LAMBER) 050F



LAMBER 0301795

**3351900 POWER RELAY ITALIANA RELÉ B2-3**  
 3 exchange contacts - contact capacity 16A  
 coil 230V 50/60Hz



LAMBER 0300063

## Rinse aid pumps and accessories

**3090040 HYDRAUL.RINSE AID INJECTOR N6 E 05 G4G6**  
 with diaphragm in EPDM  
 minimum pressure 0.5 bar  
 intake side connection for tube 4 mm.  
 pressure side connection for tube 6 mm.



LAMBER 0500057

**3090308 HYDRAULIC DISPENSER DIB-E**  
 open back fitting for connection to the  
 auxiliary pump  
 hydraulic system for rinse aid dosing  
 in dishwashers, it does not need  
 power connection  
 adjustable flow rate: 0÷3 cm<sup>3</sup>  
 connection between solenoid valve & boiler (dib-e)  
 for Pan/utensilwashing machines (LAMBER) P700



LAMBER



Suitable for:

**3090016 HYDRAULIC DISPENSER TYPE 3000**  
for rinse aid - flow rate max 3.6 cc  
with inspectionable filter - silicone valves  
neoprene/nylon diaphragm



LAMBER 0599999

**3090017 SUCTION FILTER TYPE 3000**



LAMBER 0200443

**3090001 HYDRAULIC RINSE AID INJECTOR**  
for rinse aid



LAMBER

Suitable for:

**3090003 INLET VALVE FOR RINSE AID INJECTOR**



LAMBER 0200425

## Salt containers and accessories

**3067001 SALT CONTAINER**



LAMBER 0200149

## Scale removers for dishwashers

**7102106 SCALE REMOVER COMPACT UNIT**  
for DISHWASHER LAMBER  
for Dishwasher (LAMBER) F85 - F92 - 01F - 040F  
045F - 050F - 075F  
for Glasswasher/Cupwasher (LAMBER) SUPER QS - S260  
S280 - S400 - S460 - S510



LAMBER 0200010

**3094005 4 COLUMN SCALE REMOVER**  
width 165 mm - length 390 mm  
for Dishwasher (LAMBER)



LAMBER 0200011



## Selector switches

### 3059019 COMPLETE SELECTOR SWITCH POSITIONS 0-3

3 contacts NO  
for Dishwasher hood type (LAMBER)  
since 1/01/00 L21 - L25 - 015/24L



LAMBER 0300206

LAMBER 0301019

LAMBER 0301025

### 3057283 SELECTOR SWITCH COMPLETE 0-1 POSITION

2-poles - 20A 690V  
for Dishwasher conveyor type (LAMBER) LINEAR



LAMBER 0301020

### 3057300 SELECTOR SWITCH COMPLETE 0-2 POSITIONS

3-poles - 16A 690V  
for Dishwasher pull-through (LAMBER)  
Series MATIC



LAMBER 0301022

## Solenoid valves

**3120005 SOLEN. VALVE ELBI TYPE 329 1 WAY 180°**  
220/240V 50/60Hz - max. temperature 90°C  
inlet 3/4" - outlet  $\varnothing$  10.5 mm



LAMBER 0300025

**3120007 SOLEN. VALVE ELBI TYPE 349 2 WAY 180°**  
220/240V 50/60Hz - max. temperature 90°C  
inlet 3/4" - two outlets  $\varnothing$  10.5 mm



LAMBER 0300056

LAMBER 0301149

**7102776 SOLENOID VALVE BURKERT 6281EV 1/2"FF**  
coil 230V 50/60Hz 8W  
EPDM sealing - orifizio  $\varnothing$  13 mm - PN 2-16 bar  
with 2 brass receptacles 1/2"MF  
for Dishwasher conveyor type (LAMBER) V1200 - V600  
for Dishwasher pull-through (LAMBER) M115 - M150  
M150A  
for Pan/utensilwashing machines (LAMBER) LP31  
LP38 - LP6 - LP8 - PT1500 - PT850



LAMBER 0301159

**3120558 SOLENOID VALVE L182B17 3/4"FF 24V**  
EX L180  
for water  
NC  
max. temperature 100°C  
max. differential pressure 16 bar  
coil 24V 50/60Hz  
for Pan/utensilwashing machines (LAMBER)  
since 1/01/04 LP6



LAMBER 0300070



Suitable for:

# LAMBER



**6240020 SOLENOID VALVE SWITCHOVER 3-WAY**  
 230V 50/60Hz - max. temperature 90°C  
 3 outlets  $\varnothing$  10.5 mm  
 for Glasswasher/Cupwasher (LAMBER) S400EK-ADD  
 S460EK-ADD - S480EK-ADD



LAMBER 0301161

Suitable for:

**3120548 SOLENOID VALVE 1/2"FF 24V**  
 for Dishwasher pull-through (LAMBER)  
 Series LINEAR - Series MATIC - M115 - M150



LAMBER 0300173

## Springs

**3250224 DOOR SPRING 125 mm**  
 for LP6



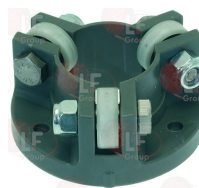
LAMBER 0800161

**3250087 HOOD SPRING  $\varnothing$  40x350 mm**  
 for L20-L21-L25-015-24L



LAMBER 0800711

**3063111 HOOD BEARINGS CAGE**  
 for Dishwasher hood type (LAMBER) L20 - L21 - L25  
 015/24L



LAMBER GA0150007

LAMBER 0800020

## Supports

**5026754 SPACER BRASS**  
 M8 thread  
 for Dishwasher hood type (LAMBER) A240 - A410  
 DSP5 - GS25 - L18 - L20 - L21 - L24 - L25  
 L305 - 015/24L



LAMBER 0800110

**3743145 FLAT WASHER M8**  
 internal/external  $\varnothing$  8.4/16 mm - thickness 1.6 mm  
 stainless steel - UNI 6592 - DIN 125 A - ISO 7089



LAMBER 0800028



Suitable for:

**3786404 GASKET NYLTITE  $\varnothing$  11.5x7.5x3.5 mm**



LAMBER 0200099

**5043648 SUPPORT FOR WATER OUTLET**

length 100 mm  
for Dishwasher (LAMBER) MATIC10 - M150A  
for Dishwasher pull-through (LAMBER) MA-10 - MA-20  
MA-33 - MA-39 - MA-49 - MA-59 - MATIC20  
MATIC33 - MATIC33A - MATIC39 - MATIC49  
MATIC49A - MATIC59 - MATIC59A - M115 - M180  
M180A  
for Pan/utensilwashing machines (LAMBER) LC-350  
LC-500 - M150  
for Pan/utensilwashing machines conveyor type  
(LAMBER) M130



LAMBER 0800094

## Supports for wash and rinse arms

**3743239 RINSE SUPPORT UNION**

for Dishwasher (LAMBER) 040F - 045F  
for Glasswasher/Cupwasher (LAMBER) MINIBAR  
SUPERQS - S200 - S280 - S510



LAMBER 0200096

**3743221 WASH DRUM EXTENSION 1"1/4**

for Dishwasher (LAMBER) F85 - F92 - 01F - 050F  
075F



LAMBER 0200126

**3743237 WASH DRUM EXTENSION 1"1/4**

for Dishwasher (LAMBER) 040F - 045F  
for Glasswasher/Cupwasher (LAMBER) DSP1 - DSP2  
DSP3 - GS4 - GS5 - MINIBAR - SUPERQS - S200  
S280 - S400EK - S510



LAMBER 0201451



# LAMBER



Suitable for:

# LAMBER



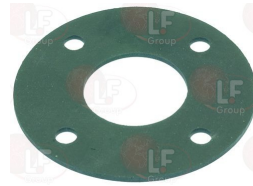
**3743220 WASH DRUM HOLDER 1"1/4**  
base ø 107 mm  
total height 40 mm  
for Dishwasher hood type (LAMBER) L20 - L21



LAMBER 0200118

Suitable for:

**3743218 DRUM SUPPORT GASKET**  
for Dishwasher (LAMBER) F85 - F92 - 01F - 050F  
075F  
for Dishwasher hood type (LAMBER) L25 - 015/24L



LAMBER 0200097

**3743219 WASH DRUM HOLDER 1"1/4**  
base ø 107 mm  
total height 30mm  
for Dishwasher (LAMBER) F85 - F92 - 01F - 045F  
050F - 075F  
for Dishwasher hood type (LAMBER) L25 - 015/24L



LAMBER 0201458

**3743218 DRUM SUPPORT GASKET**  
for Dishwasher (LAMBER) F85 - F92 - 01F - 050F  
075F  
for Dishwasher hood type (LAMBER) L25 - 015/24L



LAMBER 0200097

## Switch-disconnectors

**3057247 SELECTOR SWITCH SCHNEIDER 0-1 POS. 125A**  
3 NO contacts



LAMBER 0301080

## Switches

**1319005 BIPOLAR SWITCH 16A 250V**



LAMBER 0301000





## Switches

**3319727 GREEN BIPOLAR SWITCH 16A 250V**  
 NO  
 mounting hole 21x17 mm - button 17x13 mm  
 for Dishwasher (LAMBER)  
 since 1/01/04 F85 - F92 - 01F - 045F - 050F  
 075F  
 for Glasswasher/Cupwasher (LAMBER) S400EK



LAMBER 0301000

LAMBER 0301051

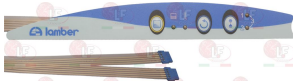
LAMBER 0301066

**3319579 PUSH-BUTTON ELLIPTICAL 17x13 mm GREEN**



LAMBER 0301066

**7105364 MEMBRANE CONTROL PANEL**  
 for Dishwasher (LAMBER) F85 GS6EK - 045F - 050F  
 for Glasswasher/Cupwasher (LAMBER) SUPERQS - S260  
 S280 - S510



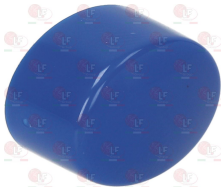
LAMBER 0502008

**3319217 MONOPOLAR SWITCH**  
 16(4)A/250V  
 mounting hole 28x28 mm  
 for Dishwasher (LAMBER) 01F - 045F - 050F - 075F



LAMBER 0301100+0301062+

**5045318 PUSH BUTTON ELLIPTICAL 17x13 mm BLUE**  
 for Dishwasher (LAMBER) DSP26 - DSP4 - F85 - L21  
 L24 - L25 - NS455 - 01F - 015/24L - 040F  
 045F - 050F - 075F  
 for Dishwasher hood type (LAMBER) DSP5 - L20  
 for Glasswasher/Cupwasher (LAMBER) DSP2 - DSP3  
 SUPERQS - S200 - S240 - S260 - S280 - S400  
 S460 - S480 - S510



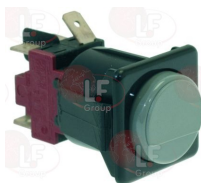
LAMBER 0301068

**9319068 PUSH-BUTTON 1-POLE BLACK 10A 250V**  
 max. temperature 100°C  
 mounting hole 13x20 mm  
 for Dishwasher (LAMBER) DSP4  
 for Glasswasher/Cupwasher (LAMBER) DSP1 - DSP2  
 DSP3



LAMBER 0301018

**3319357 ROLD BIPOLAR GREY PUSH BUTTON**  
 16A 250V  
 mounting hole 28x28 mm  
 for Glasswasher/Cupwasher (LAMBER) GS4



LAMBER 0301101

**3319236 ROLD GREEN BIPOLAR SWITCH**  
 16A(4)-250V  
 mounting hole 28x28 mm  
 for Dishwasher (LAMBER) F85 - F92 - 01F - 040F  
 045F - 050F - 075F  
 for Dishwasher hood type (LAMBER) L20 - L21 - L25  
 015/24L  
 for Glasswasher/Cupwasher (LAMBER) MINIBAR  
 SUPERQS - S200 - S240 - S280 - S510



LAMBER 0301005



Suitable for:

# LAMBER



**3319230 ROLD GREY CHANGE OVER SWITCH**  
16(4)A-250V  
mounting hole 28x28 mm  
for Dishwasher (LAMBER)



LAMBER 0301004

Suitable for:

**9319060 SWITCH 2 POLE ORANGE 12A 250V**  
mounting hole 13x20 mm  
for Glasswasher/Cupwasher (LAMBER) DSP1 - DSP2  
DSP3



LAMBER 0301003

## Telethermometers

**3441086 TELE-THERMOMETER  $\varnothing$  52 mm 0-120°C**  
PVC covered capillary 1500 mm  
spring bulb  $\varnothing$  6x80 mm  
for Dishwasher hood type (LAMBER) 015/24L



LAMBER 0500009

**3441011 TELE-THERMOMETER BLACK 56x25 mm 0-120°C**  
plastic case  
capillary length 1500 mm  
bulb  $\varnothing$  6x15 mm



LAMBER 0500005

**3441076 TELE-THERMOMETER 63x11 mm 0-120°C**  
plastic case  
covered capillary 2000 mm  
bulb  $\varnothing$  6x33 mm



LAMBER 0500008

## Terminal blocks

**7101217 TERMINAL BLOCK 6-POLES**  
for Dishwasher (LAMBER) DSP4 - F840 - F85 - F92  
F94 - GS6 - GS800 - NS455 - NS456 - 01F - 045F  
050F - 075F  
for Dishwasher hood type (LAMBER) DSP5 - L18 - L20  
L21  
for Glasswasher/Cupwasher (LAMBER) S510  
for Pan/utensilwashing machines (LAMBER) P440



LAMBER 0300751



## Thermostats

**3744027 SETTING THERMOSTAT 0°-90°C**  
 capillary 1000 mm  
 bulb ø 6.5x90 mm  
 for Dishwasher conveyor type (LAMBER)  
 Series LINEAR  
 for Dishwasher pull-through (LAMBER)  
 Series MATIC



LAMBER 0300270

**3444069 SINGLE-PHASE SAFETY THERMOSTAT 110°C**  
 manual reset  
 covered capillary 2000 mm  
 bulb ø 6.5x85 mm  
 for Dishwasher (LAMBER) F85 - F92 - GS6 - 01F  
 040F - 045F - 050F - 075F  
 for Glasswasher/Cupwasher (LAMBER) GS4 - MINIBAR  
 SUPERQS - S200 - S280 - S510  
 for Pan/utensilwashing machines (LAMBER) LP31  
 LP38 - PT1500



LAMBER 0300004

LAMBER 0300196

**3744026 SINGLE-PHASE THERMOSTAT LS1 120°C**  
 manual reset  
 10(2.5)A 250V  
 capillary 1500 mm  
 bulb ø 5 - length 130 mm  
 for Dishwasher conveyor type (LAMBER)  
 Series LINEAR  
 for Dishwasher pull-through (LAMBER)  
 Series MATIC



LAMBER 0300305

**3444280 SINGLE-PHASE THERMOSTAT 0-90°C**  
 covered capillary 1500 mm  
 bulb ø 6.5x90 mm  
 15A 250V  
 with adjusting screw



LAMBER 0300005

**5045898 THERMOSTAT 70°C TR2**  
 bulb ø 6x97 mm  
 covered capillary 2150 mm  
 for Dishwasher (LAMBER) F840CV - F85 - F92EK  
 F94EK - L305CV - NS456 - 01F - 01FEK - 040F  
 040FEK - 045F - 045FEK - 050F - 075F - 075FEK  
 for Dishwasher hood type (LAMBER) L20 - L21  
 L21EK - L24EK - L25EK - 015/24L  
 for Glasswasher/Cupwasher (LAMBER) GS4EK - GS45EK  
 GS5EK - MINIBAR - SUPERQS - S200 - S240 - S260  
 S280 - S400EK - S460EK - S480EK - S510  
 for Pan/utensilwashing machines (LAMBER) LP31EK  
 LP38EK - LP6EK - LP8EK - PT1500EK - PT800EK  
 PT850EK - P440CV - P440EK - P550EK - P700EK



LAMBER 0300007



Suitable for:

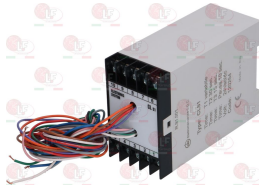
# LAMBER



Suitable for:

## Timers

**3446076 ELECTRONIC TIMER CL51 24V**  
for Pan/utensilwashing machines (LAMBER) LP6



LAMBER 0300810

**3322339 PROGRAMMER**  
for Dishwasher (LAMBER) F85



LAMBER 0300823

**7100869 TIMER NDWT 30/F 230V 50/60Hz**  
for Glasswasher/Cupwasher (LAMBER) DSP2  
for Dishwasher (LAMBER) DSP4  
for Dishwasher hood type (LAMBER) DSP5  
for Glasswasher/Cupwasher (LAMBER) DSP1 - DSP26  
DSP3 - MINIBAR



LAMBER 0300829

## Tubing and hoses

**7102273 HOSE 110 mm**  
for Dishwasher (LAMBER) DSP4 - F85 - F92 - GS800  
NS455 - NS456 - 01F - 045F - 050F - 075F



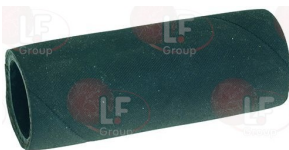
LAMBER 0500600

**3248124 INLET HOSE**  
length 145 mm  
internal  $\varnothing$  37/28 mm  
for Dishwasher (LAMBER) 040F  
for Glasswasher/Cupwasher (LAMBER) DSP1 - DSP2  
DSP3 - MINIBAR - SUPERQS - S200 - S280 - S510



LAMBER 0201904

**3248125 INLET HOSE**  
external  $\varnothing$  39 mm  
internal  $\varnothing$  28 mm  
length 100 mm  
for Dishwasher (LAMBER) GS6 - 01F - 075F  
for Glasswasher/Cupwasher (LAMBER) GS4 - MINIBAR  
SUPERQS - S280



LAMBER 0200131

**3248126 INLET HOSE**  
external  $\varnothing$  37 mm  
internal  $\varnothing$  26 mm  
for Dishwasher (LAMBER) F85 - F92 - 01F - 045F  
050F - 075F



LAMBER 0200213



# LAMBER



Suitable for:

**3248122 INLET HOSE  $\varnothing$  47x38 mm**  
length 115 mm  
for Dishwasher (LAMBER) F85 - F92 - 050F - 075F  
for Dishwasher hood type (LAMBER) L20 - L21



LAMBER 0200133

Suitable for:

**3248120 INLET HOSE 175 mm**  
internal  $\varnothing$  37 mm  
for Dishwasher (LAMBER) F85 - F92 - 045F



LAMBER 0200244

**3248119 INLET HOSE 300 mm**  
internal  $\varnothing$  45 mm  
for Dishwasher (LAMBER) 01F - 040F - 075F  
for Dishwasher hood type (LAMBER) L20 - L21



LAMBER 0200232

**3349483 INLET TUBING**  
internal  $\varnothing$  62mm - length 50 mm  
for Dishwasher hood type (LAMBER) L25 - 015/24L



LAMBER 0201914

**3248123 OUTLET HOSE**  
length 100 mm  
internal  $\varnothing$  38/29 mm  
for Glasswasher/Cupwasher (LAMBER) DSP1 - DSP2  
DSP3 - MINIBAR - SUPERQS - S200 - S240 - S280  
S400EK



LAMBER 0201905

**3349484 OUTLET HOSE**  
internal  $\varnothing$  42/58 mm length 150mm  
for Dishwasher hood type (LAMBER) L25 - 015/24L



LAMBER 0201919

**3248121 OUTLET HOSE 130 mm**  
internal  $\varnothing$  37 mm  
for Dishwasher (LAMBER) F85 - F92 - 050F



LAMBER 0201907

**3248093 OUTLET HOSE 45 mm**  
external  $\varnothing$  45/35 mm  
internal  $\varnothing$  38/26 mm  
for Dishwasher (LAMBER) GS6 - 040F  
for Glasswasher/Cupwasher (LAMBER) GS4 - MINIBAR  
S510



LAMBER 0200031

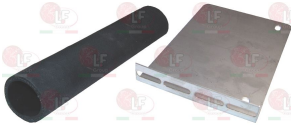


Suitable for:

# LAMBER



**3122672 PUMP HOSE WITH BRACKET**  
internal  $\varnothing$  38mm  
for Dishwasher hood type (LAMBER) L20 - L21



LAMBER 0201924+0406258

Suitable for:

**3349482 PUMP INLET HOSE**  
internal  $\varnothing$  27/39mm - length 140mm  
for Glasswasher/Cupwasher (LAMBER) MINIBAR  
SUPERQS - S200 - S240 - S400EK



LAMBER 0201921

**3122671 PUMP INLET/OUTLET HOSE**  
inlet internal  $\varnothing$  40 mm  
outlet  $\varnothing$  38/45  
for Dishwasher (LAMBER) F85 - F92 - 050F



LAMBER 0201922+0201923

**3349480 PUMP OUTLET HOSE**  
internal  $\varnothing$  52mm - length 130 mm  
for Dishwasher hood type (LAMBER) L25 - 015/24L



LAMBER 0200122

**3349481 TUBING INLET**  
internal  $\varnothing$  62 mm - length 120 mm  
for Dishwasher hood type (LAMBER) L25 - 015/24L



LAMBER 0201900

**3349471 TUBING OUTLET**  
internal  $\varnothing$  38mm - length 50 mm  
for Dishwasher (LAMBER) 045F



LAMBER 0200119

## Wash and rinse arms for warewashers

**7103494 ARM ASSEMBLY WASH 605/555 mm**  
for Pan/utensilwashing machines (LAMBER) PT800EK  
P700EK



LAMBER 0500518



## Wash and rinse arms for warewashers

**3743108 BOTTOM WASH ARM 375 mm**  
for Glasswasher/Cupwasher (LAMBER) S200  
for Glasswasher/Cupwasher (LAMBER) GS4 - GS5



LAMBER 0200801

LAMBER 0200858

**1186362 O-RING 02021 EPDM**  
ring thickness 1.78 mm - internal  $\varnothing$  5.28 mm  
for Dishwasher (LAMBER) F85 - F92 - 01F - 045F  
050F - 075F  
for Glasswasher/Cupwasher (LAMBER) MINIBAR



LAMBER 0200303

**7151268 BUSHING WASH ARM ASSEMBLY  $\varnothing$  45x25x10mm**  
for Pan/utensilwashing machines (LAMBER)  
Series LP



LAMBER 0807003

**3743107 LOWER BOTTOM WASH ARM 375 mm**  
for Dishwasher (LAMBER) 040F  
for Glasswasher/Cupwasher (LAMBER) MINIBAR  
SUPERQS - S280  
for Glasswasher/Cupwasher (LAMBER) GS4 - GS5



LAMBER 0200296

LAMBER 0200855

**3743580 NUT FOR RINSE NOZZLES OF ST. STEEL**  
thread M12x1 - height 10 mm  
for wrench No. 14  
for Dishwasher (LAMBER) 01F - 040F - 045F - 050F  
075F  
for Glasswasher/Cupwasher (LAMBER) GS4 - GS5  
SUPERQS - S200 - S240 - S280 - S510



LAMBER 0200608

LAMBER 0200625

**3501220 RINSE JET  $\varnothing$  1.5 mm**  
for Dishwasher (LAMBER)  
since 1/09/98 F85 - F92 - 01F - 040F - 045F  
050F - 075F  
for Glasswasher/Cupwasher (LAMBER)  
since 1/09/98 GS4 - GS5 - SUPERQS - S200 - S240  
S280 - S510



LAMBER 0201164

**3743226 COMPLETE WASH ARM 375 mm**  
for Dishwasher (LAMBER) 040F  
for Glasswasher/Cupwasher (LAMBER) MINIBAR  
SUPERQS - S200 - S280  
for Glasswasher/Cupwasher (LAMBER) DSP1 - DSP2  
DSP3 - MINIBAR - S240 - S260 - S400 - S460  
S480



LAMBER 0200806

LAMBER 0200856



Suitable for:

# LAMBER



Suitable for:

**3743227 LOWER RINSE ARM 470 mm**  
 for Dishwasher (LAMBER)  
 till 1/01/12 F85 - F92 - 01F - 050F  
 for Dishwasher hood type (LAMBER)  
 till 1/01/12 L20 - L25 - 015/24L  
 for Pan/utensilwashing machines (LAMBER)  
 till 1/01/12 P550



LAMBER 0200012

LAMBER 0200286

LAMBER 0200287

**3743580 NUT FOR RINSE NOZZLES OF ST. STEEL**  
 thread M12x1 - height 10 mm  
 for wrench No. 14  
 for Dishwasher (LAMBER) 01F - 040F - 045F - 050F  
 075F  
 for Glasswasher/Cupwasher (LAMBER) GS4 - GS5  
 SUPERQS - S200 - S240 - S280 - S510



LAMBER 0200608

LAMBER 0200625

**3743229 RINSE ARM ASSEMBLY BUSHING**  
 for Dishwasher (LAMBER) F85 - F92 - 01F - 040F  
 045F - 050F - 075F  
 for Glasswasher/Cupwasher (LAMBER) GS4 - GS5  
 MINIBAR - SUPERQS - S200 - S240 - S280 - S510



LAMBER 0200086

**3743233 STAINLESS STEEL RINSE SHAFT 30x20x18**  
 for Dishwasher (LAMBER) F85 - F92 - 01F - 040F  
 045F - 050F - 075F  
 for Glasswasher/Cupwasher (LAMBER) GS4 - GS5  
 MINIBAR - SUPERQS - S200 - S240 - S280 - S510



LAMBER 0200038

**3743234 NUT FOR RINSE ARM FASTENING M12x1**  
 for Dishwasher (LAMBER) DSP4  
 for Glasswasher/Cupwasher (LAMBER) DSP1 - DSP2  
 DSP3 - MINIBAR



LAMBER 0800205

**1186362 O-RING 02021 EPDM**  
 ring thickness 1.78 mm - internal  $\varnothing$  5.28 mm  
 for Dishwasher (LAMBER) F85 - F92 - 01F - 045F  
 050F - 075F  
 for Glasswasher/Cupwasher (LAMBER) MINIBAR



LAMBER 0200303

**3501220 RINSE JET  $\varnothing$  1.5 mm**  
 for Dishwasher (LAMBER)  
 since 1/09/98 F85 - F92 - 01F - 040F - 045F  
 050F - 075F  
 for Glasswasher/Cupwasher (LAMBER)  
 since 1/09/98 GS4 - GS5 - SUPERQS - S200 - S240  
 S280 - S510



LAMBER 0201164





Suitable for:

**7151252 PRE-RINSE ARM MATIC COMPLETE**  
 length 530 mm -  $\varnothing$  16 mm - fitting  $\varnothing$  25 mm  
 for Dishwasher (LAMBER) MATIC10  
 for Dishwasher pull-through (LAMBER) MA-10 - MA-20  
 MA-33 - MA-39 - MA-49 - MA-59 - MATIC20  
 MATIC33 - MATIC33A - MATIC39 - MATIC39A  
 MATIC49 - MATIC49A - MATIC59 - MATIC59A



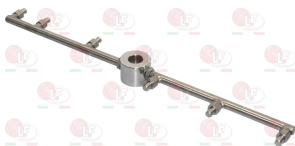
LAMBER 0200255

**7151247 PRE-RINSE ARM 590 mm**  
 $\varnothing$  16 mm - fitting  $\varnothing$  25 mm  
 for Dishwasher conveyor type (LAMBER) LINEAR30  
 LINEAR80  
 for Dishwasher hood type (LAMBER) LINEAR40  
 LINEAR60



LAMBER 0200377

**7151249 RINSE ARM ASSEMBLY LOWER 470 mm**  
 for Dishwasher hood type (LAMBER) DSP5



LAMBER 0200814

**7151248 RINSE ARM ASSEMBLY UPPER 375 mm**  
 for Dishwasher hood type (LAMBER) DSP5



LAMBER 0200813

Suitable for:

**7151245 PRE-RINSE ARM 530 mm**  
 $\varnothing$  16 mm - fitting  $\varnothing$  25 mm  
 for Dishwasher pull-through (LAMBER) MA-39 - MA-49  
 MA-59 - MATIC39 - MATIC49 - MATIC49A - MATIC59  
 MATIC59A - M180 - M180A  
 for Pan/utensilwashing machines conveyor type  
 (LAMBER) M130



LAMBER 0200375

**3743229 RINSE ARM ASSEMBLY BUSHING**  
 for Dishwasher (LAMBER) F85 - F92 - 01F - 040F  
 045F - 050F - 075F  
 for Glasswasher/Cupwasher (LAMBER) GS4 - GS5  
 MINIBAR - SUPERQS - S200 - S240 - S280 - S510



LAMBER 0200086

**7151251 RINSE ARM STAINL. STEEL 490 mm**  
 $\varnothing$  16 mm - fitting  $\varnothing$  25 mm  
 for Dishwasher (LAMBER) MATIC10  
 for Dishwasher pull-through (LAMBER) MA-10 - MA-20  
 MA-33 - MA-39 - MA-49 - MA-59 - MATIC20  
 MATIC33 - MATIC33A - MATIC39 - MATIC49  
 MATIC59



LAMBER 0200254



Suitable for:

# LAMBER



**7151246 RINSE ARM 590 mm**  
 ø 16 mm - fitting ø 25 mm  
 for Dishwasher conveyor type (LAMBER) LINEAR30  
 for Dishwasher hood type (LAMBER) LINEAR40  
 LINEAR60 - LINEAR80



LAMBER 0200376

Suitable for:

**7151243 RINSE ARM 830 mm**  
 ø 16 mm - fitting ø 25 mm  
 for Pan/utensilwashing machines electric (LAMBER)  
 LP3000



LAMBER 0200367

**3743540 STAINLESS STEEL DISK 50x18x2 mm**  
 for Dishwasher hood type (LAMBER) L20 - L21 - L25  
 015/24L



LAMBER 0800030

**3743241 STAINLESS STEEL WASH ARM 550 mm**  
 for Dishwasher (LAMBER) F85 - F92 - 01F - 050F  
 075F  
 for Dishwasher hood type (LAMBER) L20 - L21 - L25  
 015/24L



LAMBER 0500500

**7111964 WASHING COLUMN INTERNAL TANK**  
 height 110 mm - lower ø 70 mm  
 for Dishwasher (LAMBER) F85 - F85PS - F92 - F94  
 050F - 075F



LAMBER 0201485

**3743577 TOP BUSHING**  
 for Dishwasher (LAMBER)  
 till 1/03/96 F85 - F92



LAMBER 0202113

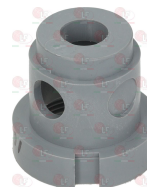
**3743110 FLAT GASKET ø 57x41x2 mm PTFE**  
 for Dishwasher (LAMBER) F85 - F92 - 01F - 050F  
 075F  
 for Dishwasher hood type (LAMBER) L20 - L21



LAMBER 0200222

LAMBER 0800052

**3743109 WASHING IMPELLER DRUM**  
 for Dishwasher (LAMBER) F85 - F92 - 01F - 050F  
 075F  
 for Dishwasher hood type (LAMBER) L20 - L21 - L25  
 015/24L



LAMBER 0201454

LAMBER 0202101

**3743539 STAINLESS STEEL DISK**  
 for Dishwasher (LAMBER)  
 till 1/03/97 F85 - F92



LAMBER 0800061



Suitable for:

**3528060 WASHER 50x8x2 mm**  
for Dishwasher (LAMBER)  
till 1/03/97 F85 - F92



LAMBER 0800053

**3743231 UPPER ARM ASSEMBLY DRUM**  
for Dishwasher (LAMBER)  
till 1/01/12 F85 - F92 - 050F - 075F  
for Dishwasher (LAMBER)  
till 1/01/12 01F



LAMBER 0201151

**3743564 BUSHING**



LAMBER 0800130

**3743223 BUSHING FOR RINSE DRUM  $\phi$  13.3 mm**



LAMBER 0800499

**3743580 NUT FOR RINSE NOZZLES OF ST. STEEL**  
thread M12x1 - height 10 mm  
for wrench No. 14  
for Dishwasher (LAMBER) 01F - 040F - 045F - 050F  
075F  
for Glasswasher/Cupwasher (LAMBER) GS4 - GS5  
SUPERQS - S200 - S240 - S280 - S510



LAMBER 0200608

LAMBER 0200625

# LAMBER

Suitable for:



**3743695 BLOCK FOR RINSE ARM**  
for Dishwasher (LAMBER) F85



LAMBER 0800501

**3743224 BUSHING FOR RINSE DRUM  $\phi$  16.2 mm**



LAMBER 0800498

**3743234 NUT FOR RINSE ARM FASTENING M12x1**  
for Dishwasher (LAMBER) DSP4  
for Glasswasher/Cupwasher (LAMBER) DSP1 - DSP2  
DSP3 - MINIBAR



LAMBER 0800205

**1186362 O-RING 02021 EPDM**  
ring thickness 1.78 mm - internal  $\phi$  5.28 mm  
for Dishwasher (LAMBER) F85 - F92 - 01F - 045F  
050F - 075F  
for Glasswasher/Cupwasher (LAMBER) MINIBAR



LAMBER 0200303



Suitable for:

**3743674 RH RINSE ARM 200 mm**  
for Dishwasher (LAMBER) 01F - 045F - 050F - 075F  
for Dishwasher hood type (LAMBER) 015/24L  
for Glasswasher/Cupwasher (LAMBER) S510



LAMBER 0200370

**3501220 RINSE JET ø 1.5 mm**  
for Dishwasher (LAMBER)  
since 1/09/98 F85 - F92 - 01F - 040F - 045F  
050F - 075F  
for Glasswasher/Cupwasher (LAMBER)  
since 1/09/98 GS4 - GS5 - SUPERQS - S200 - S240  
S280 - S510



LAMBER 0201164

**3743246 SPINDLE RINSE ARM**  
for Dishwasher hood type (LAMBER) L25 - 015/24L



LAMBER 0201002

LAMBER 0201003

**3743228 UPPER RINSE ARM 420 mm**  
for Dishwasher (LAMBER) F85 - F92 - 01F - 050F  
075F  
for Dishwasher hood type (LAMBER) L20 - L21 - L25  
015/24L  
for Pan/utensilwashing machines (LAMBER) P550



LAMBER 0200802

LAMBER 0200852

LAMBER 0200804

LAMBER 0200807

# LAMBER



Suitable for:

**5042292 RINSE ARM LH 200 mm**  
for Dishwasher (LAMBER) F840 - F85 - F92 - 01F  
045F - 050F - 075F  
for Dishwasher hood type (LAMBER) A410 - GS25  
L20 - L21 - L24 - L25 - L305 - 015/24L  
for Glasswasher/Cupwasher (LAMBER) GS45 - S510  
for Pan/utensilwashing machines (LAMBER) P550



LAMBER 0200371

**3501225 RINSE JET ø 1.5 mm**  
universal  
for Dishwasher (LAMBER)  
since 1/09/98 F85 - F92 - 040F  
for Dishwasher hood type (LAMBER) L20 - L21  
for Glasswasher/Cupwasher (LAMBER)  
since 1/09/98 GS4 - GS5 - SUPERQS - S200 - S240  
S280 - S510  
for Dishwasher (LAMBER) L25



LAMBER 0201165

**3020082 OLIVE FOR PIPE ø 12 mm**  
for model PEL 22-24-25

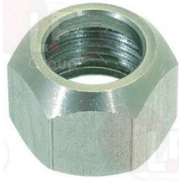


LAMBER 0200182



Suitable for:

**3743235 RING NUT FOR RINSE PIPE**



LAMBER 0200181

**3743604 WASH ARM**  
length 385 mm  
for Dishwasher pull-through (LAMBER) MATIC10  
MATIC20 - MATIC30 - MATIC39 - MATIC49  
MATIC59



LAMBER 0500515

**3786407 WASH ARM GASKET**  
for Dishwasher pull-through (LAMBER) MATIC10  
MATIC20 - MATIC33 - MATIC39 - MATIC49  
MATIC59



LAMBER 0200400

**3743230 WASH ARM ASSEMBLY HEAD**  
for Dishwasher (LAMBER)  
till 1/03/97 F85 - F92



LAMBER 0200121

**1528622 HEXAGON HEAD SCREW M8x16**  
stainless steel - UNI 5739 - DIN 933 - ISO 4017



LAMBER 0800009

## LAMBER



Suitable for:

**3743242 RINSE ELBOW FITTING**  
for Dishwasher hood type (LAMBER) L25 - 015/24L



LAMBER 0201836

**5045575 PIN FOR WASH ASSEMBLY FASTENING**  
for Dishwasher conveyor type (LAMBER) LINEAR30  
LINEAR40 - LINEAR60 - LINEAR80  
for Dishwasher pull-through (LAMBER) LC350 - LC500  
MA-10 - MA-20 - MA-33 - MA-39 - MA-49 - MA-59  
MATIC10 - MATIC20 - MATIC33 - MATIC33A  
MATIC39 - MATIC49 - MATIC49A - MATIC59  
MATIC59A - M115 - M130 - M150 - M150A - M180  
M180A



LAMBER 0200619

**3743110 FLAT GASKET  $\varnothing$  57x41x2 mm PTFE**  
for Dishwasher (LAMBER) F85 - F92 - 01F - 050F  
075F  
for Dishwasher hood type (LAMBER) L20 - L21



LAMBER 0200222

LAMBER 0800052

**3743539 STAINLESS STEEL DISK**  
for Dishwasher (LAMBER)  
till 1/03/97 F85 - F92



LAMBER 0800061



Suitable for:

**3528060 WASHER 50x8x2 mm**  
for Dishwasher (LAMBER)  
till 1/03/97 F85 - F92



LAMBER 0800053

# LAMBER



Suitable for:

**3743236 WASH ARM ASSEMBLY 540 mm**  
for Dishwasher hood type (LAMBER) L25 - 015/24L



LAMBER 0200094

LAMBER 0500501

**3743110 FLAT GASKET  $\varnothing$  57x41x2 mm PTFE**  
for Dishwasher (LAMBER) F85 - F92 - 01F - 050F  
075F  
for Dishwasher hood type (LAMBER) L20 - L21



LAMBER 0200222

LAMBER 0800052

**3743222 UPPER IMPELLER DRUM**  
for Dishwasher (LAMBER) F85 - F92 - 01F - 050F  
075F  
for Dishwasher hood type (LAMBER) L25  
since 1/09/01 L20 - L21



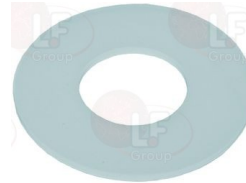
LAMBER 0202120

**3743575 DISK STAINLESS STEEL 50x22x1 mm**  
for Dishwasher (LAMBER) 01F - 050F - 075F



LAMBER 0800901

**3743112 GASKET FLAT NYLON  $\varnothing$  50x22x2 mm**  
for Dishwasher (LAMBER) 01F - 050F - 075F  
since 1/03/97 F85 - F92  
for Dishwasher hood type (LAMBER) L20 - L21 - L25  
015/24L



LAMBER 0800686

**3743238 WASH ARM ASSEMBLY BUSHING  $\varnothing$  18 mm**  
for Dishwasher (LAMBER) F85 - F92 - 040F - 045F  
for Dishwasher hood type (LAMBER) L20 - L21 - L25  
015/24L  
for Glasswasher/Cupwasher (LAMBER) DSP1 - DSP2  
DSP3 - GS4 - GS5 - MINIBAR - SUPERQS - S200  
S280 - S400EK



LAMBER 0202103



Suitable for:

**3743508 WASHER ARM ASSEMBLY  $\varnothing$  50x18x2 mm**  
for Dishwasher hood type (LAMBER) L25 - 015/24L



LAMBER 0800902

# LAMBER



Suitable for:

**3743109 WASHING IMPELLER DRUM**  
for Dishwasher (LAMBER) F85 - F92 - 01F - 050F 075F  
for Dishwasher hood type (LAMBER) L20 - L21 - L25 015/24L



LAMBER 0201454

LAMBER 0202101

**3743667 WASH ARM ASSEMBLY 557 mm**  
for Pan/utensilwashing machines (LAMBER) LP6 - LP8



LAMBER 0500510

**1063901 BEARING 6204 DDU NSK**  
external  $\varnothing$  47mm - internal  $\varnothing$  20mm - thickness 14mm



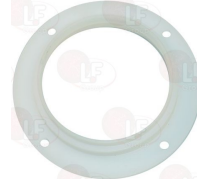
LAMBER 0802505

**3528065 HEXAGON HEAD SCREW M4x12**  
stainless steel - UNI 5739 - DIN 933 - ISO 4017



LAMBER 0800675

**7108887 RING FOR WASH ARM  $\varnothing$  85 mm**  
for Pan/utensilwashing machines (LAMBER) LP31EK LP38EK - LP6EK - LP8EK - PT1500EK - PT850EK



LAMBER 0200680

**1348814 TOOTHED WASHER EXT. M4**  
internal/external  $\varnothing$  4.3/8 mm - thickness 0.5 mm  
stainless steel - UNI 8842 A - DIN 6798 A



LAMBER 0800101

**3743880 WASH ARM 5-HOLE**  
for Glasswasher/Cupwasher (LAMBER)  
since 1/01/03 S510  
since 1/01/08 S510EK



LAMBER 0500502

**3743110 FLAT GASKET  $\varnothing$  57x41x2 mm PTFE**  
for Dishwasher (LAMBER) F85 - F92 - 01F - 050F 075F  
for Dishwasher hood type (LAMBER) L20 - L21



LAMBER 0200222

LAMBER 0800052



Suitable for:

**3186606 O-RING 0144 EPDM**  
ring thickness 3.53 mm - internal  $\varnothing$  39.69 mm



LAMBER 0200056

**7100428 WASHING COLUMN**  
for Dishwasher (LAMBER) DSP4 - 040F - 045F  
for Dishwasher hood type (LAMBER) L25  
for Glasswasher/Cupwasher (LAMBER) DSP26 - DSP3  
GS4 - GS45 - GS5 - MINIBAR - SUPERQS - S200  
S240 - S260 - S280 - S400 - S460 - S480 - S510



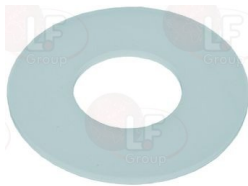
LAMBER 0201462

**3743225 WASH ARM 6-HOLE**  
for Dishwasher (LAMBER) F85 - F92 - 01F - 040F  
045F - 050F - 075F  
for Dishwasher hood type (LAMBER) L20 - L21  
for Glasswasher/Cupwasher (LAMBER)  
till 1/01/03 S510 DSP1 - DSP2 - DSP3 - GS4 - GS5  
MINIBAR - SUPERQS - S200 - S280 - S400EK



LAMBER 0500505

**3743112 GASKET FLAT NYLON  $\varnothing$  50x22x2 mm**  
for Dishwasher (LAMBER) 01F - 050F - 075F  
since 1/03/97 F85 - F92  
for Dishwasher hood type (LAMBER) L20 - L21 - L25  
015/24L



LAMBER 0800686

# LAMBER



Suitable for:

**3743238 WASH ARM ASSEMBLY BUSHING  $\varnothing$  18 mm**  
for Dishwasher (LAMBER) F85 - F92 - 040F - 045F  
for Dishwasher hood type (LAMBER) L20 - L21 - L25  
015/24L  
for Glasswasher/Cupwasher (LAMBER) DSP1 - DSP2  
DSP3 - GS4 - GS5 - MINIBAR - SUPERQS - S200  
S280 - S400EK



LAMBER 0202103

**3743575 DISK STAINLESS STEEL 50x22x1 mm**  
for Dishwasher (LAMBER) 01F - 050F - 075F



LAMBER 0800901

**5026454 O-RING 06162 EPDM**  
ring thickness 5.34 mm - internal  $\varnothing$  40.65 mm



LAMBER 0203011





Suitable for:

**3743222 UPPER IMPELLER DRUM**  
for Dishwasher (LAMBER) F85 - F92 - 01F - 050F  
075F  
for Dishwasher hood type (LAMBER) L25  
since 1/09/01 L20 - L21



LAMBER 0202120

**3743232 WASH SUPPORT DRUM**  
for Dishwasher (LAMBER)  
till 1/06/96 075F  
for Dishwasher hood type (LAMBER)  
till 1/06/96 015/24L



LAMBER 0200032

## Wash jets and accessories

**3501223 RINSE JET**  
for Dishwasher (LAMBER) F85 - F92 - GS6  
for Glasswasher/Cupwasher (LAMBER) - Series DSP  
MINIBAR



LAMBER 0200088

**3501164 RINSE JET DIFFUSER**



LAMBER 0200089

**3501218 RINSE JET CLAMP**  
for Dishwasher (LAMBER) F85 - F92 - GS6  
for Glasswasher/Cupwasher (LAMBER) - Series DSP  
MINIBAR



LAMBER 0200315



# LAMBER



Suitable for:

# LAMBER



**3501199 RINSE JET WITH SPINNER 1/8"**  
for Dishwasher (LAMBER) F85 - F92 - GS6  
for Glasswasher/Cupwasher (LAMBER) - Series DSP



LAMBER 0200132

**3501198 RINSE JET SUPPORT**  
for Glasswasher/Cupwasher (LAMBER) MINIBAR



LAMBER 0200250

**3501200 RINSE JET 1/8"**  
hole  $\varnothing$  0.9 mm  
for Dishwasher (LAMBER) 01F - 040F - 045F - 050F  
075F  
for Glasswasher/Cupwasher (LAMBER) GS4 - GS5  
MINIBAR - SUPERQS - S200 - S240 - S510



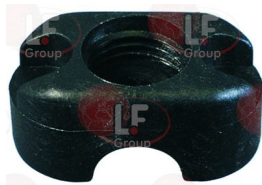
LAMBER 0200186

**3743578 STAINLESS STEEL RINSE JET  $\varnothing$  1.5 mm**  
for Dishwasher (LAMBER) 01F - 040F - 045F - 050F  
075F  
for Glasswasher/Cupwasher (LAMBER) GS4 - GS5  
SUPERQS - S200 - S240 - S280 - S510



LAMBER 0201171

**3743522 SUPPORT FOR RINSE SPRAYER**  
for Glasswasher/Cupwasher (LAMBER) MINIBAR



LAMBER 0200249

The data herewith contained may change without notice and LF SpA cannot be held responsible for possible errors stated or resulting by the use of this document. All rights reserved. No part of this publication may be reproduced without written permission by LF SpA.



## Distributing Components, Spare Parts & Accessories in original quality worldwide

- 
- LF SpA HEADQUARTERS**  
via Voltri, 80 - 47522 Cesena (FC) ITALY  
Tel. +39 0547 34 11 11 - Fax +39 0547 34 11 10  
[www.lfricambi724.it](http://www.lfricambi724.it) - [info@lfricambi.it](mailto:info@lfricambi.it)  
Export Dept. Tel. +39 0547 34 11 50 - Fax +39 0547 34 11 55  
[www.lfspareparts724.com](http://www.lfspareparts724.com) - [export@lfspareparts.com](mailto:export@lfspareparts.com)
- LF SpA HOUSEHOLD COMPONENTS DIVISION**  
Via Padriciano, 99 - AREA Science Park - 34149 Trieste (TS) ITALY  
Tel. +39 0547 34 12 42 - Fax +39 0547 34 12 48  
[www.lfspareparts724.com](http://www.lfspareparts724.com) - [info@lfspareparts.com](mailto:info@lfspareparts.com)
- EPGC Sas FRANCE**  
13, Rue des Forts - 59960 Neuville en Ferrain  
Tel. +33 (0)3 20 25 06 21 - Fax +33 (0)3 20 25 34 12  
[www.epgc.com](http://www.epgc.com) - [epgc@epgc.com](mailto:epgc@epgc.com)
- LF GmbH GERMANY**  
Junkersstrasse, 3 - D-82178 Puchheim - München  
Tel. +49 89 89 45 78 66 - Fax +49 89 89 45 78 88  
[www.lfersatzteile724.de](http://www.lfersatzteile724.de) - [info@lfersatzteile.de](mailto:info@lfersatzteile.de)
- LF China REPUBLIC OF CHINA**  
Room 403, No.2, Huadu Mansion, Lane 422, Huanghua Rd.  
Minhang Dist. - 201103 Shanghai  
Tel. +86 (0)21 33 53 66 31 - Fax +86 (0)21 33 53 66 32  
[www.lfspareparts724.com](http://www.lfspareparts724.com) - [china@lfspareparts.com](mailto:china@lfspareparts.com)
- OOO LF RUSSIAN FEDERATION**  
Ul. Anatoliya Zhivova, 8 - office 1 - 123100 Moscow  
Tel./Fax +7 495 725 26 53  
[www.lfspareparts724.ru](http://www.lfspareparts724.ru) - [info@lfspareparts.ru](mailto:info@lfspareparts.ru)
- LF Repuestos Horeca S.L.U. SPAIN**  
Poligono Industrial Carpetania - C/Miguel Faraday, 8 - 28906 Getafe  
Tel. +34 91 477 91 00 - Fax +34 91 477 90 81  
[www.lfrepuestos-horeca724.es](http://www.lfrepuestos-horeca724.es) - [info@lfrepuestos.es](mailto:info@lfrepuestos.es)
- LF Scandinavia Aps - LF Spareparts S.p.A. DENMARK**  
Nupark, 51 - 7500 Holstebro  
Tel. +45 70 70 77 33  
[www.lfspareparts724.dk](http://www.lfspareparts724.dk) - [denmark@lfspareparts.dk](mailto:denmark@lfspareparts.dk)
- LF SpA Cesena (IT) Swiss Branch Steinhausen SWITZERLAND**  
Sennweidstrasse, 45 - CH-6312 Steinhausen  
Tel. +41 (0)41 760 15 80/1 - Fax +41 (0)41 760 15 85  
[www.lfersatzteile724.ch](http://www.lfersatzteile724.ch) - [info@lfersatzteile.ch](mailto:info@lfersatzteile.ch)
- LF Spare Parts Ltd. UNITED KINGDOM**  
A10a Lakeside Business Park, Broadway Lane  
South Cerney, Gloucestershire GL7 5XL  
Tel. +44 (0)1285 86 16 25 - Fax +44 (0)1285 86 39 49  
[www.lfspareparts724.co.uk](http://www.lfspareparts724.co.uk) - [info@lfspareparts.co.uk](mailto:info@lfspareparts.co.uk)
- LF Central Est Europe S.r.o. CZECH REPUBLIC**  
Antala Staska 1859/34  
14000 Praha 4 - KRC  
Tel. +420 730 156 910  
[www.lfspareparts724.cz](http://www.lfspareparts724.cz) - [info@lfspareparts.cz](mailto:info@lfspareparts.cz)
- LF SPARE PARTS INC. USA**  
**Legal address:**  
155 Office Plaza Dr - Suite A - Tallahassee, FL 32301  
**Business/Mailing address:**  
1100 South Tower, 225 Peachtree St., N.E. - Atlanta, GA 30303, USA  
Tel. +1-404-525-2600 - Fax +1-404-586-3528  
[www.lfspareparts724.us](http://www.lfspareparts724.us) - [info@lfspareparts.us](mailto:info@lfspareparts.us)  
Tel. West Coast and Midwest: 206-349-1525 Sauro  
Tel. East Coast and the Caribbean: 786-817-1764 Luis
- 
- AUSTRALIA AND NEW ZEALAND**  
[www.lfspareparts724.com](http://www.lfspareparts724.com)  
[andrea.calvio@lfspareparts.com](mailto:andrea.calvio@lfspareparts.com)
- AUSTRIA**  
[www.lfersatzteile724.at](http://www.lfersatzteile724.at)  
[info@lfersatzteile.at](mailto:info@lfersatzteile.at)
- BALKAN COUNTRIES**  
[www.lfspareparts724.com](http://www.lfspareparts724.com)  
[matija.ramov@lfspareparts.com](mailto:matija.ramov@lfspareparts.com)
- BALTIC COUNTRIES**  
[www.lfspareparts724.com](http://www.lfspareparts724.com)  
[inara.silina@lfspareparts.com](mailto:inara.silina@lfspareparts.com)
- LATIN AMERICA AND THE CARRIBEANS**  
[www.lfrepuestos-horeca724.es](http://www.lfrepuestos-horeca724.es)  
[export@lfrepuestos.es](mailto:export@lfrepuestos.es)
- POLAND**  
[www.lfspareparts724.pl](http://www.lfspareparts724.pl)  
[info@lfspareparts.pl](mailto:info@lfspareparts.pl)
- SOUTH KOREA**  
[www.lfspareparts724.com](http://www.lfspareparts724.com)  
[fabio.doni@lfspareparts.com](mailto:fabio.doni@lfspareparts.com)
- TURKEY**  
[www.lfyedekparca724.com](http://www.lfyedekparca724.com)  
[export@lfspareparts.com](mailto:export@lfspareparts.com)