



# Spare parts for the professional sector: Warewashing equipment



Suitable for:

# KRUPPS



This catalogue is automatically generated.  
Therefore, the sequence of the items might  
not be always shown at best.  
Updates will be issued in case of additions  
and/or amendments.  
*Suitable universal spare parts may not be included*





Suitable for:

# KRUPPS



Suitable for:

## Air traps

- 3060010 AIR CHAMBER  $\varnothing$  26x155 mm**  
 external hose  $\varnothing$  8 mm and length 1050 mm  
 for Dishwasher (KRUPPS) KORAL500 - KORAL600  
 KORAL800  
 for Dishwasher hood type (KRUPPS) KORAL1200  
 KORAL1300  
 for Glasswasher/Cupwasher (KRUPPS) KORAL205  
 KORAL206 - KORAL207 - KORAL208 - KORAL209  
 KORAL210  
 for Pan/utensilwashing machines (KRUPPS) KORAL950  
 KORAL960 - KORAL980

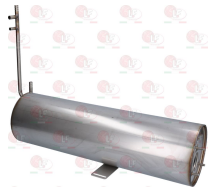


KRUPPS 3280

KRUPPS 3281

## Boilers

- 3024074 BOILER  $\varnothing$  140x475 mm**  
 flange hole  $\varnothing$  55 mm  
 for dishwashers produced until the 30/08/2012  
 for Dishwasher (KRUPPS) KORAL450DB - KORAL540DB  
 KORAL560DB - KORAL600



KRUPPS 210420  
KRUPPS 600422

KRUPPS 600420

KRUPPS 600421

- 3186001 O-RING 06150 EPDM**  
 ring thickness 5.34 mm - internal  $\varnothing$  37.47 mm



KRUPPS 103415

KRUPPS 103416

- 3450111 RUBBER PIPE  $\varnothing$  10x17 mm - 5 m**  
 operating temperature -40+100°C



KRUPPS 1380

- 3024073 BOILER KIT  $\varnothing$  100x420 mm**  
 the kit includes boiler, insul. panel, sect. pipe  
 from 3 m of rubber hose  $\varnothing$  10x17 mm and  
 OR-gasket 06150 of EPDM  
 for Glasswasher/Cupwasher (KRUPPS) KORAL SR400  
 KORAL 205 - KORAL 207 - KORAL 208 - KORAL 209



KRUPPS  
KRUPPS 205422

KRUPPS 205420  
KRUPPS 208420

KRUPPS 205421  
KRUPPS 209420

Suitable for:

**5018398 BOILER STAINLESS STEEL  $\varnothing$  140x475 mm**  
 flange hole  $\varnothing$  69 mm  
 for Dishwasher (KRUPPS) KORAL800  
 for Dishwasher hood type (KRUPPS) KORAL1200  
 KORAL1300



KRUPPS 800420

KRUPPS 800421

KRUPPS 800421+...

Suitable for:

**3186014 O-RING 06225 EPDM  $\varnothing$  67 mm**  
 ring thickness 5.34 mm - internal  $\varnothing$  56.52 mm



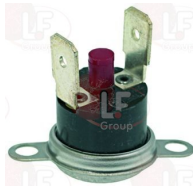
KRUPPS 103435

KRUPPS 13015

KRUPPS 1361

## Contact thermostats

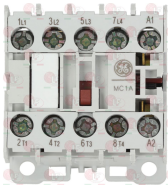
**3444607 CONTACT THERMOSTAT 110°C**  
 with manual reset  
 for Dishwasher (KRUPPS) C320 - C327 - C426 - C432  
 C453 - C537



KRUPPS 103344

## Contactors

**5048530 CONTACTOR GENERAL ELECTRIC MC1A400AT**  
 4Kw 400V - coil 230V 50/60Hz  
 4 NO contacts



KRUPPS SR4100

KRUPPS 103390

## Controllers and changeover switches

**3322964 CONTROLLER 11804F1 4 CAMS**  
 120 seconds cycle  
 230V 50/60Hz - former model 600/631/5179  
 for Dishwasher (KRUPPS) 205 - 206 - 207 - 208  
 209 - 210 - 500 - 600 - 900



KRUPPS 103500

KRUPPS 103503

**3322965 CONTROLLER 4905DV 5 CAMS**  
 1st cycle 15 seconds  
 2nd cycle 120 seconds  
 230V 50/60Hz  
 for Dishwasher (KRUPPS) 1200 - 1300



KRUPPS 103530



Suitable for:

# KRUPPS



Suitable for:

## Door gaskets for dishwashers

- 5081625 GASKET FOR DOOR LABYRINTH 20 m**  
 profile size 20x3 mm  
 for Dishwasher (KRUPPS) COMPACK-B50 - COMPACK-B53  
 COMPACK-GL450 - COMPACK-GL600 - COMPACK-S55  
 COMPACK-S65 - COMPACK-S85 - KORAL500  
 KORAL600 - KORAL800  
 for Glasswasher/Cupwasher (KRUPPS) COMPACK-B40  
 COMPACK-B43 - COMPACK-B46 - COMPACK-B48  
 COMPACK-B48LS - KORAL205 - KORAL206 - KORAL207  
 KORAL208 - KORAL209 - KORAL210  
 for Pan/utensilwashing machines (KRUPPS)  
 COMPACK-GL860 - COMPACK-GL890



KRUPPS 100545  
KRUPPS 210545

KRUPPS 100545\_10MT  
KRUPPS 500545

KRUPPS 208545  
KRUPPS 950545

## Drain assembly

- 3316001 DRAIN ASSEMBLY  $\varnothing$  1" F**  
 for Dishwasher (KRUPPS) KORAL500  
 for Glasswasher/Cupwasher (KRUPPS) KORAL205  
 KORAL206 - KORAL207 - KORAL208 - KORAL209  
 KORAL210



KRUPPS 1130

- 3316014 BRASS NUT**



KRUPPS 1132

- 3316009 FLAT GASKET 1"**



KRUPPS 1131

- 3316098 DRAIN ASSEMBLY STAINLESS STEEL  $\varnothing$  1"1/2**  
 for Dishwasher (KRUPPS) KORAL600 - KORAL800  
 for Dishwasher hood type (KRUPPS) KORAL1200  
 KORAL1300  
 for Pan/utensilwashing machines (KRUPPS) KORAL950  
 KORAL960 - KORAL980



KRUPPS 1360

KRUPPS 1360K

KRUPPS 1363

- 3316024 DRAIN ELBOW**  
 external  $\varnothing$  40 mm  
 for Dishwasher (KRUPPS) KORAL600



KRUPPS 1365



Suitable for:

**3316027 DRAIN ELBOW GASKET**  
external  $\varnothing$  44 mm  
internal  $\varnothing$  34 mm  
for Dishwasher (KRUPPS) KORAL600



KRUPPS 1366

**3186014 O-RING 06225 EPDM  $\varnothing$  67 mm**  
ring thickness 5.34 mm - internal  $\varnothing$  56.52 mm



KRUPPS 103435

KRUPPS 13015

KRUPPS 1361

## KRUPPS



Suitable for:

**3316039 DRAIN ELBOW RING NUT  $\varnothing$  1"1/2**  
for Dishwasher (KRUPPS) KORAL600  
for Dishwasher hood type (KRUPPS) KORAL1200  
KORAL1300



KRUPPS 1367

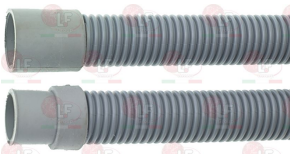
**3316046 STRAIGHT DRAIN FITTING  $\varnothing$  40 mm**  
for Dishwasher hood type (KRUPPS) KORAL1200



KRUPPS 1364

## Drain hoses

**3450028 DRAIN HOSE  $\varnothing$  29x1500 mm**  
muffs internal  $\varnothing$  24 and 28 mm  
max temperature 90°C



KRUPPS 1315

## Drain plugs

**3448218 OVERFLOW PIPE  $\varnothing$  25x110 mm**  
made of plastic  
for dishwashers until 2012  
for Dishwasher (KRUPPS) KORAL500  
for Glasswasher/Cupwasher (KRUPPS) KORAL205  
KORAL206 - KORAL207 - KORAL208 - KORAL209  
KORAL210



KRUPPS 1123





Suitable for:

# KRUPPS



Suitable for:

## Drain plugs

**5061544** OVERFLOW PIPE  $\varnothing$  30x191 mm  
for dishwashers produced starting from 2013



KRUPPS 104466

**3186231** LIP SEAL DEM40 EPDM  
 $\varnothing$  40x30x7 mm



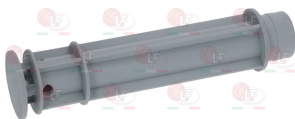
KRUPPS 104465

**3448617** OVERFLOW PIPE  $\varnothing$  40x103 mm  
made of stainless steel  
for Dishwasher (KRUPPS) KORAL800



KRUPPS 800101

**3448322** OVERFLOW PIPE DISHWASHER  $\varnothing$  30x180 mm



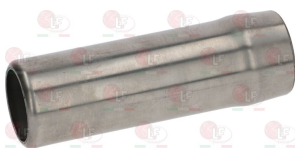
KRUPPS 104460

**3186231** LIP SEAL DEM40 EPDM  
 $\varnothing$  40x30x7 mm



KRUPPS 104465

**3448313** ST/STEEL OVERFLOW PIPE  $\varnothing$  40x125 mm  
for Dishwasher hood type (KRUPPS) KORAL1200



KRUPPS 1201091

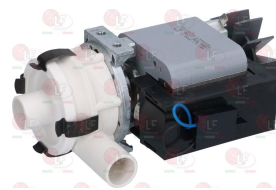
## Drain pumps

**3122199** DRAIN PUMP ASKOLL KIT 2 BRACKETS  
40W 230V 50Hz  
inlet  $\varnothing$  external 30 mm - outlet  $\varnothing$  external 22 mm  
for Dishwasher (KRUPPS) 500DB



KRUPPS 5000

**3122001** ELECTRIC PUMP GRE 1001X  
190W 230V 50Hz  
inlet external  $\varnothing$  24 mm - outlet external  $\varnothing$  24 mm

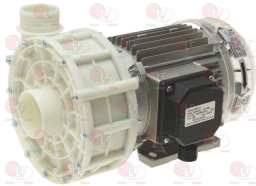


KRUPPS 5010



## Electric pumps

**3122818 ELECTRIC PUMP OP MEC80.T270SX 2.80HP**  
 inlet external  $\varnothing$  63 mm - outlet external  $\varnothing$  50 mm  
 2,01kW 220/240/380/415V 50Hz  
 for models produced until the 10/2012  
 for Dishwasher hood type (KRUPPS) KORAL1200  
 KORAL1300



KRUPPS 6600

KRUPPS 6800

**5052215 IMPELLER OP MEC80.T270SX  $\varnothing$  117 mm**



KRUPPS 6611

KRUPPS 6711

KRUPPS 6811

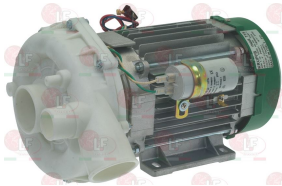
**3122024 SEAL MECHANICAL FOR SHAFT  $\varnothing$  12 mm**  
 metal seal internal  $\varnothing$  11 mm -  $\varnothing$  external 24 mm  
 height 15.5 mm  
 back. element internal  $\varnothing$  14 mm -  $\varnothing$  external 26 mm  
 height 8 mm



KRUPPS 6013

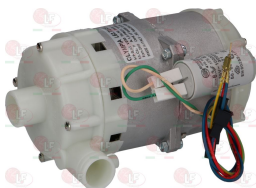
KRUPPS 6014

**3122290 ELECTRIC PUMP OP T.15 1.50HP**  
 external inlet  $\varnothing$  50 mm - external outlet  $\varnothing$  50 mm  
 supplementary external closed outlet  $\varnothing$  30 mm  
 1.10kW 230V 50Hz - Rpm 2750  
 capacitor 16uf  
 for Dishwasher (KRUPPS) KORAL800  
 for Dishwasher (KRUPPS) KORAL1100



KRUPPS 6500

**3122275 ELECTRIC PUMP OP T.25 0.25HP**  
 inlet external  $\varnothing$  28 mm - outlet external  $\varnothing$  28 mm  
 0.25HP 230V 50Hz - Rpm 2750  
 capacitor 6.3 $\mu$ f  
 for Glasswasher/Cupwasher (KRUPPS) KORAL205  
 KORAL207 - KORAL208



KRUPPS 6000

**1186237 O-RING 03300 EPDM**  
 ring thickness 2.62 mm - internal  $\varnothing$  75.87 mm



KRUPPS 6012



Suitable for:

# KRUPPS



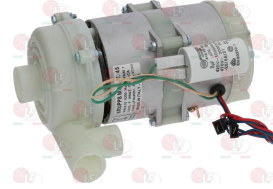
**3122284 ELECTRIC PUMP OP T.41 0.40HP**  
 inlet external  $\varnothing$  29 mm - outlet external  $\varnothing$  28 mm  
 0.29kW 230V 50Hz 1.8A - Rpm 2700  
 capacitor 8  $\mu$ F - flow rate 165 L/min



KRUPPS

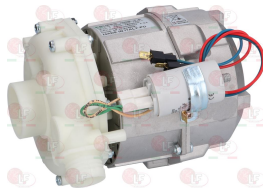
Suitable for:

**3122285 ELECTRIC PUMP OP T.45 0.45HP**  
 inlet external  $\varnothing$  33 mm - outlet external  $\varnothing$  30 mm  
 additional outlet external  $\varnothing$  28 mm  
 0.33kW 230V 50Hz - Rpm 2750  
 capacitor 8  $\mu$ F  
 for Glasswasher/Cupwasher (KRUPPS) KORAL210



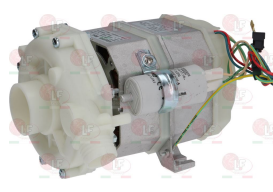
KRUPPS 6100

**3122289 ELECTRIC PUMP OP T.5 0.50HP**  
 inlet external  $\varnothing$  50 mm - outlet external  $\varnothing$  30 mm  
 hose end fitting closed external  $\varnothing$  12 mm  
 0.50HP 230V 50Hz - Rpm 2750  
 capacitor 10 $\mu$ f



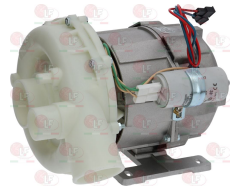
KRUPPS 6300

**3122819 ELECTRIC PUMP OP T.7 0.70HP**  
 inlet external  $\varnothing$  50 mm - outlet external  $\varnothing$  30 mm  
 0.70HP 230V 50Hz - Rpm 2750  
 capacitor 10  $\mu$ f  
 for Dishwasher (KRUPPS) KORAL500  
 for Glasswasher/Cupwasher (KRUPPS) KORAL210



KRUPPS 6200

**3122277 ELECTRIC PUMP OP T.75 0.75HP**  
 external inlet  $\varnothing$  50 mm - external outlet  $\varnothing$  50 mm  
 open supplementary outlet external  $\varnothing$  30 mm  
 open hose end fitting external  $\varnothing$  10 mm  
 0,75HP 230V 50Hz - rpm 2700  
 capacitor 12.5  $\mu$ f



KRUPPS 6400





## Electronic boards

### 5075026 CONTROL BOARD WITH DISPLAY

dimensions 170x50 mm  
complete with gasket  
for Dishwasher (KRUPPS) EC560E - EL50E - FLK506E  
K540E - K580E  
for Dishwasher hood type (KRUPPS) EC1100E  
EC1200E - EL60E - EL70E - K1100E - K1200E  
S1200E - S540E  
for Glasswasher/Cupwasher (KRUPPS) EC205E - EC450E  
EL40E - FLE209E - FLK208E - K207E - K208E  
K209E - S205E  
for Dishwasher (KRUPPS) EL42E



KRUPPS 103779

KRUPPS 103780

KRUPPS 103781

### 5075177 POWER BOARD

board dimensions 160x102 mm  
for Dishwasher (KRUPPS) EL42E



KRUPPS 103700

## Filters

### 3160031 FILTER STAINLESS FOR GLASSWASHER



KRUPPS 3240

## Heating elements

### 3355467 HEATING ELEMENT FOR BOILER 2400W 230V

immersed length 270 mm  
external  $\varnothing$  flange 55 mm - distance between holes 6  
with probe receptacle  $\varnothing$  4 mm  
complete with O-ring  $\varnothing$  48 mm (3186001)



KRUPPS 103410

### 3186001 O-RING 06150 EPDM

ring thickness 5.34 mm - internal  $\varnothing$  37.47 mm



KRUPPS 103415

KRUPPS 103416

### 3355412 HEATING ELEMENT FOR BOILER 4500W 230/415

immersed length 370 mm  
external flange  $\varnothing$  72 mm  
with probe receptacle  $\varnothing$  8 mm  
complete with gasket  $\varnothing$  67 mm (3186014)  
nut (3528232) and washer (3528238) on request



KRUPPS 103430

### 3186014 O-RING 06225 EPDM $\varnothing$ 67 mm

ring thickness 5.34 mm - internal  $\varnothing$  56.52 mm



KRUPPS 103435

KRUPPS 13015

KRUPPS 1361



Suitable for:

**335566 HEATING ELEMENT FOR TANK 2500W 240V**  
immersed length 310 mm  
width 35 mm - external  $\varnothing$  flange 55 mm  
complete with O-ring  $\varnothing$  48 mm (3186001)



KRUPPS 103450

Suitable for:

**335583 HEATING ELEMENT FOR TANK 2600W 240V**  
immersed length 350 mm  
width 40 mm - flange 61x26 mm  
for Dishwasher (KRUPPS) K540E



KRUPPS 103407

KRUPPS 103408

**335581 HEATING ELEMENT 2000W 240V**  
immersed length 290 mm  
width 42 mm - flange 61x26 mm  
for Dishwasher (KRUPPS) 500DB



KRUPPS 103400

**503493 RESISTENZA BOILER 2500W 240V**  
profondità immersione 300 mm  
flangia  $\varnothing$  esterno 55 mm - interasse fori 60 mm



KRUPPS 103420

KRUPPS 103425

**3186001 O-RING 06150 EPDM**  
ring thickness 5.34 mm - internal  $\varnothing$  37.47 mm



KRUPPS 103415

KRUPPS 103416

## Hinges, catches and accessories

**3053098 DOOR HINGE RH-LH KIT**  
for Dishwasher (KRUPPS) - Series KORAL  
for Glasswasher/Cupwasher (KRUPPS) - Series KORAL



KRUPPS 4000+4001+4100

KRUPPS 4005



## Hose-end fittings

- 3743776 HOSE END FITTING  $\varnothing$  32 mm 3/4" F**  
 for Dishwasher (KRUPPS) KORAL500  
 for Glasswasher/Cupwasher (KRUPPS) KORAL205  
 KORAL206 - KORAL207 - KORAL208 - KORAL208LS  
 KORAL209 - KORAL210  
 for Pan/utensilwashing machines (KRUPPS) KORAL950  
 KORAL960 - KORAL980 - KORAL990



KRUPPS 104200

## Hydraulic piping

- 3090759 PVC PIPE  $\varnothing$  4/6 mm - 10 m**  
 alimentary



KRUPPS 1410

- 3090259 PVC PIPE  $\varnothing$  4/6 mm - 100 m**  
 alimentary



KRUPPS 1410

- 3450211 RUBBER PIPE  $\varnothing$  10x17 mm - 40 m**  
 operating temperature -40+100°C



KRUPPS 1380

## Indicator lights

- 3221110 INDICATOR LIGHT GREEN 230V**  
 $\varnothing$  head 7 mm -  $\varnothing$  hole 6 mm - 120°C  
 wire connection length 210 mm



KRUPPS 103360

- 3221109 INDICATOR LIGHT ORANGE 230V**  
 $\varnothing$  head 7 mm -  $\varnothing$  hole 6 mm - 120°C  
 pvc cable length 210 mm



KRUPPS 103360



Suitable for:

# KRUPPS



Suitable for:

## Inlet hoses

**3449001 INLET ELBOW HOSE  $\varnothing$  3/4" FF 1500 mm**  
thermoplastic hose  $\varnothing$  10x16 mm  
nylon fittings  $\varnothing$  3/4" with gaskets  
max temperature 90°C  
max pressure 10 bar



KRUPPS 1300

## Ironmongery (screws,nuts,washers)

**3528239 HEXAGON HEAD SCREW M5x20**  
stainless steel - UNI 5739 - DIN 933 - ISO 4017



KRUPPS 200

**3528240 HEXAGON HEAD SCREW M8x50**  
stainless steel - UNI 5739 - DIN 933 - ISO 4017



KRUPPS 251

**1186399 WASHER FLAT M16**  
internal/external  $\varnothing$  17/30 mm - thickness 3 mm  
in zinc plated iron alloy  
UNI 6592 - DIN 125 A - ISO 7089



KRUPPS 104228

## Knobs

**3241658 SELECTOR SWITCH KNOB**  
hole for square pin 5x5 mm



KRUPPS 103600



## Magnets

- 3240884 RECTANGULAR MAGNET 63x19x7 mm**  
 for Dishwasher (KRUPPS) KORAL500 - KORAL600  
 KORAL800  
 for Glasswasher/Cupwasher (KRUPPS) KORAL205  
 KORAL206 - KORAL207 - KORAL208 - KORAL209  
 KORAL210



KRUPPS 1225

## Microswitches, mechanical

- 3240975 MICROSWITCH WITH MAGNET**  
 contact capacity 10A 250V  
 for Dishwasher (KRUPPS)



KRUPPS 103540

KRUPPS 103540K

## Position switches

- 3240973 LIMIT MICROSWITCH PIZZATO FM515**  
 3A 400V



KRUPPS 103550

## Pressure switches

- 3320039 PRESSURE SWITCH 1 LEVEL**  
 calibration 28/12 mm  
 250V 16(4)A



KRUPPS 103383

- 3320111 PRESSURE SWITCH 1 LEVEL**  
 calibration 35/17 mm  
 250V 16(4)A



KRUPPS 103380





Suitable for:

# KRUPPS



Suitable for:

## Rinse aid pumps and accessories

**3090353 BULKHEAD FITTING (3 PIECES)**  
for tank inlet  
for detergent injection



KRUPPS 1211

**3090149 DETERGENT DISP. PERISTALTIC PUMP NBR-3**  
230V 50/60Hz 8W  
flow rate 3 L/h 0.1 bar  
santoprene hose  
time-break adjustment  
protection IP 56  
feeder 1.5 m  
for Glasswasher/Cupwasher (KRUPPS) KORAL205  
KORAL206 - KORAL207 - KORAL208 - KORAL209  
KORAL210



KRUPPS 1210

KRUPPS 1210K

**5069409 DOUBLE DISPENSER DETERGENT/RINSE AID**  
model PR2 - 230V 50/60Hz 8W  
detergent flow rate 2.7 Lt/h 0,1 bar  
rinse aid flow rate 0.3 Lt/h 3 bar



KRUPPS 1275K

KRUPPS 1275K+502(X4)

KRUPPS 1275K+507(X3)

**5070919 PIPE SEKOBRILL  $\varnothing$  3x8 mm**  
with non-return valve hose-end  $\varnothing$  8 mm  
hose-end fitting 90° black  $\varnothing$  5 mm  
overall length 170 mm  
for rinse aid  
for doser PR-2



KRUPPS 1216

KRUPPS 1216K

**5059261 SANTOPRENE TUBE  $\varnothing$  6x10 mm**  
hose end fittings 90° black  $\varnothing$  5 mm  
overall length 180 mm  
for detergent



KRUPPS 1212

KRUPPS 1217

KRUPPS 1217K

**3090016 HYDRAULIC DISPENSER TYPE 3000**  
for rinse aid - flow rate max 3.6 cc  
with inspectionable filter - silicone valves  
neoprene/nylon diaphragm

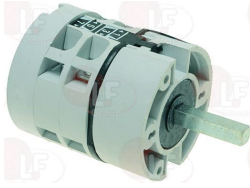


KRUPPS 1200



## Selector switches

**3059086** **SELECTOR SWITCH 3 POSITIONS**  
square pin 5x5 mm



KRUPPS 103590

## Solenoid valves

**3120620** **SOLENOID VALVE ROBERTSHAW 1 WAY 180°**  
230V 50/60Hz - max. temperature 90°C  
inlet 3/4" - outlet  $\varnothing$  10.5 mm  
operating pressure from 0.2 to 10 bar



KRUPPS 103370

## Springs

**3250241** **HANDLE LOCK**  
for DISHWASHER KORAL 1100/1650



KRUPPS 1203020

## Supports for wash and rinse arms

**3743071** **CENTRAL CONDUIT**  
for Dishwasher hood type (KRUPPS) KORAL1200



KRUPPS 104140

KRUPPS 104140+104141

KRUPPS 1250140



Suitable for:

# KRUPPS



Suitable for:

## Switches

**3319114 DOUBLE SWITCH ON/OFF BOILER**



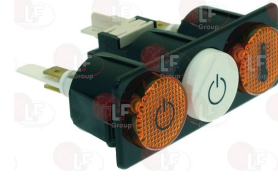
KRUPPS 103300

KRUPPS 103315

KRUPPS 103317

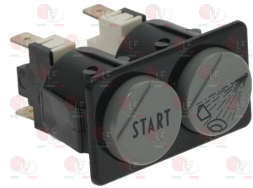
**3319126 ON-OFF PUSH-BUTTON PANEL**

for Dishwasher hood type (KRUPPS) KORAL1200



KRUPPS 103330

**3319113 RINSING START PUSH-BUTTON PANEL**

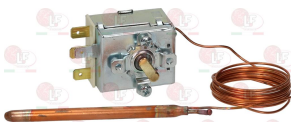


KRUPPS 103320

## Thermostats

**3444004 THERMOSTAT SINGLE-PHASE TR2 0-90°C**

D-shaped pin  $\varnothing 6 \times 4.6$  mm  
capillary length 1500 mm - 15A 250V  
bulb  $\varnothing 6.5 \times 9.5$  mm



KRUPPS 103340

**5055067 THERMOSTAT TR2 9345 0-90°C**

bulb  $\varnothing 6.5 \times 110$  mm - capillary covered 3000 mm  
for Dishwasher (KRUPPS) COMPACK-GL450  
COMPACK-GL600 - KORAL450DB - KORAL540DB  
KORAL560DB - KORAL630DB - KORAL840DB  
KORAL950DB - KORAL960DB  
for Dishwasher hood type (KRUPPS) ELITECH-EL60  
ELITECH-EL62 - ELITECH-EL70 - ELITECH-EL80  
KORAL1100DB - KORAL1200DB - KORAL1250DB  
KORAL1350DB - KORAL1400DB - KORAL1450DB  
KORAL1500DB - KORAL1550DB - KORAL1600DB  
KORAL1650DB  
for Glasswasher/Cupwasher (KRUPPS) KORAL205DB  
KORAL206DB - KORAL207DB - KORAL208DB  
KORAL208LSDB - KORAL209DB  
for Pan/utensilwashing machines (KRUPPS)

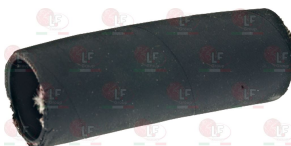


KRUPPS 103345

## Tubing and hoses

**3248128 INLET HOSE**

internal  $\varnothing 35$  - external  $\varnothing 42$  mm  
length 120 mm



KRUPPS 103543

KRUPPS 600705

**3248610 INLET HOSE**

internal  $\varnothing 36$  mm  
external  $\varnothing 45$  mm  
length 62 mm  
for Glasswasher/Cupwasher (KRUPPS) KORAL209



KRUPPS 209700



Suitable for:

**3248612 INLET HOSE**  
internal  $\varnothing$  35  
external  $\varnothing$  42 mm  
for Glasswasher/Cupwasher (KRUPPS) KORAL207



KRUPPS 207700

Suitable for:

**3248613 INLET HOSE**  
external  $\varnothing$  39 and 36 mm  
internal  $\varnothing$  32 and 28 mm  
length 83 mm  
for Glasswasher/Cupwasher (KRUPPS) KORAL205



KRUPPS 205700

**3248039 PUMP OUTLET HOSE**  
internal  $\varnothing$  27 mm  
for Glasswasher/Cupwasher (KRUPPS) KORAL208



KRUPPS 208705

**3248615 INLET HOSE**  
internal  $\varnothing$  35 mm  
external  $\varnothing$  43 mm  
length 50 mm  
for Glasswasher/Cupwasher (KRUPPS) KORAL208



KRUPPS 208700

**3248035 PUMP OUTLET HOSE 100 mm**  
internal  $\varnothing$  50 mm  
external  $\varnothing$  60 mm



KRUPPS 600700

## Wash and rinse arms for warewashers

**3243539 COMPLETE RINSE ARM ASSEMBLY 390 mm**  
for Glasswasher/Cupwasher (KRUPPS) KORAL208



KRUPPS 208800

KRUPPS 208800K

**3243547 ARM ASSEMBLY FASTENING SCREW  $\varnothing$  7 mm**



KRUPPS 104040

**3243650 RINSE ARM END CAP**  
for Dishwasher (KRUPPS)



KRUPPS 104010

**3501633 RINSE NOZZLE**  
thread  $\varnothing$  6 mm



KRUPPS 104000



Suitable for:

**3243921 WASH ARM ASSEMBLY BUSHING**

internal  $\varnothing$  10 mm  
external  $\varnothing$  18 mm  
height 9 mm  
for Dishwasher (KRUPPS)



KRUPPS 104100

# KRUPPS



Suitable for:

**3243538 COMPLETE RINSE ARM ASSEMBLY 330 mm**  
for Glasswasher/Cupwasher (KRUPPS) KORAL205  
KORAL207



KRUPPS 207800

KRUPPS 207800K

**3243650 RINSE ARM END CAP**  
for Dishwasher (KRUPPS)



KRUPPS 104010

**3243921 WASH ARM ASSEMBLY BUSHING**

internal  $\varnothing$  10 mm  
external  $\varnothing$  18 mm  
height 9 mm  
for Dishwasher (KRUPPS)



KRUPPS 104100

**3243547 ARM ASSEMBLY FASTENING SCREW  $\varnothing$  7 mm**



KRUPPS 104040

**3501633 RINSE NOZZLE**  
thread  $\varnothing$  6 mm



KRUPPS 104000



Suitable for:

**5055006 NUT KNURLED STAINLESS STEEL M15x1**  
 for Dishwasher (KRUPPS) COMPACK-GL600  
 COMPACK-S85 - ELITECH-EL53 - ELITECH-EL95  
 ELITECH-EL96 - ELITECH-EL98 - KORAL630DB  
 KORAL840DB - KORAL950DB - KORAL960DB  
 for Dishwasher hood type (KRUPPS) COMPACK-S140  
 COMPACK-S150 - COMPACK-S155 - COMPACK-S160  
 COMPACK-S165 - ELITECH-EL60 - ELITECH-EL62  
 ELITECH-EL70 - ELITECH-EL80 - KORAL1200DB  
 KORAL1250DB - KORAL1350DB - KORAL1400DB  
 KORAL1450DB - KORAL1500DB - KORAL1550DB  
 KORAL1600DB - KORAL1650DB  
 for Pan/utensilwashing machines (KRUPPS)  
 COMPACK-GL860 - COMPACK-GL890 - KORAL980DB  
 KORAL990DB



KRUPPS 104050

Suitable for:

**3743777 PIPE LOCKING NUT  $\varnothing$  18x1 mm**  
 for Dishwasher (KRUPPS) KORAL800  
 for Dishwasher hood type (KRUPPS) KORAL1200  
 KORAL1300



KRUPPS 104080

**3243748 RINSE ARM ASSEMBLY 480 mm**  
 for Dishwasher (KRUPPS) KORAL580 - KORAL800  
 for Dishwasher hood type (KRUPPS) KORAL1200  
 KORAL1300



KRUPPS 800800

KRUPPS 800800K

**3243650 RINSE ARM END CAP**  
 for Dishwasher (KRUPPS)



KRUPPS 104010

**3243921 WASH ARM ASSEMBLY BUSHING**  
 internal  $\varnothing$  10 mm  
 external  $\varnothing$  18 mm  
 height 9 mm  
 for Dishwasher (KRUPPS)



KRUPPS 104100

**3243547 ARM ASSEMBLY FASTENING SCREW  $\varnothing$  7 mm**



KRUPPS 104040

**3501633 RINSE NOZZLE**  
 thread  $\varnothing$  6 mm



KRUPPS 104000



Suitable for:

# KRUPPS



**3243730 WASH ARM ASSEMBLY**  
 for Dishwasher (KRUPPS) KORAL560 - KORAL580  
 KORAL800  
 for Dishwasher hood type (KRUPPS) KORAL1200  
 KORAL1300



KRUPPS 104110  
 KRUPPS 800850K  
 KRUPPS 800855

KRUPPS 104150  
 KRUPPS 800851  
 KRUPPS 800855K

KRUPPS 800850  
 KRUPPS 800851K

Suitable for:

**3243745 LARGE BUSHING**  
 external  $\varnothing$  20 mm  
 internal  $\varnothing$  16 mm  
 height 15 mm



KRUPPS 104110

**3243649 WASH ARM END CAP**  
 for Dishwasher (KRUPPS)



KRUPPS 104030

KRUPPS 104030+104031

**3243545 WASH-RINSE ARM ASSEMBLY 330 mm**  
 for Glasswasher/Cupwasher (KRUPPS) KORAL205  
 KORAL207



KRUPPS 207070

KRUPPS 207850

KRUPPS 207851K

**3243547 ARM ASSEMBLY FASTENING SCREW  $\varnothing$  7 mm**



KRUPPS 104040

**3243570 LOWER CENTRAL LINE**



KRUPPS 104120  
 KRUPPS 104133

KRUPPS 104125  
 KRUPPS 104170

KRUPPS 104125K

**3243650 RINSE ARM END CAP**  
 for Dishwasher (KRUPPS)



KRUPPS 104010

**3501633 RINSE NOZZLE**  
 thread  $\varnothing$  6 mm



KRUPPS 104000

**3243921 WASH ARM ASSEMBLY BUSHING**  
 internal  $\varnothing$  10 mm  
 external  $\varnothing$  18 mm  
 height 9 mm  
 for Dishwasher (KRUPPS)



KRUPPS 104100

Suitable for:

Suitable for:

**3243546 WASH-RINSE ARM ASSEMBLY 390 mm**  
 for Dishwasher (KRUPPS) KORAL560 - KORAL580  
 for Glasswasher/Cupwasher (KRUPPS) KORAL208  
 KORAL209  
 for Dishwasher (KRUPPS) C426

**3243547 ARM ASSEMBLY FASTENING SCREW  $\varnothing$  7 mm**



KRUPPS 208070  
 KRUPPS 208851K

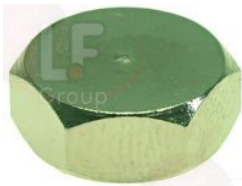
KRUPPS 208850

KRUPPS 208851

KRUPPS 104040

**3243650 RINSE ARM END CAP**  
 for Dishwasher (KRUPPS)

**3501633 RINSE NOZZLE**  
 thread  $\varnothing$  6 mm



KRUPPS 104010

KRUPPS 104000

**3243921 WASH ARM ASSEMBLY BUSHING**  
 internal  $\varnothing$  10 mm  
 external  $\varnothing$  18 mm  
 height 9 mm  
 for Dishwasher (KRUPPS)



KRUPPS 104100

**3243729 WASH-RINSE ARM ASSEMBLY 500 mm**  
 for Dishwasher (KRUPPS) KORAL540 - KORAL600  
 KORAL800

**3243547 ARM ASSEMBLY FASTENING SCREW  $\varnothing$  7 mm**



KRUPPS 104130  
 KRUPPS 600851K

KRUPPS 600850

KRUPPS 600850K

KRUPPS 104040

**3243650 RINSE ARM END CAP**  
 for Dishwasher (KRUPPS)

**3501633 RINSE NOZZLE**  
 thread  $\varnothing$  6 mm



KRUPPS 104010

KRUPPS 104000



Suitable for:

**3743779 UPPER FIXED UNIT**

for Dishwasher (KRUPPS) KORAL500 - KORAL600  
KORAL800  
for Glasswasher/Cupwasher (KRUPPS) KORAL206  
KORAL208 - KORAL210



KRUPPS 104060  
KRUPPS 104405

KRUPPS 104260  
KRUPPS 104411

KRUPPS 104403

# KRUPPS



Suitable for:

**3243921 WASH ARM ASSEMBLY BUSHING**

internal  $\varnothing$  10 mm  
external  $\varnothing$  18 mm  
height 9 mm  
for Dishwasher (KRUPPS)



KRUPPS 104100

**3743881 WASH/RINSE ARM ASSEMBLY 450 mm**

for Dishwasher (KRUPPS) KORAL500 - X45E  
for Glasswasher/Cupwasher (KRUPPS) KORAL210



KRUPPS 210850  
KRUPPS 450851K

KRUPPS 210850K  
KRUPPS 500850

KRUPPS 450851

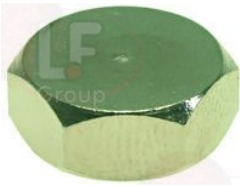
**3243547 ARM ASSEMBLY FASTENING SCREW  $\varnothing$  7 mm**



KRUPPS 104040

**3243650 RINSE ARM END CAP**

for Dishwasher (KRUPPS)



KRUPPS 104010

**3501633 RINSE NOZZLE**  
thread  $\varnothing$  6 mm



KRUPPS 104000

**3743779 UPPER FIXED UNIT**

for Dishwasher (KRUPPS) KORAL500 - KORAL600  
KORAL800  
for Glasswasher/Cupwasher (KRUPPS) KORAL206  
KORAL208 - KORAL210



KRUPPS 104060  
KRUPPS 104405

KRUPPS 104260  
KRUPPS 104411

KRUPPS 104403

**3243921 WASH ARM ASSEMBLY BUSHING**

internal  $\varnothing$  10 mm  
external  $\varnothing$  18 mm  
height 9 mm  
for Dishwasher (KRUPPS)



KRUPPS 104100



## Wash jets and accessories

**3743507 LH WASH JET**



KRUPPS 104020SX

KRUPPS 104021SX

**3243550 RH WASH JET**

hole  $\varnothing$  12 mm  
for all models  
for Dishwasher (KRUPPS)



KRUPPS 104020

KRUPPS 104021

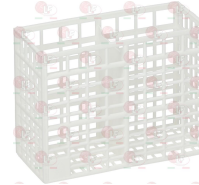
## Washing baskets and accessories

**3055053 CUTLERY INSERT RACK 113x113x130 mm**  
plastic



KRUPPS 1155

**3055078 CUTLERY INSERT RACK 130x55x100 mm**  
with 2 compartments in mopen



KRUPPS 1150

**3055491 CUTLERY RACK 450x230x130 mm**  
of plastic



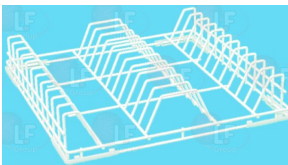
KRUPPS 1154

**3055452 CUTLERY RACK 500x500x106 mm**  
in plastic



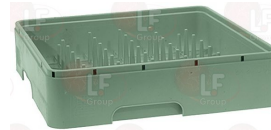
KRUPPS 800201

**3055011 DISH RACK 500x500x100 mm**  
for 22 dishes  
made of plastic covered wire



KRUPPS 800053

**3055472 DISHES BASKET 450x450x105 mm**



KRUPPS 210055

**3055229 GLASS RACK  $\varnothing$  350x140 mm**  
in plastic covered wire  
 $\varnothing$  350 mm  
height 140 mm  
bottom ring  $\varnothing$  280 mm



KRUPPS 207030

**3055482 GLASS RACK  $\varnothing$  355x160 mm**  
bottom ring  $\varnothing$  280 mm



KRUPPS 207035



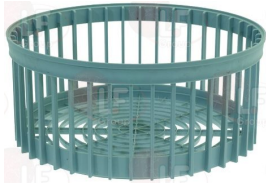


Suitable for:

# KRUPPS



**3055221 GLASS RACK  $\varnothing$  380x170 mm**  
made of plastic  
upper  $\varnothing$  380 mm  
lower  $\varnothing$  320 mm

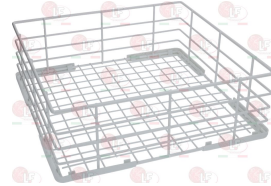


KRUPPS 208030

KRUPPS 208035

Suitable for:

**3055230 GLASS RACK 350x350x115 mm**  
in plastic covered wire



KRUPPS 207050

**3055238 GLASS RACK 400x400x135 mm**  
in plastic covered wire



KRUPPS 208050

**3055476 GLASS RACK 400x400x150 mm**  
of plastic



KRUPPS 208054

**3055485 GLASS RACK 450x450x100 mm**



KRUPPS 210054

**3055369 GLASS RACK 450x450x140 mm**  
in plastic covered wire



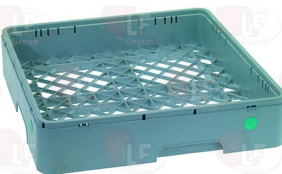
KRUPPS 210050

**3055738 GLASS RACK 450x450x170 mm**  
4 inclined lines  
for glasses max  $\varnothing$  110 mm



KRUPPS 210052

**3055454 GLASS RACK 500x500x106 mm**



KRUPPS 800202

**3055455 BASKET RISE 500x500x50 mm**



KRUPPS 800RIA0

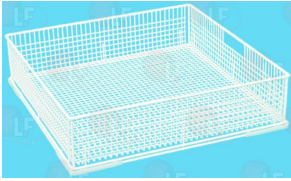


# KRUPPS



Suitable for:

**3055010 GLASS RACK 500x500x120 mm**  
in plastic covered wire



KRUPPS 800050

Suitable for:

**3055739 GLASS RACK 500x500x170 mm**  
plastic covered iron  
4 inclined lines  
for glasses max  $\varnothing$  110 mm



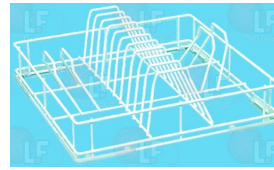
KRUPPS 800052

**3055694 PLATE RACK 400x400x110**  
capacity : 9 plates



KRUPPS 208055

**3055239 PLATE RACK 400x400x80 mm**  
for 12 PLATES  
in plastic covered wire



KRUPPS 208053

**3055237 PLATE RACK 450x450x100 mm**  
for 14 plates  
in plastic covered wire



KRUPPS 210053

**3055451 PLATE RACK 500x500x106 mm**  
in plastic



KRUPPS 800211

**3055490 SAUCER RACK 290x90x75 mm**  
made of plastic - for 12 saucers



KRUPPS 1153

**3055453 TRAYS BASKET 500x500x106 mm**



KRUPPS 800200

The data herewith contained may change without notice and LF SpA cannot be held responsible for possible errors stated or resulting by the use of this document. All rights reserved. No part of this publication may be reproduced without written permission by LF SpA.



## Distributing Components, Spare Parts & Accessories in original quality worldwide

- 
- LF SpA HEADQUARTERS**  
via Voltri, 80 - 47522 Cesena (FC) ITALY  
Tel. +39 0547 34 11 11 - Fax +39 0547 34 11 10  
[www.lfircambi724.it](http://www.lfircambi724.it) - [info@lfircambi.it](mailto:info@lfircambi.it)  
Export Dept. Tel. +39 0547 34 11 50 - Fax +39 0547 34 11 55  
[www.lfspareparts724.com](http://www.lfspareparts724.com) - [export@lfspareparts.com](mailto:export@lfspareparts.com)
- LF SpA HOUSEHOLD COMPONENTS DIVISION**  
Via Padriciano, 99 - AREA Science Park - 34149 Trieste (TS) ITALY  
Tel. +39 0547 34 12 42 - Fax +39 0547 34 12 48  
[www.lfspareparts724.com](http://www.lfspareparts724.com) - [info@lfspareparts.com](mailto:info@lfspareparts.com)
- EPGC Sas FRANCE**  
13, Rue des Forts - 59960 Neuville en Ferrain  
Tel. +33 (0)3 20 25 06 21 - Fax +33 (0)3 20 25 34 12  
[www.epgc.com](http://www.epgc.com) - [epgc@epgc.com](mailto:epgc@epgc.com)
- LF GmbH GERMANY**  
Junkersstrasse, 3 - D-82178 Puchheim - München  
Tel. +49 89 89 45 78 66 - Fax +49 89 89 45 78 88  
[www.lfersatzteile724.de](http://www.lfersatzteile724.de) - [info@lfersatzteile.de](mailto:info@lfersatzteile.de)
- LF China REPUBLIC OF CHINA**  
Room 403, No.2, Huadu Mansion, Lane 422, Huanghua Rd.  
Minhang Dist. - 201103 Shanghai  
Tel. +86 (0)21 33 53 66 31 - Fax +86 (0)21 33 53 66 32  
[www.lfspareparts724.com](http://www.lfspareparts724.com) - [china@lfspareparts.com](mailto:china@lfspareparts.com)
- OOO LF RUSSIAN FEDERATION**  
Ul. Anatoliya Zhivova, 8 - office 1 - 123100 Moscow  
Tel./Fax +7 495 725 26 53  
[www.lfspareparts724.ru](http://www.lfspareparts724.ru) - [info@lfspareparts.ru](mailto:info@lfspareparts.ru)
- LF Repuestos Horeca S.L.U. SPAIN**  
Poligono Industrial Carpetania - C/Miguel Faraday, 8 - 28906 Getafe  
Tel. +34 91 477 91 00 - Fax +34 91 477 90 81  
[www.lfrepuestos-horeca724.es](http://www.lfrepuestos-horeca724.es) - [info@lfrepuestos.es](mailto:info@lfrepuestos.es)
- LF Scandinavia Aps - LF Spareparts S.p.A. DENMARK**  
Nupark, 51 - 7500 Holstebro  
Tel. +45 70 70 77 33  
[www.lfspareparts724.dk](http://www.lfspareparts724.dk) - [denmark@lfspareparts.dk](mailto:denmark@lfspareparts.dk)
- LF SpA Cesena (IT) Swiss Branch Steinhausen SWITZERLAND**  
Sennweidstrasse, 45 - CH-6312 Steinhausen  
Tel. +41 (0)41 760 15 80/1 - Fax +41 (0)41 760 15 85  
[www.lfersatzteile724.ch](http://www.lfersatzteile724.ch) - [info@lfersatzteile.ch](mailto:info@lfersatzteile.ch)
- LF Spare Parts Ltd. UNITED KINGDOM**  
A10a Lakeside Business Park, Broadway Lane  
South Cerney, Gloucestershire GL7 5XL  
Tel. +44 (0)1285 86 16 25 - Fax +44 (0)1285 86 39 49  
[www.lfspareparts724.co.uk](http://www.lfspareparts724.co.uk) - [info@lfspareparts.co.uk](mailto:info@lfspareparts.co.uk)
- LF Central Est Europe S.r.o. CZECH REPUBLIC**  
Antala Staska 1859/34  
14000 Praha 4 - KRC  
Tel. +420 730 156 910  
[www.lfspareparts724.cz](http://www.lfspareparts724.cz) - [info@lfspareparts.cz](mailto:info@lfspareparts.cz)
- LF SPARE PARTS INC. USA**  
Legal address:  
155 Office Plaza Dr - Suite A - Tallahassee, FL 32301  
Business/Mailing address:  
1100 South Tower, 225 Peachtree St., N.E. - Atlanta, GA 30303, USA  
Tel. +1-404-525-2600 - Fax +1-404-586-3528  
[www.lfspareparts724.us](http://www.lfspareparts724.us) - [info@lfspareparts.us](mailto:info@lfspareparts.us)  
Tel. West Coast and Midwest: 206-349-1525 Sauro  
Tel. East Coast and the Caribbean: 786-817-1764 Luis
- 
- AUSTRALIA AND NEW ZEALAND**  
[www.lfspareparts724.com](http://www.lfspareparts724.com)  
[andrea.calvio@lfspareparts.com](mailto:andrea.calvio@lfspareparts.com)
- AUSTRIA**  
[www.lfersatzteile724.at](http://www.lfersatzteile724.at)  
[info@lfersatzteile.at](mailto:info@lfersatzteile.at)
- BALKAN COUNTRIES**  
[www.lfspareparts724.com](http://www.lfspareparts724.com)  
[matija.ramov@lfspareparts.com](mailto:matija.ramov@lfspareparts.com)
- BALTIC COUNTRIES**  
[www.lfspareparts724.com](http://www.lfspareparts724.com)  
[inara.silina@lfspareparts.com](mailto:inara.silina@lfspareparts.com)
- LATIN AMERICA AND THE CARRIBEANS**  
[www.lfrepuestos-horeca724.es](http://www.lfrepuestos-horeca724.es)  
[export@lfrepuestos.es](mailto:export@lfrepuestos.es)
- POLAND**  
[www.lfspareparts724.pl](http://www.lfspareparts724.pl)  
[info@lfspareparts.pl](mailto:info@lfspareparts.pl)
- SOUTH KOREA**  
[www.lfspareparts724.com](http://www.lfspareparts724.com)  
[fabio.doni@lfspareparts.com](mailto:fabio.doni@lfspareparts.com)
- TURKEY**  
[www.lfyedekparca724.com](http://www.lfyedekparca724.com)  
[export@lfspareparts.com](mailto:export@lfspareparts.com)