



# Spare parts for the professional sector: Warewashing equipment



Suitable for:

# HILTA



This catalogue is automatically generated.  
Therefore, the sequence of the items might  
not be always shown at best.  
Updates will be issued in case of additions  
and/or amendments.  
*Suitable universal spare parts may not be included*





Suitable for:

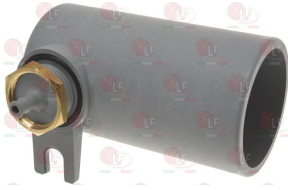
# HILTA



Suitable for:

## Air traps

**3060118 AIR CHAMBER  $\varnothing$  60x110 mm**



HILTA GAAR60

HILTA W14-W15

**3060071 AIR CHAMBER COMPLETE 83x50x33 mm**

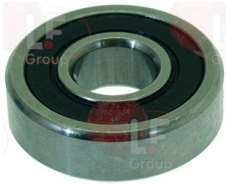


HILTA 09GAARIA

## Bearings

**3063102 BEARING 609 DDU NSK**

external  $\varnothing$  24 mm - internal  $\varnothing$  9 mm - thickness 7mm  
for Dishwasher (HILTA) S41 - S42  
for Dishwasher hood type (HILTA) W13 - W14 - W15  
for Glasswasher/Cupwasher (HILTA) RB10 - RB22  
SB10 - SB22



HILTA

## Boilers

**3024023 BOILER  $\varnothing$  140x350 mm**  
for Glasswasher/Cupwasher (HILTA) RB10 - SB10



HILTA 09BOMO10

**3024080 BOILER  $\varnothing$  140x425 mm**  
for Dishwasher (HILTA) S/41 - S/42MA - S/42TA  
S/49TA



HILTA 09BOMO42

**3024077 BOILER  $\varnothing$  150x425 mm**  
for Dishwasher (HILTA) S/41 - S/42MA - S/42TA  
S/49TA



HILTA 09BOTR42

**3024078 BOILER  $\varnothing$  160x440 mm**  
for models produced from 01/2005  
for Dishwasher hood type (HILTA) W13 - W14 - W15



HILTA 09BOTRW15

HILTA 09BOTRW15DX



## Bumpers

- 3012001 SILICONE BUMPER FOR DOOR**  
for Glasswasher/Cupwasher (HILTA) RB10 - SB10



HILTA PACOPO

## Caps

- 3439007 CAP FOR TANK HEXAGONAL 3/8" GAS**  
for all models  
for Dishwasher (HILTA)  
for Glasswasher/Cupwasher (HILTA) RB10 - RB22  
SB10 - SB22



HILTA TAOT038

HILTA TAPL038

- 3240135 BRASS NUT  $\varnothing$  3/8"**



HILTA DAOT038

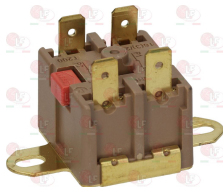
- 3186181 O-RING 03068 EPDM**  
ring thickness 2.62 mm - internal  $\varnothing$  17.13 mm  
for Glasswasher/Cupwasher (HILTA) RB10 - RB22  
SB10 - SB22



HILTA OR122

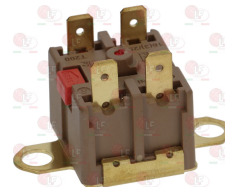
## Contact thermostats

- 3444246 CONTACT THERMOSTAT FOR BOILER 100°C**  
4 contacts 16A 250V  
for boiler



HILTA TESIW15C

- 3744070 SAFETY THERMOSTAT FOR TANK 85°C**  
4 contacts 16A 250V  
for Dishwasher hood type (HILTA) W13 - W15



HILTA



Suitable for:

# HILTA



Suitable for:

## Contactors

### 3454033 CONTACTOR SIEMENS 3RT2016-1AB01

9A 400V 4Kw - coil 24V 50/60Hz  
3 normally open contacts  
1 normally open auxiliary contact



HILTA TEGEW15

### 3454034 CONTACTOR SIEMENS 3TG1001-0AC2

coil 24V 50/60Hz  
3 normally open contacts  
1 normally closed auxiliary contact



HILTA TEPOW15

### 3351012 CONTACTOR SIEMENS 3TG1001-1AL2

16A 230V 50/60Hz  
contacts:3 NO + 1 NC  
for Glasswasher/Cupwasher (HILTA) RB10 - SB10

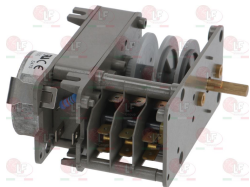


HILTA TEBOFA

## Controllers and changeover switches

### 3322261 CONTROLLER P265 3 CAMS

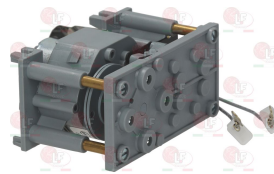
240 seconds cycle  
230V 50/60Hz  
counter-clockwise rotation  
D-shaped pin  $\varnothing$  6x4.6 mm



HILTA

### 3446200 CONTROLLER 7802F1 2 CAMS

180 second cycle  
230V 50Hz  
without pin  
for drain pump  
for Dishwasher (HILTA) S41 - S42

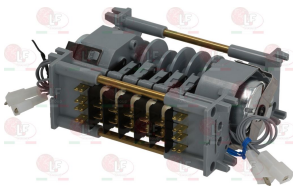


HILTA

HILTA LF-5014710

### 3322147 CONTROLLER 7805DV 5 CAMS

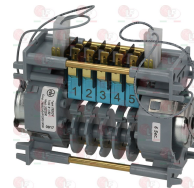
1st cycle 240 seconds  
2nd cycle 40 seconds  
230V 50Hz  
for Dishwasher (HILTA) S42



HILTA

### 3322260 CONTROLLER 7805DV 5 CAMS

1st cycle 6 seconds  
2nd cycle 180 seconds  
230V 50Hz  
without pin  
for Dishwasher hood type (HILTA) W13

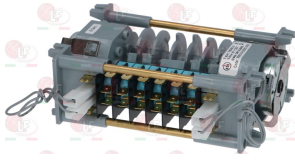


HILTA PRCIW13



Suitable for:

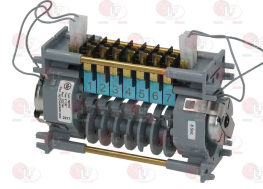
**3322286 CONTROLLER 7806DV 6 CAMS**  
 1st cycle 120 seconds  
 2nd cycle 6 seconds  
 230V 50/60Hz



HILTA PRCIW14

Suitable for:

**3322146 CONTROLLER 7807DV 7 CAMS**  
 1st cycle 60 seconds  
 2nd cycle 120 seconds  
 3rd cycle 180 seconds  
 24V 50/60Hz  
 for Dishwasher hood type (HILTA) W15



HILTA PRCIW15

## Door catches

**3398050 COMPLETE DOOR CATCH**  
 for all models



HILTA 09SCPOCO

## Drain assembly

**3316141 DRAIN ASSEMBLY  $\varnothing$  1"1/4**  
 for Dishwasher (HILTA) S41 - S42



HILTA

**3160152 FILTER RETAINING NUT**  
 for Dishwasher (HILTA) S41 - S42  
 for Glasswasher/Cupwasher (HILTA) RB10 - RB22  
 SB10 - SB22



HILTA NOFIF1

**3160468 BOTTOM PLATE FOR PUMP FILTER**



HILTA

**3160198 ING NUT FOR INLET BOSS  $\varnothing$  1"1/4**  
 for Dishwasher (HILTA) S41 - S42  
 for Glasswasher/Cupwasher (HILTA) RB10 - RB22  
 SB10 - SB22



HILTA DAPL114



Suitable for:

**3160040 O-RING 03168 EPDM**  
ring thickness 2.62 mm - internal  $\varnothing$  42.52 mm  
for Dishwasher (HILTA) S41 - S42  
for Glasswasher/Cupwasher (HILTA) RB10 - RB22  
SB10 - SB22



HILTA OR3168

**3160039 TIE ROD FOR FILTER 52 mm**  
for Dishwasher (HILTA) S41 - S42  
for Glasswasher/Cupwasher (HILTA) RB10 - RB22  
SB10 - SB22



HILTA ASFICOL

# HILTA



Suitable for:

**3160472 SUCTION FILTER FOR PUMP**  
for Dishwasher (HILTA) S41 - S42  
for Glasswasher/Cupwasher (HILTA) RB10 - RB22  
SB10 - SB22



HILTA

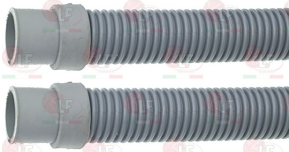
**3160043 TIE ROD FOR FILTER 85 mm**  
for Dishwasher (HILTA) S41 - S42  
for Dishwasher hood type (HILTA) W13 - W14 - W15



HILTA ASFI60

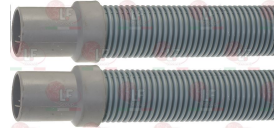
## Drain hoses

**3450110 DRAIN HOSE  $\varnothing$  29x1500 mm**  
sleeves internal  $\varnothing$  24 mm



HILTA TUSC10

**3450189 DRAIN HOSE  $\varnothing$  38x1500 mm**  
sleeves internal  $\varnothing$  31.5 mm



HILTA TUSC30

## Drain plugs

**3448142 COMPLETE OVERFLOW PIPE  $\varnothing$  25x100 mm**  
in plastic  
for Glasswasher/Cupwasher (HILTA) RB10 - RB12  
RB8 - SB08 - SB10 - SB12 - SB22



HILTA 09TPC010

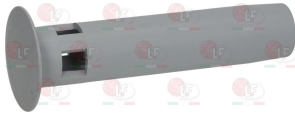
**3316062 COMPLETE DRAIN ASSEMBLY**  
connection  $\varnothing$  1" outlet  $\varnothing$  27 mm  
complete with nut and gasket



HILTA PISC10

Suitable for:

**3448177 COMPLETE OVERFLOW PIPE  $\varnothing$  35x165 mm**  
in plastic  
for Dishwasher (HILTA) S41 - S42



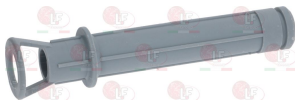
HILTA 09TPC042

**3160198 ING NUT FOR INLET BOSS  $\varnothing$  1"1/4**  
for Dishwasher (HILTA) S41 - S42  
for Glasswasher/Cupwasher (HILTA) RB10 - RB22  
SB10 - SB22



HILTA DAPL114

**3448228 OVERFLOW PIPE  $\varnothing$  25x165 mm**  
of plastic



HILTA

**3448128 OVERFLOW PIPE  $\varnothing$  33x192 mm**  
in plastic  
for Dishwasher hood type (HILTA) W13 - W14 - W15



HILTA TPPLW15

Suitable for:

**3316061 DRAIN ASSEMBLY - FITTING  $\varnothing$  34 mm**  
fitting  $\varnothing$  1"1/4 outlet  $\varnothing$  38 mm  
for Dishwasher (HILTA) S41 - S42



HILTA PISC30

**3160040 O-RING 03168 EPDM**  
ring thickness 2.62 mm - internal  $\varnothing$  42.52 mm  
for Dishwasher (HILTA) S41 - S42  
for Glasswasher/Cupwasher (HILTA) RB10 - RB22  
SB10 - SB22



HILTA OR3168

**1186327 O-RING 03081 EPDM**  
ring thickness 2.62 mm - internal  $\varnothing$  20.24 mm  
for Glasswasher/Cupwasher (HILTA) RB10 - RB22  
SB10 - SB22



HILTA



Suitable for:

# HILTA



Suitable for:

## Electric pumps

**3122434 ELECTRIC PUMP APIM 2031 1HP**  
 inlet external  $\varnothing$  45 mm - outlet external  $\varnothing$  40 mm  
 1HP 230V 50Hz - Rpm 2800  
 capacitor 12  $\mu$ f  
 for Dishwasher (HILTA) S42  
 for Dishwasher (HILTA) S41



HILTA EPIM100A

**3122728 ELECTRIC PUMP IME EP100C 1HP**  
 inlet external  $\varnothing$  46 mm - outlet external  $\varnothing$  41 mm  
 0,75kW 230V 50Hz - capacitor 12.5  $\mu$ f  
 for Dishwasher hood type (HILTA) W14 - W15



HILTA EPIM100T

**3786033 GASKET FOR PUMP HOUSING IME EP100/EP100C**



HILTA GUM100

**3122692 PUMP HOUSING IME EP100/EP100C**  
 inlet external  $\varnothing$  46 mm - outlet external  $\varnothing$  41 mm



HILTA CHIM100C

**3068019 CAPACITOR DUCATI ENERGIA 12,5 $\mu$ F**  
 450V 50/60Hz  
 operating temperature -25 +85°C  
 lead connection 6.35x0.8 mm  
 $\varnothing$  36xh70 mm



HILTA COPO12

**3122444 IMPELLER IME EP100/EP100C  $\varnothing$  100 mm**



HILTA GIIM100

**3122058 SEAL MECHANICAL FOR SHAFT  $\varnothing$  11 mm**  
 metal seal internal  $\varnothing$  10 mm -  $\varnothing$  external 24 mm  
 height 13.5 mm  
 back. element internal  $\varnothing$  14 mm -  $\varnothing$  external 26 mm  
 height 8 mm



HILTA ANTEIM



Suitable for:

Suitable for:

**3122172 ELECTRIC PUMP IME EP30 0.30HP**  
 inlet external  $\varnothing$  32 mm - outlet external  $\varnothing$  31 mm  
 0.22kW 230V 50Hz - Rpm 2800  
 capacitor 10  $\mu$ f  
 for Glasswasher/Cupwasher (HILTA) RB10 - RB22  
 SB10 - SB22



HILTA EPIM030

## Filters

**5024560 FILTER SURFACE LH 538x290 mm**



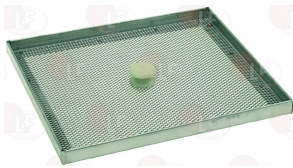
HILTA REFO4204

**5028893 FILTER SURFACE RH 538x290 mm**



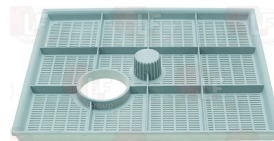
HILTA REFI4204

**3160464 FILTER SURFACE S/STEEL 230x200 mm**  
 for Dishwasher hood type (HILTA) W13 - W14 - W15



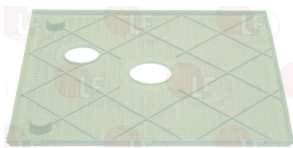
HILTA REF1WX

**3160321 FILTER 230x200 mm**  
 for Dishwasher (HILTA) S41 - S42



HILTA REFO40

**3160322 FILTER 330x310 mm**  
 for Glasswasher/Cupwasher (HILTA) RB22 - SB22



HILTA REF110

**3160037 PLASTIC INNER FILTER FOR TANK 230x200 mm**  
 for Dishwasher hood type (HILTA) W13 - W14 - W15



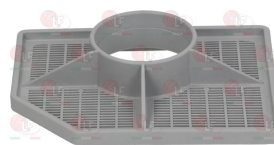
HILTA REF140

**3160042 SUCTION CONNECTION  $\varnothing$  1"1/2**  
 for Dishwasher (HILTA) S41 - S42  
 for Dishwasher hood type (HILTA) W13 - W14 - W15



HILTA PIAS30

**3160323 FILTER BOTTOM PLATE**



HILTA BAF160



Suitable for:

**3160152 FILTER RETAINING NUT**  
for Dishwasher (HILTA) S41 - S42  
for Glasswasher/Cupwasher (HILTA) RB10 - RB22  
SB10 - SB22



HILTA NOFI1

**3160044 O-RING 03187 EPDM**  
ring thickness 2.62 mm - internal  $\varnothing$  47.30 mm  
for Dishwasher (HILTA) S41 - S42  
for Dishwasher hood type (HILTA) W13 - W14 - W15



HILTA OR3187

**3160043 TIE ROD FOR FILTER 85 mm**  
for Dishwasher (HILTA) S41 - S42  
for Dishwasher hood type (HILTA) W13 - W14 - W15



HILTA ASFI60

**3160038 SUCTION CONNECTION  $\varnothing$  1"1/4**  
for Dishwasher (HILTA) S41 - S42  
for Glasswasher/Cupwasher (HILTA) RB10 - RB22  
SB10 - SB22



HILTA PIAS10

**3160152 FILTER RETAINING NUT**  
for Dishwasher (HILTA) S41 - S42  
for Glasswasher/Cupwasher (HILTA) RB10 - RB22  
SB10 - SB22



HILTA NOFI1

# HILTA



Suitable for:

**3160045 NUT FOR INLET ASSEMBLY  $\varnothing$  1"1/2**



HILTA DAPL112

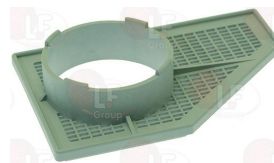
**3160047 SUCTION FILTER**  
for Dishwasher (HILTA) S41 - S42  
for Dishwasher hood type (HILTA) W13 - W14 - W15



HILTA FIPL30

HILTA FIPL60

**3160468 BOTTOM PLATE FOR PUMP FILTER**



HILTA

**3160198 INING NUT FOR INLET BOSS  $\varnothing$  1"1/4**  
for Dishwasher (HILTA) S41 - S42  
for Glasswasher/Cupwasher (HILTA) RB10 - RB22  
SB10 - SB22



HILTA DAPL114



Suitable for:

**3160040 O-RING 03168 EPDM**  
ring thickness 2.62 mm - internal  $\varnothing$  42.52 mm  
for Dishwasher (HILTA) S41 - S42  
for Glasswasher/Cupwasher (HILTA) RB10 - RB22  
SB10 - SB22



HILTA OR3168

**3160472 SUCTION FILTER FOR PUMP**  
for Dishwasher (HILTA) S41 - S42  
for Glasswasher/Cupwasher (HILTA) RB10 - RB22  
SB10 - SB22



HILTA

**3160049 SUCTION FILTER**



HILTA 09FIPL60

## HILTA



Suitable for:

**3160151 SUCTION FILTER FOR PUMP**  
external dimensions 137x92x50 mm  
for Dishwasher (HILTA) S41 - S42  
for Glasswasher/Cupwasher (HILTA) RB10 - RB22  
SB10 - SB22



HILTA FIPL10

**3160039 TIE ROD FOR FILTER 52 mm**  
for Dishwasher (HILTA) S41 - S42  
for Glasswasher/Cupwasher (HILTA) RB10 - RB22  
SB10 - SB22



HILTA ASFICOL

## Guides

**3189048 HOOD SLIDWAY**  
dimensions 595x35 mm  
for Dishwasher hood type (HILTA) W13 - W14 - W15



HILTA GUSCCA

## Handles

**3242081 HANDLE BLACK PLASTIC**  
distance between holes 120 mm - length 252 mm



HILTA MANECH

**3242372 HANDLE GREY**  
distance between mounting holes 120 mm



HILTA MAPLNE



Suitable for:

# HILTA



Suitable for:

## Heating elements

**3355594 HEATING ELEMENT FOR BOILER 2200W 230V**  
 immersed length 247 mm  
 ext.  $\varnothing$  flange 50 mm - for boiler hole  $\varnothing$  30 mm  
 distance between mounting holes 45 mm  
 complete with gasket  $\varnothing$  41 mm (3186195)



HILTA REBOM22

**3355410 HEATING ELEMENT FOR BOILER 2700W 230V**  
 immersed length 290 mm  
 ext.  $\varnothing$  flange 50 mm - for boiler hole  $\varnothing$  30 mm  
 distance between mounting holes 45 mm  
 complete with gasket  $\varnothing$  41 mm (3186195)  
 for Glasswasher/Cupwasher (HILTA) RB22 - SB22



HILTA REBOM27

**3186195 GASKET FLAT SILICONE  $\varnothing$  41x30x3 mm**  
 for HEATING ELEMENT



HILTA GUREBOM

**3355595 HEATING ELEMENT FOR BOILER 3000W 230V**  
 immersed length 280 mm  
 ext.  $\varnothing$  flange 50 mm - for boiler hole  $\varnothing$  30 mm  
 distance between mounting holes 45 mm  
 complete with gasket  $\varnothing$  41 mm (3186195)  
 for Dishwasher (HILTA) S41 - S42



HILTA REBOM30

**3716002 CAP FOR HEATING ELEMENT 1-PHASE BOILER**  
 dimensions 110x100x45 mm



HILTA

**3716002 CAP FOR HEATING ELEMENT 1-PHASE BOILER**  
 dimensions 110x100x45 mm



HILTA



**3355412 HEATING ELEMENT FOR BOILER 4500W 230/415**  
 immersed length 370 mm  
 external flange  $\varnothing$  72 mm  
 with probe receptacle  $\varnothing$  8 mm  
 complete with gasket  $\varnothing$  67 mm (3186014)  
 nut (3528232) and washer (3528238) on request  
 for Dishwasher (HILTA) S41 - S42  
 for Dishwasher hood type (HILTA) W13 - W14 - W15



HILTA REBOT45

**3186014 O-RING 06225 EPDM  $\varnothing$  67 mm**  
 ring thickness 5.34 mm - internal  $\varnothing$  56.52 mm



HILTA GUREBOT

**3355413 HEATING ELEMENT FOR BOILER 6000W 230/415**  
 immersed length 410 mm  
 external flange  $\varnothing$  72 mm  
 with probe receptacle  $\varnothing$  8 mm  
 complete with gasket  $\varnothing$  67 mm (3186014)  
 nut (3528232) and washer (3528238) on request  
 for Dishwasher (HILTA) S41 - S42  
 for Dishwasher hood type (HILTA) W13 - W14 - W15



HILTA REBOT60

**3186014 O-RING 06225 EPDM  $\varnothing$  67 mm**  
 ring thickness 5.34 mm - internal  $\varnothing$  56.52 mm



HILTA GUREBOT

Suitable for:

**3716003 CAP HEATING ELEMENT 3-PHASE BOILER**  
 dimensions 110x100x43 mm



HILTA PRREBOT

**3716003 CAP HEATING ELEMENT 3-PHASE BOILER**  
 dimensions 110x100x43 mm



HILTA PRREBOT



Suitable for:

Suitable for:

**3455302 HEATING ELEMENT FOR BOILER 9000W 230/400**  
 immersed length 395 mm  
 ext. flange  $\varnothing$  72 mm - with bulb sheathing  
 complete with gasket  $\varnothing$  67 mm (3186014)  
 nut on request (3528233) and washer (3528238)  
 for Dishwasher hood type (HILTA) W13 - W14 - W15

**3186014 O-RING 06225 EPDM  $\varnothing$  67 mm**  
 ring thickness 5.34 mm - internal  $\varnothing$  56.52 mm



HILTA REBOT90

HILTA 09REBO90

HILTA GUREBOT

**3355407 HEATING ELEMENT FOR W. TANK 1800W 230V**  
 immersed length 315 mm  
 connection  $\varnothing$  12 mm  
 for Glasswasher/Cupwasher (HILTA) RB22 - SB22  
 for Dishwasher (HILTA) LAC800A



HILTA 09REVA18

**3355408 HEATING ELEMENT FOR W. TANK 2500W 230V**  
 immersed length 400 mm  
 connection  $\varnothing$  12 mm  
 for Dishwasher (HILTA) S41 - S42

**3455414 HEAT.ELEMENT PROTECTION - MOULD 41 UNI**



HILTA 09REVA22

HILTA 09REVA25

HILTA PRREVA

**3355409 HEATING ELEMENT FOR W. TANK 4500W 230V**  
 immersed length 280 mm  
 connection  $\varnothing$  1"1/4 (43 mm)  
 complete with gasket  $\varnothing$  54 mm (3186010)  
 for Dishwasher hood type (HILTA) W13 - W14 - W15  
 for Dishwasher (HILTA) W14

**3186010 ASBESTOS FREE FLAT GASKET  $\varnothing$  54x42x2 mm**



HILTA REVAM45

HILTA 09REVA45

HILTA GUREVA45

Suitable for:

**3355596 HEATING ELEMENT FOR W. TANK 800W 230V**  
 immersed length 330 mm  
 width 50 mm - height 30 mm  
 connection  $\varnothing$  12 mm  
 for Glasswasher/Cupwasher (HILTA) RB10 - SB10



HILTA 09REVAM08

Suitable for:

**3786562 ASBESTOS FREE FLAT GASKET  $\varnothing$  18x12x2 mm**



HILTA GUREVA

## Hinges, catches and accessories

**3391046 BUSHING FOR DOOR HINGE**  
 for Glasswasher/Cupwasher (HILTA) RB10 - SB10



HILTA DIPEPO

**3053319 DOOR SPRING LH**  
 for Glasswasher/Cupwasher (HILTA) RB10 - SB10



HILTA MOSX10

**3053320 DOOR SPRING RH**  
 for Glasswasher/Cupwasher (HILTA) RB10 - SB10



HILTA MODX10

## Hose-end fittings

**3391042 HOSE-END FITTING FOR RINSE SHAFT  $\varnothing$  16 mm**  
 for Dishwasher (HILTA) S41 - S42  
 for Glasswasher/Cupwasher (HILTA) RB10 - RB22  
 SB10 - SB22



HILTA PGRIFRN

**3315027 T-HOSE END FITTING**



HILTA RAPL2T

**3743269 TOP RINSE ARM FITTING**



HILTA GOASRS

**3349601 3-WAY HOSE-END FITTING**



HILTA RAPL2T41



Suitable for:

# HILTA



Suitable for:

**3315107 3-WAYS HOSE END RUBBER FITTING  $\varnothing$  12**



HILTA RAPL1Y

## Hydraulic piping

**3450622 PRESSURE SWITCH PIPE  $\varnothing$  5x13 mm - 5 m**  
temperature  $-30^{\circ}+110^{\circ}\text{C}$   
operating pressure 10 bar  
burst pressure 40 bar  
non-toxic rubber hose  
external  $\varnothing$  13 mm  
internal  $\varnothing$  5 mm  
5-m bundles  
for 50-m bundles see 3450652



HILTA TG0510DS

**3090759 PVC PIPE  $\varnothing$  4/6 mm - 10 m**  
alimentary



HILTA TUCR64

**3450197 RUBBER HOSE  $\varnothing$  11x19 mm - 45 mt**  
temperature  $-30^{\circ}+110^{\circ}\text{C}$   
operating pressure 10 bar  
burst pressure 40 bar  
non-toxic rubber hose  
external  $\varnothing$  19 mm  
internal  $\varnothing$  11 mm  
45 m bundles  
for 5-m bundles see 3450297



HILTA TG1117

**3450652 PRESSURE SWITCH PIPE  $\varnothing$  5x13 mm - 50 m**  
temperature  $-30^{\circ}+110^{\circ}\text{C}$   
operating pressure 10 bar  
burst pressure 40 bar  
non-toxic rubber hose  
external  $\varnothing$  13 mm  
internal  $\varnothing$  5 mm  
50-m bundles  
for 5-m bundles see 3450622



HILTA TG0510DS

**3090259 PVC PIPE  $\varnothing$  4/6 mm - 100 m**  
alimentary



HILTA TUCR64

**3450297 RUBBER HOSE  $\varnothing$  11x19 mm - 5 m**  
temperature  $-30^{\circ}+110^{\circ}\text{C}$   
operating pressure 10 bar  
burst pressure 40 bar  
non-toxic rubber hose  
external  $\varnothing$  19 mm  
internal  $\varnothing$  11 mm  
5-m bundles  
for 50-m bundles see 3450197



HILTA TG1117





## Indicator lights

- 3221591 GREEN TORPEDO LAMP 220V**  
 for Dishwasher hood type (HILTA) W13 - W14 - W15  
 for Glasswasher/Cupwasher (HILTA) RB10 - RB22  
 SB10 - SB22



HILTA LASPVE

- 3221128 LAMP RECEPTACLE GREEN**  
 head 14x14 mm -  $\emptyset$  hole 11 mm  
 for Dishwasher hood type (HILTA) W15



HILTA GELUVEW15

- 3221126 INDICATOR LIGHT NEUTRAL 24V**  
 head  $\emptyset$  8 mm - 120°C  
 for Dishwasher hood type (HILTA) W15



HILTA LASPW15

- 3221127 ORANGE LAMP RECEPTACLE**  
 head 14x14 mm - hole  $\emptyset$  11 mm  
 for Dishwasher hood type (HILTA) W15



HILTA GELUGIW15

- 3221126 INDICATOR LIGHT NEUTRAL 24V**  
 head  $\emptyset$  8 mm - 120°C  
 for Dishwasher hood type (HILTA) W15



HILTA LASPW15

- 3221097 INDICATOR LIGHT NEUTRAL 220V**  
 head  $\emptyset$  8 mm - 120°C



HILTA LASPGI

- 3221097 INDICATOR LIGHT NEUTRAL 220V**  
 head  $\emptyset$  8 mm - 120°C



HILTA LASPGI



Suitable for:

# HILTA



Suitable for:

## Inlet hoses

- 1449718 FLEX HOSE  $\varnothing$  3/8" Fp x CFp 370 mm**  
 EPDM hose covered in stainless steel  
 hose external  $\varnothing$  12 mm  
 max temperature 90°C  
 max pressure 20 bar



HILTA TURISUW15

## Interference suppression filters

- 3160099 INTERFERENCE SUPPRES. FILTER F3CF71112F**  
 0.47 $\mu$ F  
 for Dishwasher (HILTA)



HILTA FIANDI

## Labels for control panels

- 5034962 CONTROL PANEL ABS BLACK 313x132 mm**  
 for DISHWASHER SE1P  
 for DISHWASHER SOWEBO 6.1P ET HILTA W13



HILTA PACOW13NE

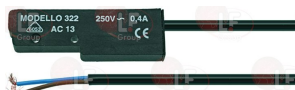
- 5025271 CONTROL PANEL BLUE**  
 dimensions 315x135 mm



HILTA PACOW14

## Microswitches, magnetic

- 3240138 MAGNETIC MICROSWITCH STEM E530 1C**  
 1-NO 250V 0.4A 100W  
 cable length 3000 mm  
 for Dishwasher hood type (HILTA) W14 - W15



HILTA COSIW15



## Microswitches, mechanical

**3803005 COMPLETE DOOR CONTACT**  
for Dishwasher hood type (HILTA) W13 - W14 - W15



HILTA 09GRMW15

**3803018 ACTUATOR FOR REAR MICRO SWITCH 62P/SPPL**  
for Dishwasher hood type (HILTA) W13 - W14 - W15



HILTA

**3240129 COMPLETE MICROSWITCH FOR DOOR**  
for Dishwasher (HILTA) S42 - S42M



HILTA INMIPOOR

**3240135 BRASS NUT  $\varnothing$  3/8"**



HILTA DAOT038

**1348817 CIRCLIP RADIAL  $\varnothing$  4 mm**  
stainless steel- outer  $\varnothing$  9.3 mm - thickness 0.7 mm  
UNI 7434 - DIN 6799



HILTA ANSEMI

**3803034 COMPLETE MICRO SUPPORT**  
for Dishwasher (HILTA) S42 - S42M



HILTA 09INMIRS

**3240134 MICROSWITCH REAR BODY**



HILTA

**1186352 O-RING 02050 EPDM**  
ring thickness 1.78 mm - internal  $\varnothing$  12.42 mm  
for Dishwasher (HILTA) S41 - S42



HILTA

**3186181 O-RING 03068 EPDM**  
ring thickness 2.62 mm - internal  $\varnothing$  17.13 mm  
for Glasswasher/Cupwasher (HILTA) RB10 - RB22  
SB10 - SB22



HILTA OR122

**3240133 ROD FOR MICROSWITCH STAINL. STEEL 77 mm**



HILTA ASMIPO



Suitable for:

**3240132 SPRING FOR ROD**

**HILTA**

Suitable for:



HILTA MOMIPO

## Pressure switches

**3320075 PRESSURE SWITCH 1 LEVEL**  
calibration 50/20 mm  
250V 16A  
max operating temperature 85°C  
for Dishwasher (HILTA) S41 - S42 - S49 - S55  
for Glasswasher/Cupwasher (HILTA) RB10 - RB22  
SB10 - SB22



HILTA PRLI10

**3320076 PRESSURE SWITCH 1 LEVEL**  
calibration 60/30 mm  
250V 16A  
max operating temperature 85°C  
for Dishwasher (HILTA) S41 - S42



HILTA PRLI08

**3320208 PRESSURE SWITCH 1 LEVEL**  
calibration 90/30 mm



HILTA PRLIW15

## Probes

**5044697 SENSOR TANK TEMPERATURE**  
bulb  $\varnothing$  6.5x25 mm - cable length 1600 mm



HILTA SETEBO

## Relays

**3360002 PUMP DELAYING RELAY 24V**



HILTA RIPOW15





## Rinse aid containers and spare parts

**3066040 COMPLETE RINSE AID CONTAINER**  
for Dishwasher (HILTA) S41 - S42



HILTA TABRRS

**3244008 LIGHT BLUE FRONT FRAME OMNI11**  
for Dishwasher (HILTA) S41 - S42



HILTA COTAAZ

**3439001 RINSE AID CONTAINER**  
for Dishwasher (HILTA) S41 - S42



HILTA

**3519014 BLACK FRONT FRAME**  
for Dishwasher (HILTA) S41 - S42



HILTA

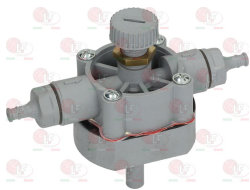
**3324004 PLUG FOR RINSE AID CONTAINER  $\varnothing$  2x80 mm**  
for Dishwasher (HILTA) S41 - S42



HILTA PECOBR

## Rinse aid pumps and accessories

**3090070 DOSING PUMP IB1 FOR RINSE AID**  
with smooth connecting tube  $\varnothing$  10 mm  
flow rate adjuster



HILTA DOBRDE

**3090072 INJECTOR NON-RETURN VALVE**



HILTA VASIDO

**3090073 INJECTOR DIAPHRAGM**



HILTA METRDO



Suitable for:

# HILTA



Suitable for:

## Salt containers and accessories

**3067001 SALT CONTAINER**  
for Dishwasher (HILTA) S41 - S42



HILTA COSALE

**3067007 SALT CONTAINER CAP**



HILTA TACOSA

**3067002 FLAT GASKET EPDM**  $\varnothing$  82x64x3 mm  
for salt container



HILTA GUCOSA

**3067005 SALT CONTAINER RING NUT**



HILTA GHCOSA

## Solenoid valves

**3120005 SOLEN. VALVE ELBI TYPE 329 1 WAY 180°**  
220/240V 50/60Hz - max. temperature 90°C  
inlet 3/4" - outlet  $\varnothing$  10.5 mm



HILTA ELVA1V

**3120505 SOLEN. VALVE ELBI TYPE 329 1 WAY 180°**  
24V 50/60Hz - max. temperature 90°C  
inlet 3/4" - outlet  $\varnothing$  10.5 mm



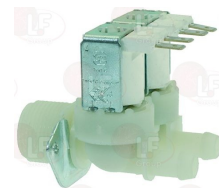
HILTA ELVA1V24

**3120007 SOLEN. VALVE ELBI TYPE 349 2 WAY 180°**  
220/240V 50/60Hz - max. temperature 90°C  
inlet 3/4" - two outlets  $\varnothing$  10.5 mm



HILTA ELVA2V

**3120407 SOLEN. VALVE T&P 2 WAY 180°**  
230V 50/60Hz - max. temperature 90°C  
inlet 3/4" - two outlets  $\varnothing$  10.5 mm



HILTA ELVA2V

**3120014 SOLENOID VALVE ELBI TYPE 369 3-WAY 180°**  
220/240V 50/60Hz - max temperature 90°C  
inlet 3/4" - three outlets  $\varnothing$  10.5 mm



HILTA ELVA3V



## Spare parts for pumps

- 3122754 PUMP HOUSING IME**  
inlet external  $\varnothing$  46 mm - outlet external  $\varnothing$  40 mm



HILTA CHIM100A

## Springs

- 3250211 HOOD LIFTING SPRING 880 mm**  
for OMNIWASH SEI 1PCQ-2PCQ-2PCQB  
for SIMONELLI LTM1500-LTM1600  
for Dishwasher hood type (HILTA) W15T



HILTA MOCA15

- 3318013 SPRING HOOK PULLEY**  
for Dishwasher hood type (HILTA) W13 - W14 - W15



HILTA AGMO15

- 3053526 TIE-ROD FOR COVER STAINLESS STEEL**



HILTA TIMOCA

## Supports for wash and rinse arms

- 3743200 COMPLETE LOWER DRUM SUPPORT**  
for Dishwasher (HILTA) S41 - S42  
for Dishwasher hood type (HILTA) W13 - W14 - W15



HILTA SULR130

- 5014723 GASKET FLAT CORK 70x57x3 mm**  
central hole  $\varnothing$  31 mm



HILTA GUSUW13

- 3743054 COMPLETE WATER INLET FITTING**  
for Dishwasher (HILTA) S41 - S42



HILTA PIEN42

- 3160198 ING NUT FOR INLET BOSS  $\varnothing$  1"1/4**  
for Dishwasher (HILTA) S41 - S42  
for Glasswasher/Cupwasher (HILTA) RB10 - RB22  
SB10 - SB22



HILTA DAPL114



Suitable for:

**3243526 LOWER RINSE SUPPORT**  
for Dishwasher (HILTA) S41 - S42



HILTA SUR142

**3243530 SPINDLE EXTENSION**  
for Dishwasher (HILTA) S41 - S42  
for Dishwasher hood type (HILTA) W13 - W14 - W15



HILTA PRPE30

**3743807 COUPLING FOR SPINDLE FASTENING**



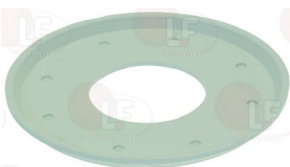
HILTA PGRSSB

**3243527 LOWER SUPPORT SHORT MODEL**  
for Glasswasher/Cupwasher (HILTA) RB10 - RB22  
SB10 - SB22



HILTA SULR110

**3743265 BOTTOM RING NUT**  
for Dishwasher hood type (HILTA) W13 - W14 - W15



HILTA GHLAIN

# HILTA



Suitable for:

**1186466 O-RING 03181 EPDM**  
ring thickness 2.62 mm - internal  $\varnothing$  45.69 mm  
for group flange  
for Dishwasher (HILTA) S41 - S42



HILTA OR3181

**3243531 WASH ARM ASSEMBLY SPINDLE 85 mm**  
for Dishwasher hood type (HILTA) W13 - W14 - W15



HILTA PEIN30

**3743808 INTERNAL FASTENING SUPPORT FOR SPINDLE**



HILTA GORSSB

**3243532 ARM ASSEMBLY SPINDLE 72 mm**  
for Glasswasher/Cupwasher (HILTA) RB10 - RB22  
SB10 - SB22



HILTA PEIN10

**5014713 CYLINDER HEAD SCREW M5x16**  
stainless steel - with hexagon socket  
UNI 5931 - DIN 912 - ISO 4762



HILTA VIEI516



Suitable for:

**3743058 GAS NUT  $\varnothing$  1"**  
for Glasswasher/Cupwasher (HILTA) RB10 - RB22  
SB10 - SB22



HILTA DAPL100

**3186847 O-RING 03131 EPDM**  
ring thickness 2.62 mm - internal  $\varnothing$  32.99 mm  
for Glasswasher/Cupwasher (HILTA) RB10 - RB22  
SB10 - SB22



HILTA OR3131

**3243529 SPINDLE EXTENSION**  
for Glasswasher/Cupwasher (HILTA) RB10 - RB22  
SB10 - SB22



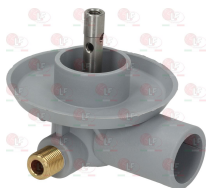
HILTA PRPE10

**3743565 RINSE ROD SUPPORT EXTENSION OT**  
for Dishwasher (HILTA) S41 - S42  
for Glasswasher/Cupwasher (HILTA) RB10 - RB22  
SB10 - SB22



HILTA

**3243516 UPPER WASH ARM ASSEMBLY SUPPORT**  
for Dishwasher (HILTA) S41 - S42  
for Dishwasher hood type (HILTA) W13 - W14 - W15



HILTA SULRSUW15

# HILTA



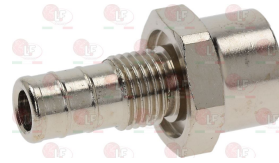
Suitable for:

**3528213 HEXAGONAL NUT MID M5**  
st./steel - UNI 5588 - DIN 934 - ISO 4032



HILTA DAMEM05

**3743056 RINSE CONNECTION**



HILTA SURH10

**3743057 WATER INLET SUPPORT**  
for Glasswasher/Cupwasher (HILTA) RB10 - RB22  
SB10 - SB22



HILTA PIEN10

**3243532 ARM ASSEMBLY SPINDLE 72 mm**  
for Glasswasher/Cupwasher (HILTA) RB10 - RB22  
SB10 - SB22



HILTA PEIN10



Suitable for:

**3743215 HOOD UPPER SUPPORT**  
for Dishwasher hood type (HILTA) W15



HILTA SULRSUW15

# HILTA



Suitable for:

**3243533 UPPER WASH ARM ASSEMBLY SUPPORT**  
for Dishwasher (HILTA) S41 - S42



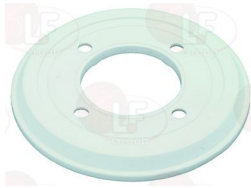
HILTA SULRSU

**3243515 GASKET FLAT CORK  $\varnothing$  85 mm**  
for Dishwasher (HILTA) S41 - S42



HILTA GUSULQ

**3243514 UPPER RING NUT  $\varnothing$  110 mm**  
for Dishwasher (HILTA) C5000 - C5010 - C5020  
NC501 - S41 - S42



HILTA GHLASU

**3743055 WASHING COLUMN 380 mm**  
for Glasswasher/Cupwasher (HILTA) RB10 - RB22  
SB10 - SB22



HILTA COLA10

**3743524 EXTENSION FOR WASHING COLUMN**  
for Glasswasher/Cupwasher (HILTA) RB10 - RB22  
SB10 - SB22



HILTA PRCO10

**3743568 EXTENSION FOR WASHING COLUMN**  
for Glasswasher/Cupwasher (HILTA) RB10 - RB22  
SB10 - SB22



HILTA

**3743058 GAS NUT  $\varnothing$  1"**  
for Glasswasher/Cupwasher (HILTA) RB10 - RB22  
SB10 - SB22



HILTA DAPL100



**3186847 O-RING 03131 EPDM**  
 ring thickness 2.62 mm - internal  $\varnothing$  32.99 mm  
 for Glasswasher/Cupwasher (HILTA) RB10 - RB22  
 SB10 - SB22



HILTA OR3131



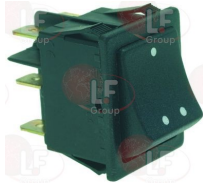
**3743576 WASHING COLUMN 4CT MOULD 24**  
 for Dishwasher (HILTA) S41 - S42



HILTA

## Switches

**3319195 CHANGEVER SWITCH 2 POLE BLACK BU. SCREE**  
 16(4)A 250V - max. temperature 120°C  
 mounting hole 22x30 mm - silk screen printing I-II



HILTA SECIEX

**3319175 CHANGEVER SWITCH 2 POLE GREEN 16A 24V**  
 16(4)A 24V - max. temperature 120°C  
 with indicator light - mounting hole 22x30 mm



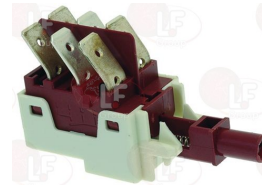
HILTA DELAW15

**3319030 CHANGEVER SWITCH 2 POLE GREEN 16A 250V**  
 16(4)A 250V - max. temperature 120°C  
 with indicator light - mounting hole 22x30 mm



HILTA INGEVE

**3319627 DOUBLE CHANGE OVER SWITCH 16A 250V**  
 for Dishwasher hood type (HILTA) W13 - W15



HILTA DEGEW13

**3319174 PUSH-BUTTON BIPOLAR ORANGE 16A 250V**  
 16(4)A 250V - max. temperature 120°C  
 with indicator light - mounting hole 22x30 mm  
 for Dishwasher (HILTA) S41 - S42



HILTA

**3319131 PUSH-BUTTON START YELLOW 250V 16A**  
 bipolar switch  
 with indicator light  
 mounting hole 12x34 mm  
 for Glasswasher/Cupwasher (HILTA) RB10 - RB22  
 SB10 - SB22



HILTA PUCIRB



Suitable for:

# HILTA



**3319172 PUSH-BUTTON 2 POLE HOT/COLD GREEN**  
 16(6)A/250V - max. temperature 120°C  
 silk screen printing hot - cold  
 with indicator light - mounting hole 22x30 mm  
 for Dishwasher (HILTA) S41 - S42



HILTA PURFEX

Suitable for:

**3319176 PUSH-BUTTON 2 POLE ORANGE REGENERATION**  
 10(4)A 250V - max. temperature 120°C  
 with indicator light - mounting hole 22x30 mm  
 for Dishwasher (HILTA) S41 - S42



HILTA PURIDE

**3319173 PUSH-BUTTON 2 POLE ORANGE 16A 250V**  
 16(4)A 250V - max. temperature 120°C  
 with indic. light - silk screen print. drain pump  
 mounting hole 22x30 mm  
 for Dishwasher (HILTA) S41 - S42



HILTA PUPOSC

**3319132 PUSH-BUTTON 2 POLE RINSE YELLOW**  
 push-button 2 pole  
 with indicator light 16A 250V  
 mounting hole 12x34 mm  
 for Glasswasher/Cupwasher (HILTA) RB10 - RB22  
 SB10 - SB22



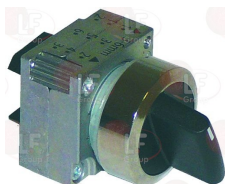
HILTA PURFRB

**3319171 PUSH-BUTTON 2-POLE ORANGE 16A 24V**  
 16(4)A 24V - max. temperature 120°C  
 with indicator light - mounting hole 22x30 mm  
 for Dishwasher hood type (HILTA) W15



HILTA PURIW15

**3319524 SWITCH ON/OFF SIEMENS**  
 with support  
 mounting hole  $\varnothing$  22 mm  
 for Dishwasher hood type (HILTA) W14



HILTA SUINW15

HILTA 09INGEW15

**3319510 CONTACT SIEMENS 3SB3400-0B 10A 400V**  
 1 contact NO  
 for Dishwasher hood type (HILTA) W14



HILTA COELNO

HILTA COELNO905



Suitable for:

**3454040 CONTACT SIEMENS 3SB3400-0C 12A 400V**  
1 contact NC  
for Dishwasher hood type (HILTA) W13 - W14 - W15



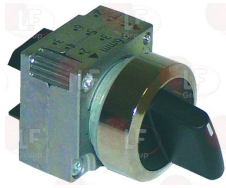
HILTA COELNC

# HILTA



Suitable for:

**3319523 SWITCH 3 POSITIONS SIEMENS**  
with support  
mounting hole  $\varnothing$  22 mm  
for Dishwasher hood type (HILTA) W14



HILTA INGEW15

HILTA SECIW15

HILTA 09SECIW15

**3319510 CONTACT SIEMENS 3SB3400-0B 10A 400V**  
1 contact NO  
for Dishwasher hood type (HILTA) W14



HILTA COELNO

HILTA COELNO905

**3454040 CONTACT SIEMENS 3SB3400-0C 12A 400V**  
1 contact NC  
for Dishwasher hood type (HILTA) W13 - W14 - W15



HILTA COELNC

## Telethermometers

**3441011 TELE-THERMOMETER BLACK 56x25 mm 0-120°C**  
plastic case  
capillary length 1500 mm  
bulb  $\varnothing$  6x15 mm



HILTA TEELT



Suitable for:

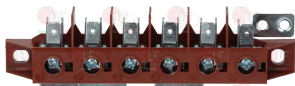
# HILTA



Suitable for:

## Terminal blocks

**3247009 TERMINAL BLOCK 6-POLES FV122/B 40A 600V**  
 for cable max 6 mm<sup>2</sup>  
 operating temperature 150°C  
 nominal voltage 450 V



HILTA MOSUTR

## Thermostats

**3444268 SINGLE-PHASE THERMOSTAT 0-90°C**  
 covered capillary 1000 mm  
 bulb  $\varnothing$  6,5x95 mm  
 15A 250V  
 D shaft  $\varnothing$  6x4,6 mm  
 for Dishwasher hood type (HILTA) W14



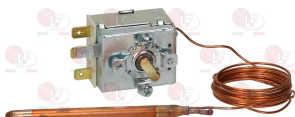
HILTA TERELR

**3444269 SINGLE-PHASE THERMOSTAT 52°C**  
 covered capillary 1000 mm  
 bulb  $\varnothing$  6.5x95 mm  
 15A 250V



HILTA TEFILA

**3444004 THERMOSTAT SINGLE-PHASE TR2 0-90°C**  
 D-shaped pin  $\varnothing$  6x4.6 mm  
 capillary length 1500 mm - 15A 250V  
 bulb  $\varnothing$  6.5x95 mm



HILTA

## Timers

**3360003 2ND PUMP DELAYING DEVICE 230V 50/60Hz**



HILTA RIPO60



## Tubing and hoses

**3248177 DRAIN HOSE FOR TANK**  
 internal  $\varnothing$  38 mm  
 overall length 455 mm  
 for Dishwasher (HILTA) S41 - S42



HILTA MASC42

**3248171 INLET HOSE**  
 internal  $\varnothing$  43 mm  
 overall length 335 mm  
 for Dishwasher hood type (HILTA) W13 - W14 - W15



HILTA MAAS30

**3248173 INLET HOSE**  
 internal  $\varnothing$  43 mm  
 overall length 485 mm  
 for Dishwasher hood type (HILTA) W13 - W14 - W15



HILTA MAAS60

**3248174 INLET HOSE**  
 internal  $\varnothing$  30 mm - 37 mm  
 for Glasswasher/Cupwasher (HILTA) RB10 - RB22  
 SB10 - SB22



HILTA MAAS10

**3248175 INLET HOSE**  
 internal  $\varnothing$  44 mm  
 overall length 280 mm  
 for Dishwasher (HILTA) S41 - S42



HILTA MAAS42

**3248023 OUTLET HOSE**  
 internal  $\varnothing$  30 mm  
 overall length 100 mm  
 for Glasswasher/Cupwasher (HILTA) RB10 - RB22  
 SB10 - SB22



HILTA MAMAR1

**3248045 OUTLET HOSE**  
 $\varnothing$  internal 36 mm  
 overall length 320 mm  
 for Dishwasher (HILTA) S41 - S42



HILTA MAMAR4

**3248172 OUTLET HOSE**  
 internal  $\varnothing$  30 and 40 mm  
 overall length 490 mm  
 for Dishwasher hood type (HILTA) W13 - W14 - W15



HILTA MAMAW15



Suitable for:

# HILTA



**3248179 OUTLET HOSE**  
 internal  $\varnothing$  25 mm  
 overall length 370 mm  
 for Glasswasher/Cupwasher (HILTA) RB10 - RB22  
 SB10 - SB22



HILTA MASC10

**3349495 OUTLET HOSE LOWER/UPPER**  
 internal  $\varnothing$  29/35mm



HILTA MAMA2US2

**3248176 OUTLET HOSE UPPER/LOWER**  
 internal  $\varnothing$  35 - 37 - 40 mm  
 overall length 1400 mm  
 for Dishwasher (HILTA) S41 - S42



HILTA MAMA2US4

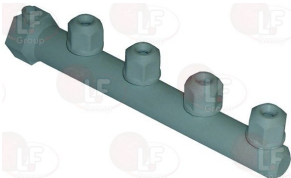
**3349477 PUMP OUTLET HOSE**  
 internal  $\varnothing$  29-40 mm  
 overall length 1275 mm  
 for Dishwasher hood type (HILTA) W13 - W14 - W15



HILTA MAMAW13

## Wash and rinse arms for warewashers

**3743602 LOWER/UPPER WASH ARM**  
 length 220 mm with jets  
 for Glasswasher/Cupwasher (HILTA) RB10 - RB22  
 SB10 - SB22



HILTA 09ASLR20

**3186183 O-RING 0128 EPDM**  
 ring thickness 2.62 mm - internal  $\varnothing$  20.63 mm



HILTA OR128

**3501161 WASH JET**  
 for Dishwasher (HILTA) C5000 - C5010 - C5020  
 NC501 - S41 - S42  
 for Glasswasher/Cupwasher (HILTA) C2010L - RB10  
 RB22 - R1010 - SB10 - SB22



HILTA GELAFR

**3501162 WASH JET**  
 for Dishwasher (HILTA) S41 - S42  
 for Glasswasher/Cupwasher (HILTA) RB10 - RB22  
 SB10 - SB22



HILTA DILAFR



**3743661 RINSE ARM ASSY**  
for Dishwasher (HILTA) S41 - S42  
for Glasswasher/Cupwasher (HILTA) RB10 - RB22  
SB10 - SB22



HILTA 09ASRR10

**3243009 O-RING 0106 EPDM**  
ring thickness 1.78 mm - internal  $\varnothing$  6.75 mm



HILTA OR106

**3743267 RINSE ARM CAP**  
for Dishwasher (HILTA) S41 - S42  
for Glasswasher/Cupwasher (HILTA) RB10 - RB22  
SB10 - SB22



HILTA TAAS10

**3501164 RINSE JET DIFFUSER**



HILTA DIRIFR

**3501237 UPPER SUPPORT RINSE JET**  
for all models



HILTA SUGERI

Suitable for:

**3501236 LOWER SUPPORT RINSE JET**  
for all models



HILTA BAGERI

**3186183 O-RING 0128 EPDM**  
ring thickness 2.62 mm - internal  $\varnothing$  20.63 mm



HILTA OR128

**3501255 RINSE JET**



HILTA GERIFR

**3743059 RINSE SHAFT SUPPORT**  
for Dishwasher (HILTA) S41 - S42  
for Glasswasher/Cupwasher (HILTA) RB10 - RB22  
SB10 - SB22



HILTA SUAS10N



Suitable for:

# HILTA



**3743603 UPPER WASH ARM**  
height 145 mm - length 235 mm



HILTA 09ASLS22

**3186183 O-RING 0128 EPDM**  
ring thickness 2.62 mm - internal  $\varnothing$  20.63 mm



HILTA OR128

**3743645 TOP WASH ARM ASSEMBLY JET SUPPORT CT**  
for Dishwasher (HILTA) S42  
for Glasswasher/Cupwasher (HILTA) RB10 - RB22  
SB10 - SB22



HILTA SUGELA

**3501161 WASH JET**  
for Dishwasher (HILTA) C5000 - C5010 - C5020  
NC501 - S41 - S42  
for Glasswasher/Cupwasher (HILTA) C2010L - RB10  
RB22 - R1010 - SB10 - SB22



HILTA GELAFR

**3243486 WASH AND RINSE ARM ASSEMBLY**  
length 500 mm  
for Dishwasher (HILTA) S41 - S42



HILTA 09GILR40

Suitable for:

**3743646 BOTTOM WASH ARM ASSEMBLY SUPPORT CT**  
for Dishwasher (HILTA) S42  
for Glasswasher/Cupwasher (HILTA) RB10 - RB22  
SB10 - SB22



HILTA BAGELA

**1186352 O-RING 02050 EPDM**  
ring thickness 1.78 mm - internal  $\varnothing$  12.42 mm  
for Dishwasher (HILTA) S41 - S42



HILTA

**3743562 WASH ARM CT MOD.2/4 WHITE**  
for Dishwasher (HILTA) S41 - S42



HILTA TAAS30

**3501162 WASH JET**  
for Dishwasher (HILTA) S41 - S42  
for Glasswasher/Cupwasher (HILTA) RB10 - RB22  
SB10 - SB22



HILTA DILAFR

**3501166 LEFT-HAND WASH JET**  
for Glasswasher/Cupwasher (HILTA) RB10 - RB22  
SB10 - SB22



HILTA GELASS



Suitable for:

**3243497 LEFTHAND RINSE ARM**  
complete with jets  
for Dishwasher (HILTA) S41 - S42  
for Dishwasher hood type (HILTA) W13 - W14 - W15



HILTA 09ARIS40

**3186181 O-RING 03068 EPDM**  
ring thickness 2.62 mm - internal  $\varnothing$  17.13 mm  
for Glasswasher/Cupwasher (HILTA) RB10 - RB22  
SB10 - SB22



HILTA OR122

**3501165 RIGHT-HAND WASH JET**  
for Glasswasher/Cupwasher (HILTA) RB10 - RB22  
SB10 - SB22



HILTA GELASD

**3243502 RIGHTHAND WASH ARM**  
complete with jets  
for Dishwasher (HILTA) S41 - S42  
for Dishwasher hood type (HILTA) W13



HILTA 09ALDX40

**3243488 RINSE JET CAP**  
for Dishwasher (HILTA) S41 - S42  
for Dishwasher hood type (HILTA) W13 - W14 - W15



HILTA TAGERI

# HILTA



Suitable for:

**3243501 LEFTHAND WASH ARM**  
complete with jets  
for Dishwasher (HILTA) S41 - S42  
for Dishwasher hood type (HILTA) W13



HILTA 09ALSX40

**1186356 O-RING 03075 EPDM**  
ring thickness 2.62 mm - internal  $\varnothing$  18.72 mm  
for Dishwasher (HILTA) S41 - S42  
for Dishwasher hood type (HILTA) W13 - W14 - W15  
for Glasswasher/Cupwasher (HILTA) RB10 - RB22  
SB10 - SB22



HILTA OR124

**3243496 RIGHTHAND RINSE ARM**  
complete with jets  
for Dishwasher (HILTA) S41 - S42  
for Dishwasher hood type (HILTA) W13 - W14 - W15



HILTA 09ARID40

**3501168 RINSE JET**  
for Glasswasher/Cupwasher (HILTA) RB10 - RB22  
SB10 - SB22



HILTA GERIFS

**3501169 RINSE JET RING**  
for Glasswasher/Cupwasher (HILTA) RB10 - RB22  
SB10 - SB22



HILTA GHGERI



Suitable for:

**3243493 WASH AND RINSE ARM ASSEMBLY BOSS**  
complete with bushings  
for Glasswasher/Cupwasher (HILTA) RB10 - RB22  
SB10 - SB22



HILTA MOGIFS

HILTA MOGIFSB

# HILTA



Suitable for:

**3501167 WASH JETS RING**  
for Dishwasher (HILTA) S41 - S42  
for Dishwasher hood type (HILTA) W13 - W14 - W15  
for Glasswasher/Cupwasher (HILTA) RB10 - RB22  
SB10 - SB22



HILTA GHGELA

**3243491 WASH AND RINSE ARM ASSEMBLY**  
length 500 mm  
for Dishwasher hood type (HILTA) W14 - W15



HILTA 09GILR60

**3243532 ARM ASSEMBLY SPINDLE 72 mm**  
for Glasswasher/Cupwasher (HILTA) RB10 - RB22  
SB10 - SB22



HILTA PEIN10

**3243497 LEFTHAND RINSE ARM**  
complete with jets  
for Dishwasher (HILTA) S41 - S42  
for Dishwasher hood type (HILTA) W13 - W14 - W15



**3243499 LEFTHAND WASH ARM**  
complete with jets  
for Dishwasher hood type (HILTA) W14 - W15



HILTA 09ARIS40

**3243492 LEFTHAND WASH JET LARGE MODEL**  
for Dishwasher hood type (HILTA) W14 - W15



HILTA 09ALSX60

**3243496 RIGHTHAND RINSE ARM**  
complete with jets  
for Dishwasher (HILTA) S41 - S42  
for Dishwasher hood type (HILTA) W13 - W14 - W15



HILTA GELALS

**3243498 RIGHTHAND WASH ARM**  
complete with jets  
for Dishwasher hood type (HILTA) W14 - W15



HILTA 09ARID40

**3243487 RIGHTHAND WASH JET LARGE MODEL**  
for Dishwasher hood type (HILTA) W14 - W15



HILTA 09ALDX60

HILTA GELALD



Suitable for:

**3501168 RINSE JET**  
for Glasswasher/Cupwasher (HILTA) RB10 - RB22  
SB10 - SB22



HILTA GERIFS

**3501169 RINSE JET RING**  
for Glasswasher/Cupwasher (HILTA) RB10 - RB22  
SB10 - SB22



HILTA GHGERI

**3243524 WASH ARM ASSEMBLY LOCKING NUT**  
for Glasswasher/Cupwasher (HILTA) RB10 - RB22  
SB10 - SB22



HILTA NOFIMO

**3501167 WASH JETS RING**  
for Dishwasher (HILTA) S41 - S42  
for Dishwasher hood type (HILTA) W13 - W14 - W15  
for Glasswasher/Cupwasher (HILTA) RB10 - RB22  
SB10 - SB22



HILTA GHGELA

**3743322 WASH AND RINSE ARM ASSEMBLY 310 mm**  
for Glasswasher/Cupwasher (HILTA) RB10 - RB22  
SB10 - SB22



HILTA 09GILR10

# HILTA



Suitable for:

**3243488 RINSE JET CAP**  
for Dishwasher (HILTA) S41 - S42  
for Dishwasher hood type (HILTA) W13 - W14 - W15



HILTA TAGERI

**3243493 WASH AND RINSE ARM ASSEMBLY BOSS**  
complete with bushings  
for Glasswasher/Cupwasher (HILTA) RB10 - RB22  
SB10 - SB22



HILTA MOGIFS

HILTA MOGIFSB

**3243531 WASH ARM ASSEMBLY SPINDLE 85 mm**  
for Dishwasher hood type (HILTA) W13 - W14 - W15



HILTA PEIN30

**3243532 ARM ASSEMBLY SPINDLE 72 mm**  
for Glasswasher/Cupwasher (HILTA) RB10 - RB22  
SB10 - SB22



HILTA PEIN10



Suitable for:

**3501166 LEFT-HAND WASH JET**  
for Glasswasher/Cupwasher (HILTA) RB10 - RB22  
SB10 - SB22



HILTA GELASS

**1186356 O-RING 03075 EPDM**  
ring thickness 2.62 mm - internal  $\varnothing$  18.72 mm  
for Dishwasher (HILTA) S41 - S42  
for Dishwasher hood type (HILTA) W13 - W14 - W15  
for Glasswasher/Cupwasher (HILTA) RB10 - RB22  
SB10 - SB22



HILTA OR124

**3743624 RINSE ARM WITH NOZZLES AND RING NUTS**  
for Glasswasher/Cupwasher (HILTA) RB10 - RB22  
SB10 - SB22



HILTA ASRI10

HILTA 09ARID10

**3501169 RINSE JET RING**  
for Glasswasher/Cupwasher (HILTA) RB10 - RB22  
SB10 - SB22



HILTA GHGERI

**3243524 WASH ARM ASSEMBLY LOCKING NUT**  
for Glasswasher/Cupwasher (HILTA) RB10 - RB22  
SB10 - SB22



HILTA NOFIMO

# HILTA



Suitable for:

**3186860 O-RING 03056 EPDM**  
ring thickness 2.62 mm - internal  $\varnothing$  13.95 mm  
EX OR 0118



HILTA OR118

**3501165 RIGHT-HAND WASH JET**  
for Glasswasher/Cupwasher (HILTA) RB10 - RB22  
SB10 - SB22



HILTA GELASD

**3501168 RINSE JET**  
for Glasswasher/Cupwasher (HILTA) RB10 - RB22  
SB10 - SB22



HILTA GERIFS

**3243493 WASH AND RINSE ARM ASSEMBLY BOSS**  
complete with bushings  
for Glasswasher/Cupwasher (HILTA) RB10 - RB22  
SB10 - SB22



HILTA MOGIFS

HILTA MOGIFSB

**3743268 WASH ARM CAP**  
for Dishwasher hood type (HILTA) W13



HILTA TAGELA





Suitable for:

**3501167 WASH JETS RING**  
for Dishwasher (HILTA) S41 - S42  
for Dishwasher hood type (HILTA) W13 - W14 - W15  
for Glasswasher/Cupwasher (HILTA) RB10 - RB22  
SB10 - SB22



HILTA GHGELA

**3743263 WASH ARM ASSEMBLY 370 mm**



HILTA 09GILR20

**3501166 LEFT-HAND WASH JET**  
for Glasswasher/Cupwasher (HILTA) RB10 - RB22  
SB10 - SB22



HILTA GELASS

**1186356 O-RING 03075 EPDM**  
ring thickness 2.62 mm - internal  $\varnothing$  18.72 mm  
for Dishwasher (HILTA) S41 - S42  
for Dishwasher hood type (HILTA) W13 - W14 - W15  
for Glasswasher/Cupwasher (HILTA) RB10 - RB22  
SB10 - SB22



HILTA OR124

**3501168 RINSE JET**  
for Glasswasher/Cupwasher (HILTA) RB10 - RB22  
SB10 - SB22



HILTA GERIFS

# HILTA

Suitable for:

**3743805 WASH SHAFT WITH JETS RIGHT**



HILTA 09ALDX10

**3243532 ARM ASSEMBLY SPINDLE 72 mm**  
for Glasswasher/Cupwasher (HILTA) RB10 - RB22  
SB10 - SB22



HILTA PEIN10

**3186860 O-RING 03056 EPDM**  
ring thickness 2.62 mm - internal  $\varnothing$  13.95 mm  
EX OR 0118



HILTA OR118

**3501165 RIGHT-HAND WASH JET**  
for Glasswasher/Cupwasher (HILTA) RB10 - RB22  
SB10 - SB22



HILTA GELASD

**3501169 RINSE JET RING**  
for Glasswasher/Cupwasher (HILTA) RB10 - RB22  
SB10 - SB22



HILTA GHGERI





Suitable for:

**3243493 WASH AND RINSE ARM ASSEMBLY BOSS**  
complete with bushings  
for Glasswasher/Cupwasher (HILTA) RB10 - RB22  
SB10 - SB22



HILTA MOGIFS

HILTA MOGIFSB

**3743268 WASH ARM CAP**  
for Dishwasher hood type (HILTA) W13



HILTA TAGELA

**3743264 WASH ARM 200 mm**  
for Glasswasher/Cupwasher (HILTA) RB10 - RB22  
SB10 - SB22



HILTA 09ASLR10

**3501161 WASH JET**  
for Dishwasher (HILTA) C5000 - C5010 - C5020  
NC501 - S41 - S42  
for Glasswasher/Cupwasher (HILTA) C2010L - RB10  
RB22 - R1010 - SB10 - SB22



HILTA GELAFR

# HILTA



Suitable for:

**3243524 WASH ARM ASSEMBLY LOCKING NUT**  
for Glasswasher/Cupwasher (HILTA) RB10 - RB22  
SB10 - SB22



HILTA NOFIMO

**3501167 WASH JETS RING**  
for Dishwasher (HILTA) S41 - S42  
for Dishwasher hood type (HILTA) W13 - W14 - W15  
for Glasswasher/Cupwasher (HILTA) RB10 - RB22  
SB10 - SB22



HILTA GHGELA

**3743510 LOWER/UPPER WASH ARM**  
length 200 mm  
for Glasswasher/Cupwasher (HILTA) RB10 - RB22  
SB10 - SB22



HILTA ASLR10

**3501162 WASH JET**  
for Dishwasher (HILTA) S41 - S42  
for Glasswasher/Cupwasher (HILTA) RB10 - RB22  
SB10 - SB22



HILTA DILAFR



## Wash jets and accessories

**3501163 RINSE JET**



HILTA GERIFR

**3501164 RINSE JET DIFFUSER**



HILTA DIRIFR

**3501236 LOWER SUPPORT RINSE JET**  
for all models



HILTA BAGERI

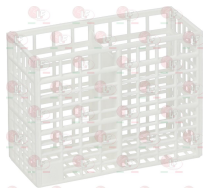
**3501237 UPPER SUPPORT RINSE JET**  
for all models



HILTA SUGERI

## Washing baskets and accessories

**3055078 CUTLERY INSERT RACK 130x55x100 mm**  
with 2 compartments in moplen



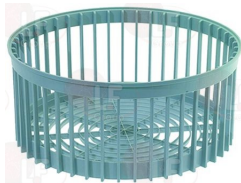
HILTA XCCZPP02

**3055525 GLASS BASKET  $\varnothing$  368x175 mm**  
plastic made  
bottom ring  $\varnothing$  282 mm



HILTA XCCRBR12

**3055484 GLASS RACK  $\varnothing$  400x180 mm**  
made of plastic  
bottom ring  $\varnothing$  280 mm



HILTA XCCRBR20

**3055676 GLASS RACK 350x350x160 mm**



HILTA XCCSBS12

**3055380 GLASS RACK 400x400x160 mm**



HILTA XCCSBS20



Suitable for:

# HILTA



**3055691 ROUND RACK SUPPORT  $\varnothing$  280 mm**  
 for Dishwasher (HILTA) S41 - S42  
 for Dishwasher hood type (HILTA) W13 - W14 - W15  
 for Glasswasher/Cupwasher (HILTA) RB10 - RB22  
 SB10 - SB22



HILTA

**3250227 CIRCLIPS E-9**  
 stainless steel for springs C60  
 $\varnothing$  internal 8,4 mm - thickness 1 mm  
 UNI 7435 - DIN 471  
 for Dishwasher (HILTA) S41 - S42  
 for Dishwasher hood type (HILTA) W13 - W14 - W15  
 for Glasswasher/Cupwasher (HILTA) RB10 - RB22  
 SB10 - SB22



HILTA

**3055668 ROTATING SUPPORT SHAFT SPACER 1-2**  
 for Dishwasher (HILTA) S41 - S42  
 for Dishwasher hood type (HILTA) W13 - W14 - W15  
 for Glasswasher/Cupwasher (HILTA) RB10 - RB22  
 SB10 - SB22



HILTA

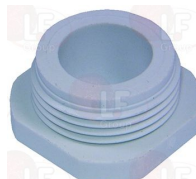
**3055351 SUPPORT FOR ROTATING RACK  $\varnothing$  292 mm**  
 complete with pin  $\varnothing$  15 mm - exchange contacts 120



HILTA GIPC10

Suitable for:

**3528051 BASKET SUPPORT NUT**  
 for Dishwasher (HILTA) S41 - S42  
 for Dishwasher hood type (HILTA) W13 - W14 - W15  
 for Glasswasher/Cupwasher (HILTA) RB10 - RB22  
 SB10 - SB22



HILTA

**3324007 ROTATING SUPPORT PIN CT WITH BALL 1-2**  
 for Dishwasher (HILTA) S41 - S42  
 for Dishwasher hood type (HILTA) W13 - W14 - W15  
 for Glasswasher/Cupwasher (HILTA) RB10 - RB22  
 SB10 - SB22



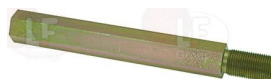
HILTA

**3241838 S/STEEL TURNTABLE DISK 1-2**  
 for Dishwasher (HILTA) S41 - S42  
 for Dishwasher hood type (HILTA) W13 - W14 - W15  
 for Glasswasher/Cupwasher (HILTA) RB10 - RB22  
 SB10 - SB22



HILTA

**3055354 BASE TIE ROD 172 mm**  
 for Dishwasher (HILTA) S41 - S42  
 for Dishwasher hood type (HILTA) W13 - W14 - W15  
 for Glasswasher/Cupwasher (HILTA) RB10 - RB22  
 SB10 - SB22



HILTA TISU10



Suitable for:

**3186181 O-RING 03068 EPDM**  
ring thickness 2.62 mm - internal  $\varnothing$  17.13 mm  
for Glasswasher/Cupwasher (HILTA) RB10 - RB22  
SB10 - SB22



HILTA OR122

**3055353 WASHER FLAT M16**  
internal  $\varnothing$  /external 17/30 mm - thickness 3 mm  
in zinc plated iron alloy  
UNI 6592 - DIN 125 A - ISO 7089



HILTA ROP130

## HILTA



Suitable for:

**3055352 ROTATING SUPPORT GUIDE - HOLE  $\varnothing$  15 mm**  
complete with closing cap  
tank hole for OLD MODEL  
for Dishwasher (HILTA) S41 - S42  
for Dishwasher hood type (HILTA) W13 - W14 - W15  
for Glasswasher/Cupwasher (HILTA) RB10 - RB22  
SB10 - SB22



HILTA SUG110

The data herewith contained may change without notice and LF SpA cannot be held responsible for possible errors stated or resulting by the use of this document. All rights reserved. No part of this publication may be reproduced without written permission by LF SpA.



## Distributing Components, Spare Parts & Accessories in original quality worldwide

- 
- LF SpA HEADQUARTERS**  
via Voltri, 80 - 47522 Cesena (FC) ITALY  
Tel. +39 0547 34 11 11 - Fax +39 0547 34 11 10  
[www.lfricambi724.it](http://www.lfricambi724.it) - [info@lfricambi.it](mailto:info@lfricambi.it)  
Export Dept. Tel. +39 0547 34 11 50 - Fax +39 0547 34 11 55  
[www.lfspareparts724.com](http://www.lfspareparts724.com) - [export@lfspareparts.com](mailto:export@lfspareparts.com)
- LF SpA HOUSEHOLD COMPONENTS DIVISION**  
Via Padriciano, 99 - AREA Science Park - 34149 Trieste (TS) ITALY  
Tel. +39 0547 34 12 42 - Fax +39 0547 34 12 48  
[www.lfspareparts724.com](http://www.lfspareparts724.com) - [info@lfspareparts.com](mailto:info@lfspareparts.com)
- EPGC Sas FRANCE**  
13, Rue des Forts - 59960 Neuville en Ferrain  
Tel. +33 (0)3 20 25 06 21 - Fax +33 (0)3 20 25 34 12  
[www.epgc.com](http://www.epgc.com) - [epgc@epgc.com](mailto:epgc@epgc.com)
- LF GmbH GERMANY**  
Junkersstrasse, 3 - D-82178 Puchheim - München  
Tel. +49 89 89 45 78 66 - Fax +49 89 89 45 78 88  
[www.lfersatzteile724.de](http://www.lfersatzteile724.de) - [info@lfersatzteile.de](mailto:info@lfersatzteile.de)
- LF China REPUBLIC OF CHINA**  
Room 403, No.2, Huadu Mansion, Lane 422, Huanghua Rd.  
Minhang Dist. - 201103 Shanghai  
Tel. +86 (0)21 33 53 66 31 - Fax +86 (0)21 33 53 66 32  
[www.lfspareparts724.com](http://www.lfspareparts724.com) - [china@lfspareparts.com](mailto:china@lfspareparts.com)
- OOO LF RUSSIAN FEDERATION**  
Ul. Anatoliya Zhivova, 8 - office 1 - 123100 Moscow  
Tel./Fax +7 495 725 26 53  
[www.lfspareparts724.ru](http://www.lfspareparts724.ru) - [info@lfspareparts.ru](mailto:info@lfspareparts.ru)
- LF Repuestos Horeca S.L.U. SPAIN**  
Poligono Industrial Carpetania - C/Miguel Faraday, 8 - 28906 Getafe  
Tel. +34 91 477 91 00 - Fax +34 91 477 90 81  
[www.lfrepuestos-horeca724.es](http://www.lfrepuestos-horeca724.es) - [info@lfrepuestos.es](mailto:info@lfrepuestos.es)
- LF Scandinavia Aps - LF Spareparts S.p.A. DENMARK**  
Nupark, 51 - 7500 Holstebro  
Tel. +45 70 70 77 33  
[www.lfspareparts724.dk](http://www.lfspareparts724.dk) - [denmark@lfspareparts.dk](mailto:denmark@lfspareparts.dk)
- LF SpA Cesena (IT) Swiss Branch Steinhausen SWITZERLAND**  
Sennweidstrasse, 45 - CH-6312 Steinhausen  
Tel. +41 (0)41 760 15 80/1 - Fax +41 (0)41 760 15 85  
[www.lfersatzteile724.ch](http://www.lfersatzteile724.ch) - [info@lfersatzteile.ch](mailto:info@lfersatzteile.ch)
- LF Spare Parts Ltd. UNITED KINGDOM**  
A10a Lakeside Business Park, Broadway Lane  
South Cerney, Gloucestershire GL7 5XL  
Tel. +44 (0)1285 86 16 25 - Fax +44 (0)1285 86 39 49  
[www.lfspareparts724.co.uk](http://www.lfspareparts724.co.uk) - [info@lfspareparts.co.uk](mailto:info@lfspareparts.co.uk)
- LF Central Est Europe S.r.o. CZECH REPUBLIC**  
Antala Staska 1859/34  
14000 Praha 4 - KRC  
Tel. +420 730 156 910  
[www.lfspareparts724.cz](http://www.lfspareparts724.cz) - [info@lfspareparts.cz](mailto:info@lfspareparts.cz)
- LF SPARE PARTS INC. USA**  
**Legal address:**  
155 Office Plaza Dr - Suite A - Tallahassee, FL 32301  
**Business/Mailing address:**  
1100 South Tower, 225 Peachtree St., N.E. - Atlanta, GA 30303, USA  
Tel. +1-404-525-2600 - Fax +1-404-586-3528  
[www.lfspareparts724.us](http://www.lfspareparts724.us) - [info@lfspareparts.us](mailto:info@lfspareparts.us)  
Tel. West Coast and Midwest: 206-349-1525 Sauro  
Tel. East Coast and the Caribbean: 786-817-1764 Luis
- 
- AUSTRALIA AND NEW ZEALAND**  
[www.lfspareparts724.com](http://www.lfspareparts724.com)  
[andrea.calvio@lfspareparts.com](mailto:andrea.calvio@lfspareparts.com)
- AUSTRIA**  
[www.lfersatzteile724.at](http://www.lfersatzteile724.at)  
[info@lfersatzteile.at](mailto:info@lfersatzteile.at)
- BALKAN COUNTRIES**  
[www.lfspareparts724.com](http://www.lfspareparts724.com)  
[matija.ramov@lfspareparts.com](mailto:matija.ramov@lfspareparts.com)
- BALTIC COUNTRIES**  
[www.lfspareparts724.com](http://www.lfspareparts724.com)  
[inara.silina@lfspareparts.com](mailto:inara.silina@lfspareparts.com)
- LATIN AMERICA AND THE CARRIBEANS**  
[www.lfrepuestos-horeca724.es](http://www.lfrepuestos-horeca724.es)  
[export@lfrepuestos.es](mailto:export@lfrepuestos.es)
- POLAND**  
[www.lfspareparts724.pl](http://www.lfspareparts724.pl)  
[info@lfspareparts.pl](mailto:info@lfspareparts.pl)
- SOUTH KOREA**  
[www.lfspareparts724.com](http://www.lfspareparts724.com)  
[fabio.doni@lfspareparts.com](mailto:fabio.doni@lfspareparts.com)
- TURKEY**  
[www.lfyedekparca724.com](http://www.lfyedekparca724.com)  
[export@lfspareparts.com](mailto:export@lfspareparts.com)