



# Spare parts for the professional sector: Warewashing equipment



Suitable for:

# DIHR



This catalogue is automatically generated.  
Therefore, the sequence of the items might  
not be always shown at best.  
Updates will be issued in case of additions  
and/or amendments.  
*Suitable universal spare parts may not be included*

Rel. 2018-03091615





Suitable for:

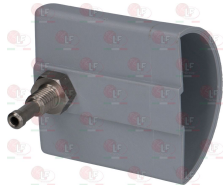
DIHR



Suitable for:

### Air traps

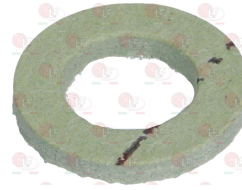
**3060065 AIR CHAMBER 55x31x56 mm**  
hose end fitting  $\varnothing$  6 mm



DIHR 10911/D

DIHR 135911/D

**3060070 GASKET 14x8x1.5 mm**



DIHR 13301

**3060069 HEXAGONAL NUT M8 MEDIUM**  
stainless steel - UNI 5588 - DIN 934 - ISO 4032



DIHR 11702

DIHR 11708

**3060066 AIR CHAMBER 55x31x65 mm**  
hose end fitting  $\varnothing$  6 mm



DIHR 10911/C

DIHR 135911/C

**3060070 GASKET 14x8x1.5 mm**



DIHR 13301

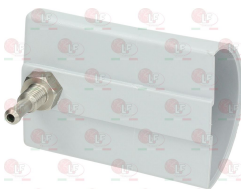
**3060069 HEXAGONAL NUT M8 MEDIUM**  
stainless steel - UNI 5588 - DIN 934 - ISO 4032



DIHR 11702

DIHR 11708

**3060067 AIR CHAMBER 55x31x75 mm**  
hose end fitting  $\varnothing$  6 mm



DIHR 10911/B

DIHR 135911/B

**3060070 GASKET 14x8x1.5 mm**



DIHR 13301



Suitable for:

**3060069 HEXAGONAL NUT M8 MEDIUM**  
stainless steel - UNI 5588 - DIN 934 - ISO 4032



DIHR 11702

DIHR 11708

## DIHR

Suitable for:



**3060068 AIR CHAMBER 55x31x90 mm**  
hose end fitting  $\varnothing$  6 mm



DIHR 10401  
DIHR 135911

DIHR 10402

DIHR 10911

**3060070 GASKET 14x8x1.5 mm**



DIHR 13301

**3060069 HEXAGONAL NUT M8 MEDIUM**  
stainless steel - UNI 5588 - DIN 934 - ISO 4032



DIHR 11702

DIHR 11708

## Axial motor fans

**5017087 MOTOR FAN A2D250-AA02-75  $\varnothing$  250 mm**  
230/400V 50/60 Hz 115/150W 0.2/0.24A



DIHR 3000310/A

## Ball valves and accessories

**3526703 BALL VALVE  $\varnothing$  1/2"FF**



DIHR 3002140



Suitable for:

DIHR



Suitable for:

## Bearings

**3063118 BEARING 6002 DDU NSK**  
external  $\varnothing$  32mm - internal  $\varnothing$  15mm - thickness 9mm



DIHR 10800010

**3063034 LIFTING BEARING**



DIHR 10800048

## Boilers

**3024072 BOILER  $\varnothing$  110x370 mm**



DIHR 140905

**3024041 BOILER  $\varnothing$  112x320 mm**



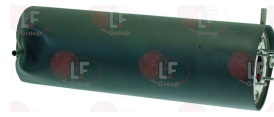
DIHR 135905

**3024038 COMPLETE BOILER  $\varnothing$  140x390 mm**



DIHR 150905

**3024036 COMPLETE BOILER  $\varnothing$  160x505 mm**



DIHR 22002

## Bushings

**5013886 ROLL BUSHING**  
for DISHWASHER KROMO K100



DIHR 10800231

**5023385 WASHER SLIDING 16x10x8 mm**



DIHR 13330

## Caps

**5023357 CAP CHROME-PLATED BRASS 1/8"**



DIHR 12002



## Castors, rollers and accessories

3391069 BASKET WHEEL



DIHR 89919

3346138 BELT WHEEL  $\varnothing$  29.5 mm



DIHR 3060001

3053593 COVER TIE ROD ROLLER  
internal  $\varnothing$  11 mm



DIHR 11600014

5018135 ROLL ECCENTRIC CONVEYOR  $\varnothing$  30x27x12 mm



DIHR 3003012

3346144 SHUTTER ROLLER  $\varnothing$  34x12 mm



DIHR 10800244

3346011 TROLLEY SPACER ROLLER  
 $\varnothing$  24x22 mm



DIHR 3003026

## Clamps

3449465 HOSE CLAMP 30-45  
for pipes  $\varnothing$  30÷45 mm  
made of stainless steel AISI 304  
height 9 mm and screw E7  
suitable for food industry



DIHR 11809

3449456 HOSE CLAMP 50-70  
for pipes  $\varnothing$  50÷70 mm  
made of stainless steel AISI 304  
height 9 mm and screw E7  
suitable for food industry



DIHR 11824

3449475 HOSE CLAMP 60-80  
for pipes  $\varnothing$  60÷80 mm  
made of stainless steel AISI 304  
height 12 mm and screw E7  
suitable for food industry



DIHR 2902491

3449458 HOSE CLAMP 80-100  
for pipes  $\varnothing$  80÷100 mm  
made of stainless steel AISI 304  
height 9 mm and screw E7  
suitable for food industry



DIHR 11837



Suitable for:

# DIHR



Suitable for:

## Contact thermostats

**3444283 CONTACT THERMOSTAT +110°C**  
boiler security  
with manual reset - 10A 250V



DIHR 15550

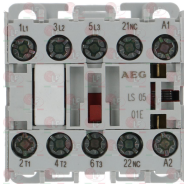
**3444214 CONTACT THERMOSTAT 55°C**  
15A 250V



DIHR 15551

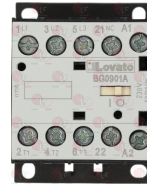
## Contactors

**3351209 CONTACTOR AEG LS05 9A 230V 4Kw**  
coil 230V 50/60Hz  
3 normally open contacts  
1 normally closed auxiliary contact



DIHR 15086/B

**3446557 CONTACTOR LOVATO BG0901A**  
coil 9A 230V 50/60Hz 4Kw  
3 normally open contacts  
1 normally closed auxiliary contact



DIHR 10300392

**3397402 MOTOR PROTECTION SWITCH AEG Mbs25**  
50/60Hz - 1.1Kw  
1.6÷2.5A  
3 NO contacts



DIHR 2000393

**3397405 MOTOR PROTECTION SWITCH AEG Mbs25**  
50/60Hz - 1.5Kw  
2.5÷4A  
3 NO contacts



DIHR 2000394

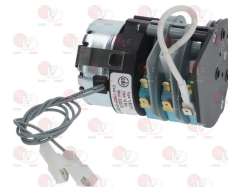
## Controllers and changeover switches

**3322148 CONTROLLER 11803F1 3 CAMS**  
120 seconds cycle  
230V 50/60Hz



DIHR 10708

**3322232 CONTROLLER 11803F1 3 CAMS**  
18 minutes cycle  
230V 50/60Hz  
without pin  
for regeneration



DIHR 16064/A

**3322178 CONTROLLER 11804F1 4 CAMS**  
 120 seconds cycle  
 230V 50/60Hz  
 with thermostop



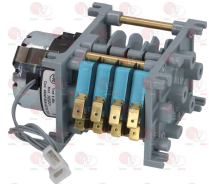
DIHR 10708/T

**3322346 CONTROLLER 11804F1 4 CAMS**  
 90 seconds cycle  
 230V 50Hz  
 with thermostop



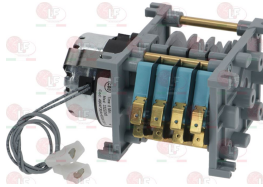
DIHR 10708/N

**3322231 CONTROLLER 4904F3 4 CAMS**  
 1st cycle 60 seconds  
 2nd cycle 90 seconds  
 3rd cycle 120 seconds  
 230V 50Hz  
 without pin



DIHR 10300117

**3322265 CONTROLLER 4904F3 4 CAMS**  
 1st cycle 60 seconds  
 2nd cycle 120 seconds  
 3rd cycle 180 seconds  
 230V 50/60Hz  
 anticlockwise rotation



DIHR 10300121

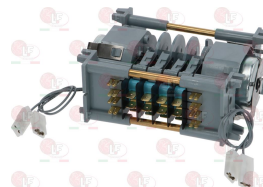
**3322195 CONTROLLER 600/627/5309 2 CAMS**  
 120 seconds cycle  
 230V 50/60Hz



DIHR 10708

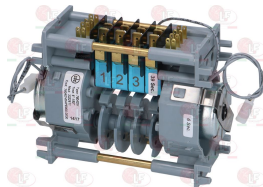
DIHR 10708/L

**3322177 CONTROLLER 7804DV 4 CAMS**  
 1st cycle 120 seconds  
 2nd cycle 180 seconds  
 230V 50/60Hz  
 2 motors



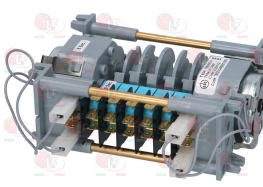
DIHR 30001027

**3322611 CONTROLLER 7804DV 4 CAMS**  
 1st cycle 6 seconds  
 2nd cycle 180 seconds  
 230V 50/60Hz  
 3 motors



DIHR 30001028

**3322172 CONTROLLER 7805DV 5 CAMS**  
 1st cycle 120 seconds  
 2nd cycle 240 seconds  
 230V 50Hz  
 without pin

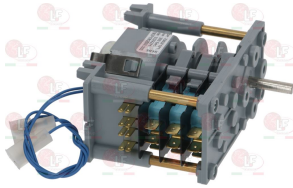


DIHR 22011



Suitable for:

**3322271 CONTROLLER 7903F1 3 CAMS**  
5 minutes cycle  
230V 50/60Hz  
clockwise rotation  
D-shaped pin ø 6x4.6 mm



DIHR 22001

# DIHR



Suitable for:

**5018216 TIMER 4904F3 4 CAMS**  
230V 50/60Hz  
1° cycle 50 sec.  
2° cycle 100 sec.  
3° cycle 150 sec.



DIHR 10300122

## Curtains

**3456020 ROD FOR CURTAIN**



DIHR 3009109

**3443321 SIDE CURTAIN 545x585 mm**



DIHR 3004050

**3443322 CENTRAL CURTAIN 615x495 mm**



DIHR 3004051

DIHR 3071072

**3443326 CURTAIN ROD 600 mm**



DIHR 3004053

## Door catches

**3398036 DOOR CATCH WITH MICROSWITCH**



DIHR 150402

**3398037 DOOR RETAINER**



DIHR 150402/D



Suitable for:

Suitable for:

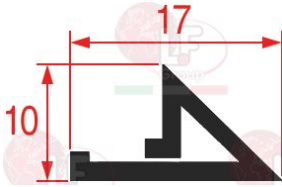
**3398035 NICKEL PLATED DOOR CATCH  $\varnothing$  13x24 mm**  
for DISHWASHER all models



DIHR 10775

## Door gaskets for dishwashers

**7100611 DOOR GASKET SILICONE 1000 mm**  
profile dimensions 17x10 mm



DIHR 135205

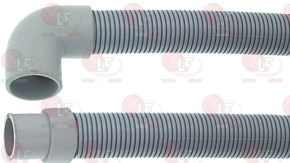
**3187013 DOOR GASKET 1500 mm**  
profile dimensions 24x10x6 mm



DIHR 560021

## Drain hoses

**3450026 DRAIN HOSE  $\varnothing$  28x1500 mm**  
elbow hose internal  $\varnothing$  28 mm external  $\varnothing$  33 mm  
straight hose internal  $\varnothing$  24 mm external  $\varnothing$  28 mm  
max temperature 90°C



DIHR 15721

DIHR 25031

**3450028 DRAIN HOSE  $\varnothing$  29x1500 mm**  
muffs internal  $\varnothing$  24 and 28 mm  
max temperature 90°C



DIHR 10200112

DIHR 10727

**3450120 DRAIN HOSE  $\varnothing$  38x1500 mm**  
elbow hose internal  $\varnothing$  40 mm  
straight hose internal  $\varnothing$  31 mm



DIHR 10729

## Drain plugs

**5050428 OVERFLOW PIPE  $\varnothing$  26x175 mm**



DIHR 25004

**3743629 OVERFLOW PIPE  $\varnothing$  26x210 mm**



DIHR 3004089



Suitable for:

# DIHR



**3448137** OVERFLOW PIPE  $\varnothing$  28x106 mm  
in plastic



DIHR 16052

**3316041** GASKET 1"  $\varnothing$  44x32x3 mm



DIHR 13305

**3448138** OVERFLOW PIPE  $\varnothing$  28x121 mm  
in plastic



DIHR 150320

**3316041** GASKET 1"  $\varnothing$  44x32x3 mm



DIHR 13305

**3448136** OVERFLOW PIPE  $\varnothing$  28x132 mm  
in plastic



DIHR 15126

**3316041** GASKET 1"  $\varnothing$  44x32x3 mm



DIHR 13305

Suitable for:

**3316040** ELBOW CONNECTOR  $\varnothing$  1"x30 mm



DIHR 10701

**3316042** STAINLESS STEEL NUT  $\varnothing$  1"



DIHR 11701/A

**3316040** ELBOW CONNECTOR  $\varnothing$  1"x30 mm



DIHR 10701

**3316042** STAINLESS STEEL NUT  $\varnothing$  1"



DIHR 11701/A

**3316040** ELBOW CONNECTOR  $\varnothing$  1"x30 mm



DIHR 10701

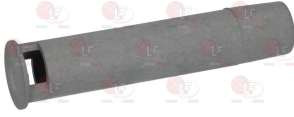
**3316042** STAINLESS STEEL NUT  $\varnothing$  1"



DIHR 11701/A

Suitable for:

**3448135 OVERFLOW PIPE  $\varnothing$  28x140 mm**  
in plastic



DIHR 1030005

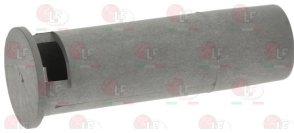
DIHR 10725

**3316041 GASKET 1"  $\varnothing$  44x32x3 mm**



DIHR 13305

**3448139 OVERFLOW PIPE  $\varnothing$  28x96 mm**  
in plastic



DIHR 135251

DIHR 135252

**3316041 GASKET 1"  $\varnothing$  44x32x3 mm**



DIHR 13305

**3448168 OVERFLOW PIPE  $\varnothing$  40x187 mm**  
made of plastic



DIHR 500618

**3448206 OVERFLOW PIPE  $\varnothing$  40x200 mm**  
in plastic



DIHR 540033

Suitable for:

**3316040 ELBOW CONNECTOR  $\varnothing$  1"x30 mm**



DIHR 10701

**3316042 STAINLESS STEEL NUT  $\varnothing$  1"**



DIHR 11701/A

**3316040 ELBOW CONNECTOR  $\varnothing$  1"x30 mm**



DIHR 10701

**3316042 STAINLESS STEEL NUT  $\varnothing$  1"**



DIHR 11701/A

**3186231 LIP SEAL DEM40 EPDM**  
 $\varnothing$  40x30x7 mm



DIHR 13021

**3186231 LIP SEAL DEM40 EPDM**  
 $\varnothing$  40x30x7 mm



DIHR 13021

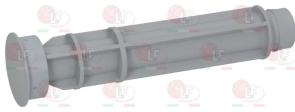


# DIHR



Suitable for:

**3448199 OVERFLOW PIPE  $\varnothing$  40x210 mm**  
made of plastic for drain pump



DIHR 560020

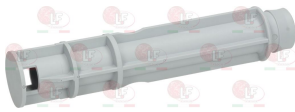
Suitable for:

**3186231 LIP SEAL DEM40 EPDM**  
 $\varnothing$  40x30x7 mm



DIHR 13021

**3448207 OVERFLOW PIPE  $\varnothing$  40x210 mm**  
in plastic



DIHR 500619

**3186231 LIP SEAL DEM40 EPDM**  
 $\varnothing$  40x30x7 mm



DIHR 13021

**3448231 OVERFLOW PIPE  $\varnothing$  40x400 mm**



DIHR 11600012

DIHR 11600102

**3186231 LIP SEAL DEM40 EPDM**  
 $\varnothing$  40x30x7 mm



DIHR 13021

**3448296 OVERFLOW PIPE  $\varnothing$  45x155 mm**  
s/steel



DIHR 75250

DIHR 75752

**3316045 DRAIN ASSEMBLY COMPLETE  $\varnothing$  2"x1"1/4**  
fitting  $\varnothing$  2"  
outlet  $\varnothing$  1"1/4  
complete with nut and gasket



DIHR 10200113

DIHR 10200114

DIHR 10200173/A

**3316072 ELBOW STEM FOR OUTLET  $\varnothing$  1"1/4**  
complete with gasket



DIHR 15613

**3316155 GASKET 75x58x3 mm**



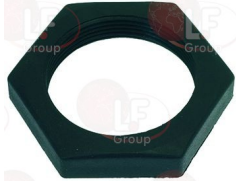
DIHR 10200173/A

DIHR 10600013



Suitable for:

**3316153 NUT FOR DRAIN ASSEMBLY**  
threaded hole internal  $\varnothing$  60 mm



DIHR 10200114

**3448305 OVERFLOW PIPE  $\varnothing$  45x170 mm**  
basis  $\varnothing$  external 42 mm



DIHR 22251

**3448141 OVERFLOW PIPE  $\varnothing$  45x200 mm**  
in stainless steel



DIHR 10600019

**3316072 ELBOW STEM FOR OUTLET  $\varnothing$  1"1/4**  
complete with gasket



DIHR 15613

**3316153 NUT FOR DRAIN ASSEMBLY**  
threaded hole internal  $\varnothing$  60 mm



DIHR 10200114

# DIHR

Suitable for:



**3316045 DRAIN ASSEMBLY COMPLETE  $\varnothing$  2"x1"1/4**  
fitting  $\varnothing$  2"  
outlet  $\varnothing$  1"1/4  
complete with nut and gasket



DIHR 10200113

DIHR 10200114

DIHR 10200173/A

**3316155 GASKET 75x58x3 mm**



DIHR 10200173/A

DIHR 10600013



Suitable for:

DIHR



**3448295** OVERFLOW PIPE  $\varnothing$  45x463 mm  
for wash tank



DIHR 3004101

Suitable for:

**3448297** OVERFLOW CAP



DIHR 88105

**3448294** OVERFLOW PIPE  $\varnothing$  45x483 mm  
for pre-wash tank



DIHR 3004100

**3448297** OVERFLOW CAP



DIHR 88105

**3448293** OVERFLOW PIPE  $\varnothing$  45x580 mm



DIHR 89000

**3186579** GASKET FLANGE-SHAPED  $\varnothing$  96x56x13 mm



DIHR 1160002

**5017671** OVERFLOW PIPE END  $\varnothing$  40x52 mm  
interno  $\varnothing$  32 mm



DIHR 1160019

## Drain pumps

**3122865** DRAIN PUMP PLASET 59491  
22W 220/240V 50Hz  
inlet  $\varnothing$  external 30 mm  
exit  $\varnothing$  external 22 mm



DIHR 15101



## Drain pumps

**3122455 DRAIN PUMP 25W 220/240V 50Hz**  
inlet external  $\varnothing$  22 mm - outlet external  $\varnothing$  30 mm



DIHR 15101/A

DIHR 15101/A+15101/F

DIHR 15101/F

**3122413 PUMP HOUSING**  
inlet external  $\varnothing$  22 mm - outlet external  $\varnothing$  30 mm



DIHR 15101/F

## Electric pumps

**3122701 ELECTRIC PUMP AP DH122660 2HP**  
inlet external  $\varnothing$  63 mm - outlet external  $\varnothing$  50 mm  
2HP 230/400V 50Hz



DIHR

**3122024 SEAL MECHANICAL FOR SHAFT  $\varnothing$  12 mm**  
metal seal internal  $\varnothing$  11 mm -  $\varnothing$  external 24 mm  
height 15.5 mm  
back. element internal  $\varnothing$  14 mm -  $\varnothing$  external 26 mm  
height 8 mm



DIHR 10200055  
DIHR 15100/S

DIHR 15080  
DIHR 22046

DIHR 15080/E

**3122687 ELECTRIC PUMP AP 12250 1.50HP**  
inlet external  $\varnothing$  63 mm - outlet external  $\varnothing$  50 mm  
1.50HP 230/400V 50Hz



DIHR

**3122024 SEAL MECHANICAL FOR SHAFT  $\varnothing$  12 mm**  
metal seal internal  $\varnothing$  11 mm -  $\varnothing$  external 24 mm  
height 15.5 mm  
back. element internal  $\varnothing$  14 mm -  $\varnothing$  external 26 mm  
height 8 mm



DIHR 10200055  
DIHR 15100/S

DIHR 15080  
DIHR 22046

DIHR 15080/E

**3122559 ELECTRIC PUMP AP 2011 2HP**  
inlet external  $\varnothing$  63 mm - outlet external  $\varnothing$  54 mm  
2HP 230/400V 50Hz 5.8/3.4A - Rpm 2850



DIHR

**3122024 SEAL MECHANICAL FOR SHAFT  $\varnothing$  12 mm**  
metal seal internal  $\varnothing$  11 mm -  $\varnothing$  external 24 mm  
height 15.5 mm  
back. element internal  $\varnothing$  14 mm -  $\varnothing$  external 26 mm  
height 8 mm



DIHR 10200055  
DIHR 15100/S

DIHR 15080  
DIHR 22046

DIHR 15080/E

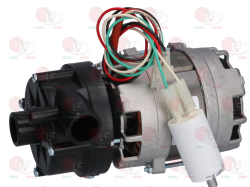


Suitable for:

# DIHR



**3122500 ELECTRIC PUMP AP 902SX 0.10HP**  
 inlet external  $\varnothing$  28 mm - outlet external  $\varnothing$  28 mm  
 0.10HP 230V 50Hz 1.1A - Rpm 2600  
 capacitor 6.3  $\mu$ f - flow rate 80 L/min



DIHR

Suitable for:  
**1186237 O-RING 03300 EPDM**  
 ring thickness 2.62 mm - internal  $\varnothing$  75.87 mm



DIHR 135502

**3122245 ELECTRIC PUMP FIR 1205DX 2.70HP**  
 inlet external  $\varnothing$  63 mm - outlet external  $\varnothing$  54 mm  
 2.70HP 220/400V 6.2/3.4A 50Hz - Rpm 2800  
 flow rate 600 L/min



DIHR 88106

DIHR 88106/A

**3122026 PUMP HOUSING GASKET FIR**



DIHR 10200290

DIHR 22044

**3122024 SEAL MECHANICAL FOR SHAFT  $\varnothing$  12 mm**  
 metal seal internal  $\varnothing$  11 mm -  $\varnothing$  external 24 mm  
 height 15.5 mm  
 back. element internal  $\varnothing$  14 mm -  $\varnothing$  external 26 mm  
 height 8 mm



DIHR 10200055

DIHR 15080

DIHR 15080/E

DIHR 15100/S

DIHR 22046

**3122033 ELECTRIC PUMP FIR 1225SX 1.50HP**  
 inlet external  $\varnothing$  63 mm - outlet external  $\varnothing$  48 mm  
 1.50HP 220/400V 50Hz 4.8/2.8A - Rpm 2800  
 flow rate 625 L/min



DIHR 10300057

**3122026 PUMP HOUSING GASKET FIR**



DIHR 10200290

DIHR 22044





Suitable for:

**3122024 SEAL MECHANICAL FOR SHAFT  $\varnothing$  12 mm**  
metal seal internal  $\varnothing$  11 mm -  $\varnothing$  external 24 mm  
height 15.5 mm  
back. element internal  $\varnothing$  14 mm -  $\varnothing$  external 26 mm  
height 8 mm



DIHR 1020055  
DIHR 15100/S

DIHR 15080  
DIHR 22046

DIHR 15080/E

## DIHR



Suitable for:

**3122180 ELECTRIC PUMP FIR 1226SX 2HP**  
inlet external  $\varnothing$  63 mm - outlet external  $\varnothing$  48 mm  
2HP 220/400V 50Hz - Rpm 2850



DIHR 22037

**3122211 IMPELLER FIR  $\varnothing$  118 mm**  
for models 1226/1227SX



DIHR DW22045/O

DIHR 22045

DIHR 22045/O

**3122026 PUMP HOUSING GASKET FIR**



DIHR 10200290

DIHR 22044

**3122024 SEAL MECHANICAL FOR SHAFT  $\varnothing$  12 mm**  
metal seal internal  $\varnothing$  11 mm -  $\varnothing$  external 24 mm  
height 15.5 mm  
back. element internal  $\varnothing$  14 mm -  $\varnothing$  external 26 mm  
height 8 mm



DIHR 1020055  
DIHR 15100/S

DIHR 15080  
DIHR 22046

DIHR 15080/E

**3122038 ELECTRIC PUMP FIR 2212SX 0.10HP**  
inlet external  $\varnothing$  28 mm - outlet external  $\varnothing$  28 mm  
0.10HP 230V 50Hz 1.1A - rpm 2700  
capacitor 5  $\mu$ f - flow rate 80 L/min



DIHR 10501/A

**3068096 CAPACITOR ELECTRICAL 5 $\mu$ F**  
450V 50/60Hz -  $\varnothing$  30xh51 mm



DIHR 10702



Suitable for:

# DIHR



Suitable for:

**3122395 ELECTRIC PUMP FIR 2233/X1SX 0.75HP**  
 inlet external  $\varnothing$  60 mm - outlet external  $\varnothing$  50 mm  
 additional outlet external  $\varnothing$  30 mm  
 0.75HP 230V 50Hz - rpm 2700  
 capacitor 12.5  $\mu$ F



DIHR 15908/A

**3068019 CAPACITOR DUCATI ENERGIA 12,5 $\mu$ F**  
 450V 50/60Hz  
 operating temperature -25 +85°C  
 lead connection 6.35x0.8 mm  
 $\varnothing$  36x70 mm



DIHR 15081

**3068081 CAPACITOR ELECTRICAL 12.5 $\mu$ F**  
 450V 50/60Hz -  $\varnothing$  35x71 mm



DIHR 15081

**3122058 SEAL MECHANICAL FOR SHAFT  $\varnothing$  11 mm**  
 metal seal internal  $\varnothing$  10 mm -  $\varnothing$  external 24 mm  
 height 13.5 mm  
 back. element internal  $\varnothing$  14 mm -  $\varnothing$  external 26 mm  
 height 8 mm



DIHR 15080/C

**3122719 ELECTRIC PUMP FIR 2275SX 3.60HP**  
 inlet external  $\varnothing$  63 mm - outlet external  $\varnothing$  63 mm  
 3.60HP 220/400V 50Hz 10/5.8A - Rpm 2800



DIHR DW80912

DIHR 80912

**3122174 IMPELLER FIR  $\varnothing$  135 mm**  
 for models 2250/2275SX



DIHR 80912/A

**3453026 MECHANICAL SEAL FOR SHAFT  $\varnothing$  17 mm**  
 metal seal internal  $\varnothing$  16 mm - external  $\varnothing$  39 mm  
 height 15 mm  
 back. element internal  $\varnothing$  21 mm - external  $\varnothing$  42 mm  
 height 8 mm  
 for electropumps FIR models 2274 e 2275



DIHR 80912/B

**3122660 PUMP HOUSING FIR 2250/2274/2275LH**  
 inlet external  $\varnothing$  63 mm - outlet external  $\varnothing$  63 mm



DIHR 80912/C

**3786468 PUMP HOUSING GASKET FIR 2275 3.6HP**



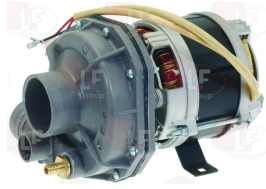
DIHR 80912/D

**3122774** **ELECTRIC PUMP FIR 4213DX 0.25HP**  
 inlet external  $\varnothing$  28 mm - outlet external  $\varnothing$  28 mm  
 0.25HP 230V 50Hz - Rpm 2800  
 capacitor 6.3  $\mu$ F



DIHR 10508

**5018227** **ELECTRIC PUMP FIR 4233SX 1HP**  
 inlet external  $\varnothing$  60 mm - outlet external  $\varnothing$  50 mm  
 additional outlet external  $\varnothing$  30 mm  
 hose end fitting  $\varnothing$  10 mm  
 0.74kW 230V 50Hz - rpm 2800  
 capacitor 16  $\mu$ F



DIHR 15908/D

**3786491** **GASKET FOR PUMP FIR 2233/4233SX**



DIHR 15079/D

**3122058** **SEAL MECHANICAL FOR SHAFT  $\varnothing$  11 mm**  
 metal seal internal  $\varnothing$  10 mm -  $\varnothing$  external 24 mm  
 height 13.5 mm  
 back. element internal  $\varnothing$  14 mm -  $\varnothing$  external 26 mm  
 height 8 mm



DIHR 15080/C

**3068024** **CAPACITOR DUCATI ENERGIA 16 $\mu$ F**  
 450V 50/60Hz  
 operating temperature -25 +85°C  
 lead connector 6.35x0.8 mm  
 $\varnothing$  36xh70 mm



DIHR 15081/A

**3122676** **PUMP HOUSING FIR 2233/4233SX**  
 inlet external  $\varnothing$  60 mm - outlet external  $\varnothing$  50 mm  
 additional outlet external  $\varnothing$  30 mm  
 hose end fitting  $\varnothing$  10 mm



DIHR 12524

DIHR 15031/E

DIHR 15031/E+12524



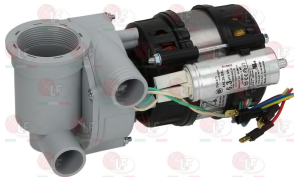
Suitable for:

# DIHR



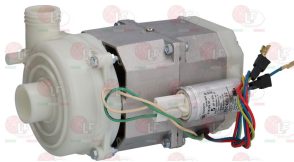
Suitable for:

**7102489 ELECTRIC PUMP OP L63.T19 0.25HP**  
 inlet  $\varnothing$  1"1/2F - outlet external  $\varnothing$  30 mm  
 additional outlet external  $\varnothing$  28 mm  
 closed rear hose end fitting external  $\varnothing$  10.5 mm  
 0.19kW 230V 50Hz - capacitor 6.3 $\mu$ F



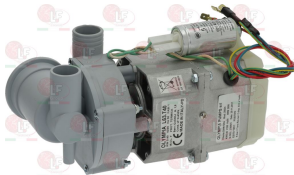
DIHR 25021

**3122751 ELECTRIC PUMP OP L63.T20SX 0.27HP**  
 inlet external  $\varnothing$  33 mm - outlet external  $\varnothing$  32 mm  
 0.20kW 230V 50Hz 1.1A - capacitor 5  $\mu$ f



DIHR 10501/C

**5051901 ELECTRIC PUMP OP L63.T40 0.55HP**  
 inlet  $\varnothing$  1"1/2F - outlet external  $\varnothing$  30 mm  
 additional outlet external  $\varnothing$  28 mm  
 closed rear hose end fitting external  $\varnothing$  10.5 mm  
 0.40kW 230V 50Hz - rpm 2800  
 capacitor 5  $\mu$ f



DIHR DW25024

DIHR 25024

**3068096 CAPACITOR ELECTRICAL 5 $\mu$ F**  
 450V 50/60Hz -  $\varnothing$  30xh51 mm



DIHR 10702

**3068008 CAPACITOR DUCATI ENERGIA 5 $\mu$ F**  
 450V 50/60Hz  
 operating temperature -25 +85°C  
 lead connection 6.35x0.8 mm  
 $\varnothing$  28xh55 mm



DIHR 10702

**3068008 CAPACITOR DUCATI ENERGIA 5 $\mu$ F**  
 450V 50/60Hz  
 operating temperature -25 +85°C  
 lead connection 6.35x0.8 mm  
 $\varnothing$  28xh55 mm



DIHR 10702

**3122024 SEAL MECHANICAL FOR SHAFT  $\varnothing$  12 mm**  
 metal seal internal  $\varnothing$  11 mm -  $\varnothing$  external 24 mm  
 height 15.5 mm  
 back. element internal  $\varnothing$  14 mm -  $\varnothing$  external 26 mm  
 height 8 mm



DIHR 10200055

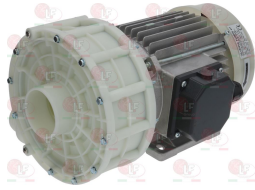
DIHR 15100/S

DIHR 15080

DIHR 22046

DIHR 15080/E

**3122480 ELECTRIC PUMP OP MEC80.T200SX 2HP**  
 inlet external  $\varnothing$  63 mm - outlet external  $\varnothing$  50 mm  
 2HP 220/240/380/415V 50Hz - Rpm 2850



DIHR 10300057/A

DIHR 22037

**3122024 SEAL MECHANICAL FOR SHAFT  $\varnothing$  12 mm**  
 metal seal internal  $\varnothing$  11 mm -  $\varnothing$  external 24 mm  
 height 15.5 mm  
 back. element internal  $\varnothing$  14 mm -  $\varnothing$  external 26 mm  
 height 8 mm

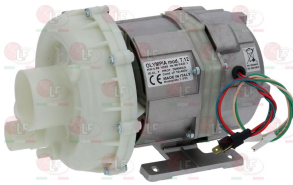


DIHR 10200055  
 DIHR 15100/S

DIHR 15080  
 DIHR 22046

DIHR 15080/E

**3122279 ELECTRIC PUMP OP T.12 1.20HP**  
 inlet external  $\varnothing$  60 mm - outlet external  $\varnothing$  50 mm  
 additional outlet  $\varnothing$  30 mm  
 0.88kW 230V 50Hz - Rpm 2700  
 capacitor 16  $\mu$ f



DIHR 15913

**3068083 CAPACITOR ELECTRICAL 16 $\mu$ F**  
 450V 50/60Hz -  $\varnothing$  35xh71 mm



DIHR 15081/A

**3186239 O-RING 02525 EPDM**  
 ring thickness 1.78 mm - internal  $\varnothing$  133.07 mm



DIHR 15080/A

**3068024 CAPACITOR DUCATI ENERGIA 16 $\mu$ F**  
 450V 50/60Hz  
 operating temperature -25 +85°C  
 lead connector 6.35x0.8 mm  
 $\varnothing$  36xh70 mm



DIHR 15081/A

**3122746 IMPELLER CLOSED OP  $\varnothing$  91 mm**  
 for models T.7 - T.12



DIHR 15079/F

**3122371 PUMP HOUSING OP T.12/15/75**  
 inlet external  $\varnothing$  60 mm - outlet external  $\varnothing$  50 mm  
 additional outlet external  $\varnothing$  30 mm



DIHR 15078



Suitable for:

**3122024 SEAL MECHANICAL FOR SHAFT  $\varnothing$  12 mm**  
metal seal internal  $\varnothing$  11 mm -  $\varnothing$  external 24 mm  
height 15.5 mm  
back. element internal  $\varnothing$  14 mm -  $\varnothing$  external 26 mm  
height 8 mm



DIHR 1020055  
DIHR 15100/S

DIHR 15080  
DIHR 22046

DIHR 15080/E

## DIHR



Suitable for:

**3122366 ELECTRIC PUMP OP T.15 1.50HP**  
inlet external  $\varnothing$  60 mm - outlet external  $\varnothing$  50 mm  
additional outlet  $\varnothing$  30 mm  
1.10kW 230V 50Hz - Rpm 2700  
capacitor 16 $\mu$ f



DIHR 0022009

DIHR 22009

**3068083 CAPACITOR ELECTRICAL 16 $\mu$ F**  
450V 50/60Hz -  $\varnothing$  35xh71 mm



DIHR 15081/A

**3186239 O-RING 02525 EPDM**  
ring thickness 1.78 mm - internal  $\varnothing$  133.07 mm



DIHR 15080/A

**3068024 CAPACITOR DUCATI ENERGIA 16 $\mu$ F**  
450V 50/60Hz  
operating temperature -25 +85°C  
lead connector 6.35x0.8 mm  
 $\varnothing$  36xh70 mm



DIHR 15081/A

**3122372 IMPELLER OP  $\varnothing$  102 mm**  
for models T.6 T.15



DIHR 22009/A

**3122371 PUMP HOUSING OP T.12/15/75**  
inlet external  $\varnothing$  60 mm - outlet external  $\varnothing$  50 mm  
additional outlet external  $\varnothing$  30 mm



DIHR 15078

**3122024 SEAL MECHANICAL FOR SHAFT  $\varnothing$  12 mm**  
 metal seal internal  $\varnothing$  11 mm -  $\varnothing$  external 24 mm  
 height 15.5 mm  
 back. element internal  $\varnothing$  14 mm -  $\varnothing$  external 26 mm  
 height 8 mm



DIHR 1020055  
 DIHR 15100/S

DIHR 15080  
 DIHR 22046

DIHR 15080/E

## DIHR



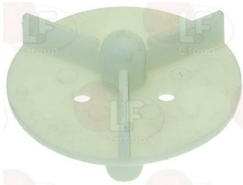
Suitable for:

**3122304 ELECTRIC PUMP OP T.19 0.25HP**  
 inlet external  $\varnothing$  28 mm - outlet external  $\varnothing$  28 mm  
 0.25HP 230V 50Hz 1.1A - Rpm 2750  
 capacitor 5 $\mu$ f



DIHR 10501/A

**3122733 IMPELLER OP T.19  $\varnothing$  63 mm**



DIHR 10504

**1186237 O-RING 03300 EPDM**  
 ring thickness 2.62 mm - internal  $\varnothing$  75.87 mm



DIHR 135502

**3068008 CAPACITOR DUCATI ENERGIA 5 $\mu$ F**  
 450V 50/60Hz  
 operating temperature -25 +85°C  
 lead connection 6.35x0.8 mm  
 $\varnothing$  28xh55 mm



DIHR 10702

**3453029 MECHANICAL SEAL FOR SHAFT  $\varnothing$  11 mm**  
 metal seal internal  $\varnothing$  10 mm - external  $\varnothing$  24 mm  
 height 14 mm  
 rotatory seal internal  $\varnothing$  13 mm - external  $\varnothing$  26 mm  
 height 5.5 mm



DIHR 10505

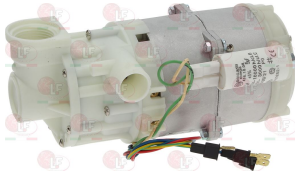


Suitable for:

# DIHR



**3122259 ELECTRIC PUMP OP T.33 0.30HP**  
threaded inlet  $\varnothing$  1" F - outlet external  $\varnothing$  28 mm  
0.30HP 230V 50Hz 1.4A - Rpm 2700  
capacitor 5 $\mu$ F



DIHR 135501

**3068096 CAPACITOR ELECTRICAL 5 $\mu$ F**  
450V 50/60Hz -  $\varnothing$  30xh51 mm



DIHR 10702

**3122385 IMPELLER CLOSED OP  $\varnothing$  74 mm**  
for models T.33



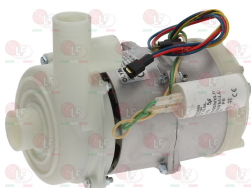
DIHR 135505

**3122735 PUMP HOUSING OP T.33 0.33HP**  
outlet external  $\varnothing$  28 mm



DIHR 135504

**3122263 ELECTRIC PUMP OP T.33 0.30HP**  
inlet external  $\varnothing$  33 mm - outlet external  $\varnothing$  30 mm  
additional outlet external  $\varnothing$  28 mm  
0.30HP 230V 50Hz - Rpm 2700  
capacitor 5 $\mu$ F



DIHR 18242

Suitable for:

**3068008 CAPACITOR DUCATI ENERGIA 5 $\mu$ F**  
450V 50/60Hz  
operating temperature -25 +85°C  
lead connection 6.35x0.8 mm  
 $\varnothing$  28xh55 mm



DIHR 10702

**3122736 HOUSING PUMP LID OP T.33 0.33HP**  
threaded inlet  $\varnothing$  1" F



DIHR 135503

**1186237 O-RING 03300 EPDM**  
ring thickness 2.62 mm - internal  $\varnothing$  75.87 mm



DIHR 135502

**3122024 SEAL MECHANICAL FOR SHAFT  $\varnothing$  12 mm**  
metal seal internal  $\varnothing$  11 mm -  $\varnothing$  external 24 mm  
height 15.5 mm  
back. element internal  $\varnothing$  14 mm -  $\varnothing$  external 26 mm  
height 8 mm



DIHR 10200055

DIHR 15100/S

DIHR 15080

DIHR 22046

DIHR 15080/E

**3068008 CAPACITOR DUCATI ENERGIA 5 $\mu$ F**  
450V 50/60Hz  
operating temperature -25 +85°C  
lead connection 6.35x0.8 mm  
 $\varnothing$  28xh55 mm



DIHR 10702





Suitable for:

**3068096 CAPACITOR ELECTRICAL 5µF**  
450V 50/60Hz - ø 30xh51 mm



DIHR 10702

**3186232 O-RING 02350 EPDM**  
ring thickness 1.78 mm - internal ø 88.62 mm



DIHR 18245

**3122024 SEAL MECHANICAL FOR SHAFT ø 12 mm**  
metal seal internal ø 11 mm - ø external 24 mm  
height 15.5 mm  
back. element internal ø 14 mm - ø external 26 mm  
height 8 mm



DIHR 10200055  
DIHR 15100/S

DIHR 15080  
DIHR 22046

DIHR 15080/E

**3122368 ELECTRIC PUMP OP T.33 0.30HP**  
inlet external ø 33 mm - outlet external ø 30 mm  
0.30HP 230V 50Hz - Rpm 2700  
capacitor 5µf



DIHR 18243

**3068096 CAPACITOR ELECTRICAL 5µF**  
450V 50/60Hz - ø 30xh51 mm



DIHR 10702

## DIHR

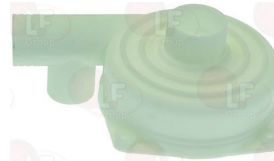
Suitable for:

**3122375 IMPELLER OP ø 80 mm**  
threaded coupling  
for models T.33 - T.45



DIHR 18246

**3122863 PUMP HOUSING OP T.33/T.45 2 OUTLET**  
inlet external ø 33 mm - outlet external ø 30 mm  
additional outlet external ø 28 mm



DIHR 18247



**3068008 CAPACITOR DUCATI ENERGIA 5µF**  
450V 50/60Hz  
operating temperature -25 +85°C  
lead connection 6.35x0.8 mm  
ø 28xh55 mm



DIHR 10702

**3122375 IMPELLER OP ø 80 mm**  
threaded coupling  
for models T.33 - T.45



DIHR 18246



Suitable for:

**3186232 O-RING 02350 EPDM**  
ring thickness 1.78 mm - internal  $\varnothing$  88.62 mm



DIHR 18245

**3122024 SEAL MECHANICAL FOR SHAFT  $\varnothing$  12 mm**  
metal seal internal  $\varnothing$  11 mm -  $\varnothing$  external 24 mm  
height 15.5 mm  
back. element internal  $\varnothing$  14 mm -  $\varnothing$  external 26 mm  
height 8 mm



DIHR 1020055

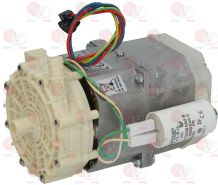
DIHR 15080

DIHR 15080/E

DIHR 15100/S

DIHR 22046

**3122741 ELECTRIC PUMP OP T.33 0.30HP**  
inlet external  $\varnothing$  15 mm - outlet external  $\varnothing$  15 mm  
0.30HP 230V 50Hz - Rpm 2700  
capacitor 8 $\mu$ f



DIHR 15100/DO

**3068079 CAPACITOR ELECTRICAL 8 $\mu$ F**  
450V 50/60Hz -  $\varnothing$  30xh71 mm



DIHR 16043

DIHR 18043/A

**3122861 PUMP HOUSING GASKET OP T.33**  
 $\varnothing$  76x1.5 mm



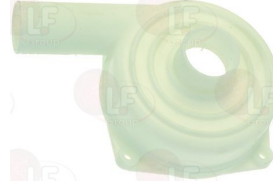
DIHR 15100/T

## DIHR



Suitable for:

**3122374 PUMP HOUSING OP T.33 1 OUTLET**  
inlet external  $\varnothing$  33 mm - outlet external  $\varnothing$  30 mm



DIHR 18248

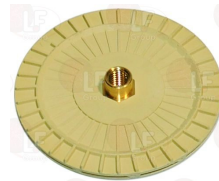
**3068014 CAPACITOR DUCATI ENERGIA 8 $\mu$ F**  
450V 50/60Hz  
operating temperature -25 +85°C  
lead connection 6.35x0.8 mm  
 $\varnothing$  32xh55 mm



DIHR 16043

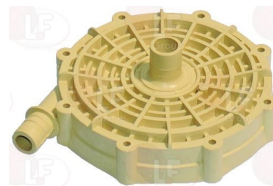
DIHR 18043/A

**7102012 IMPELLER OP T.33  $\varnothing$  90 mm**



DIHR 15100/U

**7102011 PUMP HOUSING OP T.33**  
inlet external  $\varnothing$  15 mm - outlet external  $\varnothing$  15 mm



DIHR 15100/V



Suitable for:

**3122024 SEAL MECHANICAL FOR SHAFT  $\varnothing$  12 mm**  
metal seal internal  $\varnothing$  11 mm -  $\varnothing$  external 24 mm  
height 15.5 mm  
back. element internal  $\varnothing$  14 mm -  $\varnothing$  external 26 mm  
height 8 mm



DIHR 10200055  
DIHR 15100/S

DIHR 15080  
DIHR 22046

DIHR 15080/E

## DIHR



Suitable for:

**3122284 ELECTRIC PUMP OP T.41 0.40HP**  
inlet external  $\varnothing$  29 mm - outlet external  $\varnothing$  28 mm  
0.29kW 230V 50Hz 1.8A - Rpm 2700  
capacitor 8  $\mu$ F - flow rate 165 L/min



DIHR 16042

**3122268 GASKET FOR PUMP HOUSING OP T.41/T.5**



DIHR 7130

**3122269 PUMP HOUSING OP T.4/T.41 0.40HP**  
inlet external  $\varnothing$  29 mm - outlet external  $\varnothing$  28 mm



DIHR 7133

**3068014 CAPACITOR DUCATI ENERGIA 8 $\mu$ F**  
450V 50/60Hz  
operating temperature -25 +85 $^{\circ}$ C  
lead connection 6.35x0.8 mm  
 $\varnothing$  32xh55 mm



DIHR 16043

DIHR 18043/A

**3122272 IMPELLER OP T.41 0.4HP  $\varnothing$  94 mm**



DIHR 7135

**3122024 SEAL MECHANICAL FOR SHAFT  $\varnothing$  12 mm**  
metal seal internal  $\varnothing$  11 mm -  $\varnothing$  external 24 mm  
height 15.5 mm  
back. element internal  $\varnothing$  14 mm -  $\varnothing$  external 26 mm  
height 8 mm



DIHR 10200055  
DIHR 15100/S

DIHR 15080  
DIHR 22046

DIHR 15080/E

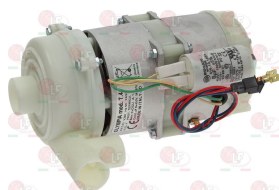


Suitable for:

# DIHR

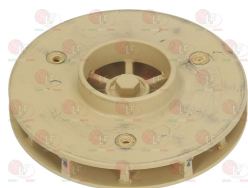


**3122276 ELECTRIC PUMP OP T.45 0.45HP**  
 inlet external  $\varnothing$  33 mm - outlet external  $\varnothing$  30 mm  
 additional outlet external  $\varnothing$  28 mm  
 0.45HP 230V 50Hz 1.8A - Rpm 2750  
 capacitor 8 $\mu$ f



DIHR 18300

**3122638 IMPELLER CLOSED OP  $\varnothing$  86 mm**  
 threaded connection  $\varnothing$  10 mm



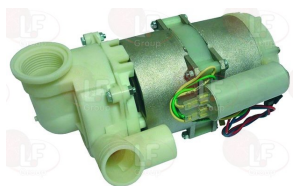
DIHR 18253

**3122863 PUMP HOUSING OP T.33/T.45 2 OUTLET**  
 inlet external  $\varnothing$  33 mm - outlet external  $\varnothing$  30 mm  
 additional outlet external  $\varnothing$  28 mm



DIHR 18247

**3122758 ELECTRIC PUMP OP T.45 0.45HP**  
 inlet  $\varnothing$  1" F - outlet external  $\varnothing$  30 mm  
 additional outlet external  $\varnothing$  30 mm  
 0.45HP 230V 50Hz - Rpm 2750  
 capacitor 10  $\mu$ f



DIHR 401402

**3122375 IMPELLER OP  $\varnothing$  80 mm**  
 threaded coupling  
 for models T.33 - T.45



DIHR 18246

Suitable for:

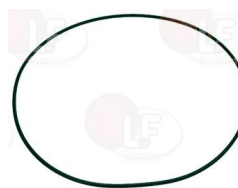
**3068014 CAPACITOR DUCATI ENERGIA 8 $\mu$ F**  
 450V 50/60Hz  
 operating temperature -25 +85°C  
 lead connection 6.35x0.8 mm  
 $\varnothing$  32xh55 mm



DIHR 18043

DIHR 18043/A

**3186232 O-RING 02350 EPDM**  
 ring thickness 1.78 mm - internal  $\varnothing$  88.62 mm



DIHR 18245

**3122024 SEAL MECHANICAL FOR SHAFT  $\varnothing$  12 mm**  
 metal seal internal  $\varnothing$  11 mm -  $\varnothing$  external 24 mm  
 height 15.5 mm  
 back. element internal  $\varnothing$  14 mm -  $\varnothing$  external 26 mm  
 height 8 mm



DIHR 10200055

DIHR 15080

DIHR 15080/E

DIHR 15100/S

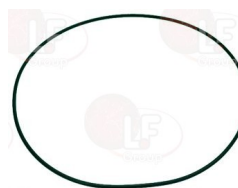
DIHR 22046

**3068016 CAPACITOR DUCATI ENERGIA 10 $\mu$ F**  
 450V 50/60Hz  
 operating temperature -25 +85°C  
 lead connector 6.35x0.8 mm  
 $\varnothing$  36xh58 mm



DIHR 18043

**3186232 O-RING 02350 EPDM**  
 ring thickness 1.78 mm - internal  $\varnothing$  88.62 mm



DIHR 18245

**3122024 SEAL MECHANICAL FOR SHAFT  $\varnothing$  12 mm**  
 metal seal internal  $\varnothing$  11 mm -  $\varnothing$  external 24 mm  
 height 15.5 mm  
 back. element internal  $\varnothing$  14 mm -  $\varnothing$  external 26 mm  
 height 8 mm



DIHR 1020055  
 DIHR 15100/S

DIHR 15080  
 DIHR 22046

DIHR 15080/E

## DIHR



Suitable for:

**3122278 ELECTRIC PUMP OP T.5 0.50HP**  
 inlet external  $\varnothing$  50 mm - outlet external  $\varnothing$  30 mm  
 additional outlet external  $\varnothing$  30 mm  
 0.35kW 230V 50Hz - Rpm 2700  
 capacitor 10  $\mu$ f



DIHR 16176

**3068080 CAPACITOR ELECTRICAL 10 $\mu$ F**  
 450V 50/60Hz -  $\varnothing$  30xh71 mm



DIHR 18043

**3122373 IMPELLER CLOSED OP  $\varnothing$  90 mm**  
 threaded coupling  
 for models T.5 - T.75



DIHR 15079

DIHR 15079/B

**3068016 CAPACITOR DUCATI ENERGIA 10 $\mu$ F**  
 450V 50/60Hz  
 operating temperature -25 +85°C  
 lead connector 6.35x0.8 mm  
 $\varnothing$  36xh58 mm



DIHR 18043

**3122268 GASKET FOR PUMP HOUSING OP T.41/T.5**



DIHR 7130

**5018196 PUMP HOUSING OP T.5/T.6/T.7**  
 inlet  $\varnothing$  external 50 mm - outlet  $\varnothing$  external 30 mm  
 additional outlet external  $\varnothing$  30 mm



DIHR 16182



Suitable for:

**3122024 SEAL MECHANICAL FOR SHAFT  $\varnothing$  12 mm**  
metal seal internal  $\varnothing$  11 mm -  $\varnothing$  external 24 mm  
height 15.5 mm  
back. element internal  $\varnothing$  14 mm -  $\varnothing$  external 26 mm  
height 8 mm



DIHR 10200055  
DIHR 15100/S

DIHR 15080  
DIHR 22046

DIHR 15080/E

# DIHR

Suitable for:



**3122265 ELECTRIC PUMP OPT.6 0.60HP**  
inlet external  $\varnothing$  50 mm - outlet external  $\varnothing$  30 mm  
additional outlet external  $\varnothing$  30 mm  
0.60HP 230V 50Hz - Rpm 2700  
capacitor 10  $\mu$ F



DIHR 26176

**3068080 CAPACITOR ELECTRICAL 10 $\mu$ F**  
450V 50/60Hz -  $\varnothing$  30xh71 mm



DIHR 18043

**3068016 CAPACITOR DUCATI ENERGIA 10 $\mu$ F**  
450V 50/60Hz  
operating temperature -25 +85°C  
lead connector 6.35x0.8 mm  
 $\varnothing$  36xh58 mm



DIHR 18043

**3122024 SEAL MECHANICAL FOR SHAFT  $\varnothing$  12 mm**  
metal seal internal  $\varnothing$  11 mm -  $\varnothing$  external 24 mm  
height 15.5 mm  
back. element internal  $\varnothing$  14 mm -  $\varnothing$  external 26 mm  
height 8 mm



DIHR 10200055  
DIHR 15100/S

DIHR 15080  
DIHR 22046

DIHR 15080/E

**3122264 ELECTRIC PUMP OPT.7 0.70HP**  
inlet external  $\varnothing$  50 mm - outlet external  $\varnothing$  30 mm  
additional outlet external  $\varnothing$  30 mm  
0.70HP 230V 50Hz 3.2A - Rpm 2750  
capacitor 12.5 $\mu$ F



DIHR 150914

**3068019 CAPACITOR DUCATI ENERGIA 12,5 $\mu$ F**  
450V 50/60Hz  
operating temperature -25 +85°C  
lead connection 6.35x0.8 mm  
 $\varnothing$  36xh70 mm



DIHR 15081



Suitable for:

**3068081 CAPACITOR ELECTRICAL 12.5µF**  
450V 50/60Hz - ø 35xh71 mm



DIHR 15081

**3122746 IMPELLER CLOSED OP ø 91 mm**  
for models T.7 - T.12



DIHR 15079/F

**3122024 SEAL MECHANICAL FOR SHAFT ø 12 mm**  
metal seal internal ø 11 mm - ø external 24 mm  
height 15.5 mm  
back. element internal ø 14 mm - ø external 26 mm  
height 8 mm

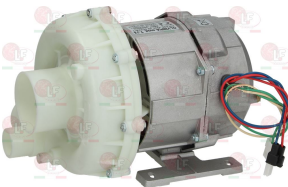


DIHR 10200055  
DIHR 15100/S

DIHR 15080  
DIHR 22046

DIHR 15080/E

**3122367 ELECTRIC PUMP OP T.75 0.75HP**  
inlet external ø 60 mm - outlet external ø 50 mm  
additional outlet external ø 30 mm  
0.55kW 230V 50Hz 3.2A - Rpm 2700  
capacitor 12.5 µf



DIHR 15908

**3068081 CAPACITOR ELECTRICAL 12.5µF**  
450V 50/60Hz - ø 35xh71 mm



DIHR 15081

## DIHR

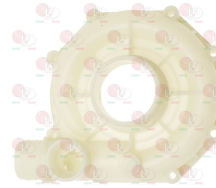
Suitable for:

**3122268 GASKET FOR PUMP HOUSING OPT.41/T.5**



DIHR 7130

**5018196 PUMP HOUSING OP T.5/T.6/T.7**  
inlet ø external 50 mm - outlet ø external 30 mm  
additional outlet external ø 30 mm



DIHR 16182



**3068019 CAPACITOR DUCATI ENERGIA 12,5µF**  
450V 50/60Hz  
operating temperature -25 +85°C  
lead connection 6.35x0.8 mm  
ø 36xh70 mm



DIHR 15081

**3122373 IMPELLER CLOSED OP ø 90 mm**  
threaded coupling  
for models T.5 - T.75



DIHR 15079

DIHR 15079/B



Suitable for:

**3186239 O-RING 02525 EPDM**  
ring thickness 1.78 mm - internal  $\varnothing$  133.07 mm



DIHR 15080/A

**3122024 SEAL MECHANICAL FOR SHAFT  $\varnothing$  12 mm**  
metal seal internal  $\varnothing$  11 mm -  $\varnothing$  external 24 mm  
height 15.5 mm  
back. element internal  $\varnothing$  14 mm -  $\varnothing$  external 26 mm  
height 8 mm



DIHR 10200055

DIHR 15100/S

DIHR 15080

DIHR 22046

DIHR 15080/E

## DIHR



Suitable for:

**3122371 PUMP HOUSING OP T.12/15/75**  
inlet external  $\varnothing$  60 mm - outlet external  $\varnothing$  50 mm  
additional outlet external  $\varnothing$  30 mm



DIHR 15078

## Electric pumps for pressure increase

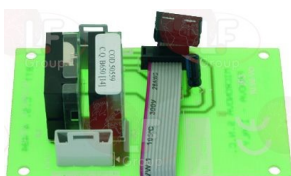
**3122737 ELECTRIC PUMP FIR B299RH 0.20HP**  
inlet  $\varnothing$  3/8"F - outlet  $\varnothing$  3/8"F  
0.20HP 230V 50Hz 1.5A - Rpm 2800  
capacitor 6.3  $\mu$ f  
for pressure increase



DIHR 15100/D

## Electronic boards

**3322333 ELECTRONIC TIMER BOARD**



DIHR DW50559

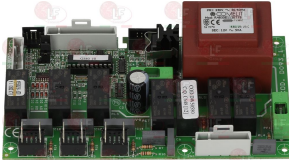
DIHR 50559





## Electronic boards

**3322334 ELECTRONIC TIMER BOARD**



DIHR 50580

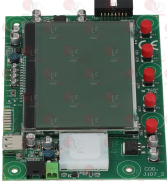
**3305156 FLAT CABLES 10 POLES 1000 mm**



DIHR 5058

DIHR 50589

**5059269 KEYBOARD WITH DISPLAY VERSION 09**  
dimensions 158x112 mm



DIHR 50650

**3319661 DIAPHRAGM PUSH BUTTON PANEL "ELITE"**



DIHR 50581

**7100296 CABLE FLAT 16-POLE 1000 m m**



DIHR 50651

**3390311 MOTHERBOARD WITHOUT CHIP**



DIHR DW50569

DIHR 50569

**3399131 PUSH BUTTON PANEL BOARD COMPLETE**  
with cable length 750 mm



DIHR 50570

**3319684 PUSH BUTTON PANEL BOARD COMPLETE**  
with cable length 1500 mm



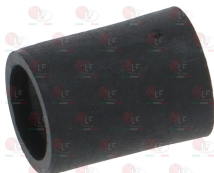
DIHR 50570/D

**3319687 PUSH BUTTON PANEL BOARD COMPLETE**  
with cable length 750 mm



DIHR 50570/C

**7106424 SPACER FOR CIRCUIT BOARDS**



DIHR 50561

**3390313 TIMER BOARD 50"-120"-180"**



DIHR DX50553

DIHR 50553/A



Suitable for:

DIHR



Suitable for:

**Feet**

**7101281 ADJUSTABLE BLACK FOOT**  
thread  $\varnothing$  17 mm - total height 50 mm  
hexagonal base for wrench of 24 mm  
height of the hexagonal base 20 mm



DIHR 10851

**3313119 ADJUSTABLE FOOT**  
thread  $\varnothing$  17,8 mm  
hexagonal base for wrench of 24 mm  
height of the hexagonal base 11 mm



DIHR 10850

**3313005 ADJUSTABLE S/STEEL FOOT  $\varnothing$  2" x h 135 mm**  
with fixed screw M12x40 mm  
adjustable height 135÷200 mm



DIHR 15116

**3313118 PLASTIC FOOT  $\varnothing$  37x13 mm**  
threaded pin M10x22



DIHR 10786

DIHR 10786+11711

DIHR 11711

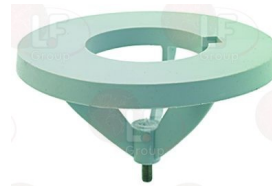
**Filters**

**3160157 FILTER OF STAINLESS STEEL  $\varnothing$  100x50 mm**



DIHR 16050

**3160172 WASH PUMP FILTER BASE - HOLE  $\varnothing$  50 mm**



DIHR 16051/A

**3160159 FILTER OF STAINLESS STEEL  $\varnothing$  195x55 mm**



DIHR 15911

DIHR 22218

**3160236 SUCTION FILTER**  
plastic made - external  $\varnothing$  155 mm - height 70 mm



DIHR 500616

**3186228 FLAT GASKET EPDM  $\varnothing$  95x75x3 mm**



DIHR 80208



Suitable for:

**3316154 INLET OUTLET UNIT**



DIHR 500603

**5062214 SUCTION FILTER FOR PUMP ø 118 mm**



DIHR 25003

**3160155 SUCTION FILTER FOR PUMP ø 50x85 mm**



DIHR 10914

**3160169 TANK FILTER ø 135x60 mm**



DIHR 500620

**3160170 FILTER BASE ø 74 mm**



DIHR 500615

DIHR 500615/A

**3160506 INTERNAL FILTER WITH SCREEN**



DIHR 500600

## DIHR

Suitable for:

**3160506 INTERNAL FILTER WITH SCREEN**



DIHR 500600

**5053762 RING NUT FILTER SUPPORT**  
flange ø 82 mm - threaded fitting ø 1"1/2



DIHR 25002

**3186229 ASPIRATION ASSEMBLY RING**



DIHR 500601

**3186228 FLAT GASKET EPDM ø 95x75x3 mm**



DIHR 80208

**3160171 MANIFOLD WITH LATERAL DRAIN RH**  
suction hose end fitting ø 56 mm  
drain tube hose end fitting ø 28 mm  
flange external ø 93 mm  
thread for ring nut ø 74 mm  
closed additional outlet external ø 11 mm



DIHR 500606





Suitable for:

**3160507 RING NUT WITH FILTER COUPLING**



DIHR 500607

# DIHR



Suitable for:

**3160166 TANK FILTER OF PLASTIC  $\varnothing$  95x64 mm  
new versions**



DIHR 540002

**3160167 DRAIN RING NUT  $\varnothing$  32 mm  
with extension**



DIHR 540000

DIHR 540000/A

**3160168 DRAIN RING NUT  $\varnothing$  32 mm  
without extension**



DIHR 540001

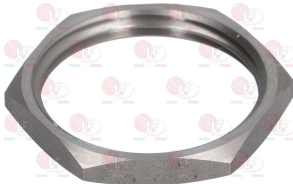
DIHR 540001/A

**3316041 GASKET 1"  $\varnothing$  44x32x3 mm**



DIHR 13305

**3316042 STAINLESS STEEL NUT  $\varnothing$  1"**



DIHR 11701/A

## Fittings

**1349158 FITTING  $\varnothing$  3/4"M-1/2"F REDUCED**



DIHR 12024

**3349346 NICHEL-PL.HOSE-END FITTING  $\varnothing$  1/4"M  $\varnothing$  12**



DIHR 12005

**3349337 NICHEL-PL.T-FITTING  $\varnothing$  1/4"F-1/4"F-1/4"F**



DIHR 12008

**3349324 NICHEL-PLATED FITTING  $\varnothing$  1/4"M-1/2"M**



DIHR 12033

Suitable for:

Suitable for:

**3349330 NICHEL-PLATED FITTING  $\phi$  1/4"M-1/8"F**



DIHR 12032

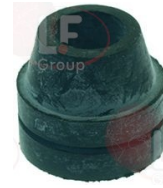
## Gaskets and seals

**3786704 GASKET FOR WASH HOSE**  
 $\phi$  51x34x15 mm



DIHR 76081

**3786042 PIPE SLIDING GASKET**



DIHR 13304

## Gears

**5018162 CONVEYOR SHAFT LONG WITH ECCENTRIC**  
overall length 250 mm



DIHR 3003116

## Guides

**3391017 HOOD SLIDE 600 mm**



DIHR DW75304

DIHR 75304

**3053587 HOOD SLIDE-TRAY 700 mm**



DIHR 76080

**5031160 PROFILE FOR DOOR SLIDE-TRAY 760 mm**



DIHR 3004026



Suitable for:

Suitable for:

3189042 SLIDEWAY FOR HOOD LH 650x25 mm

3704004 BUSHING FOR SLIDE RH/LH



DIHR 11600029

DIHR 11600016

DIHR 11600017

DIHR 11600055

3189041 SLIDEWAY FOR HOOD RH  
dimensions 695x25 mm

3704004 BUSHING FOR SLIDE RH/LH



DIHR 11600028

DIHR 11600016

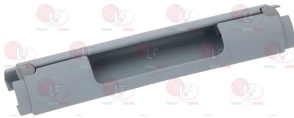
DIHR 11600017

DIHR 11600055

### Handles

3242380 DOOR HANDLE 257 mm

3242377 HANDLE HEAD



DIHR 135240

DIHR 135241

3242378 PLASTIC HANDLE 547 mm



DIHR 560550

### Heating elements

3455418 BRACKET FOR HEATING ELEMENT

5015994 COVER FOR HEATING ELEMENT /PLASTIC  
ø 130 mm - height 40 mm



DIHR 11813

DIHR 16045

DIHR 75311

Suitable for:

**3455310 HEATING ELEMENT BOILER 14000/15240W 230/**  
 immersed depth 480 mm  
 flange external  $\varnothing$  72 mm - with bulbholder sheathin  
 complete with O-ring  $\varnothing$  67 mm (3186014)  
 nut on request (3528233) and washer (3528238)



DIHR 30001011/B

**3186014 O-RING 06225 EPDM  $\varnothing$  67 mm**  
 ring thickness 5.34 mm - internal  $\varnothing$  56.52 mm

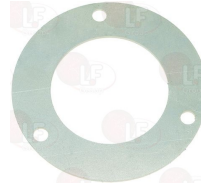


DIHR 13015

DIHR 13020

Suitable for:

**3455308 FLANGE FOR HEATING ELEMENT**  
 internal  $\varnothing$  57 mm



DIHR 30001024

**3355475 HEATING ELEMENT BOILER 2500W 230V**  
 immersed depth 195 mm  
 flange external  $\varnothing$  63 mm  
 with bulbholder sheathing  $\varnothing$  7 mm  
 complete with O-ring  $\varnothing$  58 mm (3186013)



DIHR 16036/A

**3186013 O-RING 06187 EPDM  $\varnothing$  58 mm**  
 ring thickness 5.34 mm - internal  $\varnothing$  47.00 mm



DIHR 13005

**3455323 HEATING ELEMENT BOILER 2800/3050W 230/24**  
 immersed depth 375 mm  
 flange external  $\varnothing$  63 mm - with bulbholder sheathin  
 complete with O-ring  $\varnothing$  58 mm (3186013)



DIHR 15089/D

**3755036 HEATING ELEMENT BOILER 2800W 230V**  
 immersed depth 300 mm  
 flange external  $\varnothing$  55 mm  
 with bulbholder sheathing  $\varnothing$  7 mm  
 complete with O-ring  $\varnothing$  48 mm (3186001)



DIHR 18206/D



Suitable for:

# DIHR



**3355477 HEATING ELEMENT BOILER 3000W 220/380V**  
 immersed depth 265 mm  
 flange external  $\varnothing$  63 mm  
 with bulbholder sheathing  $\varnothing$  6 mm  
 complete with O-ring  $\varnothing$  58 mm (3186013)



DIHR 15046

Suitable for:

**3186013 O-RING 06187 EPDM  $\varnothing$  58 mm**  
 ring thickness 5.34 mm - internal  $\varnothing$  47.00 mm



DIHR 13005

**3455305 HEATING ELEMENT BOILER 3000W 230V**  
 immersed depth 195 mm  
 flange ext.  $\varnothing$  63 mm with distance between holes 72  
 complete with O-ring  $\varnothing$  58 mm (3186013)



DIHR

DIHR 10300011

**3755038 HEATING ELEMENT BOILER 4000W 230V**  
 immersed depth 300 mm  
 flange external  $\varnothing$  55 mm  
 complete with O-ring  $\varnothing$  48 mm (3186001)



DIHR 18215

**3355478 HEATING ELEMENT BOILER 4500W 220/380V**  
 immersed depth 370 mm  
 flange external  $\varnothing$  63 mm  
 with bulbholder sheathing  $\varnothing$  7 mm  
 complete with O-ring  $\varnothing$  58 mm (3186013)



DIHR 15089

**3186013 O-RING 06187 EPDM  $\varnothing$  58 mm**  
 ring thickness 5.34 mm - internal  $\varnothing$  47.00 mm



DIHR 13005

**3455313 HEATING ELEMENT BOILER 6000/6530W 230/24**  
 immersed depth 375 mm  
 flange external  $\varnothing$  63 mm - with bulbholder sheathin  
 complete with O-ring  $\varnothing$  58 mm (3186013)



DIHR 15089/E

**3455306 HEATING ELEMENT FINNED 2000/2180W 230/24**  
 length 390 mm - length of finned part 360 mm  
 width 100 mm - fittings  $\varnothing$  3/8"



DIHR 2000359



Suitable for:

**3355479 HEATING ELEMENT FOR BOILER 6000W 220/380**  
 immersed length 460 mm  
 flange external  $\varnothing$  72 mm  
 with probe receptacle  $\varnothing$  7 mm  
 complete with O-ring  $\varnothing$  67 mm (3186014)  
 nut (3528232) and washer (3528238) on request



DIHR 30001010

**3186014 O-RING 06225 EPDM  $\varnothing$  67 mm**  
 ring thickness 5.34 mm - internal  $\varnothing$  56.52 mm

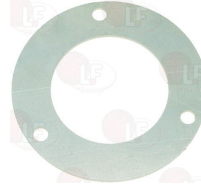


DIHR 13015

DIHR 13020

Suitable for:

**3455308 FLANGE FOR HEATING ELEMENT**  
 internal  $\varnothing$  57 mm



DIHR 30001024

**3355480 HEATING ELEMENT FOR BOILER 9000W 220/380**  
 immersed length 460 mm  
 flange external  $\varnothing$  72 mm  
 with probe receptacle  $\varnothing$  7 mm  
 complete with O-ring  $\varnothing$  67 mm (3186014)  
 nut (3528232) and washer (3528238) on request



DIHR 30001011

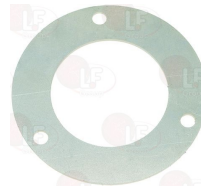
**3186014 O-RING 06225 EPDM  $\varnothing$  67 mm**  
 ring thickness 5.34 mm - internal  $\varnothing$  56.52 mm



DIHR 13015

DIHR 13020

**3455308 FLANGE FOR HEATING ELEMENT**  
 internal  $\varnothing$  57 mm



DIHR 30001024

**3755037 HEATING ELEMENT TANK 1100W 230V**  
 immersed depth 200 mm  
 width 38 mm - height 30 mm  
 flange 51x28 mm



DIHR 540401

**3355482 HEATING ELEMENT TANK 1800W 230V**  
 immersed depth 190 mm  
 width 42 mm - flange 61x26 mm



DIHR 17201



Suitable for:

# DIHR



Suitable for:

**3355483 HEATING ELEMENT TANK 1850W 230V**  
 immersed depth 255 mm  
 width 42 mm - flange 61x26 mm  
 complete with gasket



DIHR 16035/A

DIHR 16035A

**3355484 HEATING ELEMENT TANK 2700W 230/400V**  
 immersed depth 255 mm  
 height 25 mm - flange external  $\varnothing$  63 mm  
 complete with O-ring  $\varnothing$  58 mm (3186013)



DIHR 15047/A

**3186013 O-RING 06187 EPDM  $\varnothing$  58 mm**  
 ring thickness 5.34 mm - internal  $\varnothing$  47.00 mm



DIHR 13005

**3355485 HEATING ELEMENT TANK 2700W 230V**  
 immersed depth 350 mm  
 width 42 mm - flange 61x26 mm  
 complete with gasket



DIHR 150047

**3355168 HEATING ELEMENT TANK 5700W 220/240V**  
 immersed length 310 mm  
 width 85 mm - fitting  $\varnothing$  1"1/4 (43 mm)  
 complete with gasket  $\varnothing$  54 mm (3186010)



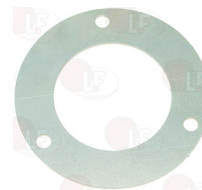
DIHR 10300022

**3755952 HEATING ELEMENT 12000W 220V**  
 immersed depth 460 mm  
 flange external  $\varnothing$  72 mm - with bulbholder sheathin  
 complete with O-ring  $\varnothing$  67 mm (3186014)



DIHR 30001011/A

**3455308 FLANGE FOR HEATING ELEMENT**  
 internal  $\varnothing$  57 mm



DIHR 30001024

**3186014 O-RING 06225 EPDM  $\varnothing$  67 mm**  
 ring thickness 5.34 mm - internal  $\varnothing$  56.52 mm



DIHR 13015

DIHR 13020

Suitable for:

Suitable for:

**3355481 HEATING ELEMENT 2000W 240V**  
 immersed length 290 mm  
 width 42 mm - flange 61x26 mm



DIHR 10714

**3355476 HEATING ELEMENT 2400W 230V**  
 for boiler and wash tank  
 immersed depth 250 mm  
 flange external  $\varnothing$  55 mm  
 with bulbholder sheathing  $\varnothing$  7 mm  
 complete with O-ring  $\varnothing$  48 mm (3186001)



DIHR 18206

**3186001 O-RING 06150 EPDM**  
 ring thickness 5.34 mm - internal  $\varnothing$  37.47 mm



DIHR 13010

**3355106 HEATING ELEMENT 6000W 230/400V**  
 for boiler and tank  
 immersed length 350 mm  
 flange external  $\varnothing$  72 mm - with bulb-sheathing  
 with O-ring  $\varnothing$  67 mm (3186014)  
 nut (3528232) and washer (3528238) on request



DIHR 3003977

**3186014 O-RING 06225 EPDM  $\varnothing$  67 mm**  
 ring thickness 5.34 mm - internal  $\varnothing$  56.52 mm



DIHR 13015

DIHR 13020

## Hinges, catches and accessories

**5025041 BRACE DOOR RH/LH**  
 length 188 mm



DIHR 250006

DIHR 250007

DIHR 250041

**5026690 PLATE BRACE VERSION 05**



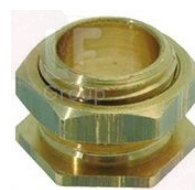
DIHR 250042

**3053339 HINGE FOR DOOR LH**



DIHR 150211

**3704005 BRASS BUSHING**



DIHR 11835

DIHR 11835/A



Suitable for:

**3053338 DOOR ROD SLIDEWAY**



DIHR 150401

**3743631 RH/LH DOOR ROD**



DIHR 150221

**3053123 HINGE FOR DOOR RH**



DIHR 540624

**3053121 RIGHTHAND HINGE ROD BUSH**



DIHR 540035

**3053323 HINGE FOR DOOR RH**



DIHR 150200

DIHR 150210

**3053338 DOOR ROD SLIDEWAY**



DIHR 150401

# DIHR

Suitable for:

**3053532 HINGE DOOR RETAINER K50**



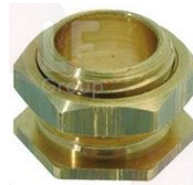
DIHR 135222

**3250034 DOOR RETURN SPRING 270 mm**



DIHR 560003

**3704005 BRASS BUSHING**



DIHR 11835

DIHR 11835/A

**3053532 HINGE DOOR RETAINER K50**



DIHR 135222





Suitable for:

**3743631 RH/LH DOOR ROD**



# DIHR

Suitable for:



DIHR 150221

**3053529 HINGE LH**



**3053338 DOOR ROD SLIDEWAY**



DIHR 550909

**3250212 DOOR SHORT SPRING 230 mm**  
for GS100-K100



DIHR 150401

**3053472 DOOR TIE ROD**



DIHR 550206/A

**3053532 HINGE DOOR RETAINER K50**



DIHR 150221/A

**3250153 SPRING FOR DOOR / LONG  $\varnothing$  20x530 mm**  
for DISHWASER GS100



DIHR 135222

**3053471 HINGE RH**



DIHR 550206

**3053338 DOOR ROD SLIDEWAY**



DIHR 550908

**3250212 DOOR SHORT SPRING 230 mm**  
for GS100-K100



DIHR 150401

**3053472 DOOR TIE ROD**



DIHR 550206/A

DIHR 150221/A



Suitable for:

**3053532 HINGE DOOR RETAINER K50**



DIHR 135222

**3053473 HINGE RH**



DIHR 135221

**3053532 HINGE DOOR RETAINER K50**



DIHR 135222

**3053124 LEFTHAND DOOR HINGE**



DIHR 540629

**3053122 LEFTHAND HINGE ROD BUSH**



DIHR 540036

**3053337 LH RUBBER PIECE FOR DOOR HINGE**



DIHR 560007

# DIHR



Suitable for:

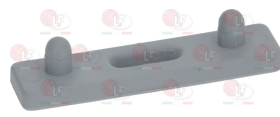
**3250153 SPRING FOR DOOR / LONG  $\varnothing$  20x530 mm**  
for DISHWASER GS100



DIHR 550206

DIHR 550212

**3053338 DOOR ROD SLIDEWAY**



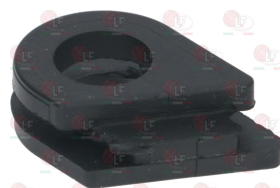
DIHR 150401

**3250034 DOOR RETURN SPRING 270 mm**



DIHR 560003

**3053336 RH RUBBER PIECE FOR DOOR HINGE**



DIHR 560006

Suitable for:

**3053588 ROD FOR DOOR STAINLESS STEEL  $\varnothing$  8x430 mm**



DIHR 18136

**3250035 DOOR RETURN SPRING 140 mm**



DIHR 10700/B

**3053315 ROD FOR DOOR STAINLESS STEEL 490 mm**



DIHR 16046

**3250035 DOOR RETURN SPRING 140 mm**



DIHR 10700/B

**3053211 ROD FOR DOOR STAINLESS STEEL 580 mm**



DIHR 15009

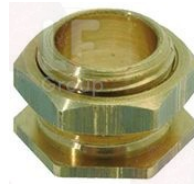
**3250037 DOOR RETURN SPRING 138 mm**



DIHR 10700/A

Suitable for:

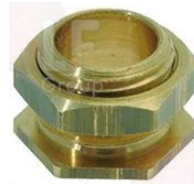
**3704005 BRASS BUSHING**



DIHR 11835

DIHR 11835/A

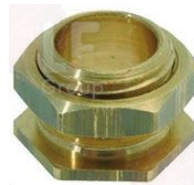
**3704005 BRASS BUSHING**



DIHR 11835

DIHR 11835/A

**3704005 BRASS BUSHING**



DIHR 11835

DIHR 11835/A

**5013975 SCREWS NO HEAD WITH HEXAGON SOCKET M5x20**  
stainless steel - cone-shaped edge  
UNI 5927 - DIN 914 - ISO 4027



DIHR 11501



Suitable for:

3053326 STAINLESS STEEL DOOR ROD 545 mm



DIHR 26009

3250037 DOOR RETURN SPRING 138 mm



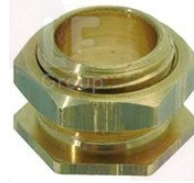
DIHR 10700/A

# DIHR



Suitable for:

3704005 BRASS BUSHING



DIHR 11835

DIHR 11835/A

5013975 SCREWS NO HEAD WITH HEXAGON SOCKET M5x20

stainless steel - cone-shaped edge  
UNI 5927 - DIN 914 - ISO 4027



DIHR 11501

## Hose-end fittings

3315106 HOSE END FITTING 3-WAYS  $\varnothing$  10 mm



DIHR 540090

3315107 HOSE END FITTING 3-WAYS  $\varnothing$  12



DIHR 540091

3315026 HOSE END FITTING 4-WAYS  $\varnothing$  10 mm



DIHR 15151

## Hydraulic piping

3450736 PRESSURE SWITCH PIPE  $\varnothing$  4x8.5 mm - 10 m

made of black rubber  
external  $\varnothing$  8.5 mm  
internal  $\varnothing$  4 mm



DIHR 14508

DIHR 14508\_10MT

3450651 RUBBER HOSE 110°C  $\varnothing$  10x16 mm - 40 mt

temperature -30°+110°C  
operating pressure 10 bar  
burst pressure 40 bar  
non-toxic rubber hose  
external  $\varnothing$  16 mm  
internal  $\varnothing$  10 mm  
40-m rolls  
for 5-m rolls see 3450621



DIHR 2907352



Suitable for:

Suitable for:

**3450621 RUBBER HOSE 110°C  $\varnothing$  10x16 mm - 5 mt**  
 temperature -30°+110°C  
 operating pressure 10 bar  
 burst pressure 40 bar  
 non-toxic rubber hose  
 external  $\varnothing$  16 mm  
 internal  $\varnothing$  10 mm  
 for 40 m rolls see 3450651



DIHR 2907352

## Indicator lights

**3221091 INDICATOR LIGHT GREEN 230V**  
 head  $\varnothing$  7 mm - hole  $\varnothing$  6 mm  
 with cable 250 mm



DIHR 10711

**3221093 INDICATOR LIGHT GREEN 230V**  
 mounting hole 22x30 mm



DIHR 15051

**3221132 INDICATOR LIGHT GREEN 230V**  
 head  $\varnothing$  13.5 mm - hole  $\varnothing$  10 mm - 120°C  
 universal application



DIHR 10711/B

**3221082 INDICATOR LIGHT GREEN 24V**  
 hole  $\varnothing$  11.5 mm - head  $\varnothing$  18 mm  
 max temperature 120°C



DIHR 10711/C

**3221167 RED LAMP RECEPTACLE**  
 head  $\varnothing$  15 mm - hole  $\varnothing$  10 mm



DIHR 15826/C

**3221162 GREEN LAMP RECEPTACLE**  
 head  $\varnothing$  14.5 mm - hole  $\varnothing$  10 mm



DIHR 15826/B

**3319102 SWITCH BLOCK WITH 2 BLANKS - GREY**  
 mounting hole 28x74 mm  
 green indicator light 250V



DIHR 15889

**3221097 INDICATOR LIGHT NEUTRAL 220V**  
 head  $\varnothing$  8 mm - 120°C



DIHR 15826



Suitable for:

3319446 LAMP CAP GREEN 23x23 mm TERMOMETRO



DIHR 15876

DIHR

Suitable for:



## Inlet hoses

3449001 INLET ELBOW HOSE  $\varnothing$  3/4" FF 1500 mm  
thermoplastic hose  $\varnothing$  10x16 mm  
nylon fittings  $\varnothing$  3/4" with gaskets  
max temperature 90°C  
max pressure 10 bar



DIHR 10726

## Interference suppression filters

3160479 INTERFERENCE SUP. FILTER D.E.M.FC701Y2FL  
0.47 $\mu$ F



DIHR 15149

## Ironmongery (screws,nuts,washers)

1528013 BLIND HEXAGONAL NUT M6  
stainl. steel -height 16 mm -UNI 5721 - DIN 1587



DIHR 11709

5013493 COUNTERSUNK FLAT HEAD SCREWS M5x10  
cross recessed - stainless steel  
UNI 7688 - DIN 965 - ISO 7046



DIHR DW11020

DIHR 11020

5039329 COUNTERSUNK FLAT HEAD SCREWS M5x25  
cross recessed - stainless steel  
UNI 7688 - DIN 965 - ISO 7046



DIHR 11219

5020972 CYLINDER HEAD SCREW M4x25  
stainless steel - cross recessed  
UNI 7687 - DIN 7985 - ISO 7045



DIHR 11105

**1528631 CYLINDER HEAD SCREW M4x8**  
stainless steel - cross recessed  
UNI 7687 - DIN 7985 - ISO 7045



DIHR 11121

**9742005 FEATHER STEEL C40 8x7x30 mm**  
UNI 6604/A - DIN 6685/A



DIHR 2001046

**5022074 HEXAGON HEAD SCREW M8x40**  
stainless steel - UNI 5739 - DIN 933 - ISO 4017



DIHR 11165

**5035625 SCREW WITH HEXAGON HEAD M8x35**  
stainless steel - UNI 5739 - DIN 933 - ISO 4017



DIHR 11110

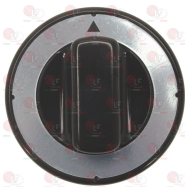
**5024124 SPIRAL SPRING WASHER M5**  
internal/external  $\varnothing$  5.3/8.9 mm - thickness 2.4 mm  
stainless steel - UNI 1751 - DIN 127 B



DIHR 11608

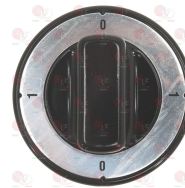
## Knobs

**3241863 BLACK KNOB  $\varnothing$  70 mm**  
D-shaped hole 6x4.6 mm



DIHR

**3241860 BLACK KNOB  $\varnothing$  70 mm 0-1-0-1**  
D-shaped hole 6x4.6 mm



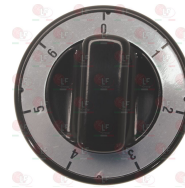
DIHR

**3241861 BLACK KNOB  $\varnothing$  70 mm 0-1-2-3**  
D-shaped hole 6x4.6 mm



DIHR

**3241862 BLACK KNOB  $\varnothing$  70 mm 0-1-2-3-4-5-6**  
D-shaped hole 6x4.6 mm



DIHR



Suitable for:

**3241855 BLACK KNOB ø 70 mm 30-110°C**  
D-shaped hole 6x4.6 mm



DIHR

Suitable for:

**3241856 BLACK KNOB ø 70 mm 30-110°C**  
D-shaped hole 6x4.6 mm



DIHR

**3241853 BLACK KNOB ø 70 mm 30-90°C**  
D-shaped hole 6x4.6 mm



DIHR

**3241402 KNOB BLACK ø 70 mm UNIVERSAL**  
D-shaped hole 6x4.6 mm  
for thermostat, selector switch, timer,  
program switch, energy regulator



DIHR 9104

**3241864 KNOB BLACK MIN-MAX ø 70 mm**  
D-shaped hole 6x4.6 mm



DIHR

**Labels for control panels**

**3399068 CONTROL PANEL**



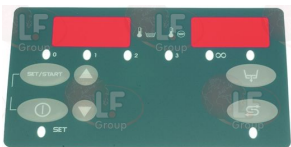
DIHR 540501

**3399071 CONTROL PANEL 600 mm**



DIHR 560501

**5027598 DIAPHRAGM SILK SCREENED**



DIHR 50571

DIHR 50572

DIHR 50575

DIHR 50578



## Manifolds for dishwashers

- 3061029 MANIFOLD WITH LATERAL DRAIN LH**  
 suction hose end fitting  $\varnothing$  56 mm  
 drain tube hose end fitting  $\varnothing$  28 mm  
 flange external  $\varnothing$  93 mm  
 thread for ring nut  $\varnothing$  74 mm  
 closed additional outlet external  $\varnothing$  11 mm



DIHR 500605

## Microswitches, magnetic

- 1240025 MAGNETIC MICROSWITCH**  
 bulb  $\varnothing$  9x30 mm - cable length 920 mm



DIHR 2000309

DIHR 60520

- 3240196 MAGNETIC MICROSWITCH E5201V**  
 0.04A 250V - NO contact - head 40x13x8 mm  
 with cable length 1400 mm



DIHR 10778

- 3240441 MAGNETIC MICROSWITCH E5301C**  
 0,4A 250V NO - cable 900 mm



DIHR 3003112

- 3240442 MAGNET FOR MICROSWITCH  $\varnothing$  12x10 mm**



DIHR 3003113

## Microswitches, mechanical

- 3240407 MICROSWITCH KIT 16A 250V**  
 2 locking positions  
 the kit includes 5 levers:  
 lever 75 mm - lever 27 mm - lever 15 mm  
 lever 15 mm with wheel - lever 27 mm with wheel



DIHR 10704

- 3240197 MICROSWITCH PIZZATO MF17**  
 1-NO 1-NC 16A 250V



DIHR 70305



Suitable for:

DIHR



Suitable for:

**3240123** MICROSWITCH ROLD VRSRB1DA1  
16A 250V



DIHR 60505

DIHR 60539

### Motors

**5022488** MOTOR 0.18KW 230/400V 50Hz



DIHR 3000120

### Non-return and expansion valves

**1526503** NON-RETURN VALVE  $\varnothing$  40 mm  
ballcock - outlets  $\varnothing$  12 mm  
stainless steel cap



DIHR 15201+15202+15203

DIHR 999900006

**1186805** O-RING 0115 EPDM  
ring thickness 2.62 mm - internal  $\varnothing$  11.91 mm



DIHR 15285

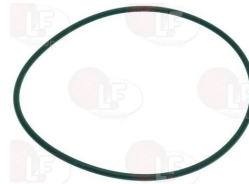
### O-Ring and ORM gaskets

**1186672** O-RING 03193 EPDM  
ring thickness 2.62 mm - internal  $\varnothing$  48.89 mm  
for brew group



DIHR 96115

**5015751** O-RING 03350 EPDM  
ring thickness 2.62 mm - internal  $\varnothing$  88.57 mm



DIHR 61067

**3786579** O-RING 78.94x2.62 mm EPDM  
ring thickness 2.62 mm - internal  $\varnothing$  78.94 mm



DIHR 10506



## Pegs

**3389006 PEG STAINLESS STEEL RH**



DIHR 3003100

**3389008 PTFE RING FOR PEG**



DIHR 3003024

**5054376 TAPE ROD  $\varnothing$  8x707 mm**



DIHR 3060000

**3389007 PEG STAINLESS STEEL LH**



DIHR 3003101

**3389009 SPACER BUSHING FOR PEG**



DIHR 3003025

**5024589 TRANSPORTER FINGER**



DIHR 3060035

## Pins

**3743363 STAINL.STEEL BOARD EXTENSION 140 mm**



DIHR 15304

**5043180 SUPPORT SHAFT FOR CART TRANSVERSAL**  
thread M10  
length 506 mm



DIHR 3003010

## Position switches

**3240198 LIMIT MICROSWITCH PIZZATO FR501**  
3A 400V



DIHR 10600138



Suitable for:

# DIHR



Suitable for:

## Pressure switches

**3320044** PRESSURE SWITCH 0-30 mbar  
1 level



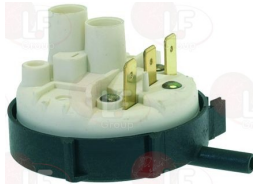
DIHR 540205

**3320036** PRESSURE SWITCH 1 LEVEL  
calibration 75/35 mm  
250V 16A  
max operating temperature 85°C



DIHR 1030026

**3320082** PRESSURE SWITCH 1 LEVEL  
calibration 100/18 mm  
250V 16A  
max operating temperature 85°C



DIHR 80225

**3320091** PRESSURE SWITCH 1 LEVEL  
calibration 46/26 mm  
250V 16(4)A



DIHR 10706

DIHR 10706/A

**3320098** PRESSURE SWITCH 1 LEVEL  
calibration 250/40 mm  
250V 16(4)A



DIHR 88110

**3320128** PRESSURE SWITCH 1 LEVEL  
calibration 60/25 mm



DIHR 540450

**3320207** PRESSURE SWITCH 1 LEVEL  
calibration 86/59 mm



DIHR 75950

## Probes

**3390309** PROBE THERMOSTAT FOR CIR. BOARD EC02  
capillary 2000 mm



DIHR DW50562

DIHR 50562





## Relays

**5026284 POWER RELAY FINDER 40.52.8.024.0000**  
24Vac 50/60Hz - 2 exchange contacts 8A



DIHR 3006078

**3351021 POWER RELAY FINDER 62.82.8.230.0000**  
230V 50/60Hz  
2 exchange contacts 16A



DIHR 15620

**3351029 POWER RELAY FINDER 62.82.8.230.0300**  
230V 50/60Hz  
2 contacts NO 16A



DIHR 16037

**3351008 POWER RELAY FINDER 62.83.8.230.0000**  
230V 50/60Hz  
3 exchange contacts 16A



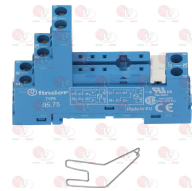
DIHR 16047

**3351097 RELAY POWER FINDER 62.82.8.230.0309**  
230V 50/60Hz  
2 NO contacts 16A



DIHR 560301

**3351039 SOCKET WITH TERMINALS FINDER 95.75**  
10A 250V



DIHR 3006079

## Rinse aid pumps and accessories

**5050303 DETERGENT DISP. PERISTALTIC PUMP**  
adjustable flow rate 0-3 L/h  
220/240V 50/60Hz 8W  
time/stand-by adjustment



DIHR 15985

**3090220 FILTER WITH ST. STEEL WEIGHT**



DIHR 12525

DIHR 15058



Suitable for:

# DIHR



**3090144 DETERGENT DISP. PERISTALTIC PUMP REGO®**  
 REGO PS20RN - 230V 50Hz 4.5W - IP42  
 adjustable flowrate 0.28÷2.8 L/h  
 max pressure 1 bar  
 norprene tube for detergent  
 complete with assembly kit



DIHR

Suitable for:

**3090190 DETERGENT DISP. PERISTALTIC PUMP REGO®**  
 REGO PLUS PS20RN - 230V 50Hz - IP42  
 flow rate 3 L/h  
 norprene tube for detergent  
 Ext.size. 160x80x85 mm



DIHR

**3090016 HYDRAULIC DISPENSER TYPE 3000**  
 for rinse aid - flow rate max 3.6 cc  
 with inspectionable filter - silicone valves  
 neoprene/nylon diaphragm



DIHR 10599999

**3090056 DIAPHRAGM MOD. DA 3010**



DIHR

**3090003 INLET VALVE FOR RINSE AID INJECTOR**



DIHR

**3090017 SUCTION FILTER TYPE 3000**



DIHR

**3090018 T-FITTING BLACK**



DIHR

**3090150 HYDRAULIC RINSE AID DISPENSER**  
 ex mod.2000/VNR/D/1  
 flow rate max 6.6 cc  
 valves and silicone diaphragm



DIHR 10799/G

DIHR 10799/G+12506

**3090055 DIAPHRAGM MOD. DA 1011**

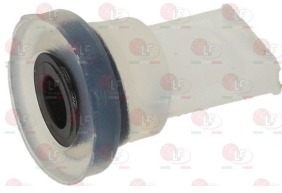


DIHR 10705/O



Suitable for:

**3090221 SILICONE VALVE F/DISPENSER MOD.1000**



DIHR 10705/D

DIHR 16070

# DIHR

Suitable for:



**3090028 PERISTALTIC DETERGENT PUMP G150**  
230V 50/60Hz 4W  
detergent flow rate 0.622 gr per second  
max flow rate 1.6 l/hour (equivalent to 1600 cm<sup>3</sup>)  
for GLASSWASHER and CUPWASHER



DIHR 15108

**3090017 SUCTION FILTER TYPE 3000**



DIHR

**3090029 PERISTALTIC DETERGENT PUMP G200**  
230V 50/60Hz 4W  
detergent flow rate 0.777 gr per second  
max flow rate 2 l/hour (equivalent to 2000 cm<sup>3</sup>)  
for DISHWASHER (500 DISHES PER HOUR)



DIHR 15108/A

**3090017 SUCTION FILTER TYPE 3000**



DIHR

**3090032 ELBOW FOR TANK INLET**  
complete



DIHR 15123

**3090018 T-FITTING BLACK**



DIHR

**3090032 ELBOW FOR TANK INLET**  
complete



DIHR 15123

**3090018 T-FITTING BLACK**



DIHR



Suitable for:

# DIHR



**3090027 PERISTALTIC DETERGENT PUMP G80D**  
 230V 50/60Hz 3.5W  
 detergent flow rate 0.292 gr per second  
 max flow rate 0.75 L/hour (equivalent to 750 cm<sup>3</sup>)  
 for GLASSWASHER and CUPWASHER



DIHR 15108/C

**3090017 SUCTION FILTER TYPE 3000**



DIHR

**3090019 RINSE AID DISPENSER N6 E 05 G4G4**  
 with EPDM diaphragm  
 minimum pressure 0.5 bar  
 inlet side 4 mm hose fitting  
 outlet side 4 mm hose fitting



DIHR 10798

**3090076 RINSE AID DISPENSER 2 WAYS**  
 with adjusting screw  
 with pvc green tube ø 4x6 mm and foot filter



DIHR 10599999

**3090220 FILTER WITH ST. STEEL WEIGHT**



DIHR 12525

DIHR 15058

Suitable for:

**3090032 ELBOW FOR TANK INLET**  
 complete



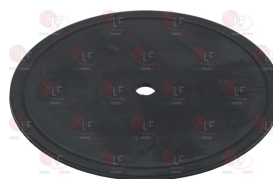
DIHR 15123

**3090018 T-FITTING BLACK**



DIHR

**3090194 DISPENSER DIAPHRAGM TECNOPRO**



DIHR 10807

**3090083 RINSE AID DISPENSER 3 WAYS**  
with adjusting screw  
with pvc green tube  $\varnothing$  4x6 mm and foot filter



DIHR 10799

**3090220 FILTER WITH ST. STEEL WEIGHT**

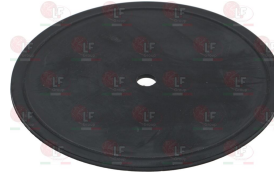


DIHR 12525

DIHR 15058

Suitable for:

**3090194 DISPENSER DIAPHRAGM TECNOPRO**



DIHR 10807

**3090219 RINSE AID DISPENSER 3 WAYS**  
with adjusting screw  
with pvc green tube  $\varnothing$  4x6 mm and foot filter



DIHR 10705

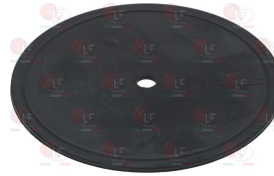
**3090220 FILTER WITH ST. STEEL WEIGHT**



DIHR 12525

DIHR 15058

**3090194 DISPENSER DIAPHRAGM TECNOPRO**



DIHR 10807

**5060263 RINSE AID PERISTALTIC DISPENSER**  
adjustable flow rate 0-3 L/h  
220/240V 50/60Hz 8W  
time/stand-by adjustment



DIHR 15985/B

**3090220 FILTER WITH ST. STEEL WEIGHT**



DIHR 12525

DIHR 15058



Suitable for:

DIHR



Suitable for:

## Salt containers and accessories

**3067001 SALT CONTAINER**



DIHR 16067

**3067002 FLAT GASKET EPDM  $\varnothing$  82x64x3 mm**  
for salt container



DIHR 16067/B

**3067016 FUNNEL FOR SALT INTAKE**  
external  $\varnothing$  93 mm hole  $\varnothing$  27 mm



DIHR 16082

**3450152 HOSE RUBBER REINFORCED  $\varnothing$  13/19 mm**  
internal  $\varnothing$  13 mm - external  $\varnothing$  19 mm  
temperature -40+100°C  
sold per meter



DIHR 2907350

**3067198 O-RING 04162 EPDM**  
ring thickness 3.53 mm - internal  $\varnothing$  40.86 mm



DIHR 16067/A

**3067007 SALT CONTAINER CAP**



DIHR 16067/D

**3067005 SALT CONTAINER RING NUT**



DIHR 16067/C

**3067602 SALT CONTAINER ASSEMBLY 85x100 mm**  
new model



DIHR 16065



## Scale removers for dishwashers

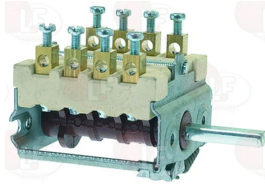
**3094005 4 COLUMN SCALE REMOVER**  
width 165 mm - length 390 mm



DIHR 16066

## Selector switches

**3057216 SELECTOR SWITCH 0-1 POSITIONS**  
contact capacity 16A 230V - max 150°C  
D-shaped pin 6x4.6 mm



DIHR 9564

**3319755 SELECTOR SWITCH 1-2-3-4 POSIT. 12A 690V**



DIHR 10300207

DIHR 10300208

**3057326 SELECTOR SWITCH 4 POSITIONS**



DIHR 3002031

## Sensors

**3390206 WATER FLOW SWITCH FOR CARD**  
for CR



DIHR 50583

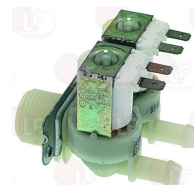
## Solenoid valves

**3120005 SOLEN. VALVE ELBITYPE 329 1 WAY 180°**  
220/240V 50/60Hz - max. temperature 90°C  
inlet 3/4" - outlet  $\varnothing$  10.5 mm



DIHR 10703

**3120007 SOLEN. VALVE ELBITYPE 349 2 WAY 180°**  
220/240V 50/60Hz - max. temperature 90°C  
inlet 3/4" - two outlets  $\varnothing$  10.5 mm



DIHR 15098



Suitable for:

# DIHR



**3120009 SOLEN. VALVE ELBI TYPE 351 1 WAY 180°**  
220/240V 50/60Hz - max. temperature 90°C  
inlet 3/4" - outlet ø 13.5 mm



DIHR 30001000

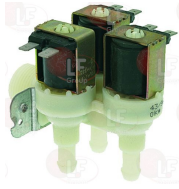
Suitable for:

**3120010 SOLEN. VALVE ELBI TYPE 352 2 WAY 90°**  
220/240V 50/60Hz - max. temperature 90°C  
inlet 3/4" - two outlets ø 13.5 mm



DIHR 30001001

**3120013 SOLENOID VALVE ELBI TYPE 359 3-WAY 90°**  
220/240V 50/60Hz - max. temperature 90°C  
inlet 3/4" - three outlets ø 10.5 mm



DIHR 15099

**3120557 SOLENOID VALVE L182B01 1/2"FF 24V**  
EX L180  
for water  
NC  
max temperature 100°C  
max differential pressure 16 bar  
coil 24V 50/60Hz



DIHR 3002030

**6240020 SOLENOID VALVE SWITCHOVER 3-WAY**  
230V 50/60Hz - max. temperature 90°C  
3 outlets ø 10.5 mm



DIHR 15213

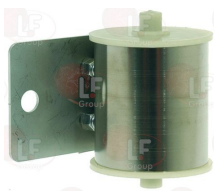
## Springs

**3250036 DOOR RETURN SPRING 130 mm**



DIHR 10700

**3250033 DOOR SPRING BBSR23**  
external ø 52 mm - width 50.8 mm



DIHR 3004011

DIHR 3004011+3009555

DIHR 3009555

DIHR 3009905

DIHR 3004015

**5023283 UPRIGHT SPRING SUPPORT ø 30x10x9 mm**



DIHR 3004012





# DIHR



Suitable for:

**3250213 HOOD LIFTING SPRING  $\varnothing$  38x630 mm**  
for GASTRO 12S



DIHR 70302

Suitable for:

**3250219 HOOD LIFTING SPRING  $\varnothing$  38x810 mm**  
for GASTRO 11S



DIHR 75303

**3250165 HOOD LIFTING SPRING  $\varnothing$  40x310 mm**  
for GASTRO 1200S



DIHR 10800033

DIHR 10800034

**5047761 RETURN-SPRING FOR DOOR 240 mm**



DIHR 570200

**3250031 SPRING FOR DOOR BBSR21**



DIHR 3004010

DIHR 3004010+3009555

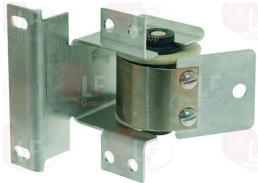
DIHR 3009555

**5023283 UPRIGHT SPRING SUPPORT  $\varnothing$  30x10x9 mm**



DIHR 3004012

**3250032 SPRING FOR DOOR BBSR22**



DIHR 3009906

**5032289 STAINLESS STEEL DOOR SPRING BBSR22**



DIHR 3004013

DIHR 3004013+3009555

DIHR 3009555

**5023283 UPRIGHT SPRING SUPPORT  $\varnothing$  30x10x9 mm**



DIHR 3004012

## Supports

**5044696 SUPPORT FOR SELECTOR BLOCK**



DIHR 89322



Suitable for:

# DIHR



Suitable for:

## Supports for wash and rinse arms

**5046895 COLUMN LOWER**



DIHR 25006

**5060891 COLUMN LOWER RL/09 CF**  
hose-end fittings washing  $\varnothing$  30 mm  
hose-end fittings rinse  $\varnothing$  11 mm



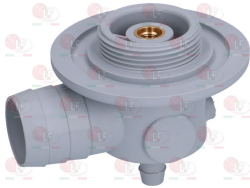
DIHR 25005

**3743152 LOWER STAINLESS STEEL FITTING**



DIHR 15039

**3743007 LOWER WASH SUPPORT**



DIHR 500621

**3743005 IMPELLER SUPPORT LOWER COLUMN**



DIHR 1160007

DIHR 1160035

**3743006 LOWER RINSE PIN**  
length 100 mm



DIHR 1160021

DIHR 4374

**3186014 O-RING 06225 EPDM  $\varnothing$  67 mm**  
ring thickness 5.34 mm - internal  $\varnothing$  56.52 mm



DIHR 13015

DIHR 13020

**3243386 PUNCHED SUPPORT FOR LOWER WASH ARM ASSY**



DIHR 10205/A

DIHR 10205/C

**3743017 BOWL ASSY WITH END-HOSE PIPE**



DIHR 135250

**3743011 BOWL ASSY WITH END-HOSE PIPE S98**  
height 150 mm



DIHR 18250

DIHR 18250/A

**3243390 ELBOW FITTING  $\varnothing$  3/8" M**  
hose-end fitting  $\varnothing$  12 mm



DIHR 12030



Suitable for:

**3243391 GASKET FLAT  $\varnothing$  10x5x1 mm**



DIHR 13303

**1186304 O-RING 0112 EPDM**  
ring thickness 2.62 mm - internal  $\varnothing$  9.92 mm



DIHR 13003

**3186244 O-RING 03125 EPDM**  
ring thickness 2.62 mm - internal  $\varnothing$  31.42 mm



DIHR 13000

**3743150 SPLASH GUARD FOR WASH/RINSE ARM ASSY**



DIHR 10204

**3243998 STAINLESS STEEL DISK**  
 $\varnothing$  internal 31 mm



DIHR 16038

**3743679 ST/STEEL COLUMN UPPER**



DIHR 75067

## DIHR

Suitable for:

**3743146 IMPELLER SPINDLE**



DIHR 12501

**1186362 O-RING 02021 EPDM**  
ring thickness 1.78 mm - internal  $\varnothing$  5.28 mm



DIHR 13001

**3743001 PIPE GUIDE**



DIHR 10203

**3243000 STAINLESS STEEL CONNECTING ROD 180 mm**



DIHR DW16039

DIHR 16039

**3243999 TUBING ASSEMBLY WITH HOSE**  
height 100 mm



DIHR DW16250

DIHR 16250

**3325001 MANIFOLD PIN 88 mm**



DIHR 75322





Suitable for:

**3743015 RINSE ELBOW NUT 1/4"**



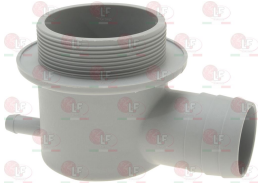
DIHR 75319

# DIHR

Suitable for:



**5039144 SUPPORT ARM ASSEMBLY LOWER/UPPER**



DIHR 90008

**5039145 DRUM FOR UPPER STRUCTURE FIXING**



DIHR 90009

**3186228 FLAT GASKET EPDM  $\varnothing$  95x75x3 mm**



DIHR 80208

**3743309 SUPPORT FOR BOTTOM ARM ASSEMBLY**



DIHR 15909

**3743209 UPPER RINSE COLUMN**



DIHR 10909

**3243473 UPPER WASH ARM ASSEMBLY SUPPORT**  
complete with spindle and pipe guide



DIHR 540047

DIHR 540071+540015+...

DIHR 540072

**3186226 GASKET FLAT EPDM  $\varnothing$  57x43x1.5 mm**  
for wash support



DIHR 540032

**3243474 SUPPORT LOCKING NUT**



DIHR 540010

DIHR 540069



Suitable for:

**3243475 UPPER WASH ARM ASSEMBLY SUPPORT**



DIHR 540017

DIHR 540048

**3243476 RING NUT FOR SUPPORT LOCKING**  
with  $\varnothing$  10 mm hole



DIHR 540016

DIHR 540070

**3243477 UPPER WASH ARM ASSEMBLY SUPPORT**  
complete with spindle



DIHR 15069

DIHR 15069/A

DIHR 15069/C

DIHR 15069/D

DIHR 15910

**3243995 RINSE PIPE FITTING**



DIHR 12006

# DIHR



Suitable for:

**3186226 GASKET FLAT EPDM  $\varnothing$  57x43x1.5 mm**  
for wash support



DIHR 540032

**1186304 O-RING 0112 EPDM**  
ring thickness 2.62 mm - internal  $\varnothing$  9.92 mm



DIHR 13003

**3243478 STAINLESS STEEL SPINDLE FOR SUPPORT**

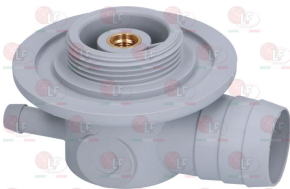


DIHR 15300

DIHR 15301

DIHR 22029

**3243479 UPPER-LOWER WASH ARM ASSEMBLY SUPPORT**  
without spindle



DIHR 500612

**3743750 BOTTOM SLEEVE 170 mm**



DIHR 76077

**3743012 LOWER IMPELLER SUPPORT**  
height 125 mm



DIHR 500614

DIHR 550223

DIHR 550225

**3743013 LOWER RINSE PIN**  
length 110 mm



DIHR 550208

DIHR 550226



Suitable for:

**3186014 O-RING 06225 EPDM  $\varnothing$  67 mm**  
ring thickness 5.34 mm - internal  $\varnothing$  56.52 mm



DIHR 13015

DIHR 13020

**3243995 RINSE PIPE FITTING**



DIHR 12006

**3243480 SUPPORT LOCKING RING NUT**



DIHR 500610

DIHR 500623

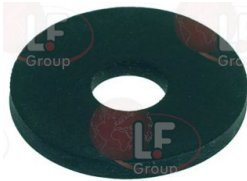
**3243388 WASH ARM ASSEMBLY SUPPORT**



DIHR 15041

DIHR 15041/A

**3186275 GASKET FLAT EPDM  $\varnothing$  24x7x2.5 mm**



DIHR 13313

**3743147 LOWER SHAFT SOCKET**



DIHR 15040/A

DIHR 22028

# DIHR



Suitable for:

**3743310 RINSE BOARD EXTENSION**



DIHR 75315

**3243478 STAINLESS STEEL SPINDLE FOR SUPPORT**



DIHR 15300

DIHR 15301

DIHR 22029

**3743145 FLAT WASHER M8**

internal/external  $\varnothing$  8.4/16 mm - thickness 1.6 mm  
stainless steel - UNI 6592 - DIN 125 A - ISO 7089



DIHR 11185

DIHR 11611

**3243994 HOSE END FITTING  $\varnothing$  10 mm**  
threaded connection M12x1



DIHR 12506

**3243389 O-RING 03162 EPDM**

ring thickness 2.62 mm - internal  $\varnothing$  40.95 mm



DIHR 13006



Suitable for:

**3186197 O-RING 04150 EPDM**  
ring thickness 3.53 mm - internal  $\varnothing$  37.69 mm



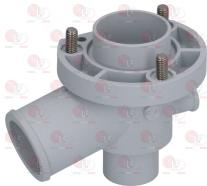
DIHR 13022

**3743680 RINSE EXTENSION  $\varnothing$  10x162 mm**



DIHR 22026

**3243385 WASH ARM ASSEMBLY SUPPORT  $\varnothing$  18 mm**



DIHR 10205

DIHR 10205/B

## DIHR



Suitable for:

**3743148 RING NUT FOR WASH/RINSE ARM ASSY**



DIHR 15038

**3743144 TIE ROD PIN**



DIHR 70303

**3186244 O-RING 03125 EPDM**  
ring thickness 2.62 mm - internal  $\varnothing$  31.42 mm



DIHR 13000

## Switches

**3319090 BIPOLAR SWITCH GREEN 16A 250V**  
16(4)A 250V - max. temperature 120°C  
with indicator light and push-button cap  
mounting hole 22x30 mm



DIHR 15048

**3319222 BIPOLAR SWITCH 16A 250V**



DIHR 15800

**3319094 BLUE MONOPOLAR SWITCH ROLD E2009**  
monopolar switch NO 16A 250V  
max temperature 125°C  
mounting hole 28x28 mm



DIHR 15860

**3319571 HOUSING FOR PUSH-BUTTON SQUARE GREY**  
mounting hole 28x28 mm - for push-button 23x23 mm



DIHR 15815



Suitable for:

**1319082 SINGLE-POLE PUSH BUTTON 16A 250V**



DIHR 15813

# DIHR



Suitable for:

**5032844 BUTTON SQUARE YELLOW 23x23 mm "0-1"**  
with control window



DIHR 15855

**3319744 BUTTON 2 NEUTRAL LIGHT BLUE**  
for models produced until the 12/1999



DIHR 560523

**3319745 BUTTON 4 LIGHT BLUE 2 SETTINGS**



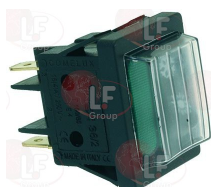
DIHR 560530

**3319743 BUTTON 5 LIGHT BLUE**



DIHR 560526

**3319093 CHANGEOVER SWITCH 1 POLE GREEN 16A 250V**  
16(4)A 250V - with switch cover  
with indicator light  
max. temperature 120°C  
mounting hole 22x30 mm



DIHR 18080

**3319091 CHANGEOVER SWITCH 2 POLE GREEN 16A 250V**  
16(4)A 250V - max. temperature 120°C  
with indicator light and push-button cap  
mounting hole 22x30 mm



DIHR 15050

**3319614 FIX BUTTON BLACK 23x23 mm**



DIHR 15845

**3319097 GREEN BIPOLAR SWITCH ROLD E0506**  
bipolar change over switch 16A 250V  
max temperature 125°C  
mounting hole 28x28 mm



DIHR 15865





Suitable for:

Suitable for:

**3319096 GREEN BIPOLAR SWITCH 250V**  
mounting hole 28x28 mm



DIHR 15849

DIHR 15861

**3319920 BIPOLAR SWITCH BLACK 16A 250V**



DIHR 15812

**3319571 HOUSING FOR PUSH-BUTTON SQUARE GREY**  
mounting hole 28x28 mm - for push-button 23x23 mm



DIHR 15815

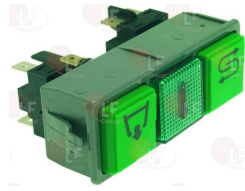
**3319647 PUSH-BUTTON SQUARE GREEN 23x23mm "ON/OFF"**



DIHR 15857

DIHR 15874

**3319104 GREEN DOUBLE SWITCH BLOCK 250V 16A**  
1 monopolar switch  
1 bipolar switch  
with indicator light



DIHR 15892

**3221097 INDICATOR LIGHT NEUTRAL 220V**  
head  $\varnothing$  8 mm - 120°C



DIHR 15826

**3319446 LAMP CAP GREEN 23x23 mm TERMOMETRO**



DIHR 15876

**3221192 LAMP SUPPORT**



DIHR 15827

**3319655 PUSH-BUTTON SQUARE GREEN 23x23 mm "DRAIN"**



DIHR 15854

**1319082 SINGLE-POLE PUSH BUTTON 16A 250V**



DIHR 15813

**3319317 ON-OFF 1 BUTTON**



DIHR 560512

DIHR 560527

DIHR 560527/A



Suitable for:

# DIHR



**3319672 OVAL KEY SUPPORT**



DIHR 89300

Suitable for:

**3319665 PUSH-BUTTON "ON-OFF" 23x13 mm**



DIHR 89340

**3319669 PUSH-BUTTON "START" HORIZONT. 23x13 mm**



DIHR 89341

**5028244 PUSH BUTTON SQUARE YELLOW 23X23 mm**  
silk-screen printing cold rinsing



DIHR 15856

**3319560 PUSH-BUTTON "DRAIN PUMP" 23x13 mm**



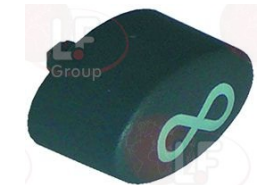
DIHR 89343

**3319563 PUSH-BUTTON "TWO PACES" 23x13 mm**



DIHR 89342

**3319575 PUSH-BUTTON CONTINUOUS CYCLE 23x13 mm**



DIHR 83346

DIHR 89346

**6227068 PUSH-BUTTON ELLIPTICAL 17x13 mm DARK GRA**



DIHR 84001

**3319573 PUSH-BUTTON PANEL 16A 250V**  
1 cold rinse button + 1 pilot light



DIHR 15899/B

**3221097 INDICATOR LIGHT NEUTRAL 220V**  
head ø 8 mm - 120°C



DIHR 15826



Suitable for:

**3319446 LAMP CAP GREEN 23x23 mm TERMOMETRO**



DIHR 15876

**3319574 PUSH-BUTTON PANEL 16A 250V**  
1 drain pump button + 1 pilot light



DIHR 15899/C

**3319446 LAMP CAP GREEN 23x23 mm TERMOMETRO**



DIHR 15876

**3319655 PUSH-BUTTON SQUARE GREEN 23x23 mm "DRAIN"**



DIHR 15854

**3600046 PUSH-BUTTON SMOOTH MATT WHITE ZB4BA1 SCHNEIDER**  
mounting hole  $\varnothing$  22 mm



DIHR 3002053

**3319092 PUSH-BUTTON 2-POLE GREEN 250V 16A**  
16(4)A 250V - max. temperature 120°C  
with indicator light - mounting hole 22x30 mm



DIHR 15049

## DIHR

Suitable for:

**3221192 LAMP SUPPORT**



DIHR 15827

**3221097 INDICATOR LIGHT NEUTRAL 220V**  
head  $\varnothing$  8 mm - 120°C



DIHR 15826

**3221192 LAMP SUPPORT**



DIHR 15827

**3319650 PUSH-BUTTON SQUARE YELLOW 23x23 mm "STAR"**



DIHR 15987





Suitable for:

**3319673 START KEY SUPPORT**



DIHR 89301

# DIHR



Suitable for:

**3319674 PUSH-BUTTON "START" VERTICAL 23x13 mm**



DIHR 89347

**3319414 START PUSH-BUTTON**



DIHR 560514

DIHR 560529/A

**3319558 SUPPORT FOR SWITCH**



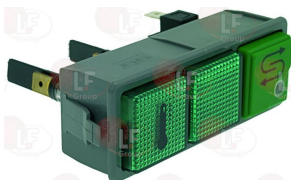
DIHR 89302

**3786505 ORM GASKET 0370-15 NBR**  
ring thickness 1.5 mm - internal  $\varnothing$  37.0 mm



DIHR 89332

**3319106 SWITCH BLOCK W/ 1 GREEN MONOPOLAR SWITCH**  
1 monopolar switch  
2 green indicator lamps 250V 16A



DIHR 15894

**3221097 INDICATOR LIGHT NEUTRAL 220V**  
head  $\varnothing$  8 mm - 120°C



DIHR 15826

**3221590 LAMP CAP GREEN 23x23 mm**



DIHR 15825

**3319446 LAMP CAP GREEN 23x23 mm TERMOMETRO**



DIHR 15876

**3221192 LAMP SUPPORT**



DIHR 15827



**3319107 SWITCH BLOCK W/ 1 GREEN MONOPOLAR SWITCH**

1 monopolar switch  
with green indicator light 250V 16A



DIHR 15899

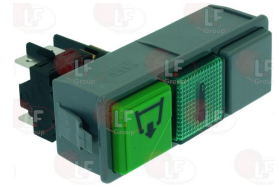
**3319446 LAMP CAP GREEN 23x23 mm TERMOMETRO**



DIHR 15876

**3319105 SWITCH BLOCK WITH 1 GREEN BIPOLAR SWITCH**

1 bipolar change over switch  
with green indicator light 250V



DIHR 15893

**3319446 LAMP CAP GREEN 23x23 mm TERMOMETRO**



DIHR 15876

**3319657 PUSH-BUTTON FISSO SQUARE GREY 23x23 mm**



DIHR 15880

Suitable for:

**3221097 INDICATOR LIGHT NEUTRAL 220V**

head ø 8 mm - 120°C



DIHR 15826

**3221192 LAMP SUPPORT**



DIHR 15827

**3221097 INDICATOR LIGHT NEUTRAL 220V**

head ø 8 mm - 120°C



DIHR 15826

**3221192 LAMP SUPPORT**



DIHR 15827

**3319655 PUSH-BUTTON SQUARE GREEN 23x23 mm "DRAIN"**



DIHR 15854

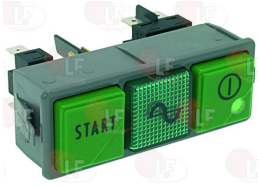


Suitable for:

# DIHR



**3319101 SWITCH WITH 2 BUTTONS AND 1 LAMP - GREEN**  
1 monopolar switch  
1 bipolar switch  
with indicator light 16A 250V



DIHR 15888

**3221097 INDICATOR LIGHT NEUTRAL 220V**  
head ø 8 mm - 120°C



DIHR 15826

**3319647 PUSH-BUTTON SQUARE GREEN 23x23mm "ON/OFF"**



DIHR 15857

DIHR 15874

**3319103 SWITCH WITH 2 BUTTONS AND 1 LAMP - GREEN**  
1 monopolar switch  
1 bipolar change over switch  
with indicator light 16A 250V



DIHR 15891

**3221097 INDICATOR LIGHT NEUTRAL 220V**  
head ø 8 mm - 120°C



DIHR 15826

Suitable for:

**3319920 BIPOLAR SWITCH BLACK 16A 250V**



DIHR 15812

**3221192 LAMP SUPPORT**



DIHR 15827

**1319082 SINGLE-POLE PUSH BUTTON 16A 250V**



DIHR 15813

**3319618 CHANGE-OVER SWITCH 16(4)A 250V**



DIHR 15811

**3221192 LAMP SUPPORT**



DIHR 15827



Suitable for:

**3319647 PUSH-BUTTON SQUARE GREEN 23x23mm "ON/OFF"**



DIHR 15857

DIHR 15874

## DIHR



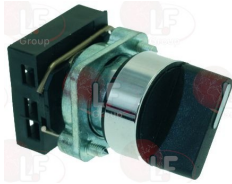
Suitable for:

**1319082 SINGLE-POLE PUSH BUTTON 16A 250V**



DIHR 15813

**3057298 SWITCH 0-1 POSITIONS ERSCE-BREMAS**



DIHR 2000311

DIHR 2000311-NEW

DIHR 2000311-OLD

**3454036 CONTACT ERSCE-BREMAS C10B  
NO - 6A 230V**



DIHR 3002054

**3319413 TIME SETTING PUSH-BUTTON**



DIHR 560530/A

**3319095 YELLOW MONOPOLAR SWITCH ROLD E2009**  
monopolar switch NO 16A 250V  
max temperature 125°C  
mounting hole 28x28 mm



DIHR 15859

**3319571 HOUSING FOR PUSH-BUTTON SQUARE GREY**  
mounting hole 28x28 mm - for push-button 23x23 mm



DIHR 15815

**3319715 PUSH-BUTTON SQUARE YELLOW 23x23 mm**



DIHR 15819

**1319082 SINGLE-POLE PUSH BUTTON 16A 250V**



DIHR 15813



Suitable for:

DIHR



Suitable for:

## Telethermometers

### 3441011 TELE-THERMOMETER BLACK 56x25 mm 0-120°C

plastic case  
capillary length 1500 mm  
bulb  $\varnothing$  6x15 mm



DIHR 1050005

### 3441076 TELE-THERMOMETER 63x11 mm 0-120°C

plastic case  
covered capillary 2000 mm  
bulb  $\varnothing$  6x33 mm



DIHR 1050011

### 5048086 SUPPORT THERMOMETERS



DIHR 89306

## Terminal blocks

### 3247016 TERMINAL BLOCK 3-POLES FV273 40A 450V

for cable max 6 mm<sup>2</sup>  
operating temperature 150°C  
nominal voltage 450 V



DIHR 500550

### 3247009 TERMINAL BLOCK 6-POLES FV122/B 40A 600V

for cable max 6 mm<sup>2</sup>  
operating temperature 150°C  
nominal voltage 450 V



DIHR 500551

## Thermostats

### 3444282 THERMOSTAT SINGLE-PHASE 90-110°C

with manual reset  
covered capillary 1500 mm  
bulb  $\varnothing$  6.5x95 mm  
15A 250V



DIHR 2000430

### 3444280 THERMOSTAT SINGLE-PHASE 0-90°C

covered capillary 1500 mm  
bulb  $\varnothing$  6.5x90 mm  
15A 250V  
with adjusting screw



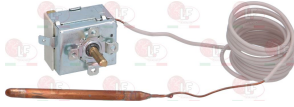
DIHR 10707/1





Suitable for:

**3444133 THERMOSTAT SINGLE-PHASE 30-90°C**  
 covered capillary 2200 mm  
 bulb  $\varnothing$  6.5x95 mm  
 15A 250V  
 D shaft  $\varnothing$  6x4.6 mm



DIHR 10707/2

Suitable for:

**3744075 THERMOSTAT TR2 0-280°C**  
 capillary length 960 mm  
 bulb  $\varnothing$  3x185 mm



DIHR 10707/3

## Timers

**3322347 ELECTRONIC TIMER 3 SETTINGS**  
 cycle 90"-120"-180"



DIHR DW50553

DIHR 50553

## Tubing and hoses

**3248208 BOTTOM WASH OUTLET SLEEVE**



DIHR 16168

**3248205 HOSE FOR WATER OUTLET**



DIHR 150048/A

**3248138 INLET PIPE**  
 internal  $\varnothing$  28 - length 70 mm



DIHR 10718

DIHR 17215

**3248140 INLET PIPE**  
 internal  $\varnothing$  30 and 33 mm  
 lunghezza totale 105 mm



DIHR 18787

**3248203 INLET PIPE**  
 external  $\varnothing$  70 mm - internal  $\varnothing$  58 mm



DIHR 25032

**3248210 INLET PIPE  $\varnothing$  50x50 mm**



DIHR 16169



Suitable for:

# DIHR



**3248105 OUTLET HOSE**  
internal  $\varnothing$  50 e 31 mm - dimensions 120x110 mm



DIHR M16170

DIHR 16170

DIHR 16170/M

**3248113 INLET PIPE**  
internal  $\varnothing$  58 e 50 mm - dimensions 125x125 mm



DIHR A15032

DIHR 15032/A

**3248139 OUTLET HOSE**  
internal  $\varnothing$  48/35/34 mm



DIHR 11600101

**3248206 OUTLET HOSE LOWER NEW**  
internal  $\varnothing$  30 mm - external  $\varnothing$  40 mm



DIHR 15033/A

**5028523 PRESSURE SWITCH SUCTION PIPE**



DIHR 10600208

**3248204 SLEEVE  $\varnothing$  28 mm TOP WASH**



DIHR 11600048

DIHR 18044

DIHR 18767

**3248180 STAR OUTLET HOSE**  
internal  $\varnothing$  30 mm - external  $\varnothing$  40 mm  
overall length 370 mm



DIHR 18788

**3248209 TOP WASH OUTLET SLEEVE**  
developed length 880 mm  
internal  $\varnothing$  30 mm - external  $\varnothing$  37 mm



DIHR 30002021

**3248207 TOP WASH SLEEVE**



DIHR 150048



## Wash and rinse arms for warewashers

**3743010 BOTTOM RINSE ARM ASSEMBLY 570 mm**



DIHR 80201  
DIHR 88115  
DIHR 90003

DIHR 80202  
DIHR 88116

DIHR 80915  
DIHR 88918

**3743009 CAP FOR RINSE PIPE**  
thread  $\varnothing$  9 mm



DIHR 560017

**3743756 DRUM FOR WASH IMPELLER**



DIHR 10650

**3501108 RINSE JET STAINL. STEEL**  
thread  $\varnothing$  5 mm



DIHR 560018

**3743361 PIN FOR RINSE ARM ASSEMBLY**



DIHR 10651

**3743855 RINSE SCREW M4**



DIHR 10652

**3743248 BOTTOM WASH AND RINSE ARM ASSEMBLY**



DIHR 16950  
DIHR 540998

DIHR 16951  
DIHR 540999

DIHR 400906

**3501203 BIG HOLE OPEN RINSE JET**  
complete with gasket



DIHR 10357

DIHR 10369

**3243384 BUSHING FOR WASH ARM ASSEMBLY  $\varnothing$  14x11 mm**



DIHR 13319

**3501202 CLOSED RINSE JET**  
with "O" ring



DIHR 10372

DIHR 12538



Suitable for:

**3501204 CLOSED RINSE JET**



DIHR 10358

DIHR 10370

**1186352 O-RING 02050 EPDM**  
ring thickness 1.78 mm - internal  $\varnothing$  12.42 mm



DIHR 13009

DIHR 13017

**3243472 WASH ARM ASSEMBLY LOCKING NUT**



DIHR 10365

DIHR 10377

**3743752 CAP FOR TOP WASH 20 mm**



DIHR 12503

**3243402 COMPLETE RINSE ARM ASSEMBLY 480 mm**

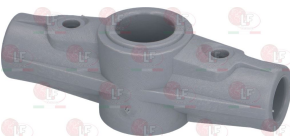


DIHR 10600913

DIHR 75061

DIHR 75069

**3743756 DRUM FOR WASH IMPELLER**



DIHR 10650

# DIHR



Suitable for:

**1186411 O-RING 02031 EPDM**  
ring thickness 1.78 mm - internal  $\varnothing$  7.66 mm



DIHR 13002

**3501201 OPEN RINSE JET**



DIHR 10371

DIHR 12537

**3743009 CAP FOR RINSE PIPE**  
thread  $\varnothing$  9 mm



DIHR 560017

**3743361 PIN FOR RINSE ARM ASSEMBLY**



DIHR 10651



Suitable for:

**3501108 RINSE JET STAINL. STEEL**  
thread  $\varnothing$  5 mm



DIHR 560018

**3243352 LOWER WASH AND RINSE ARM ASSEMBLY**  
length 370 mm



DIHR 18955

DIHR 18995

DIHR 18996

**3501202 CLOSED RINSE JET**  
with "O" ring



DIHR 10372

DIHR 12538

**1186411 O-RING 02031 EPDM**  
ring thickness 1.78 mm - internal  $\varnothing$  7.66 mm



DIHR 13002

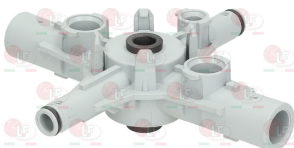
**3501201 OPEN RINSE JET**



DIHR 10371

DIHR 12537

**3243471 WASH ARM ASSEMBLY BOSS**  
complete with bushings



DIHR 10364

DIHR 10376

# DIHR



Suitable for:

**3743855 RINSE SCREW MA5**



DIHR 10652

**3243384 BUSHING FOR WASH ARM ASSEMBLY  $\varnothing$  14x11 mm**



DIHR 13319

**3501204 CLOSED RINSE JET**



DIHR 10358

DIHR 10370

**1186352 O-RING 02050 EPDM**  
ring thickness 1.78 mm - internal  $\varnothing$  12.42 mm



DIHR 13009

DIHR 13017

**3501205 SMALL HOLE OPEN RINSE JET**



DIHR 10366

DIHR 10378

**3243472 WASH ARM ASSEMBLY LOCKING NUT**



DIHR 10365

DIHR 10377



Suitable for:

Suitable for:

**3243356 LOWER WASH AND RINSE ARM ASSEMBLY**  
length 400 mm

**3243384 BUSHING FOR WASH ARM ASSEMBLY  $\varnothing$  14x11 mm**



DIHR 400909

DIHR 540995

DIHR 540996

DIHR 13319

**3501202 CLOSED RINSE JET**  
with "O" ring

**3501204 CLOSED RINSE JET**



DIHR 10372

DIHR 12538

DIHR 10358

DIHR 10370

**1186411 O-RING 02031 EPDM**  
ring thickness 1.78 mm - internal  $\varnothing$  7.66 mm

**1186352 O-RING 02050 EPDM**  
ring thickness 1.78 mm - internal  $\varnothing$  12.42 mm



DIHR 13002

DIHR 13009

DIHR 13017

**3501201 OPEN RINSE JET**

**3501205 SMALL HOLE OPEN RINSE JET**



DIHR 10371

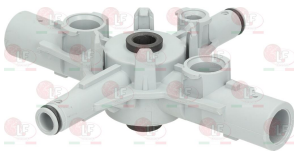
DIHR 12537

DIHR 10366

DIHR 10378

**3243471 WASH ARM ASSEMBLY BOSS**  
complete with bushings

**3243472 WASH ARM ASSEMBLY LOCKING NUT**



DIHR 10364

DIHR 10376

DIHR 10365

DIHR 10377

**3743663 RINSE ARM ASSEMBLY**  
for dishwasher ACQUA PULITA model

**3743009 CAP FOR RINSE PIPE**  
thread  $\varnothing$  9 mm



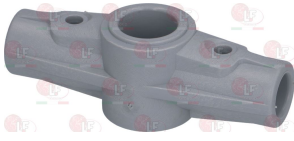
DIHR 540083

DIHR 560017



Suitable for:

**3743756 DRUM FOR WASH IMPELLER**



DIHR 10650

**3743682 RINSE AXLE**



DIHR 75323

**3743855 RINSE SCREW MA5**



DIHR 10652

**3743751 RINSE ARM ASSEMBLY UNIT**



DIHR 10601

DIHR 10601/A

**3743669 RINSE ARM ASSEMBLY 465 mm**



DIHR 75920

**1186411 O-RING 02031 EPDM**  
ring thickness 1.78 mm - internal  $\varnothing$  7.66 mm



DIHR 13002

## DIHR

Suitable for:

**3743361 PIN FOR RINSE ARM ASSEMBLY**



DIHR 10651

**3501108 RINSE JET STAINL. STEEL**  
thread  $\varnothing$  5 mm



DIHR 560018

**3501202 CLOSED RINSE JET**  
with "O" ring



DIHR 10372

DIHR 12538

**3501201 OPEN RINSE JET**



DIHR 10371

DIHR 12537





Suitable for:

**3743361 PIN FOR RINSE ARM ASSEMBLY**



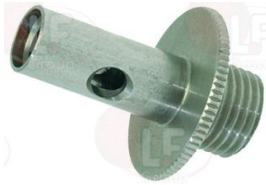
DIHR 10651

**7103454 RINSE ARM SX 216 mm**  
for WAREWASHERS DW115E



DIHR 75920/S

**3743682 RINSE AXLE**



DIHR 75323

**7102396 RINSE ARM ASSEMBLY 656 mm**



DIHR 91103

**3743756 DRUM FOR WASH IMPELLER**



DIHR 10650

**3501108 RINSE JET STAINL. STEEL**  
thread  $\varnothing$  5 mm



DIHR 560018

## DIHR

Suitable for:

**7102181 RINSE ARM DX 216 mm**  
for WAREWASHERS



DIHR 75920/D

**7100967 RINSE ARMS DRUM**



DIHR 75920/A

**3743855 RINSE SCREW MA5**



DIHR 10652

**3743009 CAP FOR RINSE PIPE**  
thread  $\varnothing$  9 mm



DIHR 560017

**3743361 PIN FOR RINSE ARM ASSEMBLY**



DIHR 10651

**3743855 RINSE SCREW MA5**



DIHR 10652







# DIHR



Suitable for:

Suitable for:

**3243365 RINSE ARM CAP**



DIHR 2906450

**3743008 STAINLESS STEEL WASH ARM ASSEMBLY 530 mm**



DIHR 10600900

DIHR 11600023

**3743018 FLOW RETAINING RING**



DIHR 10600011/A

DIHR 11600033

**3743151 WASH ARM DRUM**



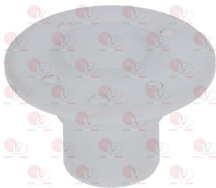
DIHR 10600903

**3743002 STAINLESS STEEL WASH ARM ASSY 530 mm**



DIHR 75915

**3743003 DRUM FOR WASH IMPELLER**  
height 31 mm



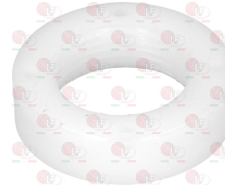
DIHR 75320

**3743003 DRUM FOR WASH IMPELLER**  
height 31 mm



DIHR 75320

**3743004 NUT FOR SUPPORT DRUM**



DIHR 75317

**3528074 WASHER OF STAINLESS STEEL  $\varnothing$  48x16 mm**



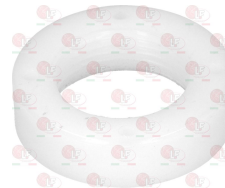
DIHR 10600011

**3743016 DRUM FOR IMPELLER**  
height 47 mm



DIHR 75316

**3743004 NUT FOR SUPPORT DRUM**



DIHR 75317



Suitable for:

3743149 SPACER FOR DRUM ø 22x17x15 mm



DIHR 75321

# DIHR



Suitable for:

5018192 SPACER IMPELLER DRUM ø 22x26 mm



DIHR 550220

3243401 UPPER RINSE ARM ASSEMBLY 300 mm



DIHR 10910  
DIHR 10997

DIHR 10992

DIHR 10996

1186411 O-RING 02031 EPDM  
ring thickness 1.78 mm - internal ø 7.66 mm



DIHR 13002

3743014 SLIDING BUSH PTFE  
ø internal 10 mm.  
ø external 14 mm.



DIHR 13320

3243359 WASH AND RINSE ARM ASSEMBLY LOW  
length 455 mm



DIHR 26957

3501227 CLOSED JET



DIHR 10217

DIHR 10267

3243384 BUSHING FOR WASH ARM ASSEMBLY ø 14x11 mm



DIHR 13319

3501201 OPEN RINSE JET



DIHR 10371

DIHR 12537

3243472 WASH ARM ASSEMBLY LOCKING NUT



DIHR 10365

DIHR 10377

3243384 BUSHING FOR WASH ARM ASSEMBLY ø 14x11 mm



DIHR 13319

3243992 FIXING SCREW STAINLESS STEEL RETAINER



DIHR 11101/B

DIHR 11101/I



Suitable for:

**3243997 IMPELER DRUM 4 WAYS SMALL SIZE**  
complete with bushes



DIHR 10208

DIHR 10258

**3243367 JET COMPLETE FOR WASH ARM**



DIHR 10264

DIHR 10746

DIHR 10746/A

**1186421 O-RING 02018 EPDM**  
ring thickness 1.78 mm - internal  $\varnothing$  4.48 mm



DIHR 13016

**3243374 OPEN RINSE JET  $\varnothing$  10 mm**  
for wash assembly boss



DIHR 10213

DIHR 10263

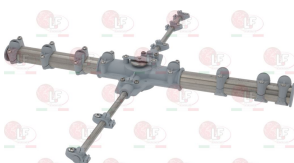
**3243371 RINSE ARM CAP**



DIHR 12527

DIHR 12532

**3243360 WASH AND RINSE ARM ASSEMBLY 490 mm**



DIHR 15956

DIHR 15958

DIHR 75910

## DIHR

Suitable for:

**3243368 JET COMPLETE FOR RINSE ARM**



DIHR 10262

DIHR 12528

**3243993 NUT BLOCKING PLATE FOR IMPELLER**



DIHR 10210

DIHR 10260

**1186352 O-RING 02050 EPDM**  
ring thickness 1.78 mm - internal  $\varnothing$  12.42 mm



DIHR 13009

DIHR 13017

**3243373 OPEN WASH JET  $\varnothing$  18 mm**



DIHR 10212

DIHR 10266

**3243369 WASH ARM CAP  $\varnothing$  18 mm**



DIHR 10206

DIHR 10256

**3243375 BLANK WASH JET  $\varnothing$  18 mm**  
for wash assembly boss



DIHR 10216

DIHR 10265





Suitable for:

**3243384 BUSHING FOR WASH ARM ASSEMBLY  $\varnothing$  14x11 mm**



DIHR 13319

**3243992 FIXING SCREW STAINLESS STEEL RETAINER**



DIHR 11101/B

DIHR 11101/I

**3243368 JET COMPLETE FOR RINSE ARM**



DIHR 10262

DIHR 12528

**3243993 NUT BLOCKING PLATE FOR IMPELLER**



DIHR 10210

DIHR 10260

**3243382 O-RING 02087 EPDM**  
ring thickness 1.78 mm - internal  $\varnothing$  21.95 mm



DIHR 13018

**3243378 OPEN WASH JET  $\varnothing$  28 mm**  
for wash assembly boss



DIHR 10218

DIHR 10268

## DIHR

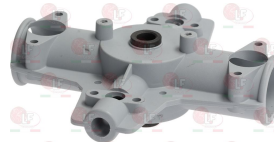
Suitable for:

**3501227 CLOSED JET**



DIHR 10217

**3243996 IMPELLER DRUM 4 WAYS LARGE SIZE**  
complete with bushes



DIHR 10267

DIHR 10209

**3243377 JET COMPLETE FOR WASH ARM**



DIHR 10259

DIHR 10211

**1186421 O-RING 02018 EPDM**  
ring thickness 1.78 mm - internal  $\varnothing$  4.48 mm



DIHR 13016

**3243374 OPEN RINSE JET  $\varnothing$  10 mm**  
for wash assembly boss



DIHR 10213

**3243381 PLASTIC END CAP  $\varnothing$  26 mm**  
for wash arm



DIHR 10263

DIHR 10207

DIHR 10257





Suitable for:

**3243371 RINSE ARM CAP**



DIHR 12527

DIHR 12532

# DIHR

Suitable for:



**3743664 WASH ARM ASSEMBLY**



DIHR 500700

**3743758 NUT FOR IMPELLER DRUM**



DIHR 500702

**3743230 WASH ARM ASSEMBLY HEAD**



DIHR 10200121

**3743662 WASH ARM LOWER**  
for dishwasher ACQUA PULITA model



DIHR 540084

**7100339 WASH ARM 6 NOZZLES BAYONETT**



DIHR 3004147

**3743757 NUT FOR IMPELLER**  
internal hole  $\varnothing$  16 mm - height 18.5 mm



DIHR 500701

**5018192 SPACER IMPELLER DRUM  $\varnothing$  22x26 mm**



DIHR 550220

**5025263 DRUM TOP stainless steel IMPELLER**  
external  $\varnothing$  46 mm



DIHR 540078

**3743754 CAP FOR END JET**

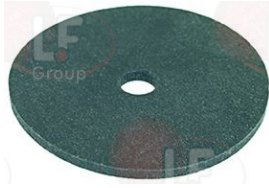


DIHR 80304



Suitable for:

**3186437 GASKET FLAT EPDM  $\varnothing$  40x5.5x2 mm**  
for terminal cap



DIHR 80305

**5013846 WASH IMPELLER CAP**



DIHR 3003029

**3243400 WASH/RINSE ARM ASSEMBLY LOWER**  
length 370 mm



DIHR 10904  
DIHR 10999

DIHR 10991

DIHR 10998

**3501203 BIG HOLE OPEN RINSE JET**  
complete with gasket



DIHR 10357

DIHR 10369

**3243384 BUSHING FOR WASH ARM ASSEMBLY  $\varnothing$  14x11 mm**



DIHR 13319

**3501204 CLOSED RINSE JET**



DIHR 10358

DIHR 10370

**1186352 O-RING 02050 EPDM**  
ring thickness 1.78 mm - internal  $\varnothing$  12.42 mm



DIHR 13009

DIHR 13017

# DIHR

Suitable for:



**3501202 CLOSED RINSE JET**  
with "O" ring



DIHR 10372

DIHR 12538

**1186411 O-RING 02031 EPDM**  
ring thickness 1.78 mm - internal  $\varnothing$  7.66 mm



DIHR 13002

**3501201 OPEN RINSE JET**



DIHR 10371

DIHR 12537



Suitable for:

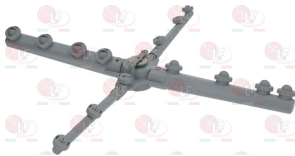
**3243471 WASH ARM ASSEMBLY BOSS**  
complete with bushings



DIHR 10364

DIHR 10376

**3743763 WASH/RINSE UNIT ø 490 mm**



DIHR 500750

**3243384 BUSHING FOR WASH ARM ASSEMBLY ø 14x11 mm**



DIHR 13319

**3243992 FIXING SCREW STAINLESS STEEL RETAINER**



DIHR 11101/B

DIHR 11101/I

**1186411 O-RING 02031 EPDM**  
ring thickness 1.78 mm - internal ø 7.66 mm



DIHR 13002

**3501201 OPEN RINSE JET**



DIHR 10371

DIHR 12537

## DIHR

Suitable for:

**3243472 WASH ARM ASSEMBLY LOCKING NUT**



DIHR 10365

DIHR 10377

**3501203 BIG HOLE OPEN RINSE JET**  
complete with gasket



DIHR 10357

DIHR 10369

**3501202 CLOSED RINSE JET**  
with "O" ring



DIHR 10372

DIHR 12538

**3243993 NUT BLOCKING PLATE FOR IMPELLER**



DIHR 10210

DIHR 10260

**1186352 O-RING 02050 EPDM**  
ring thickness 1.78 mm - internal ø 12.42 mm



DIHR 13009

DIHR 13017

**5050300 RINSE ARM LH 185 mm**



DIHR 500752





Suitable for:

**5050299 RINSE ARM RH 185 mm**



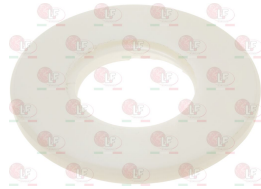
DIHR 500751

**5063515 WASH ARM RH 218 mm**



DIHR 500753

**5057091 WASHER SLIDING ø 24.5 mm  
in arnite**



DIHR 90031

# DIHR



Suitable for:

**7101685 WASH ARM LH 218 mm**



DIHR 500754

**7101684 WASH/RINSE ASSEMBLY**



DIHR 500755

## Wash jets and accessories

**3243364 JET COMPLETE FOR RINSE ARM ASSEMBLY**



DIHR 2902811

**3501226 STAINLESS STEEL JET**



DIHR 2200114

**3743761 STRAIGHT WASH JET**



DIHR 80300

**3086001 RING NUT 3/8" F WITH MESH**

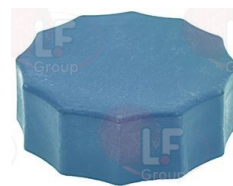


DIHR

DIHR 2200116

DIHR 2200117

**3743754 CAP FOR END JET**



DIHR 80304





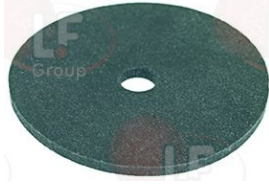
Suitable for:

**3743760 COLLAR FOR WASH JET**



DIHR 80303

**3186437 GASKET FLAT EPDM  $\varnothing$  40x5.5x2 mm**  
for terminal cap



DIHR 80305

**3243383 WASH JET COMPLETE**  
for fixed arm



DIHR 18135

## DIHR



Suitable for:

**3743762 COLLAR FOR WASH JET**



DIHR 80301

## Washing baskets and accessories

**3055016 ANGLE FOOT FOR BASKET 120x120 mm**  
colour: white  
to change glass racks from NORMAL to STACKABLE  
4 pieces are required



DIHR 10768

**3055013 CUTLERY INSERT RACK  $\varnothing$  110x125 mm**  
in plastic covered net



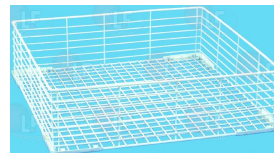
DIHR 15060

**3055452 CUTLERY RACK 500x500x106 mm**  
in plastic



DIHR C41

**3055672 GLASS BASKET 500x500x130 mm**



DIHR

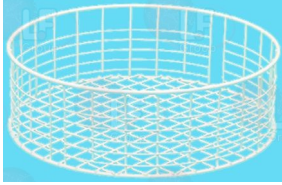


Suitable for:

# DIHR



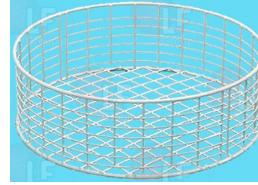
**3055233 GLASS RACK  $\varnothing$  350x110 mm**  
in plastic covered wire



DIHR C21

Suitable for:

**3055242 GLASS RACK  $\varnothing$  370x120 mm**  
in plastic covered iron



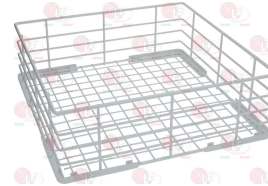
DIHR C07

**3055234 GLASS RACK  $\varnothing$  400x140 mm**  
in plastic covered wire



DIHR C16

**3055230 GLASS RACK 350x350x115 mm**  
in plastic covered wire



DIHR 10730

**3055231 GLASS RACK 370x370x125 mm**  
large meshed



DIHR C10

**3055238 GLASS RACK 400x400x135 mm**  
in plastic covered wire



DIHR C08

DIHR C121

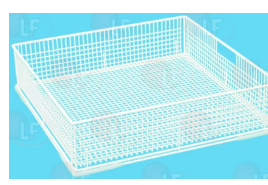
**3055369 GLASS RACK 450x450x140 mm**  
in plastic covered wire



DIHR C75

DIHR C77

**3055010 GLASS RACK 500x500x120 mm**  
in plastic covered wire



DIHR C09

DIHR C44

**3055367 INSERT FOR ROUND BASKET 400x400 mm**  
plastic covered wire



DIHR C38

DIHR DWC38

**3055232 PLATE RACK 370x370x100 mm**  
for 10 plates  
in plastic covered wire



DIHR C03



# DIHR



Suitable for:

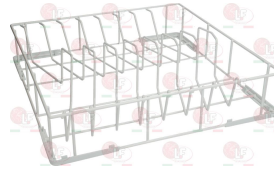
**3055239 PLATE RACK 400x400x80 mm**  
for 12 PLATES  
in plastic covered wire



DIHR C31

Suitable for:

**3055237 PLATE RACK 450x450x100 mm**  
for 14 plates  
in plastic covered wire



DIHR C76

**3055698 SAUCER RACK 300x100x85 mm**  
made of plasticized wire - for 14 saucers



DIHR 10728

**3055697 SUPPORT FOR BASKET ø 37 mm**  
dimensions 365x365 mm



DIHR C37

**3055453 TRAYS BASKET 500x500x106 mm**



DIHR C43

## Watertight seals and rings

**5017523 SEALING RING 42x30x7 mm**  
double lip retainer



DIHR 13024

The data herewith contained may change without notice and LF SpA cannot be held responsible for possible errors stated or resulting by the use of this document. All rights reserved. No part of this publication may be reproduced without written permission by LF SpA.



## Distributing Components, Spare Parts & Accessories in original quality worldwide

- 
- LF SpA HEADQUARTERS**  
via Voltri, 80 - 47522 Cesena (FC) ITALY  
Tel. +39 0547 34 11 11 - Fax +39 0547 34 11 10  
[www.lfircambi724.it](http://www.lfircambi724.it) - [info@lfircambi.it](mailto:info@lfircambi.it)  
Export Dept. Tel. +39 0547 34 11 50 - Fax +39 0547 34 11 55  
[www.lfspareparts724.com](http://www.lfspareparts724.com) - [export@lfspareparts.com](mailto:export@lfspareparts.com)
- LF SpA HOUSEHOLD COMPONENTS DIVISION**  
Via Padriciano, 99 - AREA Science Park - 34149 Trieste (TS) ITALY  
Tel. +39 0547 34 12 42 - Fax +39 0547 34 12 48  
[www.lfspareparts724.com](http://www.lfspareparts724.com) - [info@lfspareparts.com](mailto:info@lfspareparts.com)
- EPGC Sas FRANCE**  
13, Rue des Forts - 59960 Neuville en Ferrain  
Tel. +33 (0)3 20 25 06 21 - Fax +33 (0)3 20 25 34 12  
[www.epgc.com](http://www.epgc.com) - [epgc@epgc.com](mailto:epgc@epgc.com)
- LF GmbH GERMANY**  
Junkersstrasse, 3 - D-82178 Puchheim - München  
Tel. +49 89 89 45 78 66 - Fax +49 89 89 45 78 88  
[www.lfersatzteile724.de](http://www.lfersatzteile724.de) - [info@lfersatzteile.de](mailto:info@lfersatzteile.de)
- LF China REPUBLIC OF CHINA**  
Room 403, No.2, Huadu Mansion, Lane 422, Huanghua Rd.  
Minhang Dist. - 201103 Shanghai  
Tel. +86 (0)21 33 53 66 31 - Fax +86 (0)21 33 53 66 32  
[www.lfspareparts724.com](http://www.lfspareparts724.com) - [china@lfspareparts.com](mailto:china@lfspareparts.com)
- OOO LF RUSSIAN FEDERATION**  
Ul. Anatoliya Zhivova, 8 - office 1 - 123100 Moscow  
Tel./Fax +7 495 725 26 53  
[www.lfspareparts724.ru](http://www.lfspareparts724.ru) - [info@lfspareparts.ru](mailto:info@lfspareparts.ru)
- LF Repuestos Horeca S.L.U. SPAIN**  
Poligono Industrial Carpetania - C/Miguel Faraday, 8 - 28906 Getafe  
Tel. +34 91 477 91 00 - Fax +34 91 477 90 81  
[www.lfrepuestos-horeca724.es](http://www.lfrepuestos-horeca724.es) - [info@lfrepuestos.es](mailto:info@lfrepuestos.es)
- LF Scandinavia Aps - LF Spareparts S.p.A. DENMARK**  
Nupark, 51 - 7500 Holstebro  
Tel. +45 70 70 77 33  
[www.lfspareparts724.dk](http://www.lfspareparts724.dk) - [denmark@lfspareparts.dk](mailto:denmark@lfspareparts.dk)
- LF SpA Cesena (IT) Swiss Branch Steinhausen SWITZERLAND**  
Sennweidstrasse, 45 - CH-6312 Steinhausen  
Tel. +41 (0)41 760 15 80/1 - Fax +41 (0)41 760 15 85  
[www.lfersatzteile724.ch](http://www.lfersatzteile724.ch) - [info@lfersatzteile.ch](mailto:info@lfersatzteile.ch)
- LF Spare Parts Ltd. UNITED KINGDOM**  
A10a Lakeside Business Park, Broadway Lane  
South Cerney, Gloucestershire GL7 5XL  
Tel. +44 (0)1285 86 16 25 - Fax +44 (0)1285 86 39 49  
[www.lfspareparts724.co.uk](http://www.lfspareparts724.co.uk) - [info@lfspareparts.co.uk](mailto:info@lfspareparts.co.uk)
- LF Central Est Europe S.r.o. CZECH REPUBLIC**  
Antala Staska 1859/34  
14000 Praha 4 - KRC  
Tel. +420 730 156 910  
[www.lfspareparts724.cz](http://www.lfspareparts724.cz) - [info@lfspareparts.cz](mailto:info@lfspareparts.cz)
- LF SPARE PARTS INC. USA**  
**Legal address:**  
155 Office Plaza Dr - Suite A - Tallahassee, FL 32301  
**Business/Mailing address:**  
1100 South Tower, 225 Peachtree St., N.E. - Atlanta, GA 30303, USA  
Tel. +1-404-525-2600 - Fax +1-404-586-3528  
[www.lfspareparts724.us](http://www.lfspareparts724.us) - [info@lfspareparts.us](mailto:info@lfspareparts.us)  
Tel. West Coast and Midwest: 206-349-1525 Sauro  
Tel. East Coast and the Caribbean: 786-817-1764 Luis
- 
- AUSTRALIA AND NEW ZEALAND**  
[www.lfspareparts724.com](http://www.lfspareparts724.com)  
[andrea.calvio@lfspareparts.com](mailto:andrea.calvio@lfspareparts.com)
- AUSTRIA**  
[www.lfersatzteile724.at](http://www.lfersatzteile724.at)  
[info@lfersatzteile.at](mailto:info@lfersatzteile.at)
- BALKAN COUNTRIES**  
[www.lfspareparts724.com](http://www.lfspareparts724.com)  
[matija.ramov@lfspareparts.com](mailto:matija.ramov@lfspareparts.com)
- BALTIC COUNTRIES**  
[www.lfspareparts724.com](http://www.lfspareparts724.com)  
[inara.silina@lfspareparts.com](mailto:inara.silina@lfspareparts.com)
- LATIN AMERICA AND THE CARRIBEANS**  
[www.lfrepuestos-horeca724.es](http://www.lfrepuestos-horeca724.es)  
[export@lfrepuestos.es](mailto:export@lfrepuestos.es)
- POLAND**  
[www.lfspareparts724.pl](http://www.lfspareparts724.pl)  
[info@lfspareparts.pl](mailto:info@lfspareparts.pl)
- SOUTH KOREA**  
[www.lfspareparts724.com](http://www.lfspareparts724.com)  
[fabio.doni@lfspareparts.com](mailto:fabio.doni@lfspareparts.com)
- TURKEY**  
[www.lfyedekparca724.com](http://www.lfyedekparca724.com)  
[export@lfspareparts.com](mailto:export@lfspareparts.com)