



Spare parts for the professional sector: Warewashing equipment



Suitable for:

BODSON



This catalogue is automatically generated.
Therefore, the sequence of the items might
not be always shown at best.
Updates will be issued in case of additions
and/or amendments.
Suitable universal spare parts may not be included

Rel. 2018-02231719





Suitable for:

BODSON



Suitable for:

Ball valves and accessories

3356151 DRAIN CONTROL TRIANGLE
for Pan/utensilwashing machines (BODSON) C63



BODSON B120629

3356150 PVC DRAIN VALVE FOR PIPE \varnothing 40 mm
for Pan/utensilwashing machines (BODSON) C63



BODSON 301924

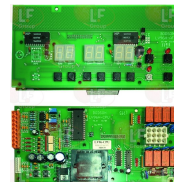
Electronic boards

3390377 DIAPHRAGM KEYBOARD
for Pan/utensilwashing machines (BODSON) C63 - C87
PA53 - PA63 - PA87



BODSON 301766

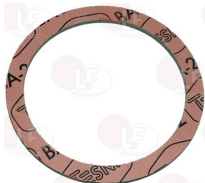
3390378 PC BOARD HORIZONTAL
pc board type LV96H-AFF and LV96H-CPU
for Pan/utensilwashing machines (BODSON) C63 - C87
PA53 - PA63 - PA87
for Pan/utensilwashing machines (BODSON) 27B



BODSON 301943

Gaskets and seals

3786702 GASKET FLAT ASBESTOS FREE \varnothing 93x77x3mm
for HEATING ELEMENT
for Pan/utensilwashing machines (BODSON) C63 - C87
PA53 - PA63 - PA87



BODSON 202934

Heating elements

3455459 HEATING ELEMENT 3000W 230/400V
immersed length 235 mm
flange \varnothing 2"1/2 (75 mm)
for Pan/utensilwashing machines (BODSON) C63
PA53 - PA63



BODSON 301378

3455457 HEATING ELEMENT 6000W 230/400V
immersed length 280 mm
flange \varnothing 2"1/2 (75 mm)
for Pan/utensilwashing machines (BODSON) C6H - C63
PA53 - PA63
for Pan/utensilwashing machines (BODSON) C6H



BODSON 302260

3455458 HEATING ELEMENT 6000W 230/400V
immersed length 370 mm
flange \varnothing 2"1/2 (75 mm)
for Pan/utensilwashing machines (BODSON) C87
PA87



BODSON 301377

Indicator lights

3221164 INDICATOR LIGHT GREEN 230V
head \varnothing 7 mm - hole \varnothing 6 mm - 120°C
dashboard mounting
for Pan/utensilwashing machines (BODSON) PA68



BODSON SAVBOD

Microswitches, magnetic

3803065 MAGNETIC CONTACT F/DOOR LIMIT SWITCH
SCHMERSAL BN 310-10Z 3A 120W 1NO
for Pan/utensilwashing machines (BODSON) PA53



BODSON 301892

Position switches

3803064 MICROSWITCH TELEMECANIQUE ZCMD25
1.5A 400V
for Pan/utensilwashing machines (BODSON) C63 - C87
PA63 - PA87



BODSON 302081



Suitable for:

BODSON



Suitable for:

Pressure switches

3320212 PRESSURE SWITCH 1 LEVEL
calibration 205/95 mm



BODSON 700511

3320244 PRESSURE SWITCH 1 LEVEL
calibration 80/20 mm
for Pan/utensilwashing machines (BODSON) C63 - C87
PA53 - PA63 - PA87



BODSON 301844

Probes

3397203 WASHING/RINSE TEMPERATURE PROBE
cable length 5 m bulb length 23x8mm
value 1800ohms
for Pan/utensilwashing machines (BODSON) C63 - C87
PA53 - PA63 - PA87



BODSON 301900

Solenoid valves

3120565 DANFOSS VALVE EV220B 1/2FF
without coil size 80 mm
for Pan/utensilwashing machines (BODSON) C63 - C87
PA53 - PA63 - PA87
for Pan/utensilwashing machines (BODSON) C3PA



BODSON 301537

3120566 DANFOSS COIL 24V 18W
without connector 018F7358
for Pan/utensilwashing machines (BODSON) C63 - C87
PA53 - PA63 - PA87
for Pan/utensilwashing machines (BODSON) C3PA



BODSON 301542

Supports

3391068 DOOR WING STOPPER
external \varnothing 30 mm - internal \varnothing 11 mm - h 17 mm
for Pan/utensilwashing machines (BODSON) C63



BODSON B140079

3391067 RING NUT FOR RINSE DRUM
external \varnothing 25 mm internal \varnothing 17 mm
for Pan/utensilwashing machines (BODSON) C63 - C87
PA53 - PA63 - PA87



BODSON 700311

Suitable for:

3391064 RING NUT SLIDING
external \varnothing 97 mm - internal \varnothing 70 mm - height 24 mm
for Pan/utensilwashing machines (BODSON) C63 - C87
PA63 - PA87



BODSON B151068

BODSON 700310

Suitable for:

3391066 RING NUT SLIDING
external \varnothing 71 mm - internal \varnothing 56 mm
for Pan/utensilwashing machines (BODSON) PA53



BODSON B141039

3391065 SMOOTH BEARING FOR WASHING DRUM
external \varnothing 23 mm - internal \varnothing 21 mm - height 20 mm
for Pan/utensilwashing machines (BODSON) C63 - C87
PA53 - PA63 - PA87



BODSON 600804

3391063 WASHING DRUM BEARING
external \varnothing 30 mm - internal \varnothing 21 mm
for Pan/utensilwashing machines (BODSON) C63 - C87
PA53 - PA63 - PA87



BODSON 600803

Transformers

3739029 TRANSFORMER PRIM 230-400V SEC 2x24V
power 190 VA
for Pan/utensilwashing machines (BODSON) C63 - C87
PA63 - PA87



BODSON 301783

Wash and rinse arms for warewashers

3743854 WASHER 20x35x3 mm
for Pan/utensilwashing machines (BODSON) C63 - C87
PA53 - PA63 - PA87



BODSON 203479



Suitable for:

BODSON



Suitable for:

Wash jets and accessories

3501256 RINSE NOZZLE

for Pan/utensilwashing machines (BODSON) C63 - C87
PA53 - PA63 - PA87
for Dishwasher (BODSON) A3700
for Pan/utensilwashing machines (BODSON) C3PA



BODSON 600843

The data herewith contained may change without notice and LF SpA cannot be held responsible for possible errors stated or resulting by the use of this document. All rights reserved. No part of this publication may be reproduced without written permission by LF SpA.



Distributing Components, Spare Parts & Accessories in original quality worldwide

-
- LF SpA HEADQUARTERS**
via Voltri, 80 - 47522 Cesena (FC) ITALY
Tel. +39 0547 34 11 11 - Fax +39 0547 34 11 10
www.lfircambi724.it - info@lfircambi.it
Export Dept. Tel. +39 0547 34 11 50 - Fax +39 0547 34 11 55
www.lfspareparts724.com - export@lfspareparts.com
- LF SpA HOUSEHOLD COMPONENTS DIVISION**
Via Padriciano, 99 - AREA Science Park - 34149 Trieste (TS) ITALY
Tel. +39 0547 34 12 42 - Fax +39 0547 34 12 48
www.lfspareparts724.com - info@lfspareparts.com
- EPGC Sas FRANCE**
13, Rue des Forts - 59960 Neuville en Ferrain
Tel. +33 (0)3 20 25 06 21 - Fax +33 (0)3 20 25 34 12
www.epgc.com - epgc@epgc.com
- LF GmbH GERMANY**
Junkersstrasse, 3 - D-82178 Puchheim - München
Tel. +49 89 89 45 78 66 - Fax +49 89 89 45 78 88
www.lfersatzteile724.de - info@lfersatzteile.de
- LF China REPUBLIC OF CHINA**
Room 403, No.2, Huadu Mansion, Lane 422, Huanghua Rd.
Minhang Dist. - 201103 Shanghai
Tel. +86 (0)21 33 53 66 31 - Fax +86 (0)21 33 53 66 32
www.lfspareparts724.com - china@lfspareparts.com
- OOO LF RUSSIAN FEDERATION**
Ul. Anatoliya Zhivova, 8 - office 1 - 123100 Moscow
Tel./Fax +7 495 725 26 53
www.lfspareparts724.ru - info@lfspareparts.ru
- LF Repuestos Horeca S.L.U. SPAIN**
Poligono Industrial Carpetania - C/Miguel Faraday, 8 - 28906 Getafe
Tel. +34 91 477 91 00 - Fax +34 91 477 90 81
www.lfrepuestos-horeca724.es - info@lfrepuestos.es
- LF Scandinavia Aps - LF Spareparts S.p.A. DENMARK**
Nupark, 51 - 7500 Holstebro
Tel. +45 70 70 77 33
www.lfspareparts724.dk - denmark@lfspareparts.dk
- LF SpA Cesena (IT) Swiss Branch Steinhausen SWITZERLAND**
Sennweidstrasse, 45 - CH-6312 Steinhausen
Tel. +41 (0)41 760 15 80/1 - Fax +41 (0)41 760 15 85
www.lfersatzteile724.ch - info@lfersatzteile.ch
- LF Spare Parts Ltd. UNITED KINGDOM**
A10a Lakeside Business Park, Broadway Lane
South Cerney, Gloucestershire GL7 5XL
Tel. +44 (0)1285 86 16 25 - Fax +44 (0)1285 86 39 49
www.lfspareparts724.co.uk - info@lfspareparts.co.uk
- LF Central Est Europe S.r.o. CZECH REPUBLIC**
Antala Staska 1859/34
14000 Praha 4 - KRC
Tel. +420 730 156 910
www.lfspareparts724.cz - info@lfspareparts.cz
- LF SPARE PARTS INC. USA**
Legal address:
155 Office Plaza Dr - Suite A - Tallahassee, FL 32301
Business/Mailing address:
1100 South Tower, 225 Peachtree St., N.E. - Atlanta, GA 30303, USA
Tel. +1-404-525-2600 - Fax +1-404-586-3528
www.lfspareparts724.us - info@lfspareparts.us
Tel. West Coast and Midwest: 206-349-1525 Sauro
Tel. East Coast and the Caribbean: 786-817-1764 Luis
-
- AUSTRALIA AND NEW ZEALAND**
www.lfspareparts724.com
andrea.calvio@lfspareparts.com
- AUSTRIA**
www.lfersatzteile724.at
info@lfersatzteile.at
- BALKAN COUNTRIES**
www.lfspareparts724.com
matija.ramov@lfspareparts.com
- BALTIC COUNTRIES**
www.lfspareparts724.com
inara.silina@lfspareparts.com
- LATIN AMERICA AND THE CARRIBEANS**
www.lfrepuestos-horeca724.es
export@lfrepuestos.es
- POLAND**
www.lfspareparts724.pl
info@lfspareparts.pl
- SOUTH KOREA**
www.lfspareparts724.com
fabio.doni@lfspareparts.com
- TURKEY**
www.lfyedekparca724.com
export@lfspareparts.com