



# Spare parts for the professional sector: Warewashing equipment



Suitable for:

# ANGELO PO



This catalogue is automatically generated.  
Therefore, the sequence of the items might  
not be always shown at best.  
Updates will be issued in case of additions  
and/or amendments.  
*Suitable universal spare parts may not be included*





Suitable for:

# ANGELO PO



Suitable for:

## Air traps

**3060041 AIR CHAMBER**  
 ext. dims. 46x130 mm - hose end fitting  $\varnothing$  6 mm  
 fastening area 46x32.5 mm  
 for Dishwasher (ANGELO PO) F60P - F60PR - F60T  
 F80P - F80PR - L45



ANGELO PO 33M0220

**3060052 PLATE FOR AIR CHAMBER**  
 dimensions 46x32.5 mm



ANGELO PO 35Z0050

**3060006 AIR CHAMBER  $\varnothing$  36x131 mm**  
 hose end fitting  $\varnothing$  6 mm - threaded fitting  $\varnothing$  1/4"  
 for Dishwasher (ANGELO PO) L40 - L40S - L60  
 for Dishwasher hood type (ANGELO PO) L100 - L80



ANGELO PO 33D0360

**1186356 O-RING 03075 EPDM**  
 ring thickness 2.62 mm - internal  $\varnothing$  18.72 mm  
 for Dishwasher (ANGELO PO) L40 - L40S - L60  
 for Dishwasher hood type (ANGELO PO) L100 - L80



ANGELO PO 3150410

**3186267 GASKET FLAT EPDM 50x36.5x3 mm**  
 central hole  $\varnothing$  20 mm - for air trap  
 for Dishwasher (ANGELO PO) F60P - F60PR - F80P  
 F80PR - L45



ANGELO PO 3151770

**3060053 NUT BRASS  $\varnothing$  1/4"**



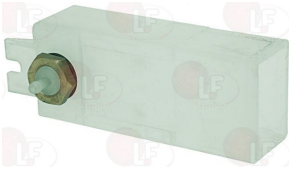
ANGELO PO 3117580

Suitable for:

Suitable for:

**3060086 AIR CHAMBER COMPLETE 53x38x130 mm**  
 hose end fitting  $\varnothing$  6 mm  
 complete with flat gasket and fastening nut  
 for Dishwasher hood type (ANGELO PO) LC100 - LC130  
 LC80  
 for Dishwasher pull-through (ANGELO PO) C207  
 C304

**3060087 BRASS NUT  $\varnothing$  3/8"**



ANGELO PO 33D1390

ANGELO PO 33Q2190

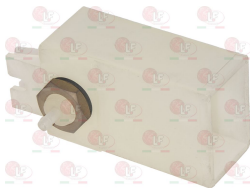
**3186438 FLAT EPDM GASKET  $\varnothing$  25x16.5x2 mm**  
 for air chamber



ANGELO PO 3151890

**3060027 AIR CHAMBER COMPLETE 53x38x90 mm**  
 hose end fitting  $\varnothing$  6 mm  
 complete with flat gasket and fastening nut

**3060087 BRASS NUT  $\varnothing$  3/8"**



ANGELO PO

ANGELO PO 33Q2190

**3186438 FLAT EPDM GASKET  $\varnothing$  25x16.5x2 mm**  
 for air chamber



ANGELO PO 3151890

**3060065 AIR CHAMBER 55x31x56 mm**  
 hose end fitting  $\varnothing$  6 mm

**3060070 GASKET 14x8x1.5 mm**



ANGELO PO 33D3330

ANGELO PO 37Q5130



Suitable for:

**3060069** **HEXAGONAL NUT M8 MEDIUM**  
stainless steel - UNI 5588 - DIN 934 - ISO 4032



ANGELO PO 3110050

ANGELO PO 33Q6470

# ANGELO PO



Suitable for:

**3060066** **AIR CHAMBER 55x31x65 mm**  
hose end fitting  $\varnothing$  6 mm



ANGELO PO 33D3320

**3060070** **GASKET 14x8x1.5 mm**



ANGELO PO 37Q5130

**3060069** **HEXAGONAL NUT M8 MEDIUM**  
stainless steel - UNI 5588 - DIN 934 - ISO 4032



ANGELO PO 3110050

ANGELO PO 33Q6470

**3060068** **AIR CHAMBER 55x31x90 mm**  
hose end fitting  $\varnothing$  6 mm



ANGELO PO 3187500

**3060070** **GASKET 14x8x1.5 mm**



ANGELO PO 37Q5130

**3060069** **HEXAGONAL NUT M8 MEDIUM**  
stainless steel - UNI 5588 - DIN 934 - ISO 4032

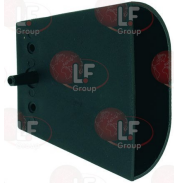


ANGELO PO 3110050

ANGELO PO 33Q6470

Suitable for:

**3060029 AIR CHAMBER 84x28x80 mm**  
 hose end fitting  $\varnothing$  6 mm  
 complete with silicone O-ring gasket (1186611)  
 complete with two nylon gaskets (5007864)  
 for Glasswasher/Cupwasher (ANGELO PO) LT10R  
 LT20F - LT25F



ANGELO PO 33D0410

Suitable for:

**1186611 O-RING 02025 RED SILICONE**  
 ring thickness 1.78 mm - internal  $\varnothing$  6.07 mm



ANGELO PO 3150550

## Axial motor fans

**3240501 AXIAL FAN SUNON 120x120x38 mm**  
 ball bearings  
 230V 50/60Hz 22W 2850rpm  
 DP200A 2123XBT.GN



ANGELO PO 32M7130

ANGELO PO 32V5790

**3240503 AXIAL VENTILATOR SUNON 92x92x25 mm**  
 ball bearings  
 230V 50/60Hz 14,5W 2350rpm  
 SF23092A 2092HBT.GN

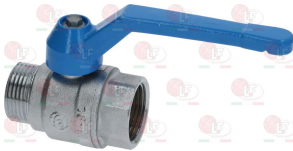


ANGELO PO 3113740

ANGELO PO 3205930

## Ball valves and accessories

**3526693 WATER VALVE  $\varnothing$  1"MF**  
 ball valve  
 heavy series with PN 25 total passage  
 aluminium lever



ANGELO PO 33D0890

ANGELO PO 33D1740

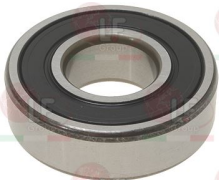
**5003313 ELBOW FITTING OF CAST IRON  $\varnothing$  1"**



ANGELO PO 33Q2880

## Bearings

**D063052 BEARING 6204-2RS SKF**  
 single box packaging



ANGELO PO 3103840



Suitable for:

# ANGELO PO



Suitable for:

## Boilers

**3024072 BOILER  $\varnothing$  110x370 mm**  
for Dishwasher (ANGELO PO) KD40 - KN40



ANGELO PO 3023900

**3024041 BOILER  $\varnothing$  112x320 mm**  
for Dishwasher (ANGELO PO) KD37 - KN37



ANGELO PO 3022510

**3024022 BOILER  $\varnothing$  138x285 mm**  
for Glasswasher/Cupwasher (ANGELO PO) LT10R  
LT20F - LT25F



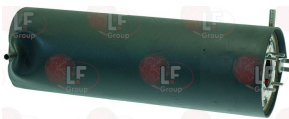
ANGELO PO 34A0700

**3024020 BOILER  $\varnothing$  150x400 mm**  
for Dishwasher (ANGELO PO) LF50 - LF50E - LF50EM



ANGELO PO 34A1950

**3024036 COMPLETE BOILER  $\varnothing$  160x505 mm**  
for Dishwasher hood type (ANGELO PO) KD100 - KD130  
KD85 - KN1000 - KN800



ANGELO PO 34A2560

## Bulb sheathes

**3187006 THERMOSTAT SHEATH  $\varnothing$  1/2"**  
bulb length 105 mm



ANGELO PO 30Q1070

## Bushings

**3743048 RINSE IMPELLER BUSH**  
 $\varnothing$  internal 10 mm



ANGELO PO 36G8460



## Clamps

**3449451 HOSE CLAMP 10-16**  
for pipes  $\varnothing$  10÷16 mm  
made of stainless steel AISI 304  
height 9 mm and screw E7  
suitable for food industry



ANGELO PO 36E4320

**3449470 HOSE CLAMP 32-50**  
for pipes  $\varnothing$  32÷50 mm  
made of stainless steel AISI 304  
height 12 mm and screw E7  
suitable for food industry



ANGELO PO 3140300

## Contact thermostats

**3444283 CONTACT THERMOSTAT +110°C**  
boiler security  
with manual reset - 10A 250V



ANGELO PO 32V7250

**3444607 CONTACT THERMOSTAT 110°C**  
with manual reset



ANGELO PO 32Z8270

**3445403 CONTACT THERMOSTAT 55°C**  
with automatic reset



ANGELO PO 32V1920

**5030497 CONTACT THERMOSTAT 70°C 10A 250V**  
with automatic reset



ANGELO PO 3008880

## Contactors

**3446562 CONTACTOR LOVATO BF0901A**  
coil 9A 230V 50/60Hz 4.2Kw  
3 normally open contacts  
1 normally closed auxiliary contact



ANGELO PO 3100940

ANGELO PO 32V5290

**3446558 CONTACTOR LOVATO BGF0901A**  
9A 400V 4Kw - coil 230V 50/60Hz  
3 NO contacts  
1 NC auxiliary contact



ANGELO PO 32Z3512

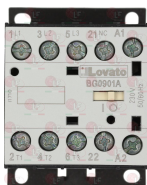


Suitable for:

# ANGELO PO



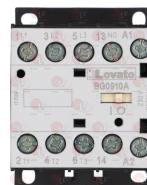
**3446557 CONTACTOR LOVATO BG0901A**  
 coil 9A 230V 50/60Hz 4Kw  
 3 normally open contacts  
 1 normally closed auxiliary contact



ANGELO PO 32V6550

Suitable for:

**3446556 CONTACTOR LOVATO BG0910A**  
 coil 9A 230V 50/60Hz 4Kw  
 3 normally open contacts  
 1 normally open auxiliary contact



ANGELO PO 32V1880

**5023908 CONTACTOR SIEMENS 3RT1025-1AL20**  
 17A 400V 7.5Kw - coil 230V 50/60Hz  
 3 normally open contacts



ANGELO PO 32Z9250

**3351012 CONTACTOR SIEMENS 3TG1001-1AL2**  
 16A 230V 50/60Hz  
 contacts:3 NO + 1 NC



ANGELO PO 32Z4471

**5068368 THERMAL RELAY LOVATO 0,6-1 A**  
 RF9-1  
 1 contact NO  
 1 contact NC



ANGELO PO 32V6950

**5024564 THERMAL RELAY LOVATO 0,9-1,5 A**  
 RF9.1V5  
 1 contact NO  
 1 contact NC



ANGELO PO 32V1010

ANGELO PO 32Z0930

**3351092 THERMAL RELAY LOVATO 2,5-4 A**  
 RF380400



ANGELO PO 32Z0950

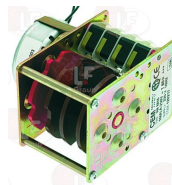
## Controllers and changeover switches

**3322022 CONTROLLER D94.44 4 CAMS**  
 240 seconds cycle  
 220/240V 50/60Hz  
 anticlockwise rotation  
 D-shaped pin  $\varnothing$  6x4.6 mm  
 for Dishwasher (ANGELO PO) L35 - L35S



ANGELO PO 32Z2331

**3322013 CONTROLLER H4M16 4 CAMS**  
 360 seconds cycle  
 rinse 17 seconds  
 220/240V 50/60Hz  
 anticlockwise rotation  
 without pin

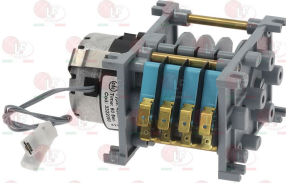


ANGELO PO 32V7300



Suitable for:

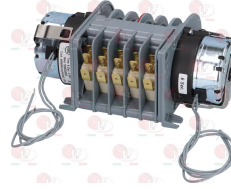
**3322060 CONTROLLER 4904F3 4 CAMS**  
 60 seconds cycle  
 rinse 15 seconds  
 230V 50/60Hz  
 anticlockwise rotation  
 without pin  
 for Dishwasher hood type (ANGELO PO) L100 - L80



ANGELO PO 32Z0780

Suitable for:

**3322116 CONTROLLER 4905MDV 5 CAMME**  
 1st cycle 180 seconds  
 2nd cycle 6 seconds  
 230V 50/60Hz



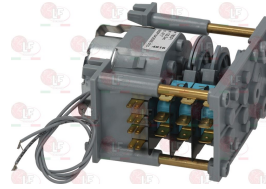
ANGELO PO 32V1940

**3322195 CONTROLLER 600/627/5309 2 CAMS**  
 120 seconds cycle  
 230V 50/60Hz



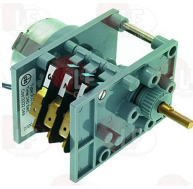
ANGELO PO 3030290

**3322079 CONTROLLER 7803F1 3 CAMS**  
 120 seconds cycle  
 230V 50/60Hz



ANGELO PO 32Z5720

**3322049 CONTROLLER 9003F1 3 CAMS**  
 240 seconds cycle  
 rinse 15 seconds  
 230V 50/60Hz  
 anticlockwise rotation  
 D-shaped pin  $\varnothing$  6x4.6 mm  
 for Dishwasher (ANGELO PO) L40 - L40S - L60



ANGELO PO 32Z4760

**5018216 TIMER 4904F3 4 CAMS**  
 230V 50/60Hz  
 1° cycle 50 sec.  
 2° cycle 100 sec.  
 3° cycle 150 sec.



ANGELO PO 32V7290

## Curtains

**3443417 INNER CURTAIN 700x410 mm**



ANGELO PO 36Z0720



Suitable for:

# ANGELO PO



Suitable for:

## Door catches

**3398005 DOOR CATCH**  
for Dishwasher (ANGELO PO) L35 - L35S - L40 - L40S  
L60



ANGELO PO 36M0020

**3398006 DOOR RETAINER**  
for Dishwasher (ANGELO PO) L35 - L35S - L40 - L40S  
L60



ANGELO PO 36M0030

**3398016 DOOR CATCH**  
thread  $\varnothing$  12 mm  
for Dishwasher (ANGELO PO) F60P - F60PR - F60T  
F80P - F80PR - LF50 - L45



ANGELO PO 31W0061

**3398036 DOOR CATCH WITH MICROSWITCH**



ANGELO PO 3030100

**3398030 GREEN DOOR CATCH**  
for DISHWASHER all models



ANGELO PO 32W1300

## Door gaskets for dishwashers

**3186176 DOOR GASKET 445 mm**  
profile dimensions 28x6 mm



ANGELO PO 37Q3910

## Drain assembly

**3316034 COMPLETE DRAIN ASSEMBLY  $\varnothing$  1"**  
connection  $\varnothing$  1"



ANGELO PO 33D2440

ANGELO PO 33D3140

## Drain assembly

**3316030 OVERFLOW DRAIN ASSEMBLY  $\varnothing$  1"1/2**  
 for Dishwasher (ANGELO PO) L40 - L40S - L60  
 for Dishwasher hood type (ANGELO PO) L100 - L80



ANGELO PO 33Q3050

**3061032 GASKET ELBOW  $\varnothing$  1"1/2**  
 external  $\varnothing$  43 mm - internal  $\varnothing$  33 mm



ANGELO PO 37Q1510

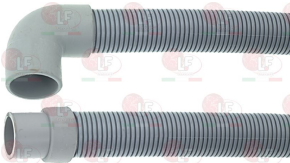
**3061033 OUTLET ELBOW RING NUT  $\varnothing$  1"1/2**



ANGELO PO 33Q2320

## Drain hoses

**3450026 DRAIN HOSE  $\varnothing$  28x1500 mm**  
 elbow hose internal  $\varnothing$  28 mm external  $\varnothing$  33 mm  
 straight hose internal  $\varnothing$  24 mm external  $\varnothing$  28 mm  
 max temperature 90°C



ANGELO PO 3300290

ANGELO PO 3300420

**3450028 DRAIN HOSE  $\varnothing$  29x1500 mm**  
 muffs internal  $\varnothing$  24 and 28 mm  
 max temperature 90°C



ANGELO PO 33M1660

**3450120 DRAIN HOSE  $\varnothing$  38x1500 mm**  
 elbow hose internal  $\varnothing$  40 mm  
 straight hose internal  $\varnothing$  31 mm



ANGELO PO 3029590

ANGELO PO 33Q4200

## Drain plugs

**3448166 OVERFLOW PIPE  $\varnothing$  27x120 mm**  
 made of plastic  
 for Glasswasher/Cupwasher (ANGELO PO) LT10R  
 LT20F - LT25F



ANGELO PO 33D0390



Suitable for:

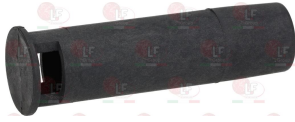
# ANGELO PO



Suitable for:

## Drain plugs

**3448137 OVERFLOW PIPE  $\varnothing$  28x106 mm**  
in plastic



ANGELO PO 3018870

**3316041 GASKET 1"  $\varnothing$  44x32x3 mm**



ANGELO PO 3030160

**3448165 OVERFLOW PIPE  $\varnothing$  28x220 mm**  
plastic  
for Dishwasher (ANGELO PO) F60P - F60PR - F80PR  
L45



ANGELO PO 33D0130  
ANGELO PO 33D3120

ANGELO PO 33D0140

ANGELO PO 33D2640

**3316040 ELBOW CONNECTOR  $\varnothing$  1"x30 mm**



ANGELO PO 3030150

**3316042 STAINLESS STEEL NUT  $\varnothing$  1"**



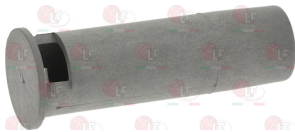
ANGELO PO 3030170

**3186143 O-RING 04093 EPDM**  
ring thickness 3.53 mm - internal  $\varnothing$  23.40 mm



ANGELO PO 3150520

**3448139 OVERFLOW PIPE  $\varnothing$  28x96 mm**  
in plastic



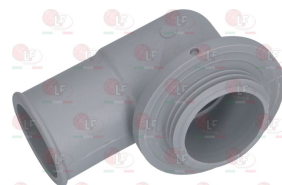
ANGELO PO 3081150

**3316041 GASKET 1"  $\varnothing$  44x32x3 mm**



ANGELO PO 3030160

**3316040 ELBOW CONNECTOR  $\varnothing$  1"x30 mm**



ANGELO PO 3030150

**3316042 STAINLESS STEEL NUT  $\varnothing$  1"**



ANGELO PO 3030170



Suitable for:

**3448176 OVERFLOW PIPE  $\varnothing$  35x238 mm**  
made of plastic



ANGELO PO 33D2320

**3160198 ING NUT FOR INLET BOSS  $\varnothing$  1"1/4**



ANGELO PO 33Q2160

**3448168 OVERFLOW PIPE  $\varnothing$  40x187 mm**  
made of plastic



ANGELO PO 33D3350

**3448207 OVERFLOW PIPE  $\varnothing$  40x210 mm**  
in plastic  
for Dishwasher (ANGELO PO) KD60 - KD60E - KD60M  
KD60MA - KD60ME - KD85 - KD85A - KD85E  
for Dishwasher hood type (ANGELO PO) KD100  
KD100A  
for Pan/utensilwashing machines (ANGELO PO) LP151



ANGELO PO 33D3360

**3448231 OVERFLOW PIPE  $\varnothing$  40x400 mm**



ANGELO PO 3056130

Suitable for:

**3316101 DRAIN ASSEMBLY CONNECTION  $\varnothing$  1"1/4**  
internal hole  $\varnothing$  35 mm - height 60 mm  
for Dishwasher (ANGELO PO) LF50  
for Dishwasher hood type (ANGELO PO) LC100 - LC130  
LC80



ANGELO PO 33D3090

ANGELO PO 33Q2290

ANGELO PO 33Q4740

**3186238 O-RING 0146 EPDM**  
ring thickness 3.53 mm - internal  $\varnothing$  41.28 mm



ANGELO PO 3151930

**3186231 LIP SEAL DEM40 EPDM**  
 $\varnothing$  40x30x7 mm



ANGELO PO 37Q5140

**3186231 LIP SEAL DEM40 EPDM**  
 $\varnothing$  40x30x7 mm



ANGELO PO 37Q5140

**3186231 LIP SEAL DEM40 EPDM**  
 $\varnothing$  40x30x7 mm



ANGELO PO 37Q5140



Suitable for:

**3448115 OVERFLOW PIPE  $\varnothing$  42x431 mm**  
in chrome plated brass  
for Dishwasher hood type (ANGELO PO) L100 - L80



ANGELO PO 33D0050

Suitable for:

**1186655 O-RING 04131 EPDM**  
ring thickness 3.53 mm - internal  $\varnothing$  32.93 mm  
for Dishwasher hood type (ANGELO PO) L100 - L80



ANGELO PO 3150260

**5017671 OVERFLOW PIPE END  $\varnothing$  40x52 mm**  
interno  $\varnothing$  32 mm  
for Pan/utensilwashing machines (ANGELO PO) LPG300  
LP202 - LP202HC - LP302 - LP302HC



ANGELO PO 3191570

ANGELO PO 33D3300

## Drain pumps

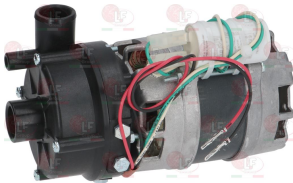
**3122209 ELECTRIC PUMP GRE 7772**  
100W 230V 50Hz cl.F  
connections  $\varnothing$  30 and 22 mm



ANGELO PO 32M4430

## Electric pumps

**3122769 ELECTRIC PUMP AP 7670 0.15HP**  
inlet external  $\varnothing$  28 mm - outlet external  $\varnothing$  28 mm  
0.15HP 230V 50Hz - Rpm 2850  
capacitor 6.3  $\mu$ f



ANGELO PO 32M2950

**3122382 ELECTRIC PUMP AP 7675 0.40HP**  
inlet external  $\varnothing$  45 mm - outlet external  $\varnothing$  40 mm  
0.40HP 230V 50Hz - Rpm 2850  
capacitor 10 $\mu$ f



ANGELO PO 32M2940

Suitable for:

**3122033 ELECTRIC PUMP FIR 1225SX 1.50HP**  
 inlet external  $\varnothing$  63 mm - outlet external  $\varnothing$  48 mm  
 1.50HP 220/400V 50Hz 4.8/2.8A - Rpm 2800  
 flow rate 625 L/min



ANGELO PO 32M3660

Suitable for:

**3122024 SEAL MECHANICAL FOR SHAFT  $\varnothing$  12 mm**  
 metal seal internal  $\varnothing$  11 mm -  $\varnothing$  external 24 mm  
 height 15.5 mm  
 back. element internal  $\varnothing$  14 mm -  $\varnothing$  external 26 mm  
 height 8 mm



ANGELO PO 3036790

ANGELO PO 3152080

**3122802 ELECTRIC PUMP FIR 1227LH 2.70HP**  
 inlet external  $\varnothing$  63 mm - outlet external  $\varnothing$  48 mm  
 2.70HP 220/400V 50Hz - Rpm 2800



ANGELO PO 32M1480

**3122024 SEAL MECHANICAL FOR SHAFT  $\varnothing$  12 mm**  
 metal seal internal  $\varnothing$  11 mm -  $\varnothing$  external 24 mm  
 height 15.5 mm  
 back. element internal  $\varnothing$  14 mm -  $\varnothing$  external 26 mm  
 height 8 mm



ANGELO PO 3036790

ANGELO PO 3152080

**3122395 ELECTRIC PUMP FIR 2233/X1SX 0.75HP**  
 inlet external  $\varnothing$  60 mm - outlet external  $\varnothing$  50 mm  
 additional outlet external  $\varnothing$  30 mm  
 0.75HP 230V 50Hz - rpm 2700  
 capacitor 12.5  $\mu$ f



ANGELO PO 32M6970

**3122017 ELECTRIC PUMP FIR 2292SX 0.75HP**  
 inlet external  $\varnothing$  45 mm - outlet external  $\varnothing$  40 mm  
 0.75HP 230V 50Hz 4A - Rpm 2800  
 capacitor 12.5  $\mu$ f - flow rate 280 L/min  
 for Dishwasher (ANGELO PO) L40 - L40S



ANGELO PO 32M2140

**3122392 ELECTRIC PUMP LGB ZF130DX 0.27HP**  
 inlet external  $\varnothing$  28 mm - outlet external  $\varnothing$  28 mm  
 0.20kW 230V 50Hz - Rpm 2800  
 capacitor 6.3  $\mu$ f



ANGELO PO 32M2920

**3122399 ELECTRIC PUMP LGB ZF270LHV 0.53HP**  
 inlet external  $\varnothing$  45 mm - outlet external  $\varnothing$  40 mm  
 0.40kW 230V 50Hz 1.7A - Rpm 2800  
 capacitor 10  $\mu$ f



ANGELO PO 32M5770



Suitable for:

# ANGELO PO



Suitable for:

**3122393 ELECTRIC PUMP LGB ZF320VSX 0.75HP**  
 inlet external  $\varnothing$  45 mm - outlet external  $\varnothing$  40 mm  
 0.75kW 230V 50Hz - Rpm 2800  
 capacitor 12.5  $\mu$ f



ANGELO PO 32M2910

ANGELO PO 32M4760

**3122276 ELECTRIC PUMP OP T.45 0.45HP**  
 inlet external  $\varnothing$  33 mm - outlet external  $\varnothing$  30 mm  
 additional outlet external  $\varnothing$  28 mm  
 0.45HP 230V 50Hz 1.8A - Rpm 2750  
 capacitor 8  $\mu$ f



ANGELO PO 3034630

**3068014 CAPACITOR DUCATI ENERGIA 8  $\mu$ F**  
 450V 50/60Hz  
 operating temperature -25 +85°C  
 lead connection 6.35x0.8 mm  
 $\varnothing$  32xh55 mm



ANGELO PO 3222490

**3122024 SEAL MECHANICAL FOR SHAFT  $\varnothing$  12 mm**  
 metal seal internal  $\varnothing$  11 mm -  $\varnothing$  external 24 mm  
 height 15.5 mm  
 back. element internal  $\varnothing$  14 mm -  $\varnothing$  external 26 mm  
 height 8 mm



ANGELO PO 3036790

ANGELO PO 3152080

**3122264 ELECTRIC PUMP OP T.7 0.70HP**  
 inlet external  $\varnothing$  50 mm - outlet external  $\varnothing$  30 mm  
 additional outlet external  $\varnothing$  30 mm  
 0.70HP 230V 50Hz 3.2A - Rpm 2750  
 capacitor 12.5  $\mu$ F



ANGELO PO 3022650

**8000058 ELETTRPOMPA LGB ZF800DX 3,60HP**  
 entrata  $\varnothing$  esterno 63 mm - uscita  $\varnothing$  esterno 54 mm  
 2,7kW 230/400V 50Hz



ANGELO PO 32M4830





## Electrical capacitors

**3068086 CAPACITOR ELECTRICAL 25 $\mu$ F**  
450V 50/60Hz -  $\varnothing$  45xh71 mm



ANGELO PO 32V6440

**3068087 CAPACITOR ELECTRICAL 35 $\mu$ F**  
450V 50/60Hz -  $\varnothing$  45xh91 mm



ANGELO PO 32V5980

**3068142 CAPACITOR 40 $\mu$ F**  
450V 50/60Hz -  $\varnothing$  45xh91 mm



ANGELO PO 32V6540

## Electronic boards

**5051726 BOARD FOR TIMER TRONIC STANDARDISED**  
dimensions 132x82 mm

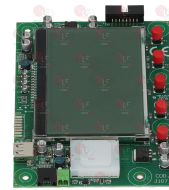


ANGELO PO 3026600

ANGELO PO 3114850

ANGELO PO 3207870

**5059269 KEYBOARD WITH DISPLAY VERSION 09**  
size 158x112 mm



ANGELO PO 3227940

## Electronic controllers

**3441065 DIGITAL THERMOMETER TM103TN4 -40+100 $^{\circ}$ C**  
power supply 24V  
mounting hole 60x25 mm



ANGELO PO 3228250

## Feet

**3313119 ADJUSTABLE FOOT**  
thread  $\varnothing$  17,8 mm  
hexagonal base for wrench of 24 mm  
height of the hexagonal base 11 mm



ANGELO PO 3095690



Suitable for:

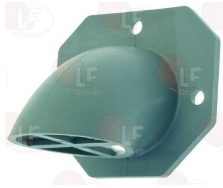
# ANGELO PO



Suitable for:

## Filters

**3349595 INLET COUPLING**



ANGELO PO 33Q4290

**3349604 INLET COUPLING 1000-1300**



ANGELO PO 33Q4210

**1186643 O-RING 04212 EPDM**  
ring thickness 3.53 mm - internal  $\varnothing$  53.57 mm



ANGELO PO 3152390

**3160236 INLET FILTER**  
plastic made - external  $\varnothing$  155 mm - height 70 mm



ANGELO PO 30Q3250

**3160488 INLET FILTER 161x80 H77 mm**



ANGELO PO 30Q1330

**3160237 INLET FITTING**  
complete with gasket



ANGELO PO 37Q4190

ANGELO PO 3095440

ANGELO PO 33Q4180

**3160220 STAINLESS STEEL FILTER  $\varnothing$  95 mm**  
for Dishwasher (ANGELO PO) F60P-L45 - L45



ANGELO PO 30Q0300

ANGELO PO 30Q1510

**3160462 WATER FILTER  $\varnothing$  1/2"FF**



ANGELO PO 35Q2780

**3160118 WATER FILTER  $\varnothing$  185 mm**



ANGELO PO 35Q6020



# ANGELO PO



Suitable for:

**3160007 WATER FILTER  $\varnothing$  3/4"FF**



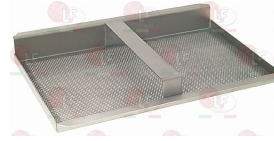
ANGELO PO 33Q6090

ANGELO PO 33Q6091

ANGELO PO 35Q2790

Suitable for:

**3160131 WATER FILTER 295x195 mm**  
for Dishwasher hood type (ANGELO PO) L100 - L80



ANGELO PO 30G0140

## Fittings

**3349353 ELBOW FITTING 1/4" M  $\varnothing$  8/6 NICKEL**



ANGELO PO 3016150

**3349318 FITTING  $\varnothing$  1/8" M-1/8" M NICHEL-PLATED**



ANGELO PO 3005480

**1349713 L-FITTING  $\varnothing$  1/4" F-1/4" F NICHEL PLATED**



ANGELO PO 33Q4360

**3349342 NICHEL-PL.HOSE-END FITTING  $\varnothing$  1/4" M  $\varnothing$  7**



ANGELO PO 3007980

ANGELO PO 33Q6640

**3349355 NICHEL-PL.T-FITTING  $\varnothing$  1/8" F-1/8" F-1/8" F**



ANGELO PO 3003770

**3349320 NICHEL-PLATED FITTING  $\varnothing$  1/2" M-1/2" M**



ANGELO PO 3071310

**3349330 NICHEL-PLATED FITTING  $\varnothing$  1/4" M-1/8" F**



ANGELO PO 3040920

**3349040 1/2" MF REDUCER**  
thread  $\varnothing$  21 mm  
for Dishwasher (ANGELO PO) L40 - L40S - L60



ANGELO PO 33Q5190



Suitable for:

# ANGELO PO



Suitable for:

## Fuses

**3049073 QUICK ACTING FUSE  $\varnothing$  10x38 mm - 10 PCS**  
500V 10A



ANGELO PO 32V6210

**3049043 QUICK ACTING FUSE  $\varnothing$  5x20 mm - 10 PCS**  
250V 500mA



ANGELO PO 3201540

**3049046 QUICK ACTING FUSE  $\varnothing$  5x20 mm - 10 PCS**  
250V 1A



ANGELO PO 3200020

## Gaskets and seals

**3186577 FLAT GASKET SILICONE  $\varnothing$  38x30x4 mm**  
for Dishwasher pull-through (ANGELO PO)  
for Pan/utensilwashing machines (ANGELO PO) LP124S  
LP124V - LP124VS - LP84S - LP84V - LP84VS



ANGELO PO 3152780

**3786704 GASKET FOR WASH HOSE**  
 $\varnothing$  51x34x15 mm  
for Dishwasher (ANGELO PO) KD100 - KD100A - KD130  
KD130A - KD130E - KD130EAT



ANGELO PO 3081380

## Gears

**5017043 PINION P70 Z5**  
hole for shaft  $\varnothing$  30 mm



ANGELO PO 3006900

**3243847 REDUCER FOR CONVEYOR SUPPORT**



ANGELO PO 36G7540

## Guides

**3189042 SLIDEWAY FOR HOOD LH 650x25 mm**



ANGELO PO 3036440

**3189041 SLIDEWAY FOR HOOD RH**  
sizes 695x25 mm



ANGELO PO 3036430



## Handles

**3242374 COMPLETE HANDLE**



ANGELO PO 36M6190

**3399009 DOOR HANDLE INSERT**



ANGELO PO 37M7200

**3242027 SHACKLE SCREW**  
thread  $\varnothing$  6 mm  
for Dishwasher hood type (ANGELO PO) L100 - L80



ANGELO PO 3100100

**3242026 SHACKLE SCREW BUSHING**  
 $\varnothing$  12 x 23 mm  
for Dishwasher hood type (ANGELO PO) L100 - L80



ANGELO PO 35Z0770

## Heating elements

**3755060 COVER FOR HEATING ELEMENT / PLASTIC**  
for heating elements with flange  $\varnothing$  72 mm  
 $\varnothing$  61 mm - height 53.5 mm  
distance between fastening holes 68.5 mm



ANGELO PO 3150320

ANGELO PO 3150321

**5015994 COVER FOR HEATING ELEMENT / PLASTIC**  
 $\varnothing$  130 mm - height 40 mm  
for Dishwasher (ANGELO PO) KD85  
for Dishwasher hood type (ANGELO PO) KD100 - KD130  
for Pan/utensilwashing machines (ANGELO PO) LP151  
LP202 - LP302



ANGELO PO 35E8870

**3355175 HEATING ELEMENT BOILER 2500W 220V**  
immersed depth 210 mm  
flange external  $\varnothing$  63 mm  
with bulbholder sheathing  
complete with O-ring  $\varnothing$  58 mm (3186013)



ANGELO PO 32G0540

**3755036 HEATING ELEMENT BOILER 2800W 230V**  
immersed depth 300 mm  
flange external  $\varnothing$  55 mm  
with bulbholder sheathing  $\varnothing$  7 mm  
complete with O-ring  $\varnothing$  48 mm (3186001)



ANGELO PO 3030200



Suitable for:

# ANGELO PO



Suitable for:

**3355477 HEATING ELEMENT BOILER 3000W 220/380V**  
 immersed depth 265 mm  
 flange external  $\varnothing$  63 mm  
 with bulbholder sheathing  $\varnothing$  6 mm  
 complete with O-ring  $\varnothing$  58 mm (3186013)



ANGELO PO 32G3380

**3355104 HEATING ELEMENT BOILER 3000W 230/380V**  
 immersed depth 325 mm  
 flange external  $\varnothing$  72 mm - with bulbholder sheathin  
 complete with O-ring  $\varnothing$  67 mm (3186014)  
 for Dishwasher (ANGELO PO) FL34



ANGELO PO 32G0220

**3186014 O-RING 06225 EPDM  $\varnothing$  67 mm**  
 ring thickness 5.34 mm - internal  $\varnothing$  56.52 mm



ANGELO PO 3150430

ANGELO PO 3151960

ANGELO PO 37Q5260

**5029267 HEATING ELEMENT BOILER 3500W 230V**  
 immersed depth 365 mm  
 flange external  $\varnothing$  55 mm  
 complete with O-ring  $\varnothing$  48 mm (3186001)  
 for Dishwasher (ANGELO PO) LF50EM



ANGELO PO 3075840

**3355459 HEATING ELEMENT BOILER 4500W 230V**  
 immersed depth 365 mm  
 flange external  $\varnothing$  55 mm  
 complete with O-ring  $\varnothing$  48 mm (3186001)  
 for Dishwasher (ANGELO PO) LF50  
 for Dishwasher (ANGELO PO) LF50



ANGELO PO 32G2140

**3186001 O-RING 06150 EPDM**  
 ring thickness 5.34 mm - internal  $\varnothing$  37.47 mm



ANGELO PO 3035850

ANGELO PO 3152160

Suitable for:

**3355458 HEATING ELEMENT BOILER 6000W 230V**  
 immersed depth 365 mm  
 flange external  $\varnothing$  55 mm  
 complete with O-ring  $\varnothing$  48 mm (3186001)



ANGELO PO 32G2180

Suitable for:

**3186001 O-RING 06150 EPDM**  
 ring thickness 5.34 mm - internal  $\varnothing$  37.47 mm



ANGELO PO 3035850

ANGELO PO 3152160

**3355142 HEATING ELEMENT BOILER 7000W 220/380V**  
 immersed depth 370 mm  
 fastening fitting  $\varnothing$  2" (56 mm)  
 complete with gasket (3186012)  
 for Dishwasher (ANGELO PO) AL75 - AL90 - APS160  
 FL54S - FL74



ANGELO PO 32G0110

**3755064 HEATING ELEMENT FINNED 1500W 230V**  
 immersed length 340 mm - width 93 mm  
 finned part 300 mm - connections  $\varnothing$  3/8" (16 mm)



ANGELO PO 32G2200

**3455391 HEATING ELEMENT FINNED 2000W 230V**  
 immersed length 340 mm - width 95 mm  
 finned part 300 mm - connections  $\varnothing$  3/8" (16 mm)



ANGELO PO 32G2190

**3355108 HEATING ELEMENT FOR BOILER 12500W 230/38**  
 immersed length 620 mm  
 flange external  $\varnothing$  72 mm - bulbholder sheathing  
 complete with O-ring  $\varnothing$  67 mm (3186014)  
 nut (3528232) and washer (3528238) on request



ANGELO PO 32G0840

**3186014 O-RING 06225 EPDM  $\varnothing$  67 mm**  
 ring thickness 5.34 mm - internal  $\varnothing$  56.52 mm



ANGELO PO 3150430

ANGELO PO 3151960

ANGELO PO 37Q5260



Suitable for:

# ANGELO PO



**3755026 HEATING ELEMENT FOR BOILER 2000W 230V**  
 immersed length 180 mm  
 width 95 mm - flange 50x27 mm  
 for Dishwasher (ANGELO PO) F60P - F60PR - F60T  
 F80P - F80PR - L45



ANGELO PO 32G2070

**3355138 HEATING ELEMENT FOR BOILER 3000W 220V**  
 immersed length 290 mm  
 fitting  $\varnothing$  1"1/4 (43 mm)  
 complete with gasket (3186010)  
 nut (3528232) and washer (3528238) on request  
 for Dishwasher (ANGELO PO) AP30



ANGELO PO 32G0500

**3355140 HEATING ELEMENT FOR BOILER 4500W 220/380**  
 immersed length 330 mm  
 fastening fitting  $\varnothing$  2" (56 mm)  
 complete with gasket (3186012)  
 nut (3528232) and washer (3528238) on request  
 for Dishwasher (ANGELO PO) FL34S - FL54



ANGELO PO 32G0170

**3755028 HEATING ELEMENT FOR BOILER 7000W 230/400**  
 immersed length 425 mm  
 flange external  $\varnothing$  72 mm  
 with probe receptacle  
 complete with O-ring  $\varnothing$  67 mm (3186014)  
 nut (3528232) and washer (3528238) on request  
 for Dishwasher hood type (ANGELO PO) L100



ANGELO PO 32G0420

**3186014 O-RING 06225 EPDM  $\varnothing$  67 mm**  
 ring thickness 5.34 mm - internal  $\varnothing$  56.52 mm



ANGELO PO 3150430

ANGELO PO 3151960

ANGELO PO 37Q5260

**3355480 HEATING ELEMENT FOR BOILER 9000W 220/380**  
 immersed length 460 mm  
 flange external  $\varnothing$  72 mm  
 with probe receptacle  $\varnothing$  7 mm  
 complete with O-ring  $\varnothing$  67 mm (3186014)  
 nut (3528232) and washer (3528238) on request



ANGELO PO 32G3410

**3186014 O-RING 06225 EPDM  $\varnothing$  67 mm**  
 ring thickness 5.34 mm - internal  $\varnothing$  56.52 mm



ANGELO PO 3150430

ANGELO PO 3151960

ANGELO PO 37Q5260





Suitable for:

**3755042 HEATING ELEMENT TANK 1500W 220V**  
 immersed depth 210 mm  
 flange external  $\varnothing$  63 mm  
 with bulbholder sheathing  $\varnothing$  7 mm  
 complete with O-ring  $\varnothing$  58 mm (3186013)



ANGELO PO 32G0480

Suitable for:

**3355483 HEATING ELEMENT TANK 1850W 230V**  
 immersed depth 255 mm  
 width 42 mm - flange 61x26 mm  
 complete with gasket



ANGELO PO 3030180

**3355485 HEATING ELEMENT TANK 2700W 230V**  
 immersed depth 350 mm  
 width 42 mm - flange 61x26 mm  
 complete with gasket



ANGELO PO 32G3360

**3755065 HEATING ELEMENT TANK 3000W 230V**  
 immersed depth 360 mm  
 width 35 mm - fittings  $\varnothing$  10 mm



ANGELO PO 32G2590

**3355740 HEATING ELEMENT THREE-PHASE 4500W 220V**  
 immersed depth 300 mm  
 fastening fitting  $\varnothing$  2" (56 mm)  
 complete with gasket (3186012)  
 nut on request (3528233) and washer (3528238)  
 for Dishwasher (ANGELO PO) FL34S - FL54



ANGELO PO

**3755941 HEATING ELEMENT 14000W 230/400V**  
 immersed length 510 mm  
 external  $\varnothing$  flange 72 mm - with probe receptacle  
 complete with O-ring  $\varnothing$  67 mm (3186014)  
 nut (3528232) and washer (3528238) on request



ANGELO PO 32G2000

ANGELO PO 32G2340

ANGELO PO 32G2840

**3755071 HEATING ELEMENT 2613/2400W 240/230V**  
 for tank and boiler  
 immersed depth 320 mm  
 flange external  $\varnothing$  72 mm - with probe receptacle  
 complete with O-ring  $\varnothing$  67 mm (3186014)  
 nut (3528232) and washer (3528238) on request  
 for Dishwasher (ANGELO PO) L40



ANGELO PO 32G0390

ANGELO PO 32G0790

**3355139 HEATING ELEMENT 3000W 220/380V**  
 for tank and boiler  
 immersed depth 320 mm  
 fitting  $\varnothing$  1"1/2 (47 mm)  
 complete with gasket (3186011)  
 nut (3528232) and washer (3528238) on request  
 for Dishwasher (ANGELO PO) AP30 - AP80



ANGELO PO 32G0470



Suitable for:

# ANGELO PO



**3355105 HEATING ELEMENT 4200W 230/380V**  
 for boiler and wash tank  
 immersed depth 340 mm  
 flange external  $\varnothing$  72 mm - with bulb-sheathing  
 complete with O-ring  $\varnothing$  67 mm (3186014)  
 for Dishwasher (ANGELO PO) FL34S - FL54 - L40S  
 L60  
 for Dishwasher hood type (ANGELO PO) L100 - L80



ANGELO PO 32G0230

ANGELO PO 32G0380

**3186014 O-RING 06225 EPDM  $\varnothing$  67 mm**  
 ring thickness 5.34 mm - internal  $\varnothing$  56.52 mm



ANGELO PO 3150430

ANGELO PO 3151960

ANGELO PO 37Q5260

**3355046 HEATING ELEMENT 6000W 220/380V**  
 immersed length 490 mm  
 flange  $\varnothing$  external 63 mm - with probe receptacle  
 complete with O-ring  $\varnothing$  58 mm (3186013)



ANGELO PO 32G3080

**3355106 HEATING ELEMENT 6000W 230/400V**  
 for boiler and tank  
 immersed length 350 mm  
 flange external  $\varnothing$  72 mm - with bulb-sheathing  
 with O-ring  $\varnothing$  67 mm (3186014)  
 nut (3528232) and washer (3528238) on request  
 for Dishwasher (ANGELO PO) AL75 - AL90 - AP9  
 for Dishwasher hood type (ANGELO PO) L100 - L80



ANGELO PO 32G0400

ANGELO PO 32G0520

ANGELO PO 32G0920

ANGELO PO 32G2580

**3186014 O-RING 06225 EPDM  $\varnothing$  67 mm**  
 ring thickness 5.34 mm - internal  $\varnothing$  56.52 mm



ANGELO PO 3150430

ANGELO PO 3151960

ANGELO PO 37Q5260

**3755063 HEATING ELEMENT 8000W 230V**  
 immersed depth 545 mm  
 flange external  $\varnothing$  55 mm  
 complete with O-ring  $\varnothing$  48 mm (3186001)



ANGELO PO 32G2170

Suitable for:

**3355107 HEATING ELEMENT 9000W 230/380V**  
 for tank and boiler  
 immersed depth 485 mm  
 flange external  $\varnothing$  72 mm - with probe receptacle  
 complete with O-ring  $\varnothing$  67 mm (3186014)  
 nut (3528232) and washer (3528238) on request



Suitable for:

**3186014 O-RING 06225 EPDM  $\varnothing$  67 mm**  
 ring thickness 5.34 mm - internal  $\varnothing$  56.52 mm



ANGELO PO 32G0850

ANGELO PO 32G2100

ANGELO PO 32G2720

ANGELO PO 3150430

ANGELO PO 3151960

ANGELO PO 37Q5260

## Hinges, catches and accessories

**3053123 HINGE FOR DOOR RH**



ANGELO PO 3222360

**3053121 RIGHTHAND HINGE ROD BUSH**



ANGELO PO 3222340

**3053124 LEFTHAND DOOR HINGE**



ANGELO PO 3222380

**3053122 LEFTHAND HINGE ROD BUSH**



ANGELO PO 3222350

**3250034 DOOR RETURN SPRING 270 mm**



ANGELO PO 36H1430

**3250034 DOOR RETURN SPRING 270 mm**



ANGELO PO 36H1430



Suitable for:

**3346032 PIN FOR HANDLE SPRING WHEEL**  
length 33 mm - top  $\varnothing$  25 mm  
bottom  $\varnothing$  20 mm - internal  $\varnothing$  15 mm



ANGELO PO 36C3560

Suitable for:

**3250222 SPLIT PIN  $\varnothing$  2x30 mm**  
UNI 1336 - DIN 94 - ISO 1234



ANGELO PO 31Z0170

**3346031 SPRING SUPPORT WHEEL  $\varnothing$  30 mm**



ANGELO PO 36H0450

**3053086 RIGHTHAND DOOR HINGE**  
for Dishwasher (ANGELO PO) F60P - F60PR - F60T  
F80P - F80PR



ANGELO PO 30T1340

**3786383 GASKET FLAT RUBBER  $\varnothing$  18x9x2.5 mm**  
for Dishwasher (ANGELO PO) F60P - F60PR - F60T  
F80P - F80PR



ANGELO PO 3152010

**3053087 LEFTHAND DOOR HINGE**  
complete with screw and gasket  
for Dishwasher (ANGELO PO) F60P - F60PR - F60T  
F80P - F80PR



ANGELO PO 30T1350

**3053145 TURNBUCKLE FOR SPRING  $\varnothing$  18 mm**



ANGELO PO 36G7400

**3053132 CLASP  $\varnothing$  3x22 mm**  
UNI 6873 - DIN 1481 - ISO 8752



ANGELO PO 36G8370



Suitable for:

**3053147 TORSION SPRING LH  $\varnothing$  3 mm**  
length 200 mm



ANGELO PO 36G8350

# ANGELO PO



Suitable for:

**3053146 TORSION SPRING RH  $\varnothing$  3 mm**  
length 200 mm



ANGELO PO 36G8360

## Hose-end fittings

**3315025 HOSE-END FITTING  $\varnothing$  1/2" M**  
for Dishwasher (ANGELO PO) L40 - L60  
for Dishwasher hood type (ANGELO PO) L100 - L80



ANGELO PO 33Q5100

**3315016 HOSE-END FITTING 90°  $\varnothing$  1/4" x  $\varnothing$  13 mm**  
for rinse arm



ANGELO PO 3233560

ANGELO PO 33Q4270

**3315102 T HOSE-END FITTING 11.5 mm**



ANGELO PO 33M0580

ANGELO PO 33Q4450

**3315015 T-SHAPED FITTING REDUCED**  
two connections  $\varnothing$  12 and one  $\varnothing$  7 mm



ANGELO PO 35Z1090

## Hydraulic piping

**3450622 PRESSURE SWITCH PIPE  $\varnothing$  5x13 mm - 5 m**  
temperature -30°+110°C  
operating pressure 10 bar  
burst pressure 40 bar  
non-toxic rubber hose  
external  $\varnothing$  13 mm  
internal  $\varnothing$  5 mm  
5-m bundles  
for 50-m bundles see 3450652



ANGELO PO 111AA04

**3450652 PRESSURE SWITCH PIPE  $\varnothing$  5x13 mm - 50 m**  
temperature -30°+110°C  
operating pressure 10 bar  
burst pressure 40 bar  
non-toxic rubber hose  
external  $\varnothing$  13 mm  
internal  $\varnothing$  5 mm  
50-m bundles  
for 5-m bundles see 3450622



ANGELO PO 111AA04



# ANGELO PO



Suitable for:

**3450114 PVC PIPE  $\varnothing$  4/7 mm - 10 mt**  
alimentary



ANGELO PO 111AA09

ANGELO PO 111AA09\_10MT

Suitable for:

**3450197 RUBBER HOSE  $\varnothing$  11x19 mm - 45 mt**  
temperature  $-30^{\circ}+110^{\circ}\text{C}$   
operating pressure 10 bar  
burst pressure 40 bar  
non-toxic rubber hose  
external  $\varnothing$  19 mm  
internal  $\varnothing$  11 mm  
45 m bundles  
for 5-m bundles see 3450297



ANGELO PO 131AA14

ANGELO PO 131AA16

**3450297 RUBBER HOSE  $\varnothing$  11x19 mm - 5 m**  
temperature  $-30^{\circ}+110^{\circ}\text{C}$   
operating pressure 10 bar  
burst pressure 40 bar  
non-toxic rubber hose  
external  $\varnothing$  19 mm  
internal  $\varnothing$  11 mm  
5-m bundles  
for 50-m bundles see 3450197



ANGELO PO 131AA14

ANGELO PO 131AA16

**3450211 RUBBER PIPE  $\varnothing$  10x17 mm - 40 m**  
operating temperature  $-40+100^{\circ}\text{C}$



ANGELO PO 131AA12

**3450651 RUBBER PIPE  $110^{\circ}\text{C}$ .  $\varnothing$  10x16 mm - 40 m**  
temperature  $-30^{\circ}+110^{\circ}\text{C}$   
operating pressure 10 bar  
burst pressure 40 bar  
non-toxic rubber hose  
external  $\varnothing$  16 mm  
internal  $\varnothing$  10 mm  
40-m rolls  
for 5-m rolls see 3450621



ANGELO PO 111AA05

**3450621 RUBBER PIPE  $110^{\circ}\text{C}$ .  $\varnothing$  10x16 mm - 5 m**  
temperature  $-30^{\circ}+110^{\circ}\text{C}$   
operating pressure 10 bar  
burst pressure 40 bar  
non-toxic rubber hose  
external  $\varnothing$  16 mm  
internal  $\varnothing$  10 mm  
for 40 m rolls see 3450651



ANGELO PO 111AA05

**3450118 RUBBER PIPE 8x15 mm INDUSTRIA 10**  
sold per meter



ANGELO PO 33M1310



## Indicator lights

**3221055** INDICATOR LIGHT BLUE 220V  
mounting hole 28x28 mm



ANGELO PO 32W1250

**3221097** INDICATOR LIGHT NEUTRAL 220V  
head ø 8 mm - 120°C



ANGELO PO 32W4220

**3221054** INDICATOR LIGHT GREEN 220V  
mounting hole 28x28 mm



ANGELO PO 32W1230

**3221097** INDICATOR LIGHT NEUTRAL 220V  
head ø 8 mm - 120°C



ANGELO PO 32W4220

**3221034** INDICATOR LIGHT GREEN 400V  
head ø 13.5 mm - hole ø 10 mm - 120°C  
universal application



ANGELO PO 32W1560

ANGELO PO 32W1561

ANGELO PO 32W1562

**3221430** INDICATOR LIGHT ORANGE 400V  
head ø 14 mm - hole ø 10 mm  
universal application



ANGELO PO 3106730+3101450

ANGELO PO 32W2240

ANGELO PO 32W2241

**3221035** INDICATOR LIGHT RED 400V  
head ø 13.5 mm - hole ø 10 mm - 120°C  
universal application



ANGELO PO 32W1550

ANGELO PO 32W1551

**3221011** INDICATOR LIGHT ORANGE 230V  
head ø 13.5 mm - hole ø 10 mm - 120°C  
universal application



ANGELO PO 3106730

ANGELO PO 32W0790

ANGELO PO 32W0791

**3221032** INDICATOR LIGHT GREEN 230V  
head ø 13.5 mm - hole ø 10 mm - 120°C  
universal application



ANGELO PO 3106710

ANGELO PO 32W1330

ANGELO PO 32W1331



Suitable for:

# ANGELO PO



**3221033 INDICATOR LIGHT RED 230V**  
head  $\varnothing$  13.5 mm - hole  $\varnothing$  10 mm - 120°C  
universal application

Suitable for:



ANGELO PO 32W1340

**3221096 INDICATOR LIGHT ORANGE 230V**  
head  $\varnothing$  7 mm - hole  $\varnothing$  6 mm  
wire connection length 200 mm



ANGELO PO 32W2250

**3221635 INDICATOR LIGHT WHITE 220V**  
mounting hole 28x28 mm



**3221097 INDICATOR LIGHT NEUTRAL 220V**  
head  $\varnothing$  8 mm - 120°C



ANGELO PO 32W1220

ANGELO PO 32W4220

## Inlet hoses

**3449001 INLET ELBOW HOSE  $\varnothing$  3/4" FF 1500 mm**  
thermoplastic hose  $\varnothing$  10x16 mm  
nylon fittings  $\varnothing$  3/4" with gaskets  
max temperature 90°C  
max pressure 10 bar



ANGELO PO 33M0350

## Ironmongery (screws,nuts,washers)

**1528630 HEXAGON HEAD SCREW M5x10**  
stainless steel - UNI 5739 - DIN 933 - ISO 4017

**1349504 NUT  $\varnothing$  1/2" KEY 25x6 mm**



ANGELO PO 31A0370

ANGELO PO 33Q4410



Suitable for:

Suitable for:

**1186399 WASHER FLAT M16**  
 internal/external  $\varnothing$  17/30 mm - thickness 3 mm  
 in zinc plated iron alloy  
 UNI 6592 - DIN 125 A - ISO 7089



ANGELO PO 3121440

## Knobs

**3241114 KNOB WHITE  $\varnothing$  38 mm**  
 square hole 5x5 mm  
 for selector switch



ANGELO PO 36M1580

**3241116 KNOB WHITE  $\varnothing$  38 mm**  
 D-shaped hole 6x4.6 mm  
 for thermostat and programme switch



ANGELO PO 36M1590

**3241186 SELECTOR KNOB  $\varnothing$  38 mm**  
 D hole 6x4.6 mm for selector switch  
 for Dishwasher (ANGELO PO) F60P - F60PR - F60T  
 F80P - F80PR - L40 - L40S - L45 - L60  
 for Dishwasher hood type (ANGELO PO) L100 - L80



ANGELO PO

ANGELO PO 36M1511

## Labels for control panels

**3399006 CONTROL PLATE ABS 600x78 mm**  
 for old and new models  
 for Dishwasher (ANGELO PO) L40 - L40S - L60



ANGELO PO 35B26220

ANGELO PO 35B8741



Suitable for:

# ANGELO PO



Suitable for:

## Lever mixers

- 3359178 SINGLE-HOLE LEVER MIXER STYL**  
cartridge with ceramic discs V090  $\varnothing$  40  
gray lever 220 mm  
pipe  $\varnothing$  20 x 300 mm  
power  $\varnothing$  1/2"



ANGELO PO CEG

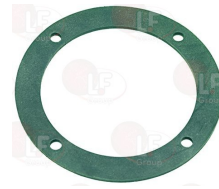
## Manifolds for dishwashers

- 3160081 HOUSING MANIFOLD FOR DRAIN INLET**  
for Dishwasher (ANGELO PO) F60P - F60PR - F60T  
F80P - F80PR - L45



ANGELO PO 33M0170

- 3186281 ASPIRATION ASSEMBLY GASKET**



ANGELO PO 3150290

- 3160082 FLANGE FOR MANIFOLD**



ANGELO PO 33M0180

- 3061029 MANIFOLD WITH LATERAL DRAIN LH**  
suction hose end fitting  $\varnothing$  56 mm  
drain tube hose end fitting  $\varnothing$  28 mm  
flange external  $\varnothing$  93 mm  
thread for ring nut  $\varnothing$  74 mm  
closed additional outlet external  $\varnothing$  11 mm



ANGELO PO 3056140



## Microswitches, magnetic

**3240179 MAGNETIC MICROSWITCH E5301C**  
0.4A 250V - contact NO - head 65x20x9 mm  
with cable length 500 mm



ANGELO PO 32W1210

**3240181 PROTECTED MAGNET 62x18x10 mm**



ANGELO PO 3210010

**3240256 MAGNETIC MICROSWITCH STEM E550 1B**  
1 contact NO 250V 1A 50W  
cable length 1200 mm  
for Dishwasher hood type (ANGELO PO) LC100 - LC130  
LC80



ANGELO PO 32W2160

**3240148 MAGNET 63x19x11 mm**  
for Dishwasher (ANGELO PO) F60P - F60PR - F60T  
F80P - F80PR



ANGELO PO 3023650

ANGELO PO 32W0870

ANGELO PO 32W1680

**9014015 MICROSWITCH MAGNETIC STEM D102 1V**  
0.04A 250V - contact NO  
cylindric sensor  $\varnothing$  10x33 mm - thread M10x0.75  
with cable length 750 mm  
for Dishwasher (ANGELO PO) F60 - F80



ANGELO PO 32W3200

ANGELO PO 32W3240

ANGELO PO 32Z8650

ANGELO PO 3023650

ANGELO PO 32W0870

ANGELO PO 32W1680

**3240148 MAGNET 63x19x11 mm**  
for Dishwasher (ANGELO PO) F60P - F60PR - F60T  
F80P - F80PR



## Microswitches, mechanical

**3240189 MICRO SWITCH M1DX20 10A 250V**



ANGELO PO 32W3020

**3240234 LIMIT SWITCH PIN**



ANGELO PO 36G6040

ANGELO PO 36G6041

**3250071 MICROSWITCH SPRING  $\varnothing$  13x25 mm**



ANGELO PO 36G7140

**3240235 RING NUT M16x1.5 mm**

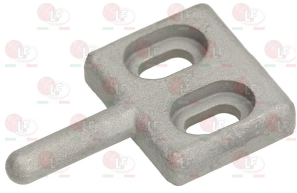


ANGELO PO 33Q5610



Suitable for:

**5003350 ROD MICROSWITCH 48x30 mm**



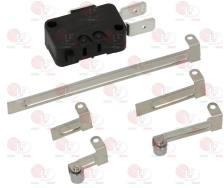
ANGELO PO 36D8360

# ANGELO PO



Suitable for:

**3240407 MICROSWITCH KIT 16A 250V**  
2 locking positions  
the kit includes 5 levers:  
lever 75 mm - lever 27 mm - lever 15 mm  
lever 15 mm with wheel - lever 27 mm with wheel



ANGELO PO 32W4240

**3240176 MICROSWITCH MOUJEN MN-5310**  
1-NO 1-NC 10A 250V  
for Dishwasher hood type (ANGELO PO)  
till 1/01/95 L100 - L80



ANGELO PO 32W1410

**3240183 MICROSWITCH 15A 250V**



ANGELO PO 32W1180

**3240410 MICROSWITCH 16(4)A 250V**



ANGELO PO 32W0960

ANGELO PO 32W1660

ANGELO PO 32W3340

## Non-return and expansion valves

**1526503 NON-RETURN VALVE  $\varnothing$  40 mm**  
ballcock - outlets  $\varnothing$  12 mm  
stainless steel cap



ANGELO PO 33D0650

ANGELO PO 33D2100

ANGELO PO 33D2330

**1186805 O-RING 0115 EPDM**  
ring thickness 2.62 mm - internal  $\varnothing$  11.91 mm



ANGELO PO 3152100

**3528083 VALVE CAP**



ANGELO PO 33Q4700



---

**O-Ring and ORM gaskets**

---

**3186338 O-RING 04143 EPDM**  
ring thickness 3.53 mm - internal  $\varnothing$  36.10 mm

ANGELO PO 3150010

---

**Pegs**

---

**3389017 CENTRAL FINGER FOR BELT**  
for Dishwasher conveyor type (ANGELO PO)  
Series N

ANGELO PO 36D0600

---

**Pins**

---

**3243576 LOCKING NUT FOR SPINDLE**



ANGELO PO 33Q1890

**3743296 RINSE IMPELLER PIN**

ANGELO PO 36G8470

---

**Position switches**

---

**3240149 LIMIT MICROSWITCH PIZZATO FR508-A**  
3A 400V  
for Dishwasher hood type (ANGELO PO)  
since 1/01/95 L100 - L80



ANGELO PO 32W3251



Suitable for:

# ANGELO PO



Suitable for:

## Pre-rinse units

### 3359209 SINGLE-HOLE PREWASH SET STYL

with pre-wash set  
mixer with basin connections  
with retention valves  
connection  $\varnothing$  3/4" M



ANGELO PO DF

## Pressure switches

### 3320027 PRESSURE SWITCH 1 LEVEL

calibration 50/30 mm  
250V 16A  
max operating temperature 85°C



ANGELO PO 32Z4700

### 3320029 PRESSURE SWITCH 1 LEVEL

calibration 40/20 mm  
250V 16A  
max operating temperature 85°C



ANGELO PO 32Z8930

### 3320036 PRESSURE SWITCH 1 LEVEL

calibration 75/35 mm  
250V 16A  
max operating temperature 85°C



ANGELO PO 32Z0070

### 3320040 PRESSURE SWITCH 1 LEVEL

calibration 70/40 mm  
250V 16A  
max operating temperature 85°C



ANGELO PO 32Z0280

### 3320042 PRESSURE SWITCH 1 LEVEL

250V 16A  
calibration 225/70 mm  
max operating temperature 85°C



ANGELO PO 32Z0860

### 3320063 PRESSURE SWITCH 1 LEVEL

calibration 110/70 mm  
250V 16A  
max operating temperature 85°C



ANGELO PO 32Z4690



Suitable for:

**3320067 PRESSURE SWITCH 1 LEVEL**  
 calibration 90/35 mm  
 250V 16A  
 max operating temperature 85°C



ANGELO PO 32V1870

ANGELO PO 32Z8880

Suitable for:

**3320071 PRESSURE SWITCH 1 LEVEL**  
 calibration 55/30 mm  
 250V 16A  
 max operating temperature 85°C



ANGELO PO 32V7060

ANGELO PO 32Z2170

ANGELO PO 32Z7190

**3320086 PRESSURE SWITCH 1 LEVEL**  
 calibration 65/10 mm  
 250V 16(4)A



ANGELO PO 32Z4740

ANGELO PO 32Z4741

**3320098 PRESSURE SWITCH 1 LEVEL**  
 calibration 250/40 mm  
 250V 16(4)A  
 for Dishwasher hood type (ANGELO PO) KD130



ANGELO PO 32V7050

**3320087 PRESSURE SWITCH 2 LEVELS**  
 1st level calibration 70/40 mm  
 2nd level calibration 90/70 mm



ANGELO PO 32Z2840

## Relays

**3351037 POWER RELAY FINDER 40.52.8.230.0000**  
 230V 50/60Hz - 2 exchange contacts 8A



ANGELO PO 32V6630

**3351021 POWER RELAY FINDER 62.82.8.230.0000**  
 230V 50/60Hz  
 2 exchange contacts 16A



ANGELO PO 32V7100

ANGELO PO 32Z2000

**1351001 POWER RELAY FINDER 62.83.8.024.0000**  
 24Vac 50/60Hz  
 3 changeover contacts 16A



ANGELO PO 32Z8640

**3351008 POWER RELAY FINDER 62.83.8.230.0000**  
 230V 50/60Hz  
 3 exchange contacts 16A



ANGELO PO 32V2950



Suitable for:

**3351602 POWER RELAY FINDER 65.31.8.230.0300**  
230V 50/60Hz  
1 contact NO 30A



ANGELO PO 32V3720

Suitable for:

**3351097 RELAY POWER FINDER 62.82.8.230.0309**  
230V 50/60Hz  
2 NO contacts 16A  
for Dishwasher hood type (ANGELO PO) KD130  
KD130A



ANGELO PO 32V7090

## Rinse aid containers and spare parts

**3066036 RINSE AID CONTAINER**  
for Dishwasher (ANGELO PO) F60P - F60PR - F60T  
F80P - F80PR - L45



ANGELO PO 33D0660

## Rinse aid pumps and accessories

**3090039 COIL 220/240V 50Hz**



ANGELO PO

**3090086 DOSING PUMP HYDRAULIC FOR RINSE AID**  
with EPDM diaphragm  
minimum pressure 0.5 bar  
inlet side hose fitting  $\varnothing$  4 mm  
pressure side hose fitting  $\varnothing$  8 mm



ANGELO PO 33D2300

**3090040 HYDRAUL. RINSE AID INJECTOR N6 E 05 G4G6**  
with diaphragm in EPDM  
minimum pressure 0.5 bar  
intake side connection for tube 4 mm.  
pressure side connection for tube 6 mm.



ANGELO PO 33D0380





Suitable for:

**3090001 HYDRAULIC RINSE AID INJECTOR**  
for rinse aid

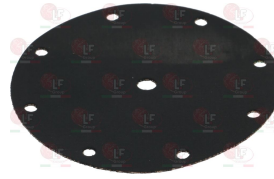


ANGELO PO 33D0060

ANGELO PO 33D0061

Suitable for:

**3090002 DIAPHRAGM FOR RINSE AID INJECTOR**



ANGELO PO

**3090010 HOSE-END ELBOW FOR RINSE AID INJECTOR**



ANGELO PO

**3090003 INLET VALVE FOR RINSE AID INJECTOR**



ANGELO PO

**3090083 RINSE AID DISPENSER 3 WAYS**  
with adjusting screw  
with pvc green tube  $\varnothing$  4x6 mm and foot filter



ANGELO PO 33D3240

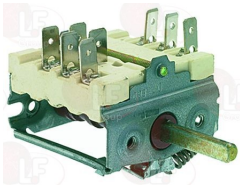
**3090107 RINSE AID INJECTOR 220V 50/60Hz**



ANGELO PO 32Z1610

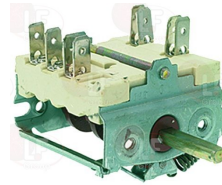
## Selector switches

**3059057 SELECTOR SWITCH 0-1 POSITIONS**  
ON-OFF-START  
16A 250V - max 150°C  
D-shaped pin  $\varnothing$  6x4.6 mm



ANGELO PO 3041660

**3057062 SELECTOR SWITCH 0-5 POSITIONS**  
contact capacity 16A 250V - max 150°C  
D-shaped pin  $\varnothing$  6x4.6 mm  
for Dishwasher (ANGELO PO) F60P - F60T - F80P  
L40 - L45 - L60  
for Dishwasher hood type (ANGELO PO) L100 - L80



ANGELO PO 32W0980

**3059006 SELECTOR SWITCH 20A 690V**  
square spindle 5x5 mm



ANGELO PO 32W1200

**3319755 SELECTOR 4 POSITIONS 16A**



ANGELO PO 32W4250



Suitable for:

# ANGELO PO



Suitable for:

## Solenoid valves

**3120004 SOLEN. VALVE ELBI TYPE 319 1 WAY 90°**  
220/240V 50/60Hz - max. temperature 90°C  
inlet 3/4" - outlet ø 10.5 mm



ANGELO PO 33D1370

ANGELO PO 33D1371

**3120504 SOLEN. VALVE ELBI TYPE 319 1 WAY 90°**  
24V 50/60Hz - max. temperature 90°C  
inlet 3/4" - outlet ø 10.5 mm



ANGELO PO

**3120005 SOLEN. VALVE ELBI TYPE 329 1 WAY 180°**  
220/240V 50/60Hz - max. temperature 90°C  
inlet 3/4" - outlet ø 10.5 mm



ANGELO PO 33D2310

ANGELO PO 33D3260

**3120006 SOLEN. VALVE ELBI TYPE 339 2 WAY 90°**  
220/240V 50/60Hz - max. temperature 90°C  
inlet 3/4" - two outlets ø 10.5 mm



ANGELO PO 33D0290

**3120007 SOLEN. VALVE ELBI TYPE 349 2 WAY 180°**  
220/240V 50/60Hz - max. temperature 90°C  
inlet 3/4" - two outlets ø 10.5 mm



ANGELO PO 33D1641

ANGELO PO 33D3250

**3120511 SOLEN. VALVE ELBI TYPE 350 1 WAY 90°**  
24V 50Hz - max. temperature 90°C  
inlet 3/4" - outlet ø 13.5 mm



ANGELO PO

**3120408 SOLEN. VALVE T&P 1 WAY 90°**  
230V 50/60Hz - max. temperature 90°C  
inlet 3/4" - outlet ø 13.5 mm



ANGELO PO 33D3280

**3120400 SOLENOID VALVE INVENSYS 1-WAY 90°**  
12Vac/dc 50/60Hz - max. temperature 90°C  
inlet 3/4" - outlet ø 13.5 mm  
operating pressure from 0.2 to 10 bar  
flow rate 1.2 m3/h



ANGELO PO



Suitable for:

**3120541 SOLENOID VALVE L140B5  $\varnothing$  1/2" FF 24V**  
 for water  
 normally closed  
 max. temperature 100°C  
 max. differential pressure 10 bar  
 coil 24V 50/60Hz



ANGELO PO 33D1060

Suitable for:

**3120112 SOLENOID VALVE L145R2  $\varnothing$  1" FF 230V**  
 for steam  
 NC (ex L142 M2)  
 max. temperature 175°C  
 max. pressure differential 12 bar  
 coil 220V 50Hz



ANGELO PO 33D1420

**3120610 SOLENOID VALVE L145R2 1/2" FF 24V**  
 for steam  
 normally closed (ex L142 M2)  
 max. temperature 175°C  
 max. differential pressure 12 bar  
 coil 24V 50Hz



ANGELO PO 33D0570

**3120038 SOLENOID VALVE L153 D5  $\varnothing$  1" FF 230V**  
 for steam  
 NC (ex 149D4)  
 max. temperature 140°C  
 coil 230V 50Hz



ANGELO PO 33D0560

**3120057 SOLENOID VALVE L182B01  $\varnothing$  1/2" FF 230V**  
 EX L180  
 for water  
 NC  
 max. temperature 100°C  
 max. pressure differential 16 bar  
 coil 230V 50/60Hz



ANGELO PO 33D0070

ANGELO PO 33D1460

**3120557 SOLENOID VALVE L182B01 1/2" FF 24V**  
 EX L180  
 for water  
 NC  
 max temperature 100°C  
 max differential pressure 16 bar  
 coil 24V 50/60Hz



ANGELO PO

**3120558 SOLENOID VALVE L182B17 3/4" FF 24V**  
 EX L180  
 for water  
 NC  
 max. temperature 100°C  
 max. differential pressure 16 bar  
 coil 24V 50/60Hz



ANGELO PO 33D1050

**3120261 SOLENOID VALVE MÜLLER 1 WAY 180°**  
 220/240V 50/60Hz - max. temperature 90°C  
 inlet 3/4" - outlet  $\varnothing$  10.5 mm



ANGELO PO 33D2460



Suitable for:

**3120500 SOLENOID VALVE MÜLLER 2 WAY 180°**  
230V 50Hz - max. temperature 90°C  
inlet 3/4" - two outlets ø 10.5 mm



ANGELO PO 3014720

ANGELO PO 3014721

Suitable for:

**3120537 SOLENOID VALVE MÜLLER 2 WAY 180°**  
220/240V 50/60Hz - max. temperature 90°C  
inlet 3/4" - two outlets ø 10.5 mm



ANGELO PO 33D1710

ANGELO PO 33D2410

## Springs

**5024902 DOOR SPRING SET 2.95Kg**  
ø external dimensions 50x50 mm  
internal hole ø 8 mm



ANGELO PO 36G8750

**3250066 HOOD LIFTING SPRING ø 39x390 mm**  
for DISHWASHER 1000-1300-1300S



ANGELO PO 36G8870

**1186504 WASHER FLAT M10**  
internal/external ø 10.5/20 mm - thickness 2 mm  
stainless steel - UNI 6592 - DIN 125 A - ISO 7089



ANGELO PO 3120080

ANGELO PO 3128790

**3250069 SPRING FOR DOOR ø 44x40 mm**  
carrying capacity: kg 5.2  
for TR3000



ANGELO PO 36G8740



## Supports

- 8000046 SUPPORT PEG SLIDEWAYS 79x45x52 mm**  
for Dishwasher pull-through (ANGELO PO) CS243D  
CS243S - CS370AD - CS370AS - CS370D - CS370S  
C165D - C165S - C207D - C207S - C304AD  
C304AS - C304D - C304S



ANGELO PO 30T3390

## Supports for wash and rinse arms

- 3743142 ARM TOP DRUM**



ANGELO PO 36G9070

- 3243573 FLANGE ø 92 mm FOR SUPPORT**  
for Dishwasher (ANGELO PO) F60P - F60PR - F60T  
F80P - F80PR - L45



ANGELO PO 33M0360

- 3243572 LOWER FITTING**  
for Dishwasher (ANGELO PO) F60P - F60PR - F60T  
F80P - F80PR - L45



ANGELO PO 3070540

ANGELO PO 33M0340

- 3243939 LOWER FITTING SPACER**  
external ø 80 mm  
for Dishwasher (ANGELO PO) F60P - F60PR - F60T  
F80P - F80PR - L45



ANGELO PO 33M0300

- 3243571 LOWER WASH ARM ASSEMBLY SUPPORT**  
for Dishwasher (ANGELO PO) F60P - F60PR - F60T  
F80P - F80PR - L45



ANGELO PO 33M0130

- 3243843 LOWER WASH ARM ASSEMBLY SUPPORT**



ANGELO PO 36G9020

- 3186431 GASKET FLAT EPDM ø 60x47x3 mm**  
for wash support



ANGELO PO 37Q4220



Suitable for:

**3243845 RING NUT FOR LOWER SUPPORT**



ANGELO PO 33Q4220

**3243844 LOWER WASH ARM ASSEMBLY SUPPORT**



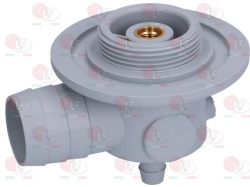
ANGELO PO 33Q4160

**3243845 RING NUT FOR LOWER SUPPORT**



ANGELO PO 33Q4220

**3743007 LOWER WASH SUPPORT**



ANGELO PO 33M1670

**3743197 RING NUT FOR BOTTOM DRUM**



ANGELO PO 36G9130

**3243483 ROTATING BOSS SUPPORT**



ANGELO PO 36G8070

# ANGELO PO



Suitable for:

**3243841 UPPER/LOWER SUPPORT SPINDLE**



ANGELO PO 36G9080

**3186431 GASKET FLAT EPDM  $\varnothing$  60x47x3 mm for wash support**



ANGELO PO 37Q4220

**3243841 UPPER/LOWER SUPPORT SPINDLE**



ANGELO PO 36G9080

**3186014 O-RING 06225 EPDM  $\varnothing$  67 mm ring thickness 5.34 mm - internal  $\varnothing$  56.52 mm**



ANGELO PO 3150430

ANGELO PO 3151960

ANGELO PO 37Q5260

**1186805 O-RING 0115 EPDM ring thickness 2.62 mm - internal  $\varnothing$  11.91 mm**



ANGELO PO 3152100

**3243388 WASH ARM ASSEMBLY SUPPORT**



ANGELO PO 33M1680

**3243838 WASH ARM ASSEMBLY SUPPORT**



ANGELO PO 36G9160

**3243839 GASKET FOR SUPPORT**  
external  $\varnothing$  90 mm  
internal  $\varnothing$  57 mm  
thickness 3 mm



ANGELO PO 37Q4230

**3243840 FLANGE FOR UPPER SUPPORT**  
external  $\varnothing$  100 mm  
internal  $\varnothing$  57 mm



ANGELO PO 36U0740

**3243841 UPPER/LOWER SUPPORT SPINDLE**



ANGELO PO 36G9080

## Switches

**3319012 BIPOLAR SWITCH GREEN 16A 250V**  
16(4)A 250V - max. temperature 120°C  
with indicator light and push-button cap  
mounting hole 22x30 mm - silk screen print 0 - I



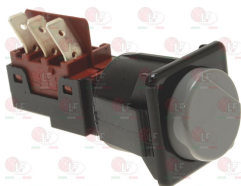
ANGELO PO 32W0631

**3319650 PUSH-BUTTON SQUARE YELLOW 23x23 mm "STAR"**



ANGELO PO 3273760

**3319427 SWITCH 1-POLE GREY**  
contact capacity 16A 250V  
button  $\varnothing$  23 mm - - mounting hole 28x28 mm



ANGELO PO 32V2030

**3319951 SWITCH 2 POLE GREEN 16A 250V**  
16(4)A 250V - max. temperature 125°C  
with indicator light - mounting hole 25x27 mm  
lead connector 6.35x0.8 mm



ANGELO PO 32W0990

ANGELO PO 32W3970

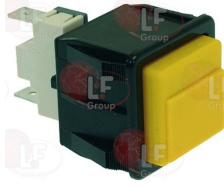


Suitable for:

Suitable for:

**3319232 YELLOW CYCLE START SWITCH**  
16(8)A/250V 2 contacts  
mounting hole 28x28 mm

**3319715 PUSH-BUTTON SQUARE YELLOW 23x23 mm**



ANGELO PO 32V2050

ANGELO PO 32W4270

**1319082 SINGLE-POLE PUSH BUTTON 16A 250V**



ANGELO PO 3040850

## Telethermometers

**3441008 TELE-THERMOMETER BLACK  $\varnothing$  52 mm 0-120°C**  
plastic case  
PVC covered capillary 1500 mm  
bulb  $\varnothing$  6.5x2.6 mm

**3441011 TELE-THERMOMETER BLACK 56x25 mm 0-120°C**  
plastic case  
capillary length 1500 mm  
bulb  $\varnothing$  6x15 mm



ANGELO PO 32Z2930

ANGELO PO 32V1900

ANGELO PO 32Z0020

**3441076 TELE-THERMOMETER 63x11 mm 0-120°C**  
plastic case  
covered capillary 2000 mm  
bulb  $\varnothing$  6x33 mm



ANGELO PO 32V7230

## Terminal blocks

**3247015 TERMINAL BLOCK 12-POLES OF PLASTIC**  
for cable 0.75-4 mm<sup>2</sup>  
operating temperature 150°C  
nominal voltage 450V

**3247003 TERMINAL BLOCK 2-POLES OF CERAMIC**  
for cable 0.75-4 mm<sup>2</sup>  
operating temperature 300°C  
nominal voltage 450V  
dimensions 21x18x16 mm



ANGELO PO 32D1450

ANGELO PO 3000060





Suitable for:

**3247016** **TERMINAL BLOCK 3-POLES FV273 40A 450V**  
for cable max 6 mm<sup>2</sup>  
operating temperature 150°C  
nominal voltage 450 V

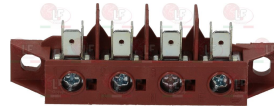


ANGELO PO 32D0171

ANGELO PO 32D0380

Suitable for:

**3247037** **TERMINAL BLOCK 4-POLES FV173 40A 600V**  
for cable max 6 mm<sup>2</sup>  
operating temperature 150°C  
nominal voltage 450 V



ANGELO PO 32D1800

**3247009** **TERMINAL BLOCK 6-POLES FV122/B 40A 600V**  
for cable max 6 mm<sup>2</sup>  
operating temperature 150°C  
nominal voltage 450 V



ANGELO PO 32D0250

ANGELO PO 32D0251

## Terminals and electrical connectors

**3051022** **FASTON COVER FRONTAL**  
for female faston of 6.3 mm



ANGELO PO 32D0080

## Thermostats

**3444165** **BOILER SAFETY THERMOSTAT 90-110° C**  
capillary 1000 mm  
bulb ø 6.5x90 mm  
15A 250V



ANGELO PO 32Z8530

ANGELO PO 32Z8830



Suitable for:

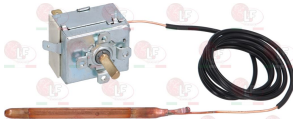
# ANGELO PO



Suitable for:

## Thermostats

**3444197 SINGLE PHASE THERMOSTAT 0-90°C**  
 15A 250V  
 covered capillary 1000 mm  
 bulb  $\varnothing$  6.5x98 mm  
 D-shaped pin  $\varnothing$  6x4.6 mm



ANGELO PO 32V1910

ANGELO PO 33V1910

**3444008 KNOB BLACK  $\varnothing$  41 mm 0-90°C**  
 D-shaped hole 6x4.6 mm  
 for thermostat IMIT



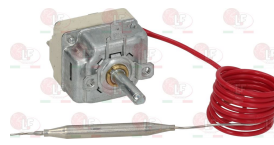
ANGELO PO 36M2830

**3444282 SINGLE-PHASE THERMOSTAT 90-110°C**  
 with manual reset  
 covered capillary 1500 mm  
 bulb  $\varnothing$  6.5x95 mm  
 15A 250V



ANGELO PO 32V7260

**3444271 SINGLE-PHASE THERMOSTAT +30+90°C**  
 covered capillary length 900 mm  
 bulb  $\varnothing$  6x70 mm  
 D shaft  $\varnothing$  6x4.6 mm  
 for boiler  
 for Dishwasher (ANGELO PO) F60P - F60T - F80P  
 L45



ANGELO PO 32V0200

**3444276 SINGLE-PHASE THERMOSTAT +56°C**  
 for tank safety  
 covered capillary 900 mm  
 bulb  $\varnothing$  6x120 mm  
 for Dishwasher (ANGELO PO) F60P - F60PR - F60T  
 F80P - F80PR - L40 - L40S - L45 - L60  
 for Dishwasher hood type (ANGELO PO) L100 - L80



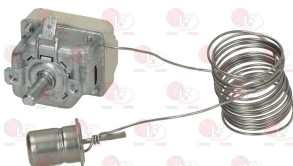
ANGELO PO 32Z2430

**3444280 SINGLE-PHASE THERMOSTAT 0-90°C**  
 covered capillary 1500 mm  
 bulb  $\varnothing$  6.5x90 mm  
 15A 250V  
 with adjusting screw



ANGELO PO 32V7240

**3444049 SINGLE-PHASE THERMOSTAT 30-90°C**  
 capillary 1700 mm  
 button bulb  $\varnothing$  15x20 mm  
 16A 250V  
 D shaft  $\varnothing$  6x4.6 mm



ANGELO PO 32Z0450

**3444059 SINGLE-PHASE THERMOSTAT 30-90°C**  
 D-shaped pin  $\varnothing$  6x4.6 mm  
 capillary 2000 mm - 16A 250V  
 bulb  $\varnothing$  6x130 mm - gland stuffing fitting M10x1  
 for Dishwasher (ANGELO PO) L40 - L60  
 for Dishwasher hood type (ANGELO PO) L100 - L80



ANGELO PO 32Z0160

ANGELO PO 32Z5880

Suitable for:

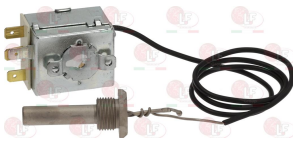
Suitable for:

**3444614 SINGLE-PHASE THERMOSTAT 90°C**  
 15A 250V  
 covered capillary 2000 mm  
 bulb  $\varnothing$  6.5x90 mm



ANGELO PO 32Z7200

**3444164 TANK THERMOSTAT 50°C**  
 covered capillary 600 mm  
 button-shaped bulb  $\varnothing$  10x48 mm  
 15A 250V



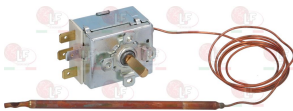
ANGELO PO 32V2630

**3060087 BRASS NUT  $\varnothing$  3/8"**



ANGELO PO 33Q2190

**3444006 THERMOSTAT SINGLE-PHASE TR2 0-210°C**  
 D-shaped pin  $\varnothing$  6x4.6 mm  
 capillary length 1000 mm - 15A 250V  
 bulb  $\varnothing$  5x140 mm



ANGELO PO 32Z8820

**3444004 THERMOSTAT SINGLE-PHASE TR2 0-90°C**  
 D-shaped pin  $\varnothing$  6x4.6 mm  
 capillary length 1500 mm - 15A 250V  
 bulb  $\varnothing$  6.5x95 mm



ANGELO PO 32Z8840

## Tubing and hoses

**3248205 HOSE FOR WATER OUTLET**  
 for Dishwasher (ANGELO PO) KD60 - KD60E - KD60EAT  
 KD60M - KD60MA - KD60ME - KD60MPS



ANGELO PO 3245830

**3248037 INLET HOSE 100 mm**  
 internal  $\varnothing$  60 mm  
 external  $\varnothing$  70 mm



ANGELO PO 33M0600

**3248139 OUTLET HOSE**  
 internal  $\varnothing$  48/35/34 mm



ANGELO PO 3031860

**3248181 OUTLET HOSE**  
 internal  $\varnothing$  40 mm -  $\varnothing$  external 50 mm  
 length 245 mm  
 for Dishwasher hood type (ANGELO PO) LC80



ANGELO PO 33M1250

ANGELO PO 33M1270



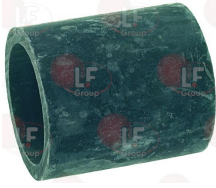
Suitable for:

# ANGELO PO



Suitable for:

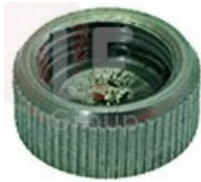
**3248193 PUMP OUTLET HOSE**  
internal  $\varnothing$  40 mm  
length 52 mm



ANGELO PO 33Q1290

## Wash and rinse arms for warewashers

**3243583 CAP FOR RINSE ARM ASSEMBLY**  
for Dishwasher (ANGELO PO) F60P - F60PR - F60T  
F80P - F80PR



ANGELO PO 36R0030

**3243834 CAP FOR RINSE ARM ASSEMBLY**  
for Dishwasher (ANGELO PO) LF50 - L45  
for Dishwasher hood type (ANGELO PO) LC100 - LC130  
LC80



ANGELO PO 36C3870

ANGELO PO 36Q0850

ANGELO PO 36U0680

**3243244 COMPLETE RINSE ARM ASSEMBLY**  
length 495 mm  
for Dishwasher (ANGELO PO) L40 - L40S - L60  
for Dishwasher hood type (ANGELO PO) L100 - L80



ANGELO PO 30Z0240

ANGELO PO 6001920

**3243246 BUSHING  $\varnothing$  26x8 mm**



ANGELO PO 36D0740

**3243248 RINSE ARM ASSEMBLY LOCKING NUT**



ANGELO PO 33Q0510

**3243937 RINSE ARM PLUG 1/4" M**  
thread  $\varnothing$  13 mm



ANGELO PO 36Q0180

**3243245 RINSE JET**  
for Dishwasher (ANGELO PO) L40 - L40S - L60  
for Dishwasher hood type (ANGELO PO) L100 - L80



ANGELO PO 33T1120

ANGELO PO 33T1121

**3243247 WASH ARM ASSEMBLY DRUM**



ANGELO PO 36D0720

Suitable for:

**3243579 COMPLETE RINSE ARM ASSEMBLY 490 mm**  
for Dishwasher (ANGELO PO) LF50 - L45  
for Dishwasher hood type (ANGELO PO) LC100 - LC130  
LC80



ANGELO PO 30Z1440

ANGELO PO 30Z1491

**3243841 UPPER/LOWER SUPPORT SPINDLE**



ANGELO PO 36G9080

**3743196 INOX PLUG**



ANGELO PO 36Q1930

**3743884 RINSE IMPELLER 490 mm**



ANGELO PO 3116580

**3122414 STAINLESS STEEL WASH ARM ASSEMBLY 495 mm**  
for Dishwasher (ANGELO PO) F60 - F80 - LF50  
for Dishwasher hood type (ANGELO PO) LC80



ANGELO PO 30Z2680

ANGELO PO 36G8540

**1186352 O-RING 02050 EPDM**  
ring thickness 1.78 mm - internal  $\varnothing$  12.42 mm



ANGELO PO 3045420

Suitable for:

**3243833 RINSE ARM ASSEMBLY LOCKING BOLT**



ANGELO PO 33Q3710

**3243575 RING NUT FOR DRUM**



ANGELO PO 33Q1860

**3243833 RINSE ARM ASSEMBLY LOCKING BOLT**



ANGELO PO 33Q3710

**3243577 LOWER RINSE ARM ASSEMBLY SPINDLE**



ANGELO PO 33Q2000

**3243574 UPPER RINSE ARM ASSEMBLY SPINDLE**  
for Dishwasher (ANGELO PO) F60P - F60PR - F60T



ANGELO PO 33Q1090



Suitable for:

**3243841 UPPER/LOWER SUPPORT SPINDLE**



ANGELO PO 36G9080

# ANGELO PO



Suitable for:

**3243842 WASH ARM ASSEMBLY DRUM**  
complete with ring nut



ANGELO PO 33M0500

**3743008 STAINLESS STEEL WASH ARM ASSEMBLY 530 mm**



ANGELO PO 36H1390

**3501215 TERMINAL CAP**  
thread  $\varnothing$  1"1/4  
for Dishwasher pull-through (ANGELO PO) CS243D  
CS243S - CS243VD - CS243VS - CS370D - CS370S  
CS370VD - CS370VS - CS466D - CS466S - CS466VD  
CS466VS - C165D - C165S - C207D - C207S  
C304D - C304S  
for Pan/utensilwashing machines (ANGELO PO) LP124  
LP124V - LP84 - LP84V



ANGELO PO 36Q0970

**3243401 UPPER RINSE ARM ASSEMBLY 300 mm**



ANGELO PO 3056440

**3243384 BUSHING FOR WASH ARM ASSEMBLY  $\varnothing$  14x11 mm**



ANGELO PO 31Z0240

**1186411 O-RING 02031 EPDM**  
ring thickness 1.78 mm - internal  $\varnothing$  7.66 mm  
for Dishwasher (ANGELO PO) LF50 - L45  
for Dishwasher hood type (ANGELO PO) LC100 - LC130  
LC80



ANGELO PO 3035830

ANGELO PO 3152210

**3501201 OPEN RINSE JET**



ANGELO PO 3035840

**3743014 SLIDING BUSH PTFE**  
 $\varnothing$  internal 10 mm.  
 $\varnothing$  external 14 mm.



ANGELO PO 31Z0250

**3243472 WASH ARM ASSEMBLY LOCKING NUT**



ANGELO PO 3203110



Suitable for:

**3243239 WASH ARM ASSEMBLY**  
for Dishwasher (ANGELO PO) L40 - L40S - L60  
for Dishwasher hood type (ANGELO PO) L100 - L80



ANGELO PO 30Z7330

**3243241 WASH ARM ASSEMBLY DRUM**



ANGELO PO 33Q3380

**3243242 WASH ARM ASSEMBLY SPINDLE**



ANGELO PO 33Q0420

**3743821 WASH ARM ASSEMBLY DRUM**



ANGELO PO 33Q3700

**3243481 WASH ARM ASSEMBLY ROTATING BOSS**



ANGELO PO 36G1430

**3186287 O-RING 0123 EPDM**  
ring thickness 2.62 mm - internal  $\varnothing$  17.86 mm



ANGELO PO 3152110

Suitable for:

**3243250 O-RING 03137 EPDM**  
ring thickness 2.62 mm - internal  $\varnothing$  34.60 mm  
for motor mixer flange



ANGELO PO 3150140

**3243243 WASH ARM ASSEMBLY LOCKING NUT**



ANGELO PO 33Q5070

**1186805 O-RING 0115 EPDM**  
ring thickness 2.62 mm - internal  $\varnothing$  11.91 mm



ANGELO PO 3152100

**3243482 SPINDLE ASSEMBLY FOR ROTATING BOSS**



ANGELO PO 36G7410



Suitable for:

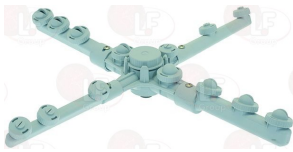
Suitable for:

**3743689 WASH ARM ASSEMBLY WITH DRUM AND RING NUT**  
length 534 mm



ANGELO PO 36G9100

**3243400 WASH/RINSE ARM ASSEMBLY LOWER**  
length 370 mm



ANGELO PO 3022840

**3243384 BUSHING FOR WASH ARM ASSEMBLY  $\varnothing$  14x11 mm**



ANGELO PO 31Z0240

**3501204 CLOSED RINSE JET**



ANGELO PO 3045430

**1186352 O-RING 02050 EPDM**  
ring thickness 1.78 mm - internal  $\varnothing$  12.42 mm



ANGELO PO 3045420

**3501203 BIG HOLE OPEN RINSE JET**  
complete with gasket



ANGELO PO 3040900

**3501202 CLOSED RINSE JET**  
with "O" ring



ANGELO PO 3040290

**1186411 O-RING 02031 EPDM**  
ring thickness 1.78 mm - internal  $\varnothing$  7.66 mm  
for Dishwasher (ANGELO PO) LF50 - L45  
for Dishwasher hood type (ANGELO PO) LC100 - LC130  
LC80



ANGELO PO 3035830

ANGELO PO 3152210

**3501201 OPEN RINSE JET**



ANGELO PO 3035840





Suitable for:

**3243471 WASH ARM ASSEMBLY BOSS**  
complete with bushings



ANGELO PO 3071510

## ANGELO PO



Suitable for:

**3243472 WASH ARM ASSEMBLY LOCKING NUT**



ANGELO PO 3203110

### Wash jets and accessories

**3501071 FIXED RINSE OUTLET JET**  
for Dishwasher (ANGELO PO) L40 - L40S - L60



ANGELO PO 33T3720

**3501018 RINSE JET CLAMP**  
for Dishwasher (ANGELO PO) AL75 - AL90



ANGELO PO 33T0270

**3243584 STAINLESS STEEL RINSE JET WITH COLLAR**  
for Dishwasher (ANGELO PO) F60P - F60PR - F60T  
F80P - F80PR



ANGELO PO 3035880

ANGELO PO 33T2740

ANGELO PO 3300330

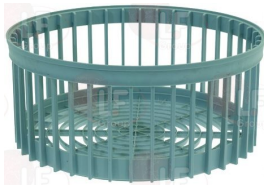
**3501062 WASH JET**



ANGELO PO 33T1130

### Washing baskets and accessories

**3055221 GLASS RACK  $\varnothing$  380x170 mm**  
made of plastic  
upper  $\varnothing$  380 mm  
lower  $\varnothing$  320 mm



ANGELO PO 3053810

### Washing showers

**3359605 WHITE SHOWER HEAD NEW  $\varnothing$  1/2" F**



ANGELO PO 33D1700

The data herewith contained may change without notice and LF SpA cannot be held responsible for possible errors stated or resulting by the use of this document. All rights reserved. No part of this publication may be reproduced without written permission by LF SpA.



## Distributing Components, Spare Parts & Accessories in original quality worldwide

- 
- LF SpA HEADQUARTERS**  
via Voltri, 80 - 47522 Cesena (FC) ITALY  
Tel. +39 0547 34 11 11 - Fax +39 0547 34 11 10  
[www.lfricambi724.it](http://www.lfricambi724.it) - [info@lfricambi.it](mailto:info@lfricambi.it)  
Export Dept. Tel. +39 0547 34 11 50 - Fax +39 0547 34 11 55  
[www.lfspareparts724.com](http://www.lfspareparts724.com) - [export@lfspareparts.com](mailto:export@lfspareparts.com)
- LF SpA HOUSEHOLD COMPONENTS DIVISION**  
Via Padriciano, 99 - AREA Science Park - 34149 Trieste (TS) ITALY  
Tel. +39 0547 34 12 42 - Fax +39 0547 34 12 48  
[www.lfspareparts724.com](http://www.lfspareparts724.com) - [info@lfspareparts.com](mailto:info@lfspareparts.com)
- EPGC Sas FRANCE**  
13, Rue des Forts - 59960 Neuville en Ferrain  
Tel. +33 (0)3 20 25 06 21 - Fax +33 (0)3 20 25 34 12  
[www.epgc.com](http://www.epgc.com) - [epgc@epgc.com](mailto:epgc@epgc.com)
- LF GmbH GERMANY**  
Junkersstrasse, 3 - D-82178 Puchheim - München  
Tel. +49 89 89 45 78 66 - Fax +49 89 89 45 78 88  
[www.lfersatzteile724.de](http://www.lfersatzteile724.de) - [info@lfersatzteile.de](mailto:info@lfersatzteile.de)
- LF China REPUBLIC OF CHINA**  
Room 403, No.2, Huadu Mansion, Lane 422, Huanghua Rd.  
Minhang Dist. - 201103 Shanghai  
Tel. +86 (0)21 33 53 66 31 - Fax +86 (0)21 33 53 66 32  
[www.lfspareparts724.com](http://www.lfspareparts724.com) - [china@lfspareparts.com](mailto:china@lfspareparts.com)
- OOO LF RUSSIAN FEDERATION**  
Ul. Anatoliya Zhivova, 8 - office 1 - 123100 Moscow  
Tel./Fax +7 495 725 26 53  
[www.lfspareparts724.ru](http://www.lfspareparts724.ru) - [info@lfspareparts.ru](mailto:info@lfspareparts.ru)
- LF Repuestos Horeca S.L.U. SPAIN**  
Poligono Industrial Carpetania - C/Miguel Faraday, 8 - 28906 Getafe  
Tel. +34 91 477 91 00 - Fax +34 91 477 90 81  
[www.lfrepuestos-horeca724.es](http://www.lfrepuestos-horeca724.es) - [info@lfrepuestos.es](mailto:info@lfrepuestos.es)
- LF Scandinavia Aps - LF Spareparts S.p.A. DENMARK**  
Nupark, 51 - 7500 Holstebro  
Tel. +45 70 70 77 33  
[www.lfspareparts724.dk](http://www.lfspareparts724.dk) - [denmark@lfspareparts.dk](mailto:denmark@lfspareparts.dk)
- LF SpA Cesena (IT) Swiss Branch Steinhausen SWITZERLAND**  
Sennweidstrasse, 45 - CH-6312 Steinhausen  
Tel. +41 (0)41 760 15 80/1 - Fax +41 (0)41 760 15 85  
[www.lfersatzteile724.ch](http://www.lfersatzteile724.ch) - [info@lfersatzteile.ch](mailto:info@lfersatzteile.ch)
- LF Spare Parts Ltd. UNITED KINGDOM**  
A10a Lakeside Business Park, Broadway Lane  
South Cerney, Gloucestershire GL7 5XL  
Tel. +44 (0)1285 86 16 25 - Fax +44 (0)1285 86 39 49  
[www.lfspareparts724.co.uk](http://www.lfspareparts724.co.uk) - [info@lfspareparts.co.uk](mailto:info@lfspareparts.co.uk)
- LF Central Est Europe S.r.o. CZECH REPUBLIC**  
Antala Staska 1859/34  
14000 Praha 4 - KRC  
Tel. +420 730 156 910  
[www.lfspareparts724.cz](http://www.lfspareparts724.cz) - [info@lfspareparts.cz](mailto:info@lfspareparts.cz)
- LF SPARE PARTS INC. USA**  
Legal address:  
155 Office Plaza Dr - Suite A - Tallahassee, FL 32301  
Business/Mailing address:  
1100 South Tower, 225 Peachtree St., N.E. - Atlanta, GA 30303, USA  
Tel. +1-404-525-2600 - Fax +1-404-586-3528  
[www.lfspareparts724.us](http://www.lfspareparts724.us) - [info@lfspareparts.us](mailto:info@lfspareparts.us)  
Tel. West Coast and Midwest: 206-349-1525 Sauro  
Tel. East Coast and the Caribbean: 786-817-1764 Luis
- 
- AUSTRALIA AND NEW ZEALAND**  
[www.lfspareparts724.com](http://www.lfspareparts724.com)  
[andrea.calvio@lfspareparts.com](mailto:andrea.calvio@lfspareparts.com)
- AUSTRIA**  
[www.lfersatzteile724.at](http://www.lfersatzteile724.at)  
[info@lfersatzteile.at](mailto:info@lfersatzteile.at)
- BALKAN COUNTRIES**  
[www.lfspareparts724.com](http://www.lfspareparts724.com)  
[matija.ramov@lfspareparts.com](mailto:matija.ramov@lfspareparts.com)
- BALTIC COUNTRIES**  
[www.lfspareparts724.com](http://www.lfspareparts724.com)  
[inara.silina@lfspareparts.com](mailto:inara.silina@lfspareparts.com)
- LATIN AMERICA AND THE CARRIBEANS**  
[www.lfrepuestos-horeca724.es](http://www.lfrepuestos-horeca724.es)  
[export@lfrepuestos.es](mailto:export@lfrepuestos.es)
- POLAND**  
[www.lfspareparts724.pl](http://www.lfspareparts724.pl)  
[info@lfspareparts.pl](mailto:info@lfspareparts.pl)
- SOUTH KOREA**  
[www.lfspareparts724.com](http://www.lfspareparts724.com)  
[fabio.doni@lfspareparts.com](mailto:fabio.doni@lfspareparts.com)
- TURKEY**  
[www.lfyedekparca724.com](http://www.lfyedekparca724.com)  
[export@lfspareparts.com](mailto:export@lfspareparts.com)