



Spare parts for the professional sector:  
**Food processing equipment**



Suitable for:

**OMS**



This catalogue is automatically generated.  
Therefore, the sequence of the items might  
not be always shown at best.  
Updates will be issued in case of additions  
and/or amendments.

*Suitable **universal spare parts** may not be included*





Suitable for:

**OMS**



Suitable for:

## Accident prevention devices-protections

**5027371 CARRIAGE PROTECTION OF POLYCARBONATE**  
max dimensions 145x210 mm  
distance between holes 86 mm - with MA6 screws  
for ANGELO PO SLICER AFT35VS  
for OMS SLICER TGL250-TG220



OMS

**9014177 FINGER PROTECTION FOR PLATE**  
width 40 mm - height 80 mm  
overall height 165 mm - distance bw holes 24 mm  
for Slicer (OMS)



OMS

## Belts

**9062020 BELT MULTIGRIP TB2 330 H12 5 GROOVES**  
for Slicer (OMS) 220I



OMS

**9003757 MULTIGRIP BELT J 508 H24 9 GROOVES**  
for Slicer (OMS) 300C



OMS

**9062037 MULTIGRIP BELT TB2 430 H16 7 GROOVES**  
for Slicer (OMS) 250V - 275V



OMS LF-9062094

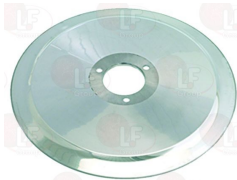
**9003549 V-BELT 10x475 mm Z18 3/4**  
for Slicer (OMS) 350G



OMS

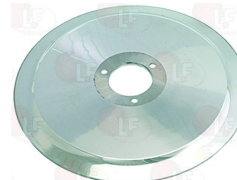
## Blades for meat slicer

**9006510 ST. STEEL BLADE  $\varnothing$  220-40-3-180 MOD.C**  
B = external  $\varnothing$  220 mm  
D = central hole  $\varnothing$  40 mm  
C = blade internal  $\varnothing$  180 mm  
3 fastening screws  
100CR6 forged stainless steel



OMS

**9006525 ST. STEEL BLADE  $\varnothing$  300-40-3-254 MOD.C**  
B = external  $\varnothing$  300 mm  
D = central hole  $\varnothing$  40 mm  
C = blade internal  $\varnothing$  254 mm  
3 fastening screws  
100CR6 forged stainless steel



OMS

## Bushings

**9002562** GLACIER BUSH  $\varnothing$  25-22x20 mm  
 external  $\varnothing$  25 mm  
 internal  $\varnothing$  22 mm  
 height 20 mm  
 for Slicer (OMS) G330



OMS

**9002500** GLACIER BUSH  $\varnothing$  25-22x25 mm  
 external  $\varnothing$  25 mm  
 internal  $\varnothing$  22 mm  
 height 25 mm



OMS

## Eccentrics

**9707010** PLASTIC ECCENTRIC OMS  $\varnothing$  76 mm  
 internal hole  $\varnothing$  18 mm - grooving 8 mm  
 for Slicer (OMS) CE



OMS

**9707005** PLASTIC ECCENTRIC SIRMAN  $\varnothing$  85 mm  
 internal hole  $\varnothing$  18 mm - groove 8 mm  
 with external stopping notch



OMS

## Electronic printed-circuit boards

**9014169** MOTHERBOARD 230/400V  
 external dimensions 127x43 mm  
 for Slicer (OMS) - Series 350



OMS

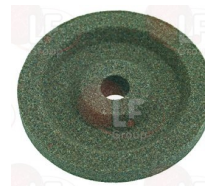
## Emeries for blades

**9731005** RIMMED GRINDER 43-6-8  
 A = external  $\varnothing$  43 mm  
 B = hole  $\varnothing$  6 mm  
 H = height 8 mm  
 COARSE GRAIN



OMS

**9013201** RIMMED GRINDERS WITH DRUM 40-6-7.8  
 A = external  $\varnothing$  40 mm  
 B = hole  $\varnothing$  6 mm  
 H = height 7.8 mm  
 FINE GRAIN



OMS



Suitable for:

# OMS



**9013202 RIMMED GRINDERS WITH DRUM 40-6-7.8**

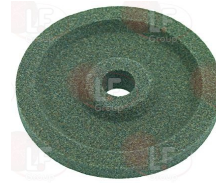
A = external  $\varnothing$  40 mm  
B = hole  $\varnothing$  6 mm  
H = height 7.8 mm  
COARSE GRAIN



OMS

**9013219 RIMMED GRINDERS WITH DRUM 50-8-8**

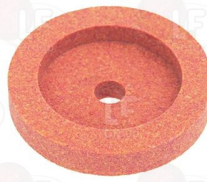
A = external  $\varnothing$  50 mm  
B = hole  $\varnothing$  8 mm  
H = height 8 mm  
FINE GRAIN



OMS

**9013101 RIMMED GRINDERS 40-6-7.8**

A = external  $\varnothing$  40 mm  
B = hole  $\varnothing$  6 mm  
H = height 7.8 mm  
FINE GRAIN



OMS

**9013135 RIMMED GRINDERS 50-8-8**

A = external  $\varnothing$  50 mm  
B = hole  $\varnothing$  8 mm  
H = height 8 mm  
FINE GRAIN



OMS

**9013136 RIMMED GRINDERS 50-8-8**

A = external  $\varnothing$  50 mm  
B = hole  $\varnothing$  8 mm  
H = height 8 mm  
COARSE GRAIN



OMS

**9013151 RIMMED GRINDERS 51-8-7.5**

A = external  $\varnothing$  51 mm  
B = hole  $\varnothing$  8 mm  
H = height 7.5 mm  
FINE GRAIN



OMS LF-9013133

OMS

**9013148 STEPPED EMERY WHEEL 45-6-10**

A =  $\varnothing$  external  $\varnothing$  45 mm  
B =  $\varnothing$  hole  $\varnothing$  6 mm  
H = height 10 mm  
FINE GRAIN



OMS

**9013113 STEPPED EMERY WHEEL 45-6-9**

A = external  $\varnothing$  45 mm  
B = hole  $\varnothing$  6 mm  
H = height 9 mm  
COARSE GRAIN  
for Slicer (OMS) GIADA - 250 - 300



OMS



**Microswitches, mechanical**

**9014018 MICROSWITCH 16(4)A 250V**



OMS

**Pins**

**9011001 PIN FOR SLICER BLADE COVER**  
 square part 15x15 mm - hole  $\varnothing$  8 mm  
 fastening thread M12 - overall height 23 mm  
 for Slicer (OMS) 350 - 370



OMS

**Sharpeners**

**9701009 BLADE SHARPEN.OMS-AMB 250-275-300-300CE**  
 without cover  
 for Slicer (OMS) 250 - 275 - 300 - 300CE



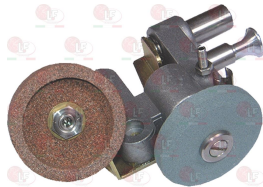
OMS

**9701002 BLADE SHARPENER OMS 350**  
 with cover  
 for Slicer (OMS) TV350VERTICALE



OMS

**9701018 BLADE SHARPENER KOLOSSAL 300-350-IEV**  
 without cover  
 for Slicer (OMS) 330CE - 350CE - 370CE



OMS



Suitable for:

**OMS**

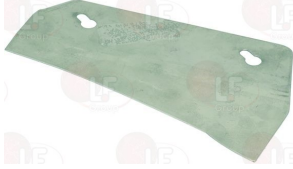


Suitable for:

## Slice protectors

### 9711014 SLICE GUARD FOR SLICER OF ST. STEEL

external dimensions 200x110 mm  
distance between holes 118 mm  
for Slicer (OMS) 350



OMS

### 9711015 SLICE GUARD FOR SLICER OF ST. STEEL

external dimensions 180x65 mm  
distance between holes 62 mm  
for Slicer (OMS) 300I

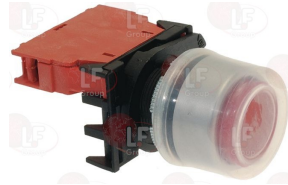


OMS

## Switches

### 9319052 RED STOP PUSH-BUTTON 16A 600V

GIOVENZANA - with push-button cap  
1 normally closed contact  
mounting hole  $\varnothing$  22 mm



OMS LF-5025010

## Tie rods for blade cover

### 5036739 BLADE COV.TIE ROD PIN 225 mm THREAD M8

micro switch holder  $\varnothing$  12x25 mm  
for Slicer (OMS) TGI350



OMS

### 9714019 BLADE COVER TIE ROD PIN 235 mm PITCH M7

microswitch support  $\varnothing$  12x115 mm  
for Slicer (OMS) TG350



OMS

### 9013531 BLADE COVER TIE ROD SHAFT 146mm PITCH M6

for Slicer (OMS) 220



OMS

### 9013530 BLADE COVER TIE ROD SHAFT 190mm PITCH M8

micro support  $\varnothing$  12x75 mm  
for Slicer (OMS) TV300 - TV330



OMS



The data herewith contained may change without notice and LF SpA cannot be held responsible for possible errors stated or resulting by the use of this document. All rights reserved. No part of this publication may be reproduced without written permission by LF SpA.



## Distributing Components, Spare Parts & Accessories in original quality worldwide

- 
- LF SpA HEADQUARTERS**  
via Voltri, 80 - 47522 Cesena (FC) ITALY  
Tel. +39 0547 34 11 11 - Fax +39 0547 34 11 10  
[www.lfircambi724.it](http://www.lfircambi724.it) - [info@lfircambi.it](mailto:info@lfircambi.it)  
Export Dept. Tel. +39 0547 34 11 50 - Fax +39 0547 34 11 55  
[www.lfspareparts724.com](http://www.lfspareparts724.com) - [export@lfspareparts.com](mailto:export@lfspareparts.com)
- LF SpA HOUSEHOLD COMPONENTS DIVISION**  
Via Padriciano, 99 - AREA Science Park - 34149 Trieste (TS) ITALY  
Tel. +39 0547 34 12 42 - Fax +39 0547 34 12 48  
[www.lfspareparts724.com](http://www.lfspareparts724.com) - [info@lfspareparts.com](mailto:info@lfspareparts.com)
- EPGC Sas FRANCE**  
13, Rue des Forts - 59960 Neuville en Ferrain  
Tel. +33 (0)3 20 25 06 21 - Fax +33 (0)3 20 25 34 12  
[www.epgc.com](http://www.epgc.com) - [epgc@epgc.com](mailto:epgc@epgc.com)
- LF GmbH GERMANY**  
Junkersstrasse, 3 - D-82178 Puchheim - München  
Tel. +49 89 89 45 78 66 - Fax +49 89 89 45 78 88  
[www.lfersatzteile724.de](http://www.lfersatzteile724.de) - [info@lfersatzteile.de](mailto:info@lfersatzteile.de)
- LF China REPUBLIC OF CHINA**  
Room 403, No.2, Huadu Mansion, Lane 422, Huanghua Rd.  
Minhang Dist. - 201103 Shanghai  
Tel. +86 (0)21 33 53 66 31 - Fax +86 (0)21 33 53 66 32  
[www.lfspareparts724.com](http://www.lfspareparts724.com) - [china@lfspareparts.com](mailto:china@lfspareparts.com)
- OOO LF RUSSIAN FEDERATION**  
Ul. Anatoliya Zhivova, 8 - office 1 - 123100 Moscow  
Tel./Fax +7 495 725 26 53  
[www.lfspareparts724.ru](http://www.lfspareparts724.ru) - [info@lfspareparts.ru](mailto:info@lfspareparts.ru)
- LF Repuestos Horeca S.L.U. SPAIN**  
Poligono Industrial Carpetania - C/Miguel Faraday, 8 - 28906 Getafe  
Tel. +34 91 477 91 00 - Fax +34 91 477 90 81  
[www.lfrepuestos-horeca724.es](http://www.lfrepuestos-horeca724.es) - [info@lfrepuestos.es](mailto:info@lfrepuestos.es)
- LF Scandinavia Aps - LF Spareparts S.p.A. DENMARK**  
Nupark, 51 - 7500 Holstebro  
Tel. +45 70 70 77 33  
[www.lfspareparts724.dk](http://www.lfspareparts724.dk) - [denmark@lfspareparts.dk](mailto:denmark@lfspareparts.dk)
- LF SpA Cesena (IT) Swiss Branch Steinhausen SWITZERLAND**  
Sennweidstrasse, 45 - CH-6312 Steinhausen  
Tel. +41 (0)41 760 15 80/1 - Fax +41 (0)41 760 15 85  
[www.lfersatzteile724.ch](http://www.lfersatzteile724.ch) - [info@lfersatzteile.ch](mailto:info@lfersatzteile.ch)
- LF Spare Parts Ltd. UNITED KINGDOM**  
A10a Lakeside Business Park, Broadway Lane  
South Cerney, Gloucestershire GL7 5XL  
Tel. +44 (0)1285 86 16 25 - Fax +44 (0)1285 86 39 49  
[www.lfspareparts724.co.uk](http://www.lfspareparts724.co.uk) - [info@lfspareparts.co.uk](mailto:info@lfspareparts.co.uk)
- LF Central Est Europe S.r.o. CZECH REPUBLIC**  
Antala Staska 1859/34  
14000 Praha 4 - KRC  
Tel. +420 730 156 910  
[www.lfspareparts724.cz](http://www.lfspareparts724.cz) - [info@lfspareparts.cz](mailto:info@lfspareparts.cz)
- LF SPARE PARTS INC. USA**  
Legal address:  
155 Office Plaza Dr - Suite A - Tallahassee, FL 32301  
Business/Mailing address:  
1100 South Tower, 225 Peachtree St., N.E. - Atlanta, GA 30303, USA  
Tel. +1-404-525-2600 - Fax +1-404-586-3528  
[www.lfspareparts724.us](http://www.lfspareparts724.us) - [info@lfspareparts.us](mailto:info@lfspareparts.us)  
Tel. West Coast and Midwest: 206-349-1525 Sauro  
Tel. East Coast and the Caribbean: 786-817-1764 Luis
- 
- AUSTRALIA AND NEW ZEALAND**  
[www.lfspareparts724.com](http://www.lfspareparts724.com)  
[andrea.calvio@lfspareparts.com](mailto:andrea.calvio@lfspareparts.com)
- AUSTRIA**  
[www.lfersatzteile724.at](http://www.lfersatzteile724.at)  
[info@lfersatzteile.at](mailto:info@lfersatzteile.at)
- BALKAN COUNTRIES**  
[www.lfspareparts724.com](http://www.lfspareparts724.com)  
[matija.ramov@lfspareparts.com](mailto:matija.ramov@lfspareparts.com)
- BALTIC COUNTRIES**  
[www.lfspareparts724.com](http://www.lfspareparts724.com)  
[inara.silina@lfspareparts.com](mailto:inara.silina@lfspareparts.com)
- LATIN AMERICA AND THE CARRIBEANS**  
[www.lfrepuestos-horeca724.es](http://www.lfrepuestos-horeca724.es)  
[export@lfrepuestos.es](mailto:export@lfrepuestos.es)
- POLAND**  
[www.lfspareparts724.pl](http://www.lfspareparts724.pl)  
[info@lfspareparts.pl](mailto:info@lfspareparts.pl)
- SOUTH KOREA**  
[www.lfspareparts724.com](http://www.lfspareparts724.com)  
[fabio.doni@lfspareparts.com](mailto:fabio.doni@lfspareparts.com)
- TURKEY**  
[www.lfyedekparca724.com](http://www.lfyedekparca724.com)  
[export@lfspareparts.com](mailto:export@lfspareparts.com)