



Spare parts for the professional sector: Food processing equipment



Suitable for:

OEM



This catalogue is automatically generated.
Therefore, the sequence of the items might
not be always shown at best.
Updates will be issued in case of additions
and/or amendments.

Suitable universal spare parts may not be included





Suitable for:

OEM



Suitable for:

Baffles

5025692 PRODUCT FUNNEL 210x125 mm
mounting holes 60 mm



OEM AH051

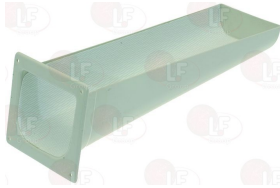
OEM AH052

5035258 PRODUCT FUNNEL 210x125 mm
distance between mounting holes 60 mm



OEM AH052

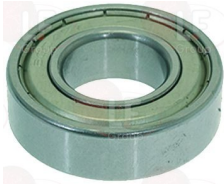
5034413 PRODUCT FUNNEL 400x120 mm
flange 133x162 mm mm - dist.bw.holes 110x140 mm



OEM AH060

Bearings

9063009 BEARING 6004 ZZ NSK
external \varnothing 42 mm - intern. \varnothing 20 mm - thickness 12



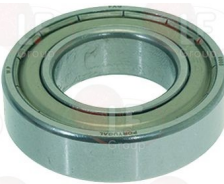
OEM AB047

9063007 BEARING 6005 DDU NSK
external \varnothing 47mm - internal \varnothing 25mm - thickness 12mm
for OEM KNEADER F201/1-VE201/2
for FIMAR KNEADER IM25-IM38
for FIMAR PLANETARY IP10-IP20
for SIRMAN BONE BAND SAW SO3100



OEM AB114

9063008 BEARING 6005 ZZ NSK
external \varnothing 47mm - intern. \varnothing 25mm - thickness 12mm
for OEM KNEADER F201/1-VE201/2
for AGUSTONI PLANETARIA P302-P302SM-P402-P402SM



OEM AB109

5009467 BEARING 6007 DDUCM NSK
external \varnothing 62 mm - internal \varnothing 35 mm - thickness 14



OEM AB089

3063051 BEARING 6200 NSK
external \varnothing 30mm - internal \varnothing 10mm - thickness 9mm



OEM AB119

1063906 BEARING 6203 ZZ NSK
external \varnothing 40mm - internal \varnothing 17mm - thickness 12mm



OEM AB079

1063901 BEARING 6204 DDU NSK
external \varnothing 47mm - internal \varnothing 20mm - thickness 14mm



OEM AB048

Suitable for:

D063052 BEARING 6204-2RS SKF
single box packaging



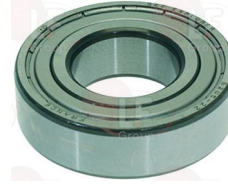
OEM AB049

9063005 BEARING 6205 DDU NSK
external \varnothing 52mm - internal \varnothing 25mm - thickness 15mm



OEM AB092

9063006 BEARING 6205 ZZ NSK
external \varnothing 52 mm-internal \varnothing 25 mm-thickness 15 mm



OEM AB072

3063073 SUPPORT FLANGE WITH BEARING UC206
flange UCF206 external dimensions 110x110 mm
for AGA DRYER E12-E18-E26-E35



OEM KD106

3063032 THRUST BEARING 51204
 \varnothing external 40 mm - \varnothing internal 20 mm - depth 14 mm



OEM AB121

Belts

9062002 TOOTHED BELT 300H 209 H25
for KNEADER F201/2-VE201/2



OEM AD118

5014844 TOOTHED V-BELT 13x1050 mm



OEM AD184

9062023 TRAPEZOIDAL BELTA-35 13x889 Li



OEM AD088



Suitable for:

OEM



Suitable for:

Bushings

5014938 MOTOR SHAFT BUSHING \varnothing 30x75 mm
for KNEADER F201-F201M/T-F202-F202T



OEM KE125

Casings

5014836 FRONT COVER 570x320x300 mm



OEM J4L04

5014833 SIDE COVER RIGHT 460x335 mm



OEM J4L05

5014834 SIDE COVER 460x335 mm LEFT



OEM J4L06

5014833 SIDE COVER RIGHT 460x335 mm



OEM J4L05

5014834 SIDE COVER 460x335 mm LEFT



OEM J4L06

Circlips

5015337 SEEGER RING E-20
of stainless steel for springs C60
 \varnothing internal 18.5 mm - thickness 1.2 mm
UNI 7435 - DIN 471



OEM MC033



Contactors

3446561 CONTACTOR LOVATO BF0910A
 coil 9A 230V 50/60Hz 4.2Kw
 3 normally open contacts
 1 normally open auxiliary contact



OEM EN005

OEM EN082

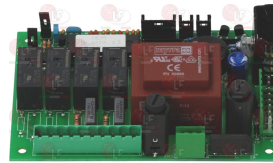
Electronic boards

5039382 CIRCUIT BOARD DISPLAY 100x40 mm



OEM J5H05

5039381 MOTHERBOARD 132x90 mm



OEM J5H06

Gears

9212017 BOSS-TO-BOSS GEAR
 internal \varnothing 26 mm



OEM KF075
 OEM 4203300

OEM KF076

OEM 4203200

5014939 GEAR TRANSMISSION SHAFT
 overall length 150 mm



OEM KE001

3453036 SPRING RING 48x2.2x1.45 mm - 2 PCS



OEM RC055

3241843 THICKNESS ADJUSTER 52x45 mm



OEM RC058

OEM R3K04

OEM R3K10

Heating elements

3755250 HEATING ELEMENT 1500W 230V
 UPPER-LOWER
 length 390 mm - width 234 mm



OEM EE028

3755251 HEATING ELEMENT 1500W 400V
 UPPER-LOWER
 length 390 mm - width 234 mm



OEM EE181



Suitable for:

OEM



Suitable for:

3755253 HEATING ELEMENT 3000W 400V
UPPER-LOWER
length 520 mm - width 345 mm



OEM EE162

Indicator lights

3221420 INDICATOR LIGHT ORANGE 400V
mounting hole 11x30 mm - 120°C



OEM EL035

Ironmongery (screws,nuts,washers)

3242451 CLASP \varnothing 3x16 mm
stainless steel C70 - UNI 6873 - DIN 1481-ISO 8752



OEM RC212

9528002 COUNTERSUNK FLAT HEAD SCREWS M 10x25
hexagon socket - stainless steel
UNI 5933 - DIN 7991 - ISO 10642



OEM MB220

1528627 COUNTERSUNK FLAT HEAD SCREWS M8x20
hexagon socket - stainless steel
UNI 5933 - DIN 7991 - ISO 10642



OEM MB145

9742007 FEATHER KEY ST. STEEL C40 5x5x20 mm
UNI 6604/A - DIN 6685/A



OEM MD048

9742006 FEATHER KEY ST. STEEL C40 6x6x25 mm
UNI 6604/A - DIN 6685/A



OEM MD020

OEM MD061

9742005 FEATHER STEEL C40 8x7x30 mm
UNI 6604/A - DIN 6685/A



OEM MD041



OEM



Suitable for:

9528001 **HEXAGON HEAD SCREW M10x25**
stainless steel - UNI 5739 - DIN 933 - ISO 4017



OEM MB168

Suitable for:

3060069 **HEXAGONAL NUT M8 MEDIUM**
stainless steel - UNI 5588 - DIN 934 - ISO 4032



OEM MA007

OEM MA069

5017493 **SCREWS WITH HEXAGON SOCKET M8x12**
stainless steel - conical edge
UNI 5927 - DIN 914 - ISO 4027



OEM MD023

Knobs

3241652 **BLACK KNOB \varnothing 42 mm**
D-shaped hole 6x4.6 mm



OEM AC006

Microswitches, magnetic

3240416 **MAGNETIC MICROSWITCH \varnothing 10x33 mm**
0.04A 250V - contact NO
with cable length 1500 mm



OEM

3240852 **MAGNETIC MICROSWITCH \varnothing 12x52 mm**
200mA 240V - contact NO
with cable length 2000 mm



OEM EN068

Microswitches, mechanical

3803071 **MICROSWITCH BITRON 16A 250V**



OEM EG001

3240419 **MICROSWITCH PIZZATO MF09**
16A 250V



OEM EG031



Suitable for:

OEM



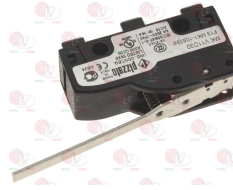
1240120 MICROSWITCH PIZZATO MKV11D15
16A 250V



OEM EG032

Suitable for:

9240007 MICROSWITCH PIZZATO MKV11D30
16A 250V



OEM EG036

Pizza dough stretchers rolls and spares

9733019 BOTTOM EXTERNAL ROLLER \varnothing 48x420 mm



OEM RC208

Position switches

3240850 LIMIT MICROSWITCH PIZZATO
model FA4111-2DN
3A 400V - with cable length 2000 mm



OEM EG040

3240851 LIMIT MICROSWITCH PIZZATO
model FA4631-2DN
3A 400V - with cable length 2000 mm

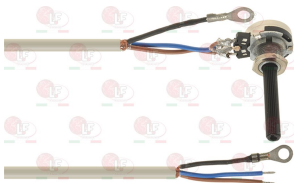


OEM EG041

OEM EG044

Potentiometers

3350100 COMPLETE POTENTIOMETER
with cable length 620 mm
pin \varnothing 6x35 mm



OEM EO218

OEM HE092

Probes

3445200 PROBE FOR THERMOCOUPLE TCJ
2 wires
probe length 250 mm - \varnothing probe 2 mm
cable length 2500 mm



OEM ED052

OEM ED066

OEM EO232

5066434 PROBE TEMPERATURE
probe length 40 mm - \varnothing probe 6 mm
cable length 2500 mm



OEM ED079



Relays

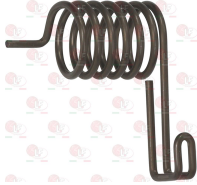
- 3351007 POWER RELAY FINDER 55.32.8.230.0040**
 230V 50/60Hz
 2 exchange contacts 10A
 with to test push-button + mechanic gauge



OEM EN016

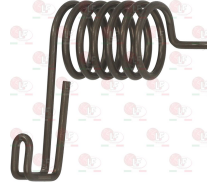
Springs

- 5010757 PROTECTION DEVICE SPRING LH**
 external \varnothing 30 mm
 internal \varnothing 25 mm
 height 70 mm - width 50 mm
 for PIZZAFORM PF45/MT-E



OEM KD019

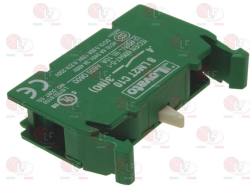
- 5010756 PROTECTION DEVICE SPRING RH**
 external \varnothing 30 mm
 internal \varnothing 25 mm
 height 70 mm - width 50 mm
 for PIZZAFORM PF45/MT-E



OEM KD018

Switches

- 3319354 CONTACT LOVATO 6A 240V**
 1 CONTACT NO



OEM EF063

- 3319300 FLUSH PUSH-BUTTON BLACK SIMB. T**
 MOELLER-EATON - mounting hole \varnothing 22 mm



OEM EF054

OEM EF100

- 9319008 FLUSH PUSH-BUTTON GREEN OPAQUE SIMB. II**
 MOELLER-EATON - mounting hole \varnothing 22 mm



OEM EF099

OEM EF0991

- 9319011 GREEN START FLUSH PUSH-BUTTON SYMBOL I**
 MOELLER-EATON - mounting hole \varnothing 22 mm



OEM EF083



Suitable for:

OEM



9319010 MUSHROOM PUSH-BUTTON RED
silk-screen printing "0"
mounting hole \varnothing 22 mm



OEM EF086

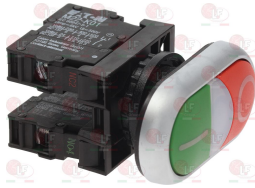
Suitable for:

3319465 ORANGE BIPOLAR SWITCH 10A 400V
with indicator light
silk-screen printing 0 - I
max temperature 120°C
mounting hole 22x30 mm



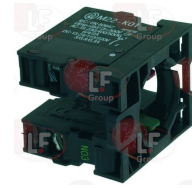
OEM EF004

9319009 PUSH-BUTTON PANEL O-I GREEN-RED 15A 500V
MOELLER-EATON - 1 normally closed contact
1 normally open contact
mounting hole \varnothing 22 mm



OEM EF097

3319301 START PUSH-BUTTON BLOCK
MOELLER-EATON - 1 normally closed contact
1 normally open contact



OEM EF040

OEM EF096

9319007 STOP PUSH-BUTTON BLOCK 15A 500V
1 NC contact MOELLER-EATON M22-K01



OEM EF095

Terminal blocks

3247016 TERMINAL BLOCK 3-POLES FV273 40A 450V
for cable max 6 mm²
operating temperature 150°C
nominal voltage 450 V



OEM EP106

OEM EP135



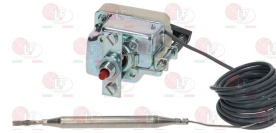
Thermostats

3444784 SINGLE-PHASE THERMOSTAT 100-175°C
 D-shaped pin \varnothing 6x4.6 mm
 covered capillary length 1470 mm - 16A 230V
 bulb \varnothing 6x130 mm



OEM ED048

3444590 SINGLE-PHASE THERMOSTAT 250°C
 with manual reset
 covered capillary length 1470 mm - 16A 250V
 bulb \varnothing 6x87 mm



OEM ED049

Timers

5014837 TIMER MBA 2F 110/230V 50/60Hz
 0.5 ÷ 10 seconds



OEM EC043

3446088 TIMER TN80 230V/400V 50/60Hz 11VA
 3 seconds - 60 minutes



OEM EC039

9446001 TIMER 30 MINUTES KIT
 complete with knob
 manually set mechanical timer
 30 minutes manually set cycle
 bipolar with contact capacity 16(4)A 250V
 max temperature 125°C
 D-shaped pin \varnothing 6x4.6 mm



OEM AC006

OEM EC028

OEM EC028+AC006

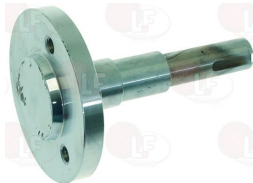
3241652 BLACK KNOB \varnothing 42 mm
 D-shaped hole 6x4.6 mm



OEM AC006

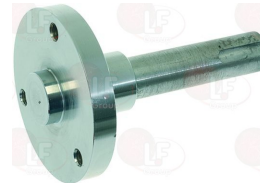
Tool holder shafts

9742003 TOOL SHAFT 141 mm



OEM KE100

9742004 TOOL SHAFT 150 mm



OEM KE086



Suitable for:

OEM



Suitable for:

Whisks, hooks and flat beaters

9740017 ALUMINIUM HOOK \varnothing 16 mm
overall height with coupling 210 mm



OEM AH035

1528627 COUNTERSUNK FLAT HEAD SCREWS M8x20
hexagon socket - stainless steel
UNI 5933 - DIN 7991 - ISO 10642



OEM MB145

9740018 ALUMINIUM HOOK \varnothing 23 mm
overall height with coupling 275 mm



OEM AH009

9528002 COUNTERSUNK FLAT HEAD SCREWS M10x25
hexagon socket - stainless steel
UNI 5933 - DIN 7991 - ISO 10642



OEM MB220

9740019 METAL HOOK \varnothing 28 mm
overall height with coupling 310 mm



OEM AH034

9528001 HEXAGON HEAD SCREW M10x25
stainless steel - UNI 5739 - DIN 933 - ISO 4017



OEM MB168

The data herewith contained may change without notice and LF SpA cannot be held responsible for possible errors stated or resulting by the use of this document. All rights reserved. No part of this publication may be reproduced without written permission by LF SpA.



Distributing Components, Spare Parts & Accessories in original quality worldwide

-
- LF SpA HEADQUARTERS**
via Voltri, 80 - 47522 Cesena (FC) ITALY
Tel. +39 0547 34 11 11 - Fax +39 0547 34 11 10
www.lfricambi724.it - info@lfricambi.it
Export Dept. Tel. +39 0547 34 11 50 - Fax +39 0547 34 11 55
www.lfspareparts724.com - export@lfspareparts.com
- LF SpA HOUSEHOLD COMPONENTS DIVISION**
Via Padriciano, 99 - AREA Science Park - 34149 Trieste (TS) ITALY
Tel. +39 0547 34 12 42 - Fax +39 0547 34 12 48
www.lfspareparts724.com - info@lfspareparts.com
- EPGC Sas FRANCE**
13, Rue des Forts - 59960 Neuville en Ferrain
Tel. +33 (0)3 20 25 06 21 - Fax +33 (0)3 20 25 34 12
www.epgc.com - epgc@epgc.com
- LF GmbH GERMANY**
Junkersstrasse, 3 - D-82178 Puchheim - München
Tel. +49 89 89 45 78 66 - Fax +49 89 89 45 78 88
www.lfersatzteile724.de - info@lfersatzteile.de
- LF China REPUBLIC OF CHINA**
Room 403, No.2, Huadu Mansion, Lane 422, Huanghua Rd.
Minhang Dist. - 201103 Shanghai
Tel. +86 (0)21 33 53 66 31 - Fax +86 (0)21 33 53 66 32
www.lfspareparts724.com - china@lfspareparts.com
- OOO LF RUSSIAN FEDERATION**
Ul. Anatoliya Zhivova, 8 - office 1 - 123100 Moscow
Tel./Fax +7 495 725 26 53
www.lfspareparts724.ru - info@lfspareparts.ru
- LF Repuestos Horeca S.L.U. SPAIN**
Poligono Industrial Carpetania - C/Miguel Faraday, 8 - 28906 Getafe
Tel. +34 91 477 91 00 - Fax +34 91 477 90 81
www.lfrepuestos-horeca724.es - info@lfrepuestos.es
- LF Scandinavia Aps - LF Spareparts S.p.A. DENMARK**
Nupark, 51 - 7500 Holstebro
Tel. +45 70 70 77 33
www.lfspareparts724.dk - denmark@lfspareparts.dk
- LF SpA Cesena (IT) Swiss Branch Steinhausen SWITZERLAND**
Sennweidstrasse, 45 - CH-6312 Steinhausen
Tel. +41 (0)41 760 15 80/1 - Fax +41 (0)41 760 15 85
www.lfersatzteile724.ch - info@lfersatzteile.ch
- LF Spare Parts Ltd. UNITED KINGDOM**
A10a Lakeside Business Park, Broadway Lane
South Cerney, Gloucestershire GL7 5XL
Tel. +44 (0)1285 86 16 25 - Fax +44 (0)1285 86 39 49
www.lfspareparts724.co.uk - info@lfspareparts.co.uk
- LF Central Est Europe S.r.o. CZECH REPUBLIC**
Antala Staska 1859/34
14000 Praha 4 - KRC
Tel. +420 730 156 910
www.lfspareparts724.cz - info@lfspareparts.cz
- LF SPARE PARTS INC. USA**
Legal address:
155 Office Plaza Dr - Suite A - Tallahassee, FL 32301
Business/Mailing address:
1100 South Tower, 225 Peachtree St., N.E. - Atlanta, GA 30303, USA
Tel. +1-404-525-2600 - Fax +1-404-586-3528
www.lfspareparts724.us - info@lfspareparts.us
Tel. West Coast and Midwest: 206-349-1525 Sauro
Tel. East Coast and the Caribbean: 786-817-1764 Luis
-
- AUSTRALIA AND NEW ZEALAND**
www.lfspareparts724.com
andrea.calvio@lfspareparts.com
- AUSTRIA**
www.lfersatzteile724.at
info@lfersatzteile.at
- BALKAN COUNTRIES**
www.lfspareparts724.com
matija.ramov@lfspareparts.com
- BALTIC COUNTRIES**
www.lfspareparts724.com
inara.silina@lfspareparts.com
- LATIN AMERICA AND THE CARRIBEANS**
www.lfrepuestos-horeca724.es
export@lfrepuestos.es
- POLAND**
www.lfspareparts724.pl
info@lfspareparts.pl
- SOUTH KOREA**
www.lfspareparts724.com
fabio.doni@lfspareparts.com
- TURKEY**
www.lfyedekparca724.com
export@lfspareparts.com