



Spare parts for the professional sector:  
**Food processing equipment**



Suitable for:

**ABO**



This catalogue is automatically generated.  
Therefore, the sequence of the items might  
not be always shown at best.  
Updates will be issued in case of additions  
and/or amendments.

*Suitable **universal spare parts** may not be included*





Suitable for:

**ABO**



Suitable for:

## Accident prevention devices-protections

**9716009 CARRIAGE PROTECTION OF POLYCARBONATE**  
max overall dimensions 250x310 mm  
for Slicer (ABO) 350



ABO

## Bearings

**D063031 BEARING 6004-2RS SKF**  
ø extern 42 mm - ø intern 20 mm - thickness 12 mm  
single box packaging



ABO LF-5026273

**9063036 BEARING 608 Z MOUNTED ON BUSHING**  
external nylon bushing  
external ø 28 mm - internal ø 8 mm -thickness 9 mm  
for Slicer (ABO)



ABO

**9004000 BEARING 608 ZZ NSK**  
external ø 22 mm - internal ø 8 mm -thickness 7 mm  
for Slicer (ABO)



ABO

**9063026 BEARING 638 Z MOUNTED ON BUSHING**  
external nylon bushing  
external ø 24 mm -internal ø 10 mm-thickness 10 mm  
for Slicer (ABO) 350



ABO

## Belts

**9003528 BELT DENTATA 8x315 mm Li**  
for Slicer (ABO) 300G



ABO

**9062090 BELT MULTIGRIP J 431 H28 11 GROOVES**  
for Slicer (ABO) 370



ABO

Suitable for:

**9003656 MULTIGRIP BELT TB2 310 H20 9 GROOVES**  
for Slicer (ABO) 300G



ABO

ABO LF-9003658

Suitable for:

**9062095 MULTIGRIP BELT TB2 330 H22 10 GROOVES**  
for Slicer (ABO) 300I



ABO

**9003664 MULTIGRIP BELT 400 TB2 H16 7 GROOVES**  
for Slicer (ABO) 300V



ABO

**9003516 TOOTHED BELT 6x425 mm**  
for Slicer (ABO) 350 - 370V



ABO

**9003544 V-BELT 10x355 mm Z14**  
for Slicer (ABO) 330G - 350G - 370G



ABO

**9003506 V-BELT 6x320 mm Y343**  
for Slicer (ABO)



ABO

**9003507 V-BELT 6x330 mm**  
model Y352  
for Slicer (ABO) 220 - 250 - 275 - 300G - 300V



ABO

**9003529 V-BELT 8x355 mm**  
model T14  
for Slicer (ABO) 300V



ABO

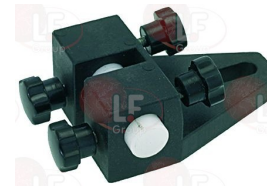
## Blade guides

**9016402 BLADE GUIDE ø 40 mm ABO**  
external ø 40 mm  
height 10 mm  
for Bone bandsaw (ABO)



ABO

**9016413 COMPLETE BLADE GUIDE ABO**  
for Bone bandsaw (ABO)



ABO



Suitable for:

**ABO**

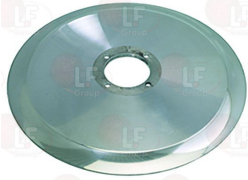
Suitable for:



## Blades for meat slicer

### 9006509 BLADE $\varnothing$ 220-25,4-4-180 MOD.C

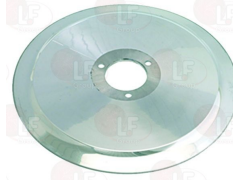
B = outer  $\varnothing$  220 mm  
D = central hole  $\varnothing$  25.4 mm  
C = blade inner  $\varnothing$  180 mm  
4x fastening screws  
100CR6 forged steel



ABO

### 9006515 BLADE $\varnothing$ 250-40-3-210 MOD.C

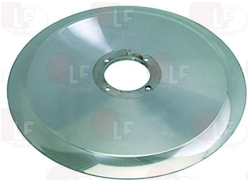
B = outer  $\varnothing$  250 mm  
D = central hole  $\varnothing$  40 mm  
C = blade inner  $\varnothing$  210 mm  
height 17.5 mm  
3x fastening screws  
C45 steel



ABO

### 9006520 BLADE $\varnothing$ 275-40-4-218 MOD.C

B = outer  $\varnothing$  275 mm  
D = central hole  $\varnothing$  40 mm  
C = blade inner  $\varnothing$  218 mm  
4x fastening screws  
100CR6 forged steel



ABO

### 9006528 BLADE $\varnothing$ 300-57-4-254 MOD.C

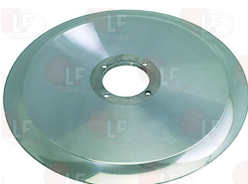
B = outer  $\varnothing$  300 mm  
D = central hole  $\varnothing$  57 mm  
C = blade inner  $\varnothing$  254 mm  
4x fastening screws  
100CR6 forged steel



ABO

### 9006538 BLADE $\varnothing$ 350-57-4-280 MOD.C

B = outer  $\varnothing$  350 mm  
D = central hole  $\varnothing$  57 mm  
C = blade inner  $\varnothing$  280 mm  
4x fastening screws  
100CR6 forged steel



ABO

### 9006559 BLADE 300-57-4-254 MOD.C W/EXTRACT.HOLES

B = outer  $\varnothing$  300 mm  
D = central hole  $\varnothing$  57 mm  
C = blade inner  $\varnothing$  254 mm  
4x fastening screws  
with extraction holes  
100CR6 forged steel



ABO

### 9006560 BLADE 330-57-4-270 MOD.C W/EXTRACT.HOLES

B = outer  $\varnothing$  330 mm  
D = central hole  $\varnothing$  57 mm  
C = blade inner  $\varnothing$  270 mm  
4x fastening screws  
with extraction holes  
100CR6 forged steel



ABO

### 9006539 BLADE 350-57-4-280 MOD.C W/EXTRACT.HOLES

B = outer  $\varnothing$  350 mm  
D = central hole  $\varnothing$  57 mm  
C = blade inner  $\varnothing$  280 mm  
4x fastening screws  
with extraction holes  
100CR6 forged steel



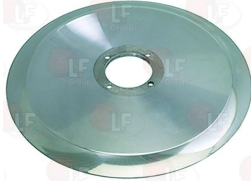
ABO

Suitable for:

Suitable for:

## 9006535 ST. STEEL BLADE $\varnothing$ 330-57-4-270 MOD.C

B = external  $\varnothing$  330 mm  
 D = central hole  $\varnothing$  57 mm  
 C = blade internal  $\varnothing$  270 mm  
 4 fastening screws  
 100CR6 forged stainless steel



ABO

## Bushings

### 9002551 GLACIER BUSH $\varnothing$ 14-12x15 mm

external  $\varnothing$  14 mm  
 internal  $\varnothing$  12 mm  
 height 15 mm



ABO

### 9002552 GLACIER BUSH $\varnothing$ 18-16x10 mm

external  $\varnothing$  18 mm  
 internal  $\varnothing$  16 mm  
 height 10 mm



ABO

### 9002500 GLACIER BUSH $\varnothing$ 25-22x25 mm

external  $\varnothing$  25 mm  
 internal  $\varnothing$  22 mm  
 height 25 mm

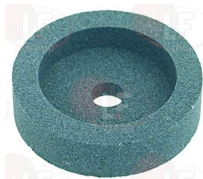


ABO

## Emeries for blades

### 9013000 CUP GRINDERS 40-7-10

A = external  $\varnothing$  40 mm  
 B = hole  $\varnothing$  7 mm  
 H = height 10 mm  
 FINE GRAIN



ABO

### 9013013 CUP GRINDERS 48-14.3-15

A = external  $\varnothing$  48 mm  
 B = hole  $\varnothing$  14.3 mm  
 H = height 15 mm  
 COARSE GRAIN  
 for Slicer (ABO) MIA300



ABO



Suitable for:

## ABO



### 9013132 RIMMED GRINDERS 50-7-8

A = external  $\varnothing$  50 mm  
B = hole  $\varnothing$  7 mm  
H = height 8 mm  
COARSE GRAIN



ABO

Suitable for:

### 9013143 RIMMED GRINDERS 51-14.3-7

A = external  $\varnothing$  51 mm  
B = hole  $\varnothing$  14.3 mm  
H = height 7 mm  
FINE GRAIN  
for Slicer (ABO) MIA300



ABO

## Gear Protectors

### 9010003 COMPLETE GEAR PROTECTION OMAS



ABO

## Gears

### 9005520 COMPLETE 31-TOOTH GEAR IN NYLON

external  $\varnothing$  63 mm  
internal  $\varnothing$  38 mm  
height 20 mm  
with 6 couplings  
gear protection  $\varnothing$  8/10 mm



ABO

## Handles

### 9014157 PLATE-PUSHING HANDLE 125 mm

distance between mounting holes 26 mm  
thread  $\varnothing$  5 mm  
for Slicer (ABO)



ABO



**Knobs**

**9007462 ADJUSTABLE KNOB BLACK  $\varnothing$  18x163 mm**

pin  $\varnothing$  18x103 mm  
 knob  $\varnothing$  67 mm  
 mounting frame  $\varnothing$  68 mm



ABO

**Pins**

**9015001 PIN FOR MEAT MINCER 22 ABO**

shaft  $\varnothing$  11 mm  
 square part 12.6x12.6 mm  
 thread  $\varnothing$  14x20 mm  
 flange  $\varnothing$  20 mm



ABO

**9015002 PIN FOR MEAT MINCER 32 ABO**

shaft  $\varnothing$  13 mm  
 square part 14.2x14.2 mm  
 thread  $\varnothing$  21.8x22 mm  
 flange  $\varnothing$  26 mm



ABO

**9011004 PIN FOR SLICER BLADE COVER**

hexagonal part side 19 mm - hole  $\varnothing$  7 mm  
 fastening thread M12 - overall height 63 mm  
 cylindrical part  $\varnothing$  12x45 mm  
 for Slicer (ABO) 330

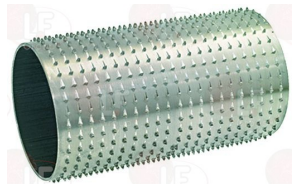


ABO

**Rolls for graters and spares**

**9016501 GRATING ROLL ABO**

external  $\varnothing$  83 mm - internal  $\varnothing$  79 mm  
 roller length 150 mm



ABO



Suitable for:

**ABO**



Suitable for:

## Scrapers and accessories

**9016066 SCRAPER FOR BAND SAW BLADE**  
for Bone bandsaw (ABO)



ABO

**9016070 SCRAPER FOR BAND SAW BLADE**  
for Bone bandsaw (ABO)



ABO

## Sharpeners

**9000004 BLADE SHARPENER ABO**  
with cover  
mounting distance 46 mm



ABO

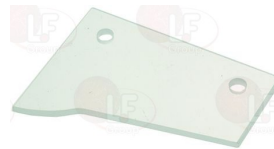
## Slice protectors

**9009505 SLICE GUARD FOR SLICER BIG/SMALL**  
external dimensions large 110x73 mm  
distance between holes large 83 mm  
external dimensions small 90x63 mm  
small distance between holes 63 mm  
for Slicer (ABO)



ABO

**9711010 SLICE GUARD FOR SLICER OF PLEXIGLASS**  
external dimensions 90x64 mm  
distance between holes 63 mm  
for Slicer (ABO)



ABO

**9711011 SLICE GUARD FOR SLICER OF PLEXIGLASS**  
external dimensions 110x73 mm  
distance between holes 84 mm  
for ABO SLICER 250



ABO





Suitable for:

**ABO**



Suitable for:

**Tie rods for blade cover**

**9013531 BLADE COVER TIE ROD SHAFT 146mm PITCH M6**



ABO LF-9714009

**9714024 BLADE COVER TIE ROD SHAFT 187mm PITCH M7  
for Slicer (ABO) 350**



ABO

**9013500 BLADE COVER TIE ROD SHAFT 183mm PITCH M7  
for Slicer (ABO)**



ABO

**9013501 BLADE COVER TIE ROD SHAFT 257mm PITCH M7  
for Slicer (ABO)**



ABO

The data herewith contained may change without notice and LF SpA cannot be held responsible for possible errors stated or resulting by the use of this document. All rights reserved. No part of this publication may be reproduced without written permission by LF SpA.



## Distributing Components, Spare Parts & Accessories in original quality worldwide

- 
- LF SpA HEADQUARTERS**  
via Voltri, 80 - 47522 Cesena (FC) ITALY  
Tel. +39 0547 34 11 11 - Fax +39 0547 34 11 10  
[www.lfricambi724.it](http://www.lfricambi724.it) - [info@lfricambi.it](mailto:info@lfricambi.it)  
Export Dept. Tel. +39 0547 34 11 50 - Fax +39 0547 34 11 55  
[www.lfspareparts724.com](http://www.lfspareparts724.com) - [export@lfspareparts.com](mailto:export@lfspareparts.com)
- LF SpA HOUSEHOLD COMPONENTS DIVISION**  
Via Padriciano, 99 - AREA Science Park - 34149 Trieste (TS) ITALY  
Tel. +39 0547 34 12 42 - Fax +39 0547 34 12 48  
[www.lfspareparts724.com](http://www.lfspareparts724.com) - [info@lfspareparts.com](mailto:info@lfspareparts.com)
- EPGC Sas FRANCE**  
13, Rue des Forts - 59960 Neuville en Ferrain  
Tel. +33 (0)3 20 25 06 21 - Fax +33 (0)3 20 25 34 12  
[www.epgc.com](http://www.epgc.com) - [epgc@epgc.com](mailto:epgc@epgc.com)
- LF GmbH GERMANY**  
Junkersstrasse, 3 - D-82178 Puchheim - München  
Tel. +49 89 89 45 78 66 - Fax +49 89 89 45 78 88  
[www.lfersatzteile724.de](http://www.lfersatzteile724.de) - [info@lfersatzteile.de](mailto:info@lfersatzteile.de)
- LF China REPUBLIC OF CHINA**  
Room 403, No.2, Huadu Mansion, Lane 422, Huanghua Rd.  
Minhang Dist. - 201103 Shanghai  
Tel. +86 (0)21 33 53 66 31 - Fax +86 (0)21 33 53 66 32  
[www.lfspareparts724.com](http://www.lfspareparts724.com) - [china@lfspareparts.com](mailto:china@lfspareparts.com)
- OOO LF RUSSIAN FEDERATION**  
Ul. Anatoliya Zhivova, 8 - office 1 - 123100 Moscow  
Tel./Fax +7 495 725 26 53  
[www.lfspareparts724.ru](http://www.lfspareparts724.ru) - [info@lfspareparts.ru](mailto:info@lfspareparts.ru)
- LF Repuestos Horeca S.L.U. SPAIN**  
Poligono Industrial Carpetania - C/Miguel Faraday, 8 - 28906 Getafe  
Tel. +34 91 477 91 00 - Fax +34 91 477 90 81  
[www.lfrepuestos-horeca724.es](http://www.lfrepuestos-horeca724.es) - [info@lfrepuestos.es](mailto:info@lfrepuestos.es)
- LF Scandinavia Aps - LF Spareparts S.p.A. DENMARK**  
Nupark, 51 - 7500 Holstebro  
Tel. +45 70 70 77 33  
[www.lfspareparts724.dk](http://www.lfspareparts724.dk) - [denmark@lfspareparts.dk](mailto:denmark@lfspareparts.dk)
- LF SpA Cesena (IT) Swiss Branch Steinhausen SWITZERLAND**  
Sennweidstrasse, 45 - CH-6312 Steinhausen  
Tel. +41 (0)41 760 15 80/1 - Fax +41 (0)41 760 15 85  
[www.lfersatzteile724.ch](http://www.lfersatzteile724.ch) - [info@lfersatzteile.ch](mailto:info@lfersatzteile.ch)
- LF Spare Parts Ltd. UNITED KINGDOM**  
A10a Lakeside Business Park, Broadway Lane  
South Cerney, Gloucestershire GL7 5XL  
Tel. +44 (0)1285 86 16 25 - Fax +44 (0)1285 86 39 49  
[www.lfspareparts724.co.uk](http://www.lfspareparts724.co.uk) - [info@lfspareparts.co.uk](mailto:info@lfspareparts.co.uk)
- LF Central Est Europe S.r.o. CZECH REPUBLIC**  
Antala Staska 1859/34  
14000 Praha 4 - KRC  
Tel. +420 730 156 910  
[www.lfspareparts724.cz](http://www.lfspareparts724.cz) - [info@lfspareparts.cz](mailto:info@lfspareparts.cz)
- LF SPARE PARTS INC. USA**  
Legal address:  
155 Office Plaza Dr - Suite A - Tallahassee, FL 32301  
Business/Mailing address:  
1100 South Tower, 225 Peachtree St., N.E. - Atlanta, GA 30303, USA  
Tel. +1-404-525-2600 - Fax +1-404-586-3528  
[www.lfspareparts724.us](http://www.lfspareparts724.us) - [info@lfspareparts.us](mailto:info@lfspareparts.us)  
Tel. West Coast and Midwest: 206-349-1525 Sauro  
Tel. East Coast and the Caribbean: 786-817-1764 Luis
- 
- AUSTRALIA AND NEW ZEALAND**  
[www.lfspareparts724.com](http://www.lfspareparts724.com)  
[andrea.calvio@lfspareparts.com](mailto:andrea.calvio@lfspareparts.com)
- AUSTRIA**  
[www.lfersatzteile724.at](http://www.lfersatzteile724.at)  
[info@lfersatzteile.at](mailto:info@lfersatzteile.at)
- BALKAN COUNTRIES**  
[www.lfspareparts724.com](http://www.lfspareparts724.com)  
[matija.ramov@lfspareparts.com](mailto:matija.ramov@lfspareparts.com)
- BALTIC COUNTRIES**  
[www.lfspareparts724.com](http://www.lfspareparts724.com)  
[inara.silina@lfspareparts.com](mailto:inara.silina@lfspareparts.com)
- LATIN AMERICA AND THE CARRIBEANS**  
[www.lfrepuestos-horeca724.es](http://www.lfrepuestos-horeca724.es)  
[export@lfrepuestos.es](mailto:export@lfrepuestos.es)
- POLAND**  
[www.lfspareparts724.pl](http://www.lfspareparts724.pl)  
[info@lfspareparts.pl](mailto:info@lfspareparts.pl)
- SOUTH KOREA**  
[www.lfspareparts724.com](http://www.lfspareparts724.com)  
[fabio.doni@lfspareparts.com](mailto:fabio.doni@lfspareparts.com)
- TURKEY**  
[www.lfyedekparca724.com](http://www.lfyedekparca724.com)  
[export@lfspareparts.com](mailto:export@lfspareparts.com)