



Spare parts for the professional sector: Cooking equipment



Suitable for:

VEMA



This catalogue is automatically generated.
Therefore, the sequence of the items might
not be always shown at best.
Updates will be issued in case of additions
and/or amendments.

Suitable universal spare parts may not be included





Suitable for:

VEMA



Suitable for:

Electrical capacitors

3068016 CAPACITOR DUCATI ENERGIA 10 μ F
 450V 50/60Hz
 operating temperature -25 +85°C
 lead connector 6.35x0.8 mm
 \varnothing 36xh58 mm



VEMA XRGR11

3068010 CAPACITOR DUCATI ENERGIA 6,3 μ F
 450V 50/60Hz
 operating temperature -25 +85°C
 lead connection 6.35x0.8 mm
 \varnothing 32xh55 mm



VEMA XRSP58

3068080 CAPACITOR ELECTRICAL 10 μ F
 450V 50/60Hz - \varnothing 30xh71 mm



VEMA XRGR11

3068097 CAPACITOR ELECTRICAL 6.3 μ F
 450V 50/60Hz - \varnothing 30xh51 mm



VEMA XRSP58

Heating elements

3355346 HEATING ELEMENT 480W 115V
 with movable coupling
 length 445 mm - connections \varnothing 1/4"
 for Toaster electric (VEMA) FO2069



VEMA XRF04

3355823 HEATING ELEMENT 550W 230V LEFT-HAND
 length 150 mm - width 145 mm
 complete with cables
 for a correct service we recommend
 to replace the right one 3355822 too



VEMA XRTP2

3355822 HEATING ELEMENT 550W 230V RIGHT-HAND
 length 150 mm - width 145 mm
 complete with cables
 for a correct service we recommend
 to replace the right one 3355823 too



VEMA XRTP2



Indicator lights

- 1221007 INDICATOR LIGHT RED 230V**
ø head 20 mm - ø hole 10 mm
wire connection length 200 mm



VEMA XRTR11

Ironmongery (screws,nuts,washers)

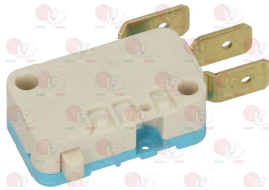
- 1528030 MID HEXAGONAL NUT M6**
stainless steel - UNI 5588 - DIN 934 - ISO 4032



VEMA XRFR42

Microswitches, mechanical

- 3240123 MICROSWITCH ROLD VRSRB1DA1**
16A 250V



VEMA XRSP70

Pliers for sandwiches and toasts

- 3317051 GRILL PLIER**
length 100 mm
height 180 mm



VEMA XRF03

Refractory tiles

- 5020739 GLASS-CERAMIC PLATE 530x250 mm**



VEMA XRPV7



Suitable for:

VEMA



Suitable for:

Springs

3250012 SPRING \varnothing 19x42 mm
for ELECTRIC GRIDDLE PV



VEMA XRPV13

Switches

3319137 BIPOLAR SWITCH AND LAMP 16A 250V
16(4)A 250V - max temperature 120°C
with red indicator light
mounting hole 28x53 mm



VEMA XRPV1

3319920 BIPOLAR SWITCH BLACK 16A 250V



3221097 INDICATOR LIGHT NEUTRAL 220V
head \varnothing 8 mm - 120°C



3221192 LAMP SUPPORT



3319016 BIPOLAR SWITCH RED 16A 250V
16(4)A 250V - max. temperature 120°C
with indicator light - silk screen printing 0 - I
mounting hole 22x30 mm



VEMA XRSP15

3319780 BLOCK CONNECTION WHITE 22x30 mm



3319779 BLOCK CONNECTIONS BLACK 22x30 mm



3319782 FRAME SAFETY 2 SIDES BLACK 22x30 mm





Suitable for:

3319783 FRAME SAFETY 4 SIDES BLACK 22x30 mm



VEMA



Suitable for:

3319501 PUSH-BUTTON PROTECTION CAP
external dimensions 29x36 mm
for switches with mounting hole 22x30 mm



3319139 RED THREE-POLE SWITCH 16A 250V
16(4)A 250V
with indicator light and button protection cap
max temperature 120°C
mounting hole 11x30 mm
for Toaster electric (VEMA) FO2069



3319780 BLOCK CONNECTION WHITE 22x30 mm



VEMA XRF01

3319779 BLOCK CONNECTIONS BLACK 22x30 mm



3319781 CONNECTION BLOCK BLACK 11x30 mm



3186636 GASKET FOR SWITCH
inner size 22x32 mm
internal size 22x32 mm



1319936 PROTECTIVE SWITCH COVER
external dimensions 36x18 mm
for switch with mounting hole 11x30 mm



Thermostats

3444008 KNOB BLACK \varnothing 41 mm 0-90°C
D-shaped hole 6x4.6 mm
for thermostat IMIT



VEMA XRPV16

3444007 THERMOSTAT SINGLE-PHASE TR2 0-300°C
D-shaped pin \varnothing 6x4.6 mm
capillary length 1500 mm - 15A 250V
bulb \varnothing 3.5x190 mm



VEMA XRPV3



Suitable for:

VEMA



Suitable for:

5022922 THERMOSTAT SINGLE-PHASE TR2 0-90°C
with handle and ring
D-shaped pin \varnothing 6x4.6 mm
covered capillary length 1500 mm - 16A 250V
bulb \varnothing 6.5x95 mm



VEMA XRCU20

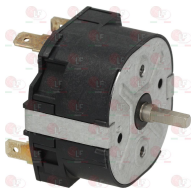
Timers

9721006 TIMER KIT 5 MINUTES G5
complete with knob
mechanical movement with balance wheel
manually set mechanical timer
5 minutes manually set cycle
contact capacity 16(3)A 250V
max temperature 125°C
square pin 3x3 mm



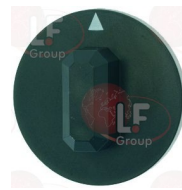
VEMA X RTP3

3446138 TIMER 15 MINUTES M2
mechanical movement with balance wheel
manually set mechanical timer
manually set cycle 15 minutes
2 poles with contact capacity 16(4)A 250V
max temperature 125°C
square pin 3x3 mm



VEMA XRF05

3241380 BLACK KNOB \varnothing 44 mm
squared hole 3.5x3.5 mm



The data herewith contained may change without notice and LF SpA cannot be held responsible for possible errors stated or resulting by the use of this document. All rights reserved. No part of this publication may be reproduced without written permission by LF SpA.



Distributing Components, Spare Parts & Accessories in original quality worldwide

-
- LF SpA HEADQUARTERS**
via Voltri, 80 - 47522 Cesena (FC) ITALY
Tel. +39 0547 34 11 11 - Fax +39 0547 34 11 10
www.lfircambi724.it - info@lfircambi.it
Export Dept. Tel. +39 0547 34 11 50 - Fax +39 0547 34 11 55
www.lfspareparts724.com - export@lfspareparts.com
- LF SpA HOUSEHOLD COMPONENTS DIVISION**
Via Padriciano, 99 - AREA Science Park - 34149 Trieste (TS) ITALY
Tel. +39 0547 34 12 42 - Fax +39 0547 34 12 48
www.lfspareparts724.com - info@lfspareparts.com
- EPGC Sas FRANCE**
13, Rue des Forts - 59960 Neuville en Ferrain
Tel. +33 (0)3 20 25 06 21 - Fax +33 (0)3 20 25 34 12
www.epgc.com - epgc@epgc.com
- LF GmbH GERMANY**
Junkersstrasse, 3 - D-82178 Puchheim - München
Tel. +49 89 89 45 78 66 - Fax +49 89 89 45 78 88
www.lfersatzteile724.de - info@lfersatzteile.de
- LF China REPUBLIC OF CHINA**
Room 403, No.2, Huadu Mansion, Lane 422, Huanghua Rd.
Minhang Dist. - 201103 Shanghai
Tel. +86 (0)21 33 53 66 31 - Fax +86 (0)21 33 53 66 32
www.lfspareparts724.com - china@lfspareparts.com
- OOO LF RUSSIAN FEDERATION**
Ul. Anatoliya Zhivova, 8 - office 1 - 123100 Moscow
Tel./Fax +7 495 725 26 53
www.lfspareparts724.ru - info@lfspareparts.ru
- LF Repuestos Horeca S.L.U. SPAIN**
Poligono Industrial Carpetania - C/Miguel Faraday, 8 - 28906 Getafe
Tel. +34 91 477 91 00 - Fax +34 91 477 90 81
www.lfrepuestos-horeca724.es - info@lfrepuestos.es
- LF Scandinavia Aps - LF Spareparts S.p.A. DENMARK**
Nupark, 51 - 7500 Holstebro
Tel. +45 70 70 77 33
www.lfspareparts724.dk - denmark@lfspareparts.dk
- LF SpA Cesena (IT) Swiss Branch Steinhausen SWITZERLAND**
Sennweidstrasse, 45 - CH-6312 Steinhausen
Tel. +41 (0)41 760 15 80/1 - Fax +41 (0)41 760 15 85
www.lfersatzteile724.ch - info@lfersatzteile.ch
- LF Spare Parts Ltd. UNITED KINGDOM**
A10a Lakeside Business Park, Broadway Lane
South Cerney, Gloucestershire GL7 5XL
Tel. +44 (0)1285 86 16 25 - Fax +44 (0)1285 86 39 49
www.lfspareparts724.co.uk - info@lfspareparts.co.uk
- LF Central Est Europe S.r.o. CZECH REPUBLIC**
Antala Staska 1859/34
14000 Praha 4 - KRC
Tel. +420 730 156 910
www.lfspareparts724.cz - info@lfspareparts.cz
- LF SPARE PARTS INC. USA**
Legal address:
155 Office Plaza Dr - Suite A - Tallahassee, FL 32301
Business/Mailing address:
1100 South Tower, 225 Peachtree St., N.E. - Atlanta, GA 30303, USA
Tel. +1-404-525-2600 - Fax +1-404-586-3528
www.lfspareparts724.us - info@lfspareparts.us
Tel. West Coast and Midwest: 206-349-1525 Sauro
Tel. East Coast and the Caribbean: 786-817-1764 Luis
-
- AUSTRALIA AND NEW ZEALAND**
www.lfspareparts724.com
andrea.calvio@lfspareparts.com
- AUSTRIA**
www.lfersatzteile724.at
info@lfersatzteile.at
- BALKAN COUNTRIES**
www.lfspareparts724.com
matija.ramov@lfspareparts.com
- BALTIC COUNTRIES**
www.lfspareparts724.com
inara.silina@lfspareparts.com
- LATIN AMERICA AND THE CARRIBEANS**
www.lfrepuestos-horeca724.es
export@lfrepuestos.es
- POLAND**
www.lfspareparts724.pl
info@lfspareparts.pl
- SOUTH KOREA**
www.lfspareparts724.com
fabio.doni@lfspareparts.com
- TURKEY**
www.lfyedekparca724.com
export@lfspareparts.com