



Spare parts for the professional sector: Cooking equipment



Suitable for:

SMEG



This catalogue is automatically generated.
Therefore, the sequence of the items might
not be always shown at best.
Updates will be issued in case of additions
and/or amendments.

Suitable universal spare parts may not be included





Suitable for:

SMEG



Suitable for:

Burners, flame spreaders and accessories

3025330 FLAME SPREADER ø 100 mm 3KW

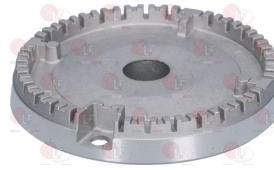


SMEG 201050744

3025338 VENTURI F/FLAME SPREADER 100 mm 3KW



3025321 FAST BURNER ø 90 mm 3Kw



**3025397 FLAME SPREADER EXT. SMEG IND. C00064921
ø 131/85 mm. matt black**



SMEG 201050693

3025405 BURNER ø 130 mm



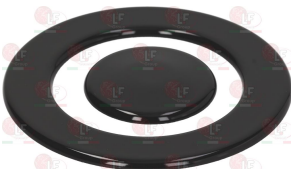
3025328 BURNER ø 130 mm 3.6KW



3025398 FLAME SPREADER ø 60 mm UNPOLISHED



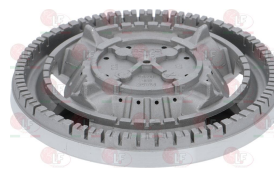
**D025254 FLAME SPREADER KIT ø 60/130 mm ARISTON
burner ring C00053174, central C00053175**



SMEG 201050746

SMEG 201050747

3025328 BURNER ø 130 mm 3.6KW



**D025038 BURNER ARISTON TRIPLA RING
small fitting for cooking hobs**



**D025084 BURNER TRIPLE BURNER RING NARDI
ø 147 mm - with 2 holes**





Suitable for:

D025085 BURNER TRIPLE BURNER RING NARDI
with 2 holes



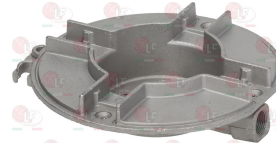
SMEG 878010088

SMEG



Suitable for:

D391023 SUPPORT BURNER ARISTON



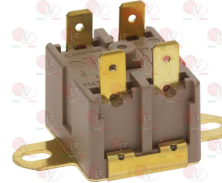
Contact thermostats

3444453 CONTACT THERMOSTAT 130°C 10A 250V
with automatic reset



SMEG 818731097

3444456 CONTACT THERMOSTAT 150°C 16A 250V
with manual reset



SMEG 818730541

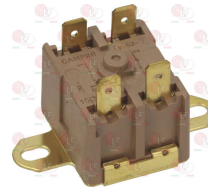
5047040 CONTACT THERMOSTAT 160°C 16A 250V M5
with automatic reset
for Pot stove gas (SMEG)



SMEG 818730332

SMEG 818731042

7108639 CONTACT THERMOSTAT 180°C 16A 250V
with automatic reset
for Pot stove gas (SMEG)



SMEG 818730640

5051708 CONTACT THERMOSTAT 210°C
with manual reset - 16A 250V
for Oven under cooktop electric (SMEG)



SMEG 818731311

Contactors

3446566 CONTACTOR LOVATO BF09T4A
coil 9A 230V 50/60Hz 16Kw
4 normally open contacts
no auxiliary contact



SMEG 816850372

3446227 AUXILIARY CONTACT LOVATO G218
10A
1 contact NO
1 contact NC





Suitable for:

SMEG



Suitable for:

5036738 CONTACTOR LOVATO BGF09T2A
 9A 400V 4Kw - coil 230V 50/60Hz
 2 normally open contacts
 2 normally closed contacts



SMEG 816850187

SMEG 816850208

Detergents

3092233 ALL-PURPOSE S/STEEL CLEANER SPLEND 500ml
 sanitizing cleaner for stainless steel surfaces
 removes dirt from hoods,
 cooking hobs, cooking ranges, dishwasher. and refrig.
 for use directions see the label on the
 packaging - complete with spray



SMEG INOX-SP

3092234 CLEAN+MULTIPURPOSE SANITIZER SMEG 500 ml
 specific to clean and sanitize
 the internal surfaces of refrigerators, eliminates
 odours, suitable for all surfaces
 that come into contact with food:
 slicers, cooking ranges, tables and flat work
 for operating instructions see the label
 on the bottle - complete with sprayer



SMEG CLEAN+

3092239 CLEANER FOR GREASE RESIDUES SMEG 500 ml
 specific to remove chars greases residues
 inside the ovens,
 on grids and on cooking tops
 for operating instructions see the label
 on the package - complete with sprayer



SMEG PULIFORNO

SMEG 901455

3092236 DETERGENT PASTE F.STAINLESS STEEL 400gr
 regenerating paste f. stainless steel, makes
 glossy the stainless steel surfaces
 suitable to remove the oxidations
 caused by daily use
 for operating instructions see the label
 on the package



SMEG PASTA-X

SMEG 902253

3092235 PULICERAM SANITIZER SMEG 500 ml
 suitable for glass-ceramic cooking hob
 for operating instructions see the label
 on the package - complete with sprayer



SMEG PULICERAM

3092232 SPECIAL PASTE FOR STAINLESS STEEL 250 ml
 to clean flame spreader,
 burners, pilot deflectors and st. steel grids
 for operating instructions see the label
 on the bottle



SMEG CREMA-X

Electrical capacitors

3068024 CAPACITOR DUCATI ENERGIA 16 μ F
 450V 50/60Hz
 operating temperature -25 +85°C
 lead connector 6.35x0.8 mm
 \varnothing 36xh70 mm



SMEG 811770034

3068008 CAPACITOR DUCATI ENERGIA 5 μ F
 450V 50/60Hz
 operating temperature -25 +85°C
 lead connection 6.35x0.8 mm
 \varnothing 28xh55 mm



SMEG 811770281

SMEG 811770394

3068083 CAPACITOR ELECTRICAL 16 μ F
 450V 50/60Hz - \varnothing 35xh71 mm



SMEG 811770034

3068096 CAPACITOR ELECTRICAL 5 μ F
 450V 50/60Hz - \varnothing 30xh51 mm

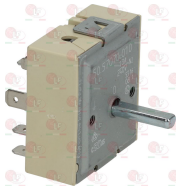


SMEG 811770281

SMEG 811770394

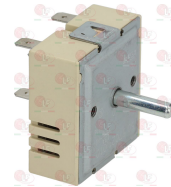
Energy regulators

3350024 ENERGY REGULATOR
 contact capacity 240V 13A
 max temperature 125°C
 D-shaped pin \varnothing 6x4.6 mm
 double rotation direction



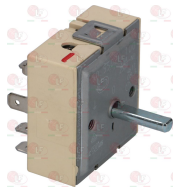
SMEG 818731068

3350026 ENERGY REGULATOR
 contact capacity 230V 13A - max temperature 125°C
 D-shaped pin \varnothing 6x4.6 mm
 double rotation direction
 for PYROCERAM. TOPS-SALAMANDERS-POTATO WARMERS



SMEG 816810066

3350035 ENERGY REGULATOR
 contact capacity 230V 13A
 max temperature 125°C
 D-shaped pin \varnothing 6x4.6 mm



SMEG 816810182



Suitable for:

SMEG



Suitable for:

Feet

5032841 FOOT MADE OF RUBBER ϕ 36 mm
with fixed screw M8x25 mm
overall height 36 mm



SMEG 690070808

SMEG 975770151

Fuses

3049043 QUICK ACTING FUSE ϕ 5x20 mm - 10 PCS
250V 500mA



SMEG 811913529

Heating elements

5057586 HEATING ELEMENT LOWER
700/1050W 230V - 760/1140W 240V
length 380 mm - width 515 mm
flange 100x22 mm
for Oven under cooktop electric (SMEG)



SMEG 806890212
SMEG 806890580

SMEG 806890235

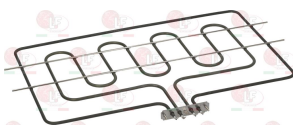
SMEG 806890319

5078401 HEATING ELEMENT LOWER 800W 220V
length 400 mm - width 435 mm
flange 70x22 mm



SMEG 806890233

7103327 HEATING ELEMENT UPPER
1050/2800W 230V - 1145/3050W 240V
length 365/325 mm - width 540 mm
flange 100x22 mm - cross piece 610mm
for Oven under cooktop electric (SMEG)



SMEG 806890213
SMEG 806890438

SMEG 806890236

SMEG 806890320



Hinges, catches and accessories

5062223 HINGE RH-LH FOR OVEN
 distance betw. holes 130mm - overall length 155mm
 height 150 mm



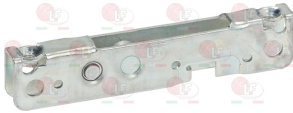
SMEG 931331044

5085170 HINGE RH-LH FOR OVEN
 distance betw. holes 195mm - overall length 210mm
 height 50 mm



SMEG 931330426

3053108 ROLL HOLDER FOR HINGE
 mounting distance 95 mm - overall length 110 mm
 height 23 mm



SMEG 935970006

Incandescent lamps and neon lamps

D221004 HALOGEN LAMP OSRAM G9 40W 230V SMEG
 OSRAM
 max. temperature 200°C



SMEG 824610747

3221041 LAMP E14 15W 230V
 max temperature 300°C - ø 22x50 mm



SMEG 824610072

SMEG 824610198

SMEG 824610204

SMEG 824610591

SMEG 824610690

3221061 LAMP E14 25W 230V
 max temperature 300°C - ø 26x57 mm



SMEG 824610176

Indicator lights

3221240 GREEN LAMP RECEPTACLE
 head ø 10 mm



SMEG 763870058

D221006 INDICATOR LAMP RED SMEG
 mounting hole ø 6 mm - head ø 7 mm



SMEG 763870117

SMEG 763870157

SMEG 763870160



Suitable for:

Suitable for:

3221132 INDICATOR LIGHT GREEN 230V
head \varnothing 13.5 mm - hole \varnothing 10 mm - 120°C
universal application



SMEG 824610596

3221238 INDICATOR LIGHT GREEN 250V



SMEG 824610124
SMEG 824610243

SMEG 824610125
SMEG 824610244

SMEG 824610234
SMEG 824610505

3221240 GREEN LAMP RECEPTACLE
head \varnothing 10 mm



SMEG 763870058

3221237 ORANGE LAMP RECEPTACLE
head \varnothing 10 mm



SMEG 763870059

SMEG 763870140

3221194 INDICATOR LIGHT NEON GREEN 220V
 \varnothing head 8 mm



SMEG 824610129

3221196 LAMP CAP CLEAR
 \varnothing 12 mm



3221197 GREY CAP \varnothing 12 mm



3221195 LAMP CAP GREEN \varnothing 12 mm
 \varnothing 12 mm



3221192 LAMP SUPPORT



3221193 ORANGE LAMP CAP
 \varnothing 12 mm





Suitable for:

3319219 SUPPORT FOR DARK GREY PUSH-BUTTON
mounting hole 16x16 mm - for push-button \varnothing 12 mm



SMEG



Suitable for:

3221097 INDICATOR LIGHT NEUTRAL 220V
head \varnothing 8 mm - 120°C



SMEG 824610038

SMEG 824610536

3221095 INDICATOR LIGHT ORANGE 230V
head \varnothing 13.5 mm - hole \varnothing 10 mm - 120°C
universal application



SMEG 824610597

3221237 ORANGE LAMP RECEPTACLE
head \varnothing 10 mm



SMEG 763870059

SMEG 763870140

Lamp receptacles and spare parts

3221236 LAMP RECEPTACLE W/LAMP E14 25W 230V
external dimensions 115x69 mm
max temperature 300°C



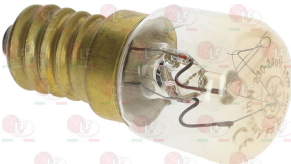
SMEG 696050050

5032244 GASKET FOR GLASS OVEN LAMP SOCKET
external dimensions 117x72 mm



SMEG 754131162

3221041 LAMP E14 15W 230V
max temperature 300°C - \varnothing 22x50 mm



SMEG 824610072

SMEG 824610198

SMEG 824610204

SMEG 824610591

SMEG 824610690

3221120 LAMP RECEPTACLE FOR LAMP E14 25W 230V
dimensioni esterne 106x65 mm





Suitable for:

D421015 OVEN LAMP DR FISCHER E14 15W 230V
ø 22x49 mm - max temperature 300°C



SMEG



Suitable for:

3621010 OVEN LAMP RECEPTACLE GLASS
external dimensions 115x69 mm



3221241 LAMP RECEPTACLE W/LAMP E14 25W 230V
lamp glass ø 41 mm
mounting hole ø 42 mm
max.temperature 300°C



3221061 LAMP E14 25W 230V
max temperature 300°C - ø 26x57 mm



SMEG 696050018

SMEG 696050051

SMEG 696050052

SMEG 824610176

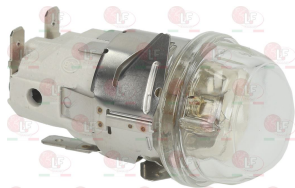
D421016 OVEN LAMP DR FISCHER E14 25W 230V
ø 25x57 mm - max temperature 300°C



2110636 OVEN LAMP RECEPTACLE GLASS ø 41 mm
thread ø 34 mm - overall height 36 mm



3221060 LAMP RECEPTACLE WITH LAMP E14 25W 230V
lamp glass ø 42 mm
mounting hole ø 38 mm
max temperature 300°C
for OVEN



3186522 GASKET FOR OVEN LAMP RECEPTACLE
dimensions ø 40x30x2 mm

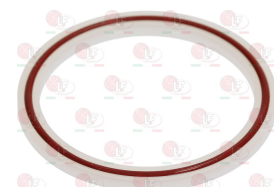


SMEG 696050082

3786614 GASKET FOR OVEN LAMP RECEPTACLE
dimensions 48x41x3 mm



3221392 GASKET KIT FOR OVEN LAMP RECEPTACLE
dimensions ø 53x44x3 mm





Suitable for:

3221061 LAMP E14 25W 230V
max temperature 300°C - ø 26x57 mm



SMEG 824610176

D421016 OVEN LAMP DR FISCHER E14 25W 230V
ø 25x57 mm - max temperature 300°C

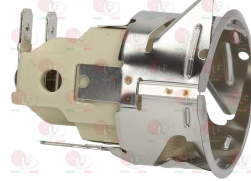


SMEG



Suitable for:

2101372 LAMP RECEPTACLE FOR LAMP E14 15-25W 230V
mounting hole ø 38 mm
max temperature 300°C

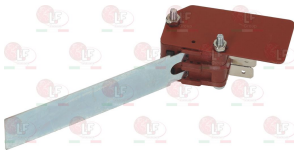


2110636 OVEN LAMP RECEPTACLE GLASS ø 41 mm
thread ø 34 mm - overall height 36 mm



Microswitches, mechanical

5020473 MICROSWITCH FOR DOOR 16A 250V
for Pot stove gas (SMEG)



SMEG 814490182

3240410 MICROSWITCH 16(4)A 250V



SMEG 814490796

3240236 LIMIT SWITCH CONTROL



3240233 MICROSWITCH FITTING M16x1.5 mm



3240203 BUSHING DOOR MICROSWITCH
external ø 10x15 mm



3240234 LIMIT SWITCH PIN



3250071 MICROSWITCH SPRING ø 13x25 mm





Suitable for:

3240235 RING NUT M16x1.5 mm



SMEG

Suitable for:



Motors

5059733 FAN \varnothing 120 mm
thickness 16 mm
blades no. 11 - hole \varnothing 6 mm



SMEG 769290111

5059732 MOTOR FOR FAN 15W 220/240V 50/60Hz
TYPE OSM-09



SMEG 795210548

5059733 FAN \varnothing 120 mm
thickness 16 mm
blades no. 11 - hole \varnothing 6 mm



SMEG 769290111

O-Ring and ORM gaskets

3186238 O-RING 0146 EPDM
ring thickness 3.53 mm - internal \varnothing 41.28 mm



SMEG 754131855

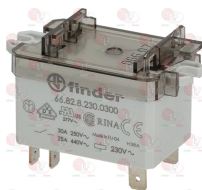
1186655 O-RING 04131 EPDM
ring thickness 3.53 mm - internal \varnothing 32.93 mm



SMEG 754131688

Relays

3351032 POWER RELAY FINDER 66.82.8.230.0300
230V 50/60Hz
2 contacts NO 30A



SMEG 816850402



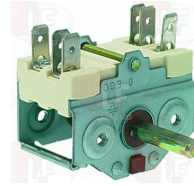
Selector switches

3057050 CONNECTING BRACKET 28x21x16 mm
distance between hooking brackets 27 mm
f/connection between selector switch and thermost.



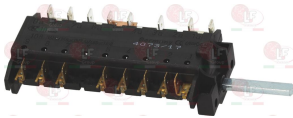
SMEG 018290023

3057026 SELECTOR SWITCH 0-1 POSITIONS
contact capacity 16A 250V - max 150°C
D shaft \varnothing 6x4.6 mm



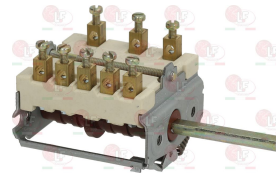
SMEG 811730078

5055327 SELECTOR SWITCH 7 POS. SMEG 811730316
contact capacity 16A 250V - max 150°C
D-shaped pin \varnothing 6x4.6 mm
for Pot stove gas (SMEG)



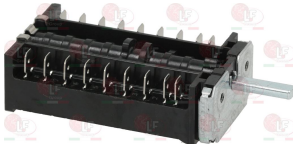
SMEG 811730316

5076559 SELECTRO SWITCH 0-4 POSITIONS
contact capacity 16A 250V - max 150°C
D-shaped pin \varnothing 6x4.6 mm



SMEG 811730109

5093519 SELECTRO SWITCH 0-4 POSITIONS
contact capacity 16A 250V - max 150°C
D-shaped pin \varnothing 6x4.6 mm



SMEG 811730240

5083588 SELECTRO SWITCH 0-6 POSITIONS
contact capacity 16A 250V - max 150°C
D-shaped pin \varnothing 6x4.6 mm



SMEG 811730125

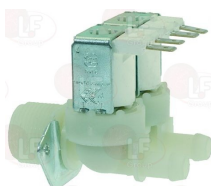
5090791 SELECTRO SWITCH 0-6 POSITIONS
contact capacity 16A 250V - max 150°C
D-shaped pin \varnothing 6x4.6 mm



SMEG 811730272

Solenoid valves

3120407 SOLEN. VALVE T&P 2 WAY 180°
230V 50/60Hz - max. temperature 90°C
inlet 3/4" - two outlets \varnothing 10.5 mm



SMEG 693050171

3120421 ADJUSTER FOR OUTLET T&P BLACK
flow rate 5 L/min - tolerance +/- 20%





Suitable for:

3120608 ADJUSTER FOR OUTLET T&P DARK BROWN
flow rate 1.2 L/min - tolerance +/- 25%



3120391 ADJUSTER FOR OUTLET T&P LIGHT BLUE
flow rate 1 L/min - tolerance +/- 25%



3120423 ADJUSTER FOR OUTLET T&P ORANGE
flow rate 0.5 L/min - tolerance +/- 25%



3120386 ADJUSTER FOR OUTLET T&P WHITE
flow rate 0.8 L/min - tolerance +/- 25%



D120056 ADJUSTER INLET T&P BRONZE
flowrate 12 L/min



D120057 ADJUSTER INLET T&P LIGHT BROWN
flowrate 16 L/min



SMEG



Suitable for:

3120568 ADJUSTER FOR OUTLET T&P GREEN
flow rate 3 L/min - tolerance +/- 25%



3120387 ADJUSTER FOR OUTLET T&P LIGHT BROWN
flow rate 1.5 L/min - tolerance +/- 25%



3120424 ADJUSTER FOR OUTLET T&P RED
flow rate 0.25 L/min - tolerance +/- 25%



3120422 ADJUSTER FOR OUTLET T&P YELLOW
flow rate 2.5 L/min - tolerance +/- 25%



D120054 ADJUSTER INLET T&P GREY
flowrate 6 L/min



D120058 ADJUSTER INLET T&P ORANGE
flowrate 20 L/min





Suitable for:

D120052 ADJUSTER INLET T&P RED
flowrate 3 L/min



D120053 ADJUSTER INLET T&P YELLOW
flowrate 5.5 L/min



3120431 COIL T&P 12Vac 50/60Hz
for solenoid valves T&P



D120090 COIL T&P 120V 60Hz 8VA
for solenoid valves T&P



3120432 COIL T&P 24Vac 50/60Hz
for solenoid valves T&P



3120404 SOLENOID VALVE T&P 1 WAY 90°
230V 50/60Hz - max. temperature 90°C
inlet 3/4" con riduttore di portata 10 L/min
outlet ø 10.5 mm



SMEG



Suitable for:

D120055 ADJUSTER INLET T&P WHITE
flowrate 10 L/min



D120059 ADJUSTER OUTLET T&P BLUE
flow rate 8 L/min - tolerance +/-25%



D120092 COIL T&P 12Vdc
for solenoid valves T&P



3120433 COIL T&P 220V 50/60Hz
for solenoid valves T&P



D120093 COIL T&P 24Vdc
for solenoid valves T&P



3120421 ADJUSTER FOR OUTLET T&P BLACK
flow rate 5 L/min - tolerance +/- 20%





Suitable for:

3120608 ADJUSTER FOR OUTLET T&P DARK BROWN
flow rate 1.2 L/min - tolerance +/- 25%



3120391 ADJUSTER FOR OUTLET T&P LIGHT BLUE
flow rate 1 L/min - tolerance +/- 25%



3120423 ADJUSTER FOR OUTLET T&P ORANGE
flow rate 0.5 L/min - tolerance +/- 25%



3120386 ADJUSTER FOR OUTLET T&P WHITE
flow rate 0.8 L/min - tolerance +/- 25%



D120056 ADJUSTER INLET T&P BRONZE
flowrate 12 L/min



D120057 ADJUSTER INLET T&P LIGHT BROWN
flowrate 16 L/min



SMEG



Suitable for:

3120568 ADJUSTER FOR OUTLET T&P GREEN
flow rate 3 L/min - tolerance +/- 25%



3120387 ADJUSTER FOR OUTLET T&P LIGHT BROWN
flow rate 1.5 L/min - tolerance +/- 25%



3120424 ADJUSTER FOR OUTLET T&P RED
flow rate 0.25 L/min - tolerance +/- 25%



3120422 ADJUSTER FOR OUTLET T&P YELLOW
flow rate 2.5 L/min - tolerance +/- 25%



D120054 ADJUSTER INLET T&P GREY
flowrate 6 L/min



D120058 ADJUSTER INLET T&P ORANGE
flowrate 20 L/min





Suitable for:

D120052 ADJUSTER INLET T&P RED
flowrate 3 L/min



D120053 ADJUSTER INLET T&P YELLOW
flowrate 5.5 L/min



3120431 COIL T&P 12Vac 50/60Hz
for solenoid valves T&P



D120090 COIL T&P 120V 60Hz 8VA
for solenoid valves T&P



3120432 COIL T&P 24Vac 50/60Hz
for solenoid valves T&P



SMEG



Suitable for:

D120055 ADJUSTER INLET T&P WHITE
flowrate 10 L/min



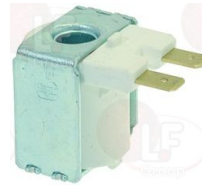
D120059 ADJUSTER OUTLET T&P BLUE
flow rate 8 L/min - tolerance +/-25%



D120092 COIL T&P 12Vdc
for solenoid valves T&P



3120433 COIL T&P 220V 50/60Hz
for solenoid valves T&P



D120093 COIL T&P 24Vdc
for solenoid valves T&P



Spark generators

3181004 SPARK GENERATOR 6 OUTLETS
220/240V - 50/60Hz





Suitable for:

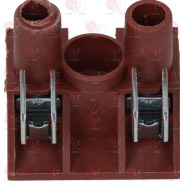
SMEG



Suitable for:

Terminal blocks

3247018 **TERMINAL BLOCK 2-POLES FV77 20A 600V**
for cable max 4 mm²
operating temperature 150°C
nominal voltage 450 V



SMEG 825170088

3247016 **TERMINAL BLOCK 3-POLES FV273 40A 450V**
for cable max 6 mm²
operating temperature 150°C
nominal voltage 450 V



SMEG 825170033

3247009 **TERMINAL BLOCK 6-POLES FV122/B 40A 600V**
for cable max 6 mm²
operating temperature 150°C
nominal voltage 450 V



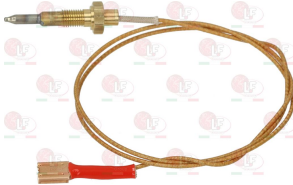
SMEG 825170029

SMEG 825170081

SMEG 825170323

Thermocouples and accessories

7102707 **THERMOCOUPLE FASTON FITTING 65 cm**
threaded coupling M6x0.75



SMEG 948650091

Thermostats

5067910 **SINGLE-PHASE THERMOSTAT 0-40°C**
D-shaped pin ø 6x4.6 mm
covered capillary length 840 mm - 16A 250V
bulb ø 6x130 mm



SMEG 818730224

3444019 **SINGLE-PHASE THERMOSTAT 30-90°C**
D-shaped pin ø 6x4.6 mm
capillary length 1000 mm - 16A 250V
bulb ø 6x130 mm



SMEG 818731106



5078636 SINGLE-PHASE THERMOSTAT 320°C
with manual reset
covered capillary length 570 mm - 16A 250V
bulb \varnothing 3x136 mm



SMEG 818731516

Suitable for:

5090792 SINGLE-PHASE THERMOSTAT 50-280°C
D-shaped pin \varnothing 6x4.6 mm
covered capillary length 1100 mm - 16A 250V
bulb \varnothing 3x146 mm



SMEG 818731157

5093046 SINGLE-PHASE THERMOSTAT 50-300°C
D-shaped pin \varnothing 6x4.6 mm
covered capillary length 1000 mm - 16A 250V
bulb \varnothing 3x153 mm



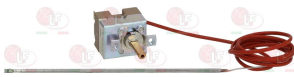
SMEG 818731181

5036553 SINGLE-PHASE THERMOSTAT 52-260°C
D-shaped pin \varnothing 6x4.6 mm
covered capillary length 950 mm - 16A 250V
bulb \varnothing 3x140 mm



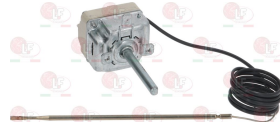
SMEG 818731179

5070612 THERMOSTAT SINGLE-PHASE 300°C
D-shaped pin \varnothing 6x4.6 mm
covered capillary length 960 mm - 16A 250V
bulb \varnothing 3x167 mm



SMEG 818730642

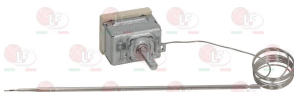
5022956 THERMOSTAT SINGLE-PHASE 50-275°C
D-shaped pin \varnothing 6x4.6 mm
covered capillary length 900 mm - 16A 250V
bulb \varnothing 3x133 mm
for Pot stove gas (SMEG)



SMEG 818730269

SMEG 818731138

2101871 THERMOSTAT SINGLE-PHASE 50-320°C
D-shaped pin \varnothing 6x4,6 mm
capillary length 840 mm - 16A 250V
bulb \varnothing 3x178 mm



SMEG 60120918

3444354 THREE-PHASE THERMOSTAT 350°C
with manual reset
capillary length coated 950 mm - 10A 400V
bulb \varnothing 3x190 mm



SMEG 818731004

The data herewith contained may change without notice and LF SpA cannot be held responsible for possible errors stated or resulting by the use of this document. All rights reserved. No part of this publication may be reproduced without written permission by LF SpA.



Distributing Components, Spare Parts & Accessories in original quality worldwide

-
- LF SpA HEADQUARTERS**
via Voltri, 80 - 47522 Cesena (FC) ITALY
Tel. +39 0547 34 11 11 - Fax +39 0547 34 11 10
www.lfircambi724.it - info@lfircambi.it
Export Dept. Tel. +39 0547 34 11 50 - Fax +39 0547 34 11 55
www.lfspareparts724.com - export@lfspareparts.com
- LF SpA HOUSEHOLD COMPONENTS DIVISION**
Via Padriciano, 99 - AREA Science Park - 34149 Trieste (TS) ITALY
Tel. +39 0547 34 12 42 - Fax +39 0547 34 12 48
www.lfspareparts724.com - info@lfspareparts.com
- EPGC Sas FRANCE**
13, Rue des Forts - 59960 Neuville en Ferrain
Tel. +33 (0)3 20 25 06 21 - Fax +33 (0)3 20 25 34 12
www.epgc.com - epgc@epgc.com
- LF GmbH GERMANY**
Junkersstrasse, 3 - D-82178 Puchheim - München
Tel. +49 89 89 45 78 66 - Fax +49 89 89 45 78 88
www.lfersatzteile724.de - info@lfersatzteile.de
- LF China REPUBLIC OF CHINA**
Room 403, No.2, Huadu Mansion, Lane 422, Huanghua Rd.
Minhang Dist. - 201103 Shanghai
Tel. +86 (0)21 33 53 66 31 - Fax +86 (0)21 33 53 66 32
www.lfspareparts724.com - china@lfspareparts.com
- OOO LF RUSSIAN FEDERATION**
Ul. Anatoliya Zhivova, 8 - office 1 - 123100 Moscow
Tel./Fax +7 495 725 26 53
www.lfspareparts724.ru - info@lfspareparts.ru
- LF Repuestos Horeca S.L.U. SPAIN**
Poligono Industrial Carpetania - C/Miguel Faraday, 8 - 28906 Getafe
Tel. +34 91 477 91 00 - Fax +34 91 477 90 81
www.lfrepuestos-horeca724.es - info@lfrepuestos.es
- LF Scandinavia Aps - LF Spareparts S.p.A. DENMARK**
Nupark, 51 - 7500 Holstebro
Tel. +45 70 70 77 33
www.lfspareparts724.dk - denmark@lfspareparts.dk
- LF SpA Cesena (IT) Swiss Branch Steinhausen SWITZERLAND**
Sennweidstrasse, 45 - CH-6312 Steinhausen
Tel. +41 (0)41 760 15 80/1 - Fax +41 (0)41 760 15 85
www.lfersatzteile724.ch - info@lfersatzteile.ch
- LF Spare Parts Ltd. UNITED KINGDOM**
A10a Lakeside Business Park, Broadway Lane
South Cerney, Gloucestershire GL7 5XL
Tel. +44 (0)1285 86 16 25 - Fax +44 (0)1285 86 39 49
www.lfspareparts724.co.uk - info@lfspareparts.co.uk
- LF Central Est Europe S.r.o. CZECH REPUBLIC**
Antala Staska 1859/34
14000 Praha 4 - KRC
Tel. +420 730 156 910
www.lfspareparts724.cz - info@lfspareparts.cz
- LF SPARE PARTS INC. USA**
Legal address:
155 Office Plaza Dr - Suite A - Tallahassee, FL 32301
Business/Mailing address:
1100 South Tower, 225 Peachtree St., N.E. - Atlanta, GA 30303, USA
Tel. +1-404-525-2600 - Fax +1-404-586-3528
www.lfspareparts724.us - info@lfspareparts.us
Tel. West Coast and Midwest: 206-349-1525 Sauro
Tel. East Coast and the Caribbean: 786-817-1764 Luis
-
- AUSTRALIA AND NEW ZEALAND**
www.lfspareparts724.com
andrea.calvio@lfspareparts.com
- AUSTRIA**
www.lfersatzteile724.at
info@lfersatzteile.at
- BALKAN COUNTRIES**
www.lfspareparts724.com
matija.ramov@lfspareparts.com
- BALTIC COUNTRIES**
www.lfspareparts724.com
inara.silina@lfspareparts.com
- LATIN AMERICA AND THE CARRIBEANS**
www.lfrepuestos-horeca724.es
export@lfrepuestos.es
- POLAND**
www.lfspareparts724.pl
info@lfspareparts.pl
- SOUTH KOREA**
www.lfspareparts724.com
fabio.doni@lfspareparts.com
- TURKEY**
www.lfyedekparca724.com
export@lfspareparts.com