



Spare parts for the professional sector:  
**Cooking equipment**



Suitable for:

**SILANOS**



This catalogue is automatically generated.  
Therefore, the sequence of the items might  
not be always shown at best.  
Updates will be issued in case of additions  
and/or amendments.

*Suitable **universal spare parts** may not be included*





Suitable for:

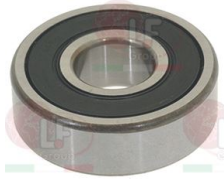
# SILANOS



Suitable for:

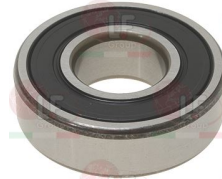
## Bearings

**1063005 BEARING 6201 DDU NSK**  
external  $\varnothing$  32mm - internal  $\varnothing$  12mm - thickness 10mm



SILANOS TR0050

**D063052 BEARING 6204-2RS SKF**  
single box packaging



SILANOS TR0049

## Bulb sheathes

**3187006 THERMOSTAT SHEATH  $\varnothing$  1/2"**  
bulb length 105 mm



SILANOS TR0298

**3186138 ASBESTOS FREE FLAT GASKET  $\varnothing$  30x21x2 mm**



**3743651 BULB SHEATH RING NUT  $\varnothing$  1/2"**

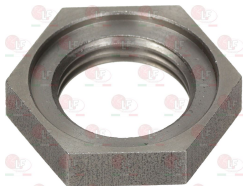


SILANOS 902061

**3187050 COUNTER NUT  $\varnothing$  1/2"**  
with milled seat for gasket  
with gasket  $\varnothing$  26 mm



**5007276 COUNTER NUT OF ST. STEEL  $\varnothing$  1/2"**  
with milled seat for gasket  $\varnothing$  27 mm



**3786547 GASKET FLAT EPDM  $\varnothing$  24x16x3 mm**  
for bulb holder sheathing



SILANOS 903250

## Cable glands

**3050143 CABLE GLAND PG13.5**



SILANOS 902687



## Clamps

**3449402 DOUBLE-WIRE CLAMP 7.8-8.3 - 100 PCS**  
for hoses  $\varnothing$  7.8÷8.3 mm



SILANOS 902425

**3449462 HOSE CLAMP 12-20**  
for pipes  $\varnothing$  12÷20 mm  
made of stainless steel AISI 304  
height 9 mm and screw E7  
suitable for food industry



SILANOS 902440

**3449452 HOSE CLAMP 16-25**  
for pipes  $\varnothing$  16÷25 mm  
made of stainless steel AISI 304  
height 9 mm and screw E7  
suitable for food industry



SILANOS 902450

**3449453 HOSE CLAMP 25-40**  
for pipes  $\varnothing$  25÷40 mm  
made of stainless steel AISI 304  
height 9 mm and screw E7  
suitable for food industry



SILANOS 902460

**3449454 HOSE CLAMP 32-50**  
for pipes  $\varnothing$  32÷50 mm  
made of stainless steel AISI 304  
height 9 mm and screw E7  
suitable for food industry



SILANOS 902441

**3449455 HOSE CLAMP 40-60**  
for pipes  $\varnothing$  40÷60 mm  
made of stainless steel AISI 304  
height 9 mm and screw E7  
suitable for food industry



SILANOS 902480

**3449456 HOSE CLAMP 50-70**  
for pipes  $\varnothing$  50÷70 mm  
made of stainless steel AISI 304  
height 9 mm and screw E7  
suitable for food industry



SILANOS 902490



Suitable for:

# SILANOS



Suitable for:

## Contact thermostats

**3444609 CONTACT THERMOSTAT KSD301-R 95°C**  
manual reset - 10A 250V



SILANOS 907243

**3443054 CONTACT THERMOSTAT 100°C**  
with manual reset  
universal



SILANOS 907245

**3444341 CONTACT THERMOSTAT 215°C 16A 250V**  
with manual reset - pin M4  
for Panini grill electric (SILANOS)



SILANOS 907101

**3445403 CONTACT THERMOSTAT 55°C**  
with automatic reset



SILANOS 907120

SILANOS 907123

SILANOS 907244

**3444608 CONTACT THERMOSTAT 60°C**  
automatic reset - for wash tank



SILANOS 907120

## Contactors

**3446556 CONTACTOR LOVATO BG0910A**  
coil 9A 230V 50/60Hz 4Kw  
3 normally open contacts  
1 normally open auxiliary contact



SILANOS 907041

SILANOS 907096

SILANOS 907043

SILANOS 907190

SILANOS 907095

**3446227 AUXILIARY CONTACT LOVATO G218**  
10A  
1 contact NO  
1 contact NC





## Electrical capacitors

**3068016 CAPACITOR DUCATI ENERGIA 10 $\mu$ F**  
 450V 50/60Hz  
 operating temperature -25 +85°C  
 lead connector 6.35x0.8 mm  
 $\varnothing$  36xh58 mm



SILANOS 901730

**3068019 CAPACITOR DUCATI ENERGIA 12,5 $\mu$ F**  
 450V 50/60Hz  
 operating temperature -25 +85°C  
 lead connection 6.35x0.8 mm  
 $\varnothing$  36xh70 mm



SILANOS 901740

**3068008 CAPACITOR DUCATI ENERGIA 5 $\mu$ F**  
 450V 50/60Hz  
 operating temperature -25 +85°C  
 lead connection 6.35x0.8 mm  
 $\varnothing$  28xh55 mm



SILANOS 901745

**3068080 CAPACITOR ELECTRICAL 10 $\mu$ F**  
 450V 50/60Hz -  $\varnothing$  30xh71 mm



SILANOS 901730

**3068081 CAPACITOR ELECTRICAL 12.5 $\mu$ F**  
 450V 50/60Hz -  $\varnothing$  35xh71 mm



SILANOS 901740

**3068096 CAPACITOR ELECTRICAL 5 $\mu$ F**  
 450V 50/60Hz -  $\varnothing$  30xh51 mm



SILANOS 901745

**3068097 CAPACITOR ELECTRICAL 6.3 $\mu$ F**  
 450V 50/60Hz -  $\varnothing$  30xh51 mm



SILANOS 901744

## Feet

**3313040 ADJUSTABLE S/ST. FOOT  $\varnothing$  1"1/2 x h 95 mm**  
 with fixed screw M10x25 mm  
 adjustable height 95÷150 mm



SILANOS TR0860

SILANOS TR0861

SILANOS 905016

**3313023 RUBBER FOOT  $\varnothing$  25x25 mm HOLE  $\varnothing$  5 mm**



SILANOS 904960

SILANOS 904961





Suitable for:

# SILANOS



Suitable for:

## Fittings

3349343 NICHEL-PL.HOSE-END FITTING  $\varnothing$  1/8" M  $\varnothing$  8



SILANOS 907942

3349320 NICHEL-PLATED FITTING  $\varnothing$  1/2" M-1/2" M



SILANOS TR2322

## Gaskets and seals

3186010 ASBESTOS FREE FLAT GASKET  $\varnothing$  54x42x2 mm



SILANOS 903300

## Heating elements

3355327 HEATING ELEMENT 1000W 230V BOTTOM  
length 180 mm - width 180 mm  
for Panini grill electric (SILANOS) DOPPIA  
DOPPIA RIGATA



SILANOS 905670

SILANOS 905671

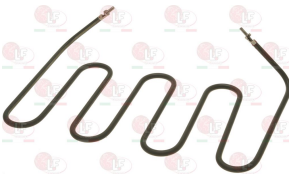
3355328 HEATING ELEMENT 1200W 230V TOP  
length 265 mm - width 170 mm  
for Panini grill electric (SILANOS) MEDIA RIGATA



SILANOS 905611

SILANOS 905615

3355329 HEATING ELEMENT 1400W 230V LOWER  
length 185 mm - width 280 mm  
for Panini grill (SILANOS)



SILANOS 905631

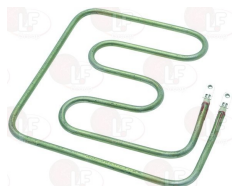
SILANOS 905635

5057418 HEATING ELEMENT 2000W 230V  
length 160 mm - width 160 mm  
fittings  $\varnothing$  1/4"



SILANOS 905592

3355326 HEATING ELEMENT 750W 230V UPPER  
length 175 mm - width 185 mm  
for Panini grill electric (SILANOS) DOPPIA  
DOPPIA RIGATA



SILANOS 905650

SILANOS 905651

5023892 HEATING ELEMENT 800W 230V  
length 260 mm - width 210 mm  
for Panini grill (SILANOS)



SILANOS 905683

Suitable for:

**3455472 QUARTZ HEATING ELEMENT 500W 110V**  
length 390 mm -  $\varnothing$  10 mm  
for Toaster electric (SILANOS) FA3



SILANOS 905590

SILANOS 907382

Suitable for:

**3355299 QUARTZ TUBE  $\varnothing$  10x390 mm**



SILANOS 907380

**3755769 QUARTZ HEATING ELEMENT 500W 115V**  
total length 365 mm -  $\varnothing$  11.5 mm



SILANOS 905593

**3355299 QUARTZ TUBE  $\varnothing$  10x390 mm**



SILANOS 907380

## Hydraulic piping

**3450152 HOSE RUBBER REINFORCED  $\varnothing$  13/19 mm**  
internal  $\varnothing$  13 mm - external  $\varnothing$  19 mm  
temperature -40+100°C  
sold per meter



SILANOS 907295

**3450111 RUBBER PIPE  $\varnothing$  10x17 mm - 5 m**  
operating temperature -40+100°C



SILANOS 907360

**3450209 RUBBER PIPE  $\varnothing$  13x20 mm - 40 m**  
operating temperature -40+100°C



SILANOS 907295

SILANOS 907350

**3450109 RUBBER PIPE  $\varnothing$  13x20 mm - 5 m**  
operating temperature -40+100°C



SILANOS 907350

**1449681 SILICONE HOSE  $\varnothing$  4x7 SHORE 60 - 5 m**  
alimentary



SILANOS 907272

SILANOS 907279



Suitable for:

# SILANOS



Suitable for:

## Indicator lights

**3221222 INDICATOR LIGHT GREEN 230V**  
ø head 7 mm - ø hole 6 mm - 120°C  
wire connection length 200 mm



SILANOS 903648

**3221180 INDICATOR LIGHT GREEN 400V**  
head ø 10 mm - hole ø 9 mm - 120°C



SILANOS 903632

SILANOS 903643

SILANOS 903647

**3221183 INDICATOR LIGHT GREEN 400V**  
head ø 13.5 mm - hole ø 10 mm - 120°C  
universal application



SILANOS 903641

**3221184 INDICATOR LIGHT ORANGE 400V**  
ø head 13.5 mm - hole ø 10 mm - 120°C  
universal application



**3221112 INDICATOR LIGHT ORANGE 220V**  
head ø 7 mm - hole ø 6 mm - 120°C  
application to the board



SILANOS 903710

**5037049 LAMP CAP TAPERED CONICAL ORANGE SU3**  
mounting hole ø 6 mm - head ø 7 mm



**1221036 INDICATOR LIGHT ORANGE 230V**  
head ø 7 mm - hole ø 6 mm  
wire connection length 200 mm



SILANOS 903644

**3221136 INDICATOR LIGHT ORANGE 400V**  
head ø 10 mm - hole ø 9 mm  
for Sausage grill (SILANOS) ROLLY5 - ROLLY8



SILANOS 903629

SILANOS 903640

SILANOS 903642

**3221624 INDICATOR LIGHT ORANGE 400V**  
head ø 10 mm - hole ø 9 mm  
wire connection 200 mm long



SILANOS 903646





## Interference suppression filters

**3160479 INTERFERENCE SUP. FILTER D.E.M.FC701Y2FL**  
0.47 $\mu$ F



SILANOS 902105

## Ironmongery (screws,nuts,washers)

**1186058 COGGED WASHER EXTERNAL M8**  
internal/external  $\varnothing$  8.4/15 mm - thickness 0.8 mm  
stainless steel - UNI 8842 A - DIN 6798 A



SILANOS 905890

**5039329 COUNTERSUNK FLAT HEAD SCREWS M5x25**  
cross recessed - stainless steel  
UNI 7688 - DIN 965 - ISO 7046



SILANOS 907871

**3528291 CROSS HEAD FLUSH SCREW M4x8**  
cross-shaped - st./steel  
UNI 7688 -DIN 965 - ISO 7046



SILANOS 907851

**9742006 FEATHER KEY ST. STEEL C40 6x6x25 mm**  
UNI 6604/A - DIN 6685/A



SILANOS TR1045

**1186192 FLAT WASHER M5**  
internal/external  $\varnothing$  5.3/10 mm - thickness 1 mm  
stainless steel - UNI 6592 - DIN 125 A - ISO 7089



SILANOS 906010

**3743145 FLAT WASHER M8**  
internal/external  $\varnothing$  8.4/16 mm - thickness 1.6 mm  
stainless steel - UNI 6592 - DIN 125 A - ISO 7089



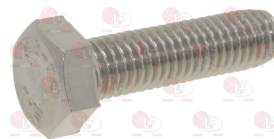
SILANOS 906040

**5022029 HEXAGON HEAD SCREW M10x16**  
stainless steel - UNI 5739 - DIN 933 - ISO 4017



SILANOS 907846

**9528028 HEXAGON HEAD SCREW M8x30**  
stainless steel - UNI 5739 - DIN 933 - ISO 4017



SILANOS 907829



Suitable for:

# SILANOS



**5022074** **HEXAGON HEAD SCREW M8x40**  
stainless steel - UNI 5739 - DIN 933 - ISO 4017



SILANOS 907835

**3528111** **HEXAGONAL HEAD SCREW M6x10**  
st./steel - UNI 5739 - DIN 933 - ISO 4017



SILANOS 907731

SILANOS 907780

**3528094** **HEXAGONAL HEAD SCREW M8x12**  
st./steel - UNI 5739 - DIN 933 - ISO 4017



SILANOS 907820

**3060054** **HEXAGONAL NUT M10 MEDIUM**  
stainless steel - UNI 5588 - DIN 934 - 4032



SILANOS 902022

SILANOS 902025

SILANOS 902035

**3060069** **HEXAGONAL NUT M8 MEDIUM**  
stainless steel - UNI 5588 - DIN 934 - ISO 4032



SILANOS 902020

**1528030** **MID HEXAGONAL NUT M6**  
stainless steel - UNI 5588 - DIN 934 - ISO 4032



SILANOS 902010

**3053163** **SELF-LOCKING HEXAGON NUT M6**  
stainless steel - with nylon built-in ring  
UNI 7473 - DIN 982 - ISO 7040



SILANOS 902040

SILANOS 902041

**1186504** **WASHER FLAT M10**  
internal/external  $\varnothing$  10.5/20 mm - thickness 2 mm  
stainless steel - UNI 6592 - DIN 125 A - ISO 7089



SILANOS 906055

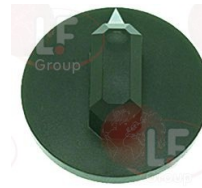
## Knobs

**3241173** **BLACK KNOB  $\varnothing$  44 mm**  
D-shaped hole 6x4.6 mm  
for Toaster (SILANOS)



SILANOS 903940

**3241174** **BLACK KNOB  $\varnothing$  44 mm**  
D-shaped hole 6x4.6 mm  
for Toaster (SILANOS)



SILANOS 903961

SILANOS 903973

Suitable for:

Suitable for:

**3241165 KNOB BLACK  $\varnothing$  43 mm 50-300°C**  
D-shaped hole 6x4.6 mm  
for Panini grill (SILANOS) ROLLY



SILANOS 903970

SILANOS 903972

## O-Ring and ORM gaskets

**3243009 O-RING 0106 EPDM**  
ring thickness 1.78 mm - internal  $\varnothing$  6.75 mm



SILANOS 904321

**1186255 O-RING 0109 EPDM**  
ring thickness 2.62 mm - internal  $\varnothing$  9.13 mm



SILANOS 904391

**3186238 O-RING 0146 EPDM**  
ring thickness 3.53 mm - internal  $\varnothing$  41.28 mm



SILANOS 904380

**1186352 O-RING 02050 EPDM**  
ring thickness 1.78 mm - internal  $\varnothing$  12.42 mm



SILANOS 904320

SILANOS 904324

**1186358 O-RING 03030 EPDM**  
ring thickness 2.62 mm - internal  $\varnothing$  7.59 mm



SILANOS 904430

**1186356 O-RING 03075 EPDM**  
ring thickness 2.62 mm - internal  $\varnothing$  18.72 mm



SILANOS 904330

**1186630 O-RING 04087 EPDM**  
ring thickness 3.53 mm - internal  $\varnothing$  21.82 mm



SILANOS 904404

**1186655 O-RING 04131 EPDM**  
ring thickness 3.53 mm - internal  $\varnothing$  32.93 mm



SILANOS 904350



Suitable for:

**3067198 O-RING 04162 EPDM**  
ring thickness 3.53 mm - internal  $\varnothing$  40.86 mm



SILANOS

Suitable for:

**1186643 O-RING 04212 EPDM**  
ring thickness 3.53 mm - internal  $\varnothing$  53.57 mm



SILANOS 904395

**3186001 O-RING 06150 EPDM**  
ring thickness 5.34 mm - internal  $\varnothing$  37.47 mm



SILANOS TR0190

SILANOS 907981

**3186014 O-RING 06225 EPDM  $\varnothing$  67 mm**  
ring thickness 5.34 mm - internal  $\varnothing$  56.52 mm



SILANOS TR0115

## Pliers for sandwiches and toasts

**3317051 GRILL PLIER**  
length 100 mm  
height 180 mm



SILANOS 905030

## Refractory tiles

**5038245 GLASS-CERAMIC PLATE 280x230 mm**



SILANOS 904933

**5042476 GLASS-CERAMIC PLATE 460x280 mm**  
for Kitchen (SILANOS) DOPPIA VTC TENDO



SILANOS 904931

## Relays

**1351001 POWER RELAY FINDER 62.83.8.024.0000**  
24Vac 50/60Hz  
3 changeover contacts 16A



SILANOS TR0300

**3351008 POWER RELAY FINDER 62.83.8.230.0000**  
230V 50/60Hz  
3 exchange contacts 16A



SILANOS 905474  
SILANOS 905479

SILANOS 905475

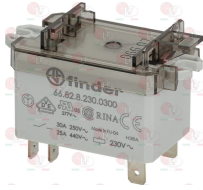
SILANOS 905476



Suitable for:

Suitable for:

**3351032 POWER RELAY FINDER 66.82.8.230.0300**  
230V 50/60Hz  
2 contacts NO 30A



SILANOS 905486

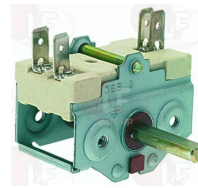
## Selector switches

**3057019 SELECTOR SWITCH 0-1 POSITIONS**  
contact capacity 16A 250V - max 150°C  
D-shaped pin  $\varnothing$  6x4.6 mm



SILANOS 901727

**3057151 SELECTOR SWITCH 0-2 POSITIONS**  
contact capacity 16A 250V - max temperature 150°  
D-shaped pin  $\varnothing$  6x4.6 mm  
for Toaster electric (SILANOS) FA3



SILANOS 901720

## Solenoid valves

**3120005 SOLEN. VALVE ELBI TYPE 329 1 WAY 180°**  
220/240V 50/60Hz - max. temperature 90°C  
inlet 3/4" - outlet  $\varnothing$  10.5 mm



SILANOS 902390

**3120019 ADJUSTER FOR INLET ELBI BLACK**  
flow rate 5.5 L/min - tolerance +/- 15%



**3120021 ADJUSTER FOR INLET ELBI BLACK**  
flow rate 12 L/min - tolerance +/- 15%



**3120022 ADJUSTER FOR INLET ELBI BLACK**  
flow rate 16 L/min - tolerance +/- 15%



**3120037 ADJUSTER FOR OUTLET ELBI GREEN**  
flow rate 0.25 L/min - tolerance +/- 25%



**3120201 ADJUSTER FOR OUTLET ELBI GREY**  
flow rate 4.7 L/min - tolerance +/- 25%





Suitable for:

**3120016 ADJUSTER FOR OUTLET ELBI NEUTRAL**  
flow rate 1.2 L/min - tolerance +/- 25%



**3120015 ADJUSTER FOR OUTLET ELBI RED**  
flow rate 0.5 L/min - tolerance +/- 25%



**3120202 ADJUSTER FOR OUTLET ELBI YELLOW**  
flow rate 0.35 L/min / tolerance +/- 25%



**3120204 OUTLET ADJUSTER ELBI BLACK**  
flow rate 5.5 L/min - tolerance +/- 25%



# SILANOS



Suitable for:

**3120017 ADJUSTER FOR OUTLET ELBI ORANGE**  
flow rate 2.5 L/min - tolerance +/- 25%



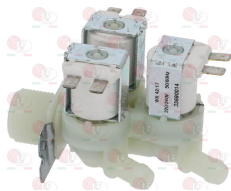
**3120203 ADJUSTER FOR OUTLET ELBI WHITE**  
flow rate 2 L/min - tolerance +/- 25%



**3120000 FILTER FOR INLET SOLENOID VALVE ELBI**



**3120014 SOLENOID VALVE ELBI TYPE 369 3-WAY 180°**  
220/240V 50/60Hz - max temperature 90°C  
inlet 3/4" - three outlets ø 10.5 mm



**3120019 ADJUSTER FOR INLET ELBI BLACK**  
flow rate 5.5 L/min - tolerance +/- 15%



SILANOS 902410

**3120021 ADJUSTER FOR INLET ELBI BLACK**  
flow rate 12 L/min - tolerance +/- 15%



**3120022 ADJUSTER FOR INLET ELBI BLACK**  
flow rate 16 L/min - tolerance +/- 15%







Suitable for:

**3120037 ADJUSTER FOR OUTLET ELBI GREEN**  
flow rate 0.25 L/min - tolerance +/- 25%



**3120016 ADJUSTER FOR OUTLET ELBI NEUTRAL**  
flow rate 1.2 L/min - tolerance +/- 25%



**3120015 ADJUSTER FOR OUTLET ELBI RED**  
flow rate 0.5 L/min - tolerance +/- 25%



**3120202 ADJUSTER FOR OUTLET ELBI YELLOW**  
flow rate 0.35 L/min / tolerance +/- 25%



**3120204 OUTLET ADJUSTER ELBI BLACK**  
flow rate 5.5 L/min - tolerance +/- 25%



**3120541 SOLENOID VALVE L140B5 ø 1/2"FF 24V**  
for water  
normally closed  
max. temperature 100°C  
max. differential pressure 10 bar  
coil 24V 50/60Hz



SILANOS TR0091

# SILANOS

Suitable for:

**3120201 ADJUSTER FOR OUTLET ELBI GREY**  
flow rate 4.7 L/min - tolerance +/- 25%



**3120017 ADJUSTER FOR OUTLET ELBI ORANGE**  
flow rate 2.5 L/min - tolerance +/- 25%



**3120203 ADJUSTER FOR OUTLET ELBI WHITE**  
flow rate 2 L/min - tolerance +/- 25%



**3120000 FILTER FOR INLET SOLENOID VALVE ELBI**



**3120043 COIL SIRAI Z610A 24V 50/60Hz 6W**



SILANOS TR0020





Suitable for:

**3120044 CONNECTOR FEMALE SMALL**  
for coils



# SILANOS



Suitable for:

**3120200 DIAPHRAGM FOR L140 B5**



## Springs

**3250009 LEFTHAND SPRING  $\varnothing$  19x45 mm**  
for ELECTRIC PLATE SINGLE AND DOUBLE



SILANOS 904081

**3250105 LEFTHAND SPRING  $\varnothing$  20x56 mm**  
for MIDDLE PLATE



SILANOS 904101

**3250104 RIGHTHAND SPRING  $\varnothing$  20x56 mm**  
for MIDDLE PLATE



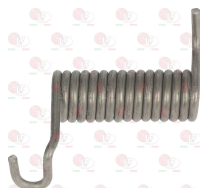
SILANOS 904100

**3250008 RIGHTHAND SPRING  $\varnothing$  19x45 mm**  
for ELECTRIC PLATE SINGLE AND DOUBLE



SILANOS 904080

**5079613 SPRING LEFT  $\varnothing$  20x70 mm**  
for Panini grill glass-ceramics (SILANOS)  
PIASTRA DOPPIA



SILANOS 904135

**5079614 SPRING RIGHT  $\varnothing$  20x70 mm**  
for Panini grill glass-ceramics (SILANOS)  
DOPPIA VETROCERAMICA



SILANOS 904136

## Switches

**3319030 CHANGEOVER SWITCH 2 POLE GREEN 16A 250V**  
16(4)A 250V - max. temperature 120°C  
with indicator light - mounting hole 22x30 mm



SILANOS 903610

SILANOS 903613

**3319780 BLOCK CONNECTION WHITE 22x30 mm**





Suitable for:

**3319779 BLOCK CONNECTIONS BLACK 22x30 mm**



**3319783 FRAME SAFETY 4 SIDES BLACK 22x30 mm**



# SILANOS

Suitable for:

**3319782 FRAME SAFETY 2 SIDES BLACK 22x30 mm**



**3319501 PUSH-BUTTON PROTECTION CAP**  
external dimensions 29x36 mm  
for switches with mounting hole 22x30 mm



## Telethermometers

**3441011 TELE-THERMOMETER BLACK 56x25 mm 0-120°C**  
plastic case  
capillary length 1500 mm  
bulb  $\varnothing$  6x15 mm



SILANOS 907090

## Terminal blocks

**3247016 TERMINAL BLOCK 3-POLES FV273 40A 450V**  
for cable max 6 mm<sup>2</sup>  
operating temperature 150°C  
nominal voltage 450 V



SILANOS 904140

**3247009 TERMINAL BLOCK 6-POLES FV122/B 40A 600V**  
for cable max 6 mm<sup>2</sup>  
operating temperature 150°C  
nominal voltage 450 V



SILANOS 904150

## Thermostats

**3444008 KNOB BLACK  $\varnothing$  41 mm 0-90°C**  
D-shaped hole 6x4.6 mm  
for thermostat IMIT



SILANOS 903982

**3444174 SINGLE-PHASE THERMOSTAT 50-320°C**  
D-shaped pin  $\varnothing$  6x4.6 mm  
capillary length 900 mm - 16A 250V  
bulb  $\varnothing$  3x220 mm



SILANOS 907132

SILANOS 908326



Suitable for:

# SILANOS



## 3444006 THERMOSTAT SINGLE-PHASE TR2 0-210°C

D-shaped pin  $\varnothing$  6x4.6 mm  
capillary length 1000 mm - 15A 250V  
bulb  $\varnothing$  5x140 mm

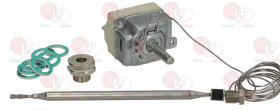


SILANOS TR0441

Suitable for:

## 2100284 THERMOSTAT SINGLE-PHASE 30-110°C

D-shaped pin  $\varnothing$  6x4.6 mm  
capillary length 900 mm - 16A 250V  
bulb  $\varnothing$  6x130 mm - with stuffing gland fitting M9x1  
with complete tank sealing fitting M12x1

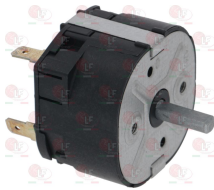


SILANOS 907135

## Timers

## 3446137 TIMER 15 MINUTES M2

mechanical movement with balance wheel  
manually set mechanical timer  
manually set cycle 15 minutes  
bipolar with contact capacity 16(4)A 250V  
max temperature 125°C  
D-shaped pin  $\varnothing$  6x4.6 mm  
for all models



SILANOS 907055

## 3241161 BLACK KNOB $\varnothing$ 40 mm

D-shaped hole 6x4.6 mm



## 3241173 BLACK KNOB $\varnothing$ 44 mm

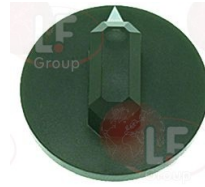
D-shaped hole 6x4.6 mm  
for Toaster (SILANOS)



SILANOS 903940

## 3241174 BLACK KNOB $\varnothing$ 44 mm

D-shaped hole 6x4.6 mm  
for Toaster (SILANOS)



SILANOS 903961

SILANOS 903973

## 3241377 KNOB BLACK $\varnothing$ 50 mm 3-6-9-12-15 MINUTES

D-shaped hole 6x4.6 mm



The data herewith contained may change without notice and LF SpA cannot be held responsible for possible errors stated or resulting by the use of this document. All rights reserved. No part of this publication may be reproduced without written permission by LF SpA.



## Distributing Components, Spare Parts & Accessories in original quality worldwide

- 
- LF SpA HEADQUARTERS**  
via Voltri, 80 - 47522 Cesena (FC) ITALY  
Tel. +39 0547 34 11 11 - Fax +39 0547 34 11 10  
[www.lfricambi724.it](http://www.lfricambi724.it) - [info@lfricambi.it](mailto:info@lfricambi.it)  
Export Dept. Tel. +39 0547 34 11 50 - Fax +39 0547 34 11 55  
[www.lfspareparts724.com](http://www.lfspareparts724.com) - [export@lfspareparts.com](mailto:export@lfspareparts.com)
- LF SpA HOUSEHOLD COMPONENTS DIVISION**  
Via Padriciano, 99 - AREA Science Park - 34149 Trieste (TS) ITALY  
Tel. +39 0547 34 12 42 - Fax +39 0547 34 12 48  
[www.lfspareparts724.com](http://www.lfspareparts724.com) - [info@lfspareparts.com](mailto:info@lfspareparts.com)
- EPGC Sas FRANCE**  
13, Rue des Forts - 59960 Neuville en Ferrain  
Tel. +33 (0)3 20 25 06 21 - Fax +33 (0)3 20 25 34 12  
[www.epgc.com](http://www.epgc.com) - [epgc@epgc.com](mailto:epgc@epgc.com)
- LF GmbH GERMANY**  
Junkersstrasse, 3 - D-82178 Puchheim - München  
Tel. +49 89 89 45 78 66 - Fax +49 89 89 45 78 88  
[www.lfersatzteile724.de](http://www.lfersatzteile724.de) - [info@lfersatzteile.de](mailto:info@lfersatzteile.de)
- LF China REPUBLIC OF CHINA**  
Room 403, No.2, Huadu Mansion, Lane 422, Huanghua Rd.  
Minhang Dist. - 201103 Shanghai  
Tel. +86 (0)21 33 53 66 31 - Fax +86 (0)21 33 53 66 32  
[www.lfspareparts724.com](http://www.lfspareparts724.com) - [china@lfspareparts.com](mailto:china@lfspareparts.com)
- OOO LF RUSSIAN FEDERATION**  
Ul. Anatoliya Zhivova, 8 - office 1 - 123100 Moscow  
Tel./Fax +7 495 725 26 53  
[www.lfspareparts724.ru](http://www.lfspareparts724.ru) - [info@lfspareparts.ru](mailto:info@lfspareparts.ru)
- LF Repuestos Horeca S.L.U. SPAIN**  
Poligono Industrial Carpetania - C/Miguel Faraday, 8 - 28906 Getafe  
Tel. +34 91 477 91 00 - Fax +34 91 477 90 81  
[www.lfrepuestos-horeca724.es](http://www.lfrepuestos-horeca724.es) - [info@lfrepuestos.es](mailto:info@lfrepuestos.es)
- LF Scandinavia Aps - LF Spareparts S.p.A. DENMARK**  
Nupark, 51 - 7500 Holstebro  
Tel. +45 70 70 77 33  
[www.lfspareparts724.dk](http://www.lfspareparts724.dk) - [denmark@lfspareparts.dk](mailto:denmark@lfspareparts.dk)
- LF SpA Cesena (IT) Swiss Branch Steinhausen SWITZERLAND**  
Sennweidstrasse, 45 - CH-6312 Steinhausen  
Tel. +41 (0)41 760 15 80/1 - Fax +41 (0)41 760 15 85  
[www.lfersatzteile724.ch](http://www.lfersatzteile724.ch) - [info@lfersatzteile.ch](mailto:info@lfersatzteile.ch)
- LF Spare Parts Ltd. UNITED KINGDOM**  
A10a Lakeside Business Park, Broadway Lane  
South Cerney, Gloucestershire GL7 5XL  
Tel. +44 (0)1285 86 16 25 - Fax +44 (0)1285 86 39 49  
[www.lfspareparts724.co.uk](http://www.lfspareparts724.co.uk) - [info@lfspareparts.co.uk](mailto:info@lfspareparts.co.uk)
- LF Central Est Europe S.r.o. CZECH REPUBLIC**  
Antala Staska 1859/34  
14000 Praha 4 - KRC  
Tel. +420 730 156 910  
[www.lfspareparts724.cz](http://www.lfspareparts724.cz) - [info@lfspareparts.cz](mailto:info@lfspareparts.cz)
- LF SPARE PARTS INC. USA**  
Legal address:  
155 Office Plaza Dr - Suite A - Tallahassee, FL 32301  
Business/Mailing address:  
1100 South Tower, 225 Peachtree St., N.E. - Atlanta, GA 30303, USA  
Tel. +1-404-525-2600 - Fax +1-404-586-3528  
[www.lfspareparts724.us](http://www.lfspareparts724.us) - [info@lfspareparts.us](mailto:info@lfspareparts.us)  
Tel. West Coast and Midwest: 206-349-1525 Sauro  
Tel. East Coast and the Caribbean: 786-817-1764 Luis
- 
- AUSTRALIA AND NEW ZEALAND**  
[www.lfspareparts724.com](http://www.lfspareparts724.com)  
[andrea.calvio@lfspareparts.com](mailto:andrea.calvio@lfspareparts.com)
- AUSTRIA**  
[www.lfersatzteile724.at](http://www.lfersatzteile724.at)  
[info@lfersatzteile.at](mailto:info@lfersatzteile.at)
- BALKAN COUNTRIES**  
[www.lfspareparts724.com](http://www.lfspareparts724.com)  
[matija.ramov@lfspareparts.com](mailto:matija.ramov@lfspareparts.com)
- BALTIC COUNTRIES**  
[www.lfspareparts724.com](http://www.lfspareparts724.com)  
[inara.silina@lfspareparts.com](mailto:inara.silina@lfspareparts.com)
- LATIN AMERICA AND THE CARRIBEANS**  
[www.lfrepuestos-horeca724.es](http://www.lfrepuestos-horeca724.es)  
[export@lfrepuestos.es](mailto:export@lfrepuestos.es)
- POLAND**  
[www.lfspareparts724.pl](http://www.lfspareparts724.pl)  
[info@lfspareparts.pl](mailto:info@lfspareparts.pl)
- SOUTH KOREA**  
[www.lfspareparts724.com](http://www.lfspareparts724.com)  
[fabio.doni@lfspareparts.com](mailto:fabio.doni@lfspareparts.com)
- TURKEY**  
[www.lfyedekparca724.com](http://www.lfyedekparca724.com)  
[export@lfspareparts.com](mailto:export@lfspareparts.com)