



Spare parts for the professional sector:
Cooking equipment



Suitable for:

NUOVA SIMONELLI



This catalogue is automatically generated.
Therefore, the sequence of the items might
not be always shown at best.
Updates will be issued in case of additions
and/or amendments.

*Suitable **universal spare parts** may not be included*





Suitable for:

Suitable for:

Ball valves and accessories

3526699 BALL VALVE \varnothing 1/4" MF



NUOVA SIMONELLI 0900008

NUOVA SIMONELLI 09000018

3526704 BALL VALVE \varnothing 3/8" MF



NUOVA SIMONELLI 09000016

3526702 BALLCOCK VALVE \varnothing 3/8" FF



NUOVA SIMONELLI 09000022

Bearings

1199062 BEARING 6001 ZZ NSK
external \varnothing 28mm - internal \varnothing 12mm - thickness 8mm

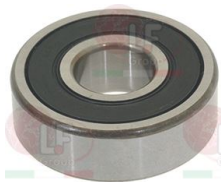


NUOVA SIMONELLI 17010034

D063017 BEARING 6001-2Z SKF



1063005 BEARING 6201 DDU NSK
external \varnothing 32mm - internal \varnothing 12mm - thickness 10mm



NUOVA SIMONELLI 15100044

3063005 BEARING 6202 DDU NSK
external \varnothing 35mm - internal \varnothing 15mm - thickness 11mm



NUOVA SIMONELLI 15010034

NUOVA SIMONELLI 15100086

D063050 BEARING 6202-2RS SKF
single box packaging



NUOVA SIMONELLI 15010034

NUOVA SIMONELLI 15100086

Circlips

- 1250023 RADIAL SEEGER RING \varnothing 5 mm**
 stainless steel - external \varnothing 11.3 - thickness 0.7
 UNI 7434 - DIN 6799



NUOVA SIMONELLI 08000015

Clamps

- 3449404 DOUBLE-WIRE CLAMP 8.8-9.3 - 100 PCS**
 for hoses \varnothing 8.8÷9.3 mm



NUOVA SIMONELLI 08000003

- 3449452 HOSE CLAMP 16-25**
 for pipes \varnothing 16÷25 mm
 made of stainless steel AISI 304
 height 9 mm and screw E7
 suitable for food industry



NUOVA SIMONELLI 00000133

Contact thermostats

- 5035435 CONTACT THERMOSTAT 140°C**
 for VENUS FAMILY



NUOVA SIMONELLI 40900007

- 3444246 CONTACT THERMOSTAT FOR BOILER 100°C**
 4 contacts 16A 250V
 for boiler



NUOVA SIMONELLI 18010789

- 1443055 CONTACT THERMOSTAT 125°C 16A 250V**



NUOVA SIMONELLI 09500002

- 1444535 CONTACT THERMOSTAT 135°C 16A 250V**
 with manual reset



NUOVA SIMONELLI 09500004

- 1443006 CONTACT THERMOSTAT 55°C 16A 250V**
 automatic reset



NUOVA SIMONELLI 09500006



Suitable for:

NUOVA SIMONELLI



Suitable for:

Contactors

3446561 CONTACTOR LOVATO BF0910A
 coil 9A 230V 50/60Hz 4.2Kw
 3 normally open contacts
 1 normally open auxiliary contact



NUOVA SIMONELLI 04200019

3446227 AUXILIARY CONTACT LOVATO G218
 10A
 1 contact NO
 1 contact NC



3446506 CONTACTOR LOVATO BF2510A
 25A 400V 12.5Kw
 coil 230V 50/60Hz
 3 normally open contacts
 1 normally open auxiliary contact



NUOVA SIMONELLI 04200070

3446227 AUXILIARY CONTACT LOVATO G218
 10A
 1 contact NO
 1 contact NC



3454034 CONTACTOR SIEMENS 3TG1001-0AC2
 coil 24V 50/60Hz
 3 normally open contacts
 1 normally closed auxiliary contact



NUOVA SIMONELLI 18010705

Electrical capacitors

3068016 CAPACITOR DUCATI ENERGIA 10µF
 450V 50/60Hz
 operating temperature -25 +85°C
 lead connector 6.35x0.8 mm
 ø 36xh58 mm



NUOVA SIMONELLI 04000043

NUOVA SIMONELLI 15050009

3068019 CAPACITOR DUCATI ENERGIA 12,5µF
 450V 50/60Hz
 operating temperature -25 +85°C
 lead connection 6.35x0.8 mm
 ø 36xh70 mm



NUOVA SIMONELLI 15010033



Suitable for:

3068024 CAPACITOR DUCATI ENERGIA 16 μ F
 450V 50/60Hz
 operating temperature -25 +85°C
 lead connector 6.35x0.8 mm
 \varnothing 36xh70 mm



NUOVA SIMONELLI 15050002

NUOVA SIMONELLI 15050023

Suitable for:

3068008 CAPACITOR DUCATI ENERGIA 5 μ F
 450V 50/60Hz
 operating temperature -25 +85°C
 lead connection 6.35x0.8 mm
 \varnothing 28xh55 mm



NUOVA SIMONELLI

3068010 CAPACITOR DUCATI ENERGIA 6,3 μ F
 450V 50/60Hz
 operating temperature -25 +85°C
 lead connection 6.35x0.8 mm
 \varnothing 32xh55 mm



NUOVA SIMONELLI 04000010

3068014 CAPACITOR DUCATI ENERGIA 8 μ F
 450V 50/60Hz
 operating temperature -25 +85°C
 lead connection 6.35x0.8 mm
 \varnothing 32xh55 mm



NUOVA SIMONELLI

3068080 CAPACITOR ELECTRICAL 10 μ F
 450V 50/60Hz - \varnothing 30xh71 mm



NUOVA SIMONELLI 04000043

NUOVA SIMONELLI 15050009

3068081 CAPACITOR ELECTRICAL 12.5 μ F
 450V 50/60Hz - \varnothing 35xh71 mm



NUOVA SIMONELLI 15010033

3068083 CAPACITOR ELECTRICAL 16 μ F
 450V 50/60Hz - \varnothing 35xh71 mm



NUOVA SIMONELLI 15050002

NUOVA SIMONELLI 15050023

3068096 CAPACITOR ELECTRICAL 5 μ F
 450V 50/60Hz - \varnothing 30xh51 mm



NUOVA SIMONELLI

3068097 CAPACITOR ELECTRICAL 6.3 μ F
 450V 50/60Hz - \varnothing 30xh51 mm



NUOVA SIMONELLI 04000010

3068079 CAPACITOR ELECTRICAL 8 μ F
 450V 50/60Hz - \varnothing 30xh71 mm



NUOVA SIMONELLI LF-3068014



Suitable for:

NUOVA SIMONELLI



Suitable for:

Fittings

3349317 ELBOW FITTING 1/4" M ϕ 6/4 NICKEL



NUOVA SIMONELLI 07300361

3349314 ELBOW FITTING 1/8" M ϕ 6/4 NICKEL



NUOVA SIMONELLI 07300375

3349342 NICHEL-PL.HOSE-END FITTING ϕ 1/4" M ϕ 7



NUOVA SIMONELLI

3349340 NICHEL-PL.T-FITTING ϕ 1/4" M-1/4" M-1/4" M



NUOVA SIMONELLI 07300051

3349355 NICHEL-PL.T-FITTING ϕ 1/8" F-1/8" F-1/8" F



NUOVA SIMONELLI 07300718

3349302 STRAIGHT FITT. 1/4" M ϕ 6/4 NICKEL-PLATED



NUOVA SIMONELLI 07300362

3349306 STRAIGHT FITT. 1/8" F ϕ 6/4 NICKEL-PLATED



NUOVA SIMONELLI 07300376

3349301 STRAIGHT FITT. 1/8" M ϕ 6/4 NICKEL-PLATED



NUOVA SIMONELLI 07300364

Fuses

3049070 QUICK ACTING FUSE ϕ 10x38 mm - 10 PCS
500V 4A



NUOVA SIMONELLI 16300112

3049033 QUICK ACTING FUSE ϕ 6.3x32 mm - 10 PCS
500V 6.3A



NUOVA SIMONELLI 18010958

Gas valves and accessories

3523001 VALVE M1 \varnothing 1/8"MF
 inlet \varnothing 1/8" M - outlet \varnothing 1/8" M
 thermocouple connection M8x1
 maximum gas inlet pressure 150 mbar
 room temperature 0÷80°C
 with thread under the button for ring nut



NUOVA SIMONELLI

3523006 NUT M12x1 FOR M1 VALVE



3182002 MAGNETIC UNIT SIT
 head \varnothing 15 mm - end piece \varnothing 10 mm - length 43 mm
 for valve SIT M1



3523007 RING NUT M12x1 FOR M1 VALVE



Gaskets and seals

3186010 ASBESTOS FREE FLAT GASKET \varnothing 54x42x2 mm



NUOVA SIMONELLI 18010760

1186409 FLAT PTFE GASKET \varnothing 68x55x3 mm
 for heating element



NUOVA SIMONELLI 02060015

Heating elements

3755022 HEATING ELEMENT 1150W 240V BOTTOM
 length 190 mm - width 310 mm



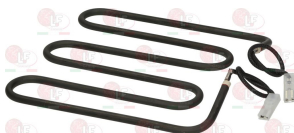
NUOVA SIMONELLI 15320004

3355308 HEATING ELEMENT 700W 230V TOP
 length 185 mm - width 180 mm
 complete with cables



NUOVA SIMONELLI 15320001

3755024 HEATING ELEMENT 850W 240V BOTTOM
 length 180 mm - width 175 mm
 with cables



NUOVA SIMONELLI 15320002



Suitable for:



Suitable for:

Hinges, catches and accessories

5029716 BRASS BRAKE HINGE PLATE
external dimensions 40x30x20 mm



NUOVA SIMONELLI 15320017

Hydraulic piping

1449682 SILICONE HOSE \varnothing 5x8 SHORE 60 - 10 m
alimentary



NUOVA SIMONELLI 11600002

Indicator lights

3221162 GREEN LAMP RECEPTACLE
head \varnothing 14.5 mm - hole \varnothing 10 mm



NUOVA SIMONELLI 18010610

3221097 INDICATOR LIGHT NEUTRAL 220V
head \varnothing 8 mm - 120°C



NUOVA SIMONELLI 18010606

1221007 INDICATOR LIGHT RED 230V
 \varnothing head 20 mm - \varnothing hole 10 mm
wire connection length 200 mm



NUOVA SIMONELLI 15080006

3221013 INDICATOR LIGHT RED 230V
mounting hole 22x30 mm - 105°C
universal application



NUOVA SIMONELLI 04200012

3221960 INDICATOR LIGHT WHITE 230V
mounting hole 22x30 mm - 125°C



NUOVA SIMONELLI 15320011



Suitable for:

3221128 LAMP RECEPTACLE GREEN
head 14x14 mm - \varnothing hole 11 mm



NUOVA SIMONELLI 18010771

3221126 INDICATOR LIGHT NEUTRAL 24V
head \varnothing 8 mm - 120°C



NUOVA SIMONELLI 18010788

3221127 ORANGE LAMP RECEPTACLE
head 14x14 mm - hole \varnothing 11 mm



NUOVA SIMONELLI 18010776

3221126 INDICATOR LIGHT NEUTRAL 24V
head \varnothing 8 mm - 120°C



NUOVA SIMONELLI 18010788

3221163 ORANGE LAMP RECEPTACLE
head \varnothing 15 mm - hole \varnothing 10 mm



NUOVA SIMONELLI 18010611

Suitable for:

3221097 INDICATOR LIGHT NEUTRAL 220V
head \varnothing 8 mm - 120°C



NUOVA SIMONELLI 18010606

3221097 INDICATOR LIGHT NEUTRAL 220V
head \varnothing 8 mm - 120°C



NUOVA SIMONELLI 18010606



Suitable for:



Suitable for:

Interference suppression filters

3160099 INTERFERENCE SUPPRES. FILTER F3CF71112F
0.47μF



NUOVA SIMONELLI 18010415

Ironmongery (screws,nuts,washers)

1528001 COUNTERSUNK FLAT HEAD SCREWS M4x10
slotted - stainless steel
UNI 6109 - DIN 963 - ISO 2009



NUOVA SIMONELLI

5048127 COUNTERSUNK FLAT HEAD SCREWS M4x12
hexagon socket - stainless steel
UNI 5933 - DIN 7991 - ISO 10642



NUOVA SIMONELLI 00000147

1528623 COUNTERSUNK FLAT HEAD SCREWS M4x6
cross recessed - stainless steel
UNI 7688 - DIN 965 - ISO 7046



NUOVA SIMONELLI 00000119

1528016 COUNTERSUNK FLAT HEAD SCREWS M6x16
slotted - stainless steel
UNI 6109 - DIN 963 - ISO 2009



NUOVA SIMONELLI 00300021

5015285 COUNTERSUNK FLAT HEAD SCREWS M6x16
hexagon socket - stainless steel
UNI 5933 - DIN 7991 - ISO 10642



NUOVA SIMONELLI 00000152

1528627 COUNTERSUNK FLAT HEAD SCREWS M8x20
hexagon socket - stainless steel
UNI 5933 - DIN 7991 - ISO 10642



NUOVA SIMONELLI

3528291 CROSS HEAD FLUSH SCREW M4x8
cross-shaped - st./steel
UNI 7688 -DIN 965 - ISO 7046



NUOVA SIMONELLI

1528042 CYLINDER HEAD SCREW M3x6
in zinc plated iron alloy - slotted
UNI 6107 - DIN 84 - ISO 1207



NUOVA SIMONELLI 00000134

Suitable for:

5055105 **CYLINDER HEAD SCREW M4x10**
stainless steel - cross recessed
UNI 7687 - DIN 7985 - ISO 7045



NUOVA SIMONELLI 00000175

Suitable for:

1528100 **CYLINDER HEAD SCREW M4x12**
stainless steel - cross cut
UNI 7687 - DIN 7985 - ISO 7045



NUOVA SIMONELLI

1528049 **CYLINDER HEAD SCREW M4x16**
stainless steel - with hexagon socket
UNI 5931 - DIN 912 - ISO 4762



NUOVA SIMONELLI 00000148

5055169 **CYLINDER HEAD SCREW M4x30**
stainless steel - with hexagon socket
UNI 5931 - DIN 912 - ISO 4762



NUOVA SIMONELLI 00000149

3528183 **CYLINDER HEAD SCREW M4x40**
stainless steel - cross recessed
UNI 7687 - DIN 7985 - ISO 7045



NUOVA SIMONELLI 00000042

NUOVA SIMONELLI 00000132

1528631 **CYLINDER HEAD SCREW M4x8**
stainless steel - cross recessed
UNI 7687 - DIN 7985 - ISO 7045



NUOVA SIMONELLI

5014713 **CYLINDER HEAD SCREW M5x16**
stainless steel - with hexagon socket
UNI 5931 - DIN 912 - ISO 4762



NUOVA SIMONELLI 00000142

NUOVA SIMONELLI 18010470

5055171 **CYLINDER HEAD SCREW M5x25**
stainless steel - with hexagon socket
UNI 5931 - DIN 912 - ISO 4762



NUOVA SIMONELLI 00000151

9528041 **CYLINDER HEAD SCREW M6x20**
stainless steel - with hexagon socket
UNI 5931 - DIN 912 - ISO 4762
ø head 10 mm - overall length 26 mm



NUOVA SIMONELLI 00000112

3528238 **FLAT WASHER M4**
internal/external ø 4.3/9 mm - thickness 0.8 mm
stainless steel - UNI 6592 - DIN 125 A - ISO 7089



NUOVA SIMONELLI 00000073



NUOVA SIMONELLI



Suitable for:

3528028 **HEXAGON HEAD SCREW M10x20**
stainless steel - UNI 5739 - DIN 933 - ISO 4017



NUOVA SIMONELLI 0000087

Suitable for:

1528511 **HEXAGON HEAD SCREW M5x25**
stainless steel - UNI 5739 - DIN 933 - ISO 4017



NUOVA SIMONELLI

5026407 **HEXAGON HEAD SCREW M5x35**
stainless steel - UNI 5739 - DIN 933 - ISO 4017



NUOVA SIMONELLI 0000002

1528009 **HEXAGON HEAD SCREW M6x12**
inox - UNI 5739 - DIN 933 - ISO 4017



NUOVA SIMONELLI

1184820 **HEXAGON HEAD SCREW M6x25**
stainless steel - UNI 5739 - DIN 933 - ISO 4017



NUOVA SIMONELLI 00000107

3528088 **HEXAGON HEAD SCREW M8x20**
stainless steel - UNI 5739 - DIN 933 - ISO 4017



NUOVA SIMONELLI 00000094

3528112 **HEXAGONAL HEAD SCREW M6x16**
st./steel - UNI 5739 - DIN 933 - ISO 4017



NUOVA SIMONELLI

3528134 **HEXAGONAL NUT HIGH M4**
stainless steel - UNI 5587 - ISO 4033



NUOVA SIMONELLI 00000054

3528137 **HEXAGONAL NUT HIGH M8**
stainless steel - UNI 5587 - ISO 4033



NUOVA SIMONELLI 00000056

5060610 **HEXAGONAL NUT MEDIUM M3**
stainless steel - UNI 5588 - DIN 934 - ISO 4032



NUOVA SIMONELLI 00000060

3528213 **HEXAGONAL NUT MID M5**
st./steel - UNI 5588 - DIN 934 - ISO 4032



NUOVA SIMONELLI 00000003

1348813 **HEXAGONAL NUT M4 MEDIUM**
stainless steel - UNI 5588 - DIN 934 - ISO 4032



NUOVA SIMONELLI

Suitable for:

1348041 HEXAGONAL SELF-LOCKING NUT M8
stainless steel - with built in nylon ring
UNI 7473 - DIN 982 - ISO 7040



NUOVA SIMONELLI 00300018

Suitable for:

1184006 LOW CYLINDER HEAD SCREW M4x12
stainless steel - with hexagon socket
UNI 9327 - DIN 7984



NUOVA SIMONELLI 00000089

NUOVA SIMONELLI 00000118

1184010 LOW CYLINDER HEAD SCREW M6x10
stainless steel - with hexagon socket
UNI 9327 - DIN 7984



NUOVA SIMONELLI 40000001

1528030 MID HEXAGONAL NUT M6
stainless steel - UNI 5588 - DIN 934 - ISO 4032



NUOVA SIMONELLI

1528062 SCREWS NO HEAD WITH HEX. SOCKET M4x30
stainless steel - flat end
UNI 5923 - DIN 913 - ISO 4026



NUOVA SIMONELLI 00000114

1528643 SCREWS NO HEAD WITH HEX. SOCKET M6x20
stainless steel - flat end
UNI 5923 - DIN 923 - ISO 4026



NUOVA SIMONELLI 00200013

3053140 SELF-LOCKING HEXAGON NUT M5
stainless steel - with nylon built-in ring
UNI 7473 - DIN 982 - ISO 7040



NUOVA SIMONELLI 00300023

3053163 SELF-LOCKING HEXAGON NUT M6
stainless steel - with nylon built-in ring
UNI 7473 - DIN 982 - ISO 7040



NUOVA SIMONELLI 00300020

1528061 ST. STEEL SCREW TSPTC M4x14 mm
slotted - stainless steel
UNI 6109 - DIN 963 - ISO 2009



NUOVA SIMONELLI 00300022

1348814 TOOTHED WASHER EXT. M4
internal/external \varnothing 4.3/8 mm - thickness 0.5 mm
stainless steel - UNI 8842 A - DIN 6798 A



NUOVA SIMONELLI 00000011

NUOVA SIMONELLI 18010291



Suitable for:

1186504 WASHER FLAT M10
internal/external \varnothing 10.5/20 mm - thickness 2 mm
stainless steel - UNI 6592 - DIN 125 A - ISO 7089



NUOVA SIMONELLI LF-1528010

Suitable for:

1186399 WASHER FLAT M16
internal/external \varnothing 17/30 mm - thickness 3 mm
in zinc plated iron alloy
UNI 6592 - DIN 125 A - ISO 7089



NUOVA SIMONELLI 00200011

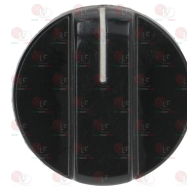
Knobs

5032392 KNOB BLACK \varnothing 20x50 mm
thread M6x13 mm



NUOVA SIMONELLI 15320012

3241331 KNOB BLACK \varnothing 45 mm
D-shaped hole 6x4.6 mm



NUOVA SIMONELLI 15320006

Microswitches, mechanical

3240123 MICROSWITCH ROLD VRSRB1DA1
16A 250V



NUOVA SIMONELLI 15000041

NUOVA SIMONELLI 15020003

3240410 MICROSWITCH 16(4)A 250V



NUOVA SIMONELLI 15030095

3240203 BUSHING DOOR MICROSWITCH
external \varnothing 10x15 mm



3240236 LIMIT SWITCH CONTROL



3240234 LIMIT SWITCH PIN



Suitable for:

3240233 MICROSWITCH FITTING M16x1.5 mm



Suitable for:

3250071 MICROSWITCH SPRING \varnothing 13x25 mm



3240235 RING NUT M16x1.5 mm



O-Ring and ORM gaskets

1786157 O-RING R18 EPDM
ring thickness 3.6 mm - internal \varnothing 23.0 mm



NUOVA SIMONELLI 4020006

1186610 O-RING R5 RED SILICONE
ring thickness 1.9 mm - internal \varnothing 5.7 mm



NUOVA SIMONELLI 02290016

1186791 O-RING R6 VITON
ring thickness 1.9 mm - internal \varnothing 7.2 mm



NUOVA SIMONELLI 02290018

NUOVA SIMONELLI 02290019

3243009 O-RING 0106 EPDM
ring thickness 1.78 mm - internal \varnothing 6.75 mm



NUOVA SIMONELLI 02280007

NUOVA SIMONELLI 18010162

1186422 O-RING 0108 EPDM
ring thickness 1.78 mm - internal \varnothing 8.73 mm



NUOVA SIMONELLI 02280010

1186902 O-RING 0108 RED SILICONE
ring thickness 1.78 mm - internal \varnothing 8.73 mm
for steam tap



NUOVA SIMONELLI 02000002

NUOVA SIMONELLI 02000005

1186304 O-RING 0112 EPDM
ring thickness 2.62 mm - internal \varnothing 9.92 mm



NUOVA SIMONELLI 18010048

1186626 O-RING 0114 EPDM
ring thickness 1.78 mm - internal \varnothing 11.11 mm



NUOVA SIMONELLI 02280032



NUOVA SIMONELLI



Suitable for:

1186805 O-RING 0115 EPDM
ring thickness 2.62 mm - internal \varnothing 11.91 mm



NUOVA SIMONELLI 02280004

Suitable for:

1186709 O-RING 0115 VITON
ring thickness 2.62 mm - internal \varnothing 11.91 mm



NUOVA SIMONELLI 02280016

3243086 O-RING 0117 EPDM
ring thickness 2.62 mm - internal \varnothing 13.10 mm



NUOVA SIMONELLI 02280011

NUOVA SIMONELLI 18010551

3186183 O-RING 0128 EPDM
ring thickness 2.62 mm - internal \varnothing 20.63 mm



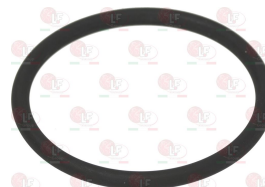
NUOVA SIMONELLI 18010322

1786140 O-RING 0147 RED SILICONE
ring thickness 3.53 mm - internal \varnothing 42.86 mm



NUOVA SIMONELLI 02290030

1786117 O-RING 0147 VITON
ring thickness 3.53 mm - internal \varnothing 42.86 mm
for coffee group



NUOVA SIMONELLI

1186198 O-RING 0161 EPDM
ring thickness 3.53 mm - internal \varnothing 57.15 mm



NUOVA SIMONELLI 17000032

1786287 O-RING 0162 BLACK VITON
ring thickness 3.53 mm - internal \varnothing 58.74 mm
for lever coffee group



NUOVA SIMONELLI 17010014

1186199 O-RING 0162 EPDM
ring thickness 3.53 mm - internal \varnothing 58.74 mm



NUOVA SIMONELLI 17000031

1186763 O-RING 0171 EPDM
ring thickness 3.53 mm - internal \varnothing 68.26 mm



NUOVA SIMONELLI 40200010

Suitable for:

1186163 O-RING 02010 EPDM
ring thickness 1.78 mm - internal \varnothing 2.57 mm



NUOVA SIMONELLI 15100179

Suitable for:

1186014 O-RING 02015 EPDM
ring thickness 1.78 mm - internal \varnothing 3.69 mm



NUOVA SIMONELLI 18010559

1186514 O-RING 02015 SILICON
ring thickness 1.78 mm - internal \varnothing 3.69 mm



NUOVA SIMONELLI 02280014

NUOVA SIMONELLI 2280014

1186421 O-RING 02018 EPDM
ring thickness 1.78 mm - internal \varnothing 4.48 mm



NUOVA SIMONELLI 18010555

1186362 O-RING 02021 EPDM
ring thickness 1.78 mm - internal \varnothing 5.28 mm



NUOVA SIMONELLI 02280005

1186611 O-RING 02025 RED SILICONE
ring thickness 1.78 mm - internal \varnothing 6.07 mm



NUOVA SIMONELLI

1186612 O-RING 02025 VITON
ring thickness 1.78 mm - internal \varnothing 6.07 mm



NUOVA SIMONELLI

1186411 O-RING 02031 EPDM
ring thickness 1.78 mm - internal \varnothing 7.66 mm



NUOVA SIMONELLI 02280001

1186352 O-RING 02050 EPDM
ring thickness 1.78 mm - internal \varnothing 12.42 mm



NUOVA SIMONELLI 18010006

1186366 O-RING 02050 RED SILICONE
ring thickness 1.78 mm - internal \varnothing 12.42 mm



NUOVA SIMONELLI 02000003

1186223 O-RING 02056 EPDM
ring thickness 1.78 mm - internal \varnothing 14.00 mm



NUOVA SIMONELLI 02280032

1186401 O-RING 02093 EPDM
ring thickness 1.78 mm - internal \varnothing 23.52 mm



NUOVA SIMONELLI 02280012



Suitable for:

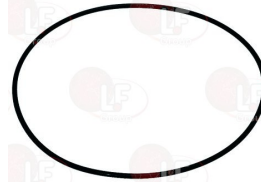
1186631 O-RING 02112 VITON
ring thickness 1.78 mm - internal \varnothing 28.30 mm



NUOVA SIMONELLI

Suitable for:

1186397 O-RING 02300 EPDM
ring thickness 1.78 mm - internal \varnothing 75.92 mm



NUOVA SIMONELLI 02280033

3186860 O-RING 03056 EPDM
ring thickness 2.62 mm - internal \varnothing 13.95 mm
EX OR 0118



NUOVA SIMONELLI 18010208

5033919 O-RING 03062 EPDM
ring thickness 2.62 mm - internal \varnothing 15.54 mm



NUOVA SIMONELLI 02280017

3186181 O-RING 03068 EPDM
ring thickness 2.62 mm - internal \varnothing 17.13 mm



NUOVA SIMONELLI 18010302

1186356 O-RING 03075 EPDM
ring thickness 2.62 mm - internal \varnothing 18.72 mm



NUOVA SIMONELLI 18010207

1186327 O-RING 03081 EPDM
ring thickness 2.62 mm - internal \varnothing 20.24 mm



NUOVA SIMONELLI

3186458 O-RING 03118 EPDM
ring thickness 2.62 mm - internal \varnothing 29.82 mm
for whipper base



NUOVA SIMONELLI

3186847 O-RING 03131 EPDM
ring thickness 2.62 mm - internal \varnothing 32.99 mm



NUOVA SIMONELLI 18010033

3160040 O-RING 03168 EPDM
ring thickness 2.62 mm - internal \varnothing 42.52 mm



NUOVA SIMONELLI 18010035



Suitable for:

Suitable for:

1186466 O-RING 03181 EPDM
ring thickness 2.62 mm - internal \varnothing 45.69 mm
for group flange



NUOVA SIMONELLI 18010342

3160044 O-RING 03187 EPDM
ring thickness 2.62 mm - internal \varnothing 47.30 mm



NUOVA SIMONELLI 18010148

NUOVA SIMONELLI 40200005

5055114 O-RING 03193 VITON
ring thickness 2.62 mm - internal \varnothing 48.89 mm



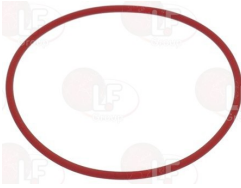
NUOVA SIMONELLI 02290025

1186625 O-RING 03281 EPDM
ring thickness 2.62 mm - internal \varnothing 71.12 mm



NUOVA SIMONELLI 02280015.EP

1186405 O-RING 03281 RED SILICONE
ring thickness 2.62 mm - internal \varnothing 71.12 mm



NUOVA SIMONELLI 02280015

1186790 O-RING 04118 GREEN VITON
ring thickness 3.53 mm - internal \varnothing 29.75 mm



NUOVA SIMONELLI 02290017

NUOVA SIMONELLI 2290017

1186655 O-RING 04131 EPDM
ring thickness 3.53 mm - internal \varnothing 32.93 mm



NUOVA SIMONELLI 02280009

NUOVA SIMONELLI 18000022

1186403 O-RING 04137 GREEN VITON
ring thickness 3.53 mm - internal \varnothing 34.52 mm
for coffee group \varnothing 44 mm



NUOVA SIMONELLI 02290020

3186271 O-RING 04312 EPDM
ring thickness 3.53 mm - internal \varnothing 78.97 mm



NUOVA SIMONELLI 18010613

3186014 O-RING 06225 EPDM \varnothing 67 mm
ring thickness 5.34 mm - internal \varnothing 56.52 mm



NUOVA SIMONELLI 18010746



Suitable for:

3160061 O-RING 06275 EPDM
ring thickness 5.34 mm - internal \varnothing 69.22 mm



NUOVA SIMONELLI 18010602

Suitable for:

1186435 O-RING 106 VITON
ring thickness 1.78 mm - internal \varnothing 6.75 mm



NUOVA SIMONELLI 17010010

1186073 OR O-RING 03062 SILICONE
ring thickness 2.62 mm - internal \varnothing 15.54 mm



NUOVA SIMONELLI 16300040

Radiant heating elements

3311083 RADIANT HEATING ELEMENT OCTAGON. \varnothing 250mm
2500W 230V
faston electrical connections - with cables
complete with power setting
for glass-ceramic hob



NUOVA SIMONELLI 05000168.3

NUOVA SIMONELLI 05000168.3VS

Relays

3351154 BASE OCTAL ES8 10A 400V
8 poles



NUOVA SIMONELLI 09000011

3351007 POWER RELAY FINDER 55.32.8.230.0040
230V 50/60Hz
2 exchange contacts 10A
with to test push-button + mechanic gauge



NUOVA SIMONELLI 15010055

3351004 POWER RELAY FINDER 56.32.8.230.0040
230V 50/60Hz
2 changeover contacts 12A



NUOVA SIMONELLI 04200044

3351021 POWER RELAY FINDER 62.82.8.230.0000
230V 50/60Hz
2 exchange contacts 16A



NUOVA SIMONELLI 04200046

Suitable for:

Suitable for:

3351032 POWER RELAY FINDER 66.82.8.230.0300
230V 50/60Hz
2 contacts NO 30A



NUOVA SIMONELLI 04200007

Solenoid valves

3120033 COIL PARKER ZB09 9W 24V 50/60Hz
width 34 mm - height 33 mm
length 43.5 mm



NUOVA SIMONELLI

3120034 CONNECTOR LARGE F-FITTING
for coils



NUOVA SIMONELLI

3120005 SOLEN. VALVE ELBI TYPE 329 1 WAY 180°
220/240V 50/60Hz - max. temperature 90°C
inlet 3/4" - outlet \varnothing 10.5 mm



NUOVA SIMONELLI 18010938

3120019 ADJUSTER FOR INLET ELBI BLACK
flow rate 5.5 L/min - tolerance +/- 15%



3120021 ADJUSTER FOR INLET ELBI BLACK
flow rate 12 L/min - tolerance +/- 15%



3120022 ADJUSTER FOR INLET ELBI BLACK
flow rate 16 L/min - tolerance +/- 15%



3120037 ADJUSTER FOR OUTLET ELBI GREEN
flow rate 0.25 L/min - tolerance +/- 25%



3120201 ADJUSTER FOR OUTLET ELBI GREY
flow rate 4.7 L/min - tolerance +/- 25%





Suitable for:

3120016 ADJUSTER FOR OUTLET ELBI NEUTRAL
flow rate 1.2 L/min - tolerance +/- 25%



3120015 ADJUSTER FOR OUTLET ELBI RED
flow rate 0.5 L/min - tolerance +/- 25%



3120202 ADJUSTER FOR OUTLET ELBI YELLOW
flow rate 0.35 L/min / tolerance +/- 25%



3120204 OUTLET ADJUSTER ELBI BLACK
flow rate 5.5 L/min - tolerance +/- 25%



3120505 SOLEN. VALVE ELBI TYPE 329 1 WAY 180°
24V 50/60Hz - max. temperature 90°C
inlet 3/4" - outlet ø 10.5 mm



NUOVA SIMONELLI 18010751

3120021 ADJUSTER FOR INLET ELBI BLACK
flow rate 12 L/min - tolerance +/- 15%



NUOVA SIMONELLI



Suitable for:

3120017 ADJUSTER FOR OUTLET ELBI ORANGE
flow rate 2.5 L/min - tolerance +/- 25%



3120203 ADJUSTER FOR OUTLET ELBI WHITE
flow rate 2 L/min - tolerance +/- 25%



3120000 FILTER FOR INLET SOLENOID VALVE ELBI



3120019 ADJUSTER FOR INLET ELBI BLACK
flow rate 5.5 L/min - tolerance +/- 15%



3120022 ADJUSTER FOR INLET ELBI BLACK
flow rate 16 L/min - tolerance +/- 15%





NUOVA SIMONELLI



Suitable for:

3120037 ADJUSTER FOR OUTLET ELBI GREEN
flow rate 0.25 L/min - tolerance +/- 25%



Suitable for:

3120201 ADJUSTER FOR OUTLET ELBI GREY
flow rate 4.7 L/min - tolerance +/- 25%



3120016 ADJUSTER FOR OUTLET ELBI NEUTRAL
flow rate 1.2 L/min - tolerance +/- 25%



3120017 ADJUSTER FOR OUTLET ELBI ORANGE
flow rate 2.5 L/min - tolerance +/- 25%



3120015 ADJUSTER FOR OUTLET ELBI RED
flow rate 0.5 L/min - tolerance +/- 25%



3120203 ADJUSTER FOR OUTLET ELBI WHITE
flow rate 2 L/min - tolerance +/- 25%



3120202 ADJUSTER FOR OUTLET ELBI YELLOW
flow rate 0.35 L/min / tolerance +/- 25%



3120000 FILTER FOR INLET SOLENOID VALVE ELBI



3120204 OUTLET ADJUSTER ELBI BLACK
flow rate 5.5 L/min - tolerance +/- 25%



3120007 SOLEN. VALVE ELBI TYPE 349 2 WAY 180°
220/240V 50/60Hz - max. temperature 90°C
inlet 3/4" - two outlets ø 10.5 mm



3120019 ADJUSTER FOR INLET ELBI BLACK
flow rate 5.5 L/min - tolerance +/- 15%





Suitable for:

3120021 ADJUSTER FOR INLET ELBI BLACK
flow rate 12 L/min - tolerance +/- 15%



NUOVA SIMONELLI



Suitable for:

3120022 ADJUSTER FOR INLET ELBI BLACK
flow rate 16 L/min - tolerance +/- 15%



3120037 ADJUSTER FOR OUTLET ELBI GREEN
flow rate 0.25 L/min - tolerance +/- 25%



3120201 ADJUSTER FOR OUTLET ELBI GREY
flow rate 4.7 L/min - tolerance +/- 25%



3120016 ADJUSTER FOR OUTLET ELBI NEUTRAL
flow rate 1.2 L/min - tolerance +/- 25%



3120017 ADJUSTER FOR OUTLET ELBI ORANGE
flow rate 2.5 L/min - tolerance +/- 25%



3120015 ADJUSTER FOR OUTLET ELBI RED
flow rate 0.5 L/min - tolerance +/- 25%



3120203 ADJUSTER FOR OUTLET ELBI WHITE
flow rate 2 L/min - tolerance +/- 25%



3120202 ADJUSTER FOR OUTLET ELBI YELLOW
flow rate 0.35 L/min / tolerance +/- 25%



3120000 FILTER FOR INLET SOLENOID VALVE ELBI



3120204 OUTLET ADJUSTER ELBI BLACK
flow rate 5.5 L/min - tolerance +/- 25%

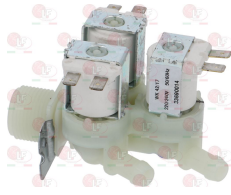




Suitable for:

Suitable for:

3120014 SOLENOID VALVE ELBI TYPE 369 3-WAY 180°
220/240V 50/60Hz - max temperature 90°C
inlet 3/4" - three outlets ø 10.5 mm



3120019 ADJUSTER FOR INLET ELBI BLACK
flow rate 5.5 L/min - tolerance +/- 15%



NUOVA SIMONELLI 18010079

3120021 ADJUSTER FOR INLET ELBI BLACK
flow rate 12 L/min - tolerance +/- 15%



3120022 ADJUSTER FOR INLET ELBI BLACK
flow rate 16 L/min - tolerance +/- 15%



3120037 ADJUSTER FOR OUTLET ELBI GREEN
flow rate 0.25 L/min - tolerance +/- 25%



3120201 ADJUSTER FOR OUTLET ELBI GREY
flow rate 4.7 L/min - tolerance +/- 25%



3120016 ADJUSTER FOR OUTLET ELBI NEUTRAL
flow rate 1.2 L/min - tolerance +/- 25%



3120017 ADJUSTER FOR OUTLET ELBI ORANGE
flow rate 2.5 L/min - tolerance +/- 25%



3120015 ADJUSTER FOR OUTLET ELBI RED
flow rate 0.5 L/min - tolerance +/- 25%



3120203 ADJUSTER FOR OUTLET ELBI WHITE
flow rate 2 L/min - tolerance +/- 25%



3120202 ADJUSTER FOR OUTLET ELBI YELLOW
flow rate 0.35 L/min / tolerance +/- 25%



3120000 FILTER FOR INLET SOLENOID VALVE ELBI





Suitable for:

3120204 **OUTLET ADJUSTER ELBI BLACK**
flow rate 5.5 L/min - tolerance +/- 25%



NUOVA SIMONELLI



Suitable for:

1120354 **2-WAY SOLENOID VALVE PARKER 230V 50/60Hz**
VE146NV - fittings \varnothing 1/4"FF - max 10 bar
VITON sealing - orifice \varnothing 2.5 mm
with coil ZB09 9W 220/230V 50/60Hz
fluid temperature -10°C +140°C



NUOVA SIMONELLI 04100012

NUOVA SIMONELLI 04100022

3120032 **COIL PARKER ZB09 9W 220/240V 50/60Hz**
width 34 mm - height 33 mm
length 43 mm



NUOVA SIMONELLI

Springs

3250001 **LEFTHAND SPRING \varnothing 20x42 mm**
for ELECTRIC PLATE all models
for SIRMAN ELECTRIC PLATE PD R/L/M/x upto 99
for SIRMAN ELECTRIC PLATE ELIO L/R/X upto 99
for SIRMAN ELECTRIC PLATE ELIO ECO upto 99



NUOVA SIMONELLI 15320007

3250029 **SPRING LH \varnothing 22x40 mm**
for PLATE PS24-36-PD50
for SIRMAN ELECTRIC PLATE PD R/L/M/x since 99
for SIRMAN ELECTRIC PLATE ELIO L/R/X since 99
for SIRMAN ELECTRIC PLATE PD ECO since 99
for SIRMAN ELECTRIC PLATE ELIO ECO since 99
for SIRMAN ELECTRIC PLATE PD POWER since 99



NUOVA SIMONELLI 15320007

NUOVA SIMONELLI 15320066

NUOVA SIMONELLI 15320072

3250028 **SPRING RH \varnothing 20x40 mm**
for PLATE PS24-36-PD50
for SIRMAN ELECTRIC PLATE PD R/L/M/x since 99
for SIRMAN ELECTRIC PLATE ELIO L/R/X since 99
for SIRMAN ELECTRIC PLATE PD ECO since 99
for SIRMAN ELECTRIC PLATE ELIO ECO since 99
for SIRMAN ELECTRIC PLATE PD POWER since 99



NUOVA SIMONELLI 15320008

NUOVA SIMONELLI 15320067

3250002 **SPRING RH \varnothing 20x42 mm**
for ELECTRIC PLATE all models
for SIRMAN ELECTRIC PLATE PD R/L/M/x upto 99
for SIRMAN ELECTRIC PLATE ELIO L/R/X upto 99
for SIRMAN ELECTRIC PLATE ELIO ECO upto 99



NUOVA SIMONELLI 15320008

Switches

3319154 BIPOLAR SWITCH BLACK 16A 250V
 16(4)A 250V - max. temperature 120°C
 with push-button cap - silk screen printing 0 - I
 mounting hole 22x30 mm



NUOVA SIMONELLI 16200027

NUOVA SIMONELLI 16300119

3319779 BLOCK CONNECTIONS BLACK 22x30 mm



3319780 BLOCK CONNECTION WHITE 22x30 mm



3319782 FRAME SAFETY 2 SIDES BLACK 22x30 mm



3319783 FRAME SAFETY 4 SIDES BLACK 22x30 mm



3319501 PUSH-BUTTON PROTECTION CAP
 external dimensions 29x36 mm
 for switches with mounting hole 22x30 mm



3319934 BIPOLAR SWITCH ORANGE 16A 250V
 16(4)A 250V - max. temperature 120°C
 with indicator light - silk screen printing 0 - I
 mounting hole 22x30 mm



NUOVA SIMONELLI 15010045

3319779 BLOCK CONNECTIONS BLACK 22x30 mm



3319780 BLOCK CONNECTION WHITE 22x30 mm



3319782 FRAME SAFETY 2 SIDES BLACK 22x30 mm





Suitable for:

3319783 FRAME SAFETY 4 SIDES BLACK 22x30 mm



NUOVA SIMONELLI



Suitable for:

3319501 PUSH-BUTTON PROTECTION CAP
external dimensions 29x36 mm
for switches with mounting hole 22x30 mm



3319016 BIPOLAR SWITCH RED 16A 250V
16(4)A 250V - max. temperature 120°C
with indicator light - silk screen printing 0 - I
mounting hole 22x30 mm



3319780 BLOCK CONNECTION WHITE 22x30 mm



NUOVA SIMONELLI 0420012

3319779 BLOCK CONNECTIONS BLACK 22x30 mm



3319782 FRAME SAFETY 2 SIDES BLACK 22x30 mm



3319783 FRAME SAFETY 4 SIDES BLACK 22x30 mm



3319501 PUSH-BUTTON PROTECTION CAP
external dimensions 29x36 mm
for switches with mounting hole 22x30 mm



3319019 BIPOLAR SWITCH RED 16A 250V
16(4)A 250V - max. temperature 120°C
with indicator light - mounting hole 22x30 mm



3319780 BLOCK CONNECTION WHITE 22x30 mm



NUOVA SIMONELLI 04200011

3319779 BLOCK CONNECTIONS BLACK 22x30 mm



3319782 FRAME SAFETY 2 SIDES BLACK 22x30 mm





NUOVA SIMONELLI



Suitable for:

3319783 FRAME SAFETY 4 SIDES BLACK 22x30 mm



Suitable for:

3319501 PUSH-BUTTON PROTECTION CAP
external dimensions 29x36 mm
for switches with mounting hole 22x30 mm

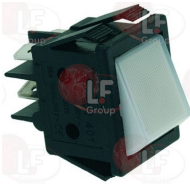


3319420 BIPOLAR SWITCH RED 16A 250V
with indicator light
mounting hole 22x27 mm



NUOVA SIMONELLI 04200030

3319251 BIPOLAR SWITCH WHITE 16A 250V
16(4)A 250V - max. temperature 120°C
with indicator light - mounting hole 22x30 mm



3319780 BLOCK CONNECTION WHITE 22x30 mm



NUOVA SIMONELLI 04200110

3319779 BLOCK CONNECTIONS BLACK 22x30 mm



3319782 FRAME SAFETY 2 SIDES BLACK 22x30 mm



3319783 FRAME SAFETY 4 SIDES BLACK 22x30 mm



3319501 PUSH-BUTTON PROTECTION CAP
external dimensions 29x36 mm
for switches with mounting hole 22x30 mm





Suitable for:

3319030 CHANGEOVER SWITCH 2 POLE GREEN 16A 250V
16(4)A 250V - max. temperature 120°C
with indicator light - mounting hole 22x30 mm



NUOVA SIMONELLI 18010053

3319779 BLOCK CONNECTIONS BLACK 22x30 mm



3319783 FRAME SAFETY 4 SIDES BLACK 22x30 mm



3319510 CONTACT SIEMENS 3SB3400-0B 10A 400V
1 contact NO



NUOVA SIMONELLI 18010774

3319948 RED BIPOLAR SWITCH 16A 250V
16(4)A 250V - with indicator light
max temperature 120°C
mounting hole \varnothing 25 mm



NUOVA SIMONELLI 04200039

Suitable for:

3319780 BLOCK CONNECTION WHITE 22x30 mm



3319782 FRAME SAFETY 2 SIDES BLACK 22x30 mm



3319501 PUSH-BUTTON PROTECTION CAP
external dimensions 29x36 mm
for switches with mounting hole 22x30 mm



3319151 SWITCH PROTECTION CAP
 \varnothing external 34 mm
for push-buttons with mounting hole \varnothing 25 mm



Suitable for:

Suitable for:

3319468 SWITCH 1-POLE BLACK 16A 250V
 16(4)A 250V
 silk-screen printing 0 - I
 max. temperature 120°C
 mounting hole 11x30 mm

3319780 BLOCK CONNECTION WHITE 22x30 mm



NUOVA SIMONELLI 16300121

3319779 BLOCK CONNECTIONS BLACK 22x30 mm

3319781 CONNECTION BLOCK BLACK 11x30 mm



1319936 PROTECTIVE SWITCH COVER
 external dimensions 36x18 mm
 for switch with mounting hole 11x30 mm



Telethermometers

3441011 TELE-THERMOMETER BLACK 56x25 mm 0-120°C
 plastic case
 capillary length 1500 mm
 bulb \varnothing 6x15 mm



NUOVA SIMONELLI 18010767

Terminal blocks

3247016 TERMINAL BLOCK 3-POLES FV273 40A 450V
 for cable max 6 mm²
 operating temperature 150°C
 nominal voltage 450 V

3247037 TERMINAL BLOCK 4-POLES FV173 40A 600V
 for cable max 6 mm²
 operating temperature 150°C
 nominal voltage 450 V



NUOVA SIMONELLI 04000310

NUOVA SIMONELLI 15320065



Suitable for:

Suitable for:

Thermocouples and accessories

3440051 THERMOCOUPLE SIT M8x1 32 cm.THREAD M8x1



NUOVA SIMONELLI 09600013

3440851 THERMOCOUPLE SIT M8x1 32 cm - 10 PCS. CONNECTOR M8x1



3440064 NUT FOR THERMOCOUPLE M8x1



Thermostats

3444008 KNOB BLACK ø 41 mm 0-90°C
D-shaped hole 6x4.6 mm
for thermostat IMIT



NUOVA SIMONELLI 18010388

3444514 THERMOSTAT SINGLE-PHASE 50-300°C
D-shaped pin ø 6x4.6 mm
capillary length 900 mm - 15A 230V
bulb ø 4x100 mm



NUOVA SIMONELLI 15320005

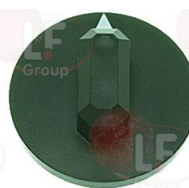
Timers

3446100 TIMER 15 MINUTES CD15
manually set mechanical timer
manually set cycle 15 minutes
max temperature 125°C
D-shaped pin ø 6x4.6 mm



NUOVA SIMONELLI

3241174 BLACK KNOB ø 44 mm
D-shaped hole 6x4.6 mm



3241173 BLACK KNOB ø 44 mm
D-shaped hole 6x4.6 mm





Suitable for:

Suitable for:

Tools

3394272 PLATES BRUSH 240 mm



NUOVA SIMONELLI 15320044

3394906 TELESCOPIC KIT \varnothing 30x165 mm
extension overall length 485 mm



NUOVA SIMONELLI

The data herewith contained may change without notice and LF SpA cannot be held responsible for possible errors stated or resulting by the use of this document. All rights reserved. No part of this publication may be reproduced without written permission by LF SpA.



Distributing Components, Spare Parts & Accessories in original quality worldwide

-
- LF SpA HEADQUARTERS**
via Voltri, 80 - 47522 Cesena (FC) ITALY
Tel. +39 0547 34 11 11 - Fax +39 0547 34 11 10
www.lfircambi724.it - info@lfircambi.it
Export Dept. Tel. +39 0547 34 11 50 - Fax +39 0547 34 11 55
www.lfspareparts724.com - export@lfspareparts.com
- LF SpA HOUSEHOLD COMPONENTS DIVISION**
Via Padriciano, 99 - AREA Science Park - 34149 Trieste (TS) ITALY
Tel. +39 0547 34 12 42 - Fax +39 0547 34 12 48
www.lfspareparts724.com - info@lfspareparts.com
- EPGC Sas FRANCE**
13, Rue des Forts - 59960 Neuville en Ferrain
Tel. +33 (0)3 20 25 06 21 - Fax +33 (0)3 20 25 34 12
www.epgc.com - epgc@epgc.com
- LF GmbH GERMANY**
Junkersstrasse, 3 - D-82178 Puchheim - München
Tel. +49 89 89 45 78 66 - Fax +49 89 89 45 78 88
www.lfersatzteile724.de - info@lfersatzteile.de
- LF China REPUBLIC OF CHINA**
Room 403, No.2, Huadu Mansion, Lane 422, Huanghua Rd.
Minhang Dist. - 201103 Shanghai
Tel. +86 (0)21 33 53 66 31 - Fax +86 (0)21 33 53 66 32
www.lfspareparts724.com - china@lfspareparts.com
- OOO LF RUSSIAN FEDERATION**
Ul. Anatoliya Zhivova, 8 - office 1 - 123100 Moscow
Tel./Fax +7 495 725 26 53
www.lfspareparts724.ru - info@lfspareparts.ru
- LF Repuestos Horeca S.L.U. SPAIN**
Poligono Industrial Carpetania - C/Miguel Faraday, 8 - 28906 Getafe
Tel. +34 91 477 91 00 - Fax +34 91 477 90 81
www.lfrepuestos-horeca724.es - info@lfrepuestos.es
- LF Scandinavia Aps - LF Spareparts S.p.A. DENMARK**
Nupark, 51 - 7500 Holstebro
Tel. +45 70 70 77 33
www.lfspareparts724.dk - denmark@lfspareparts.dk
- LF SpA Cesena (IT) Swiss Branch Steinhausen SWITZERLAND**
Sennweidstrasse, 45 - CH-6312 Steinhausen
Tel. +41 (0)41 760 15 80/1 - Fax +41 (0)41 760 15 85
www.lfersatzteile724.ch - info@lfersatzteile.ch
- LF Spare Parts Ltd. UNITED KINGDOM**
A10a Lakeside Business Park, Broadway Lane
South Cerney, Gloucestershire GL7 5XL
Tel. +44 (0)1285 86 16 25 - Fax +44 (0)1285 86 39 49
www.lfspareparts724.co.uk - info@lfspareparts.co.uk
- LF Central Est Europe S.r.o. CZECH REPUBLIC**
Antala Staska 1859/34
14000 Praha 4 - KRC
Tel. +420 730 156 910
www.lfspareparts724.cz - info@lfspareparts.cz
- LF SPARE PARTS INC. USA**
Legal address:
155 Office Plaza Dr - Suite A - Tallahassee, FL 32301
Business/Mailing address:
1100 South Tower, 225 Peachtree St., N.E. - Atlanta, GA 30303, USA
Tel. +1-404-525-2600 - Fax +1-404-586-3528
www.lfspareparts724.us - info@lfspareparts.us
Tel. West Coast and Midwest: 206-349-1525 Sauro
Tel. East Coast and the Caribbean: 786-817-1764 Luis
-
- AUSTRALIA AND NEW ZEALAND**
www.lfspareparts724.com
andrea.calvio@lfspareparts.com
- AUSTRIA**
www.lfersatzteile724.at
info@lfersatzteile.at
- BALKAN COUNTRIES**
www.lfspareparts724.com
matija.ramov@lfspareparts.com
- BALTIC COUNTRIES**
www.lfspareparts724.com
inara.silina@lfspareparts.com
- LATIN AMERICA AND THE CARRIBEANS**
www.lfrepuestos-horeca724.es
export@lfrepuestos.es
- POLAND**
www.lfspareparts724.pl
info@lfspareparts.pl
- SOUTH KOREA**
www.lfspareparts724.com
fabio.doni@lfspareparts.com
- TURKEY**
www.lfyedekparca724.com
export@lfspareparts.com