



Spare parts for the professional sector:
Cooking equipment



Suitable for:

LINCAR INOX



This catalogue is automatically generated.
Therefore, the sequence of the items might
not be always shown at best.
Updates will be issued in case of additions
and/or amendments.

Suitable universal spare parts may not be included





Suitable for:

LINCAR INOX



Suitable for:

Bulb sheathes

5063591 THERMOSTAT SHEATH M14x1.5 mm
bulb length 240 mm



LINCAR INOX 26080120

Burners, flame spreaders and accessories

3025838 BURNER C ø 73 mm 3Kw
for Pot stove gas (LINCAR INOX)



LINCAR INOX 38020210

3025863 BURNER C ø 73 mm 3Kw



LINCAR INOX 32310040

3025841 BURNER D ø 104 mm 4.5Kw
for Pot stove gas (LINCAR INOX)



LINCAR INOX 38020211

3025855 BURNER D ø 104 mm 4.5Kw



LINCAR INOX 32310050

3025844 BURNER E ø 128 mm 7.5Kw
for Pot stove gas (LINCAR INOX)



LINCAR INOX 38020212

3025858 BURNER E ø 128 mm 7.5Kw



LINCAR INOX 32310060

3025837 FLAME SPREADER "C" ø 73 mm 3Kw
for Pot stove gas (LINCAR INOX)



LINCAR INOX 38020220

3025838 BURNER C ø 73 mm 3Kw
for Pot stove gas (LINCAR INOX)

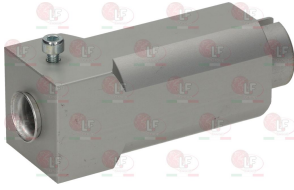


LINCAR INOX 38020210



Suitable for:

3025865 VENTURI BURNER C ø 73 mm 3Kw



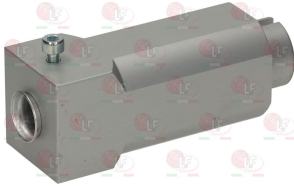
LINCAR INOX 32310010

3025864 FLAME SPREADER "C" ø 73 mm 3Kw



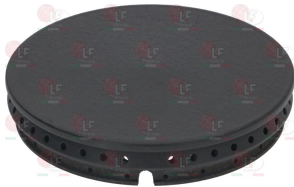
LINCAR INOX 32310070

3025865 VENTURI BURNER C ø 73 mm 3Kw



LINCAR INOX 32310010

**3025840 FLAME SPREADER "D" ø 104 mm 4,5Kw
for Pot stove gas (LINCAR INOX)**



LINCAR INOX 38020221

**3025841 BURNER D ø 104 mm 4.5Kw
for Pot stove gas (LINCAR INOX)**



LINCAR INOX 38020211

3025856 VENTURI BURNER D ø 104 mm 4.5Kw



LINCAR INOX 32310020

LINCAR INOX



Suitable for:

**3025839 VENTURI FOR FLAME SPREADER 73 mm 3Kw
for Pot stove gas (LINCAR INOX)**



LINCAR INOX 32020000

3025863 BURNER C ø 73 mm 3Kw



LINCAR INOX 32310040

3025867 BURNER "D-TC" ø 104 mm 4,5Kw



3025861 ELBOW FOR BURNER D



**3025842 VENTURI FOR FLAME SPREADER 104 mm 4.5Kw
for Pot stove gas (LINCAR INOX)**



LINCAR INOX M32020001

LINCAR INOX 32020001



Suitable for:

LINCAR INOX



3025854 FLAME SPREADER "D" ø 104 mm 4,5Kw



LINCAR INOX 32310080

Suitable for:

3025855 BURNER D ø 104 mm 4.5Kw



LINCAR INOX 32310050

3025856 VENTURI BURNER D ø 104 mm 4.5Kw



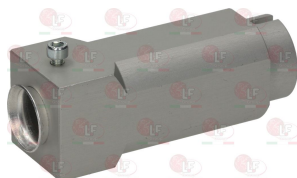
LINCAR INOX 32310020

3025857 FLAME SPREADER "E" ø 128 mm 7,5Kw



LINCAR INOX 32310090

3025859 VENTURI BURNER E ø 128 mm 7.5Kw



LINCAR INOX 32310030

**3025843 FLAME SPREADER "EL" ø 128 mm 7,5Kw
for Pot stove gas (LINCAR INOX)**



LINCAR INOX 38020222

**3025844 BURNER E ø 128 mm 7.5Kw
for Pot stove gas (LINCAR INOX)**



LINCAR INOX 38020212

3025858 BURNER E ø 128 mm 7.5Kw



LINCAR INOX 32310060

3025873 BURNER "EL" ø 128 mm 7,5Kw



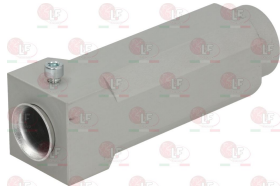
3025879 ELBOW FOR BURNER EL





Suitable for:

3025874 VENTURI BURNER EL \varnothing 128 mm 7.5Kw



LINCAR INOX



Suitable for:

3025845 VENTURI FOR FLAME SPREADER 128 mm 7.5Kw
for Pot stove gas (LINCAR INOX)



LINCAR INOX M3202002

3025865 VENTURI BURNER C \varnothing 73 mm 3Kw



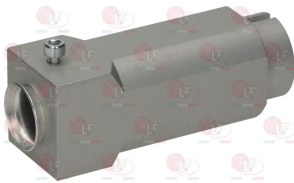
3025856 VENTURI BURNER D \varnothing 104 mm 4.5Kw



LINCAR INOX 32310010

LINCAR INOX 32310020

3025859 VENTURI BURNER E \varnothing 128 mm 7.5Kw



3025842 VENTURI FOR FLAME SPREADER 104 mm 4.5Kw
for Pot stove gas (LINCAR INOX)



LINCAR INOX 32310030

LINCAR INOX M3202001

LINCAR INOX 32020001

3025845 VENTURI FOR FLAME SPREADER 128 mm 7.5Kw
for Pot stove gas (LINCAR INOX)



3025839 VENTURI FOR FLAME SPREADER 73 mm 3Kw
for Pot stove gas (LINCAR INOX)



LINCAR INOX M3202002

LINCAR INOX 32020000

Cable glands

5089926 PRESSURE PLUG PG29



LINCAR INOX M40001217



Suitable for:

LINCAR INOX



Suitable for:

Cooking baskets and accessories

3055125 KNOB BLACK BAKELITE \varnothing 28x89 mm M8x1



LINCAR INOX 40041011

3055213 PASTA COOKER BASKET LH 165x145x230 mm
made of stainless steel

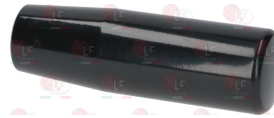


LINCAR INOX G5005

3155002 KNOB BLACK PLASTIC \varnothing 28x84 mm M8x1



3055125 KNOB BLACK BAKELITE \varnothing 28x89 mm M8x1



LINCAR INOX 40041011

3055204 PASTA COOKER BASKET RH 165x145x230 mm
made of stainless steel



LINCAR INOX G5006

3155002 KNOB BLACK PLASTIC \varnothing 28x84 mm M8x1



3055125 KNOB BLACK BAKELITE \varnothing 28x89 mm M8x1



LINCAR INOX 40041011



Drain taps and accessories

3356149 DRAIN TAP \varnothing 2" F TECNO
BRASS CAP - with swivel nut \varnothing 2" F



LINCAR INOX 40050025

3186242 ASBESTOS FREE FLAT GASKET \varnothing 61x46x2 mm
for drain tap \varnothing 2" old model



3356016 DRAIN NIPPLE \varnothing 2"x80 mm
in brass



3356012 ESCUTCHEON FOR DRAIN TAP \varnothing 2"



LINCAR INOX 40050026

5038365 ASBESTOS FREE FLAT GASKET \varnothing 60x50x2 mm
for drain tap \varnothing 2"



3356101 CAP FOR DRAIN TAP
for DRAIN TAP \varnothing 2" OLD MODEL



3242190 DRAIN TAP HANDGRIP
for DRAIN TAP \varnothing 2" OLD MODEL
AND FOR TECNO NEW MODEL



3179010 FITTINGS SEALING TAPE LOCTITE 55 - 50 m
length 50 mt
suitable to hot and cold drinking water, gas
replaces pastes, hemp and sealing tapes
it allows the repositioning of couplings
in compliance with the latest regulations
Drinking water (Italian certification by C.S.A.,
according to standard KTW and WRC approved)
gas - water IMQ-UNICIG.
compliant with UNI EN 51-2 class Arp
approved by DVGW and DIN 30660





Suitable for:

5015573 GASKET FLAT ASBE. FREE \varnothing 61x48x2 mm
for drain tap \varnothing 2"



3186241 O-RING 06212 VITON
ring thickness 5.34 mm - internal \varnothing 53.34 mm
for DRAIN TAP \varnothing 2" OLD MODEL AND
TECNO NEW MODEL



3180061 TAPE F. COUPLING SEALING LOCTITE 55-150m
length 150 metri
suitable for hot / cold drinking water. gas
replaces pastes, hemp and sealing tapes
it allows the correct replacement of fittings
compliant with the latest regulatory requirements
Drinking water (C.S.A. italian certified.
in line with KTW standard and WRC approved)
IMQ-UNICIG gas-water,
compliant with UNI EN 51-2 class Arp
DVGW and DIN 30660 approved



3356012 ESCUTCHEON FOR DRAIN TAP \varnothing 2"



LINCAR INOX 40050026

LINCAR INOX



Suitable for:

1180001 GREASE KLUBERSYNTH UH1 14-151 45 g
food safe grease for lubrication
of all friction points
ideal for water and steam taps
operating temperature $-45^{\circ}/+120^{\circ}$
beige color - NSF H1 certified
hot and cold water resistant
high anti-corrosion power
can replace vaseline



3356128 PIN \varnothing 5x30 mm
complete with blind nut



Electric hot plates

3311101 ELECTRIC HOT PLATE \varnothing 220 mm 2600W 400V
terminal block electric connections
with STAINLESS steel edge
for electric cooking top



LINCAR INOX 40000015

3311054 ELECTRIC HOT PLATE 2600W 400V
dimensions 220x220 mm
terminal block electric connections
with STAINLESS steel edge
for electric cooking top



LINCAR INOX 40000010

40C6244 ELECTRIC HOT PLATE 2600W 440V
dimensions 220x220 mm
screw terminal block
with STAINLESS steel rim



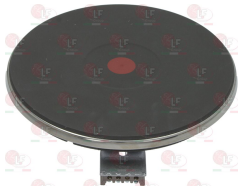
LINCAR INOX 40000021

3311063 ELECTRIC HOT PLATE 3000W 400V
dimensions 300x300 mm
terminal block electric connections
with STAINLESS steel edge
for electric cooking top



LINCAR INOX 40000002

5112629 ELECTRIC PLATE 2600W 440V \varnothing 220 mm
screw electric connections
stainless steel edge
for electric cooking top



LINCAR INOX 40000020

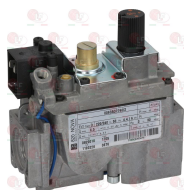
5009182 ELECTRIC PLATE 3000W 440V
size 300x300 mm
electrical screw fittings
with stainless STEEL edge
for pot stove electric



LINCAR INOX 40000022

Electrical gas valves and accessories

3526079 VALVE 820 NOVA \varnothing 1/2"FF
inlet \varnothing 1/2" F - outlet \varnothing 1/2" F
thermocouple fitting M9x1
maximum gas inlet pressure 60 mbar
outlet pressure setting range
3÷30 mbar
room temperature 0÷70°C
power supply 230V 50Hz



LINCAR INOX 40020115

3526270 VALVE 820 NOVA EXTENSION
D shaft \varnothing 10x8 mm





Suitable for:

3526098 COIL 220V
for VALVE 820 NOVA-824 NOVASIT-822 NOVA-826 NOVA



3526099 COIL 24V
for VALVE 820 NOVA-824 NOVASIT-822 NOVA-826 NOVA



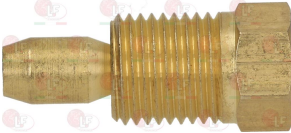
3526078 ELBOW FLANGE ϕ 3/4" F
with screws and OR
for valves SIT 820-Honeywell V4400-V4600-VR4605P



5047586 EXTENSION FOR VALVE 820 NOVA
D-shaped pin ϕ 10x8 mm



3020083 FITTING AND OLIVE ϕ 4 mm
thread M10x1 - h 24 mm



3526075 FLANGE STRAIGHT ϕ 1/2"
with screws and OR
for valves SIT 820-Honeywell V4400-V4600-VR4605P



LINCAR INOX



Suitable for:
2100054 COIL 220V 60Hz
for VALVE 820 NOVA-822 NOVA-828 NOVA



3526077 ELBOW FLANGE ϕ 1/2" F
with screws and OR
for valves SIT 820-Honeywell V4400-V4600-VR4605P



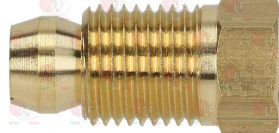
3526102 ELECTRIC COUPLING WITH CABLE
cable length 1000 mm - 3 wires
for VALVE 820 NOVA-824 NOVASIT-822 NOVA-826 NOVA



3241141 EXTENSION FOR 820 NOVA VALVE
D-shaped pin 10x8 mm



3020084 FITTING AND OLIVE ϕ 6 mm
thread M10x1 - h 10 mm



3526076 FLANGE STRAIGHT ϕ 3/4"
with screws and OR
for valves SIT 820-Honeywell V4400-V4600-VR4605P





Suitable for:

3526124 KNOB EXTENSION LENGTH 67 mm
for VALVE 820 NOVA-824 NOVASIT



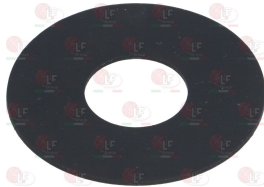
3241142 KNOB GASKET \varnothing 44 mm



3001008 PIEZO IGNITER
a \varnothing 14 mm hole is required for the assembly
faston M \varnothing 2.4 mm



5017951 PROTECTION RUBBER VALVE 820-824 NOVA
 \varnothing external 50 mm - \varnothing internal 20 mm
depth 1 mm



3526096 VALVE MICROSWITCH
maximum load 0.2 A
for VALVE ELETTROSIT-820 NOVA-824 NOVASIT



LINCAR INOX

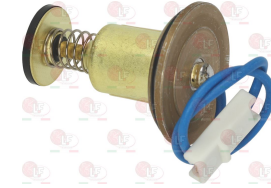


Suitable for:

5016719 KNOB EXTENSION LENGTH 86 mm
for VALVE 820 NOVA



3182008 MAGNETIC UNIT SIT
head \varnothing 35 mm - end piece \varnothing 20 mm - length 47 mm
for valve SIT NOVASIT 820



3526103 PROTECTING COVER
for VALVE 820 NOVA-824 NOVASIT-822 NOVA-826 NOVA



5012595 VALVE EXTENSION 820 NOVA
D-shaped pin \varnothing 6x4.6 mm



3526269 VALVE 820 NOVA EXTENSION
D shaft \varnothing 10x8 mm





Suitable for:

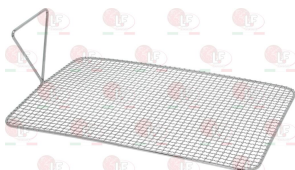
LINCAR INOX



Suitable for:

Fryer baskets and accessories

5089937 FALSE BOTTOM MESH COMPLETE 340x235 mm
height 103 mm
made of chrome-plated iron



LINCAR INOX M38040040

3055436 FRYER BASKET 300x110x120 mm
made of chrome plated iron



LINCAR INOX MG5020

3055466 FRYER BASKET HANDLE 140x40 mm
distance between holes 115 mm
of plastic



Gas burners

5077152 BURNER \varnothing 40x400 mm
overall length 435 mm
of stainless STEEL



LINCAR INOX 38020124

3023284 BURNER VERTICAL LH 300x55 mm
NICKEL PLATED



LINCAR INOX 38020128

3023285 BURNER VERTICAL RH 300x55 mm
NICKEL PLATED



LINCAR INOX 38020130

3023144 BURNER 575x225 mm
made of stainless steel



LINCAR INOX M38020140

LINCAR INOX 38020140

3352015 AERATION REGULATOR
internal \varnothing 18 mm - external \varnothing 20 mm
height 42 mm





Suitable for:

Suitable for:

**3023286 CENTRAL BURNER VERTICAL 300x55mm
NICKEL PLATED**



LINCAR INOX 38020129

Gas taps and accessories

**5072746 BY-PASS SCREW \varnothing 0.60 mm FOR MOD. 22
thread M6x0.5**



LINCAR INOX 40020215

**5030700 BY-PASS SCREW \varnothing 0.65 mm FOR MOD. 22
thread M6x0.5**



LINCAR INOX 40020216

**5016313 BY-PASS SCREW \varnothing 0.70 mm FOR MOD. 22
thread M6x0.5**



LINCAR INOX 40020217

**5069877 BY-PASS SCREW \varnothing 0.80 mm FOR MOD. 22
thread M6x0.5**



LINCAR INOX 40020219

**5034280 BY-PASS SCREW \varnothing 0.85 mm FOR MOD. 20/21
thread M5x0.5**



LINCAR INOX 40020202

**5050395 BY-PASS SCREW \varnothing 0.85 mm FOR MOD. 22
thread M6x0.5**



LINCAR INOX 40020211

**4002902 BY-PASS SCREW \varnothing 1.05 mm FOR MOD. 20/21
thread M5x0.5**



LINCAR INOX 40020200

**5038335 BY-PASS SCREW \varnothing 1.05 mm FOR MOD. 22
thread M6x0.5**



LINCAR INOX 40020212



Suitable for:

LINCAR INOX



5034281 BY-PASS SCREW \varnothing 1.10 mm FOR MOD. 20/21
thread M5x0.5



Suitable for:

4056742 BY-PASS SCREW \varnothing 1.10 mm FOR MOD. 22
thread M6x0.5



LINCAR INOX 40020203

3348202 GAS TAP 21/S
with pilot flame
fittings \varnothing M16x1.5mm
with by-pass \varnothing 0.75 mm
thermocouple connection M9x1
D-shaped pin \varnothing 8x6.5 mm
pin length 22/15 mm upper



LINCAR INOX 40020214

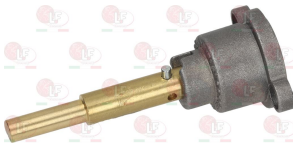
7102841 BODY FITTING TAP
 \varnothing pipe 10 mm
thread \varnothing 3/8" F - M16x1 mm
for taps PEL 20S-21S



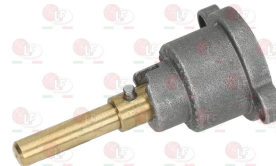
LINCAR INOX M40020032

LINCAR INOX 40020030

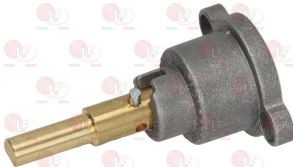
3348219 CAP WITH PIN \varnothing 6x4.6 mm
pin length 45/20 mm upper/lower
for model PEL 21



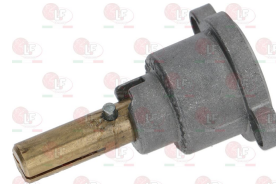
3348220 CAP WITH PIN \varnothing 6x4.6 mm
pin length 30/23 mm upper/lower
for model PEL 21



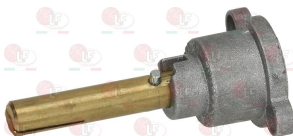
3348221 CAP WITH PIN \varnothing 6x4.6 mm
pin length 30/17,5 mm upper/lower
for model PEL 21



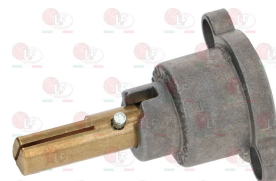
3348021 CAP WITH PIN \varnothing 8x6.5 mm
pin length 22 mm
for model PEL 21S



3348238 CAP WITH PIN \varnothing 8x6.5 mm
pin 35/15 mm upper/lower
for model PEL 21S



3348243 CAP WITH PIN \varnothing 8x6.5 mm
pin length 22/15 mm right/lef
for model PEL 21S



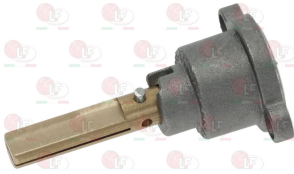


Suitable for:

LINCAR INOX



3348275 CAPWITH PIN \varnothing 8x6.5 mm
pin length 32/25 mm upper/lower
for model PEL 21S



Suitable for:

3348236 FLANGIA WITH PRESSURE FITTING \varnothing 16/10 mm
thread M16x1,5 mm - M10x1,25 mm
for model PEL 21S



3348058 MAGNET PROTECTION NUT M8x1
thread M18x1 mm
for model PEL 20-21-22



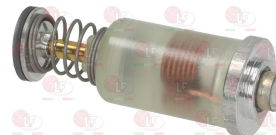
3348059 MAGNET PROTECTION NUT M9x1
thread M18x1mm
for model PEL 20-21-22



3182022 MAGNETIC GROUP PEL SMALL HEAD
head \varnothing 15.5 mm - end piece \varnothing 11.5 mm - length 44mm



3182011 MAGNETIC UNIT PEL SMALL HEAD
head \varnothing 15 mm - end piece \varnothing 11 mm - length 44 mm
for PEL tap models 20-21
for EGA tap model 25213
for JUNKERS tap model CH110



3348044 OLIVE FOR PIPE \varnothing 10 mm
 \varnothing ext. 12 mm - h 5 mm
for model PEL 20-21-24-25



3348036 OLIVE FOR PIPE \varnothing 4 mm
 \varnothing ext. 8 mm - h 8 mm
for model PEL 21-22-24-25



3348037 OLIVE FOR PIPE \varnothing 6 mm
 \varnothing ext. 8 mm - h 7 mm
for model PEL 21-22-24-25



3348043 PIPE FITTING \varnothing 10 mm
thread M16x1.5 mm - h 14 mm
for model PEL 20-21-24-25





Suitable for:

3348029 PIPE FITTING \varnothing 4 mm
thread M10x1 mm - h 11 mm
for model PEL 21-22-24-25



LINCAR INOX



Suitable for:

3020078 PIPE FITTING \varnothing 6 mm
thread M10x1 - h 10.5 mm



LINCAR INOX 40021603

5014757 PIPE FITTING \varnothing 6 mm
thread M10x1 mm - h 11 mm



3348206 GAS TAP 22S/O
with pilot flame
with horizontal flange
fittings M20x1.5 mm
thermocouple connection M9x1
D-shaped pin \varnothing 10x8 mm
pin length 25/17 mm lower

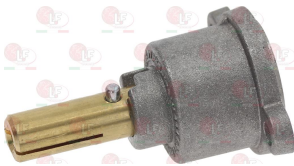


LINCAR INOX 40020003

3348229 CAP WITH PIN \varnothing 10 mm
pin length 31 mm
for model PEL 22S/O



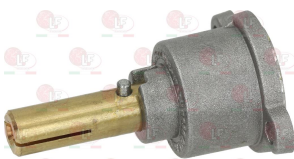
3348017 CAP WITH PIN \varnothing 10x8 mm
pin length 25/14 mm
for model PEL 22



3348245 CAP WITH PIN \varnothing 10x8 mm
pin length 34/26 mm upper/lower
for model PEL 22S



3348019 CAP WITH PIN \varnothing 10x9 mm
pin length 26 mm
for model PEL 22



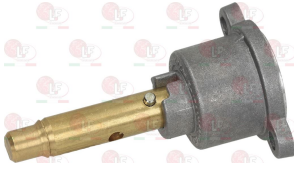
3348231 CAP WITH PIN \varnothing 6x4.6 mm
pin length 35/21 mm upper/lower
for model PEL 22





Suitable for:

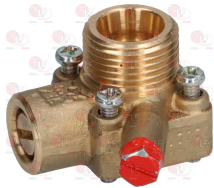
3348232 CAP WITH PIN \varnothing 8x6.5 mm
pin length 39/7 mm upper/lower
for model PEL 22



3348023 FLANGE HORIZONTAL \varnothing 12/10 mm
thread M20x1.5
for model PEL 22



3348024 FLANGE VERTICAL \varnothing 12/10 mm
thread M20x1.5
for model PEL 22



3348058 MAGNET PROTECTION NUT M8x1
thread M18x1 mm
for model PEL 20-21-22



3182009 MAGNETIC UNIT PEL BIG HEAD
head \varnothing 15.5 mm - end piece \varnothing 14 mm - length 44 mm
for PEL tap model 22-24



LINCAR INOX



Suitable for:

3348213 FLANGE \varnothing 12/10 mm
without adjustment
thread M20x1.5 mm
for model PEL 22S



3348025 FLANGE HORIZONTAL CONICAL \varnothing 12/10 mm
thread M20x1.5
for model PEL 22



3348214 FLANGIA WITH PRESSURE FITTING \varnothing 12/10 mm
thread M20x1.5 mm
for model PEL 22S



3348059 MAGNET PROTECTION NUT M9x1
thread M18x1mm
for model PEL 20-21-22



3182021 MAGNETIC UNIT PEL LARGE HEAD
head \varnothing 15.5 mm - end piece \varnothing 14 mm - length 44 mm





Suitable for:

3348038 OLIVE FOR PIPE \varnothing 10 mm
 \varnothing ext. 12 mm - h 14 mm
for model PEL 22-24-25



3348036 OLIVE FOR PIPE \varnothing 4 mm
 \varnothing ext. 8 mm - h 8 mm
for model PEL 21-22-24-25



3348230 PIN FOT GAS TAP \varnothing 6x4.6 mm
pin length 45/20 mm rh/lh
for model PEL 22



3348032 PIPE FITTING \varnothing 12 mm
thread M20x1.5 mm - h 15 mm
for model PEL 22-24-25



3020078 PIPE FITTING \varnothing 6 mm
thread M10x1 - h 10.5 mm



LINCAR INOX



Suitable for:

3020082 OLIVE FOR PIPE \varnothing 12 mm
 \varnothing ext. 14 mm - h 6 mm
for model PEL 22-24-25



3348037 OLIVE FOR PIPE \varnothing 6 mm
 \varnothing ext. 8 mm - h 7 mm
for model PEL 21-22-24-25



3348031 PIPE FITTING \varnothing 10 mm
thread M20x1.5 mm - h 15 mm
for model PEL 22-24-25



3348029 PIPE FITTING \varnothing 4 mm
thread M10x1 mm - h 11 mm
for model PEL 21-22-24-25



5014757 PIPE FITTING \varnothing 6 mm
thread M10x1 mm - h 11 mm





Suitable for:

3348297 VERTICAL FLANGE \varnothing 12/10 mm
without flow regulator
thread M20x1.5 mm
for model PEL 22



LINCAR INOX



Suitable for:

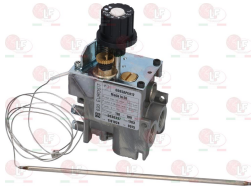
4004260 SCREW BY-PASS \varnothing 0.55 mm FOR MODEL 22
thread M6x0.5



LINCAR INOX 40020210

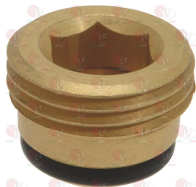
Gas valves and accessories

3526258 EUROSIT VALVE FOR FRYER 110÷190°C
with new knob
inlet \varnothing 3/8" F - outlet \varnothing 3/8" F
thermocouple connection M9x1
maximum gas inlet pressure 50 mbar
outlet pressure adjustment range
3÷18 mbar
ambient temperature 0÷120°C
capillary length 1050 mm
bulb \varnothing 4x200 mm
RoHS certificated



LINCAR INOX 40020133

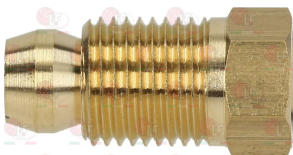
4056009 CAP FOR VALVE EUROSIT-MERTIK \varnothing 3/8"
with OR



3526260 CAP FOR VALVE EUROSIT \varnothing 3/8"
with OR



3020084 FITTING AND OLIVE \varnothing 6 mm
thread M10x1 - h 10 mm



3020083 FITTING AND OLIVE \varnothing 4 mm
thread M10x1 - h 24 mm



5050400 FITTING FOR OLIVE \varnothing 10 mm
thread \varnothing 3/8" M





Suitable for:

3526127 FLANGE FOR EXTENSION



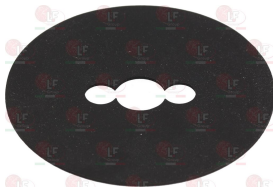
5050401 OLIVE FOR PIPE \varnothing 10 mm
external \varnothing 13 mm - height 8 mm



3001111 PIEZO IGNITER EUROSIT
M faston \varnothing 2.4 mm



3526123 RUBBER PROTECTION FOR EUROSIT VALVE



3526146 VALVE 630 EUROSIT FRY TOP 40÷250°C
inlet \varnothing 3/8" F - outlet \varnothing 3/8" F
thermocouple connection M9x1
maximum gas inlet pressure 50 mbar
outlet pressure calibration range
3÷18 mbar
ambient temperature 0÷120°C
capillary length 1050 mm
bulb \varnothing 4x72 mm



LINCAR INOX



Suitable for:

5021481 GAS OUTLET VALVE FITTING
thread \varnothing 3/8" M - M16x1 mm



3020082 OLIVE FOR PIPE \varnothing 12 mm
 \varnothing ext. 14 mm - h 6 mm
for model PEL 22-24-25



3020079 PIPE FITTING \varnothing 12 mm
thread \varnothing 3/8" M - h 20 mm



3526260 CAP FOR VALVE EUROSIT \varnothing 3/8"
with OR



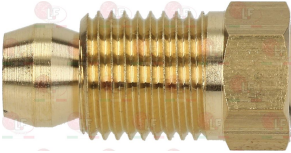


Suitable for:

4056009 CAP FOR VALVE EUROSIT-MERTIK \varnothing 3/8"
with OR



3020084 FITTING AND OLIVE \varnothing 6 mm
thread M10x1 - h 10 mm



3526127 FLANGE FOR EXTENSION



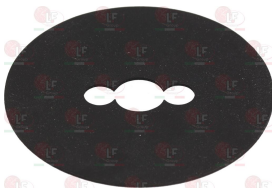
5050401 OLIVE FOR PIPE \varnothing 10 mm
external \varnothing 13 mm - height 8 mm



3001111 PIEZO IGNITER EUROSIT
M faston \varnothing 2.4 mm



3526123 RUBBER PROTECTION FOR EUROSIT VALVE



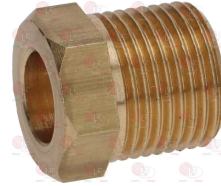
LINCAR INOX

Suitable for:

3020083 FITTING AND OLIVE \varnothing 4 mm
thread M10x1 - h 24 mm



5050400 FITTING FOR OLIVE \varnothing 10 mm
thread \varnothing 3/8" M



5021481 GAS OUTLET VALVE FITTING
thread \varnothing 3/8" M - M16x1 mm



3020082 OLIVE FOR PIPE \varnothing 12 mm
 \varnothing ext. 14 mm - h 6 mm
for model PEL 22-24-25



3020079 PIPE FITTING \varnothing 12 mm
thread \varnothing 3/8" M - h 20 mm





Suitable for:

LINCAR INOX



3526130 VALVE 630 EUROSIT OVEN 100÷340°C
 inlet \varnothing 3/8" F - outlet \varnothing 3/8" F
 thermocouple connection M9x1
 maximum gas inlet pressure 50 mbar
 outlet pressure adjustment range
 3÷18 mbar
 ambient temperature 0÷120°C
 capillary length 1050 mm
 bulb \varnothing 4x72 mm



LINCAR INOX 40020110

4056009 CAP FOR VALVE EUROSIT-MERTIK \varnothing 3/8"
 with OR



Suitable for:

3526260 CAP FOR VALVE EUROSIT \varnothing 3/8"
 with OR

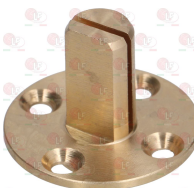


4056009 CAP FOR VALVE EUROSIT-MERTIK \varnothing 3/8"
 with OR

3526129 CLASP \varnothing 3x14 mm
 UNI 6873 - DIN 1481 - ISO 8752



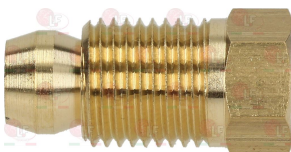
3526677 EXTENSION FOR EUROSIT VALVE
 D-shaped pin \varnothing 10x8 mm



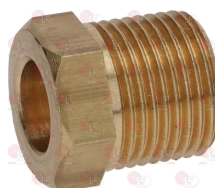
3020083 FITTING AND OLIVE \varnothing 4 mm
 thread M10x1 - h 24 mm



3020084 FITTING AND OLIVE \varnothing 6 mm
 thread M10x1 - h 10 mm



5050400 FITTING FOR OLIVE \varnothing 10 mm
 thread \varnothing 3/8" M



3526127 FLANGE FOR EXTENSION



5021481 GAS OUTLET VALVE FITTING
 thread \varnothing 3/8" M - M16x1 mm





Suitable for:

3526128 **KNOB EXTENSION LENGTH 34 mm**
D-shaped pin \varnothing 8x6.5 mm



LINCAR INOX



Suitable for:

3526125 **KNOB EXTENSION LENGTH 44 mm**
D-shaped pin \varnothing 8x6.5 mm



5050401 **OLIVE FOR PIPE \varnothing 10 mm**
external \varnothing 13 mm - height 8 mm



3020082 **OLIVE FOR PIPE \varnothing 12 mm**
 \varnothing ext. 14 mm - h 6 mm
for model PEL 22-24-25



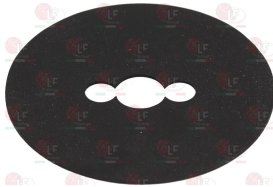
3001111 **PIEZO IGNITER EUROSIT**
M faston \varnothing 2.4 mm



3020079 **PIPE FITTING \varnothing 12 mm**
thread \varnothing 3/8" M - h 20 mm



3526123 **RUBBER PROTECTION FOR EUROSIT VALVE**



3526139 **VALVE 630 EUROSIT OVEN 80÷320°C**
inlet \varnothing 3/8" F - outlet \varnothing 3/8" F
thermocouple connection M9x1
maximum gas inlet pressure 50 mbar
outlet pressure adjustment range
3÷18 mbar
capillary length 1000 mm
bulb \varnothing 4x72 mm



3526260 **CAP FOR VALVE EUROSIT \varnothing 3/8"**
with OR



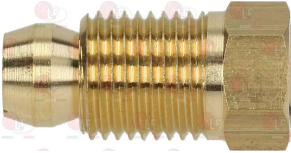


Suitable for:

4056009 CAP FOR VALVE EUROSIT-MERTIK ϕ 3/8"
with OR



3020084 FITTING AND OLIVE ϕ 6 mm
thread M10x1 - h 10 mm



3526127 FLANGE FOR EXTENSION



3526121 KNOB EXTENSION LENGTH 62 mm
D shaft ϕ 8x6.5 mm



3020082 OLIVE FOR PIPE ϕ 12 mm
 ϕ ext. 14 mm - h 6 mm
for model PEL 22-24-25



3020079 PIPE FITTING ϕ 12 mm
thread ϕ 3/8"M - h 20 mm



LINCAR INOX



Suitable for:

3020083 FITTING AND OLIVE ϕ 4 mm
thread M10x1 - h 24 mm



5050400 FITTING FOR OLIVE ϕ 10 mm
thread ϕ 3/8"M



5021481 GAS OUTLET VALVE FITTING
thread ϕ 3/8"M - M16x1 mm



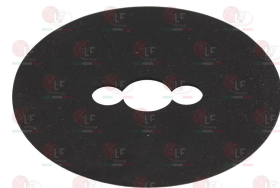
5050401 OLIVE FOR PIPE ϕ 10 mm
external ϕ 13 mm - height 8 mm



3001111 PIEZO IGNITER EUROSIT
M faston ϕ 2.4 mm



3526123 RUBBER PROTECTION FOR EUROSIT VALVE





Gaskets for oven door

- 5078761 DOOR GASKET FOR OVEN 315 mm**
of silicone elastomer
with fastening clips
profile dimensions 9x10 mm
BLACK COLOUR



LINCAR INOX 38040301

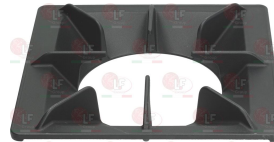
Grids for kitchen

- 3195006 GRID FOR SMOKE OUTLET 365x57 mm**
for Pot stove gas (LINCAR INOX)



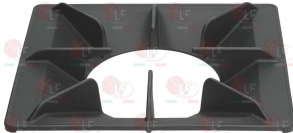
LINCAR INOX 34040004

- 3195004 GRID 380x370 mm**
for Pot stove gas (LINCAR INOX) - Series 900



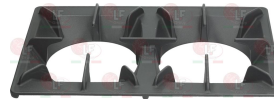
LINCAR INOX 34040001

- 3195003 GRID 430x370 mm**
for Pot stove gas (LINCAR INOX) - Series 900



LINCAR INOX 34040000

- 3195005 GRID 565x380 mm**
for Pot stove gas (LINCAR INOX) - Series 700



LINCAR INOX 34040002

Handles

- 5088677 DOOR HANDLE BLUE 655 mm**
distance betw. holes 620 mm - fastening holes M5



LINCAR INOX M38040110



Suitable for:

LINCAR INOX



Suitable for:

Heating elements

3755858 HEATING ELEMENT 12000W 230/400V
length 325 mm - width 180 mm
fitting M54x1.5 mm - complete with cables
complete with O-rings
with 2 holes for bulb



LINCAR INOX 38000230

3186601 O-RING 04200 EPDM
ring thickness 3.53 mm - internal \varnothing 50.39 mm



3186697 O-RING 0159 EPDM
ring thickness 3.53 mm - internal \varnothing 55.56 mm



3755652 RING NUT 1"-3/4" FOR HEATING ELEMENT



LINCAR INOX 38000231

3855055 HEATING ELEMENT 1800W 230V
length 430 mm - width 75 mm
height 78 mm
for Fry top electric (LINCAR INOX) - Series 700



LINCAR INOX 38000211

3755487 HEATING ELEMENT 1840W 230V
length 280 mm - width 70 mm
fittings \varnothing 1/4"
for Pasta cooker electric (LINCAR INOX)
Series 700



LINCAR INOX 38000207

LINCAR INOX 38000234

3855054 HEATING ELEMENT 2300W 230V
length 630 mm - width 100 mm
height 75 mm
for Fry top electric (LINCAR INOX) - Series 900



LINCAR INOX M38000210

LINCAR INOX 38000210

5094132 HEATING ELEMENT 2500W 230V
length 365 mm - width 105 mm
fittings \varnothing 1/4"



LINCAR INOX M38000270

LINCAR INOX 38000270



Suitable for:

3755077 HEATING ELEMENT 2520W 220V
length 445 mm - width 65 mm
fittings \varnothing 1/4" mm



LINCAR INOX 38000235

Suitable for:

3855052 HEATING ELEMENT 2700W 230V
length 495 mm - width 615 mm
flange 160x22 mm
for Oven under cooktop electric (LINCAR INOX)



LINCAR INOX 38000205

5085848 HEATING ELEMENT 2700W 254V
length 495 mm - width 615 mm
flange 160x22 mm - complete with cables



LINCAR INOX 38000215

3855059 HEATING ELEMENT 2770W 230V
length 450 mm - width 70 mm
fittings M12x1 mm
for Pasta cooker electric (LINCAR INOX)
Series 900



LINCAR INOX 38000208

LINCAR INOX 38000235

5023656 HEATING ELEMENT 2900W 230V
length 305 mm - width 215 mm
height 90 mm



LINCAR INOX 38000248

5091552 HEATING ELEMENT 2900W 254V
length 310 mm - width 200 mm
height 80 mm



LINCAR INOX M38000220

3755857 HEATING ELEMENT 7000W 230/400V
length 325 mm - width 105 mm
fitting M54x1.5 mm - complete with cables
complete with O-rings
with 2 holes for bulb



LINCAR INOX 3800229

3186697 O-RING 0159 EPDM
ring thickness 3.53 mm - internal \varnothing 55.56 mm



3186601 O-RING 04200 EPDM
ring thickness 3.53 mm - internal \varnothing 50.39 mm



3755652 RING NUT 1"-3/4" FOR HEATING ELEMENT



LINCAR INOX 38000231



Suitable for:

LINCAR INOX



5038672 HEATING ELEMENT 9000W 230V
immersed depth 550 mm
flange external \varnothing 63 mm - with bulb holder sheath



LINCAR INOX 38000267

Suitable for:

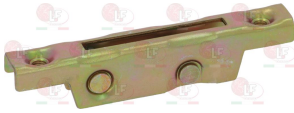
3755652 RING NUT 1"-3/4" FOR HEATING ELEMENT



LINCAR INOX 38000231

Hinges, catches and accessories

3053003 DOOR HINGE ROLL HOLDER
mounting distance 95 mm - overall length 118
height 23 mm



LINCAR INOX 40040210

3053007 LEFTHAND DOOR HINGE FOR OVEN
mounting distance 175 mm - overall length 205
height 160 mm

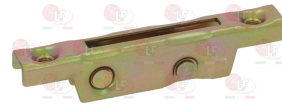


LINCAR INOX 40040201

3053234 HINGE COVER
mounting distance 95 mm - dimensions 124x20 mm



3053003 DOOR HINGE ROLL HOLDER
mounting distance 95 mm - overall length 118
height 23 mm



LINCAR INOX 40040210

3053299 HINGE COVER
mounting distance 77 mm - dimensions 129x26 mm



3053006 RIGHTHAND DOOR HINGE FOR OVEN
mounting distance 175 mm - overall length 205
height 160 mm



LINCAR INOX 40040200

3053003 DOOR HINGE ROLL HOLDER
mounting distance 95 mm - overall length 118
height 23 mm



LINCAR INOX 40040210



Suitable for:

3053234 HINGE COVER
mounting distance 95 mm - dimensions 124x20 mm



LINCAR INOX



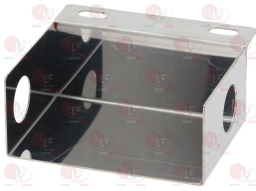
Suitable for:

3053299 HINGE COVER
mounting distance 77 mm - dimensions 129x26 mm



Ignitors

5085905 IGNITER SUPPORT BRACKET
external dimensions 95x85x40 mm



LINCAR INOX 26004909

3001029 PIEZO IGNITER
a \varnothing 22 mm hole is needed for the assembly
faston M \varnothing 2.4 mm
for SNACK SERIES



LINCAR INOX 40010000

Indicator lights

5080857 INDICATOR LIGHT GREEN 250V
head \varnothing 10 mm - 150°C
wire connection length 250 mm



LINCAR INOX 40001506

5080856 INDICATOR LIGHT RED 250V
head \varnothing 10 mm - 150°C
wire connection length 250 mm



LINCAR INOX 40001505

Interference suppression filters

5079554 INTERFERENCE SUPPRES. FILTER 0,1 μ F 275V



LINCAR INOX 40000610

Knobs

5085844 HANDLE RED \varnothing 76 mm 0-1-2-3-4-5-6
D-shaped hole 6x4,6 mm



LINCAR INOX 36050030

5089934 HANDLE RED \varnothing 76 mm 140-185°C
D-shaped hole 6x4,6 mm



LINCAR INOX M36050032



LINCAR INOX



Suitable for:

5085847 HANDLE RED \varnothing 76 mm 50-300°C
D-shaped hole 6x4,6 mm



LINCAR INOX 36050033

Suitable for:

5080855 INDICATOR MARK BLUE FLAMES \varnothing 19 mm



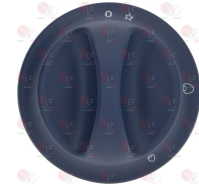
LINCAR INOX 32040000

3541018 KNOB BLUE \varnothing 76 mm SERIGRAFATA
D.shaped hole 10x8 mm



LINCAR INOX 36050005

3541017 KNOB BLUE \varnothing 76 mm SILK SCREEN PRINTING
D.shaped hole 8x6-5 mm



LINCAR INOX M36050004

LINCAR INOX 36050004

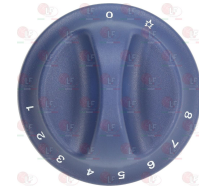
3541019 KNOB BLUE \varnothing 76 mm 0-1-2-3-4-5-6-7
D.shaped hole 10x8 mm



LINCAR INOX M36050010

LINCAR INOX 36050010

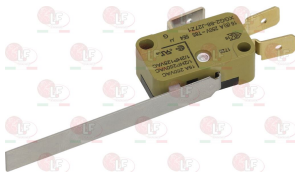
3541020 KNOB BLUE \varnothing 76 mm 0-1-2-3-4-5-6-7-8
D.shaped hole 8x6.5 mm



LINCAR INOX 36050011

Microswitches, mechanical

5089936 MICROSWITCH SAIA-BURGESS
mod. XGG2-88-J27Z1
16A 250V - lever 60x7 mm



LINCAR INOX M40001600

Nozzles

5000530 GAS JET M10x1 \varnothing 1.15 mm



LINCAR INOX 38023006

5015403 GAS JET M10x1 \varnothing 1.40 mm



LINCAR INOX 38023002



Suitable for:

Suitable for:

5015402 GAS JET M10x1 ø 1.75 mm

5012585 GAS JET M10x1 ø 1.85 mm



LINCAR INOX 38023008

LINCAR INOX 38023012

5000531 GAS JET M10x1 ø 1.95 mm

5012584 GAS JET M10x1 ø 2.00 mm



LINCAR INOX 38023011

LINCAR INOX 38023009

5021507 GAS JET M10x1 ø 2.20 mm

3500045 GAS JET M9x1 ø 1.20 mm



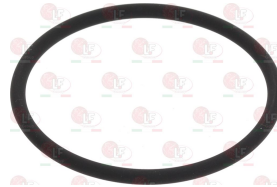
LINCAR INOX 38023005

LINCAR INOX 40021420

O-Ring and ORM gaskets

5079552 ORM GASKET 0500-35 NBR
ring thickness 3,53 mm - internal ø 50 mm

5079553 ORM GASKET 0550-35 NBR
ring thickness 3.53 mm - internal ø 55 mm



LINCAR INOX 40040600

LINCAR INOX 40040601

Pilot burners and accessories

3020101 BRACKET CLAMP 2 POSITIONS FOR PILOT SIT

3020085 FITTING FOR SPARKING PLUG FIXING ø 7 mm
thread M10x1 - h 11 mm



LINCAR INOX M40040405

LINCAR INOX 38024012

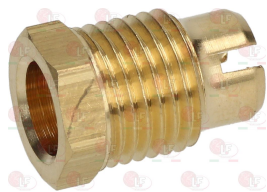


Suitable for:

LINCAR INOX



**3020200 FITTING FOR THERMOCOUPLE \varnothing 6.5 mm
thread M10x1**



LINCAR INOX 38024013

Suitable for:

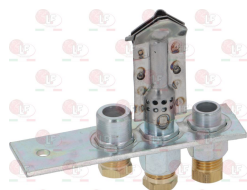
**3020112 OLIVE FOR PIPE \varnothing 6 mm
 \varnothing ext. 8 mm - h 9 mm**



LINCAR INOX M40021125

LINCAR INOX 40021125

3020011 PILOT BURNER POLIDORO 3 FLAMES
without sparking plug, gas jet
with pipe fitting and pilot pipe olive
with thermocouple connection
with sparking plug fitting



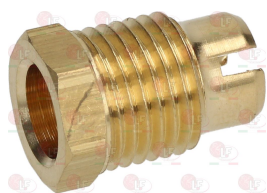
LINCAR INOX 40021130

**3020085 FITTING FOR SPARKING PLUG FIXING \varnothing 7 mm
thread M10x1 - h 11 mm**



LINCAR INOX 38024012

**3020200 FITTING FOR THERMOCOUPLE \varnothing 6.5 mm
thread M10x1**



LINCAR INOX 38024013

**3001003 IGNITION PLUG ROUND \varnothing 7x44 mm
M faston M4x1 mm
overall length 65 mm**



LINCAR INOX 40020902

**3020060 IGNITION PLUG ROUND \varnothing 7x44 mm
M faston M 4x1 mm
overall length 82 mm
model CB505/021 Junkers
for model P502F**



LINCAR INOX 40020907

**3020124 IGNITION PLUG ROUND \varnothing 7x44 mm
connection \varnothing 2.4 mm
overall length 58 mm**



LINCAR INOX 009,008

**3020294 IGNITION PLUG ROUND \varnothing 7x44 mm
M faston M4x1 mm
overall length 67 mm**



**3020365 IGNITION PLUG ROUND \varnothing 7x44 mm
connection \varnothing 2.4 mm
overall length 52 mm**





Suitable for:

3020111 OLIVE FOR PIPE \varnothing 4 mm
 \varnothing ext. 8 mm - h 9.5 mm



5071220 PILOT JET POLIDORO \varnothing 0.22 mm



3020449 PILOT JET POLIDORO \varnothing 0.54 mm



LINCAR INOX 38023023

3020044 PILOT JET SIT \varnothing 0.20 mm



3020077 PIPE FITTING \varnothing 4 mm
thread M10x1 - h 10.5 mm



LINCAR INOX 105076

5014757 PIPE FITTING \varnothing 6 mm
thread M10x1 mm - h 11 mm



LINCAR INOX



Suitable for:

3020112 OLIVE FOR PIPE \varnothing 6 mm
 \varnothing ext. 8 mm - h 9 mm



LINCAR INOX M40021125

LINCAR INOX 40021125

3020452 PILOT JET POLIDORO \varnothing 0.32 mm



3020464 PILOT JET POLIDORO \varnothing 0.64 mm



3020045 PILOT JET SIT \varnothing 0.50 mm



3020078 PIPE FITTING \varnothing 6 mm
thread M10x1 - h 10.5 mm



LINCAR INOX 40021603

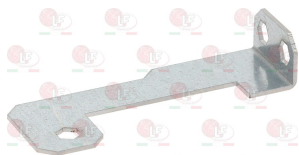


Suitable for:

LINCAR INOX



5085911 PILOT BURNER SUPPORT BRACKET
external dimensions 94x40x18 mm



LINCAR INOX 26121047

Suitable for:

5079759 PILOT BURNER 1 FLAME
thread M10x1 mm



LINCAR INOX 38024001

3020115 PILOT CAP SIT 1 FLAME



LINCAR INOX 40021120

3020449 PILOT JET POLIDORO ø 0.54 mm



LINCAR INOX 38023023

3020201 PILOT JET SIT ø 0.14 mm



LINCAR INOX M40021483

3020557 PILOT JET SIT ø 0.20 mm



LINCAR INOX 38023030

3020040 PILOT JET SIT ø 0.30 mm



LINCAR INOX 38023085

3020541 PILOT JET SIT ø 0.35 mm



LINCAR INOX M38023031

LINCAR INOX 38023031

5015516 PILOT JET SIT ø 0.40 mm



LINCAR INOX 38023040

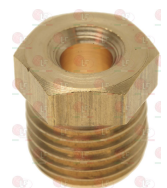
LINCAR INOX 38023082

3020041 PILOT JET SIT ø 0.41 mm



LINCAR INOX 38023104

3020077 PIPE FITTING ø 4 mm
thread M10x1 - h 10.5 mm



LINCAR INOX 105076

3020078 PIPE FITTING ø 6 mm
thread M10x1 - h 10.5 mm



LINCAR INOX 40021603



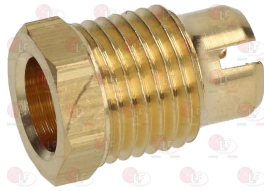
Suitable for:

3020010 TARGET PILOT BURNER SIT 2 FLAMES
supplied without sparking plug, nozzle and gasket
with thermocouple fitting



LINCAR INOX 40021131

3020200 FITTING FOR THERMOCOUPLE \varnothing 6.5 mm
thread M10x1



LINCAR INOX 38024013

3020060 IGNITION PLUG ROUND \varnothing 7x44 mm
M faston M 4x1 mm
overall length 82 mm
model CB505/021 Junkers
for model P502F



LINCAR INOX 40020907

3020294 IGNITION PLUG ROUND \varnothing 7x44 mm
M faston M4x1 mm
overall length 67 mm



3020573 KIT OLIVE FOR PIPE \varnothing 4 mm - 5 PCS.



Suitable for:

3020085 FITTING FOR SPARKING PLUG FIXING \varnothing 7 mm
thread M10x1 - h 11 mm



LINCAR INOX 38024012

3001003 IGNITION PLUG ROUND \varnothing 7x44 mm
M faston M4x1 mm
overall length 65 mm



LINCAR INOX 40020902

3020124 IGNITION PLUG ROUND \varnothing 7x44 mm
connection \varnothing 2.4 mm
overall length 58 mm



LINCAR INOX 009,008

3020365 IGNITION PLUG ROUND \varnothing 7x44 mm
connection \varnothing 2.4 mm
overall length 52 mm



3020113 OLIVE FOR PIPE \varnothing 4 mm
 \varnothing ext. 8 mm - h 11 mm





Suitable for:

3348036 OLIVE FOR PIPE \varnothing 4 mm
 \varnothing ext. 8 mm - h 8 mm
for model PEL 21-22-24-25



LINCAR INOX



Suitable for:

3020114 OLIVE FOR PIPE \varnothing 6 mm
 \varnothing ext. 8 mm - h 11 mm



3020086 PILOT GASKET SIT 71x32x1.5 mm
distance between holes 52 mm



3020201 PILOT JET SIT \varnothing 0.14 mm



3020042 PILOT JET SIT \varnothing 0.19 mm



LINCAR INOX M40021483

3020542 PILOT JET SIT \varnothing 0.20 mm



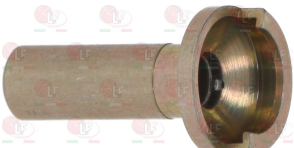
5047578 PILOT JET SIT \varnothing 0.24 mm



3020202 PILOT JET SIT \varnothing 0.27 mm



2102405 PILOT JET SIT \varnothing 0.35 mm



3020043 PILOT JET SIT \varnothing 0.36 mm



3020543 PILOT JET SIT \varnothing 0.38 mm



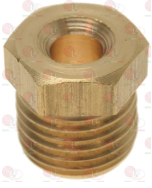
5022050 PILOT JET SIT \varnothing 0.50 mm





Suitable for:

3020077 PIPE FITTING \varnothing 4 mm
thread M10x1 - h 10.5 mm



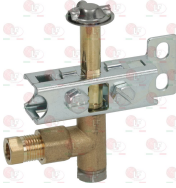
LINCAR INOX 105076

3020078 PIPE FITTING \varnothing 6 mm
thread M10x1 - h 10.5 mm



LINCAR INOX 40021603

3020006 THREE-FLAME PILOT BURNER SIT
multigas with jet \varnothing 0.20 mm
with 3 positions bracket



LINCAR INOX 309.004

LINCAR INOX 40022510

3020103 BRACKET 3 POSITIONS FOR PILOT SIT



3020110 DEFLECTOR 3 FLAMES FOR PILOT SIT



3020083 FITTING AND OLIVE \varnothing 4 mm
thread M10x1 - h 24 mm



LINCAR INOX



Suitable for:

3348029 PIPE FITTING \varnothing 4 mm
thread M10x1 mm - h 11 mm
for model PEL 21-22-24-25



5014757 PIPE FITTING \varnothing 6 mm
thread M10x1 mm - h 11 mm



3020104 BRACKET CLAMP 3 POSITIONS FOR PILOT SIT



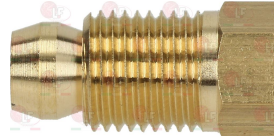
3020109 DEFLECTOR 2 FLAMES FOR PILOT SIT



5048713 DEFLECTOR 3 FLAMES FOR PILOT SIT



3020084 FITTING AND OLIVE \varnothing 6 mm
thread M10x1 - h 10 mm





Suitable for:

3020513 FITTING AND OLIVE \varnothing 6 mm
thread 10x1 - h 10 mm



3001003 IGNITION PLUG ROUND \varnothing 7x44 mm
M faston M4x1 mm
overall length 65 mm



LINCAR INOX 40020902

3020124 IGNITION PLUG ROUND \varnothing 7x44 mm
connection \varnothing 2.4 mm
overall length 58 mm



LINCAR INOX 009,008

3020365 IGNITION PLUG ROUND \varnothing 7x44 mm
connection \varnothing 2.4 mm
overall length 52 mm



3348036 OLIVE FOR PIPE \varnothing 4 mm
 \varnothing ext. 8 mm - h 8 mm
for model PEL 21-22-24-25



LINCAR INOX



Suitable for:

3020102 HEXAGON HEAD SCREW 3/16"x18 mm
for PILOT BURNER SIT



3020060 IGNITION PLUG ROUND \varnothing 7x44 mm
M faston M 4x1 mm
overall length 82 mm
model CB505/021 Junkers
for model P502F



LINCAR INOX 40020907

3020294 IGNITION PLUG ROUND \varnothing 7x44 mm
M faston M4x1 mm
overall length 67 mm



3020082 OLIVE FOR PIPE \varnothing 12 mm
 \varnothing ext. 14 mm - h 6 mm
for model PEL 22-24-25



5027953 OLIVE FOR PIPE \varnothing 4 mm
 \varnothing ext. 8 mm - h 8 mm
for model COPRECI CAL3200





Suitable for:

3020081 OLIVE FOR PIPE \varnothing 6 mm
 \varnothing ext. 8 mm - h 6.5 mm



3020054 PILOT JET SIT \varnothing 0.20 mm



4058525 PILOT JET SIT \varnothing 0.30 mm



5015516 PILOT JET SIT \varnothing 0.40 mm



LINCAR INOX 38023040 **LINCAR INOX 38023082**
5075989 PILOT JET SIT \varnothing 0.70 mm



3020105 PILOT WITH 0.20 mm \varnothing JET



LINCAR INOX



Suitable for:

3020097 PILOT AERATION REGULATOR
internal \varnothing 7 mm - external \varnothing 9 mm
height 10 mm



3020156 PILOT JET SIT \varnothing 0.25 mm



3020055 PILOT JET SIT \varnothing 0.35 mm



3500269 PILOT JET SIT \varnothing 0.45 mm



3020308 PILOT WITH NOZZLE \varnothing 0.40 mm



3020106 PILOT WITH 0.25 mm \varnothing JET





Suitable for:

3020107 PILOT WITH 0.35 mm Ø JET



3020077 PIPE FITTING Ø 4 mm
thread M10x1 - h 10.5 mm



LINCAR INOX 105076

3020078 PIPE FITTING Ø 6 mm
thread M10x1 - h 10.5 mm



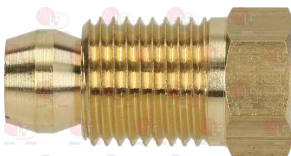
LINCAR INOX 40021603

3020199 THREE-FLAME PILOT BURNER SIT
supplied without sparking plug, nozzle and gasket



LINCAR INOX 40021132

3020084 FITTING AND OLIVE Ø 6 mm
thread M10x1 - h 10 mm



3020085 FITTING FOR SPARKING PLUG FIXING Ø 7 mm
thread M10x1 - h 11 mm



LINCAR INOX 38024012

LINCAR INOX



Suitable for:

3020079 PIPE FITTING Ø 12 mm
thread Ø 3/8" M - h 20 mm



5033138 PIPE FITTING Ø 4 mm
thread Ø 1/8" M - h 11 mm



5014757 PIPE FITTING Ø 6 mm
thread M10x1 mm - h 11 mm



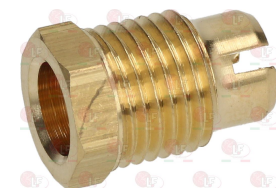
3020083 FITTING AND OLIVE Ø 4 mm
thread M10x1 - h 24 mm



3020513 FITTING AND OLIVE Ø 6 mm
thread 10x1 - h 10 mm



3020200 FITTING FOR THERMOCOUPLE Ø 6.5 mm
thread M10x1



LINCAR INOX 38024013



Suitable for:

3001003 IGNITION PLUG ROUND \varnothing 7x44 mm
M faston M4x1 mm
overall length 65 mm



LINCAR INOX 40020902

3020124 IGNITION PLUG ROUND \varnothing 7x44 mm
connection \varnothing 2.4 mm
overall length 58 mm



LINCAR INOX 009,008

3020365 IGNITION PLUG ROUND \varnothing 7x44 mm
connection \varnothing 2.4 mm
overall length 52 mm



3020112 OLIVE FOR PIPE \varnothing 6 mm
 \varnothing ext. 8 mm - h 9 mm



LINCAR INOX M40021125

LINCAR INOX 40021125

3020557 PILOT JET SIT \varnothing 0.20 mm



LINCAR INOX 38023030

LINCAR INOX



Suitable for:

3020060 IGNITION PLUG ROUND \varnothing 7x44 mm
M faston M 4x1 mm
overall length 82 mm
model CB505/021 Junkers
for model P502F



LINCAR INOX 40020907

3020294 IGNITION PLUG ROUND \varnothing 7x44 mm
M faston M4x1 mm
overall length 67 mm



3020111 OLIVE FOR PIPE \varnothing 4 mm
 \varnothing ext. 8 mm - h 9.5 mm



5035324 PILOT JET SIT \varnothing 0.18 mm



3020157 PILOT JET SIT \varnothing 0.25 mm





Suitable for:

3020040 PILOT JET SIT \varnothing 0.30 mm



LINCAR INOX 38023085

3020041 PILOT JET SIT \varnothing 0.41 mm

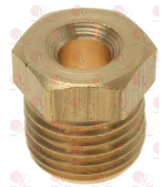


LINCAR INOX 38023104

3020187 PILOT JET SIT \varnothing 0.51 mm



3020077 PIPE FITTING \varnothing 4 mm
thread M10x1 - h 10.5 mm



LINCAR INOX 105076

5014757 PIPE FITTING \varnothing 6 mm
thread M10x1 mm - h 11 mm



LINCAR INOX



Suitable for:

3020541 PILOT JET SIT \varnothing 0.35 mm



LINCAR INOX M38023031

LINCAR INOX 38023031

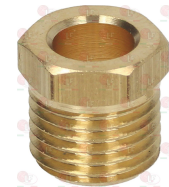
2106308 PILOT JET SIT \varnothing 0.45 mm



4053669 PILOT JET SIT \varnothing 0.75 mm



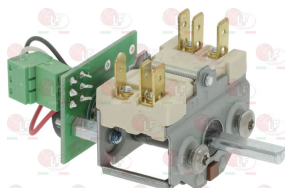
3020078 PIPE FITTING \varnothing 6 mm
thread M10x1 - h 10.5 mm



LINCAR INOX 40021603

Selector switches

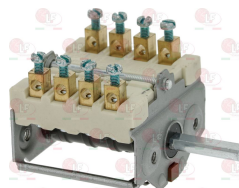
3057362 SELECTOR SWITCH KIT 0-1 POSITIONS
complete with and potentiometer
contact capacity 16A 250V - max 150°C
D-shaped pin \varnothing 6x4.6 mm



LINCAR INOX 40001045

LINCAR INOX 40001701

3057014 SELECTOR SWITCH 0-1 POSITIONS
contact capacity 16A 250V - max 150°C
D-shaped pin \varnothing 6x4.6 mm
back connection for thermostat

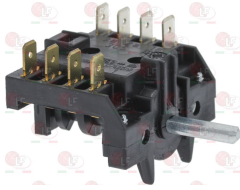


LINCAR INOX 40001018



Suitable for:

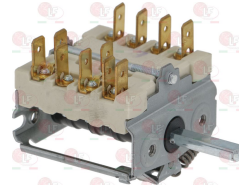
3057019 SELECTOR SWITCH 0-1 POSITIONS
 contact capacity 16A 250V - max 150°C
 D-shaped pin \varnothing 6x4.6 mm



LINCAR INOX 40001025

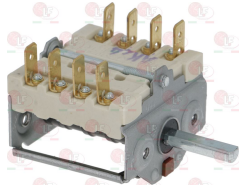
Suitable for:

3057082 SELECTOR SWITCH 0-1 POSITIONS
 contact capacity 16A 250V - max 150°C
 D-shaped pin 6x4.6 mm



LINCAR INOX 40001024

3057177 SELECTOR SWITCH 0-1 POSITIONS
 contact capacity 16A 250V - max 150°C
 D-shaped pin \varnothing 6x4.6 mm



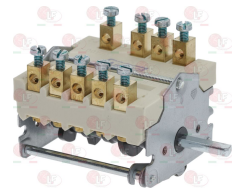
LINCAR INOX 40001010

3057190 SELECTOR SWITCH 0-1 POSITIONS
 contact capacity 32A 600V - max 75°C
 rectangular pin 4x5 mm



LINCAR INOX M40001021

3057023 SELECTOR SWITCH 0-6 POSITIONS
 contact capacity 32A 250V - max 150°C
 D shaft \varnothing 6x4.6 mm



LINCAR INOX 40001005

Spark generators

3181010 SPARK GENERATOR 1 OUTLET
 1.5Vdc battery powered



LINCAR INOX 40002105

3181002 SPARK GENERATOR 2 OUTLETS
 220/240V 50/60Hz



LINCAR INOX 40002100

Sparking and detection plugs

3001003 IGNITION PLUG ROUND \varnothing 7x44 mm
 M faston M4x1 mm
 overall length 65 mm



LINCAR INOX 40020902

3020060 IGNITION PLUG ROUND \varnothing 7x44 mm
 M faston M 4x1 mm
 overall length 82 mm
 model CB505/021 Junkers
 for model P502F



LINCAR INOX 40020907



Suitable for:

LINCAR INOX



3020124 IGNITION PLUG ROUND \varnothing 7x44 mm
connection \varnothing 2.4 mm
overall length 58 mm



LINCAR INOX 009,008

Suitable for:

3020232 IGNITION PLUG ROUND \varnothing 7x44 mm
connection \varnothing 2.4 mm
overall length 61 mm



LINCAR INOX 40020900

3020230 ROUND IGNITION PLUG \varnothing 7x54 mm
male faston M4x1 mm
overall length 63 mm
for COOKING HOB series 700 PROTAGONISTA NUOVA
for COOKING HOB series 900 PROTAGONISTA NUOVA
for COOKING HOB series 1100 PROTAGONISTA NUOVA



LINCAR INOX 40020906

Switches

3319252 BIPOLAR SWITCH BLACK 16A 250V
16(4)A 250V - max. temperature 120°C
mounting hole 22x30 mm



LINCAR INOX 40001032

3319780 BLOCK CONNECTION WHITE 22x30 mm



3319779 BLOCK CONNECTIONS BLACK 22x30 mm



3319782 FRAME SAFETY 2 SIDES BLACK 22x30 mm



3319783 FRAME SAFETY 4 SIDES BLACK 22x30 mm



3319501 PUSH-BUTTON PROTECTION CAP
external dimensions 29x36 mm
for switches with mounting hole 22x30 mm



Taps for tank refilling

3359138 WATER INLET TAP \varnothing 1/2"FF



LINCAR INOX 4005000

2103687 FIXING WASHER 26xM19



5094039 WATER INLET TAP \varnothing 1/2"FF
square pin 7x7 mm



LINCAR INOX M40050036

LINCAR INOX 40050036

5094040 WATER INLET TAP HANDLE KIT
the kit includes:
1 handle with square hole 7x7 mm
1 ring \varnothing 67 mm



LINCAR INOX M40041002

LINCAR INOX 40041002

5094040 WATER INLET TAP HANDLE KIT
the kit includes:
1 handle with square hole 7x7 mm
1 ring \varnothing 67 mm



LINCAR INOX M40041002

LINCAR INOX 40041002

Thermocouples and accessories

3440067 INTERRUPTED THERMOCOUPLE M9x1 100 cm.
interrupted contact with terminals



LINCAR INOX 40021025

LINCAR INOX 40021042

3440066 INTERRUPTED THERMOCOUPLE M9x1 60 cm
interrupted contact with fastons



LINCAR INOX 40021028

3440038 THERMOCOUPLE SIT M9x1 120 cm



LINCAR INOX 40021010

3440838 THERMOCOUPLE SIT M9x1 120 cm - 10 PCS





Suitable for:

LINCAR INOX



3440080 THERMOCOUPLE SIT M9x1 40 cm.



LINCAR INOX 40021005

Suitable for:

3440880 THERMOCOUPLE SIT M9x1 40 cm - 10 PCS



3440035 THERMOCOUPLE SIT M9x1 60 cm.



LINCAR INOX 40021032

3440835 THERMOCOUPLE SIT M9x1 60 cm - 10 PCS



3440036 THERMOCOUPLE SIT M9x1 85 cm.



LINCAR INOX 40021008

3440836 THERMOCOUPLE SIT M9x1 85 cm - 10 PCS



3440049 THERMOCOUPLE SIT M9x1 75 cm



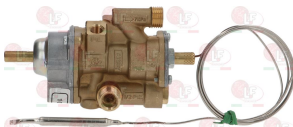
LINCAR INOX 40021007

3440849 THERMOCOUPLE SIT M9x1 75 cm - 10 PCS



Thermostatic gas valves

3345041 TAP THERMOSTATIC 25ST
setting temperature 100-300°C
fittings M16x1.5 mm
thermocouple connection M9x1
bulb \varnothing 6x100 mm
capillary length 1200 mm
D-shaped pin \varnothing 8x6.5 mm



LINCAR INOX 40020010

3348038 OLIVE FOR PIPE \varnothing 10 mm
 \varnothing ext. 12 mm - h 14 mm
for model PEL 22-24-25





Suitable for:

3348044 OLIVE FOR PIPE \varnothing 10 mm
 \varnothing ext. 12 mm - h 5 mm
for model PEL 20-21-24-25



LINCAR INOX



Suitable for:

3020082 OLIVE FOR PIPE \varnothing 12 mm
 \varnothing ext. 14 mm - h 6 mm
for model PEL 22-24-25



3348036 OLIVE FOR PIPE \varnothing 4 mm
 \varnothing ext. 8 mm - h 8 mm
for model PEL 21-22-24-25



3348037 OLIVE FOR PIPE \varnothing 6 mm
 \varnothing ext. 8 mm - h 7 mm
for model PEL 21-22-24-25



3348031 PIPE FITTING \varnothing 10 mm
thread M20x1.5 mm - h 15 mm
for model PEL 22-24-25



3348043 PIPE FITTING \varnothing 10 mm
thread M16x1.5 mm - h 14 mm
for model PEL 20-21-24-25



3348032 PIPE FITTING \varnothing 12 mm
thread M20x1.5 mm - h 15 mm
for model PEL 22-24-25



3020077 PIPE FITTING \varnothing 4 mm
thread M10x1 - h 10.5 mm



3348029 PIPE FITTING \varnothing 4 mm
thread M10x1 mm - h 11 mm
for model PEL 21-22-24-25



LINCAR INOX 105076

3020078 PIPE FITTING \varnothing 6 mm
thread M10x1 - h 10.5 mm



LINCAR INOX 40021603



Suitable for:

5014757 PIPE FITTING \varnothing 6 mm
thread M10x1 mm - h 11 mm



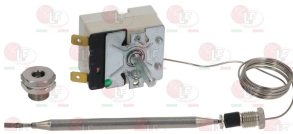
LINCAR INOX



Suitable for:

Thermostats

3444698 SINGLE-PHASE THERMOSTAT 30-110°C
D-shaped pin \varnothing 6x4.6 mm
capillary length 870 mm
bulb \varnothing 6x113 mm - with stuffing gland fitting M9x1
with complete tank sealing fitting M12x1



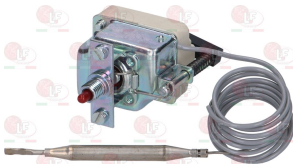
LINCAR INOX 40000901

3744094 SINGLE-PHASE THERMOSTAT 30-150°C
D-shaped pin \varnothing 6x4.6 mm
covered capillary length 1600 mm
bulb \varnothing 3x145 mm



LINCAR INOX 40010010

3444285 SINGLE-PHASE THERMOSTAT 350°C
with manual reset
covered capillary length 870 mm - 16A 250V
bulb \varnothing 6x77 mm



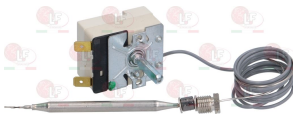
LINCAR INOX 40000917

3444774 SINGLE-PHASE THERMOSTAT 45-295°C
D-shaped pin \varnothing 6x4.6 mm
covered capillary length 900 mm - 16A 230V
bulb \varnothing 4x95 mm



LINCAR INOX 40000906

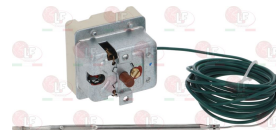
3444376 SINGLE-PHASE THERMOSTAT 95-190°C
D-shaped pin \varnothing 6x4.6 mm
covered capillary length 1010 mm - 16A 250V
bulb \varnothing 6x100 mm - with adapter nipple band M10x1



LINCAR INOX 40000907

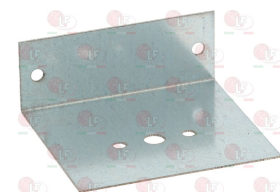
LINCAR INOX 40000955

5025572 THERMOSTATO THREE-PHASE 180°C
manual reset
covered capillary length 3000 mm - 20A 400V
bulb \varnothing 4x125 mm



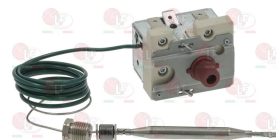
LINCAR INOX 40000926

5080862 THERMOSTAT FASTENING BRACKET
external dimensions 80x72x30 mm



LINCAR INOX 26042525

5059787 THERMOSTAT SINGLE-PHASE 240°C
with manual reset
covered capillary length 860 mm - 16A 250V
bulb \varnothing 6x77 mm - with stuffing gland fitting M10x1

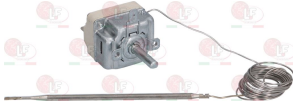


LINCAR INOX 40000902



Suitable for:

3444145 THERMOSTAT SINGLE-PHASE 66-324°C
 D-shaped pin \varnothing 6x4.6 mm
 capillary length 1600 mm - 16A 250V
 bulb \varnothing 4x120 mm
 for OVEN



LINCAR INOX 40000906

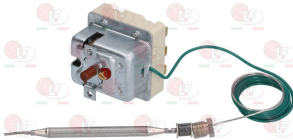
Suitable for:

3444052 THERMOSTAT 3-PHASE 60-320°C
 D-shaped pin \varnothing 6x4.6 mm
 capillary length 900 mm - 10A 400V
 bulb \varnothing 3x230 mm



LINCAR INOX 40000905

3444375 THREE-PHASE THERMOSTAT 225°C
 with manual reset
 covered capillary length 900 mm - 20A 400V
 bulb \varnothing 6x90 mm - with adapter nipple band M10x1



LINCAR INOX 40000922

3444307 THREE-PHASE THERMOSTAT 230°C
 with manual reset
 covered capillary length 900 mm - 10A 400V
 bulb \varnothing 6x100 mm - with adapter nipple band M10x1



LINCAR INOX 40000919

3444354 THREE-PHASE THERMOSTAT 350°C
 with manual reset
 capillary length coated 950 mm - 10A 400V
 bulb \varnothing 3x190 mm
 for Fry top (LINCAR INOX)



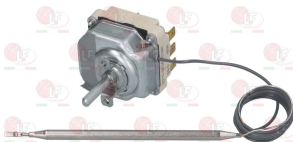
LINCAR INOX 40000920

3444632 THREE-PHASE THERMOSTAT 360°C
 with manual reset
 covered capillary length 1800 mm - 20A 300V
 bulb \varnothing 4x120 mm



LINCAR INOX 40000921

3444620 THREE-PHASE THERMOSTAT 45-120°C
 D-shaped pin \varnothing 6x4.6 mm
 covered capillary length 870 mm - 16A 380V
 bulb \varnothing 6x140 mm
 for Pasta cooker (LINCAR INOX)



LINCAR INOX 40000908



Suitable for:

LINCAR INOX



Suitable for:

Wheels and accessories

5067182 HANDWHEEL \varnothing 200 mm
middle hole \varnothing 20 mm - with groove 36x6 mm
completo di maniglia pieghevole



LINCAR INOX 40040221

5012756 SCREW NUT FOR BRATT PAN \varnothing 40x40 mm



5056122 EXTENSION FOR TILTING SCREW \varnothing 20x543 mm



5056123 SCREW NUT FOR BRATT PAN \varnothing 40x40 mm



5004961 SUPPORT FLANGE WITH BEARING UCF204
flange external dimensions 86x86 mm



5012754 TILTING SCREW
total length 543 mm



5012755 TILTING SCREW
total length 350 mm



5056124 TILTING SCREW \varnothing 20 mm
overall length 363 mm



The data herewith contained may change without notice and LF SpA cannot be held responsible for possible errors stated or resulting by the use of this document. All rights reserved. No part of this publication may be reproduced without written permission by LF SpA.



Distributing Components, Spare Parts & Accessories in original quality worldwide

-
- LF SpA HEADQUARTERS**
via Voltri, 80 - 47522 Cesena (FC) ITALY
Tel. +39 0547 34 11 11 - Fax +39 0547 34 11 10
www.lfricambi724.it - info@lfricambi.it
Export Dept. Tel. +39 0547 34 11 50 - Fax +39 0547 34 11 55
www.lfspareparts724.com - export@lfspareparts.com
- LF SpA HOUSEHOLD COMPONENTS DIVISION**
Via Padriciano, 99 - AREA Science Park - 34149 Trieste (TS) ITALY
Tel. +39 0547 34 12 42 - Fax +39 0547 34 12 48
www.lfspareparts724.com - info@lfspareparts.com
- EPGC Sas FRANCE**
13, Rue des Forts - 59960 Neuville en Ferrain
Tel. +33 (0)3 20 25 06 21 - Fax +33 (0)3 20 25 34 12
www.epgc.com - epgc@epgc.com
- LF GmbH GERMANY**
Junkersstrasse, 3 - D-82178 Puchheim - München
Tel. +49 89 89 45 78 66 - Fax +49 89 89 45 78 88
www.lfersatzteile724.de - info@lfersatzteile.de
- LF China REPUBLIC OF CHINA**
Room 403, No.2, Huadu Mansion, Lane 422, Huanghua Rd.
Minhang Dist. - 201103 Shanghai
Tel. +86 (0)21 33 53 66 31 - Fax +86 (0)21 33 53 66 32
www.lfspareparts724.com - china@lfspareparts.com
- OOO LF RUSSIAN FEDERATION**
Ul. Anatoliya Zhivova, 8 - office 1 - 123100 Moscow
Tel./Fax +7 495 725 26 53
www.lfspareparts724.ru - info@lfspareparts.ru
- LF Repuestos Horeca S.L.U. SPAIN**
Poligono Industrial Carpetania - C/Miguel Faraday, 8 - 28906 Getafe
Tel. +34 91 477 91 00 - Fax +34 91 477 90 81
www.lfrepuestos-horeca724.es - info@lfrepuestos.es
- LF Scandinavia Aps - LF Spareparts S.p.A. DENMARK**
Nupark, 51 - 7500 Holstebro
Tel. +45 70 70 77 33
www.lfspareparts724.dk - denmark@lfspareparts.dk
- LF SpA Cesena (IT) Swiss Branch Steinhausen SWITZERLAND**
Sennweidstrasse, 45 - CH-6312 Steinhausen
Tel. +41 (0)41 760 15 80/1 - Fax +41 (0)41 760 15 85
www.lfersatzteile724.ch - info@lfersatzteile.ch
- LF Spare Parts Ltd. UNITED KINGDOM**
A10a Lakeside Business Park, Broadway Lane
South Cerney, Gloucestershire GL7 5XL
Tel. +44 (0)1285 86 16 25 - Fax +44 (0)1285 86 39 49
www.lfspareparts724.co.uk - info@lfspareparts.co.uk
- LF Central Est Europe S.r.o. CZECH REPUBLIC**
Antala Staska 1859/34
14000 Praha 4 - KRC
Tel. +420 730 156 910
www.lfspareparts724.cz - info@lfspareparts.cz
- LF SPARE PARTS INC. USA**
Legal address:
155 Office Plaza Dr - Suite A - Tallahassee, FL 32301
Business/Mailing address:
1100 South Tower, 225 Peachtree St., N.E. - Atlanta, GA 30303, USA
Tel. +1-404-525-2600 - Fax +1-404-586-3528
www.lfspareparts724.us - info@lfspareparts.us
Tel. West Coast and Midwest: 206-349-1525 Sauro
Tel. East Coast and the Caribbean: 786-817-1764 Luis
-
- AUSTRALIA AND NEW ZEALAND**
www.lfspareparts724.com
andrea.calvio@lfspareparts.com
- AUSTRIA**
www.lfersatzteile724.at
info@lfersatzteile.at
- BALKAN COUNTRIES**
www.lfspareparts724.com
matija.ramov@lfspareparts.com
- BALTIC COUNTRIES**
www.lfspareparts724.com
inara.silina@lfspareparts.com
- LATIN AMERICA AND THE CARRIBEANS**
www.lfrepuestos-horeca724.es
export@lfrepuestos.es
- POLAND**
www.lfspareparts724.pl
info@lfspareparts.pl
- SOUTH KOREA**
www.lfspareparts724.com
fabio.doni@lfspareparts.com
- TURKEY**
www.lfyedekparca724.com
export@lfspareparts.com