



# Spare parts for the professional sector: Cooking equipment



Suitable for:

# ANIMO



This catalogue is automatically generated.  
Therefore, the sequence of the items might  
not be always shown at best.  
Updates will be issued in case of additions  
and/or amendments.

*Suitable universal spare parts may not be included*





Suitable for:

# ANIMO



Suitable for:

## Contact thermostats

**1443016 CONTACT THERMOSTAT 106°C**  
16(3)A 250V - with manual reset



ANIMO 03103

## Contactors

**5061929 CONTACTOR ABB B6-40-00-F**  
6A 400V 4Kw - coil 230V 50/60Hz  
4 NO contacts  
faston type connections



ANIMO 02013

ANIMO 02696

ANIMO 1001105

## Dispenser taps and accessories

**1357011 GASKET FOR MANIFOLD TAP**



ANIMO 04034

**1357012 GASKET FOR MANIFOLD TAP**



ANIMO 04233

**3357062 GASKET FOR MANIFOLD TAP**



ANIMO 04189

**1357007 LEVER WITH DIAPHRAGM**  
for manifold tap



ANIMO 04247

**3357031 LEVER WITH DIAPHRAGM**  
for manifold tap



ANIMO 04032



Suitable for:

Suitable for:

**3357057** **MANIFOLD TAP  $\varnothing$  1/2" M**  
connection  $\varnothing$  1/2" M - chrome-plated body



ANIMO 99707

**1357011** **GASKET FOR MANIFOLD TAP**



ANIMO 04034

**3357031** **LEVER WITH DIAPHRAGM**  
for manifold tap



ANIMO 04032

**1357002** **MANIFOLD TAP BODY 1/2"**  
connection  $\varnothing$  1/2" M - chrome-plated body



ANIMO 54129

**3357060** **MANIFOLD TAP  $\varnothing$  1/4" M**  
connection  $\varnothing$  1/4" M - chrome-plated metal body



ANIMO 04181

**3357058** **MANIFOLD TAP  $\varnothing$  3/4" F**  
chrome plated housing



ANIMO 04170

**3357062** **GASKET FOR MANIFOLD TAP**



ANIMO 04189

**3357059** **MANIFOLD TAP  $\varnothing$  3/4" M**  
connection  $\varnothing$  3/4" M - metal body



ANIMO 54116

**1357011** **GASKET FOR MANIFOLD TAP**



ANIMO 04034

**1357002** **MANIFOLD TAP BODY 1/2"**  
connection  $\varnothing$  1/2" M - chrome-plated body



ANIMO 54129



Suitable for:

# ANIMO



**1357003 MANIFOLD TAP 1/2"**  
connection  $\varnothing$  1/2"M - chrome-plated body



ANIMO 99705

Suitable for:

**1357011 GASKET FOR MANIFOLD TAP**



ANIMO 04034

**3357031 LEVER WITH DIAPHRAGM**  
for manifold tap



ANIMO 04032

**1357010 MANIFOLD TAP 1/2"**  
connection  $\varnothing$  1/2"M - black metal body



ANIMO 04250

**1357012 GASKET FOR MANIFOLD TAP**



ANIMO 04233

**1357007 LEVER WITH DIAPHRAGM**  
for manifold tap



ANIMO 04247

## Electronic controllers

**3446101 DIGITAL CLOCK WITH TIMER K400-2CM**  
up to 99 minutes 59 seconds  
16A 200/240V 45/55Hz  
external dimensions 72x55x35 mm



ANIMO 99731

**Indicator lights**

**1221017 INDICATOR LIGHT BLUE 250V**  
ø head 10 mm - ø hole 9 mm - T120°C



ANIMO 01998

**1221021 INDICATOR LIGHT GREEN 24V**  
mounting hole 22x30 mm



ANIMO 02526

**3221095 INDICATOR LIGHT ORANGE 230V**  
head ø 13.5 mm - hole ø 10 mm - 120°C  
universal application



ANIMO 02037

**3221170 INDICATOR LIGHT ORANGE 230V**  
head ø 10 mm - hole ø 9 mm - 120°C



ANIMO 02258

**3221177 INDICATOR LIGHT WHITE 230V**  
ø head 10 mm - ø hole 9 mm - 120°C



**3221176 INDICATOR LIGHT GREEN 230V**  
head ø 10 mm - hole ø 9 mm - 120°C



**1221018 INDICATOR LIGHT ORANGE 24V**  
mounting hole 22x30 mm



ANIMO 02525



Suitable for:

# ANIMO



Suitable for:

## Ironmongery (screws,nuts,washers)

**3528238 FLAT WASHER M4**  
internal/external  $\varnothing$  4.3/9 mm - thickness 0.8 mm  
stainless steel - UNI 6592 - DIN 125 A - ISO 7089



ANIMO 05159

**3528215 HEXAGONAL NUT LOW M4**  
st./steel - UNI 5589 - DIN 936 - ISO 4035



ANIMO 05240

## Knobs

**3241319 KNOB BLACK  $\varnothing$  50 mm 30°-85°C**  
D-shaped hole 6x4.6 mm  
for THERMOSTAT EGO



ANIMO 03042

**3241721 KNOB BLACK  $\varnothing$  50 mm 30°-90°C**  
D-shaped hole 6x4.6 mm  
for thermostat EGO



ANIMO 03040

## O-Ring and ORM gaskets

**1186605 O-RING 03375 EPDM**  
ring thickness 2.62 mm - internal  $\varnothing$  94.92 mm



ANIMO 02938

**3786519 O-RING 04067 EPDM**  
ring thickness 3.53 mm - internal  $\varnothing$  17.04 mm



ANIMO 04290

**1186472 O-RING 04075 EPDM**  
ring thickness 3.53 mm - internal  $\varnothing$  18.64 mm



ANIMO 04070

**1186231 O-RING 04106 EPDM**  
ring thickness 3.53 mm - internal  $\varnothing$  26.58 mm



ANIMO 04289

**1786118 O-RING 04143 RED SILICONE**  
ring thickness 3.53 mm - internal  $\varnothing$  36.10 mm  
for pod punch



ANIMO 1002559



## Solenoid valves

**3120005 SOLEN. VALVE ELBI TYPE 329 1 WAY 180°**  
220/240V 50/60Hz - max. temperature 90°C  
inlet 3/4" - outlet ø 10.5 mm



ANIMO 02026

**3120021 ADJUSTER FOR INLET ELBI BLACK**  
flow rate 12 L/min - tolerance +/- 15%



**3120019 ADJUSTER FOR INLET ELBI BLACK**  
flow rate 5.5 L/min - tolerance +/- 15%



**3120022 ADJUSTER FOR INLET ELBI BLACK**  
flow rate 16 L/min - tolerance +/- 15%



**3120037 ADJUSTER FOR OUTLET ELBI GREEN**  
flow rate 0.25 L/min - tolerance +/- 25%



**3120201 ADJUSTER FOR OUTLET ELBI GREY**  
flow rate 4.7 L/min - tolerance +/- 25%



**3120016 ADJUSTER FOR OUTLET ELBI NEUTRAL**  
flow rate 1.2 L/min - tolerance +/- 25%



**3120017 ADJUSTER FOR OUTLET ELBI ORANGE**  
flow rate 2.5 L/min - tolerance +/- 25%



**3120015 ADJUSTER FOR OUTLET ELBI RED**  
flow rate 0.5 L/min - tolerance +/- 25%



**3120203 ADJUSTER FOR OUTLET ELBI WHITE**  
flow rate 2 L/min - tolerance +/- 25%



**3120202 ADJUSTER FOR OUTLET ELBI YELLOW**  
flow rate 0.35 L/min / tolerance +/- 25%



**3120000 FILTER FOR INLET SOLENOID VALVE ELBI**





Suitable for:

**3120204** **OUTLET ADJUSTER ELBI BLACK**  
flow rate 5.5 L/min - tolerance +/- 25%



# ANIMO



Suitable for:

**3120505** **SOLEN. VALVE ELBI TYPE 329 1 WAY 180°**  
24V 50/60Hz - max. temperature 90°C  
inlet 3/4" - outlet ø 10.5 mm



**3120019** **ADJUSTER FOR INLET ELBI BLACK**  
flow rate 5.5 L/min - tolerance +/- 15%



ANIMO 02801

**3120021** **ADJUSTER FOR INLET ELBI BLACK**  
flow rate 12 L/min - tolerance +/- 15%



**3120022** **ADJUSTER FOR INLET ELBI BLACK**  
flow rate 16 L/min - tolerance +/- 15%



**3120037** **ADJUSTER FOR OUTLET ELBI GREEN**  
flow rate 0.25 L/min - tolerance +/- 25%



**3120201** **ADJUSTER FOR OUTLET ELBI GREY**  
flow rate 4.7 L/min - tolerance +/- 25%



**3120016** **ADJUSTER FOR OUTLET ELBI NEUTRAL**  
flow rate 1.2 L/min - tolerance +/- 25%



**3120017** **ADJUSTER FOR OUTLET ELBI ORANGE**  
flow rate 2.5 L/min - tolerance +/- 25%



**3120015** **ADJUSTER FOR OUTLET ELBI RED**  
flow rate 0.5 L/min - tolerance +/- 25%



**3120203** **ADJUSTER FOR OUTLET ELBI WHITE**  
flow rate 2 L/min - tolerance +/- 25%







Suitable for:

**3120202 ADJUSTER FOR OUTLET ELBI YELLOW**  
flow rate 0.35 L/min / tolerance +/- 25%



**3120204 OUTLET ADJUSTER ELBI BLACK**  
flow rate 5.5 L/min - tolerance +/- 25%



# ANIMO



Suitable for:

**3120000 FILTER FOR INLET SOLENOID VALVE ELBI**



**3120161 SOLENOID VALVE MÜLLER 1 WAY 180°**  
220/240V 50/60Hz - max. temperature 90°C  
inlet 3/4" - outlet ø 13.5 mm



**3120271 COIL MÜLLER 220/240V 50/60Hz**  
max temperature 90°C



ANIMO 02585

**3120274 COIL MÜLLER 220/240V 50/60Hz**  
max. temperature 90°C  
with cable length 2000 mm



**3120273 COIL MÜLLER 230V 60Hz**  
temperature 90°C - for dispenser



**3120325 COIL MÜLLER 24Vac 50/60Hz**  
max temperature 90°C



**5023165 FILTER INLET FOR SOLENOID VALVE MÜLLER**  
ø 19 mm



**5027729 SPRING FOR MÜLLER SOLENOID VALVE COIL**





Suitable for:

# ANIMO



**3120349 SOLENOID VALVE MÜLLER 1 WAY 180°**  
230V 50Hz - max. temperature 90°C  
inlet 3/4" - outlet ø 3/8"



ANIMO PF02163

ANIMO 02163

**3120274 COIL MÜLLER 220/240V 50/60Hz**  
max. temperature 90°C  
with cable length 2000 mm



**3120325 COIL MÜLLER 24Vac 50/60Hz**  
max temperature 90°C



**3120162 SOLENOID VALVE MÜLLER 2 WAY 180°**  
220/240V 50/60Hz - max. temperature 90°C  
inlet 3/4" - two outlets ø 13.5 mm



ANIMO 02158

**3120274 COIL MÜLLER 220/240V 50/60Hz**  
max. temperature 90°C  
with cable length 2000 mm



**3120325 COIL MÜLLER 24Vac 50/60Hz**  
max temperature 90°C



Suitable for:

**3120271 COIL MÜLLER 220/240V 50/60Hz**  
max temperature 90°C



**3120273 COIL MÜLLER 230V 60Hz**  
temperature 90°C - for dispenser



**5023165 FILTER INLET FOR SOLENOID VALVE MÜLLER**  
ø 19 mm



**3120271 COIL MÜLLER 220/240V 50/60Hz**  
max temperature 90°C



**3120273 COIL MÜLLER 230V 60Hz**  
temperature 90°C - for dispenser



**5023165 FILTER INLET FOR SOLENOID VALVE MÜLLER**  
ø 19 mm





Suitable for:

Suitable for:

**3120263 SOLENOID VALVE MÜLLER 3-WAY 180°**  
220/240V 50/60Hz - max. temperature 90°C  
inlet 3/4" - three outlets ø 13.5 mm



ANIMO 02297

**3120274 COIL MÜLLER 220/240V 50/60Hz**  
max. temperature 90°C  
with cable length 2000 mm



**3120271 COIL MÜLLER 220/240V 50/60Hz**  
max temperature 90°C



**3120273 COIL MÜLLER 230V 60Hz**  
temperature 90°C - for dispenser



**3120325 COIL MÜLLER 24Vac 50/60Hz**  
max temperature 90°C

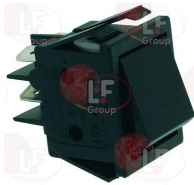


**5023165 FILTER INLET FOR SOLENOID VALVE MÜLLER**  
ø 19 mm



## Switches

**3319252 BIPOLAR SWITCH BLACK 16A 250V**  
16(4)A 250V - max. temperature 120°C  
mounting hole 22x30 mm



ANIMO 02524

**3319779 BLOCK CONNECTIONS BLACK 22x30 mm**



**3319780 BLOCK CONNECTION WHITE 22x30 mm**



**3319782 FRAME SAFETY 2 SIDES BLACK 22x30 mm**





Suitable for:

**3319783 FRAME SAFETY 4 SIDES BLACK 22x30 mm**



# ANIMO



Suitable for:

**3319501 PUSH-BUTTON PROTECTION CAP**  
external dimensions 29x36 mm  
for switches with mounting hole 22x30 mm



**3319012 BIPOLAR SWITCH GREEN 16A 250V**  
16(4)A 250V - max. temperature 120°C  
with indicator light and push-button cap  
mounting hole 22x30 mm - silk screen print 0 - I



**3319780 BLOCK CONNECTION WHITE 22x30 mm**



ANIMO 02294

**3319779 BLOCK CONNECTIONS BLACK 22x30 mm**



**3319782 FRAME SAFETY 2 SIDES BLACK 22x30 mm**



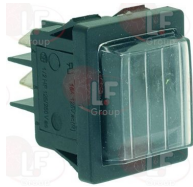
**3319783 FRAME SAFETY 4 SIDES BLACK 22x30 mm**



**3319501 PUSH-BUTTON PROTECTION CAP**  
external dimensions 29x36 mm  
for switches with mounting hole 22x30 mm



**3319376 BLACK BIPOLAR PUSH-BUTTON 16A 250V**  
16(4)A 250V - with push-button cap  
max temperature 120°C  
mounting hole 22x30 mm



**3319780 BLOCK CONNECTION WHITE 22x30 mm**



ANIMO 02523

**3319779 BLOCK CONNECTIONS BLACK 22x30 mm**



**3319782 FRAME SAFETY 2 SIDES BLACK 22x30 mm**





Suitable for:

**3319783 FRAME SAFETY 4 SIDES BLACK 22x30 mm**



# ANIMO



Suitable for:

**3319501 PUSH-BUTTON PROTECTION CAP**  
external dimensions 29x36 mm  
for switches with mounting hole 22x30 mm



**3319296 BLACK BIPOLAR SWITCH 16A 250V**  
with red led indicator light  
max temperature 120°C  
mounting hole 22x30 mm



**3319780 BLOCK CONNECTION WHITE 22x30 mm**



ANIMO 02522

**3319779 BLOCK CONNECTIONS BLACK 22x30 mm**



**3319782 FRAME SAFETY 2 SIDES BLACK 22x30 mm**



**3319783 FRAME SAFETY 4 SIDES BLACK 22x30 mm**



**3319501 PUSH-BUTTON PROTECTION CAP**  
external dimensions 29x36 mm  
for switches with mounting hole 22x30 mm



**3319306 GREEN DOUBLE SWITCH 16A 250V**  
16(4)A 250V - with indicator light  
max temperature 100°C  
mounting hole 22x30 mm



**3319780 BLOCK CONNECTION WHITE 22x30 mm**



ANIMO 02569

**3319779 BLOCK CONNECTIONS BLACK 22x30 mm**



**3319782 FRAME SAFETY 2 SIDES BLACK 22x30 mm**





Suitable for:

**3319783 FRAME SAFETY 4 SIDES BLACK 22x30 mm**



# ANIMO



Suitable for:

**3319501 PUSH-BUTTON PROTECTION CAP**  
external dimensions 29x36 mm  
for switches with mounting hole 22x30 mm



**3319308 ORANGE BIPOLAR SWITCH 16A 250V**  
16(4)A 250V - with indicator light  
max temperature 100°C  
mounting hole 22x30 mm



**3319780 BLOCK CONNECTION WHITE 22x30 mm**



ANIMO 02567

**3319779 BLOCK CONNECTIONS BLACK 22x30 mm**



**3319782 FRAME SAFETY 2 SIDES BLACK 22x30 mm**



**3319783 FRAME SAFETY 4 SIDES BLACK 22x30 mm**



**3319501 PUSH-BUTTON PROTECTION CAP**  
external dimensions 29x36 mm  
for switches with mounting hole 22x30 mm



**3319139 RED THREE-POLE SWITCH 16A 250V**  
16(4)A 250V  
with indicator light and button protection cap  
max temperature 120°C  
mounting hole 11x30 mm



**3319780 BLOCK CONNECTION WHITE 22x30 mm**



ANIMO 02865



Suitable for:

**3319779 BLOCK CONNECTIONS BLACK 22x30 mm**



**3186636 GASKET FOR SWITCH**  
inner size 22x32 mm  
internal size 22x32 mm



**1319203 SWITCH 1-POLE GREEN 16A 250V**  
16(4)A 250V - with indicator light  
silkscreen printing 0 - I  
temperature max 120°C  
mounting hole 11x30 mm



ANIMO A02174

**3319779 BLOCK CONNECTIONS BLACK 22x30 mm**



**1319936 PROTECTIVE SWITCH COVER**  
external dimensions 36x18 mm  
for switch with mounting hole 11x30 mm



# ANIMO



Suitable for:

**3319781 CONNECTION BLOCK BLACK 11x30 mm**



**1319936 PROTECTIVE SWITCH COVER**  
external dimensions 36x18 mm  
for switch with mounting hole 11x30 mm



**3319780 BLOCK CONNECTION WHITE 22x30 mm**



**3319781 CONNECTION BLOCK BLACK 11x30 mm**





Suitable for:

# ANIMO



Suitable for:

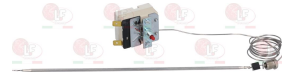
## Thermostats

**1444011 BULB HOLDING CLIP**  
for heating element thermostat  
for pipe  $\varnothing$  8.5 mm - for bulb  $\varnothing$  3.1 mm



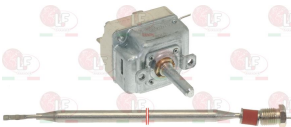
ANIMO 06336

**3444782 SINGLE-PHASE THERMOSTAT 132°C**  
with manual reset  
capillary length 850 mm - 16A 230V  
bulb  $\varnothing$  3.1x250 mm - with adapter nipple bland M9x1



ANIMO 03093

**1444012 THERMOSTAT SINGLE-PHASE 30-95°C**  
D-shaped pin  $\varnothing$  6x4.6 mm  
capillary length 850 mm - 16A 250V  
bulb  $\varnothing$  6x140 mm - with stuffing gland fitting M9x1



ANIMO 03090



The data herewith contained may change without notice and LF SpA cannot be held responsible for possible errors stated or resulting by the use of this document. All rights reserved. No part of this publication may be reproduced without written permission by LF SpA.



## Distributing Components, Spare Parts & Accessories in original quality worldwide

- 
- LF SpA HEADQUARTERS**  
via Voltri, 80 - 47522 Cesena (FC) ITALY  
Tel. +39 0547 34 11 11 - Fax +39 0547 34 11 10  
[www.lfircambi724.it](http://www.lfircambi724.it) - [info@lfircambi.it](mailto:info@lfircambi.it)  
Export Dept. Tel. +39 0547 34 11 50 - Fax +39 0547 34 11 55  
[www.lfspareparts724.com](http://www.lfspareparts724.com) - [export@lfspareparts.com](mailto:export@lfspareparts.com)
- LF SpA HOUSEHOLD COMPONENTS DIVISION**  
Via Padriciano, 99 - AREA Science Park - 34149 Trieste (TS) ITALY  
Tel. +39 0547 34 12 42 - Fax +39 0547 34 12 48  
[www.lfspareparts724.com](http://www.lfspareparts724.com) - [info@lfspareparts.com](mailto:info@lfspareparts.com)
- EPGC Sas FRANCE**  
13, Rue des Forts - 59960 Neuville en Ferrain  
Tel. +33 (0)3 20 25 06 21 - Fax +33 (0)3 20 25 34 12  
[www.epgc.com](http://www.epgc.com) - [epgc@epgc.com](mailto:epgc@epgc.com)
- LF GmbH GERMANY**  
Junkersstrasse, 3 - D-82178 Puchheim - München  
Tel. +49 89 89 45 78 66 - Fax +49 89 89 45 78 88  
[www.lfersatzteile724.de](http://www.lfersatzteile724.de) - [info@lfersatzteile.de](mailto:info@lfersatzteile.de)
- LF China REPUBLIC OF CHINA**  
Room 403, No.2, Huadu Mansion, Lane 422, Huanghua Rd.  
Minhang Dist. - 201103 Shanghai  
Tel. +86 (0)21 33 53 66 31 - Fax +86 (0)21 33 53 66 32  
[www.lfspareparts724.com](http://www.lfspareparts724.com) - [china@lfspareparts.com](mailto:china@lfspareparts.com)
- OOO LF RUSSIAN FEDERATION**  
Ul. Anatoliya Zhivova, 8 - office 1 - 123100 Moscow  
Tel./Fax +7 495 725 26 53  
[www.lfspareparts724.ru](http://www.lfspareparts724.ru) - [info@lfspareparts.ru](mailto:info@lfspareparts.ru)
- LF Repuestos Horeca S.L.U. SPAIN**  
Poligono Industrial Carpetania - C/Miguel Faraday, 8 - 28906 Getafe  
Tel. +34 91 477 91 00 - Fax +34 91 477 90 81  
[www.lfrepuestos-horeca724.es](http://www.lfrepuestos-horeca724.es) - [info@lfrepuestos.es](mailto:info@lfrepuestos.es)
- LF Scandinavia Aps - LF Spareparts S.p.A. DENMARK**  
Nupark, 51 - 7500 Holstebro  
Tel. +45 70 70 77 33  
[www.lfspareparts724.dk](http://www.lfspareparts724.dk) - [denmark@lfspareparts.dk](mailto:denmark@lfspareparts.dk)
- LF SpA Cesena (IT) Swiss Branch Steinhausen SWITZERLAND**  
Sennweidstrasse, 45 - CH-6312 Steinhausen  
Tel. +41 (0)41 760 15 80/1 - Fax +41 (0)41 760 15 85  
[www.lfersatzteile724.ch](http://www.lfersatzteile724.ch) - [info@lfersatzteile.ch](mailto:info@lfersatzteile.ch)
- LF Spare Parts Ltd. UNITED KINGDOM**  
A10a Lakeside Business Park, Broadway Lane  
South Cerney, Gloucestershire GL7 5XL  
Tel. +44 (0)1285 86 16 25 - Fax +44 (0)1285 86 39 49  
[www.lfspareparts724.co.uk](http://www.lfspareparts724.co.uk) - [info@lfspareparts.co.uk](mailto:info@lfspareparts.co.uk)
- LF Central Est Europe S.r.o. CZECH REPUBLIC**  
Antala Staska 1859/34  
14000 Praha 4 - KRC  
Tel. +420 730 156 910  
[www.lfspareparts724.cz](http://www.lfspareparts724.cz) - [info@lfspareparts.cz](mailto:info@lfspareparts.cz)
- LF SPARE PARTS INC. USA**  
Legal address:  
155 Office Plaza Dr - Suite A - Tallahassee, FL 32301  
Business/Mailing address:  
1100 South Tower, 225 Peachtree St., N.E. - Atlanta, GA 30303, USA  
Tel. +1-404-525-2600 - Fax +1-404-586-3528  
[www.lfspareparts724.us](http://www.lfspareparts724.us) - [info@lfspareparts.us](mailto:info@lfspareparts.us)  
Tel. West Coast and Midwest: 206-349-1525 Sauro  
Tel. East Coast and the Caribbean: 786-817-1764 Luis
- 
- AUSTRALIA AND NEW ZEALAND**  
[www.lfspareparts724.com](http://www.lfspareparts724.com)  
[andrea.calvio@lfspareparts.com](mailto:andrea.calvio@lfspareparts.com)
- AUSTRIA**  
[www.lfersatzteile724.at](http://www.lfersatzteile724.at)  
[info@lfersatzteile.at](mailto:info@lfersatzteile.at)
- BALKAN COUNTRIES**  
[www.lfspareparts724.com](http://www.lfspareparts724.com)  
[matija.ramov@lfspareparts.com](mailto:matija.ramov@lfspareparts.com)
- BALTIC COUNTRIES**  
[www.lfspareparts724.com](http://www.lfspareparts724.com)  
[inara.silina@lfspareparts.com](mailto:inara.silina@lfspareparts.com)
- LATIN AMERICA AND THE CARRIBEANS**  
[www.lfrepuestos-horeca724.es](http://www.lfrepuestos-horeca724.es)  
[export@lfrepuestos.es](mailto:export@lfrepuestos.es)
- POLAND**  
[www.lfspareparts724.pl](http://www.lfspareparts724.pl)  
[info@lfspareparts.pl](mailto:info@lfspareparts.pl)
- SOUTH KOREA**  
[www.lfspareparts724.com](http://www.lfspareparts724.com)  
[fabio.doni@lfspareparts.com](mailto:fabio.doni@lfspareparts.com)
- TURKEY**  
[www.lfyedekparca724.com](http://www.lfyedekparca724.com)  
[export@lfspareparts.com](mailto:export@lfspareparts.com)