



Spare parts for the professional sector: Cooking equipment



Suitable for:

AMBASSADE



This catalogue is automatically generated.
Therefore, the sequence of the items might
not be always shown at best.
Updates will be issued in case of additions
and/or amendments.

Suitable universal spare parts may not be included





Suitable for:

AMBASSADE



Suitable for:

Air regulators

3025730 AIR CONTROL \varnothing 26 mm
internal \varnothing 24 mm



AMBASSADE 6550821

3025729 AIR CONTROL \varnothing 38 mm



AMBASSADE 6517160

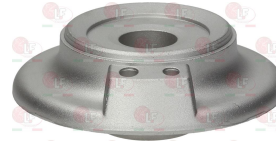
Burners, flame spreaders and accessories

3025734 BURNER BASE \varnothing 45 mm 1.5Kw
height 38.5 mm
for Pot stove gas (AMBASSADE) CG1052P



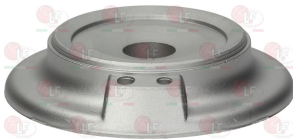
AMBASSADE 65640003

3025735 BURNER BASE \varnothing 68 mm 3Kw
height 38.5 mm
for Pot stove gas (AMBASSADE) CG1052P



AMBASSADE 65640004

3025736 BURNER BASE \varnothing 80.5 mm 4Kw
height 38.5 mm
for Pot stove gas (AMBASSADE) CG1052P



AMBASSADE 65640005

3025737 BURNER BASE \varnothing 98 mm 5Kw
height 38.5 mm
for Pot stove gas (AMBASSADE) CG1052P



AMBASSADE 64640006

AMBASSADE 65640006

3025798 BURNER BASE RH 3Kw
height 93 mm
burner cap internal \varnothing 61 mm
for Kitchen gas (AMBASSADE) CG1051B - CG1052G



AMBASSADE 5039142

3025726 BURNER BASE 1.5Kw
height 93 mm
burner cap internal \varnothing 39 mm
for Kitchen gas (AMBASSADE) CG1051B
for Pot stove gas (AMBASSADE) CG1052B



AMBASSADE 5039141



Suitable for:

Suitable for:

3025725 BURNER BASE 4Kw
 height 93 mm
 burner cap internal \varnothing 72 mm
 for Kitchen gas (AMBASSADE) CG1051B - CG1052G



AMBASSADE 5039143

3025724 BURNER BASE 5Kw
 height 147 mm
 burner cap internal \varnothing 95 mm
 for Kitchen gas (AMBASSADE) CG1051B - CG1052G
 for Kitchen (AMBASSADE) ASG10502



AMBASSADE 5039144

3025732 BURNER CAP \varnothing 106.5 mm 5Kw
 for Pot stove gas (AMBASSADE) CG1052P



AMBASSADE 65330004

AMBASSADE 65330008

AMBASSADE 65350008

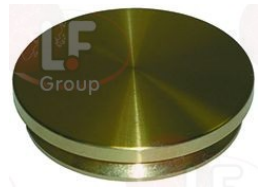
3025737 BURNER BASE \varnothing 98 mm 5Kw
 height 38.5 mm
 for Pot stove gas (AMBASSADE) CG1052P



AMBASSADE 64640006

AMBASSADE 65640006

3025738 BURNER CAP \varnothing 54.5 mm 1.5Kw
 for Pot stove gas (AMBASSADE) CG1052P



AMBASSADE 65330002

AMBASSADE 65330005

3025734 BURNER BASE \varnothing 45 mm 1.5Kw
 height 38.5 mm
 for Pot stove gas (AMBASSADE) CG1052P



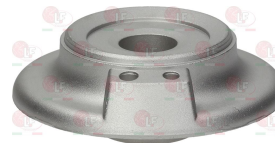
AMBASSADE 65640003

3025739 BURNER CAP \varnothing 71.5 mm 3Kw
 for Pot stove gas (AMBASSADE) CG1052P



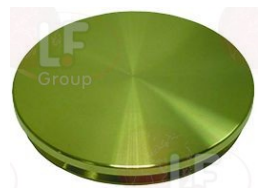
AMBASSADE 65330006

3025735 BURNER BASE \varnothing 68 mm 3Kw
 height 38.5 mm
 for Pot stove gas (AMBASSADE) CG1052P



AMBASSADE 65640004

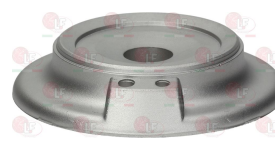
3025740 BURNER CAP \varnothing 89.5 mm 4Kw
 for Pot stove gas (AMBASSADE) CG1052P



AMBASSADE 65330003

AMBASSADE 65330007

3025736 BURNER BASE \varnothing 80.5 mm 4Kw
 height 38.5 mm
 for Pot stove gas (AMBASSADE) CG1052P



AMBASSADE 65640005



Suitable for:

AMBASSADE



3025670 FLAME SPREADER ø 100 mm 5Kw



AMBASSADE 6528204

3025724 BURNER BASE 5Kw
height 147 mm
burner cap internal ø 95 mm
for Kitchen gas (AMBASSADE) CG1051B - CG1052G
for Kitchen (AMBASSADE) ASG10502



AMBASSADE 5039144

3025727 VENTURI SUPPORT
ø 26.5 mm - height 34 mm



AMBASSADE 5014741

3025667 FLAME SPREADER ø 45 mm
for Kitchen gas (AMBASSADE) CG1051B - CG1052G



AMBASSADE 6528202

3025726 BURNER BASE 1.5Kw
height 93 mm
burner cap internal ø 39 mm
for Kitchen gas (AMBASSADE) CG1051B
for Pot stove gas (AMBASSADE) CG1052B



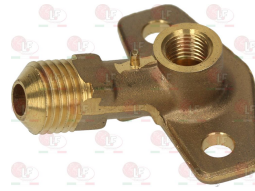
AMBASSADE 5039141

Suitable for:
3025729 AIR CONTROL ø 38 mm



AMBASSADE 6517160

3025723 NOZZLE HOLDER RIGHT BURNER



AMBASSADE 6530915

3025728 VENTURI SUPPORT
ø 38 mm - height 42 mm



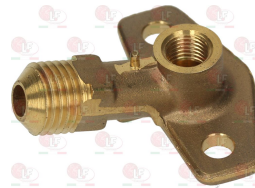
AMBASSADE 6516862

3025730 AIR CONTROL ø 26 mm
internal ø 24 mm



AMBASSADE 6550821

3025723 NOZZLE HOLDER RIGHT BURNER



AMBASSADE 6530915



Suitable for:

3025727 VENTURI SUPPORT
ø 26.5 mm - height 34 mm



AMBASSADE 5014741

3025668 FLAME SPREADER ø 65 mm
for Kitchen gas (AMBASSADE) CG1051B - CG1052G



AMBASSADE 6528203

3025798 BURNER BASE RH 3Kw
height 93 mm
burner cap internal ø 61 mm
for Kitchen gas (AMBASSADE) CG1051B - CG1052G



AMBASSADE 5039142

3025727 VENTURI SUPPORT
ø 26.5 mm - height 34 mm



AMBASSADE 5014741

3025669 FLAME SPREADER ø 78 mm 4Kw



AMBASSADE 6517430

AMBASSADE



Suitable for:

3025728 VENTURI SUPPORT
ø 38 mm - height 42 mm



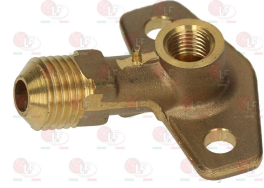
AMBASSADE 6516862

3025730 AIR CONTROL ø 26 mm
internal ø 24 mm



AMBASSADE 6550821

3025723 NOZZLE HOLDER RIGHT BURNER



AMBASSADE 6530915

3025728 VENTURI SUPPORT
ø 38 mm - height 42 mm



AMBASSADE 6516862

3025730 AIR CONTROL ø 26 mm
internal ø 24 mm



AMBASSADE 6550821



Suitable for:

3025725 BURNER BASE 4Kw
height 93 mm
burner cap internal \varnothing 72 mm
for Kitchen gas (AMBASSADE) CG1051B - CG1052G



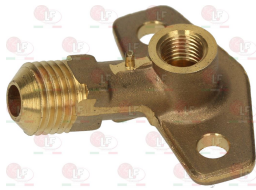
AMBASSADE 5039143

3025727 VENTURI SUPPORT
 \varnothing 26.5 mm - height 34 mm



AMBASSADE 5014741

3025723 NOZZLE HOLDER RIGHT BURNER



AMBASSADE 6530915

3025728 VENTURI SUPPORT
 \varnothing 38 mm - height 42 mm



AMBASSADE 6516862

AMBASSADE



Suitable for:

3025723 NOZZLE HOLDER RIGHT BURNER



AMBASSADE 6530915

3025728 VENTURI SUPPORT
 \varnothing 38 mm - height 42 mm



AMBASSADE 6516862

3025727 VENTURI SUPPORT
 \varnothing 26.5 mm - height 34 mm



AMBASSADE 5014741

Buzzers

3446189 BUZZER FOR TIMER
48-250V 50Hz
continuous sound -70/85dB
faston connection 6,3 mm - \varnothing 28 mm

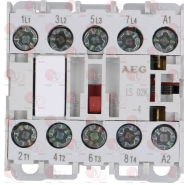


AMBASSADE 65290012



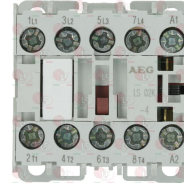
Contactors

3446223 CONTACTOR AEG LS02K400
 6A 400V 2.2Kw - coil 230V 50/60Hz
 4 normally open contacts
 for Kitchen electric (AMBASSADE) CFE705RT
 CFE714RT



AMBASSADE 65223001

3454063 CONTACTOR AEG LS02K400
 6A 400V 2.2Kw - coil 400V 50/60Hz
 4 normally open contacts
 for Fryer electric (AMBASSADE) CME626FR



AMBASSADE 65223002

3454062 CONTACTOR BENEDIKT/JAGER IMO MC14N-S-10
 coil 14A 400V 50/60Hz 5.5Kw
 3 NO contacts
 1 NO auxiliary contact
 for Fryer electric (AMBASSADE) CME626FR



AMBASSADE 65223009

Door catches

3242299 CATCH 6195 59 mm - 37 mm
 mounting distance 50 mm - 28 mm
 RAHRBACH



AMBASSADE 65132002

3242298 CATCH 6195 69 mm - 42 mm
 mounting distance 57 mm - 30 mm
 RAHRBACH



AMBASSADE 6532934

3242747 BLACK SPACER 42x12 mm
 height 6 mm - distance between holes 30 mm





Suitable for:

AMBASSADE



Suitable for:

Drain taps and accessories

- 3356141 BALLCOCK VALVE \varnothing 3/4"MF**
 DN20 PN40
 for Fryer electric (AMBASSADE) CME415FR - CME416FR
 CME434FR - CME625FR - CME626FR



AMBASSADE 65101004

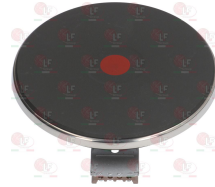
Electric hot plates

- 3311092 ELECTRIC HOT PLATE \varnothing 145 mm 1500W 230V**
 terminal block electric connections
 with STAINLESS steel edge 8 mm
 for electric cooking top



AMBASSADE 6517745

- 3311096 ELECTRIC HOT PLATE \varnothing 180 mm 2000W 230V**
 terminal block electric connections
 with STAINLESS steel edge 8 mm
 for electric cooking top



AMBASSADE 6550952

- 3311098 ELECTRIC HOT PLATE \varnothing 220 mm 2000W 230V**
 "ECODESIGN" MODEL
 electrical screw connections
 with STAINLESS steel edge
 for electric cooking top



AMBASSADE 6550953

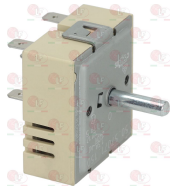
- 3311100 ELECTRIC HOT PLATE \varnothing 220 mm 2600W 230V**
 terminal block electric connections
 with STAINLESS steel edge
 for electric cooking top



AMBASSADE 6527688

Energy regulators

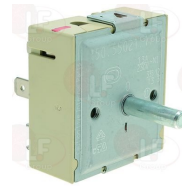
- 3350069 ENERGY REGULATOR**
 contact capacity 240V 13A
 max temperature 125°C
 D-shaped pin \varnothing 6x4.6 mm
 for Grill (AMBASSADE)



AMBASSADE 65225003

AMBASSADE 6535760

- 3350078 POWER REGULATOR**
 contacts capacity 230V 13A
 maximum temperature 125 °C
 D-shaped pin 6x4.6 mm
 for Pot stove electric (AMBASSADE) CE841VRT



AMBASSADE 65225007

AMBASSADE 6535287

Fryer baskets and accessories

3055695 FRYER BASKET 290x200x90 mm
made of chrome-plated iron
for Fryer (AMBASSADE) 413FR - 415FR - 416FR
418FR - 626FR - 628FR



AMBASSADE 6536432

3055696 FRYER BASKET 330x270x120 mm
made of chrome-plated iron
for Fryer electric (AMBASSADE) CME434FR



AMBASSADE 6537401

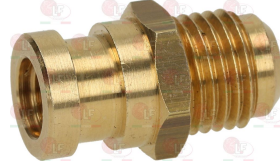
Gas burners

3025731 BURNER 360x175 mm
with air regulator
for Kitchen gas (AMBASSADE) CG831CF - CG831G



AMBASSADE 8832998

3025733 NOZZLE HOLDER \varnothing 10 mm
nozzle thread M14x1.5 mm
filettatura ugello M10x1 mm
for Kitchen gas (AMBASSADE) CG831CF - CG831G



AMBASSADE 6551764

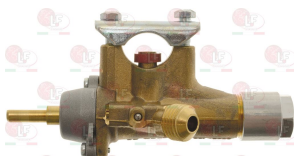
3025733 NOZZLE HOLDER \varnothing 10 mm
nozzle thread M14x1.5 mm
filettatura ugello M10x1 mm
for Kitchen gas (AMBASSADE) CG831CF - CG831G



AMBASSADE 6551764

Gas taps and accessories

3348153 GAS TAP COPRECI CAL5200
without pilot flame
clamp connection for pipe \varnothing 21 mm
outlet fitting M14x1.5 mm
thermocouple connection M8x1
pin length 25 mm
D-shaped pin \varnothing 6x4.6 mm
for Kitchen (AMBASSADE) GFR1033T



AMBASSADE 65103025

AMBASSADE 6539140

AMBASSADE 6551114

3186789 TAP GASKET \varnothing 11x7x3 mm



AMBASSADE 6552845



Suitable for:

AMBASSADE



Suitable for:

Gaskets and seals

3186789 TAP GASKET \varnothing 11x7x3 mm



AMBASSADE 6552845

Gaskets for oven door

3786626 HORIZONTAL DOOR GASKET 870 mm
made of silicone elastomer
with fastening clips
profile dimensions 12x12 mm
COLOUR BLACK
for Kitchen gas (AMBASSADE) CG1051B
for Oven under cooktop (AMBASSADE) GFR10335-14B



AMBASSADE 65111010

3786330 OVEN DOOR GASKET 400x230 mm
made of silicone elastomer
with fastening clips - 3 sides
profile dimensions 12x12 mm
COLOUR BLACK
for Oven under cooktop electric (AMBASSADE)
CG1052GCT - CG641CT - CG641E - GC1052CFGCT
for Oven under cooktop gas (AMBASSADE) CG1052CF
for Oven under cooktop (AMBASSADE) CG1052P
44FRI10335-14GGO



AMBASSADE 65111002

3786331 OVEN DOOR GASKET 400x290 mm
made of silicone elastomer
with fastening clips - 3 sides
profile dimensions 12x12 mm
COLOUR BLACK
for Oven under cooktop (AMBASSADE) CLUNY



AMBASSADE 111022

AMBASSADE 65111022

3786329 OVEN DOOR GASKET 460x400 mm
made of silicone elastomer
with fastening clips - 3 sides
profile dimensions 12x12 mm
COLOUR BLACK
for Oven under cooktop electric (AMBASSADE)
CFE605RT



AMBASSADE 65111016



Suitable for:

3786625 OVEN DOOR GASKET 500x290 mm

made of silicone elastomer
with fastening clips - 3 sides
profile dimensions 12x12 mm
COLOUR BLACK
for Oven under cooktop electric (AMBASSADE) CE741E
for Oven under cooktop (AMBASSADE) CE1051VTR
GFR1033T



AMBASSADE 65111021

Suitable for:

3786328 OVEN DOOR GASKET 520x250 mm

made of silicone elastomer
with fastening clips - 3 sides
profile dimensions 12x12 mm
COLOUR BLACK
for Oven under cooktop electric (AMBASSADE)
CG1051EA - CG1051EAE - CG731E
for Oven under cooktop gas (AMBASSADE) CG1051GA
CG1051GAE - CG731G
for Oven under cooktop (AMBASSADE) GRF07-T-33G
for Oven under cooktop electric (AMBASSADE)
44FRI07KI



AMBASSADE 65111001

3786315 OVEN DOOR GASKET 600x230 mm

made of silicone elastomer
with fastening clips - 3 sides
profile dimensions 12x12 mm
COLOUR BLACK
for Oven under cooktop (AMBASSADE) - Series 800



AMBASSADE 65111011

7101165 OVEN DOOR GASKET 600x300 mm

made of silicone elastomer
with fixing springs - 3 sides
profile size 12x12 mm
BLACK COLOUR
for Oven under cooktop gas (AMBASSADE) CG841



AMBASSADE 65111023

3876001 VERTICAL DOOR GASKET 220 mm

made of silicone elastomer
with fastening clips
profile dimensions 12x12 mm
COLOUR BLACK
for Oven under cooktop gas (AMBASSADE) AG1051B



AMBASSADE 65111008

Grids for kitchen

3185208 PAN SUPPORT GRID 510x260 mm

for Pot stove (AMBASSADE)



AMBASSADE 8837024



Suitable for:

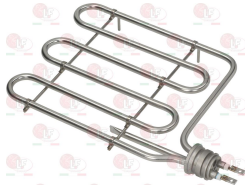
AMBASSADE



Suitable for:

Heating elements

7109484 HEATING ELEMENT 3500W 230V
length 260 mm - width 210 mm
for Fryer electric (AMBASSADE)
for Pasta cooker electric (AMBASSADE)



AMBASSADE 65211013

3455143 HEATING ELEMENT 1000W 230V
length 480 mm - width 210 mm
height 50 mm
for Fry top electric (AMBASSADE) CME410GL
CME410GR - CME410SLK - CME410SLR - CME610SLK
CME610SLR - CME610SRK



AMBASSADE 65211001

3455227 HEATING ELEMENT 1000W 230V
length 415 mm - width 210 mm
height 45 mm
operating ambient: dry
for Bain-marie electric (AMBASSADE) CME810M
for Bain-marie (AMBASSADE) CSE810M



AMBASSADE 65211007

3455142 HEATING ELEMENT 1100W 220V
length 330 mm - width 65 mm
height 75 mm
for Fry top electric (AMBASSADE) CME410G
CME410SKS - CME410SR



AMBASSADE 652208

AMBASSADE 653864222

7105128 HEATING ELEMENT 1100W 230V
length 467 mm - width 100 mm
height 57 mm
for Grill electric (AMBASSADE) CSE410GR



AMBASSADE 65211011

3455374 HEATING ELEMENT 1200W 230V
length 400 mm - width 100 mm
flange 110x23 mm
for Oven under cooktop electric (AMBASSADE) CE841
CE841VTR - GFRO08MIKKS



AMBASSADE 6532415

3455373 HEATING ELEMENT 12000W 400V
length 390 mm - width 270 mm
height 365 mm - fittings M12x1 mm
for Fryer electric (AMBASSADE) CME434FR



AMBASSADE 6536631



AMBASSADE



Suitable for:

3355127 HEATING ELEMENT 1600W 220V
 ø external 190 mm - internal ø 178 mm
 total height 65 mm
 flange 70x22 mm
 operating ambient: dry



AMBASSADE 6539168

Suitable for:

3186098 HEATING ELEMENT GASKET
 external dimensions 71x23 mm



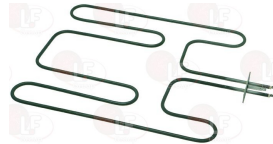
5040417 HEATING ELEMENT 1600W 230V
 length 405 mm - width 353 mm
 fittings M12x1 mm



AMBASSADE 65211037

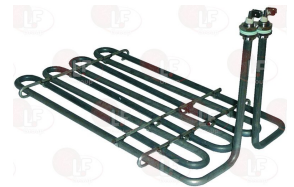
AMBASSADE 6532285

3455141 HEATING ELEMENT 1800W 230V
 length 370 mm - width 330 mm
 flange 70x22 mm
 for Oven under cooktop electric (AMBASSADE) AG641E



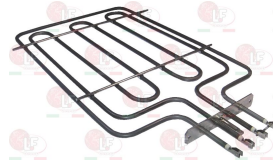
AMBASSADE 6536147

3455296 HEATING ELEMENT 2800W 230V
 length 345 mm - width 180 mm
 height 160 mm - fittings M12x1 mm
 for Fryer electric (AMBASSADE) CME413FR



AMBASSADE 6537366

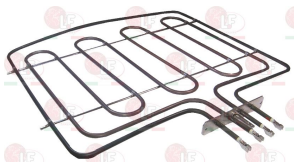
3455140 HEATING ELEMENT 3100W 220V
 length 380 mm - width 255 mm
 flange 127x22 mm
 for Oven under cooktop gas (AMBASSADE) CG1051
 CG1052 - CG641
 for Oven under cooktop (AMBASSADE) AG1052E



AMBASSADE 65211029

AMBASSADE 6530051

3455139 HEATING ELEMENT 4050W 230V
 overall length 460 mm - overall width 470 mm
 immersed length 400 mm
 flange 127x22 mm
 for Kitchen gas (AMBASSADE) CG741
 for Oven under cooktop gas (AMBASSADE) CG1051
 CG731 - CG831



AMBASSADE 65211030

AMBASSADE 6535970

3455371 HEATING ELEMENT 4500W 230V
 length 350 mm - width 200 mm
 height 190 mm - fittings M12x1 mm
 for Fryer electric (AMBASSADE) CME415FR
 GFR04E015FRNM
 for Fryer electric (AMBASSADE) GFR04E015FRNM



AMBASSADE 6536362

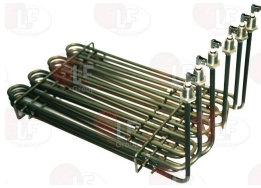


Suitable for:

AMBASSADE



3455370 HEATING ELEMENT 6000W 230V
length 340 mm - width 180 mm
height 190 mm - fittings M12x1 mm
for Fryer electric (AMBASSADE) CME416FR



AMBASSADE 6532917

3455372 HEATING ELEMENT 9000W 400V
length 390 mm - width 270 mm
height 210 mm - fittings M12x1 mm
for Fryer electric (AMBASSADE) CME419FR



AMBASSADE 6536630

3455226 HEATING ELEMENT 950W 230V
length 405 mm - width 95 mm
flange 110x22 mm
operating ambient: dry
for Bain-marie electric (AMBASSADE) AME410M
ASE410M



AMBASSADE 6530624

Hinges, catches and accessories

3053571 HINGE ASSEMBLY
for Oven under cooktop gas (AMBASSADE) AG1051B



AMBASSADE 7332993

3053457 HINGE ROLL HOLDER
mounting distance 94 mm - overall length 120 mm
height 21 mm
for Oven under cooktop (AMBASSADE)
for Oven under cooktop (AMBASSADE) GFR10IKN
GFR1033T



AMBASSADE 50129052

AMBASSADE 6532729

3053441 RIGHT-LEFTHAND DOOR HINGE FOR OVEN
mounting distance 120 mm - overall length 153
height 153 mm
for Oven under cooktop (AMBASSADE)
for Oven under cooktop (AMBASSADE) GFR10IKN



AMBASSADE 6532728

3053457 HINGE ROLL HOLDER
mounting distance 94 mm - overall length 120 mm
height 21 mm
for Oven under cooktop (AMBASSADE)
for Oven under cooktop (AMBASSADE) GFR10IKN
GFR1033T



AMBASSADE 50129052

AMBASSADE 6532729



Ignitors

- 3001007 PIEZO IGNITER**
 a \varnothing 22 mm hole is needed for the assembly
 faston M \varnothing 2.4 mm



AMBASSADE 6535997

Indicator lights

- 3221583 INDICATOR LIGHT GREEN 220V**
 mounting hole 27.2 x 22.2 mm
 universal application
 for Kitchen electric (AMBASSADE) CFE705RT
 CFE714RT



AMBASSADE 6532194

AMBASSADE 6533194

- 3221584 INDICATOR LIGHT ORANGE 220V**
 mounting hole 27.2 x 22.2 mm
 universal application
 for Kitchen electric (AMBASSADE) CFE705RT
 CFE714RT



AMBASSADE 6532193

- 3221094 INDICATOR LIGHT ORANGE 230V**
 \varnothing head 14 mm - \varnothing hole 11.5 mm - 120°C



AMBASSADE 6540106

- 3221170 INDICATOR LIGHT ORANGE 230V**
 head \varnothing 10 mm - hole \varnothing 9 mm - 120°C



AMBASSADE 6537607

- 3221177 INDICATOR LIGHT WHITE 230V**
 head \varnothing 10 mm - \varnothing hole 9 mm - 120°C



- 3221176 INDICATOR LIGHT GREEN 230V**
 head \varnothing 10 mm - hole \varnothing 9 mm - 120°C





AMBASSADE



Suitable for:

3221541 INDICATOR LIGHT ORANGE 400V
ø head 13.5 mm - ø hole 10 mm
wire connection length 200 mm



AMBASSADE 5322000487

AMBASSADE 6540107

Suitable for:

3221284 INDICATOR LIGHT RED 250V
head ø 10 mm - hole ø 9 mm - 85°C
for Kitchen (AMBASSADE) 44FRI07KI



AMBASSADE 6537606

3221630 INDICATOR LIGHT YELLOW COMPLETE 380V
mounting hole ø 22 mm
for high temperatures



AMBASSADE F14652

Knobs

3241761 BLACK KNOB ø 49 mm SILK-SCREEN PRINTED
D-shaped hole 6x4.6 mm
for THERMOSTATIC GAS VALVE



AMBASSADE 88044009

3241763 KNOB RED RING ø 57 mm



AMBASSADE 65043001

3241787 BLACK KNOB ø 49 mm 1-15
D-shaped hole 6x4.6 mm
for Fryer electric (AMBASSADE) CME413FR



AMBASSADE 88044008

3241637 BLACK KNOB ø 50 mm 60°-200°C
D-shaped hole 6x4.6 mm
for EGO thermostat



AMBASSADE 6527735

3241788 KNOB BLACK ø 49 mm
D-shaped hole 6x4,6 mm
for Kitchen electric (AMBASSADE) CFE705RT
CFE714RT
for Oven under cooktop (AMBASSADE) 1FRFE07CT



AMBASSADE 65044000

AMBASSADE 88044000

3241764 KNOB BLACK ø 49 mm MINI-MAX
D-shaped hole 6x4.6 mm
for energy regulator



AMBASSADE 88044007



Suitable for:

3241762 KNOB BLACK ø 49 mm SILKSCREEN PRINTED
D-shaped hole 6x4.6 mm
for GAS VALVE



AMBASSADE 88044006

Suitable for:

3241891 KNOB BLACK ø 49 mm 1-10-MAX
D-shaped hole 6x4.6 mm
for energy regulator
for Pot stove electric (AMBASSADE) CE841VRT



AMBASSADE 88044001

3241765 KNOB BLACK ø 49 mm 50-200°C
D-shaped hole 6x4.6 mm
for selector switch



AMBASSADE 88044002

3241760 RING RED FOR KNOB ø 55 mm



AMBASSADE 65043002

3241763 KNOB RED RING ø 57 mm



AMBASSADE 65043001

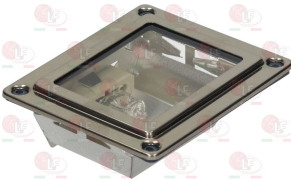
3241760 RING RED FOR KNOB ø 55 mm



AMBASSADE 65043002

Lamp receptacles and spare parts

5035079 LAMP RECEPTACLE WITH LAMP G9 40W 230V
external dimensions 96x80 mm
max temperature 300°C



AMBASSADE 65232002

3221172 FRAME FOR OVEN LAMP RECEPTACLE
external dimensions 96x80 mm



3186173 GASKET FOR OVEN LAMP RECEPTACLE
external dimensions 93x79 mm



3221173 GLASS FOR OVEN LAMP RECEPTACLE
external dimensions 73x58 mm





Suitable for:

D221004 HALOGEN LAMP OSRAM G9 40W 230V SMEG
OSRAM
max. temperature 200°C



AMBASSADE



Suitable for:

3621005 LAMP CAP FOR HALOGEN G9 40W 230V
external dimensions 74x59 mm
max. temperature 300°C



Level probes

3341071 LEVEL PROBE \varnothing 1/4" M-250 mm
for Boiling pan gas (AMBASSADE) PRO900G1MF



AMBASSADE 02665A

Magnet groups

3182011 MAGNETIC UNIT PEL SMALL HEAD
head \varnothing 15 mm - end piece \varnothing 11 mm - length 44 mm
for PEL tap models 20-21
for EGA tap model 25213
for JUNKERS tap model CH110



AMBASSADE 6551089

Motors

3240989 MOTOR WITH FAN 32W 230V 50Hz
TYPE R2A150-AC01-13
fan \varnothing 150 mm
for Kitchen gas (AMBASSADE) CG741
for Oven under cooktop gas (AMBASSADE) CG1051
CG1052 - CG731 - CG831



AMBASSADE 6539352

3240512 MOTOR WITH FAN 32W 230V 50Hz 0.27A
TYPE R2K150-AC01-15
fan \varnothing 150 mm



AMBASSADE 6539815



Nozzles

3500322 CONICAL GAS JET M9x1 ø 0.65 mm
for 1,5 Kw BURNER
height 93 mm



AMBASSADE

3500320 CONICAL GAS JET M9x1 ø 0.80 mm
for 3 Kw BURNER
height 93 mm



AMBASSADE

3500324 CONICAL GAS JET M9x1 ø 0.90 mm
for 4 Kw BURNER
height 121 mm



AMBASSADE

3500343 CONICAL GAS JET M9x1 ø 0.95 mm
for Pot stove gas (AMBASSADE) FT010



AMBASSADE 65INJ095

3500323 CONICAL GAS JET M9x1 ø 1.00 mm
for 1,5 Kw BURNER
height 93 mm



AMBASSADE

3500321 CONICAL GAS JET M9x1 ø 1.30 mm
for 3 Kw BURNER
height 93 mm



AMBASSADE

3500342 CONICAL GAS JET M9x1 ø 1.35 mm
for Pot stove gas (AMBASSADE) FT010



AMBASSADE 65INJ135

O-Ring and ORM gaskets

1186480 O-RING 04112 EPDM
ring thickness 3.53 mm - internal ø 28.17 mm
for Pasta cooker electric (AMBASSADE) CME410CP



AMBASSADE 65119014



Suitable for:

AMBASSADE



Suitable for:

Radiant heating elements

3311108 RADIANT HEATING ELEM. ø 230mm 2100W 230V
 faston electric connections
 complete with energy adjuster
 for glass-ceramic cooking hob
 for Pot stove electric (AMBASSADE) CE841VRT



AMBASSADE 6532987

3311107 RADIANT HEATING ELEM. ø 230mm 2200W 230V
 faston electric connections
 complete with energy adjuster
 for glass-ceramic cooking hob
 for Pot stove electric (AMBASSADE) CE841VRT



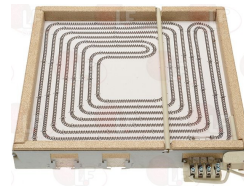
AMBASSADE 6535285

3311106 RADIANT HEATING ELEM. ø165mm 1200W 230V
 faston electric connections
 complete with energy adjuster
 for glass-ceramic cooking hob
 for Pot stove electric (AMBASSADE) CE841VRT



AMBASSADE 6535286

3311105 RADIANT HEATING ELEMENT 3500W 240V
 dimensions 300x300 mm
 radiant size 270x270 mm
 terminal block electric connections
 for glass-ceramic cooking hob
 NO PAN DETECTION SENSOR
 for Pot stove electric (AMBASSADE) CE841VRT



AMBASSADE 6535283

Selector switches

3057026 SELECTOR SWITCH 0-1 POSITIONS
 contact capacity 16A 250V - max 150°C
 D shaft ø 6x4.6 mm
 for Oven under cooktop electric (AMBASSADE) CE1051
 for Oven under cooktop gas (AMBASSADE) CG1051



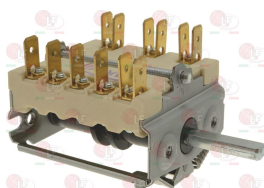
AMBASSADE 6528979

3057205 SELECTOR SWITCH 0-6 POSITIONS
 contact capacity 16A 250V - max 150°C
 D shaft ø 6x4.6 mm



AMBASSADE 6553435

3057256 SELECTOR SWITCH 4 POSITIONS
 contact capacity 16A 250V - max 150°C
 D-shaped pin ø 6x4.6 mm
 for Oven under cooktop electric (AMBASSADE) CE1051
 CE1052 - CE641 - CE741 - CE841
 for Oven under cooktop gas (AMBASSADE) CG1051
 CG1052 - CG641 - CG731 - CG831
 for Oven under cooktop (AMBASSADE) GFR10IKM
 1FRFE07-CT 44FRI33T-145RO



AMBASSADE 6552194



Solenoid valves

3120407 SOLEN. VALVE T&P 2 WAY 180°
230V 50/60Hz - max. temperature 90°C
inlet 3/4" - two outlets ø 10.5 mm

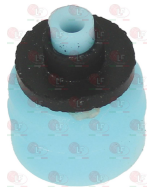


AMBASSADE 65042005

3120608 ADJUSTER FOR OUTLET T&P DARK BROWN
flow rate 1.2 L/min - tolerance +/- 25%



3120391 ADJUSTER FOR OUTLET T&P LIGHT BLUE
flow rate 1 L/min - tolerance +/- 25%



3120423 ADJUSTER FOR OUTLET T&P ORANGE
flow rate 0.5 L/min - tolerance +/- 25%



3120386 ADJUSTER FOR OUTLET T&P WHITE
flow rate 0.8 L/min - tolerance +/- 25%



D120056 ADJUSTER INLET T&P BRONZE
flowrate 12 L/min



3120421 ADJUSTER FOR OUTLET T&P BLACK
flow rate 5 L/min - tolerance +/- 20%



3120568 ADJUSTER FOR OUTLET T&P GREEN
flow rate 3 L/min - tolerance +/- 25%



3120387 ADJUSTER FOR OUTLET T&P LIGHT BROWN
flow rate 1.5 L/min - tolerance +/- 25%



3120424 ADJUSTER FOR OUTLET T&P RED
flow rate 0.25 L/min - tolerance +/- 25%



3120422 ADJUSTER FOR OUTLET T&P YELLOW
flow rate 2.5 L/min - tolerance +/- 25%



D120054 ADJUSTER INLET T&P GREY
flowrate 6 L/min





Suitable for:

D120057 ADJUSTER INLET T&P LIGHT BROWN
flowrate 16 L/min



D120052 ADJUSTER INLET T&P RED
flowrate 3 L/min



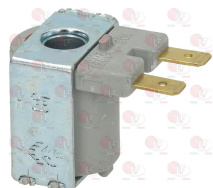
D120053 ADJUSTER INLET T&P YELLOW
flowrate 5.5 L/min



3120431 COIL T&P 12Vac 50/60Hz
for solenoid valves T&P



D120090 COIL T&P 120V 60Hz 8VA
for solenoid valves T&P



3120432 COIL T&P 24Vac 50/60Hz
for solenoid valves T&P



AMBASSADE



Suitable for:

D120058 ADJUSTER INLET T&P ORANGE
flowrate 20 L/min



D120055 ADJUSTER INLET T&P WHITE
flowrate 10 L/min



D120059 ADJUSTER OUTLET T&P BLUE
flow rate 8 L/min - tolerance +/-25%



D120092 COIL T&P 12Vdc
for solenoid valves T&P



3120433 COIL T&P 220V 50/60Hz
for solenoid valves T&P



D120093 COIL T&P 24Vdc
for solenoid valves T&P





Suitable for:

3120519 SOLENOID VALVE ODE REGOL. \varnothing 1/4" FF 220V
with fittings \varnothing 1/2" M - \varnothing 1/4" M for hose \varnothing 8 mm
coil '220/230V 50/60Hz 14.5VA



AMBASSADE 6532053

1120820 COIL ODE BDA08223DS 220/230V 50/60Hz
14.5 VA
width 30 mm - height 39 mm
length 42 mm



Suitable for:

3120374 coil ODE BDA08024DS 24V 50/60Hz 8W
width 30 mm - height 39 mm
length 42 mm



3120034 CONNECTOR LARGE F-FITTING
for coils



3120414 SOLENOID VALVE T&P 3-WAY 180°
230V 50/60Hz - max. temperature 90°C
inlet 3/4" with flowrate adjuster 10 L/min
three \varnothing 10.5 mm outlets



AMBASSADE 65109013

3120608 ADJUSTER FOR OUTLET T&P DARK BROWN
flow rate 1.2 L/min - tolerance +/- 25%



3120391 ADJUSTER FOR OUTLET T&P LIGHT BLUE
flow rate 1 L/min - tolerance +/- 25%



3120421 ADJUSTER FOR OUTLET T&P BLACK
flow rate 5 L/min - tolerance +/- 20%



3120568 ADJUSTER FOR OUTLET T&P GREEN
flow rate 3 L/min - tolerance +/- 25%



3120387 ADJUSTER FOR OUTLET T&P LIGHT BROWN
flow rate 1.5 L/min - tolerance +/- 25%





Suitable for:

3120423 ADJUSTER FOR OUTLET T&P ORANGE
flow rate 0.5 L/min - tolerance +/- 25%



3120386 ADJUSTER FOR OUTLET T&P WHITE
flow rate 0.8 L/min - tolerance +/- 25%



D120056 ADJUSTER INLET T&P BRONZE
flowrate 12 L/min



D120057 ADJUSTER INLET T&P LIGHT BROWN
flowrate 16 L/min



D120052 ADJUSTER INLET T&P RED
flowrate 3 L/min



D120053 ADJUSTER INLET T&P YELLOW
flowrate 5.5 L/min



AMBASSADE



Suitable for:

3120424 ADJUSTER FOR OUTLET T&P RED
flow rate 0.25 L/min - tolerance +/- 25%



3120422 ADJUSTER FOR OUTLET T&P YELLOW
flow rate 2.5 L/min - tolerance +/- 25%



D120054 ADJUSTER INLET T&P GREY
flowrate 6 L/min



D120058 ADJUSTER INLET T&P ORANGE
flowrate 20 L/min



D120055 ADJUSTER INLET T&P WHITE
flowrate 10 L/min



D120059 ADJUSTER OUTLET T&P BLUE
flow rate 8 L/min - tolerance +/- 25%





Suitable for:

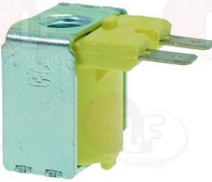
3120431 COIL T&P 12Vac 50/60Hz
for solenoid valves T&P



D120090 COIL T&P 120V 60Hz 8VA
for solenoid valves T&P



3120432 COIL T&P 24Vac 50/60Hz
for solenoid valves T&P



AMBASSADE



Suitable for:

D120092 COIL T&P 12Vdc
for solenoid valves T&P



3120433 COIL T&P 220V 50/60Hz
for solenoid valves T&P



D120093 COIL T&P 24Vdc
for solenoid valves T&P



Spark generators

3181004 SPARK GENERATOR 6 OUTLETS
220/240V - 50/60Hz
for Grill (AMBASSADE) CSG410GR



AMBASSADE 65226007

Springs

3250232 DOOR SPRING \varnothing 14x345 mm
for OVEN AG1051B



AMBASSADE 6551380



Suitable for:

AMBASSADE



Suitable for:

Switches

3319295 BIPOLAR SWITCH BLACK 16A 250V
16(4)A 250V - max. temperature 120°C
with indicator light with green led
mounting hole 22x30 mm



AMBASSADE 6540129

3319780 BLOCK CONNECTION WHITE 22x30 mm



3319779 BLOCK CONNECTIONS BLACK 22x30 mm



3319782 FRAME SAFETY 2 SIDES BLACK 22x30 mm



3319783 FRAME SAFETY 4 SIDES BLACK 22x30 mm



3319501 PUSH-BUTTON PROTECTION CAP
external dimensions 29x36 mm
for switches with mounting hole 22x30 mm



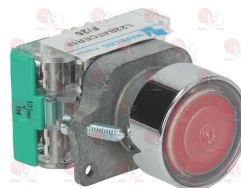
1319924 BIPOLAR SWITCH ORANGE 10A 250V
with indicator light
mounting hole 22x27 mm



AMBASSADE 65222009

AMBASSADE 6532192

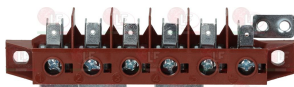
3319732 PUSH-BUTTON RED 8A 250V
1 contact NO
with push-button cap
mounting hole \varnothing 22 mm



AMBASSADE 03967A

Terminal blocks

3247009 TERMINAL BLOCK 6-POLES FV122/B 40A 600V
for cable max 6 mm²
operating temperature 150°C
nominal voltage 450 V
for Oven under cooktop electric (AMBASSADE) CE741E



AMBASSADE 6551785

Thermocouples and accessories

7106519 THERMOCOUPLE M8x1 120 cm COUPLING M8x1
for Pot stove gas (AMBASSADE)

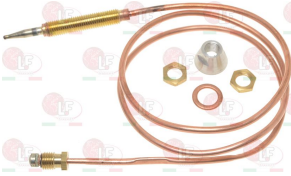
3440064 NUT FOR THERMOCOUPLE M8x1



AMBASSADE 6539896

3440139 THERMOCOUPLE M8x1 75 cm COUPLING M8x1
for Kitchen gas (AMBASSADE) CG1051B - CG1052G

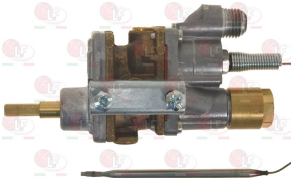
3440064 NUT FOR THERMOCOUPLE M8x1



AMBASSADE 6539895

Thermostatic gas valves

3348152 THERMOSTATIC TAP COPRECI
flange coupling \varnothing 21 mm
outlet fitting M14x1.5 mm
thermocouple fitting M8x1
bulb \varnothing 5x92 mm
capillary length 800 mm
D-shaped pin 6x4.6 mm
for Kitchen (AMBASSADE) AG1052P



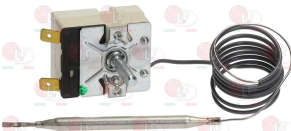
AMBASSADE 65103026

AMBASSADE 6551110

Thermostats

3444938 SINGLE-PHASE THERMOSTAT 100-175°C
D-shaped pin \varnothing 6x4.6 mm
covered capillary length 900 mm
bulb \varnothing 6x100 mm
for Fryer (AMBASSADE)

3241637 BLACK KNOB \varnothing 50 mm 60°-200°C
D-shaped hole 6x4.6 mm
for EGO thermostat



AMBASSADE 6528980

AMBASSADE 6527735



Suitable for:

AMBASSADE

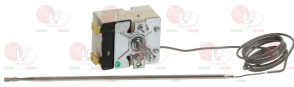


3443073 SINGLE-PHASE THERMOSTAT 100-680°C
 complete with auxiliary selector switch
 D-shaped pin \varnothing 6x4.6 mm
 covered capillary length 1100 mm - 16A 230V
 bulb \varnothing 4x230 mm
 for Oven under cooktop electric (AMBASSADE)
 CE841VTR



AMBASSADE 6535284

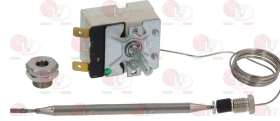
3444935 SINGLE-PHASE THERMOSTAT 50-300°C
 D-shaped pin \varnothing 6x4.6 mm
 covered capillary length 870 mm - 16A 250V
 bulb \varnothing 3x160 mm
 for Oven under cooktop electric (AMBASSADE) CE1051
 CE1052 - CE641 - CE741 - CE841
 for Oven under cooktop gas (AMBASSADE) CG1051
 CG1052 - CG641 - CG731 - CG831
 for Oven under cooktop (AMBASSADE) GFR10IKM
 GFR10335-14RE - 1FRFE07CT - 44FRI33T-145RO
 AG1052GE



AMBASSADE 6553670

Suitable for:

3444698 SINGLE-PHASE THERMOSTAT 30-110°C
 D-shaped pin \varnothing 6x4.6 mm
 capillary length 870 mm
 bulb \varnothing 6x113 mm - with adapter nipple bland M9x1
 for Oven under cooktop (AMBASSADE) 1051



AMBASSADE 6528195

3444939 THREE-PHASE THERMOSTAT 220°C
 with manual reset
 covered capillary length 900 mm - 20A 400V
 bulb \varnothing 6x110 mm
 for Fryer (AMBASSADE)
 for Fryer (AMBASSADE) GFR04E019FR



AMBASSADE 6537879

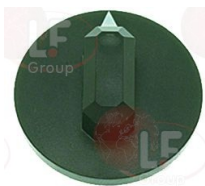
Timers

3446186 TIMER 15 MINUTES CD15
 mechanical movement with balance wheel
 manually set mechanical timer
 manually set cycle 15 minutes
 D-shaped pin \varnothing 6x4.6 mm



AMBASSADE 6527739

3241174 BLACK KNOB \varnothing 44 mm
 D-shaped hole 6x4.6 mm



3241173 BLACK KNOB \varnothing 44 mm
 D-shaped hole 6x4.6 mm



3241787 BLACK KNOB \varnothing 49 mm 1-15
 D-shaped hole 6x4.6 mm
 for Fryer electric (AMBASSADE) CME413FR



AMBASSADE 88044008



Suitable for:

Suitable for:

3397188 TIMER 90 MINUTES C10
manually set mechanical timer
90 minutes manually set cycle
contact capacity 16A 120V
1 normally open contact
1 normally closed contact
D-shaped pin \varnothing 6x4.6 mm
for Kitchen electric (AMBASSADE) CFE705RT



AMBASSADE 6532959

The data herewith contained may change without notice and LF SpA cannot be held responsible for possible errors stated or resulting by the use of this document. All rights reserved. No part of this publication may be reproduced without written permission by LF SpA.



Distributing Components, Spare Parts & Accessories in original quality worldwide

-
- LF SpA HEADQUARTERS**
via Voltri, 80 - 47522 Cesena (FC) ITALY
Tel. +39 0547 34 11 11 - Fax +39 0547 34 11 10
www.lfricambi724.it - info@lfricambi.it
Export Dept. Tel. +39 0547 34 11 50 - Fax +39 0547 34 11 55
www.lfspareparts724.com - export@lfspareparts.com
- LF SpA HOUSEHOLD COMPONENTS DIVISION**
Via Padriciano, 99 - AREA Science Park - 34149 Trieste (TS) ITALY
Tel. +39 0547 34 12 42 - Fax +39 0547 34 12 48
www.lfspareparts724.com - info@lfspareparts.com
- EPGC Sas FRANCE**
13, Rue des Forts - 59960 Neuville en Ferrain
Tel. +33 (0)3 20 25 06 21 - Fax +33 (0)3 20 25 34 12
www.epgc.com - epgc@epgc.com
- LF GmbH GERMANY**
Junkersstrasse, 3 - D-82178 Puchheim - München
Tel. +49 89 89 45 78 66 - Fax +49 89 89 45 78 88
www.lfersatzteile724.de - info@lfersatzteile.de
- LF China REPUBLIC OF CHINA**
Room 403, No.2, Huadu Mansion, Lane 422, Huanghua Rd.
Minhang Dist. - 201103 Shanghai
Tel. +86 (0)21 33 53 66 31 - Fax +86 (0)21 33 53 66 32
www.lfspareparts724.com - china@lfspareparts.com
- OOO LF RUSSIAN FEDERATION**
Ul. Anatoliya Zhivova, 8 - office 1 - 123100 Moscow
Tel./Fax +7 495 725 26 53
www.lfspareparts724.ru - info@lfspareparts.ru
- LF Repuestos Horeca S.L.U. SPAIN**
Poligono Industrial Carpetania - C/Miguel Faraday, 8 - 28906 Getafe
Tel. +34 91 477 91 00 - Fax +34 91 477 90 81
www.lfrepuestos-horeca724.es - info@lfrepuestos.es
- LF Scandinavia Aps - LF Spareparts S.p.A. DENMARK**
Nupark, 51 - 7500 Holstebro
Tel. +45 70 70 77 33
www.lfspareparts724.dk - denmark@lfspareparts.dk
- LF SpA Cesena (IT) Swiss Branch Steinhausen SWITZERLAND**
Sennweidstrasse, 45 - CH-6312 Steinhausen
Tel. +41 (0)41 760 15 80/1 - Fax +41 (0)41 760 15 85
www.lfersatzteile724.ch - info@lfersatzteile.ch
- LF Spare Parts Ltd. UNITED KINGDOM**
A10a Lakeside Business Park, Broadway Lane
South Cerney, Gloucestershire GL7 5XL
Tel. +44 (0)1285 86 16 25 - Fax +44 (0)1285 86 39 49
www.lfspareparts724.co.uk - info@lfspareparts.co.uk
- LF Central Est Europe S.r.o. CZECH REPUBLIC**
Antala Staska 1859/34
14000 Praha 4 - KRC
Tel. +420 730 156 910
www.lfspareparts724.cz - info@lfspareparts.cz
- LF SPARE PARTS INC. USA**
Legal address:
155 Office Plaza Dr - Suite A - Tallahassee, FL 32301
Business/Mailing address:
1100 South Tower, 225 Peachtree St., N.E. - Atlanta, GA 30303, USA
Tel. +1-404-525-2600 - Fax +1-404-586-3528
www.lfspareparts724.us - info@lfspareparts.us
Tel. West Coast and Midwest: 206-349-1525 Sauro
Tel. East Coast and the Caribbean: 786-817-1764 Luis
-
- AUSTRALIA AND NEW ZEALAND**
www.lfspareparts724.com
andrea.calvio@lfspareparts.com
- AUSTRIA**
www.lfersatzteile724.at
info@lfersatzteile.at
- BALKAN COUNTRIES**
www.lfspareparts724.com
matija.ramov@lfspareparts.com
- BALTIC COUNTRIES**
www.lfspareparts724.com
inara.silina@lfspareparts.com
- LATIN AMERICA AND THE CARRIBEANS**
www.lfrepuestos-horeca724.es
export@lfrepuestos.es
- POLAND**
www.lfspareparts724.pl
info@lfspareparts.pl
- SOUTH KOREA**
www.lfspareparts724.com
fabio.doni@lfspareparts.com
- TURKEY**
www.lfyedekparca724.com
export@lfspareparts.com