



Spare parts for the professional sector:
Cooking equipment



Suitable for:

ALTO-SHAAM



This catalogue is automatically generated.
Therefore, the sequence of the items might
not be always shown at best.
Updates will be issued in case of additions
and/or amendments.

*Suitable **universal spare parts** may not be included*





Suitable for:

ALTO-SHAAM



Suitable for:

Axial motor fans

3240501 AXIAL FAN SUNON 120x120x38 mm
ball bearings
230V 50/60Hz 22W 2850rpm
DP200A 2123XBT.GN



ALTO-SHAAM FA-3568

3805037 CABLE FOR AXIAL MOTOR FAN
cable length 2000 mm



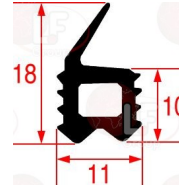
Gaskets and seals

5054883 DOOR GASKET 3000 mm
made of silicone elastomer
profile dimensions 30x10 mm
COLOUR GREY
for Food-service trolley (ALTO-SHAAM)



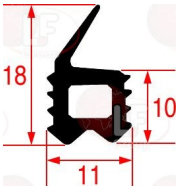
ALTO-SHAAM GS-2398

3786734 DOOR GASKET 580x540 mm
made of silicone elastomer
profile dimensions 18x11 mm
COLOUR GREY
for Food-service trolley electric (ALTO-SHAAM)
1767-SK - 767-SK/III
for Hot cupboard electric (ALTO-SHAAM) 767-SK



ALTO-SHAAM GS-22951

3786733 DOOR GASKET 780x565 mm
made of silicone elastomer
profile dimensions 18x11 mm
COLOUR GREY
for Food-service trolley (ALTO-SHAAM)



ALTO-SHAAM GS-23796

Incandescent lamps and neon lamps

3221638 HALOGEN LAMP NEUT. OSRAM G4 20W 12V
max. temperature 300°C



ALTO-SHAAM LP-34213

Knobs

3241933 BLACK KNOB ø 48 mm OFF-1-10
 D-shaped hole 6x4.6 mm
 for thermostat
 for Potato heater (ALTO-SHAAM) 100-HSL/BCS-2
 100-HSL/BCS-2S - 100-HSL/TM - 100-HSL/TMS
 for Warm table (ALTO-SHAAM) 100-TMC - 200-HFT
 300-HFT - 300-HST - 300-TMC



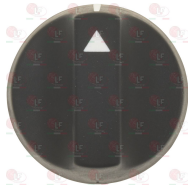
ALTO-SHAAM KN-3473

3241931 BLACK KNOB ø 48 mm OFF-60-200°F
 D-shaped hole 6x4.6 mm
 for Hot cupboard (ALTO-SHAAM) 500-1D - 500-1DN
 500-2D - 500-2DN - 500-3D - 500-3DN



ALTO-SHAAM KN-3469

3241932 KNOB BLACK ø 48 mm
 D-shaped hole 6x4.6 mm
 for thermostat
 for Food-service trolley electric (ALTO-SHAAM)
 1767-SK
 for Hot cupboard (ALTO-SHAAM) 1000-TH-1
 1000-THII - 500 - 750
 for Hot cupboard electric (ALTO-SHAAM) 767-SK



ALTO-SHAAM KN-26568

Lamp receptacles and spare parts

3221172 FRAME FOR OVEN LAMP RECEPTACLE
 external dimensions 96x80 mm



ALTO-SHAAM CV-26607

3186173 GASKET FOR OVEN LAMP RECEPTACLE
 external dimensions 93x79 mm



ALTO-SHAAM GS-26609

Microswitches, magnetic

3803070 DOOR MICROSWITCH
 HAMLIN 59145-010 0852C - head 29x19x6 mm
 with cable length 300 mm
 for Rotisserie (ALTO-SHAAM) AR-7EVH
 for Rotisserie electric (ALTO-SHAAM) AR-7E



ALTO-SHAAM SW-33906



Suitable for:

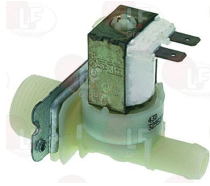
ALTO-SHAAM

Suitable for:



Solenoid valves

3120009 SOLEN. VALVE ELBI TYPE 351 1 WAY 180°
220/240V 50/60Hz - max. temperature 90°C
inlet 3/4" - outlet ø 13.5 mm



ALTO-SHAAM VA-34300

3120021 ADJUSTER FOR INLET ELBI BLACK
flow rate 12 L/min - tolerance +/- 15%



3120019 ADJUSTER FOR INLET ELBI BLACK
flow rate 5.5 L/min - tolerance +/- 15%



3120022 ADJUSTER FOR INLET ELBI BLACK
flow rate 16 L/min - tolerance +/- 15%



3120037 ADJUSTER FOR OUTLET ELBI GREEN
flow rate 0.25 L/min - tolerance +/- 25%



3120201 ADJUSTER FOR OUTLET ELBI GREY
flow rate 4.7 L/min - tolerance +/- 25%



3120016 ADJUSTER FOR OUTLET ELBI NEUTRAL
flow rate 1.2 L/min - tolerance +/- 25%



3120017 ADJUSTER FOR OUTLET ELBI ORANGE
flow rate 2.5 L/min - tolerance +/- 25%



3120015 ADJUSTER FOR OUTLET ELBI RED
flow rate 0.5 L/min - tolerance +/- 25%



3120203 ADJUSTER FOR OUTLET ELBI WHITE
flow rate 2 L/min - tolerance +/- 25%



3120202 ADJUSTER FOR OUTLET ELBI YELLOW
flow rate 0.35 L/min / tolerance +/- 25%



3120000 FILTER FOR INLET SOLENOID VALVE ELBI





Suitable for:

3120204 OUTLET ADJUSTER ELBI BLACK
flow rate 5.5 L/min - tolerance +/- 25%

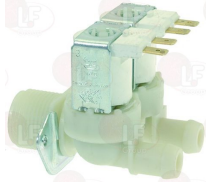


ALTO-SHAAM



Suitable for:

3120411 SOLEN. VALVE T&P 2 WAY 180°
230V 50/60Hz - max. temperature 90°C
inlet 3/4" - two outlets ø 13.5 mm



3120421 ADJUSTER FOR OUTLET T&P BLACK
flow rate 5 L/min - tolerance +/- 20%



ALTO-SHAAM VA-34045

3120608 ADJUSTER FOR OUTLET T&P DARK BROWN
flow rate 1.2 L/min - tolerance +/- 25%



3120568 ADJUSTER FOR OUTLET T&P GREEN
flow rate 3 L/min - tolerance +/- 25%



3120391 ADJUSTER FOR OUTLET T&P LIGHT BLUE
flow rate 1 L/min - tolerance +/- 25%



3120387 ADJUSTER FOR OUTLET T&P LIGHT BROWN
flow rate 1.5 L/min - tolerance +/- 25%



3120423 ADJUSTER FOR OUTLET T&P ORANGE
flow rate 0.5 L/min - tolerance +/- 25%



3120424 ADJUSTER FOR OUTLET T&P RED
flow rate 0.25 L/min - tolerance +/- 25%



3120386 ADJUSTER FOR OUTLET T&P WHITE
flow rate 0.8 L/min - tolerance +/- 25%



3120422 ADJUSTER FOR OUTLET T&P YELLOW
flow rate 2.5 L/min - tolerance +/- 25%





Suitable for:

D120056 ADJUSTER INLET T&P BRONZE
flowrate 12 L/min



D120057 ADJUSTER INLET T&P LIGHT BROWN
flowrate 16 L/min



D120052 ADJUSTER INLET T&P RED
flowrate 3 L/min



D120053 ADJUSTER INLET T&P YELLOW
flowrate 5.5 L/min



3120431 COIL T&P 12Vac 50/60Hz
for solenoid valves T&P



D120090 COIL T&P 120V 60Hz 8VA
for solenoid valves T&P



ALTO-SHAAM



Suitable for:

D120054 ADJUSTER INLET T&P GREY
flowrate 6 L/min



D120058 ADJUSTER INLET T&P ORANGE
flowrate 20 L/min



D120055 ADJUSTER INLET T&P WHITE
flowrate 10 L/min



D120059 ADJUSTER OUTLET T&P BLUE
flow rate 8 L/min - tolerance +/-25%



D120092 COIL T&P 12Vdc
for solenoid valves T&P



3120433 COIL T&P 220V 50/60Hz
for solenoid valves T&P





Suitable for:

3120432 COIL T&P 24Vac 50/60Hz
for solenoid valves T&P



ALTO-SHAAM



Suitable for:

D120093 COIL T&P 24Vdc
for solenoid valves T&P



Switches

3319529 BIPOLAR SWITCH BLACK 10A 250V
16(4)A 250V - max. temperature 120°C
mounting hole 22x30 mm - silk screen printing 0 -



ALTO-SHAAM SW-34788

3319779 BLOCK CONNECTIONS BLACK 22x30 mm



3319780 BLOCK CONNECTION WHITE 22x30 mm



3319782 FRAME SAFETY 2 SIDES BLACK 22x30 mm



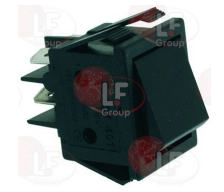
3319783 FRAME SAFETY 4 SIDES BLACK 22x30 mm



3319501 PUSH-BUTTON PROTECTION CAP
external dimensions 29x36 mm
for switches with mounting hole 22x30 mm



3319252 BIPOLAR SWITCH BLACK 16A 250V
16(4)A 250V - max. temperature 120°C
mounting hole 22x30 mm



ALTO-SHAAM SW-3887

3319779 BLOCK CONNECTIONS BLACK 22x30 mm



3319780 BLOCK CONNECTION WHITE 22x30 mm



3319782 FRAME SAFETY 2 SIDES BLACK 22x30 mm





Suitable for:

3319783 FRAME SAFETY 4 SIDES BLACK 22x30 mm



ALTO-SHAAM



Suitable for:

3319501 PUSH-BUTTON PROTECTION CAP
external dimensions 29x36 mm
for switches with mounting hole 22x30 mm

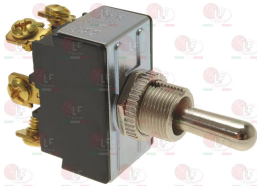


3319760 BLACK SWITCH 20A 125-277V
silk-screen printing 0 - I
max temperature 85°C
mounting hole 20x40 mm
for Food-service trolley (ALTO-SHAAM)



ALTO-SHAAM 5010847

3319503 LEVER SWITCH 20A 250V
threaded coupling M12x1 mm
ON-OFF-ON function
for Display cabinet (ALTO-SHAAM) TYS30

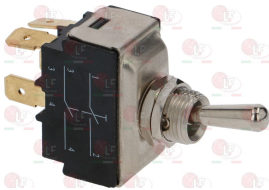


ALTO-SHAAM SW-3616

3319685 SWITCH PROTECTION CAP
for lever switches-reversers



3319714 TWO-POLE LEVER SWITCH 16A 250V
threaded coupling M12x1 mm
ON-OFF function



ALTO-SHAAM SW3528

3319686 START-STOP STRIP
for lever switches-reversers



3319685 SWITCH PROTECTION CAP
for lever switches-reversers





Telethermometers

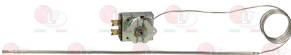
- 3441087 TELE-THERMOMETER WHITE \varnothing 47 mm**
 0-105°C/20-220°F
 metal sheath
 capillary length 960 mm
 bulb \varnothing 10x64 mm
 for Hot cupboard (ALTO-SHAAM) 500-1D - 500-1DN
 500-2D - 500-2DN - 500-3D - 500-3DN



ALTO-SHAAM TH-33713

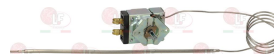
Thermostats

- 3744120 SINGLE-PHASE THERMOSTAT 15-93°C/60-210°F**
 D-shaped pin \varnothing 6x4.6 mm
 capillary length 1000 mm - 15A 250V
 bulb \varnothing 5x400 mm
 for Food-service trolley electric (ALTO-SHAAM) 1767-SK
 for Hot cupboard (ALTO-SHAAM) 1000-TH-I
 1000-TH-II - 500-TH-II - 500-1DN - 500-2DN
 500-3D - 500-3DN - 750-S - 750-TH-II
 for Hot cupboard electric (ALTO-SHAAM) 767-SK



ALTO-SHAAM TT-3057

- 3744119 THERMOSTAT 1-PH.37,77-162,78°C/100-325°F**
 D-shaped pin \varnothing 6x4.6 mm
 capillary length 1050 mm - 30A 277V
 bulb \varnothing 5x280 mm
 for Food-service trolley electric (ALTO-SHAAM) 1767-SK
 for Hot cupboard (ALTO-SHAAM) 1000-TH-I
 1000-TH-II - 500-TH-II - 750-TH-II
 for Hot cupboard electric (ALTO-SHAAM) 767-SK



ALTO-SHAAM TT-3329

- 3744122 THERMOSTAT 1-PH.37,77-232,22°C/100-450°F**
 D-shaped pin \varnothing 6x4.6 mm
 capillary length 850 mm - 30A 277V
 bulb \varnothing 5x285 mm
 for Potato heater (ALTO-SHAAM) 100-HSL/BCS-2
 100-HSL/BCS-2S - 100-HSL/TM - 100-HSL/TMS
 for Warm table (ALTO-SHAAM) 200-HFT - 300-HFT
 300-HST - 300-TMC



ALTO-SHAAM TT-3498

- 3744121 THREE-PHASE THERMOSTAT 154°C**
 with manual reset
 covered capillary length 870 mm - 20A 400V
 bulb \varnothing 6x100 mm
 for Food-service trolley electric (ALTO-SHAAM) 500-TH/III - 750-TH/III - 767-SK/III
 for Hot cupboard (ALTO-SHAAM) 1000-TH/III
 1200-TH/III



ALTO-SHAAM TT-33476

The data herewith contained may change without notice and LF SpA cannot be held responsible for possible errors stated or resulting by the use of this document. All rights reserved. No part of this publication may be reproduced without written permission by LF SpA.



Distributing Components, Spare Parts & Accessories in original quality worldwide

-
- LF SpA HEADQUARTERS**
via Voltri, 80 - 47522 Cesena (FC) ITALY
Tel. +39 0547 34 11 11 - Fax +39 0547 34 11 10
www.lfricambi724.it - info@lfricambi.it
Export Dept. Tel. +39 0547 34 11 50 - Fax +39 0547 34 11 55
www.lfspareparts724.com - export@lfspareparts.com
- LF SpA HOUSEHOLD COMPONENTS DIVISION**
Via Padriciano, 99 - AREA Science Park - 34149 Trieste (TS) ITALY
Tel. +39 0547 34 12 42 - Fax +39 0547 34 12 48
www.lfspareparts724.com - info@lfspareparts.com
- EPGC Sas FRANCE**
13, Rue des Forts - 59960 Neuville en Ferrain
Tel. +33 (0)3 20 25 06 21 - Fax +33 (0)3 20 25 34 12
www.epgc.com - epgc@epgc.com
- LF GmbH GERMANY**
Junkersstrasse, 3 - D-82178 Puchheim - München
Tel. +49 89 89 45 78 66 - Fax +49 89 89 45 78 88
www.lfersatzteile724.de - info@lfersatzteile.de
- LF China REPUBLIC OF CHINA**
Room 403, No.2, Huadu Mansion, Lane 422, Huanghua Rd.
Minhang Dist. - 201103 Shanghai
Tel. +86 (0)21 33 53 66 31 - Fax +86 (0)21 33 53 66 32
www.lfspareparts724.com - china@lfspareparts.com
- OOO LF RUSSIAN FEDERATION**
Ul. Anatoliya Zhivova, 8 - office 1 - 123100 Moscow
Tel./Fax +7 495 725 26 53
www.lfspareparts724.ru - info@lfspareparts.ru
- LF Repuestos Horeca S.L.U. SPAIN**
Poligono Industrial Carpetania - C/Miguel Faraday, 8 - 28906 Getafe
Tel. +34 91 477 91 00 - Fax +34 91 477 90 81
www.lfrepuestos-horeca724.es - info@lfrepuestos.es
- LF Scandinavia Aps - LF Spareparts S.p.A. DENMARK**
Nupark, 51 - 7500 Holstebro
Tel. +45 70 70 77 33
www.lfspareparts724.dk - denmark@lfspareparts.dk
- LF SpA Cesena (IT) Swiss Branch Steinhausen SWITZERLAND**
Sennweidstrasse, 45 - CH-6312 Steinhausen
Tel. +41 (0)41 760 15 80/1 - Fax +41 (0)41 760 15 85
www.lfersatzteile724.ch - info@lfersatzteile.ch
- LF Spare Parts Ltd. UNITED KINGDOM**
A10a Lakeside Business Park, Broadway Lane
South Cerney, Gloucestershire GL7 5XL
Tel. +44 (0)1285 86 16 25 - Fax +44 (0)1285 86 39 49
www.lfspareparts724.co.uk - info@lfspareparts.co.uk
- LF Central Est Europe S.r.o. CZECH REPUBLIC**
Antala Staska 1859/34
14000 Praha 4 - KRC
Tel. +420 730 156 910
www.lfspareparts724.cz - info@lfspareparts.cz
- LF SPARE PARTS INC. USA**
Legal address:
155 Office Plaza Dr - Suite A - Tallahassee, FL 32301
Business/Mailing address:
1100 South Tower, 225 Peachtree St., N.E. - Atlanta, GA 30303, USA
Tel. +1-404-525-2600 - Fax +1-404-586-3528
www.lfspareparts724.us - info@lfspareparts.us
Tel. West Coast and Midwest: 206-349-1525 Sauro
Tel. East Coast and the Caribbean: 786-817-1764 Luis
-
- AUSTRALIA AND NEW ZEALAND**
www.lfspareparts724.com
andrea.calvio@lfspareparts.com
- AUSTRIA**
www.lfersatzteile724.at
info@lfersatzteile.at
- BALKAN COUNTRIES**
www.lfspareparts724.com
matija.ramov@lfspareparts.com
- BALTIC COUNTRIES**
www.lfspareparts724.com
inara.silina@lfspareparts.com
- LATIN AMERICA AND THE CARRIBEANS**
www.lfrepuestos-horeca724.es
export@lfrepuestos.es
- POLAND**
www.lfspareparts724.pl
info@lfspareparts.pl
- SOUTH KOREA**
www.lfspareparts724.com
fabio.doni@lfspareparts.com
- TURKEY**
www.lfyedekparca724.com
export@lfspareparts.com